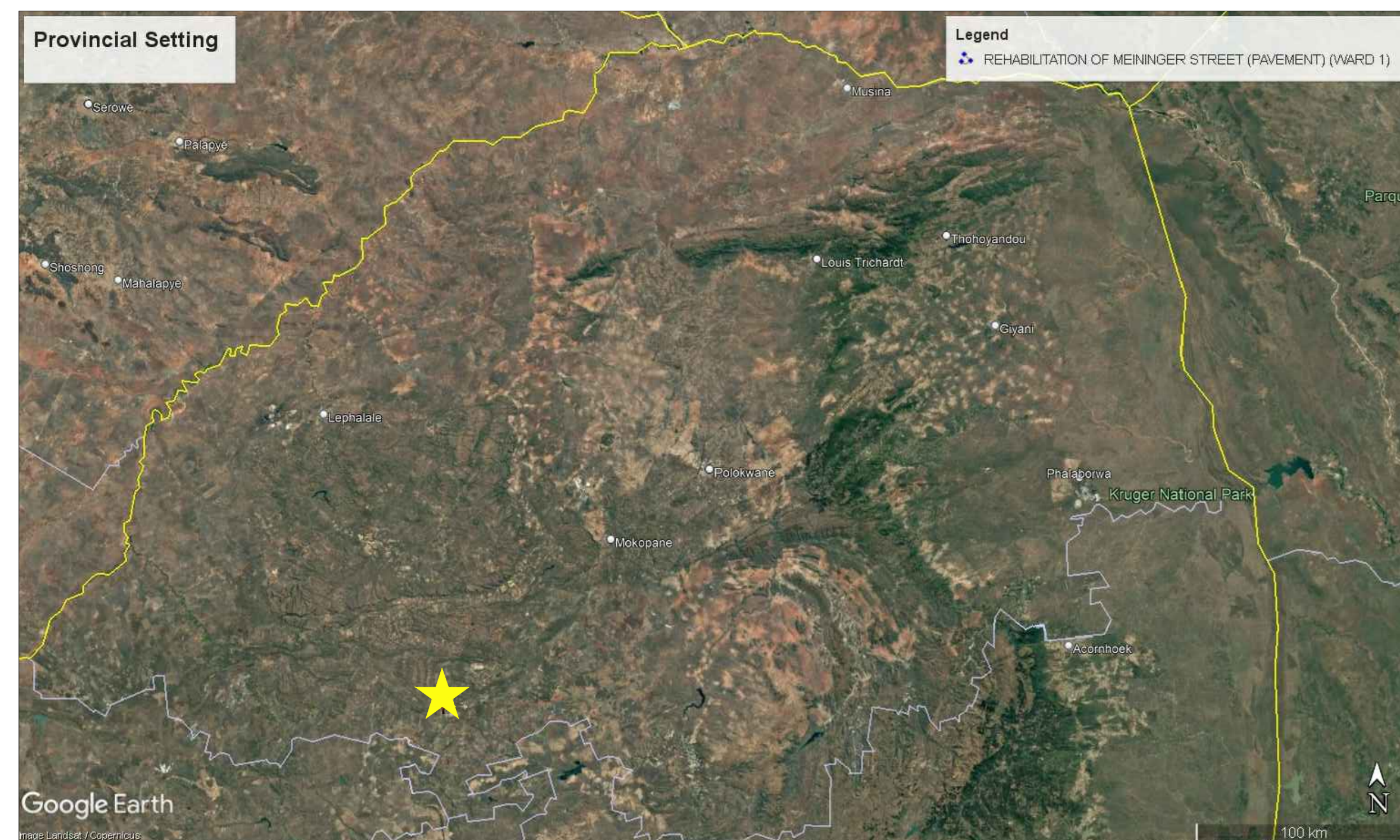




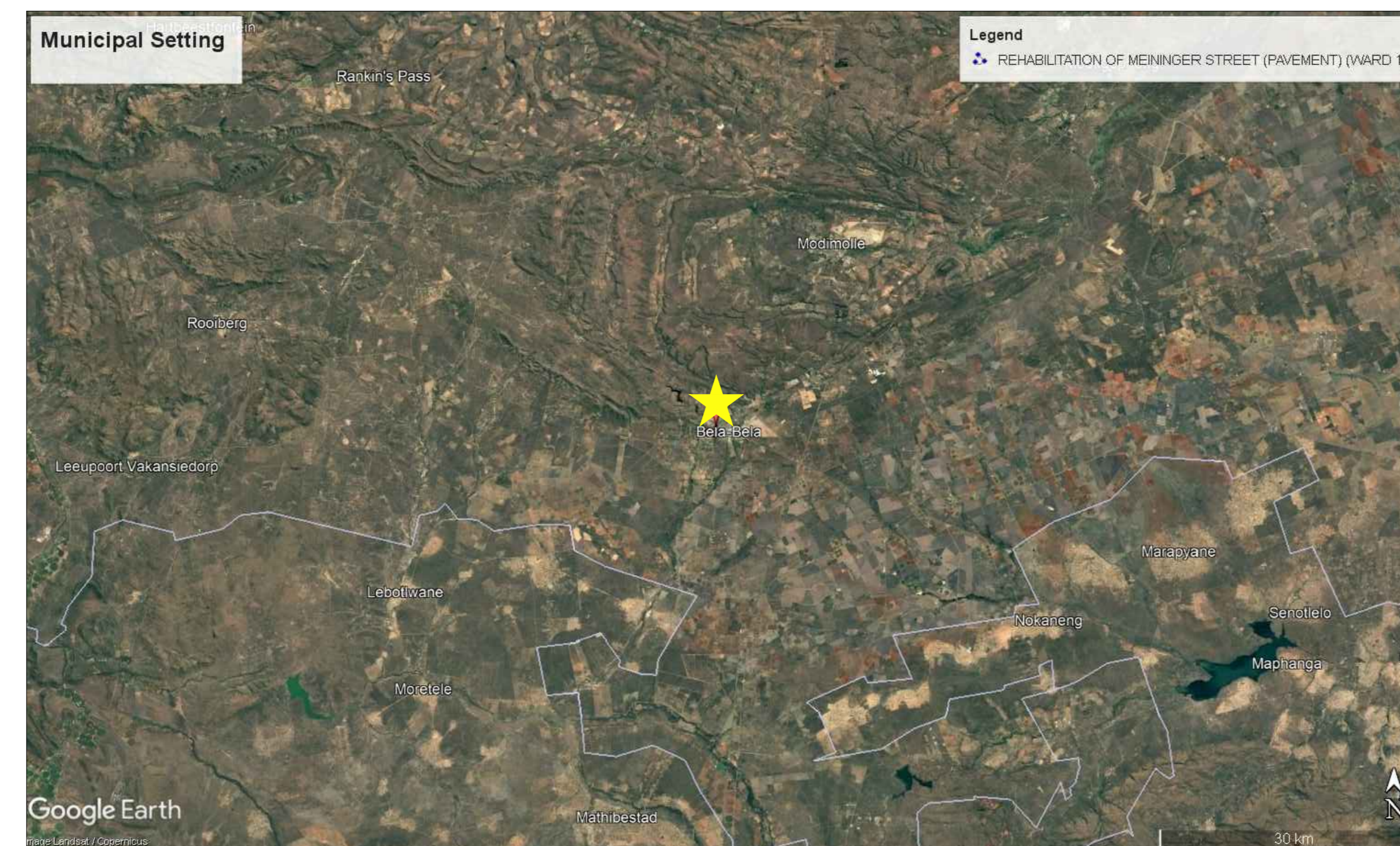
REHABILITATION OF MEININGER STREET (WARD 1)

LIST OF DRAWINGS

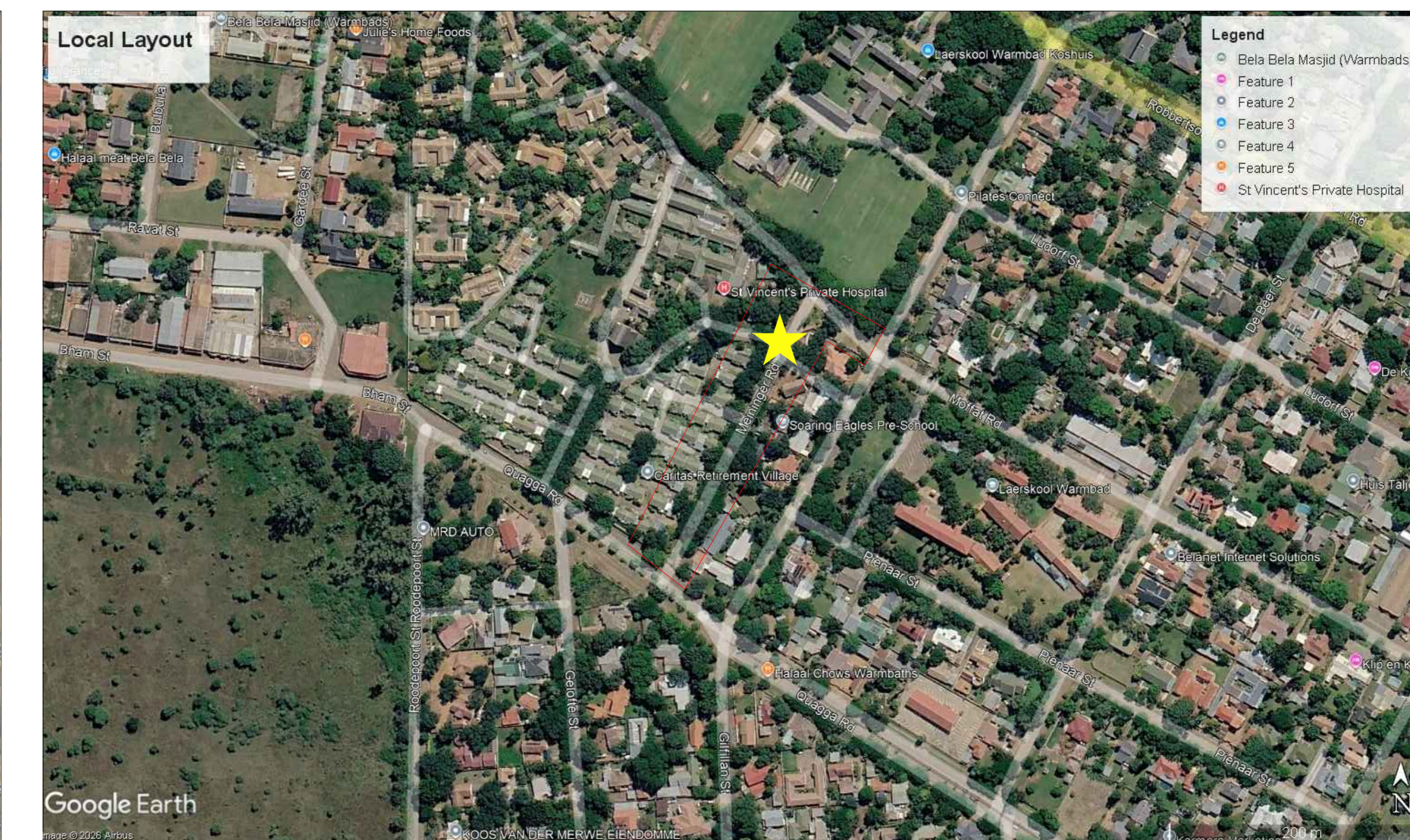
NO.	TITLE	DRG NO.	NO.	DRG NO.
1	BOOK OF DRAWINGS : COVER, LIST OF DRAWINGS, LOCALITY AND LAYOUT	BK0218-C-RD-01	3	CONSTRUCTION SIGN BOARD
2	PLAN VIEW LAYOUT: MEININGER STREET CH+0.00 TO +294.00	BK0218-C-RD-02		



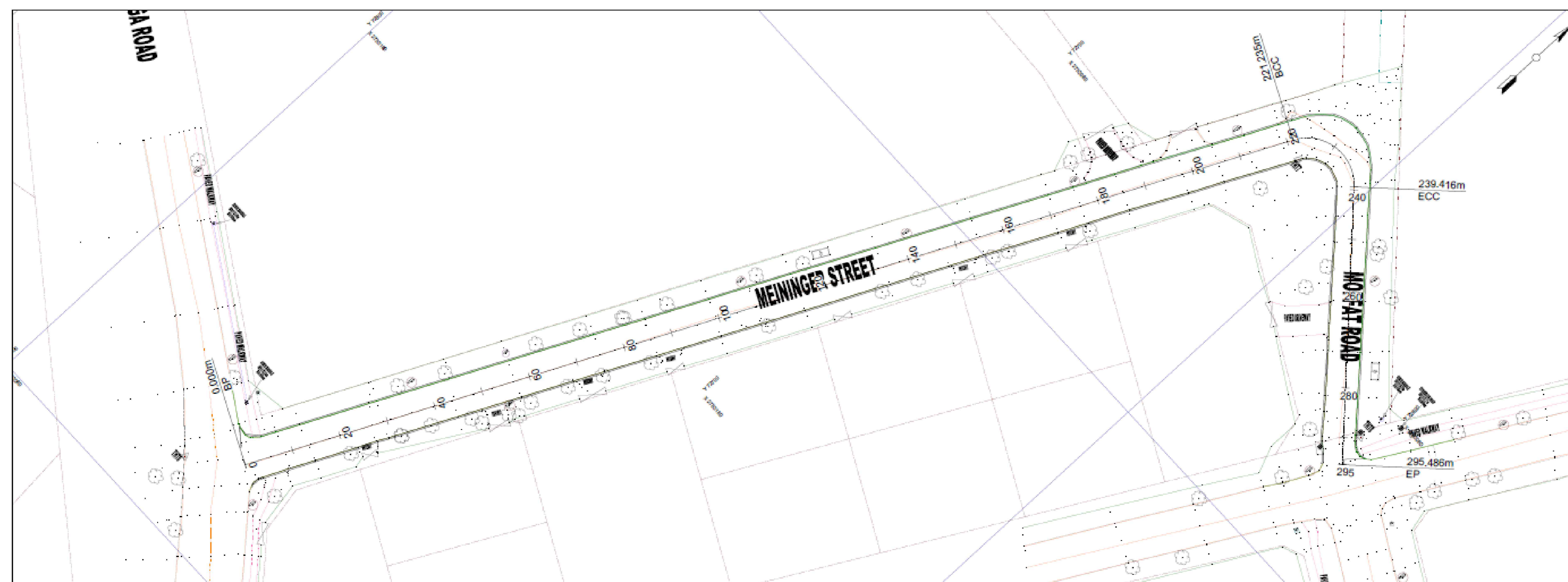
PROVINCIAL SETTING
NTS



MUNICIPAL SETTING
NTS



LOCAL LAYOUT
NTS



PLAN VIEW LAYOUT
NTS

NOT FOR CONSTRUCTION / FOR TENDER PURPOSES ONLY

REVISION :			
REV:	DATE:	COMMENTS:	BY:

CROSS REF. DRAWINGS:			
DISCIPLINE:	DRAWING NO. :		

Confidentiality Note:			
This drawing contains confidential information intended for a specific addressee and purpose. This information is private and protected by law. If you are not the intended recipient, you are hereby notified that any disclosure or distribution, or the taking of any action based on the contents of this information is strictly prohibited.			

Stamp			
-------	--	--	--

CONSULTING ENGINEER	
Approved for distribution :	
Prepared by:	Vedanth Jugath (Pr Techni Eng. 2019600247) (Design Engineer)
Signature:	<i>[Signature]</i>
Checked and Reviewed by:	Thamisanga Skele (Pr Tech Eng. 9970127) (Design Lead / Engineer)
Signature:	<i>[Signature]</i>

Municipality	
Client	
CHRIS HANI DRIVE BELA-BELA 0480 Tel: 014 736 8000 Email: mojelam@belabela.gov.za	

Consultant	
HEAD OFFICE : 581, Mendelssohn Street Constantia Park, Pretoria P.O. Box 72360, Lynnwood Ridge, 0040 Tel: 012 995 1225 Fax: 012 998 1169 Email: bakonepta@bakonegroup.co.za	

Discipline	
CIVIL ENGINEERING	
Project Description	
REHABILITATION OF MEININGER STREET (WARD 1)	
Client Project no.	
9/3/1/437	
Drawing Title	
BOOK OF DRAWINGS : COVER, LIST OF DRAWINGS, LOCALITY AND LAYOUT	
Project Stage	
STAGE 4	Designed
Drawn	V.Y. JUGATH
Checked	A. BUDHRAM
Date	23 MAY 2026
Checked	T.P. SKELE
Drawing number	BK0218-C-RD-01
Rev	0



LEGEND

- Longitudinal Fall
- Cross sectional Fall
- Guard rails

REVISION :

REV:	DATE:	COMMENTS:	BY:
0	23.05.26	FOR TENDER PURPOSES ONLY	AB

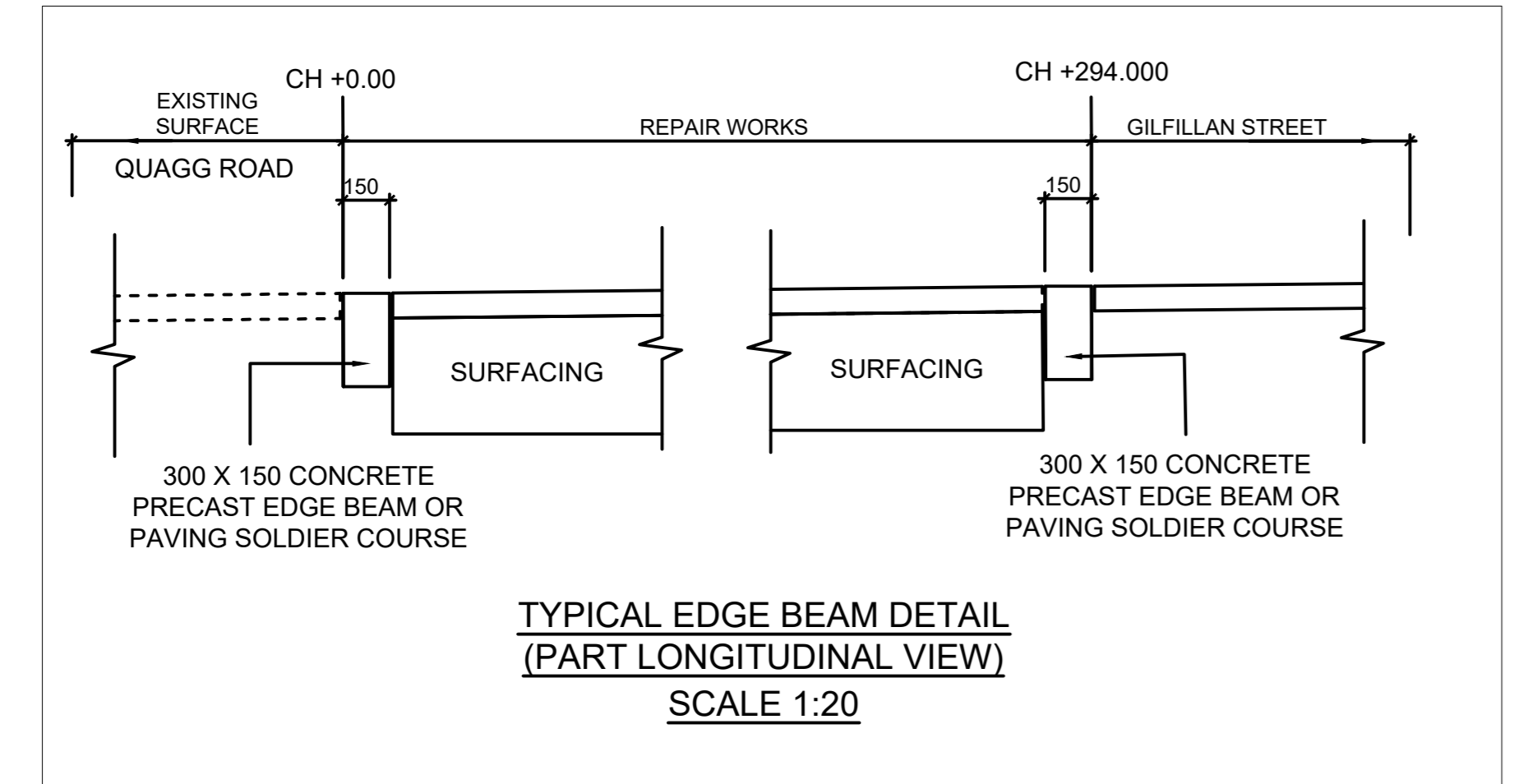
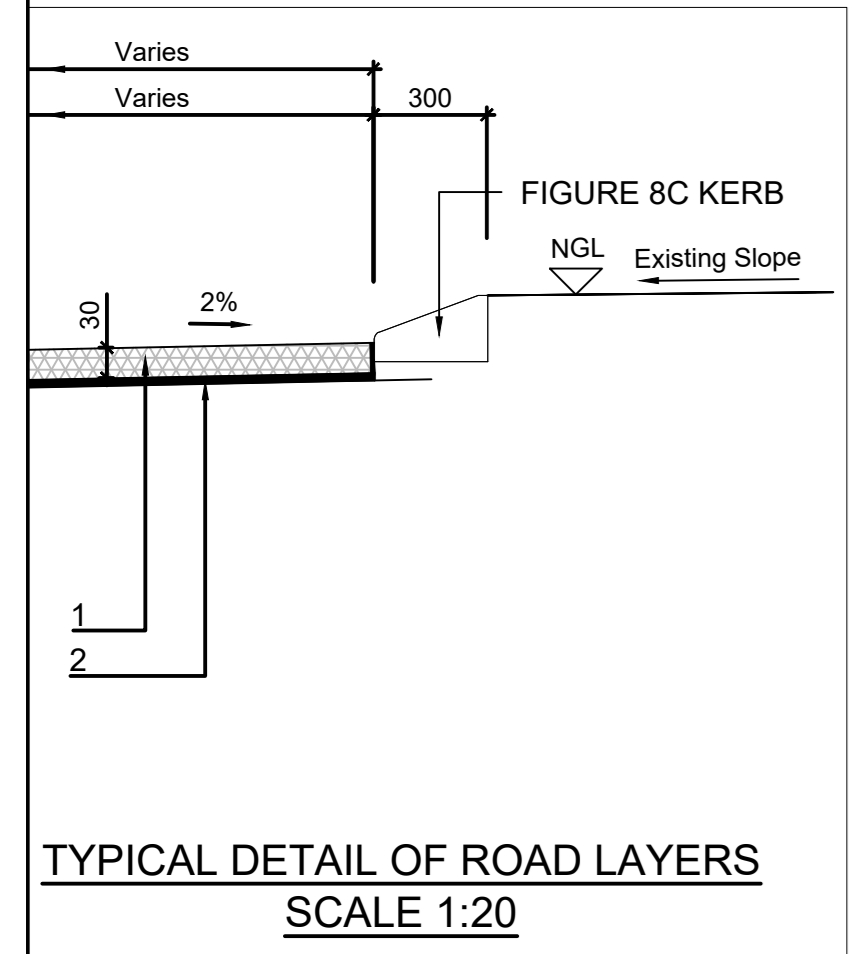
CROSS REF. DRAWINGS:

DISCIPLINE:	DRAWING NO. :

Confidentiality Note:
 This drawing contains confidential information intended for a specific addressee and purpose. This information is private and protected by law. If you are not the intended recipient, you are hereby notified that any disclosure or distribution, or the taking of any action based on the contents of this information is strictly prohibited.

Stamp

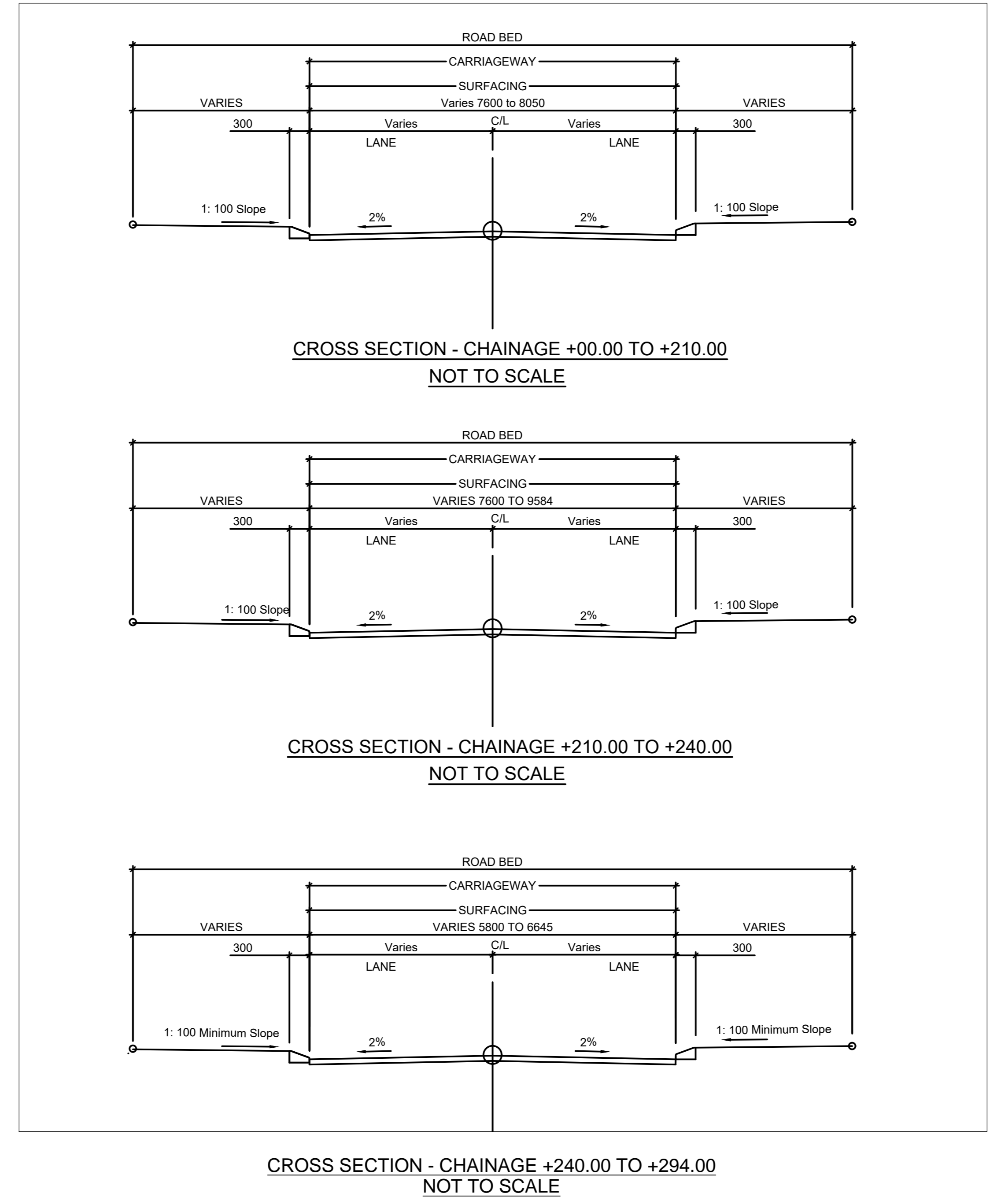
**PLAN VIEW LAYOUT
SCALE 1:300**



LAYER NO.	THICKNESS (mm)	TYPE	MATERIAL CLASS	COMPACTION (% OF MOD. AASHTO)
1	40	SURFACING	ASPHALT	
2	± 2	TACK COAT	BITUMINOUS EMULSION	

MAIN REHABILITATION SECTION
 Cold milling existing asphalt to 30-40 mm depth
 Remove and dispose milled material
 Cleaning of milled surface
 Tack coat (bituminous emulsion)
 Asphalt regulating layer (20-30 mm average, continuously graded mix)
 Asphalt overlay/wearing course 40 mm (AC or continuously graded asphalt)
 Handwork around kerbs/manholes/driveways
 Cutting and sealing longitudinal/transverse joints

LOCAL FAILURES ONLY
 Subbase - G5 natural gravel, 150 mm, compacted to 97% Mod. AASHTO
 Crushed stone base - G2, 150 mm, compacted to 98% Mod. AASHTO
 Prime coat where required



NOT FOR CONSTRUCTION/ FOR TENDER PURPOSES ONLY

CONSULTING ENGINEER

Approved for distribution :

Prepared by: Vedanth Jugath (Pr Techni Eng. 2019600247) (Design Engineer)

Signature:

Checked and Reviewed by: Thamisanqa Skele (Pr Tech Eng. 9970127) (Design Lead / Engineer)

Signature:

Municipality

BELA-BELA LOCAL MUNICIPALITY

Client

BELA-BELA LOCAL MUNICIPALITY

CHRIS HANI DRIVE
 BELA BELA 0480
 Tel: 014 736 8000
 Email: mojlam@belabela.gov.za

Consultant

Bakone Consulting Engineers

HEAD OFFICE :
 581, Mendelssohn Street
 Constanteria Park, Pretoria
 P.O. Box 72360, Lynnwood Ridge, 00440
 Tel: 012 998 1225
 Fax: 012 998 1169
 Email: bakonepta@bakonegroup.co.za

Discipline: **CIVIL ENGINEERING**

Project Description: **REHABILITATION OF MEININGER STREET (WARD 1)**

Client Project no: 9/3/1/437

Drawing Title: **PLAN VIEW LAYOUT: MEININGER STREET - CH+0.00 TO +294.00**

Project Stage: **STAGE 4**

Scale: **A0: AS SHOWN**

Date: **23 MAY 2026**

Drawing number: **BK0218-C-RD-02**

Designed: **V.Y. JUGATH**

Drawn: **A. BUDHRAM**

Checked: **R. MATLALA**

T.P. SKELE

Rev: **0**

4218

35 1125 3023 35

REHABILITATION OF MEININGER STREET (WARD 1)
BELA BELA LOCAL MUNICIPALITY

PROJECT NO: 9/3/1/437

BELA-BELA
LOCAL MUNICIPALITY

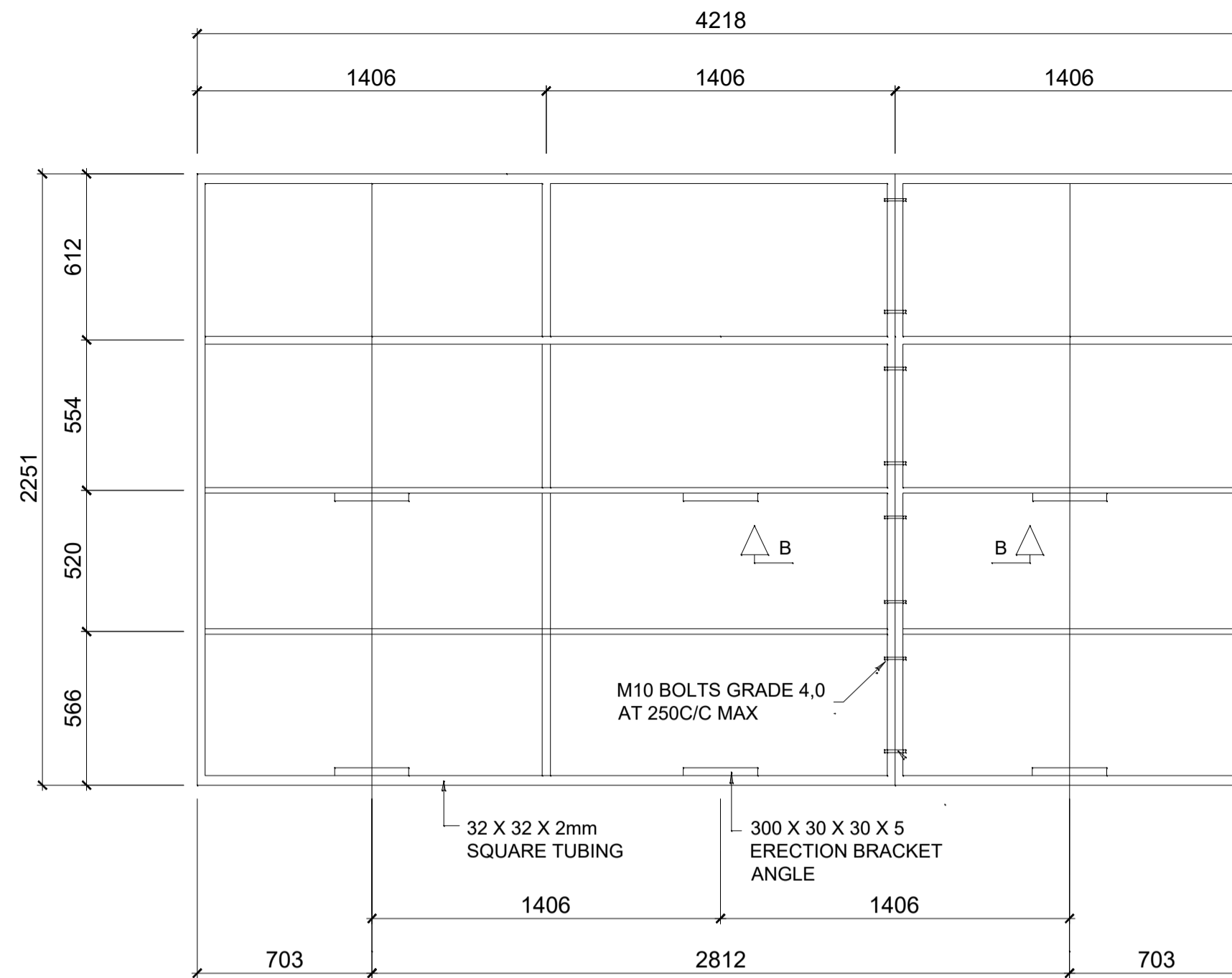
Bakone Consulting Engineers

PROFESSIONAL SERVICE PROVIDER:
BAKONE CONSULTING ENGINEERS
TEL: (012) 998 1225
P.O. Box 72360, LYNNWOOD RIDGE, 0040

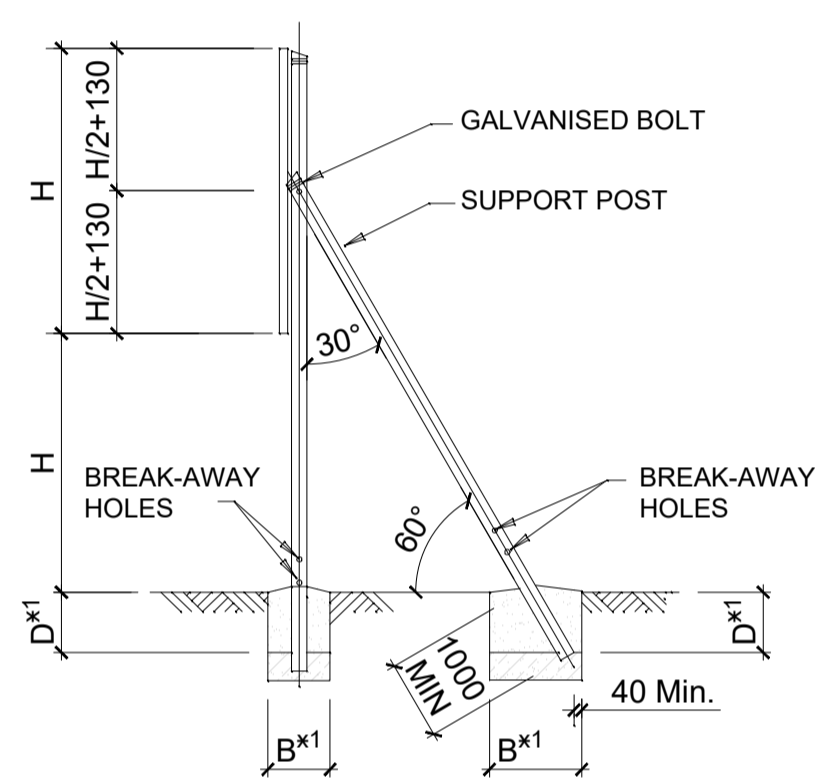
CONTRACTOR:
NAME OF CONTRACTOR
TELEPHONE NUMBER
ADDRESS

2270

FRONT ELEVATION
SCALE 1:20

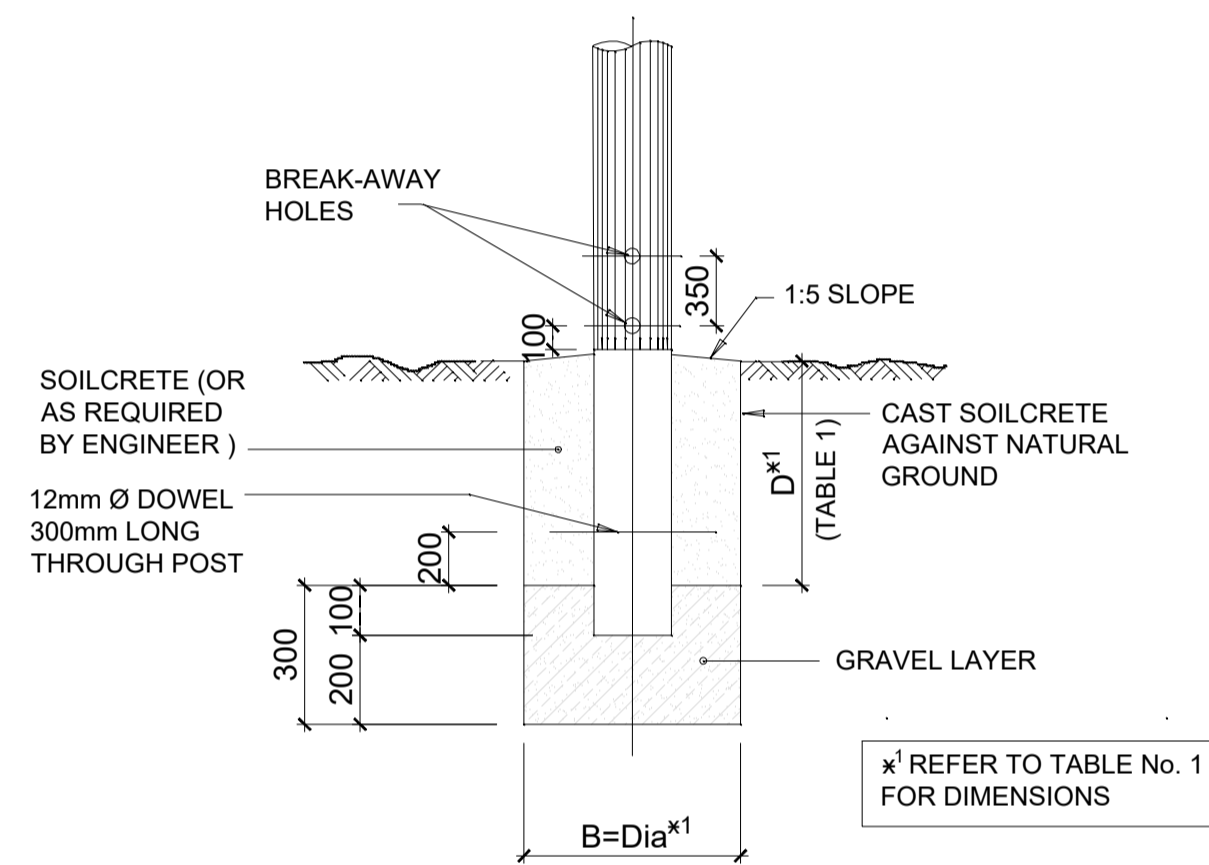


REAR SIDE BRACING



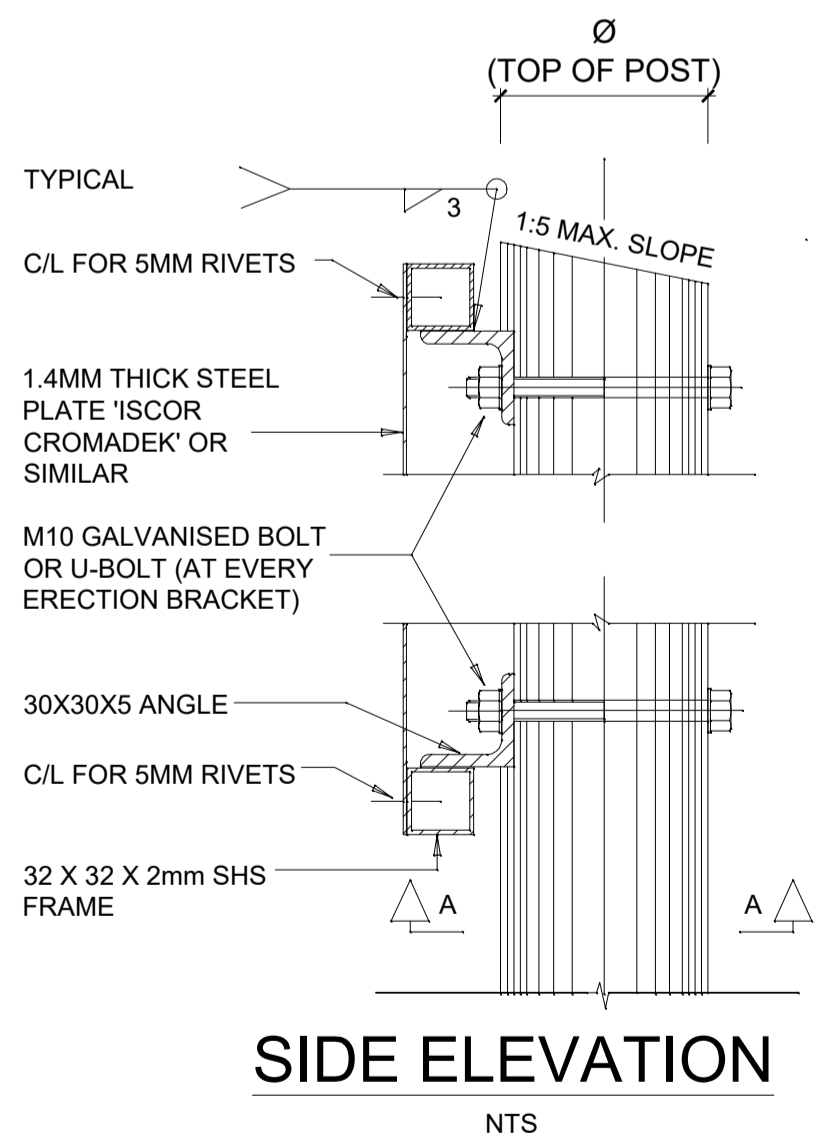
SIDE ELEVATION OF ROAD SIGN

DETERMINATION OF BREAK-AWAY HOLES	
POLE DIA (mm)	HOLE DIA (mm)
< - 140	NONE
141 - 170	40
171 - 200	50
201 - 225	65

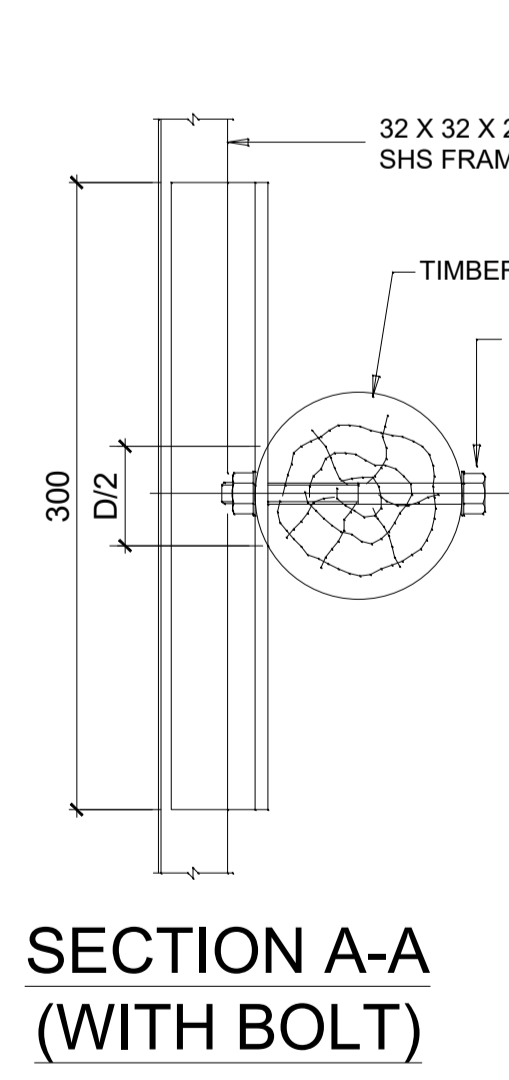


FOUNDATION DETAIL

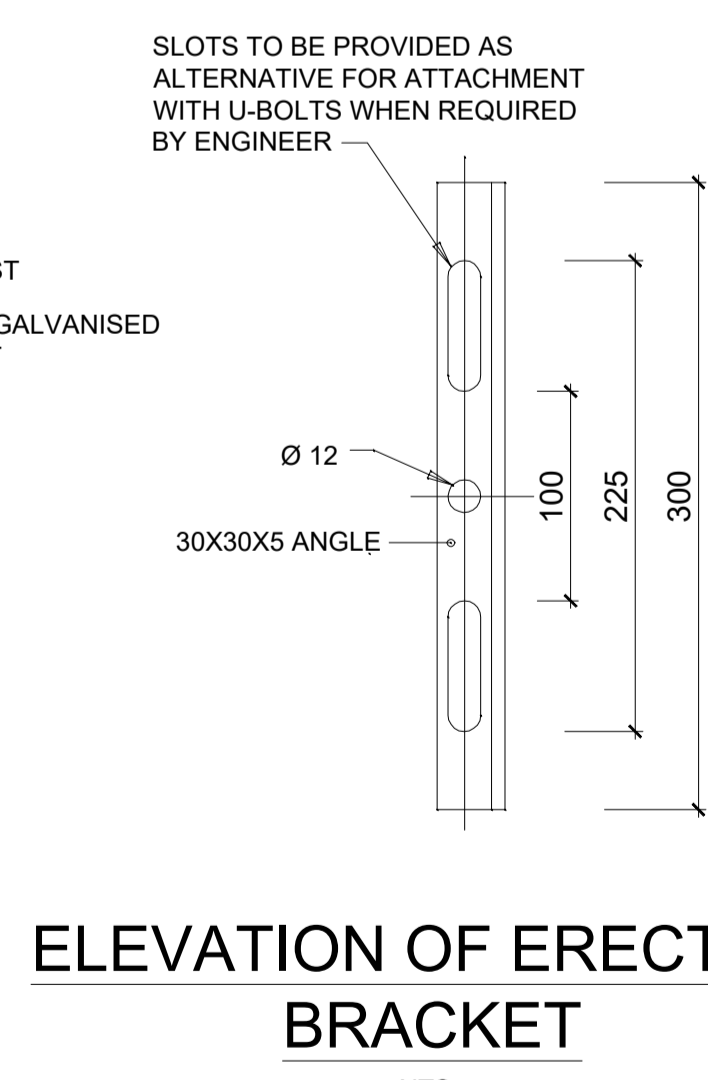
- NOTES:**
- EMBLEM:**
- ALL EMBLEMS TO BE DISPLAYED IN FULL COLOUR ON A SEMI-MATT SMOKE-GREY BACKGROUND
- LETTERS AND NUMBERS:**
- DESCRIPTION: MATT-BLACK, SERIES DIN B LETTERS AND NUMBERS ON A SEMI-MATT SMOKE-GREY BACKGROUND
- BORDERS:**
- BORDER: GREEN NON-REFLECTORIZED
- QUANTITY**
- TWO SIGN BOARDS, SHALL BE ERECTED AT POSITIONS DETERMINED BY THE ENGINEER
- DESCRIPTION**
- DESCRIPTION OF WORK (NUMBER OF KILOMETERS AND TYPE OF WORK, eg '13.5km RECONSTRUCTION OF ROAD 1974.' DESCRIPTION STARTS CENTERED ON THE LEFT-HAND SIDE AND THE FIRST 105mm DIMENSIONS BELOW 'ROADS AGENCY LIMPOPO'
 - SAFCEC EMBLEM ONLY IF CONTRACTOR IS A MEMBER OTHERWISE BLANK.
 - NEW SAACE LOGO TO BE OBTAINED FROM SAACE, JOHANNESBURG



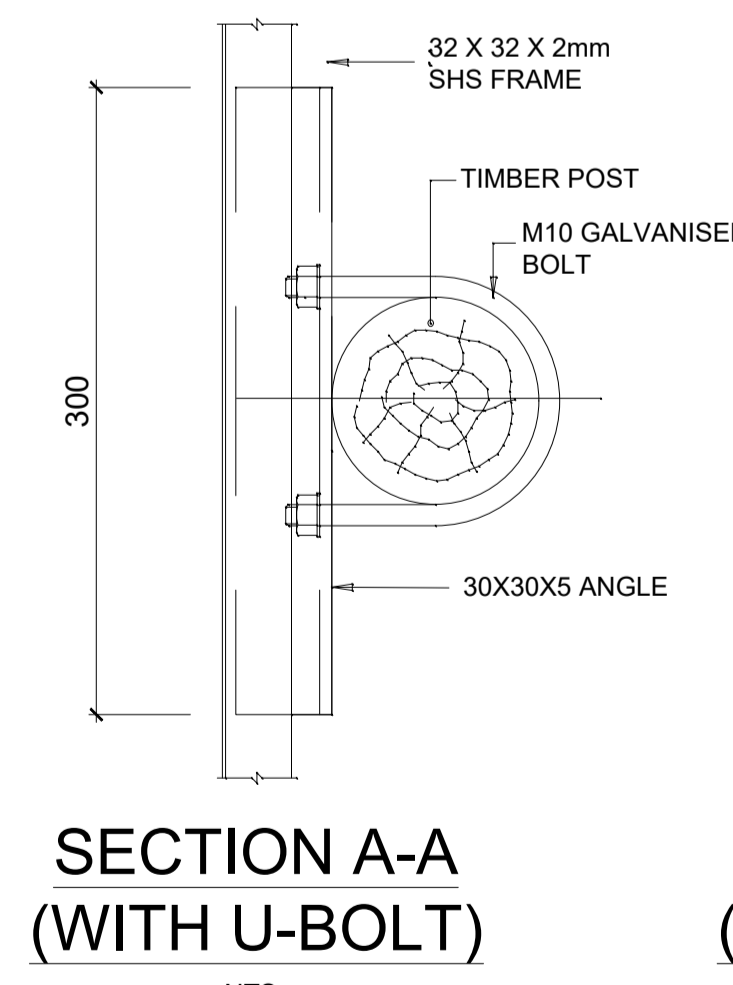
SIDE ELEVATION



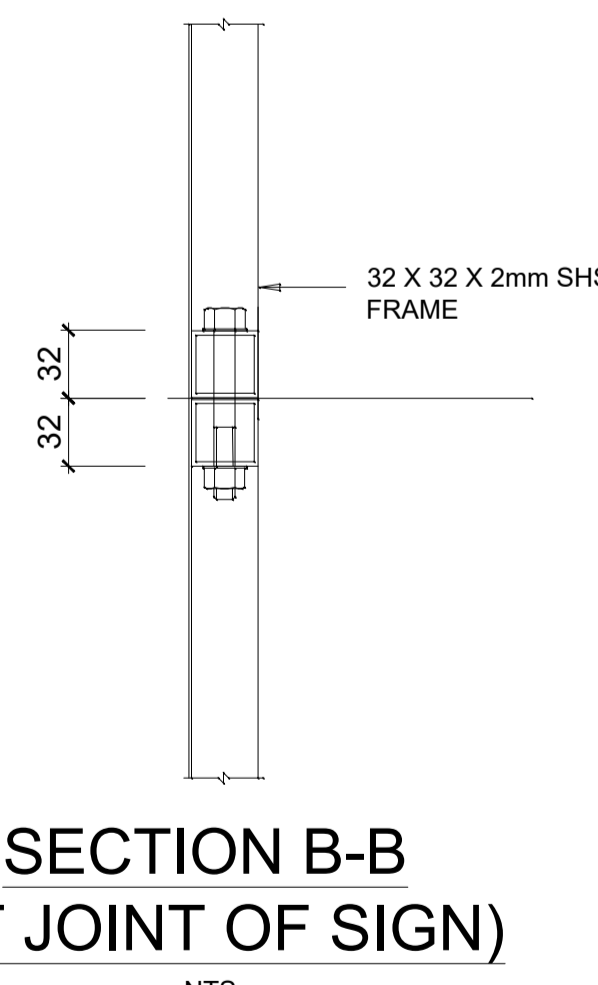
SECTION A-A (WITH BOLT)



ELEVATION OF ERECTION BRACKET



SECTION A-A (WITH U-BOLT)



SECTION B-B (AT JOINT OF SIGN)

FIXING DETAIL FOR SIGN BOARDS

TABLE 1: DETERMINATION OF POSTS AND FOOTINGS ERECTION DETAILS				
TYPE OF POST	UPRIGHT	STAY	D	B(DIA)
TIMBER POST AND STAY	100mm	80mm	600mm	850mm
TIMBER POST	180mm	-	1000mm	1450mm
D SECTION STEEL POST	100mm X 4mm	-	1000mm	1450mm

**NOT FOR CONSTRUCTION
FOR TENDER PURPOSES ONLY**

REVISION :			
REV:	DATE:	COMMENTS:	BY:
0	23.05.26	FOR TENDER PURPOSES ONLY	AB

Confidentiality Note:
This drawing contains confidential information intended for a specific addressee and purpose. This information is private and protected by law. If you are not the intended recipient, you are hereby notified that any disclosure or distribution, or the taking of any action based on the contents of this information is strictly prohibited.

Stamp

CONSULTING ENGINEER

Approved for distribution :

Prepared by:	Vedanth Jugath (Pr Techni Eng. 2019600247) (Design Engineer)
Signature:	
Checked and Reviewed by:	Thamisanqa Skele (Pr Tech Eng. 9970127) (Design Lead / Engineer)
Signature:	

Municipality

BELA-BELA
LOCAL MUNICIPALITY

Client

BELA-BELA
LOCAL MUNICIPALITY

CHRIS HANI DRIVE
BELA BELA 0480
Tel: 014 736 8000
Email:
mojlam@belabela.gov.za

Consultant

Bakone Consulting Engineers

HEAD OFFICE :
581, Mendelssohn Street
Constantia Park, Pretoria
P.O. Box 72360, Lynnwood Ridge, 0040
Tel: 012 998 1225
Fax: 012 998 1169
Email: bakonepta@bakonegroup.co.za

Discipline
CIVIL ENGINEERING

Project Description
REHABILITATION OF MEININGER STREET (WARD 1)

Client Project no.
9/3/1/437

Drawing Title
CONSTRUCTION SIGN BOARD

Project Stage.	STAGE 4	Designed	V.Y. JUGATH
Scale	A0: AS SHOWN	Drawn	A. BUDHRAM R. MATLALA
Date	23 MAY 2026	Checked	T.P. SKELE
Drawing number	BK0218-C-RD-03	Rev	0