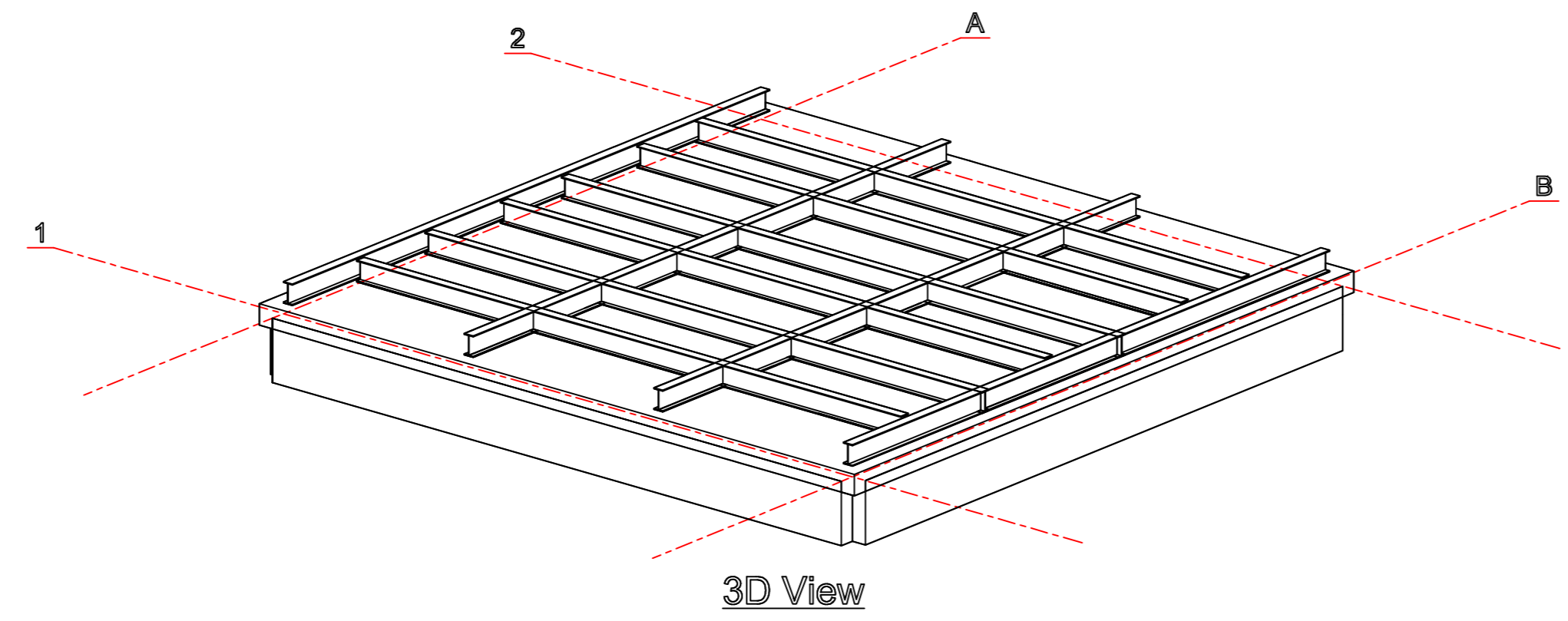
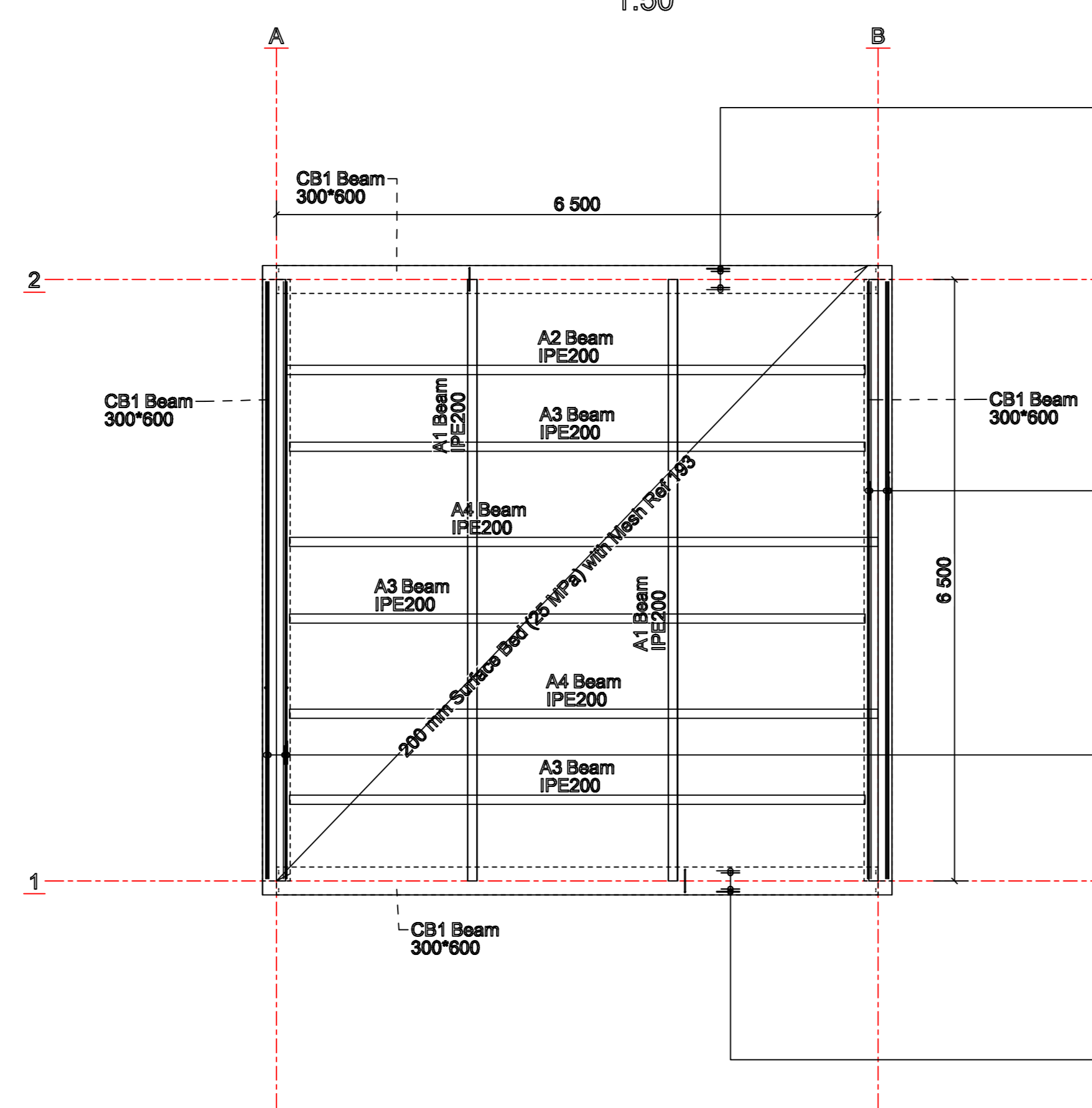
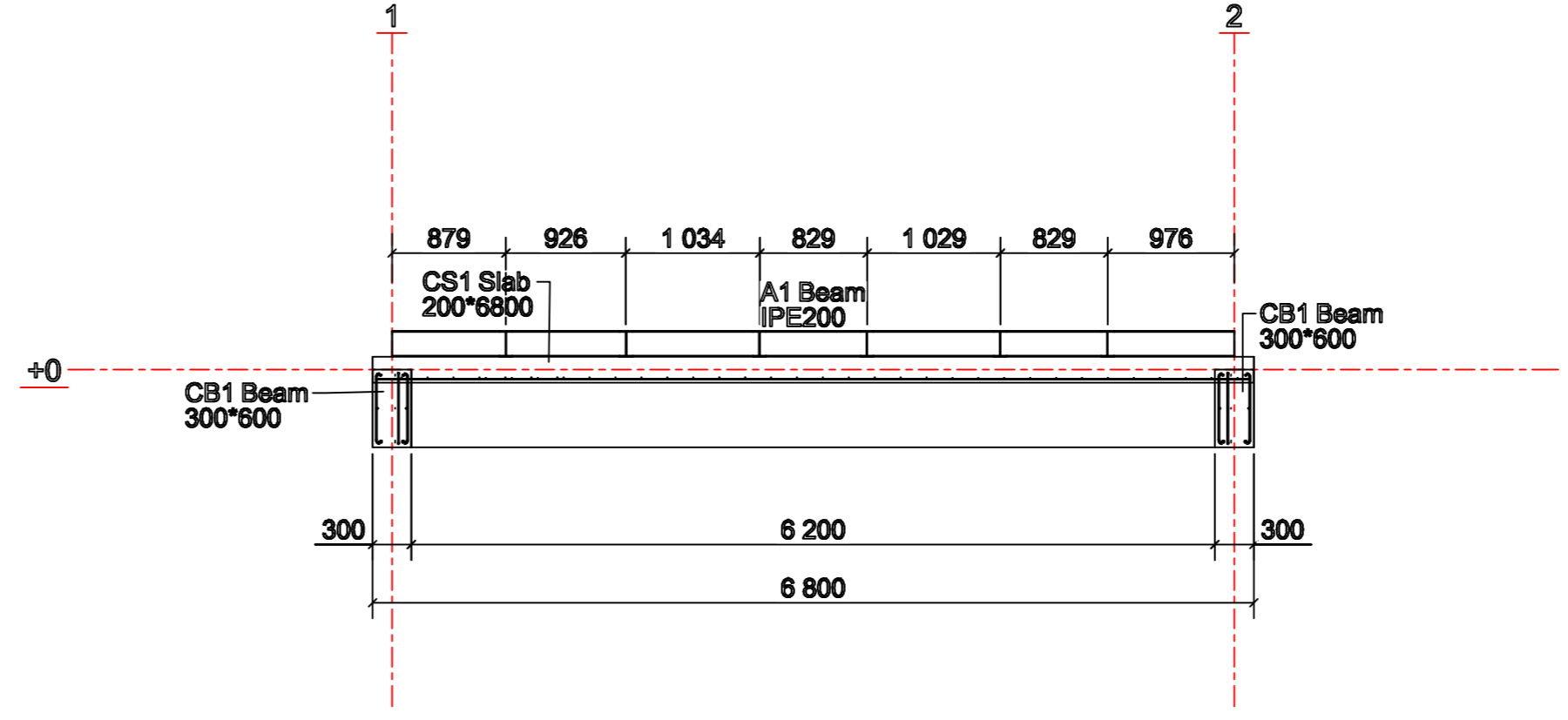
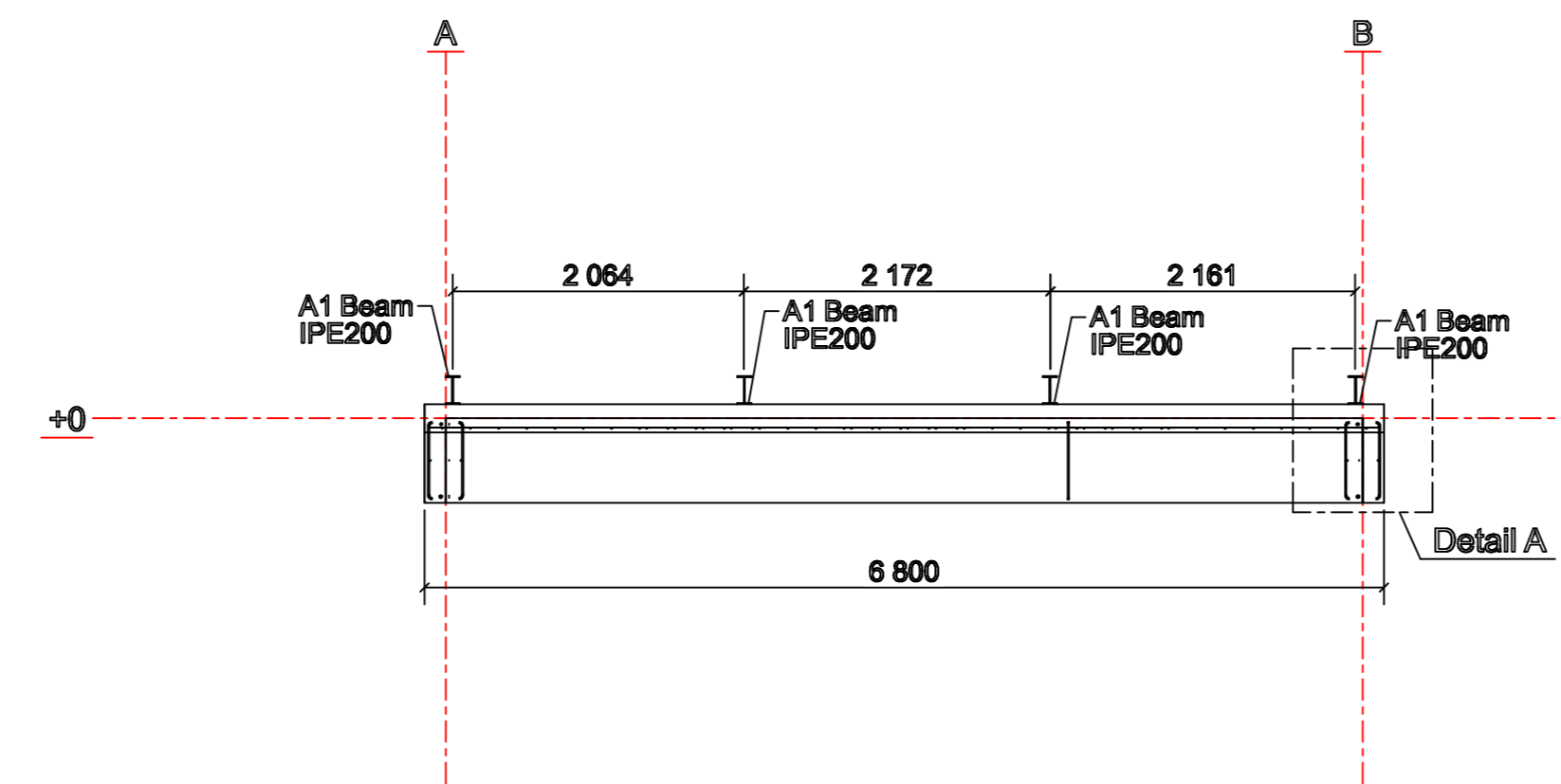


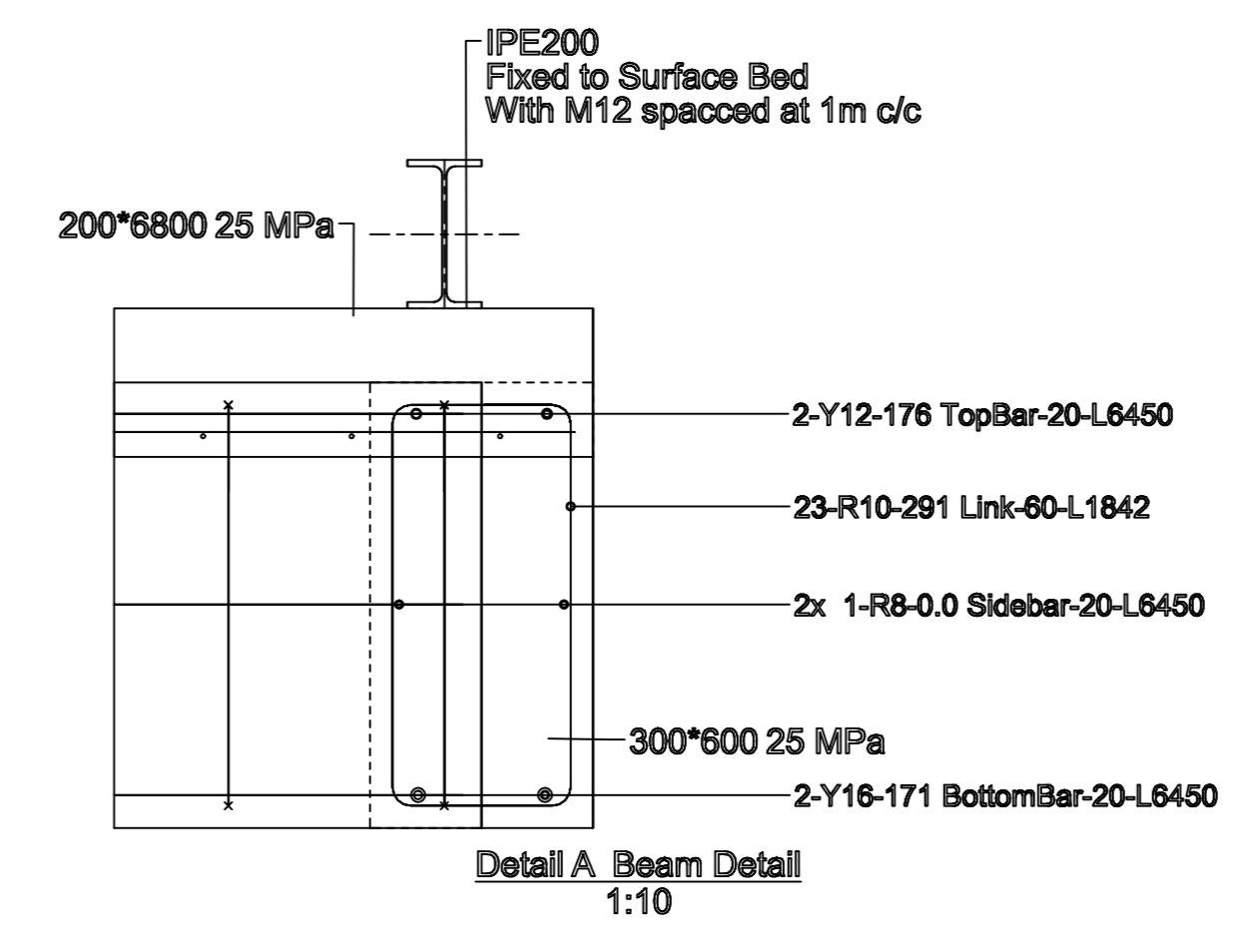
Type	Mark	No	Length	Shape	A	B	C	D	E	r	Mass each	All
Y12	3	8	6450	20	6450						6.7	45.6
Y16	2	8	6450	20	6450						10.2	81.5
R 8	4	8	6450	20	6450						2.6	20.4
R10	1	82	1750	80	250	550					1.1	88.6
Total of 116 bars with a mass of 246.2 kg per cast unit.												



Material list for 1 part named 'Sheet'	Mark	Profile	Dimk	Length	Part Area	Mass
CS1	200*600	CS0	600	97.8	2267.6	
Total for 1 part 600 97.8 2267.6						
Material list for 1 part named 'Sheet'	Mark	Profile	Dimk	Length	Part Area	Mass
A2	PE200	S355JR	6247	4.8	136.9	
Total for 1 part 6247 4.8 136.9						
Material list for 4 parts named 'Sheet'	Mark	Profile	Dimk	Length	Part Area	Mass
CS1	200*600	CS0	600	12.1	288.5	
Total for 4 parts 2600 48.2 1148.0						
Material list for 2 parts named 'Sheet'	Mark	Profile	Dimk	Length	Part Area	Mass
A4	PE200	S355JR	6300	4.9	142.4	
Total for 2 parts 12716 9.8 284.8						
Material list for 3 parts named 'Sheet'	Mark	Profile	Dimk	Length	Part Area	Mass
A3	PE200	S355JR	6216	4.8	138.2	
Total for 3 parts 18649 14.3 417.7						
Material list for 4 parts named 'Sheet'	Mark	Profile	Dimk	Length	Part Area	Mass
A1	PE200	S355JR	6000	6.0	146.6	
Total for 4 parts 26000 20.0 582.4						



- 2-Y12-176 (3) TopBar-20-L6450
- 2-Y16-171 (2) BottomBar-20-L6450
- 23-R10-291 (1) Link-60-L1842
- 2x 1-R8-0.0 (4) SideBar-20-L6450



REV	WORKS DESCRIPTION	DATE
A	STAGE 4.2 ISSUED FOR INFORMATION	2026.06.07

FOR TENDER