

ANNEXURE C3.2: SCOPE OF WORK

SUPPLY AND REPLACE POLYCARBONATE SHEETS ON STRUCTURES AT RAND WATER ZUIKERBOSCH WATER TREATMENT PLANT

- i. Remove old IBR fibre, IBR polycarbonate and Klip-Lok polycarbonate sheets.
- ii. Install new IBR polycarbonate sheets and Klip-Lok polycarbonate sheets
- iii. Use Tek-screws with large Bonded Washers to fasten newly installed sheets
- iv. The required **IBR polycarbonate** sheets colour is **White (Opal)**.
- v. The Width is **710mm** and the Thickness is **(1mm – 1.25mm)**
- vi. The required **Klip-Lok polycarbonate** sheets is **Bronze**.
- vii. The Width is **850mm** and the Thickness is **(1mm – 1.25mm)**
- viii. **The successful bidder will be required to start the work at PAC Plant Skylights.**
 1. Lime Plant No.2 Entrance structure
 - 40 Sheets x 3m
 2. Lime Plant No.2 Second structure
 - 40 Sheets x 3m
 3. Lime Plant No2 Eastern Side A
 - 50 Sheets x 3m
 4. Lime Plant No2 Eastern Side B
 - 18 Sheets x 4m
 5. Lime Plant No.2 Crossing the road.
 - 54 Sheets x 3m
 6. Crusher House no.4
 - 8 Sheets x 6m
 7. Slaker House no.4
 - 34 Sheets x 3m

8. Slaker House no.3 (Opposite Parking)
 - 10 Sheets x 3m
9. Slaker House no.3 (Opposite Systems no.3)
 - 10 Sheets x 5m
10. PAC Plant roof skylights
 - 100 Sheets x 3m
11. PAC Plant roof ridges
 - 5 Ridges
12. PAC Plant Western side.
 - 2 Sheets x 8m
13. Lime Plant no.1 Bunker
 - 6 Sheets x 7.5m



1) Lime Plant Entrance Structure



2) Lime Plant Second Structure



3) Lime Plant no.2 Eastern Side A



4) Lime Plant no.2 Eastern Side B



5) Lime Plant no.2 Crossing the Road



6) Crusher House no.4



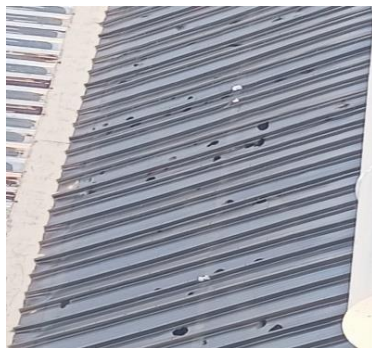
7) Slaker House no.4



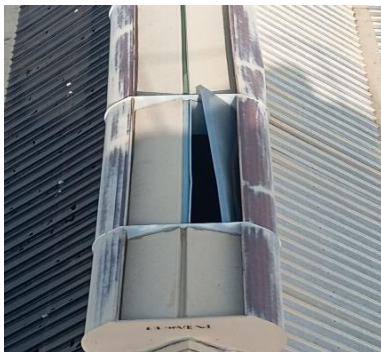
8) Slaker House no.3 Opposite Parking



9) Slaker House no.3 Opposite Systems 3



10) PAC Plant Skylights



11) PAC Plant Ridges



12) PAC Plant Western Side

NB:

The highest height is 20 meters, therefore.

- It is the supplier's responsibility to organise own storage including security for the duration of the works, security personnel to be available 24hrs.
- Make sure that your quote includes lifeline, scaffold, skyjack or cherry picker to have safe access on the roofs.
- Quotation should include Preliminary and General (P&Gs) to accommodate the duration of the work on site.
- The successful Bidder must submit a safety file and attend induction before work commences

ANNEXURE C4: SITE INFORMATION

Rand water Zuikerbosch Non Compulsory Site Briefing 01.09.2025 @ 10:00

Vischagat Road, Three Rivers East

Vereeniging, 1939

GPS Coordinates: S 26° 41.520 and E 28° 00.061

Potential Bidders who wish to attend the site visit must ensure that they abide with the below requirements.

THE IMPORTANCE OF WEARING PPE

Everyone accessing the plant will be expected to wear safety shoes, failure to which no access will be granted.

THE IMPORTANCE OF CARRYING YOUR DRIVER'S LICENSE

Everyone accessing the site using personal or company vehicles is requested to always carry their valid driver's license.

VALID CAR DISCS ARE ESSENTIAL

Every company or personal vehicle accessing the site must have a valid car disc. The biometric system will scan and cross-reference these discs to ensure compliance with local regulations. Failure to have a valid car disc may result in the vehicle being refused entry.

DATA SECURITY

The site complies with the principle of Personal Access to Information Act (PAIA) and as such all data collected will be treated with the utmost confidentiality and used solely for security and access control purposes.