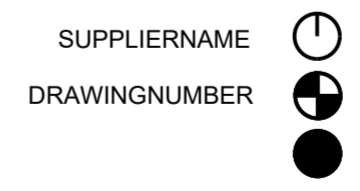


SECTION B-B

NOTES:

- BREAK ALL SHARP EDGES 3X3mm.
- TEETH CASE HARDEN BY CARBURISING.
- AFTER HEAT TREATMENT SHOOT PEEN AND ROOTS WITH S330 SHOT 90% MINIMUM COVERAGE.
- AFTER SHOOT PEEN GRIND TEETH AND ROOTS. SURFACE FINISH INVOLUTE $\sqrt{0.8}$ AND $\sqrt{3.2}$ FOR FILLET.
- CRACK DETECTED MAGNETICALLY (WET FLAURESCENT) TO SPECIFICATION RS/ME/PR/026
- INSPECTION RESULTS FOR THESE DIMENSIONS REQUIRED ON A DATA SHEET FOR EACH GEAR WHEEL GEOMETRY + MATERIAL AND HEAT TREATMENT CERTIFICATE.
- MANUFACTURING STAMP AS INDICATED.....BATCH NUMBER, MONTH AND YEAR OF MANUFACTURING
- ALL DIMENSIONS ARE IN MM, UNLESS SPECIFIED OTHERWISE.
- ULTRASONIC TEST CERTIFICATE IS REQUIRED.



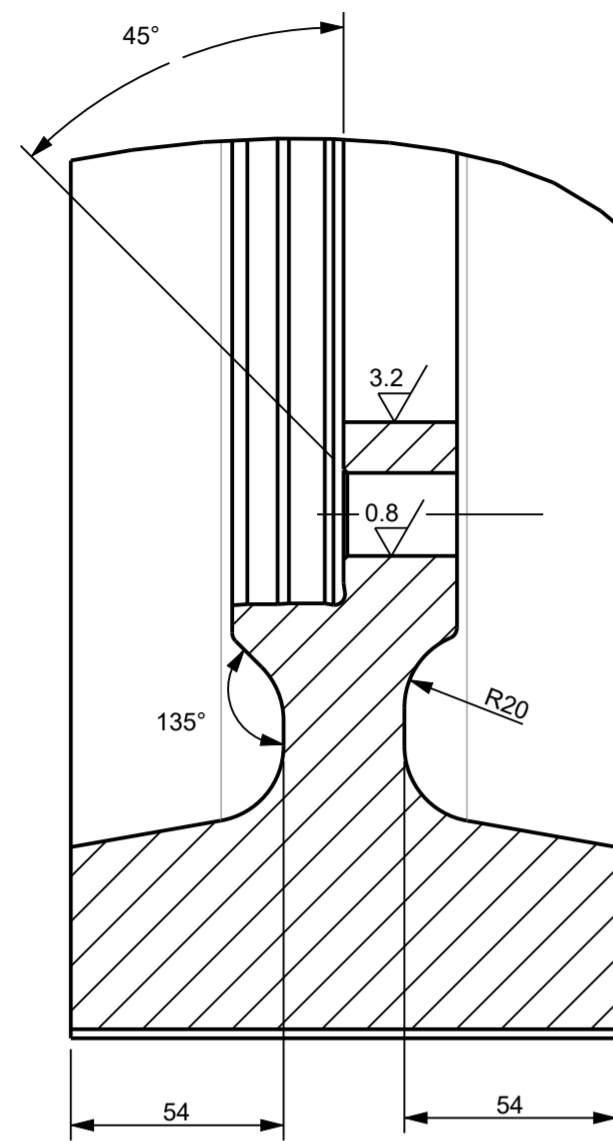
GEAR				
	VALUE	TOLERANCES		
BASIC SPECIFICATION DATA	Number of teeth	103		
	Normal module	9		
	Normal pressure angle	20		
	Profile shift co-efficient	-0.2866		
	Reference circle diameter	927		
	Actual cordal tooth thickness	12.084	0	-0.08
	Tooth Height	23.529		
ADDITIONAL SPECIFICATION DATA	Dedendum	16.079	0.24	0.35
	Addendum	7.45	0	-0.115
	Tip relief (µm)	11	5	8
	Root relief (µm)	11	5	8
	Base diameter	871.095		
	Centre distance between gear and pinion	540.00		
	crowning (µm)	20	10	15
Reference profile	1.50 / 0.20 / 1.1 DIN 58400:1984 (mn 0.1-0.6)			
MANUFACTURING AND INSPECTION DATA	Number of teeth for BTL	11		
	Base tangent length	290.195	-0.164	-0.239
	Normal backlash	0.230 - 0.400		
	Manufactured Root diameter	894.36	0	-0.22
	Tip diameter	941.9	0	-0.23
	Tip chamfer	1.5		
	Tooth tip chamfer angle	45		
Tooth quality standard	ISO 1328:1995 Quality 6			

COPYRIGHT
 THIS DRAWING TOGETHER WITH THE COPYRIGHT IS THE PROPERTY OF
TRANSNET
 THIS DRAWING OR ANY PART THEREOF IS NOT TO BE COPIED OR OTHERWISE REPRODUCED OR USED FOR MANUFACTURE OR ANY OTHER PURPOSE WITHOUT THE WRITTEN PERMISSION FROM
 CHIEF EXECUTIVE,
 TRANSNET ENGINEERING

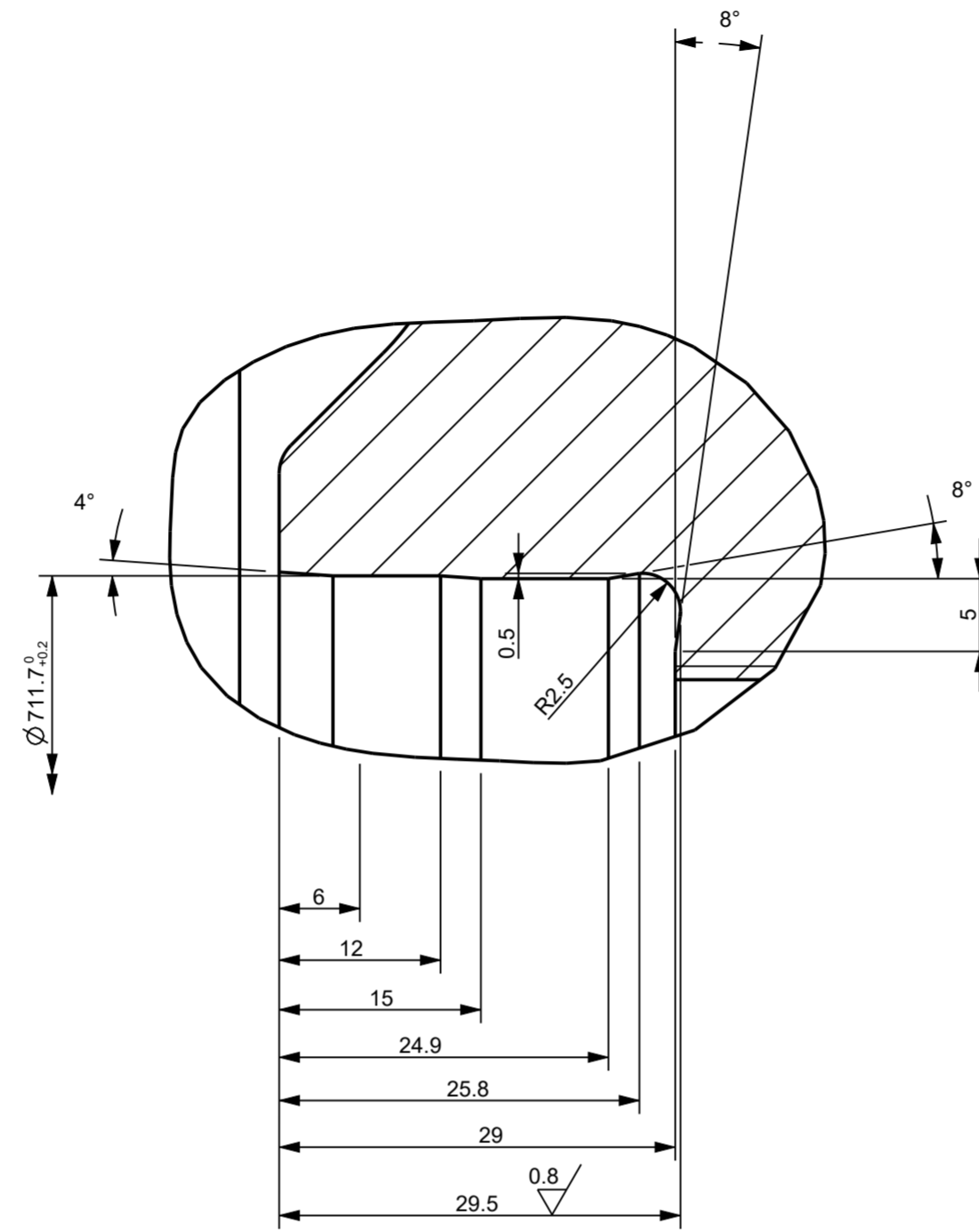
ASSEMBLY DRG No. --	DRAWN	M.N.
--	CHECKED	N.T.N.
CLASS 21E	APPROVED	B.E.D.
TYPE LOCOMOTIVE	DATE	2023/04/12
	SCALE	1:5
DOCUMENT REFERENCE No.	PD_PELG_KLP_DRW_176Z	

KILNER PARK WHEELS		MATERIAL STEEL 17CrNiMo6 OR 18CrNiMo7-6 PLATE 150
GEAR WHEEL		
21E		
SHEET 1 OF 2		
TRANSNET ENGINEERING		No. PELG 176Z 0575 REV. -

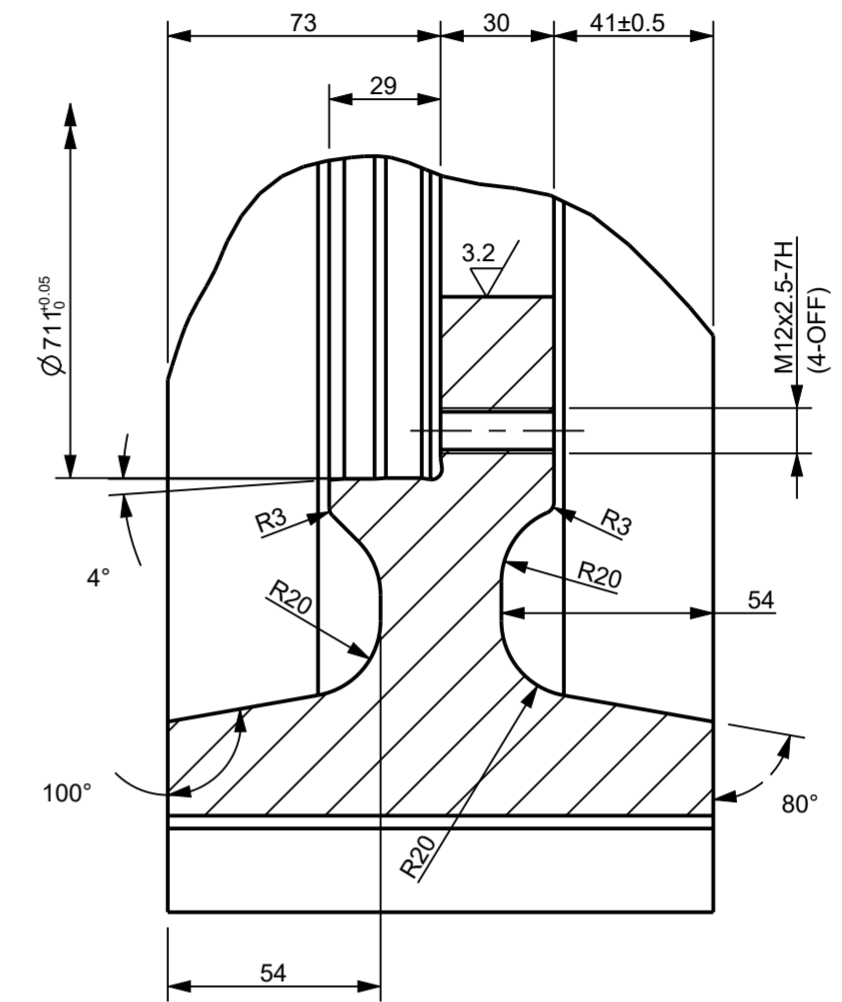
AMENDMENTS	
MASS	202.67 Kg



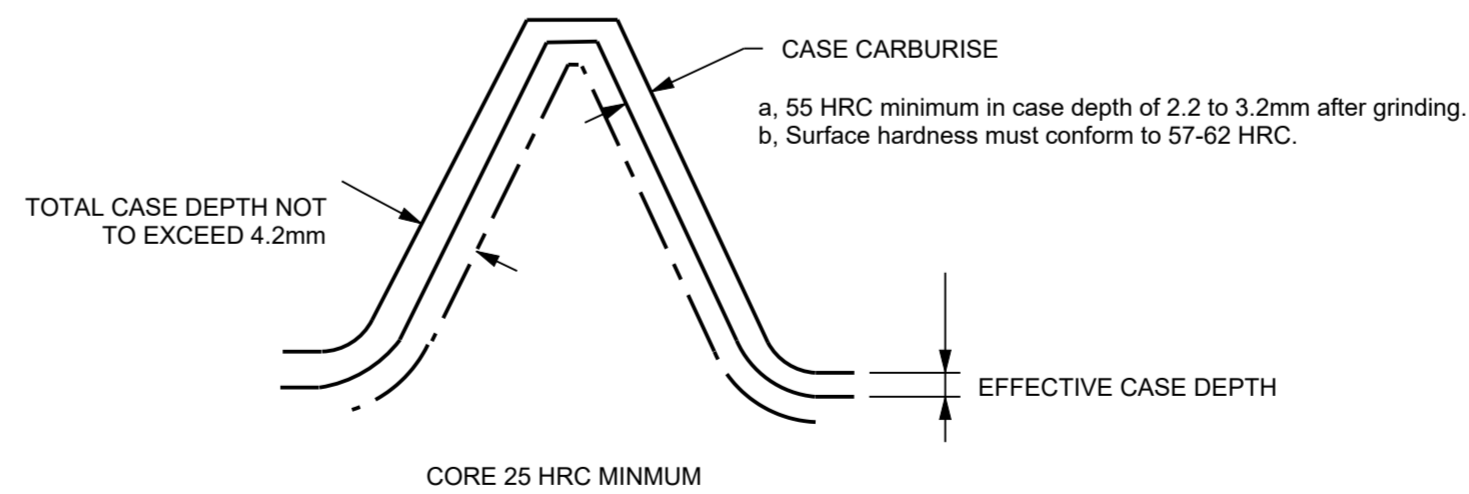
SECTION C-C
SCALE 1:2



DETAIL B
SCALE 2:1



DETAIL A
SCALE 1:2



AMENDMENTS	
MASS	202.67 Kg

COPYRIGHT THIS DRAWING TOGETHER WITH THE COPYRIGHT IS THE PROPERTY OF TRANSNET THIS DRAWING OR ANY PART THEREOF IS NOT TO BE COPIED OR OTHERWISE REPRODUCED OR USED FOR MANUFACTURE OR ANY OTHER PURPOSE WITHOUT THE WRITTEN PERMISSION FROM CHIEF EXECUTIVE, TRANSNET ENGINEERING	ASSEMBLY DRG No. --	DRAWN	M.N.	KILNER PARK WHEELS GEAR WHEEL 21E - SHEET 2 OF 2	MATERIAL STEEL 17CrNiMo6 OR 18CrNiMo7-6 PLATE 150
	--	CHECKED	N.T.N.		
	CLASS 21E	APPROVED	B.E.D.		
	TYPE LOCOMOTIVE	DATE	2023/04/12		
		SCALE	1:5	TRANSNET ENGINEERING	No. PELG 176Z 0575 REV. -
A-2 PROJECTION	DOCUMENT REFERENCE No.	PD_PELG_KLP_DRW_176Z			