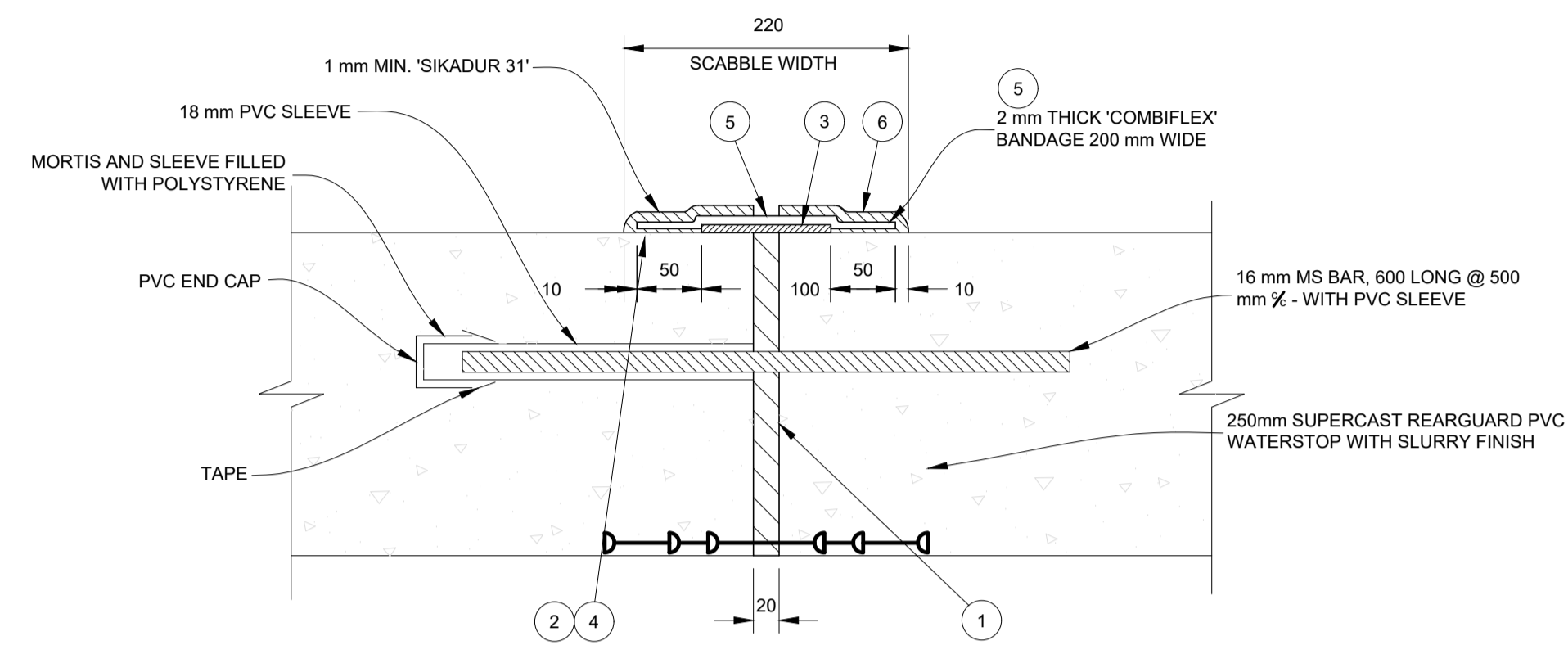
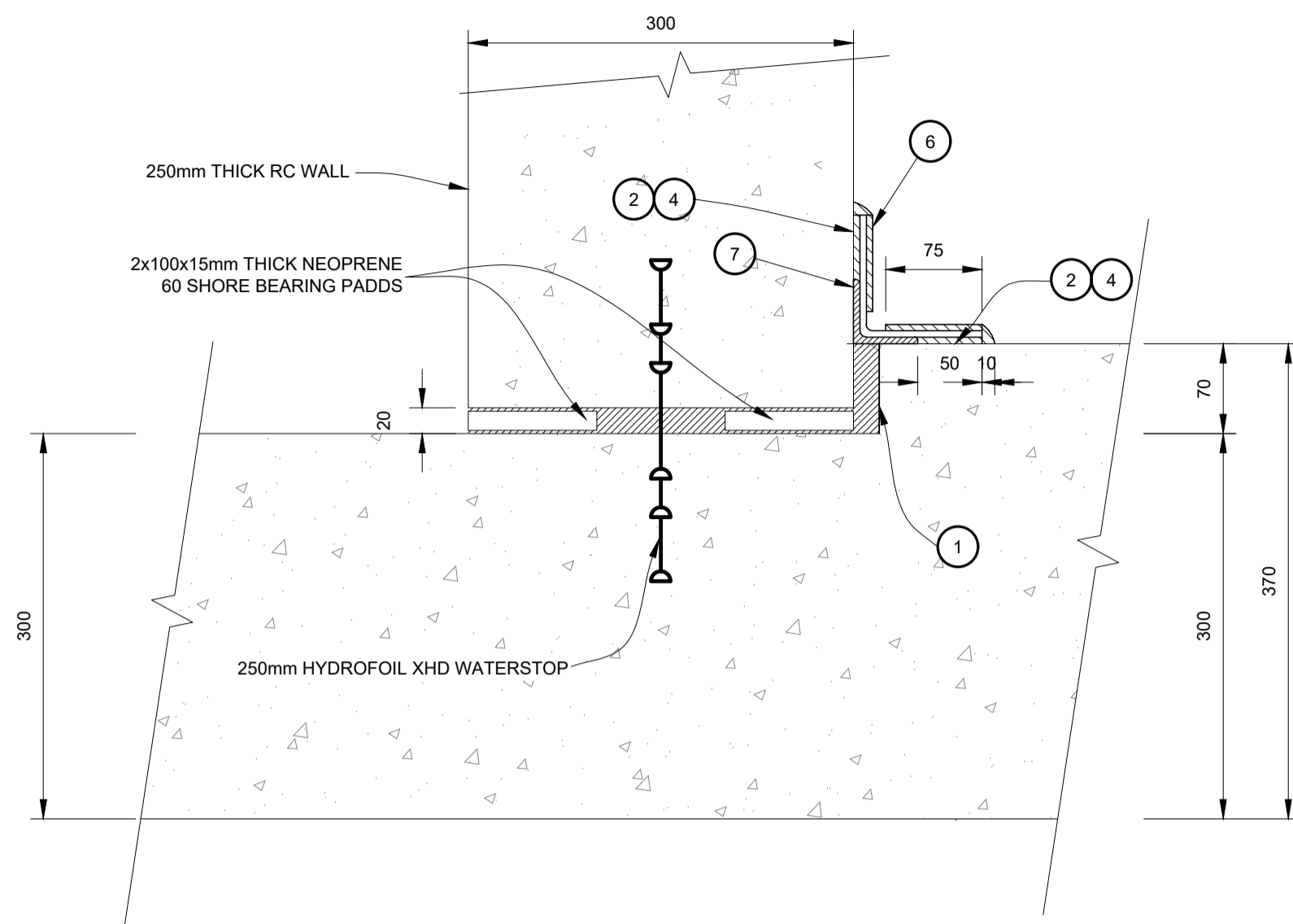


BANDAGE JOINT NOTE:
 ONLY MATERIALS THAT ARE NON-TOXIC TO BE USED FOR THE BANDAGE JOINT. THIS RESERVOIR IS FOR POTABLE DRINKING WATER USE AND THE CONTRACTOR IS TO CONFIRM THAT THE BANDAGE JOINT USED IS SUITABLE FOR THIS APPLICATION.



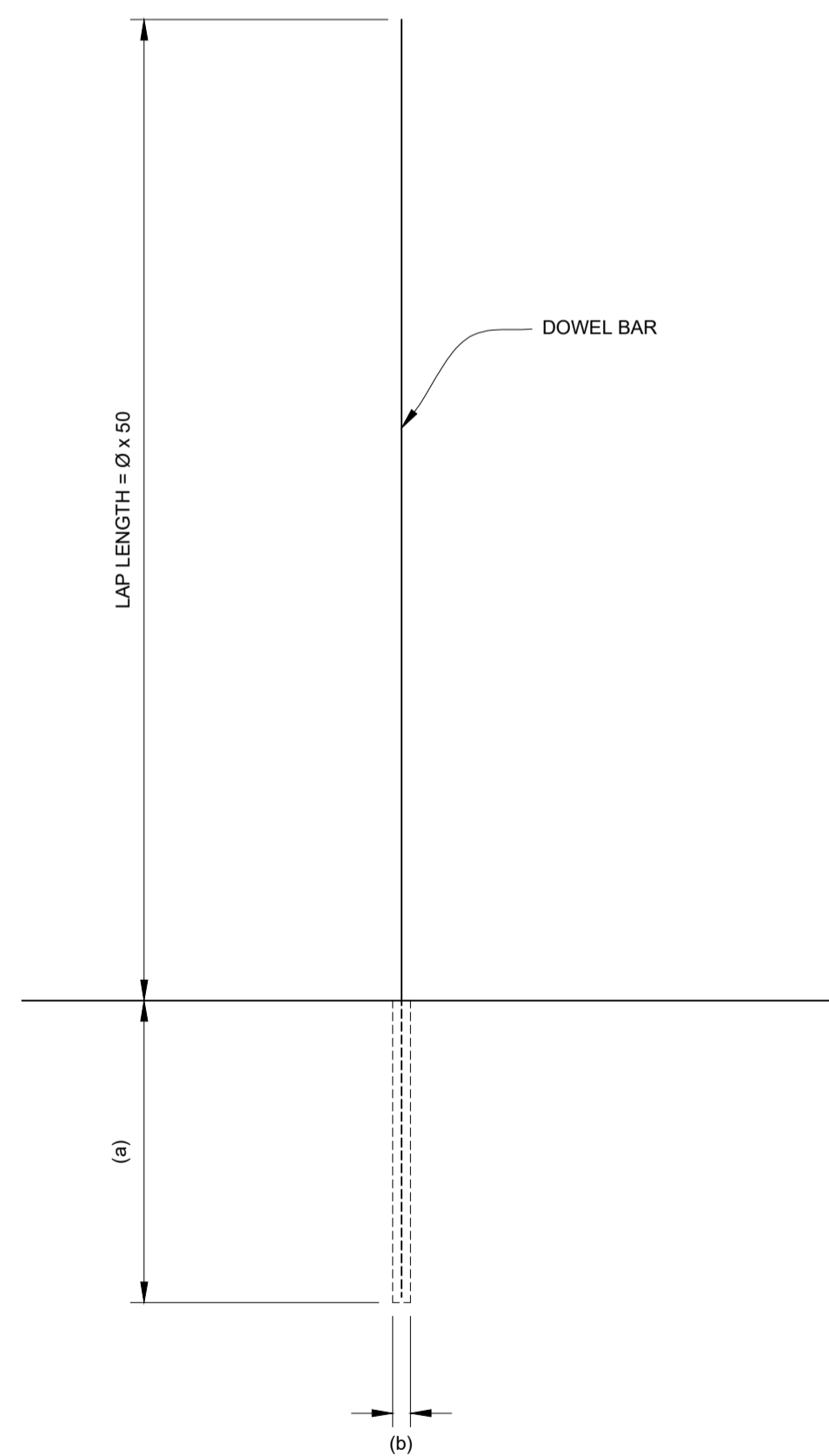
EXPANSION JOINT TYPE 'A1'
(FLOOR OR WALL)

SCALE 1:5



EXPANSION JOINT TYPE 'B1'
(FLOOR / WALL)

SCALE 1:5



DOWEL DETAIL

SCALE 1:10

DOWEL PROCEDURE

DRILL HOLE ACCORDING TO BAR Ø TO CORRECT DEPTH AND CLEAN PROPERLY (BLOW-OUT, ETC.)
 IF SIDES CANNOT BE MADE ROUGH UNDER-REAM HOLE
 POUR MIN 250 ml EPIDERMIX 372 INTO HOLE
 PRE-MARK DEPTH OF HOLE ONTO BAR AND PLACE BAR 220 DEEP INTO HOLE WITH EPOXY

BAR DIAMETER	Y10	Y12	Y16	Y20
DEPTH(mm)	220	265	350	440
HOLE Ø	12,5	15	20	25

BANDAGE JOINT SPECIFICATION

- FORM JOINT WITH 20 mm 'JOINTEX' CLOSED CELL POLY-ETHYLENE OR SIMILAR APPROVED JOINT FILLER, MIN. DENSITY 100 kg/m³.
- CONCRETE SURFACE PREPARATION
 - THE SURFACE LAITANCE IS TO BE REMOVED DOWN TO THE AGGREGATE, 10 mm WIDER EACH SIDE THAN THE BANDAGE, USING PNEUMATIC SCABBLING TOOLS.
 - REMOVE ALL CHIPPINGS AND DUST BY STEEL WIRE BRUSH AND VACUUM CLEANER.
- JOINT INSTALLATION
 - PLACE 75 x 3 mm PVC BACKING STRIP CENTRALLY OVER JOINT TYPES 'A', OR NAIL IN POSITION 50 x 50 x 2 mm ALUMINIUM ANGLE OVER JOINT TYPES 'B'.
 - APPLY 'SIKADUR 31' ADHESIVE 2mm THICK AND MIN. 50 mm WIDE, TO THE PREPARED SUBSTRATE ON EITHER SIDE OF THE PVC / ALUMINIUM STRIP IN ACCORDANCE TO THE MANUFACTURER'S SPECIFICATION.
 - PLACE PREVIOUSLY ACTIVATED 'COMBFLEX HYPALON' BANDAGE 150 OR 200 mm WIDE, OVER THE JOINT WITH THE RED MASKING STRIP FACING UP. ROLL INTO 'SIKADUR 31' UNTIL THE ADHESIVE PROTRUDES THROUGH THE PERIMETER HOLES. APPLY A SECOND (1 mm THICK) COAT OF 'SIKADUR 31' ON TOP OF THE SHEETING AND 10 mm EITHER SIDE OF THE JOINT.
 - REMOVE THE RED MASKING STRIP FROM THE CENTRE OF THE JOINT BEFORE THE 'SIKADUR 31' HAS SET.
- REFERENCE TO ANY BRAND NAMES SHALL BE INTERPRETED AS THE STANDARD OF MATERIAL ACCEPTED BY THE ENGINEER. OTHER MATERIALS WILL BE CONSIDERED SUBJECT TO APPROVAL.

FOR TENDER PURPOSES

COPYRIGHT RESERVED

RA	REVISED PROJECT DESCRIPTION	2022/06/09	P.M
Rev. Her.	Description Beskrywing	Date Datum	By Deur

AMENDMENTS/WYSIGING

SERVICE	DIENS
---------	-------

WATER

DESIGNED/ONTWERP	J. LUCKHOFF
DRAWN/GETEKEN	I.NEL
CAD FILE NAME/CAD LEËR NAAM	N3110W7100RA-003RA.dwg
CHECKED/NAGESIEN	W.J. STRYDOM (jnr)
APPROVED/GOEDGEKEUR	W.J. STRYDOM (jnr)

ENDECON
UBUNTU (PTY) LTD
 ENGINEERING CONSULTANTS
 P.O. BOX 10345
 NELSPRUIT
 1200
 Tel:(013) 755 1190
 Fax:(013) 755 4904

CLIENT KLIËNT

Nkangala District Municipality

PROJECT PROJEK

LOSKOP REGIONAL BULK WATER SUPPLY SCHEME: WORK PACKAGE 2

TITLE TITEL

10 MI RESERVOIR JOINT DETAILS

DATE/DATUM DECEMBER 2021

SCALE/SKAAL AS SHOWN

SCALE REF. SKAAL VERWYS.

meter

CONSULTANT DWG. NO. KONSULTANT TEK. NR.
N/3110/W/7/101/RA

CLIENT DWG. NO. KLIËNT TEK. NO.