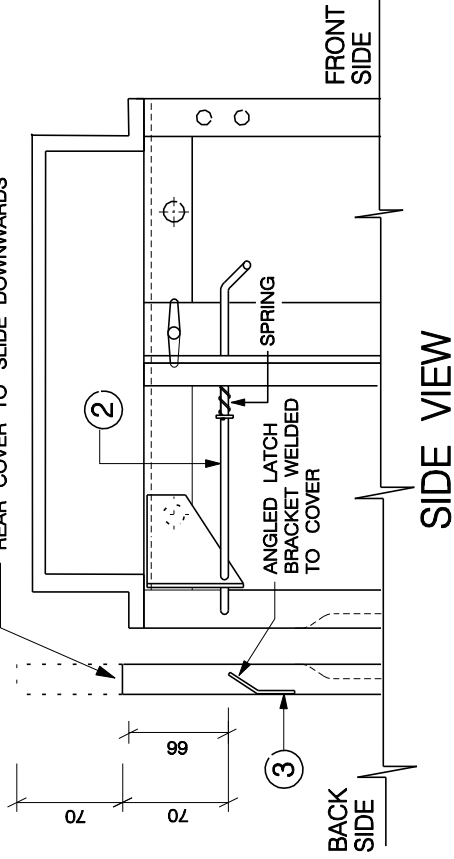




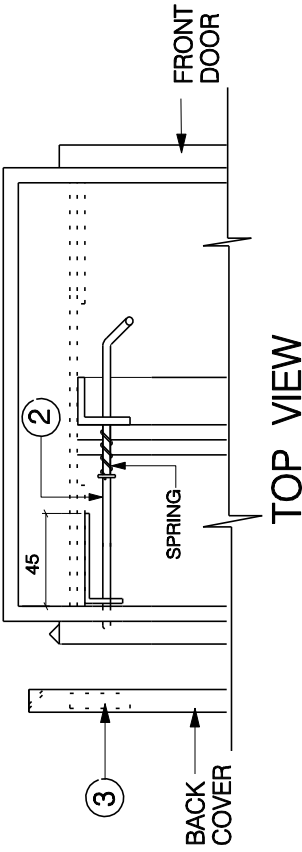
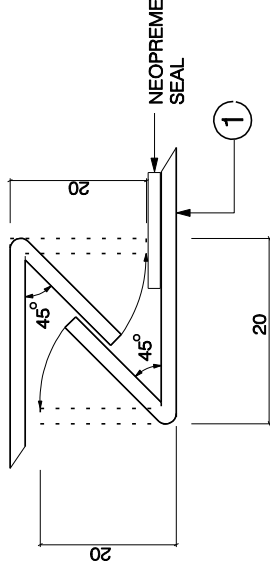
CENTLEC (Pty) Ltd

REAR COVER TO SLIDE DOWNWARDS



SIDE VIEW

DETAIL OF BEND



TOP VIEW

NOTE :

BACK COVER TO SLIDE DOWNWARDS
TO BE HELD IN POSITION BY 6 x 50 mm
OVERBENDED LIPS (45°) OR ANY APPROVED
METHOD AT 6 POINTS AND HELD DOWN
BY TWO SPRING LOADED BARREL BOLTS

ITEM	QTY	DIM; MAT; TYPE	DESCRIPTION
①	6	50 x 20 x 2 ; 3CR12 : LIP	HOOKING LIP (Overlapping)
②	2(1)	170 x 8 Dia ; ANODISED STEEL ROD	BARREL BOLT, SPRING LOADED
③	2(1)	40 x 60 ; T = 2, 3CR12	ANGLED LATCH BRACKET WELDED TO DOOR

SEE DETAIL

COVER and FRAME TO BE BENDED
AT 45° AT 6 PLACES TO SLIDE OVER
FROM THE TOP

REVISION DATE : 2007 - 04 - 04

CENTLEC (Pty) Ltd
Reg No 2003/0162/07

PRIVATE BAG X14, BRANDVORSTADT, 9201
Tel: 051 - 402238 Fax: 051 - 402238

DESIGNED	ONTWERP/DATE	DATUM/FIRST	EERSTE	TEKNAAR/DEVELOPMENT	ONTWERP &	CUSTOMER SERVICES	KLIEN/CLIENTS	CHIEF ENGINEER	HOOFD/ENGINEUR	TITEL
K BOOYSEN	2007-11-13	2007-11-13	2007-11-13	2007-11-13	2007-11-13	2007-11-13	2007-11-13	2007-11-13	2007-11-13	METERBOX
DRAWN	GETEKEN/SCALE	SKAAL	MOESIE/UTILIZATION	INGENIEUR/ENGINEERING	VERSPREIDING/DISTRIBUTION	MANAGER/EXECUTIVE	MANAGER/EXECUTIVE	MANAGER/EXECUTIVE	MANAGER/EXECUTIVE	BACK DOOR COVER LOCKING MECHANISM
N VERMEULEN	N.T.S	N.T.S	P. MOHAPI (ACTING)	X.FAKU	LG KRITZINGER (Pr Eng, Pr Ing)	INGENIEUR/ENGINEERING	INGENIEUR/ENGINEERING	INGENIEUR/ENGINEERING	INGENIEUR/ENGINEERING	DRAWING No. TS - 5 - 57
										TEKENING No. REV. 0
										VERWYS.

THE C.A.D. REFERENCE NUMBER IS: TS-5-57

A4 SHEET