

LEGEND

AC Cables
PV DC Cables
DC Cables
Ethernet Cable (RJ45)

Drawing Notes

- ① Bi Directional current flow
② Inverter to Signal Generator to Startup When Inverter battery @ 35% SOC

GENERAL NOTES

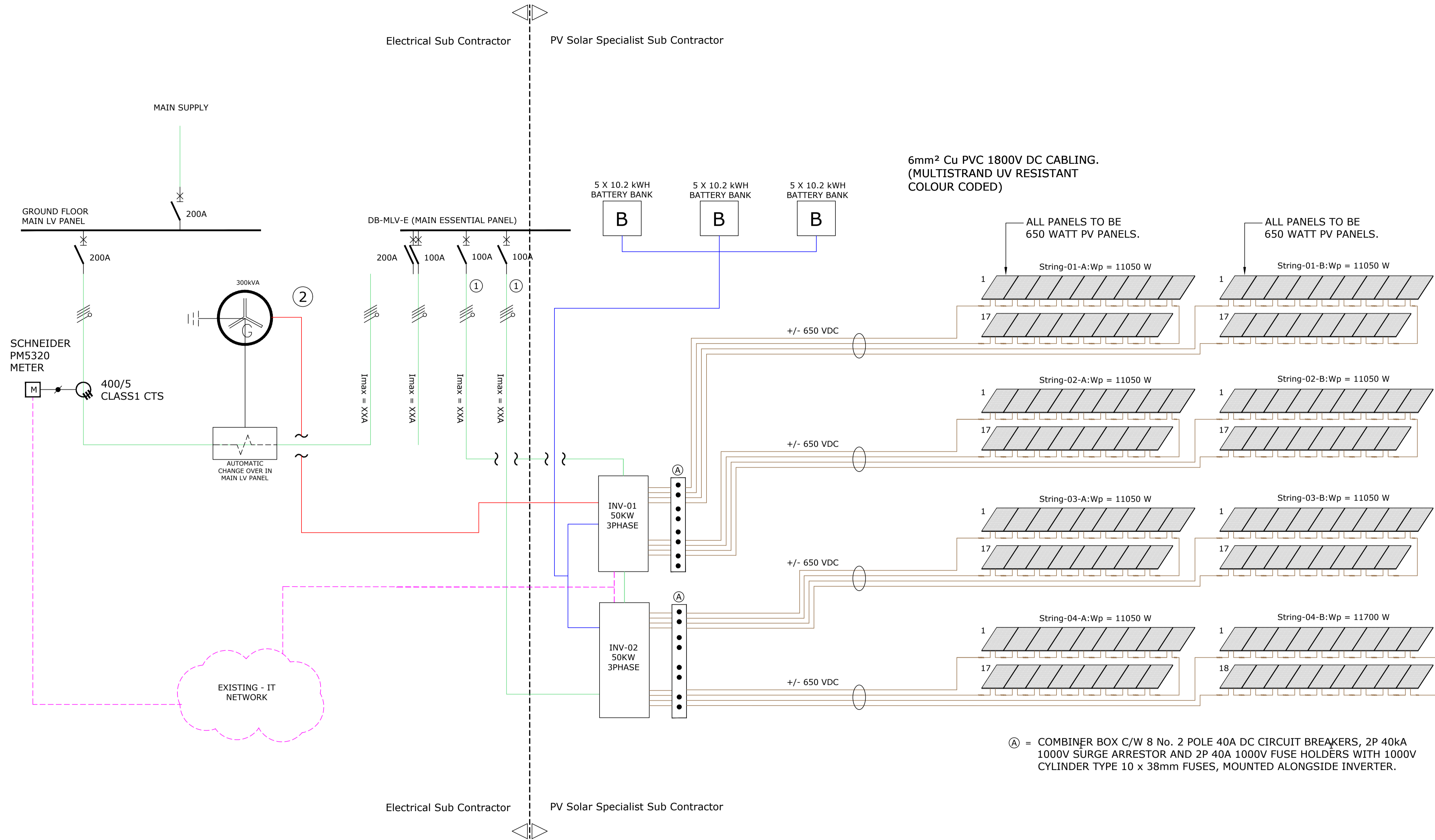
This drawing is issued for Electrical purposes only, and should be read in conjunction with the Electrical Specification. Setting out of Electrical and Electronic accessories are to be as indicated on Architects details.

Refer to Architects and Structural Drawings for all building dimensions, latest building revisions and services.

Do not scale this drawing.

All work to comply with relevant Standards, Codes of Practice, Specification and Regulations.

Notwithstanding anything to the contrary, all rights reserved. No part of this drawing may be reproduced in any material form (including photo-copying or storage in any medium or by electronic means and whether or not transiently or incidentally to some other use of this drawing). In addition, this drawing may not be used for any purpose or reason other than for which it was originally issued, without written permission of the author.



Ⓐ = COMBINER BOX C/W 8 No. 2 POLE 40A DC CIRCUIT BREAKERS, 2P 40kA 1000V SURGE ARRESTOR AND 2P 40A 1000V FUSE HOLDERS WITH 1000V CYLINDER TYPE 10 x 38mm FUSES, MOUNTED ALONGSIDE INVERTER.

REV	DATE	BY	DESCRIPTION	CHK
0	13/09/24	CW	Original Issue	
REVISIONS				

JMK

Approved in Principle
Justin Mckelvie-King
Pr Eng : 20120548



PROJECT/SERVICES

Samora Machel Police Station
Electrical Installation

TITLE
Grid Tied Photovoltaic System -
Schematic

ENGINEER:	DRAWN BY:	DATE:	CHECKED:	SCALE:
MK	CW	28/08/24		NTS
PROJECT No.	DRAWING No.	SHEET:	1 of 1	REV:
32308	701			0
FILE: 32308_701				
LAYERS:				

NOTES: (1) – Contractor to ensure max distance between draw boxes 20 metres notwithstanding anything to contrary.										(2) – Draw boxes required after every second 90 deg. bend or 180 deg. total of slow bends.										(3) – All unwired conduits to be provided with draw wires. These will be withdrawn and checked at random.										(4) – Cast in conduits to be spaced 35mm. minimum.																																																																																																			
<div>100x100 CONDUIT BOX. 100x100 CONDUIT BOX AT 500AFL. 100x100 CONDUIT BOX AT 1400AFL. 100x50 CONDUIT BOX. 100x50 CONDUIT BOX AT 300AFL. 100x50 CONDUIT BOX AT 1400AFL. ROUND CONDUIT BOX. CLUSTER BOX (SIZE AS NOTED).</div>										<div>ROUND DRAW BOX 100x100 DRAW BOX 100x50 BOX BEHIND POWER SKIRTING CONDUIT TURNED UP ("D" FOR DOWN) DOWN CONDUCTOR TO EARTH OR EARTH TIE.</div>										<div>ROUND CONDUIT BOX FOR: DM – DOOR MONITOR CM – CAMERA AA – ACCESS ALARM AC – ACCESS CONTROL CR – CARD READER COM – COMMUNICATION/INTERCOM BOM – BACK GROUND MUSIC EL – ELECTRIC LOCK/STRIKE</div>										<div>20mm. DIA. CONDUIT. 25mm. DIA. CONDUIT. 32mm. DIA. CONDUIT. 50mm. DIA. CONDUIT. SECTION OF CONDUIT OMITTED FOR CLARITY. SURVEY TWIN AND EARTH CABLE ROUTE</div>										<div>OVERHEAD CAST-IN OVERHEAD ON SURFACE OR LAID ON CEILING. FLOOR SUB CAST-IN FLOOR SURFACE (IN FLOOR VOID). POWER SKIRTING TRUNKING CABLE SLEEVE CABLE TRAY/LADDER</div>										<div><div>DB</div><div>SQUARE GALV. STEEL DRAW TRAY SIZE AS SHOWN.</div><div>TELEPHONE JUNCTION BOX.</div><div>INTERCOM JUNCTION BOX.</div><div>DATA/COMMS JUNCTION BOX.</div><div>SECURITY, ETC. JUNCTION BOX.</div><div>DISTRIBUTION BOARD POSITION.</div><div>DB – BOARD DESIGNATION NUMBER.</div></div>										<div>16A SANS 164-1 SWITCHED SOCKET OUTLET (SSO). 16A SANS 164-1 DOUBLE SSO. 16A SANS 164-1 SSO ON PEDESTAL. 16A SANS 164-2 3 PIN SSO. 16A SANS 164-1 & 164-2 COMBINATION SSO. 16A SANS 164-4 RED SSO (7 SHAWED EARTH PIN). 16A SANS 164-4 RED SSO ON PEDESTAL. 3 PHASE C-FORM SSO. 2 POLE ISOLATOR 3 POLE ISOLATOR 4 POLE ISOLATOR</div>										<div>6A SANS 164-3 I/S SOCKET OUTLET. SINGLE LEVER ONE WAY LIGHT SWITCH. INTERMEDIATE LIGHT SWITCH. TWO WAY LIGHT SWITCH. MOTION SENSOR LIGHT SWITCH WITH MOTION SENSOR</div>										<div><div>LINEAR LUMINAIRE</div><div>BULKHEAD/DOWNLIGHTER, ETC.</div><div>WALL MOUNTED LUMINAIRE</div><div>POLE MOUNTED LUMINAIRE.</div></div>										<div>TELEPHONE POINT. TELEPHONE POINT ON PEDESTAL. DIRECT OUTSIDE LINE TELEPHONE POINT (CALL BOX). TV OUTLET. DATA/COMMS OUTLET.</div>										<div>BELL PUSH. BELL OUTLET. SIGN POINT. CLOCK OUTLET. PHOTOCELL.</div>										<div>REFERENCE TO QUANTITY i.e. 3No. REFERENCE TO A DETAIL i.e. DETAIL 2. REFERENCE TO AN ELECTRICAL NOTE i.e. NOTE 4. REFERENCE TO A STANDARD DRAWING i.e. STANDARD DRAWING No.34</div>										<div>CABLE NUMBER – REFER CABLE SCHEDULE FOR DETAILS. LUMINAIRE TYPE "B" – REFER LUMINAIRE SCHEDULE.</div>									