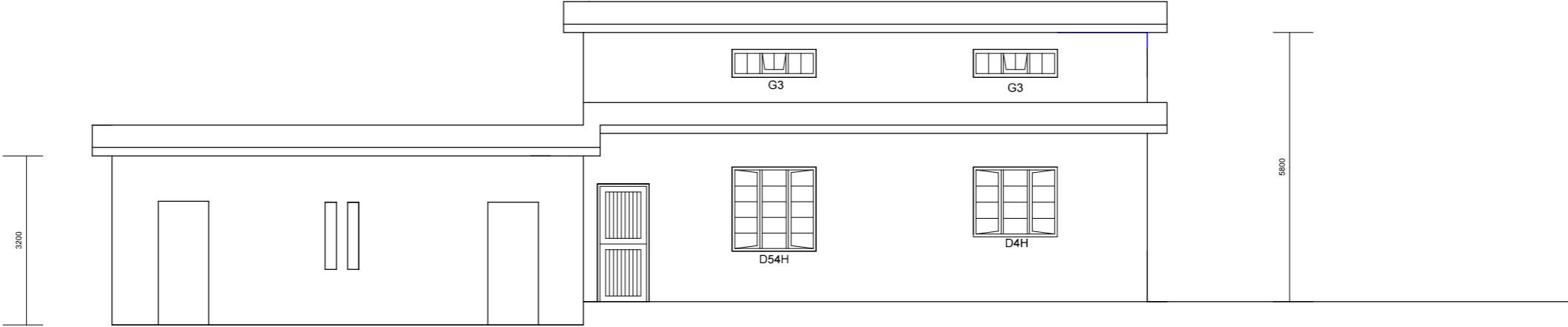


EAST ELEVATION



WEST ELEVATION

NO.	SPECIAL NOTES:		<div>DEPARTMENT OF RURAL DEVELOPMENT AND AGRARIAN REFORM PROVINCE OF THE EASTERN CAPE</div> <div>ENGINEERING SERVICES BLOCK H BATHANDWA NDONDO OFFICE PARK KOMANI 5319</div>	RURAL ABATTOIR	SCALE NTS	INDEX NO.
				ELEVATIONS: EAST & WEST	A3 ORIGINAL	PLAN NO. 6 OF 17