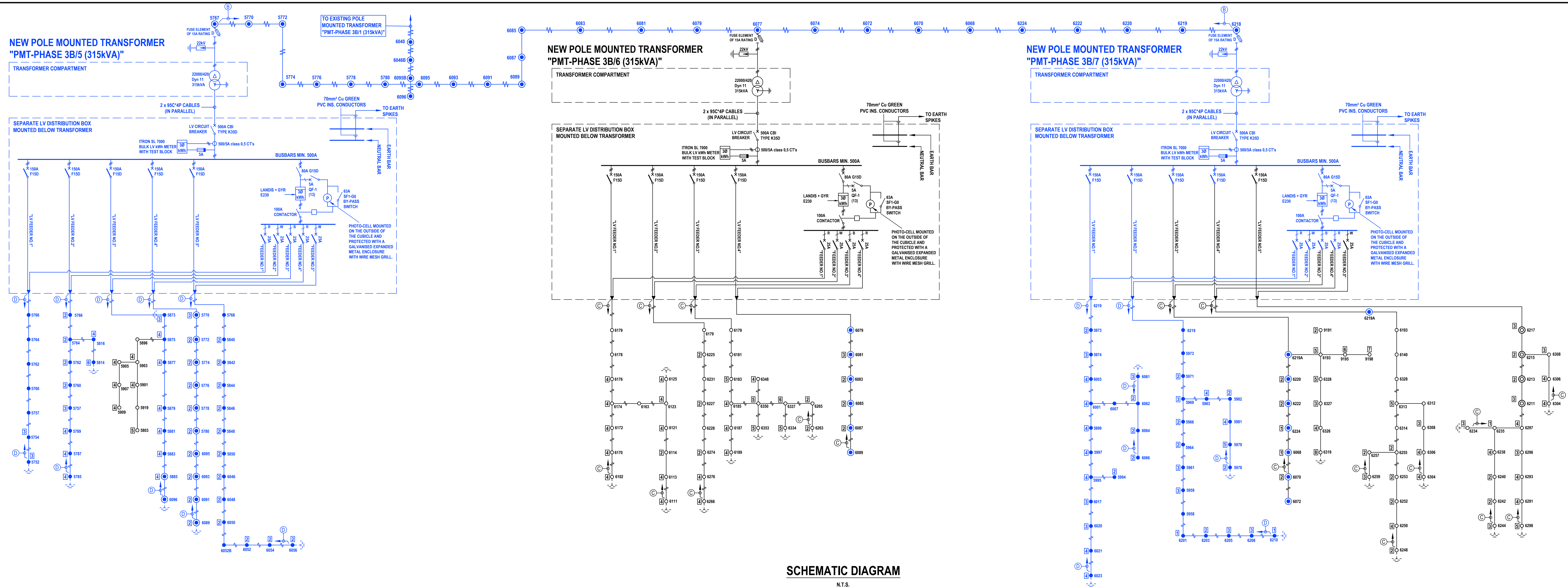


PLAN LAYOUT

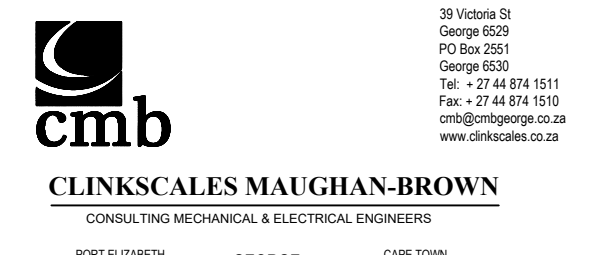
SCALE 1:1000



SCHEMATIC DIAGRAM

N.T.S.

- LEGEND**
- REFER TO DRAWING NO. S102 - STANDARD GRAPHICAL SYMBOLS FOR ELECTRICAL RETICULATION SYSTEMS.
- EXISTING INFRASTRUCTURE / EQUIPMENT
 - NEW INFRASTRUCTURE / EQUIPMENT
- MV (22kV) OVERHEAD OHN LINE**
- EXISTING 22kV BARE CONDUCTOR
 - NEW 22kV BARE CONDUCTOR, HARE 80/14 T2 ACSS VERTICAL CONSTRUCTION
 - NEW COMBINED MV AND LV POLE
 - EXISTING COMBINED MV AND LV POLE
 - EXISTING MV OR LV POLE
 - NEW MV OR LV POLE
- LV OVERHEAD ABC BUNDLED CONDUCTOR SIZES**
- NEW 3 x 50mm² AL + 54mm² AL + 1 x 25mm² AL
 - EXISTING 3 x 50mm² AL + 54mm² AL + 1 x 25mm² AL
- LV OVERHEAD SERVICE CONNECTION CABLE SIZES**
- PHASE COLOUR TO BE CONNECTED
 - STAY
 - STRAIN POINT
 - LV OVERHEAD BUNDLED CONDUCTOR
 - POLE NUMBER
 - PROP. STRUCTURE
 - EXISTING STAY
 - EXISTING PROP. STRUCTURE
 - EXISTING POLE
- NOTES**
- MV IN THIS CASE IS 22000 VOLT.
 - REFER TO ELSEWHERE ON THIS DRAWING FOR THE SCHEMATIC DIAGRAM FOR CONSTRUCTIONAL DETAILS AND CAPTURING DIAGRAMS REFER TO DRAWING NO. 10599/E02 TO 03.
 - ALL POLE POSITIONS SHOWN ARE PROVISIONAL AND WILL BE DETERMINED ON SITE IN CONJUNCTION WITH THE ENGINEER.
 - POLE POSITIONS TO BE CO-ORDINATED WITH THE SEWER AND WATER PIPE INSTALLATIONS.
 - DISTANCE BETWEEN CENTRE OF OVERHEAD LINE AND ERF BOUNDARIES, UNLESS SHOWN OTHERWISE: MINIMUM LINES - 200mm. ALL OTHER LINES IN ROAD RESERVES - 1000mm.
 - ALL STREETLIGHT EQUIPMENT IS FOR FUTURE INSTALLATIONS SWITCHED AT PMT, UNLESS SHOWN OTHERWISE.
 - UNLESS SHOWN OTHERWISE MV POLES SHALL BE 11m AND LV POLES 9m LONG.
 - UNLESS SHOWN OTHERWISE THE MIN. SPACING BETWEEN 22kV & LV CONDUCTORS SHALL BE 900mm.
 - EARTHING**
 - A) TO COMPLY WITH THE SPECIFICATION AND AMELI CODE OF PRACTICE FOR THE APPLICATION OF THE NEUTRAL EARTHING ON LOW VOLTAGE DISTRIBUTION SYSTEMS.
 - B) POLES AS SHOWN TO HAVE 50mm² BLACK PVC INSULATED COPPER DOWN EARTH CONDUCTOR. EARTHING NEUTRAL CONDUCTOR OF LV OVERHEAD LINE.
 - WHERE MV AND LV LINES RUN ALONG THE SAME ROUTE THE MINIMUM DISTANCE BETWEEN THE 22kV CONDUCTOR AND THE LV CONDUCTOR SUSPENSION POINTS SHALL BE 800mm.
 - POLE NUMBER LABELS ONLY TO BE PROVIDED ONCE CORRECT AND FINAL ERF NOTS ARE KNOWN.

NO.	DATE	DRAWN	DESCRIPTION
REVISIONS			
COPYRIGHT. ALL RIGHTS RESERVED.			
THIS DRAWING IS TO BE USED FOR THE ENGINEERING SERVICE DEPICTED ONLY.			
ELECTRICAL			
CLIENT			
KOUGA MUNICIPALITY			
			
PROJECT			
ELECTRIFICATION OF 259 HOUSES AT KRUISFONTEIN IN HUMANSDORP (DMRE WORK 2023/24)			
DRAWING TITLE			
PLAN LAYOUT & SCHEMATIC DIAGRAM			
DRAWN	DESIGNED	CHECKED	APPROVED
MMV	GSA	GSA	GSA
SCALE	DATE	CAD REF. NO.	DWG. SIZE
AS SHOWN	15/05/2023	10599-E-01	A0
DRAWING NO.	REVISION		
10599/E/01			