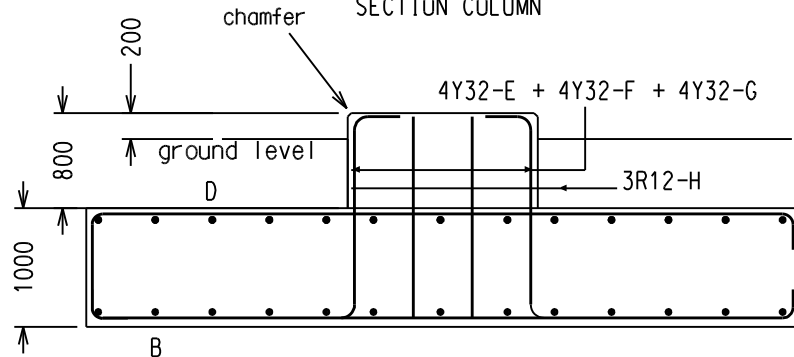
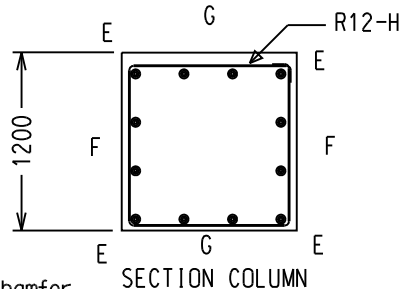
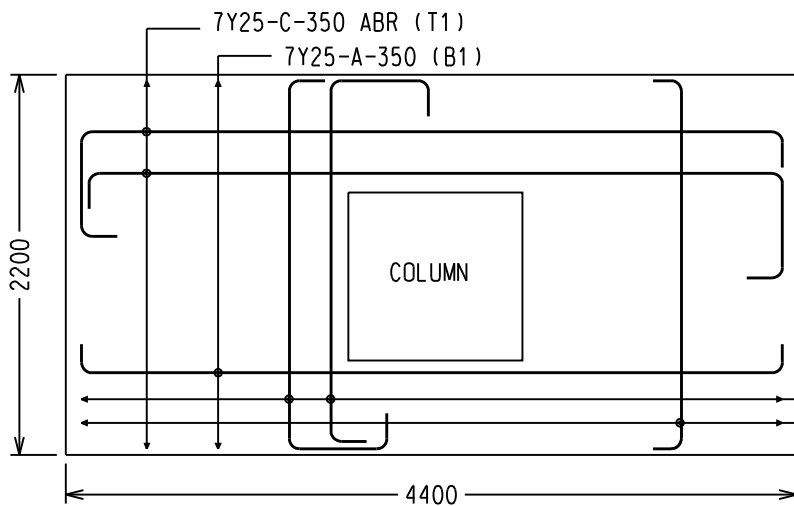


Cover:
 Bot:75 mm
 Sides:50 mm
 Top:50 mm
 Cols:30 mm



SECTION



Note: H.D. Bolts and baseplates are orientated on pairs of diametrically opposite bolts for the in-line and transverse directions.

Base Moment	550	kNm	excavation volume	15.5	m ³
Length	4400	mm	concrete volume	10.8	m ³
Width	2200	mm	backfill volume	4.9	m ³
Depth	1000	mm	concrete strength	25	MPa
Col Height	800	mm			
Col Width	1200	mm			
Bolt P.C.D.	as for structure				
H.D. Bolts					
Soil Bearing	165	kN/m ²			

743 kg 7700 steel kg/m³

No	Dia (mm)	Length (mm)	Mark	Code	A (mm)	B (mm)	C (mm)	D (mm)	Mass (kg)
7	Y25	4650	A	35	4300				123
13	Y25	2450	B	35	2100				120
7	Y25	5600	C	52	300	880	4300	(300)	148
13	Y25	3350	D	52	300	820	2100	(300)	165
4	Y32	2350	E	54	380	1730	(380)		58
4	Y32	2350	F	54	380	1730	(380)		58
4	Y32	2350	G	54	380	1730	(380)		58
3	R 12	4700	H	60	1140	1140			12

N.T.S.

PLAN

THIS DRAWING IS THE PROPERTY OF ESKOM

REV	DESCRIPTION	BY	CHKD	AUTH	DATE	PROJECT NO.
3	rationalised, data added	RAS	SM	MN	15/02/07	
2	clarification of drawing	RAS		BM	16/01/04	
1	alignment note added	RAS		MvR	19/09/03	

Eskom Distribution

AUTH: B Meyer
 DATE: 2003/07/04
 CHKD:
 DATE:
 DRAWN: R A Scott
 DATE: 2003/07/04

**MONOPOLE FOUNDATIONS
 STRAIN STRUCTURE
 550kNm MOMENT**

D-WC-7602

SET	SHEET	REVISION
07	07	03