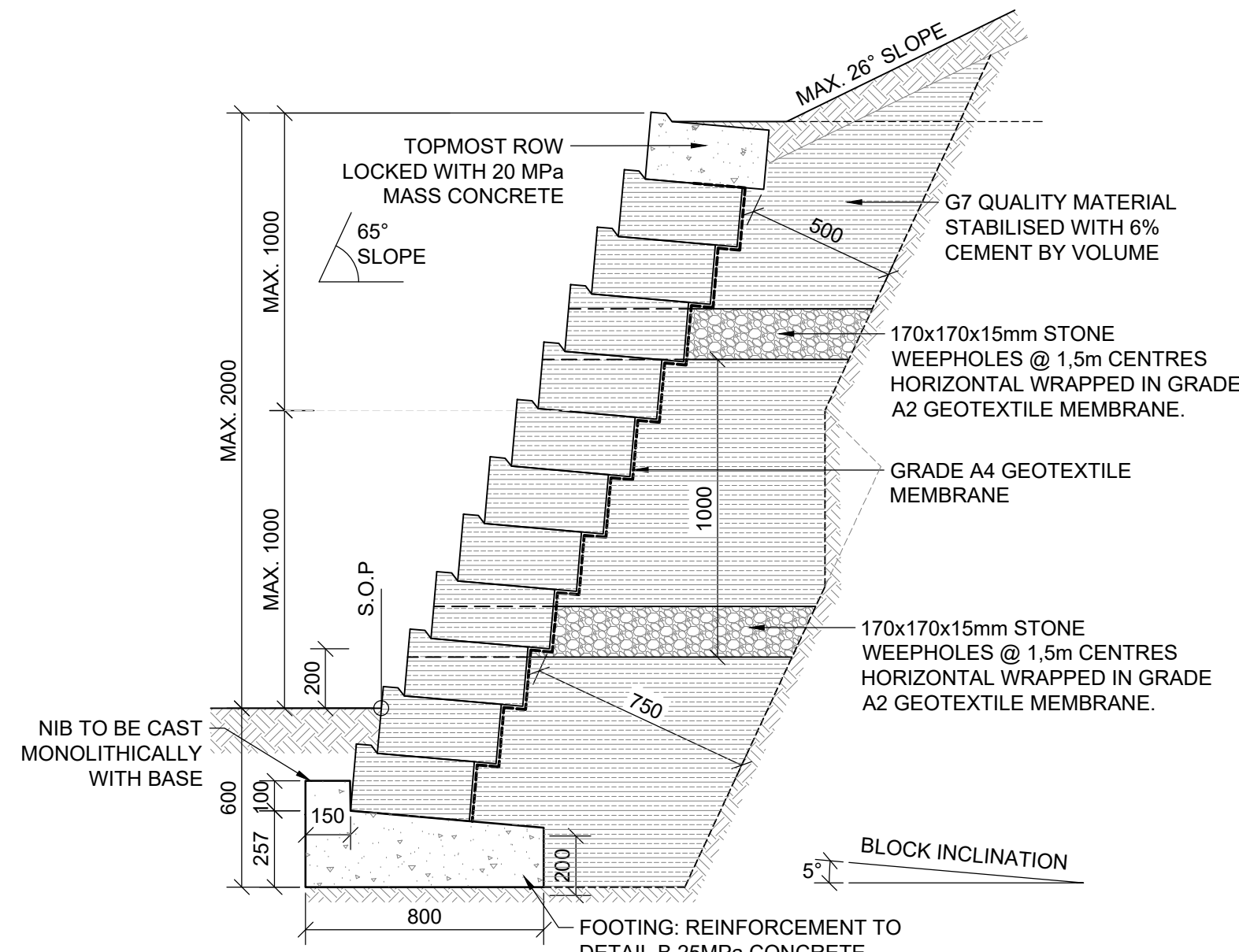
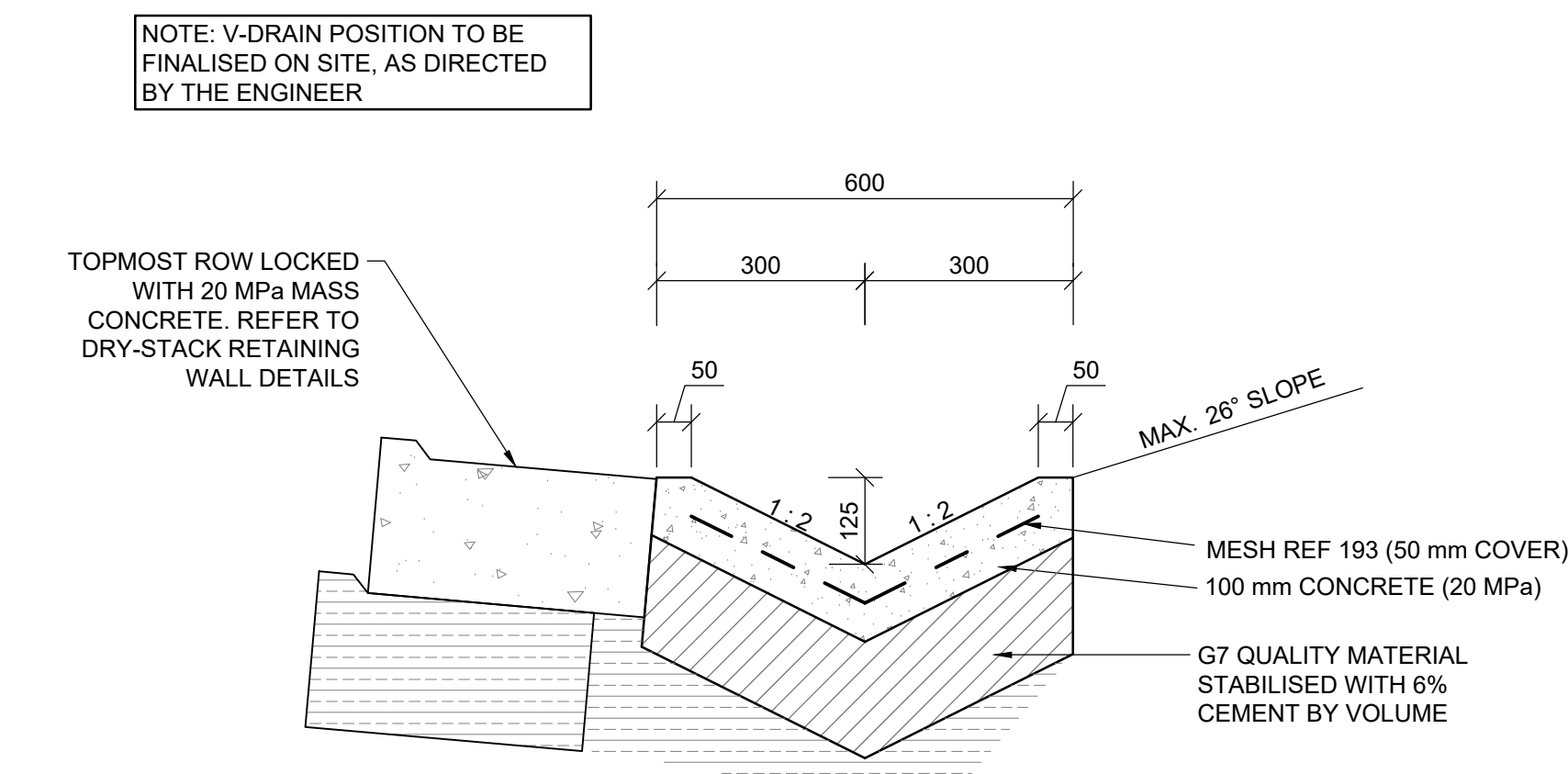


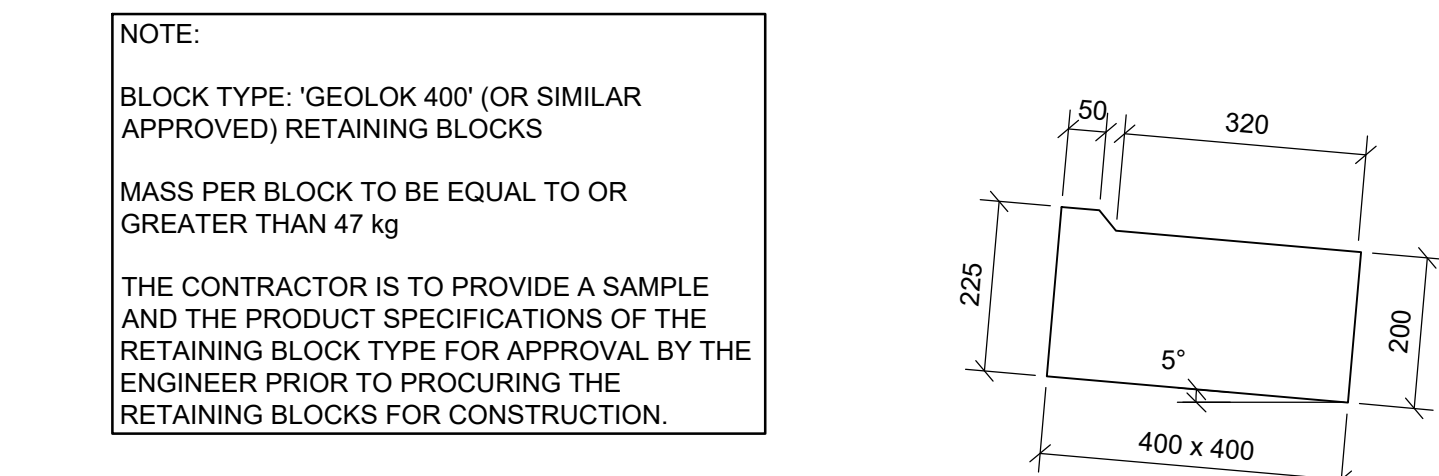
TYPICAL SECTION SHOWING DRY-STACK
RETAINING WALL (>0m TO 1m EXPOSED HEIGHT)
SCALE 1:20



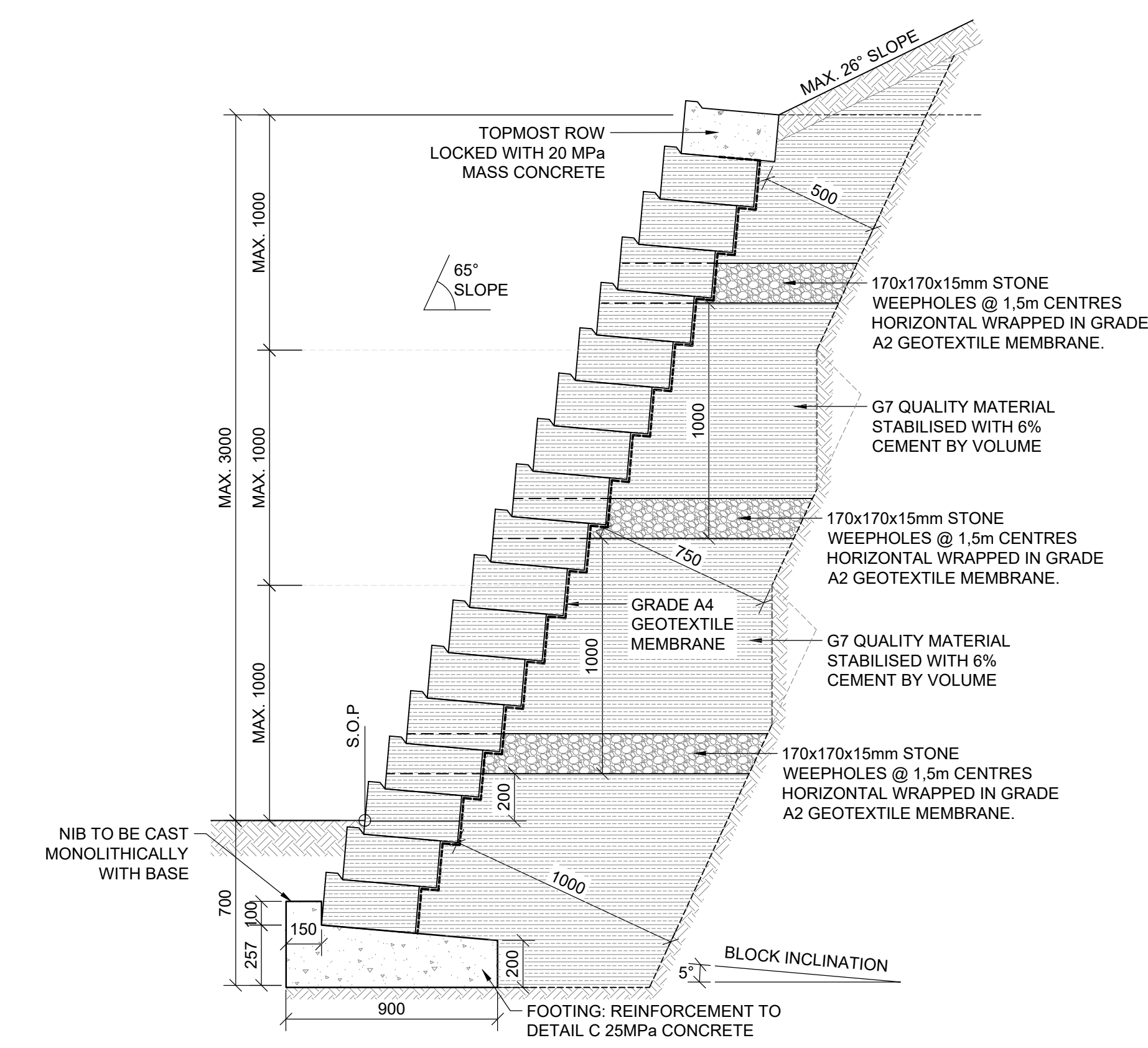
TYPICAL SECTION SHOWING DRY-STACK
RETAINING WALL (>1m TO 2m EXPOSED HEIGHT)
SCALE 1:20



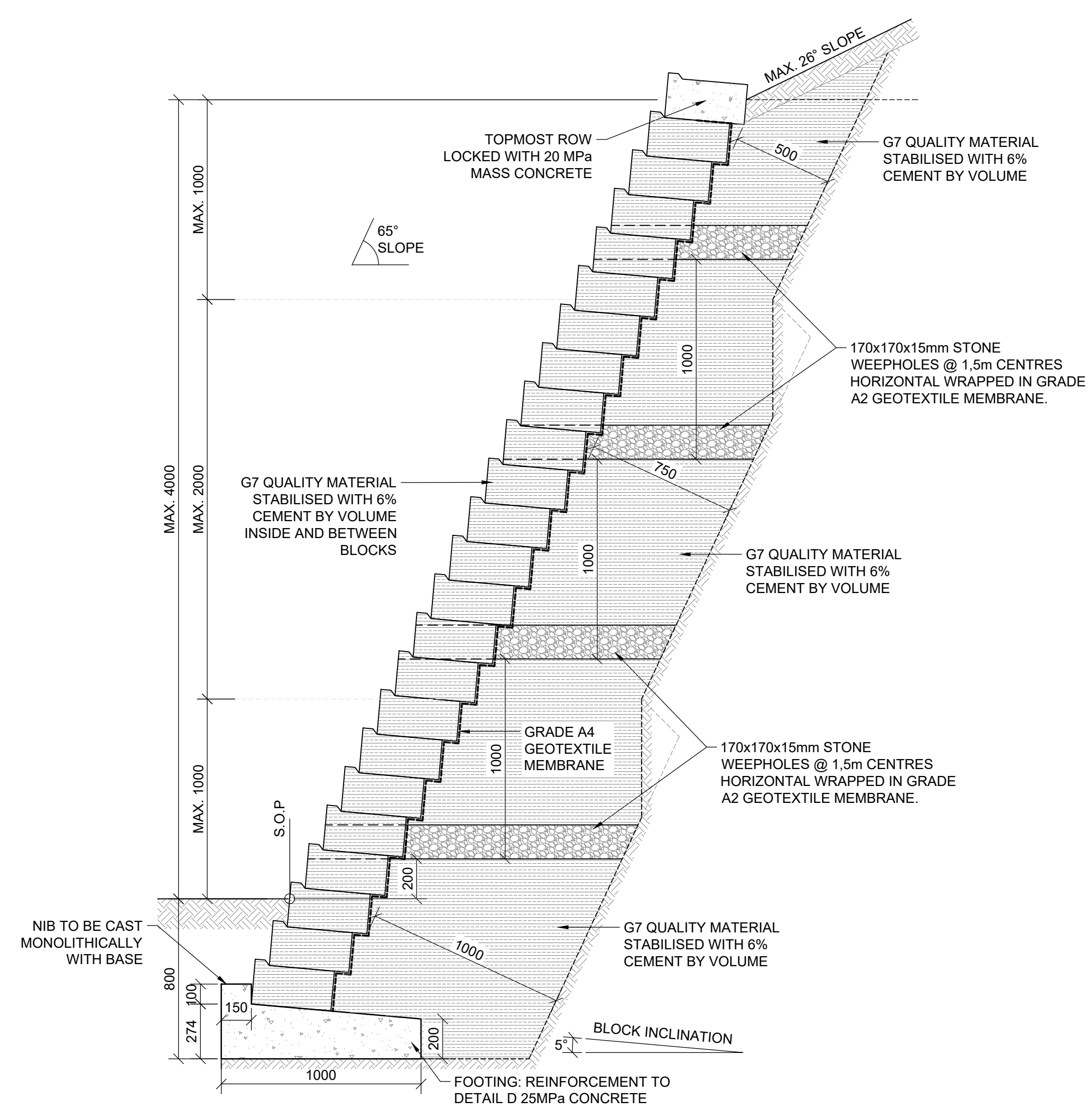
CONCRETE LINED V-DRAIN AT TOP OF
RETAINING WALL
SCALE 1:10



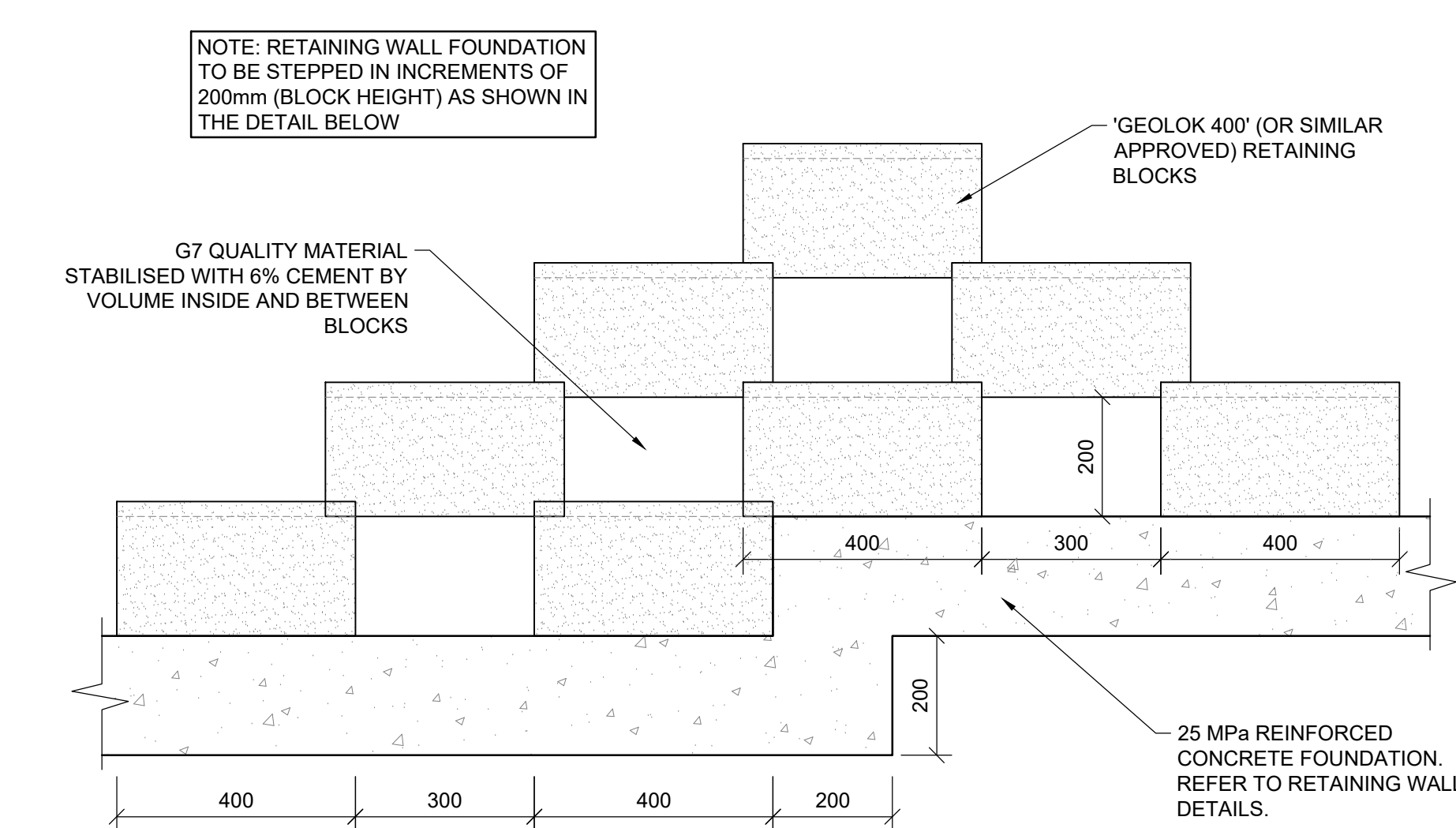
TYPICAL RETAINING BLOCK DETAIL
SCALE 1:10



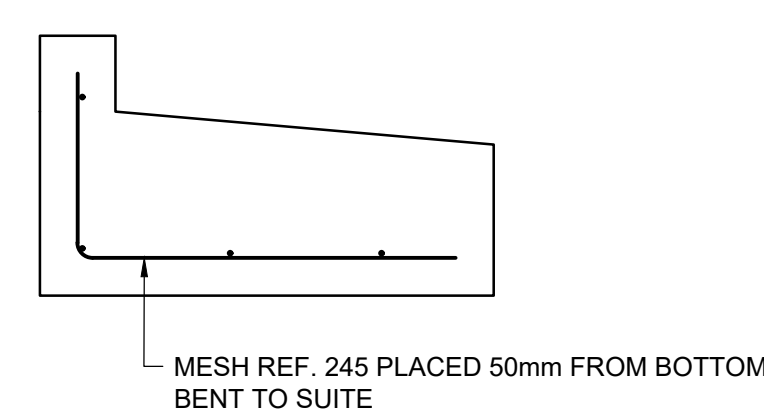
TYPICAL SECTION SHOWING DRY-STACK
RETAINING WALL (>2m TO 3m EXPOSED HEIGHT)
SCALE 1:20



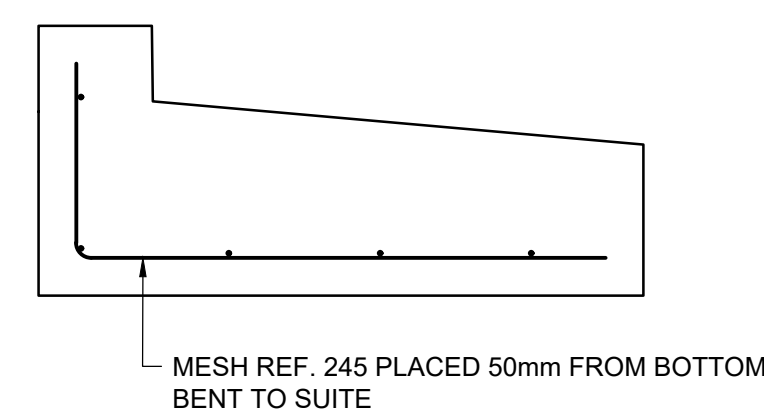
TYPICAL SECTION SHOWING DRY-STACK
RETAINING WALL (>3m TO 4m EXPOSED HEIGHT)
SCALE 1:20



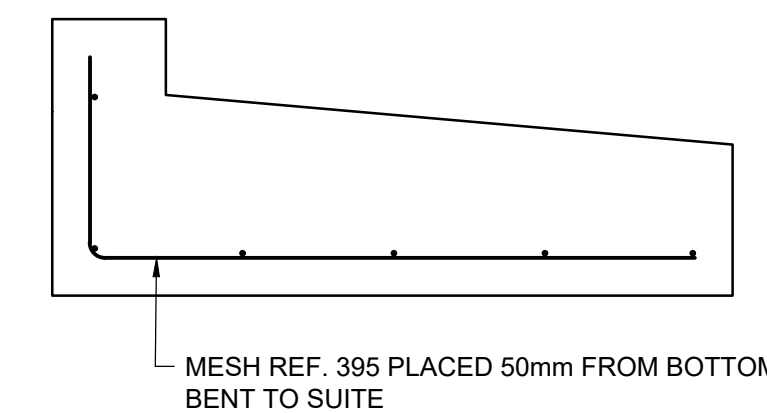
TYPICAL DRY-STACK RETAINING WALL STEPPED
FOUNDATION DETAIL



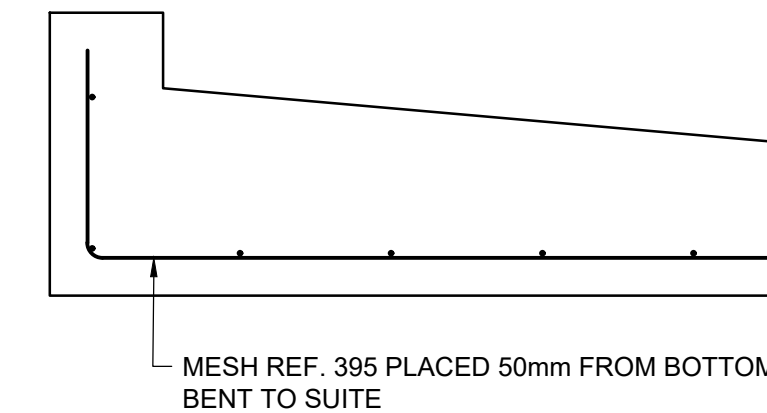
DETAIL A
SCALE 1:15



DETAIL B
SCALE 1:15



DETAIL C
SCALE 1:15



DETAIL D
SCALE 1:15

NOTE

- RETAINING WALL:
- ALL LEVELS AND DIMENSIONS TO BE CHECKED ON SITE
 - ALL CONCRETE WORK IS TO COMPLY WITH SANS 1200G
 - CONCRETE GRADE - FOUNDATION 25/19
 - ALL FOUNDATION EXCAVATIONS ARE TO BE INSPECTED BY THE ENGINEER PRIOR TO CASTING OF CONCRETE
 - ALL REINFORCING FIXING IS TO BE INSPECTED BY THE ENGINEER PRIOR TO CASTING OF CONCRETE
 - SIX CONCRETE CUBES TO BE TAKEN PER BATCH. THREE CUBES TO BE TESTED AT SEVEN DAYS. THE REMAINDER AT TWENTY EIGHT DAYS. THE RESULTS ARE TO BE FORWARDED TO THE ENGINEER FOR REVIEW AND APPROVAL
 - SET BOTTOM ROW OF BLOCKS IN WET CONCRETE
 - ALL BACKFILL TO BE COMPACTED TO 95% MOD AASHTO DENSITY
 - STORM WATER BEHIND THE TOP OF THE WALL TO BE MANAGED IN SUCH A MANNER AS TO PREVENT SCOUR BEHIND OR OVER-TOPPING OF THE WALL
 - THE CONTRACTOR IS TO PROVIDE A SAMPLE AND THE PRODUCT SPECIFICATIONS OF THE RETAINING BLOCK TYPE FOR APPROVAL BY THE ENGINEER PRIOR TO PROCURING THE RETAINING BLOCKS FOR CONSTRUCTION

SCALE (mm)



No. REFERENCE DRAWINGS

REV	DESCRIPTION	BY	DATE
P1	ISSUED FOR TENDER	Z.M	2023.05.30

Professional person S.SIRUPUTH P1TechEng Registration: 201470135

CLIENT



PROJECT

eTHEKWINI INCREMENTAL
SERVICES
AMAOTANA (ZWELISHA)
WARD 59

DETAILS

TYPICAL DRY STACK
RETAINING WALL DETAILS



SUITE E8106 STRATHMORE PARK, 305 MUSGRAVE ROAD, MUSGRAVE, DURBAN
e-mail: admin@mapafrica.co.za
website: www.mapafrica.co.za
FAX (031) 3092929 TEL. (031) 3095831

DESIGNED	Z.M	COPYRIGHT RESERVED	SCALES
DRAWN	Z.M	AS SHOWN	
APPROVED	A.S	PL	DATE 2022.02.24

TENDER No.

DRAWING No. 557/AMZW-PH2/904 REV P1

FOR TENDER