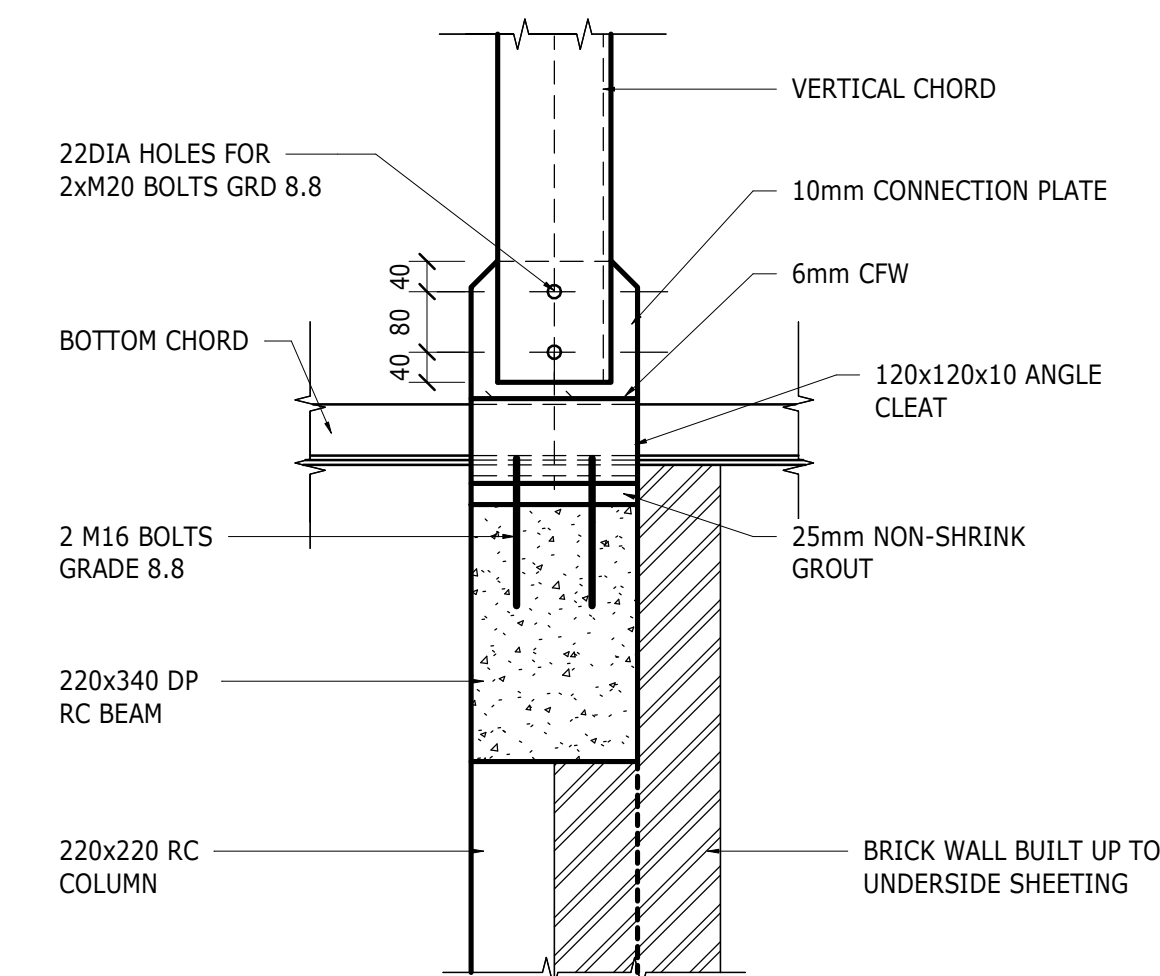
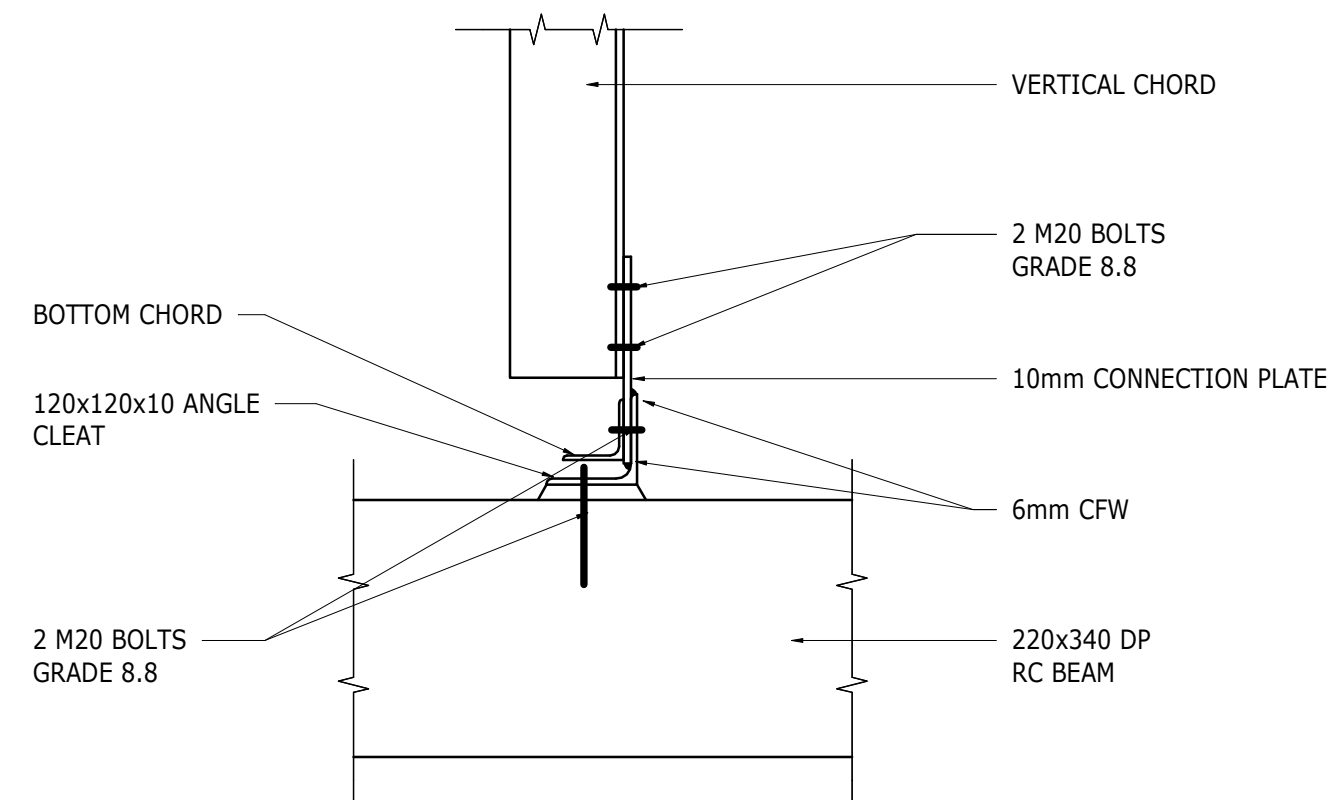


RING BEAM LAYOUT
SCALE 1 : 100



TYPICAL RING BEAM CONNECTION
SCALE 1 : 10

REVISION SCHEDULE				
REV	DATE	DESCRIPTION	ISSUED BY	APPR BY
0	20-10-23	ISSUED FOR TENDER	AAF	RT

- NOTES:
- ALL DRAWINGS TO BE READ IN CONJUNCTION WITH THE ARCHITECT DRAWINGS
 - ALL FOUNDATION EXCAVATION TO BE INSPECTED AND APPROVED BY ENGINEER BEFORE FIXING STEEL REINFORCEMENT OR CASTING CONCRETE. WHERE SUITABLE FOUNDING MATERIAL IS NOT ENCOUNTERED AT THE DEPTH SHOWN ON THE FOUNDATION DRAWINGS, EXCAVATION IS TO PROCEED TO A DEPTH AS APPROVED BY THE ENGINEER ON SITE.
 - STRIP OR PAD FOOTING TO BE CAST AT A DEPTH MINIMUM 600mm DEEP. BELOW THIS LEVEL, CONSTRUCT A SOIL MATRESS COMPACTED IN 6X150 LAYERS OF G7 TO 93% MOD AASHTO AT OMC.
 - BELOW SURFACE BED: INSITU SOIL TO RIP AND COMPACT, THEN 2 LAYERS IN 150mm MAXIMUM COMPACTED TO 95% MODIFIED AASHTO DENSITY AT OMC.
 - CONCRETE MIXES:
 - BLINDING 15/19
 - FOUNDATIONS 20/19
 - RC PAD FOOTING, SURFACE BED 25/19
 - BEAMS AND COLUMNS 30/19
 - BEARING PRESSURE ON SOIL MATRESS = 100kPa
 - SCHOOL FOUNDATION PRESSURE = 44.25 KN/m²
 - HALL FOUNDATION PRESSURE = 76.21 KN/m²
 - SUPERIMPOSED LOADS:
 - LIVE ON UNACCESSIBLE ROOF = 0.25kN/m²
 - WIND SPEED = 28 m/s
 - WIND PRESSURE = 447.29 N/m²

CLIENT



CONSULTANT



Gauteng Office (Head Office)
GladAfrica House, Hertford Office Park
90 Bekker Road, Vorna Valley, Midrand, 1686
P.O. Box 6723 Halfway House 1685
Tel. +27 11 312 2537/2584
Fax +27 11 805 1905
www.gladafrika.com

	NAME	REG. NO.	SIGNATURE
DRAWN	A FORLEY	N/A	N/A
DESIGNED	J. MODISE	201470233	

PROJECT DESCRIPTION
TROMPSBURG SPECIAL
NEEDS SCHOOL.

DRAWING TITLE
DINING HALL
RING BEAM LAYOUT AND DETAILS

STATUS LEGEND		SHEET SIZE
I	= INFORMATION	A0
CV	= CONCEPT AND VIABILITY	SCALE
D	= DESIGN DEVELOPMENT	As indicated
T	= TENDER	
C	= CONSTRUCTION	
AS	= AS BUILT	

DISCIPLINE	PROJECT NUMBER	STATUS	REVISION
STRUCTURAL	CE00092-ST-DH-110	T	0

TENDER