

1. APPENDIX A – SCHEDULE A AND B

1.1 GROUP 1

1.1.1 Pipe couplings

Material Number 0000659		
TENDERER TO PLEASE COMPLETE SCHEDULE B		
Criteria	Requirement (Schedule A)	Schedule B
Application	Pipe	
Connection type	FPT	
Size	15 mm	
Style	Socket	
Material Specifications		
Material	Mild Steel, Galvanized	

Material Number 0000660		
TENDERER TO PLEASE COMPLETE SCHEDULE B		
Criteria	Requirement (Schedule A)	Schedule B
Application	Pipe	
Connection type	FPT	
Size	20 mm	
Length	33 mm	
Style	Socket	
Material Specifications		
Material	Mild Steel, Galvanized	
Specification	SABS 763	

Material Number 0000661		
TENDERER TO PLEASE COMPLETE SCHEDULE B		
Criteria	Requirement (Schedule A)	Schedule B
Application	Pipe	
Connection type	FPT	
Style	Socket	
Material Specifications		
Material	Mild Steel, Galvanized	
Specification	SABS 509-1955 Table13	

CONTROLLED DISCLOSURE

When downloaded from the EDMS, this document is uncontrolled and the responsibility rests with the user to ensure it is in line with the authorised version on the system.

Material Number 0057300		
TENDERER TO PLEASE COMPLETE SCHEDULE B		
Criteria	Requirement (Schedule A)	Schedule B
Application	Pipe	
Connection type	THD	
Size	32 mm	
Style	Socket	
Material Specifications		
Material	Galvanise	

Material Number 0057124		
TENDERER TO PLEASE COMPLETE SCHEDULE B		
Criteria	Requirement (Schedule A)	Schedule B
Application	Pipe	
Connection type	FPT	
Size	6 mm	
Style	Socket; for steam pipe, plain, to the latest edition of bearing the sabs mark	
Material Specifications		
Material	Steel	
Specification	SABS 62	

Material Number 0057125		
TENDERER TO PLEASE COMPLETE SCHEDULE B		
Criteria	Requirement (Schedule A)	Schedule B
Application	Pipe	
Connection type	FPT	
Size	8 mm	
Style	Socket; Grade 4.6, steam pipe	
Material Specifications		
Material	Steel	
Specification	SABS 62	

CONTROLLED DISCLOSURE

When downloaded from the EDMS, this document is uncontrolled and the responsibility rests with the user to ensure it is in line with the authorised version on the system.

Material Number 0057126		
TENDERER TO PLEASE COMPLETE SCHEDULE B		
Criteria	Requirement (Schedule A)	Schedule B
Application	Pipe	
Connection type	FPT	
Size	10 mm	
Style	Socket; Grade 4.6, steam pipe	
Material Specifications		
Material	Steel	
Specification	SABS 62	

Material Number 0057127		
TENDERER TO PLEASE COMPLETE SCHEDULE B		
Criteria	Requirement (Schedule A)	Schedule B
Application	Pipe	
Connection type	FPT	
Size	15 mm	
Style	Socket; Grade 4.6, steam pipe	
Material Specifications		
Material	Steel	
Specification	SABS 62	

Material Number 0057128		
TENDERER TO PLEASE COMPLETE SCHEDULE B		
Criteria	Requirement (Schedule A)	Schedule B
Application	Pipe	
Connection type	FPT	
Size	20 mm	
Style	Socket; Grade 4.6, steam pipe	
Material Specifications		
Material	Steel	
Specification	SABS 62	

Material Number 0057129		
TENDERER TO PLEASE COMPLETE SCHEDULE B		
Criteria	Requirement (Schedule A)	Schedule B
Application	Pipe	

CONTROLLED DISCLOSURE

When downloaded from the EDMS, this document is uncontrolled and the responsibility rests with the user to ensure it is in line with the authorised version on the system.

Connection type	FPT	
Size	25 mm	
Style	Socket; grade 4.6, steam pipe	
Material Specifications		
Material	Steel	
Specification	SABS 62	

Material Number 0057130		
TENDERER TO PLEASE COMPLETE SCHEDULE B		
Criteria	Requirement (Schedule A)	Schedule B
Application	Pipe	
Connection type	FPT	
Size	32 mm	
Style	Socket; grade 4.6, steam pipe	
Material Specifications		
Material	Steel	
Specification	SABS 62	

Material Number 0057131		
TENDERER TO PLEASE COMPLETE SCHEDULE B		
Criteria	Requirement (Schedule A)	Schedule B
Application	Pipe	
Connection type	FPT	
Size	40 mm	
Style	Socket; grade 4.6, steam pipe	
Material Specifications		
Material	Steel	
Specification	SABS 62	

Material Number 0057132		
TENDERER TO PLEASE COMPLETE SCHEDULE B		
Criteria	Requirement (Schedule A)	Schedule B
Application	Pipe	
Connection type	FPT	
Size	50 mm	
Style	Socket; grade 4.6, steam pipe	

CONTROLLED DISCLOSURE

When downloaded from the EDMS, this document is uncontrolled and the responsibility rests with the user to ensure it is in line with the authorised version on the system.

Material Specifications		
Material	Steel	
Specification	SABS 62	

Material Number 0057133		
TENDERER TO PLEASE COMPLETE SCHEDULE B		
Criteria	Requirement (Schedule A)	Schedule B
Application	Pipe	
Connection type	FPT	
Size	65 mm	
Style	Socket; grade 4.6, steam pipe	
Material Specifications		
Material	Steel	
Specification	SABS 62	

Material Number 0057134		
TENDERER TO PLEASE COMPLETE SCHEDULE B		
Criteria	Requirement (Schedule A)	Schedule B
Application	Pipe	
Connection type	FNPT	
Size	80 mm	
Style	Socket; grade 4.6, steam pipe	
Material Specifications		
Material	Steel	
Specification	SABS 62	

Material Number 0057135		
TENDERER TO PLEASE COMPLETE SCHEDULE B		
Criteria	Requirement (Schedule A)	Schedule B
Application	Pipe	
Connection type	FPT	
Size	100 mm	
Style	Socket; Grade 4.6, plain, steam pipe, to the latest edition of SABS 62 and bearing the SABS mark of approval	
Material Specifications		
Material	Steel	

CONTROLLED DISCLOSURE

When downloaded from the EDMS, this document is uncontrolled and the responsibility rests with the user to ensure it is in line with the authorised version on the system.

Specification	SABS 62	
---------------	---------	--

Material Number 0057136		
TENDERER TO PLEASE COMPLETE SCHEDULE B		
Criteria	Requirement (Schedule A)	Schedule B
Application	Pipe	
Connection type	FPT	
Size	125 mm	
Style	Socket; Grade 4.6, Steam pipe	
Material Specifications		
Material	Steel	
Specification	SABS 62	

Material Number 0057137		
TENDERER TO PLEASE COMPLETE SCHEDULE B		
Criteria	Requirement (Schedule A)	Schedule B
Application	Pipe	
Connection type	FNPT	
Size	150mm	
Style	Socket; Grade 4.6, Steam pipe	
Material Specifications		
Material	Steel	
Specification	SABS 62	

Material Number 0136271		
TENDERER TO PLEASE COMPLETE SCHEDULE B		
Criteria	Requirement (Schedule A)	Schedule B
Application	Pipe	
Connection type	Socket fusion	
Size	OD 91MM X ID 70MM X HT 60MM	
Description	For use with demin train cation regen collector	
Reference No.	48229013	
Material Specifications		
Material	Polypropylene	

CONTROLLED DISCLOSURE

When downloaded from the EDMS, this document is uncontrolled and the responsibility rests with the user to ensure it is in line with the authorised version on the system.

Material Number 0057086		
TENDERER TO PLEASE COMPLETE SCHEDULE B		
Criteria	Requirement (Schedule A)	Schedule B
Application	Pipe	
Type	Service, faster type ball, male	
Connection type	FNPT X quick disconnect	
Size	¾ inch	
Part No.	NS34GASM	
Material Specifications		
Material	Steel Cold drawn Plated	

Material Number 0057087		
TENDERER TO PLEASE COMPLETE SCHEDULE B		
Criteria	Requirement (Schedule A)	Schedule B
Application	Pipe	
Type	Service, faster type ball, male	
Connection type	FNPT X quick disconnect	
Size	¾ inch	
Part No.	NS34GASF	
Material Specifications		
Material	Steel Cold drawn Plated	

Material Number 0057092		
TENDERER TO PLEASE COMPLETE SCHEDULE B		
Criteria	Requirement (Schedule A)	Schedule B
Application	Pipe	
Type	Quick release	
Connection type	FNPT X quick disconnect	
Size	½ inch	
Part No.	NS12GASF	
Material Specifications		
Material	Steel Cold drawn Plated	

Material Number 0057093		
TENDERER TO PLEASE COMPLETE SCHEDULE B		
Criteria	Requirement (Schedule A)	Schedule B
Application	Pipe	

CONTROLLED DISCLOSURE

When downloaded from the EDMS, this document is uncontrolled and the responsibility rests with the user to ensure it is in line with the authorised version on the system.

Type	Quick release, Male End	
Connection type	FNPT X quick disconnect	
Size	½ inch	
Part No.	NS12GASM	
Material Specifications		
Material	Steel Cold drawn Plated	

Material Number 0037831		
TENDERER TO PLEASE COMPLETE SCHEDULE B		
Criteria	Requirement (Schedule A)	Schedule B
Application	-	
Type	Bulkhead	
Description	Connection 1: NPT; connection 2: FPT; size: sq 19.1mm; grease, inside Thread Dia: 9.15mm, Dia of the hole 8.75mm; used on volumetric coal feeders	
Outside Diameter	14 mm	
Length	37 mm	
Part No.	1A3-000382	
Material Specifications		
Material	Steel	

Material Number 0054811		
TENDERER TO PLEASE COMPLETE SCHEDULE B		
Criteria	Requirement (Schedule A)	Schedule B
Application	Pipe	
Connection type	FPT	
Size	12 mm	
Description	Injector suction	
Reference No.	P39238B	
Material Specifications		
Material	Nylon	

CONTROLLED DISCLOSURE

When downloaded from the EDMS, this document is uncontrolled and the responsibility rests with the user to ensure it is in line with the authorised version on the system.

Material Number 0061045		
TENDERER TO PLEASE COMPLETE SCHEDULE B		
Criteria	Requirement (Schedule A)	Schedule B
Application	Pipe	
Connection type	NPT	
Size	6 mm	
Description	For sodium monitor	
Part No.	8035-980	
Material Specifications		
Material	Nylon	

Material Number 0079046		
TENDERER TO PLEASE COMPLETE SCHEDULE B		
Criteria	Requirement (Schedule A)	Schedule B
Application	Pipe	
Type	Hydraulic	
Connection type	FNPT	
Size	10 mm	
Description	TAT-thrust on, K double flanged in engaged TAT and industrial button head nipples, swivel joint	
Reference No.	HF4063	
Material Specifications		
Material	Stainless Steel	

Material Number 0079047		
TENDERER TO PLEASE COMPLETE SCHEDULE B		
Criteria	Requirement (Schedule A)	Schedule B
Application	Pipe	
Type	Hydraulic	
Connection type	FNPT	
Size	10 mm	
Description	TAT-hook-on a double flanged in engaged TAT and industrial button head nipples	
Reference No.	HF4018	
Material Specifications		
Material	Stainless Steel	

CONTROLLED DISCLOSURE

When downloaded from the EDMS, this document is uncontrolled and the responsibility rests with the user to ensure it is in line with the authorised version on the system.

1.2 GROUP 2

1.2.1 Flexible drive

Material Number 0025155		
TENDERER TO PLEASE COMPLETE SCHEDULE B		
Criteria	Requirement (Schedule A)	Schedule B
Application	Shaft Half	
Type/Connection	Flexible drive	
Bore	85 mm	
Outside Diameter	260 mm	
Length	165 mm	
Part No.	250B	
Material Specifications		
Material	Steel	

Material Number 0025390		
TENDERER TO PLEASE COMPLETE SCHEDULE B		
Criteria	Requirement (Schedule A)	Schedule B
Application	Shaft half	
Type	Flexible drive	
Bore	60 mm	
Outside Diameter	221 mm	
Length	72 mm	
Description	Bush, used on the Vulcan Sinclair coupling type 20FSU	
Material Specifications		
Material	Steel	

Material Number 0025424		
TENDERER TO PLEASE COMPLETE SCHEDULE B		
Criteria	Requirement (Schedule A)	Schedule B
Application	Shaft Flexible	
Type	Gear	
Size	LG 68MM; OD 101MM	
Connection type	Friction	
Part No.	T4BD-7101104	
Material Specifications		
Material	Steel	

CONTROLLED DISCLOSURE

When downloaded from the EDMS, this document is uncontrolled and the responsibility rests with the user to ensure it is in line with the authorised version on the system.

Material Number 0025430		
TENDERER TO PLEASE COMPLETE SCHEDULE B		
Criteria	Requirement (Schedule A)	Schedule B
Application	Shaft Half	
Type	Flexible drive	
Bore	45 mm	
Outside Diameter	195 mm	
Length	117 mm	
Description	For use on the highspeed fluid coupling type 420CDR-R used on the ash dump stacking system	
Reference No.	7721115	
Material Specifications		
Material	Steel	

Material Number 0025678		
TENDERER TO PLEASE COMPLETE SCHEDULE B		
Criteria	Requirement (Schedule A)	Schedule B
Application	Shaft Half	
Type	Flexible drive	
Description	Pilot bored	
Bore	93 mm	
Outside Diameter	115 mm	
Length	125 mm	
Reference No.	1070 T10	
Material Specifications		
Material	Steel	

Material Number 0025450		
TENDERER TO PLEASE COMPLETE SCHEDULE B		
Criteria	Requirement (Schedule A)	Schedule B
Application	Shaft Half	
Type	Flexible drive	
Description	Splined, Hyd-drive, consist of machined nylon bush, used on hydraulic drive T7A to D, One side keyway and splines on other side	
Bore	80 mm	

CONTROLLED DISCLOSURE

When downloaded from the EDMS, this document is uncontrolled and the responsibility rests with the user to ensure it is in line with the authorised version on the system.

Outside Diameter	178 mm	
Length	180 mm	
Reference No.	MDC5	
Material Specifications		
Material		

Material Number 0025483		
TENDERER TO PLEASE COMPLETE SCHEDULE B		
Criteria	Requirement (Schedule A)	Schedule B
Application	Shaft Half	
Type	Flexible drive	
Description	Bored and keyed to A90L6 motor and K90 input shaft, used on gear motor type MOTX KA 120 KM A90L6 D15, used on ash handling plant	
Bore	24 mm	
Outside Diameter	43 mm	
Length	55 mm	
Reference No.	BWN43	
Material Specifications		
Material	Steel	

Material Number 0025551		
TENDERER TO PLEASE COMPLETE SCHEDULE B		
Criteria	Requirement (Schedule A)	Schedule B
Application	Shaft half	
Type	Flexible drive	
Description	For filter cartridge oil C60942; complete crofts perfect 2 3/16; used on condensate polishing plant; unbored	
Bore	30 mm	
Outside Diameter	55 mm	
Length	55 mm	
Material Specifications		
Material	Aluminium	

CONTROLLED DISCLOSURE

When downloaded from the EDMS, this document is uncontrolled and the responsibility rests with the user to ensure it is in line with the authorised version on the system.

Material Number 0025594		
TENDERER TO PLEASE COMPLETE SCHEDULE B		
Criteria	Requirement (Schedule A)	Schedule B
Application	Shaft Half	
Type	Flexible drive	
Description	Complete with sleeves	
Bore	22 mm	
Outside Diameter	55 mm	
Length	67 mm	
Material Specifications		
Material	Steel	

Material Number 0025734		
TENDERER TO PLEASE COMPLETE SCHEDULE B		
Criteria	Requirement (Schedule A)	Schedule B
Application	Shaft Half	
Type	Flexible drive	
Bore	Unbored	
Outside Diameter	82 mm	
Length	93 mm	
Description	Bowex; for bucket elevator pony drive; unbored	
Part No.	M38	
Material Specifications		
Material	Steel	

Material Number 0025745		
TENDERER TO PLEASE COMPLETE SCHEDULE B		
Criteria	Requirement (Schedule A)	Schedule B
Application	Shaft Half	
Type	Flexible drive	
Description	Used on draught group fans and air heater electrical lube oil pumps	
Bore	Unbored	
Outside Diameter	67 mm	
Length	60 mm	
Part No.	67	
Material Specifications		

CONTROLLED DISCLOSURE

When downloaded from the EDMS, this document is uncontrolled and the responsibility rests with the user to ensure it is in line with the authorised version on the system.

Material	Cast iron	
----------	-----------	--

Material Number 002578		
TENDERER TO PLEASE COMPLETE SCHEDULE B		
Criteria	Requirement (Schedule A)	Schedule B
Application	Shaft Half	
Type	Flexible drive	
Bore	Unbored	
Outside Diameter	685 mm	
Length	305 mm	
Description	Hubs, used on Falk coupling type 1210T	
Material Specifications		
Material	Steel	

Material Number 0025885		
TENDERER TO PLEASE COMPLETE SCHEDULE B		
Criteria	Requirement (Schedule A)	Schedule B
Application	Shaft Half	
Type	Flexible drive	
Description	For type Waldron powerline 2.5 in Kopflex, Pilot bore	
Bore	Unbored	
Outside Diameter	130 mm	
Length	77 mm	
Part No.	67	
Material Specifications		
Material	Steel	

Material Number 0026015		
TENDERER TO PLEASE COMPLETE SCHEDULE B		
Criteria	Requirement (Schedule A)	Schedule B
Application	Shaft half	
Type	Flexible drive	
Outside Diameter	176 mm	
Length	95 mm	
Description	Moving heads; used on the low speed; used on the ash handling plant	
Reference No.	75J20	

CONTROLLED DISCLOSURE

When downloaded from the EDMS, this document is uncontrolled and the responsibility rests with the user to ensure it is in line with the authorised version on the system.

Material Specifications		
Material	Steel	

Material Number 0026016		
TENDERER TO PLEASE COMPLETE SCHEDULE B		
Criteria	Requirement (Schedule A)	Schedule B
Application	Shaft Half	
Type	Flexible drive	
Description	Complete with tyre, flanges, hubs, bolts and taperlocks, to be packed as a set, outside diameter on the drive unit shaft 55mm	
Bore	42 mm	
Outside Diameter	185 mm	
Length	45 mm	
Part No.	F90	
Material Specifications		
Material	Cast iron	

Material Number 0026017		
TENDERER TO PLEASE COMPLETE SCHEDULE B		
Criteria	Requirement (Schedule A)	Schedule B
Application	Shaft Half	
Type	Flexible drive	
Description	Flexident Junior Hi-speed, overall height 103mm and 108mm, for horizontal mounting, used on ash plant	
Bore	42 mm	
Outside Diameter	108 mm	
Length	50 mm	
Reference No.	42J20	
Part No.		
Material Specifications		
Material	Steel	

CONTROLLED DISCLOSURE

When downloaded from the EDMS, this document is uncontrolled and the responsibility rests with the user to ensure it is in line with the authorised version on the system.

Material Number 0038343		
TENDERER TO PLEASE COMPLETE SCHEDULE B		
Criteria	Requirement (Schedule A)	Schedule B
Application	Shaft half	
Type	Flexible drive	
Bore	75 mm	
Outside Diameter	195 mm	
Length	135 mm	
Part No.	NORMEX194	
Material Specifications		
Material	Steel	

Material Number 0038347		
TENDERER TO PLEASE COMPLETE SCHEDULE B		
Criteria	Requirement (Schedule A)	Schedule B
Application	Shaft Half	
Type	Flexible drive	
Bore	100 mm	
Outside Diameter	265 mm	
Length	165 mm	
Part No.	GB240GG400-150ST	
Material Specifications		
Material	Steel	

Material Number 0038350		
TENDERER TO PLEASE COMPLETE SCHEDULE B		
Criteria	Requirement (Schedule A)	Schedule B
Application	Shaft Half	
Type	Flexible drive	
Bore	75 mm	
Outside Diameter	240 mm	
Length	143 mm	
Part No.	GB265GG-400-150GS	
Material Specifications		
Material	Steel	

CONTROLLED DISCLOSURE

When downloaded from the EDMS, this document is uncontrolled and the responsibility rests with the user to ensure it is in line with the authorised version on the system.

Material Number 0044476		
TENDERER TO PLEASE COMPLETE SCHEDULE B		
Criteria	Requirement (Schedule A)	Schedule B
Application	Shaft half	
Type	Flexible drive	
Description	Used on stator coolant pump	
Bore	60mm	
Outside Diameter	135 mm	
Length	225mm	
Part No.	86-00-081	
Material Specifications		
Material	Cast iron	

Material Number 0044509		
TENDERER TO PLEASE COMPLETE SCHEDULE B		
Criteria	Requirement (Schedule A)	Schedule B
Application	Shaft half	
Type	Flexible drive	
Description	Complete with taper locks for KSB pumps no KWPK type KWPK 65-200, type: Eupex N95	
Bore	32 mm	
Outside Diameter	110 mm	
Length	80 mm	
Part No.	HRC 110	
Material Specifications		
Material	Cast iron	

Material Number 0058424		
TENDERER TO PLEASE COMPLETE SCHEDULE B		
Criteria	Requirement (Schedule A)	Schedule B
Application	Shaft	
Type	Flexible drive	
Connection type	Complete with taper lock; pump shaft OD 32mm and motor shaft OD 42mm	
Bore	32 mm	
Reference No.	FXF60	
Material Specifications		
Material	Rubber	

CONTROLLED DISCLOSURE

When downloaded from the EDMS, this document is uncontrolled and the responsibility rests with the user to ensure it is in line with the authorised version on the system.

Material Number 0058548		
TENDERER TO PLEASE COMPLETE SCHEDULE B		
Criteria	Requirement (Schedule A)	Schedule B
Application	Shaft half	
Type	Flexible drive	
Description	Complete with neoprene spider	
Bore	18 mm	
Outside Diameter	55 mm	
Length	45 mm	
Reference No.	538574/80	
Material Specifications		
Material	Steel	

Material Number 0553371		
TENDERER TO PLEASE COMPLETE SCHEDULE B		
Criteria	Requirement (Schedule A)	Schedule B
Application	Shaft flexible	
Type	LP lube oil pump	
Bore	24 mm	
Description	Torque: 24.48 newton meter speed: 1430 rpm; length 88.5 mm; motor shaft 24 mm; keyway width 8 mm; coupling od 45 mm; pump size 17.36 mm (taper 1:8); keyway width 3.2 to 4 mm; for use on mill trunnion lube oil sets	
Part No.	COUGE242	
Material Specifications		
Material	Aluminium	

Material Number 0553373		
TENDERER TO PLEASE COMPLETE SCHEDULE B		
Criteria	Requirement (Schedule A)	Schedule B
Application	Shaft flexible	
Type	HP lube oil pump	
Bore	24 mm	
Description	Torque: 24.48 newton meter; material: al; speed: 1430 rpm; length 89.3 mm; motor shaft size 24 mm; keyway width 8 mm; coupling od 45 mm;	

CONTROLLED DISCLOSURE

When downloaded from the EDMS, this document is uncontrolled and the responsibility rests with the user to ensure it is in line with the authorised version on the system.

	pump half coupling size 9.7 mm (taper 1:8); keyway width 2.4 mm; for use on mill trunnion lube oil shaft	
Part No.	COUGE241	
Material Specifications		
Material	Aluminium	

Material Number 0553374		
TENDERER TO PLEASE COMPLETE SCHEDULE B		
Criteria	Requirement (Schedule A)	Schedule B
Application	Shaft flexible	
Type	Lube oil pump	
Bore	11/24 mm	
Connection type	Torque: 2448 newton meter; material: rubber; speed: 1430 rpm; lube oil and jacking oil pump coupling spider; rubber insert WD 16 x od 45 mm; for use on mill trunnion lube oil sets	
Part No.	COU-R1-S04	
Material Specifications		
Material	Aluminium	

Material Number 0097538		
TENDERER TO PLEASE COMPLETE SCHEDULE B		
Criteria	Requirement (Schedule A)	Schedule B
Application	Shaft	
Type	Flexible drive	
Connection type	FNPT	
Bore	55 mm	
Outside Diameter	100 mm	
Length	20 mm	
Description	Elastic plate, used on the oil separator purifier type MAB204S	
Part No.	519532-01	
Material Specifications		
Material	Rubber	

CONTROLLED DISCLOSURE

When downloaded from the EDMS, this document is uncontrolled and the responsibility rests with the user to ensure it is in line with the authorised version on the system.

Material Number 0658082		
TENDERER TO PLEASE COMPLETE SCHEDULE B		
Criteria	Requirement (Schedule A)	Schedule B
Type	HRC	
Size	130 MM	
Connection type	Connection 1: pump shaft; Connection 1 size: 42 mm; Connection 2: motor shaft; Connection 2 size: 55 mm; Connection 1: H flange coupling with 1610 taper bush for 42mm shaft; connection 2: B flange connection; keyway size according to BS 4235; Rubber	
Material Specifications		
Material	GG25 grey cast iron	

Material Number 0247287		
TENDERER TO PLEASE COMPLETE SCHEDULE B		
Criteria	Requirement (Schedule A)	Schedule B
Application	Shaft	
Type	Turbo soft start	
Bore	100 x 80 mm	
Outside Diameter	761 mm	
Connection type	Connection 1: key slot 28 x 16 mm; connection 2: key slot 22 x 14 mm	
Part No.	V650 TSS	

Material Number 0059084		
TENDERER TO PLEASE COMPLETE SCHEDULE B		
Criteria	Requirement (Schedule A)	Schedule B
Application	Shaft half	
Type	Drive	
Description	Used on the electric motor/pump type rotex 110kW on the variable speed on the CSY surge bin transfer conveyors	
Bore	80 mm	
Outside Diameter	155 mm	
Length	215 mm	

CONTROLLED DISCLOSURE

When downloaded from the EDMS, this document is uncontrolled and the responsibility rests with the user to ensure it is in line with the authorised version on the system.

Material Specifications		
Material	Steel	

Material Number 0050841		
TENDERER TO PLEASE COMPLETE SCHEDULE B		
Criteria	Requirement (Schedule A)	Schedule B
Application	Shaft half	
Type	POL 4	
Description	Sleeve material: polyamide 6.6; pump half bore: 20.04mm; key width 6mm; grub screw: 5mm; motor half bore: 28.04mm; key width 8mm; grub screw: 6mm; for use on Hawe high pressure radial piston pump type r1.2-2-1.2; used on the ID and FD fans and radial piston pump type r1.2-1.2-1.2	
Bore	20.04 mm	
Outside Diameter	69 mm	
Length	33 mm	
Material Specifications		
Material	Steel	

Material Number 0025403		
TENDERER TO PLEASE COMPLETE SCHEDULE B		
Criteria	Requirement (Schedule A)	Schedule B
Application	Water plant	
Size	LG 35 X HT 35 MM	
Connection type	Water plant	
Reference No.	59	
Part No.	P84683	
Material Specifications		
Material	Steel	

1.2.2 Rigid drive

Material Number 0025355		
TENDERER TO PLEASE COMPLETE SCHEDULE B		
Criteria	Requirement (Schedule A)	Schedule B
Application	Shaft	
Type / Connection	Rigid drive	

CONTROLLED DISCLOSURE

When downloaded from the EDMS, this document is uncontrolled and the responsibility rests with the user to ensure it is in line with the authorised version on the system.

Bore	50 mm	
Outside Diameter	420 mm	
Length	210 mm	
Part No.	14-5FCU	
Material Specifications		
Material	Aluminium Cast	

Material Number 0025387		
TENDERER TO PLEASE COMPLETE SCHEDULE B		
Criteria	Requirement (Schedule A)	Schedule B
Application	Shaft	
Type / Connection	Rigid drive	
Bore	27 mm	
Outside Diameter	200 mm	
Length	100 mm	
Description	Boss for 20SCR 25W	
Reference No.	55648F	
Material Specifications		
Material	Steel	

Material Number 0025391		
TENDERER TO PLEASE COMPLETE SCHEDULE B		
Criteria	Requirement (Schedule A)	Schedule B
Application	Shaft	
Type	Rigid	
Bore	30 mm	
Outside Diameter	240 mm	
Length	130 mm	
Description	Spider plate boss, used on Vulcan Sinclair coupling size 23SCR, complete with boring and keying	
Part No.	1FS190007	
Material Specifications		
Material	Steel	

CONTROLLED DISCLOSURE

When downloaded from the EDMS, this document is uncontrolled and the responsibility rests with the user to ensure it is in line with the authorised version on the system.

Material Number 0025392		
TENDERER TO PLEASE COMPLETE SCHEDULE B		
Criteria	Requirement (Schedule A)	Schedule B
Application	Shaft	
Type	Rigid	
Bore	26 mm	
Outside Diameter	197 mm	
Length	100 mm	
Description	Spider plate boss, and keying	
Part No.	20SCR	
Material Specifications		
Material	Steel	

Material Number 0025401		
TENDERER TO PLEASE COMPLETE SCHEDULE B		
Criteria	Requirement (Schedule A)	Schedule B
Application	Shaft Half	
Type	Rigid drive	
Bore	50 mm	
Outside Diameter	200 mm	
Length	110 mm	
Connection type	Used on the condensate extraction pump	
Part No.	21751P3	
Material Specifications		
Material	Steel	

Material Number 0025445		
TENDERER TO PLEASE COMPLETE SCHEDULE B		
Criteria	Requirement (Schedule A)	Schedule B
Application	Shaft Half	
Type	Rigid drive	
Bore	45 mm	
Outside Diameter	280 mm	
Length	220 mm	
Description	Gear type; comprising of 1 X 1/2 CPLG MAINA M90-05-4-01 AND 1 X spacer for G0-5A (RAZ 125), pilot bored	

CONTROLLED DISCLOSURE

When downloaded from the EDMS, this document is uncontrolled and the responsibility rests with the user to ensure it is in line with the authorised version on the system.

Part No.	RAZ 125	
Material Specifications		
Material	Steel	
Material Number 0025497		
TENDERER TO PLEASE COMPLETE SCHEDULE B		
Criteria	Requirement (Schedule A)	Schedule B
Application	Shaft	
Type	Rigid drive	
Description	For speed governor drive	
Bore	180 mm	
Outside Diameter	730 mm	
Length	570 mm	
Reference No.	20VB10D005; 20VB20D005; T20/B10D002/2	
Material Specifications		
Material	Steel	

Material Number 0025509		
TENDERER TO PLEASE COMPLETE SCHEDULE B		
Criteria	Requirement (Schedule A)	Schedule B
Application	Shaft Half	
Type	Rigid	
Description	Gear for Waldron power line 4p, consisting of drive hub, driven hub and molly fitted splined sleeve	
Bore	45 mm	
Outside Diameter	305 mm	
Length	260 mm	
Material Specifications		
Material	Nylon, Non-conductive	

Material Number 0025705		
TENDERER TO PLEASE COMPLETE SCHEDULE B		
Criteria	Requirement (Schedule A)	Schedule B
Application	Shaft Half	
Type	Rigid drive	
Description	Torque limiter with switch ring, used between Hansen gearbox and motor	
Bore	Pilot bore	
Outside Diameter	190 mm	

CONTROLLED DISCLOSURE

When downloaded from the EDMS, this document is uncontrolled and the responsibility rests with the user to ensure it is in line with the authorised version on the system.

Length	250 mm	
Part No.	1000APC3401-2	
Material Specifications		
Material	Steel	

Material Number 0025706		
TENDERER TO PLEASE COMPLETE SCHEDULE B		
Criteria	Requirement (Schedule A)	Schedule B
Application	Shaft Half	
Type	Rigid drive	
Description	Torque limiter (100af); used on Hansen transmissions; main equipment mill pa isolating dampers	
Bore	Unbored	
Outside Diameter	140 mm	
Length	130 mm	
Part No.	100APC-Z6051/1	
Material Specifications		
Material	Steel	

Material Number 0025706		
TENDERER TO PLEASE COMPLETE SCHEDULE B		
Criteria	Requirement (Schedule A)	Schedule B
Application	Shaft Half	
Type	Rigid drive	
Description	Torque limiter (100af); used on Hansen transmissions; main equipment mill pa isolating dampers	
Bore	Unbored	
Outside Diameter	140 mm	
Length	130 mm	
Part No.	100APC-Z6051/1	
Material Specifications		
Material	Steel	

CONTROLLED DISCLOSURE

When downloaded from the EDMS, this document is uncontrolled and the responsibility rests with the user to ensure it is in line with the authorised version on the system.

Material Number 002573		
TENDERER TO PLEASE COMPLETE SCHEDULE B		
Criteria	Requirement (Schedule A)	Schedule B
Application	Shaft Half	
Type	Rigid drive	
Bore	38 mm	
Outside Diameter	300mm	
Length	185 mm	
Description	For torque limit clutch, bore which fits on LR132, adaptor housing size 30mm bore, torque limit clutch coupling which fits on motor shaft size 38mm bore, for 400 series conveyors; Model no: LR132	
Part No.	106710X	
Material Specifications		
Material	Cast Iron	

Material Number 0025828		
TENDERER TO PLEASE COMPLETE SCHEDULE B		
Criteria	Requirement (Schedule A)	Schedule B
Application	Shaft Half	
Type	Rigid drive	
Bore	Unbored	
Outside Diameter	90 mm	
Length	125 mm	
Description	Torque limiter, type ACR, used on the Hansen transmission	
Part No.	100AB	
Material Specifications		
Material	Steel	

Material Number 0037796		
TENDERER TO PLEASE COMPLETE SCHEDULE B		
Criteria	Requirement (Schedule A)	Schedule B
Application	Shaft Half	
Type	Rigid	
Description	Drive shaft to belt pulley	

CONTROLLED DISCLOSURE

When downloaded from the EDMS, this document is uncontrolled and the responsibility rests with the user to ensure it is in line with the authorised version on the system.

Bore	50 mm	
Outside Diameter	220 mm	
Length	40 mm	
Part No.	1-A2-000255	
Material Specifications		
Material	Cast iron	

Material Number 0037805		
TENDERER TO PLEASE COMPLETE SCHEDULE B		
Criteria	Requirement (Schedule A)	Schedule B
Application	Shaft Half	
Type	Rigid	
Description	From reducer shaft side, used on the clean-out conveyor drive group on the raw coal feeder	
Bore	35 mm	
Outside Diameter	145 mm	
Length	50 mm	
Part No.	1A3-000035	
Material Specifications		
Material	Steel	

Material Number 0037806		
TENDERER TO PLEASE COMPLETE SCHEDULE B		
Criteria	Requirement (Schedule A)	Schedule B
Application	Shaft Half	
Type	Rigid	
Description	Sprocket shaft side, for use on the clean out conveyor drive group on the raw coal feeder	
Bore	42 mm	
Outside Diameter	145 mm	
Length	45mm	
Part No.	1A3-000036	
Material Specifications		
Material	Steel	

CONTROLLED DISCLOSURE

When downloaded from the EDMS, this document is uncontrolled and the responsibility rests with the user to ensure it is in line with the authorised version on the system.

Material Number 0043364		
TENDERER TO PLEASE COMPLETE SCHEDULE B		
Criteria	Requirement (Schedule A)	Schedule B
Application	Shaft half	
Type	Rigid drive	
Description	Rotating element cast number 3-728	
Bore	210mm	
Outside Diameter	410 mm	
Length	265 mm	
Reference No.	C6475	
Material Specifications		
Material	Steel	
Material Number 0050840		
TENDERER TO PLEASE COMPLETE SCHEDULE B		
Criteria	Requirement (Schedule A)	Schedule B
Application	Shaft	
Type	Rigid drive	
Description	Series 1140 for use on Varley shaft pump for air heaters and draught groups on boilers	
Bore	22 mm	
Outside Diameter	86 mm	
Length	300 mm	
Material Specifications		
Material	Cast iron	

Material Number 0050840		
TENDERER TO PLEASE COMPLETE SCHEDULE B		
Criteria	Requirement (Schedule A)	Schedule B
Application	Shaft	
Type	Rigid drive	
Description	Series 1140 for use on Varley shaft pump for air heaters and draught groups on boilers	
Bore	22 mm	
Outside Diameter	86 mm	
Length	300 mm	
Material Specifications		
Material	Cast iron	

CONTROLLED DISCLOSURE

When downloaded from the EDMS, this document is uncontrolled and the responsibility rests with the user to ensure it is in line with the authorised version on the system.

1.2.3 Resilient grid

Material Number 0025750		
TENDERER TO PLEASE COMPLETE SCHEDULE B		
Criteria	Requirement (Schedule A)	Schedule B
Application	Shaft Half	
Type	Hub (Grid coupling)	
Bore	239.99 X 220.05 MM	
Outside Diameter	445 mm	
Length	220 mm	
Description	Consist of one half (gearbox site) 220.05mm; one half (pulley site) 239.99; keyway: 50mm wide; 13mm depth/height; Additions: grid springs STH2170 GSK; grid horizontal cover STH2170 CC; used with Falk Steelflex coupling type 170T	
Part No.	1170T	
Material Specifications		
Material	Steel	

Material Number 0025860		
TENDERER TO PLEASE COMPLETE SCHEDULE B		
Criteria	Requirement (Schedule A)	Schedule B
Application	Shaft Half	
Type	Resilient grid	
Bore	25 mm	
Outside Diameter	115 mm	
Length	128 mm	
Description	Length half: 64mm; clear diameter with cover: 210; teeth 48, hub without spring	
Part No.	152 TYPE A	
Material Specifications		
Material	Steel	

Material Number 0585644		
TENDERER TO PLEASE COMPLETE SCHEDULE B		
Criteria	Requirement (Schedule A)	Schedule B
Type	Grid spring resilient	

CONTROLLED DISCLOSURE

When downloaded from the EDMS, this document is uncontrolled and the responsibility rests with the user to ensure it is in line with the authorised version on the system.

Size	OD 533.4 X LG 622.6 MM	
Description	Connection 1: keyway; connection 2: keyway; on the sizes part this includes a 13 mm gap; with key	
Drawing No	23.63/57089 See Appendix B	
Material Specifications		
Material	EN9 NORMINALIZED	

Material Number 0585645		
TENDERER TO PLEASE COMPLETE SCHEDULE B		
Criteria	Requirement (Schedule A)	Schedule B
Type	Grid spring resilient	
Size	OD 355.6 X LG 437.8 MM	
Description	Connection 1: keyway; connection 2: keyway; on the sizes this includes a 6 mm gap; with key;	
Drawing No	23.63/57090 See Appendix B	
Material Specifications		
Material	EN9 NORMINALIZED	

Material Number 0604384		
TENDERER TO PLEASE COMPLETE SCHEDULE B		
Criteria	Requirement (Schedule A)	Schedule B
Type	ID fan	
Size	DIA 368 X WD 215 MM	
Description	634 FK LEF coupling; Power: 113200 Nm; max speed: 900 rpm; Max bore: 260 mm; Pilot bore: 140 mm; Diameter with coupling cover 876 mm; material hubs: Unalloyed medium carbon steel; material covers: pressed steel or cast steel; Material grid springs: Springs steel draw bar;	
Material Specifications		
Material	EN8080 M40	

CONTROLLED DISCLOSURE

When downloaded from the EDMS, this document is uncontrolled and the responsibility rests with the user to ensure it is in line with the authorised version on the system.

Material Number 0604448		
TENDERER TO PLEASE COMPLETE SCHEDULE B		
Criteria	Requirement (Schedule A)	Schedule B
Type	Grid spring resilient	
Size	DIA 115 X WD 85 MM	
Description	152 Type A; power: 783Nm; max speed: 2750rpm; Max bore: 80 mm; Pilot bore: 25 mm; Material hubs: Unalloyed medium carbon steel; Material covers: Pressed steel or cast steel; Material grind springs: Springs steel draw bar; Diameter of the cover 210 mm	
Material Specifications		
Material	EN8080 M40	

Material Number 0633248		
TENDERER TO PLEASE COMPLETE SCHEDULE B		
Criteria	Requirement (Schedule A)	Schedule B
Type	Grid	
Size	110 MM	
Description	Connection 1: Pilot bore; Connection 2: Pilot bore; Winflex 5T complete; 2 x half covers; 2 x seals; 2 x hubs; gasket; spring; bolts and screw; Rough bore: 30 mm; Diameter of cover: 265 mm; Diameter of hub: 146 mm	
Material Specifications		
Material	Steel	

1.2.4 Tooth rim

Material Number 0027427		
TENDERER TO PLEASE COMPLETE SCHEDULE B		
Criteria	Requirement (Schedule A)	Schedule B
Application		
Type	Tooth rim	
Description	The following is required with every delivery; Shelf life; date of manufacture and method of storage	
Size	ID 26 X OD 54 X HT 14 MM	

CONTROLLED DISCLOSURE

When downloaded from the EDMS, this document is uncontrolled and the responsibility rests with the user to ensure it is in line with the authorised version on the system.

Part No.	538574-02	
Material Specifications		
Material	Rubber	

1.2.5 Magnetic

Material Number 0038361		
TENDERER TO PLEASE COMPLETE SCHEDULE B		
Criteria	Requirement (Schedule A)	Schedule B
Application	For use on ash plant	
Type	Magnetic	
Connection type	Type C	
Size	DIA 222 X WD 200 MM	
Part No.	120T21-274	
Material Specifications		
Material	Steel	

1.2.6 Turboflex

Material Number 0025930		
TENDERER TO PLEASE COMPLETE SCHEDULE B		
Criteria	Requirement (Schedule A)	Schedule B
Application	Shaft	
Type	Turboflex	
Bore	Pilot	
Outside Diameter	310 mm	
Length	76 mm	
Description	To be supplied as complete coupling	
Part No.	X-2 ; FX120	
Material Specifications		
Material	Steel	

Material Number 0038633		
TENDERER TO PLEASE COMPLETE SCHEDULE B		
Criteria	Requirement (Schedule A)	Schedule B
Application	Shaft Flexible	
Type	Turboflex	
Size	OD 308MM X WD 95MM	
Bore	202 MM	

CONTROLLED DISCLOSURE

When downloaded from the EDMS, this document is uncontrolled and the responsibility rests with the user to ensure it is in line with the authorised version on the system.

Reference No.	260BTW GB and F120	
Material Specifications		
Material	Rubber	

Material Number 0175851		
TENDERER TO PLEASE COMPLETE SCHEDULE B		
Criteria	Requirement (Schedule A)	Schedule B
Application	Shaft	
Type	Turboflex	
Bore	98 mm	
Outside Diameter	300 mm	
Length	310 mm	
Description	Rating 2205kW at 1470rpm, coupling must be dynamically balanced, to be bored and keyway, non-insulated	
Part No.	HBS2000-8/1-RH	
Material Specifications		
Material	Steel	

1.2.7 Winflex

Material Number 0041375		
TENDERER TO PLEASE COMPLETE SCHEDULE B		
Criteria	Requirement (Schedule A)	Schedule B
Application	Shaft half	
Type	Low speed flexible drive	
Description	Hub, for Winflex low speed coupling type 43T, complete but without the spring	
Bore	220 mm	
Outside Diameter	510 mm	
Length	180 mm	
Part No.	43T	
Material Specifications		
Material	Steel	

Material Number 0041450		
TENDERER TO PLEASE COMPLETE SCHEDULE B		
Criteria	Requirement (Schedule A)	Schedule B
Application	Shaft half	

CONTROLLED DISCLOSURE

When downloaded from the EDMS, this document is uncontrolled and the responsibility rests with the user to ensure it is in line with the authorised version on the system.

Type	Flexible drive	
Description	Winflex short hub, for Winflex low speed coupling Type 5t	
Bore	Unbored	
Outside Diameter	202mm	
Length	110 mm	
Part No.	00WE92	
Material Specifications		
Material	Steel	

Material Number 0041450		
TENDERER TO PLEASE COMPLETE SCHEDULE B		
Criteria	Requirement (Schedule A)	Schedule B
Application	Shaft half	
Type	Flexible drive	
Description	Winflex short hub, for Winflex low speed coupling Type 5t	
Bore	Unbored	
Outside Diameter	202mm	
Length	110 mm	
Part No.	00WE92	
Material Specifications		
Material	Steel	

Material Number 0041372		
TENDERER TO PLEASE COMPLETE SCHEDULE B		
Criteria	Requirement (Schedule A)	Schedule B
Application	Shaft	
Type	Low speed drive	
Description	2 hubs with dust covers and spring; Winflex	
Outside Diameter	105 mm	
Length	60mm	
Part No.	00T	
Material Specifications		
Material	Steel	

CONTROLLED DISCLOSURE

When downloaded from the EDMS, this document is uncontrolled and the responsibility rests with the user to ensure it is in line with the authorised version on the system.

Material Number 0041402		
TENDERER TO PLEASE COMPLETE SCHEDULE B		
Criteria	Requirement (Schedule A)	Schedule B
Application	Shaft	
Type	Winflex	
Description	1 coupling = 2 halves, low speed hub	
Bore	180 mm	
Outside Diameter	415 mm	
Length	155 mm	
Part No.	28 T	
Material Specifications		
Material	Steel	

1.2.8 Torque limit clutch

Material Number 002572		
TENDERER TO PLEASE COMPLETE SCHEDULE B		
Criteria	Requirement (Schedule A)	Schedule B
Application	Shaft Half	
Type	Torque Limit Clutch	
Bore	28 mm	
Outside Diameter	200mm	
Length	170 mm	
Description	Bore which fits on LR100-adaptor housing size 24mm bore size. Torque limit coupling which fits on motor shaft size 28mm bore size, for 300 series conveyor; Reference no: MR-5-13NM; Part No LR100/11Z	
Part No.	1067680	
Material Specifications		
Material	Cast Iron	

CONTROLLED DISCLOSURE

When downloaded from the EDMS, this document is uncontrolled and the responsibility rests with the user to ensure it is in line with the authorised version on the system.

1.3 GROUP 3

1.3.1 Trans fluid

Material Number 0018722		
TENDERER TO PLEASE COMPLETE SCHEDULE B		
Criteria	Requirement (Schedule A)	Schedule B
Application	Shaft Half	
Type/Connection	Trans fluid	
Bore	80 mm	
Outside Diameter	525 mm	
Length	430 mm	
Part No.	17KRG ; X1234 ;4321X	
Material Specifications		
Material	Aluminium Cast	

1.3.2 Fluid drive

Material Number 0025394		
TENDERER TO PLEASE COMPLETE SCHEDULE B		
Criteria	Requirement (Schedule A)	Schedule B
Application	Shaft Half	
Type	Fluid drive	
Reference No.	20FCU	

Material Number 0026013		
TENDERER TO PLEASE COMPLETE SCHEDULE B		
Criteria	Requirement (Schedule A)	Schedule B
Application	Shaft half	
Type	Fluid drive	
Bore	140mm	
Outside Diameter	565 mm	
Length	360 mm	
Description	DFC (Disk Flexible Coupling)	
Reference No.	487TV	
Material Specifications		
Material	Aluminium	

CONTROLLED DISCLOSURE

When downloaded from the EDMS, this document is uncontrolled and the responsibility rests with the user to ensure it is in line with the authorised version on the system.

Material Number 0176972		
TENDERER TO PLEASE COMPLETE SCHEDULE B		
Criteria	Requirement (Schedule A)	Schedule B
Type	Fluid drive	
Outside Diameter	160 mm	
Reference No.	562TVB	
Material Specifications		
Material	Aluminium	

Material Number 0217314		
TENDERER TO PLEASE COMPLETE SCHEDULE B		
Criteria	Requirement (Schedule A)	Schedule B
Application	Shaft half	
Type	Fluid drive	
Outside Diameter	190 mm	
Length	50 mm	
Description	Driven output; pilot bore; used on bucket elevators;	
Part No.	Model no: FCU 16.25	
Material Specifications		
Material	Aluminium	

Material Number 0217315		
TENDERER TO PLEASE COMPLETE SCHEDULE B		
Criteria	Requirement (Schedule A)	Schedule B
Application	Shaft half	
Type	Fluid drive /Driving boss	
Bore	Pilot bore	
Outside Diameter	190 mm	
Length	50 mm	
Description	Used on bucket elevators	
Part No.	Model no: FCU 16.25	
Material Specifications		
Material	Aluminium	

CONTROLLED DISCLOSURE

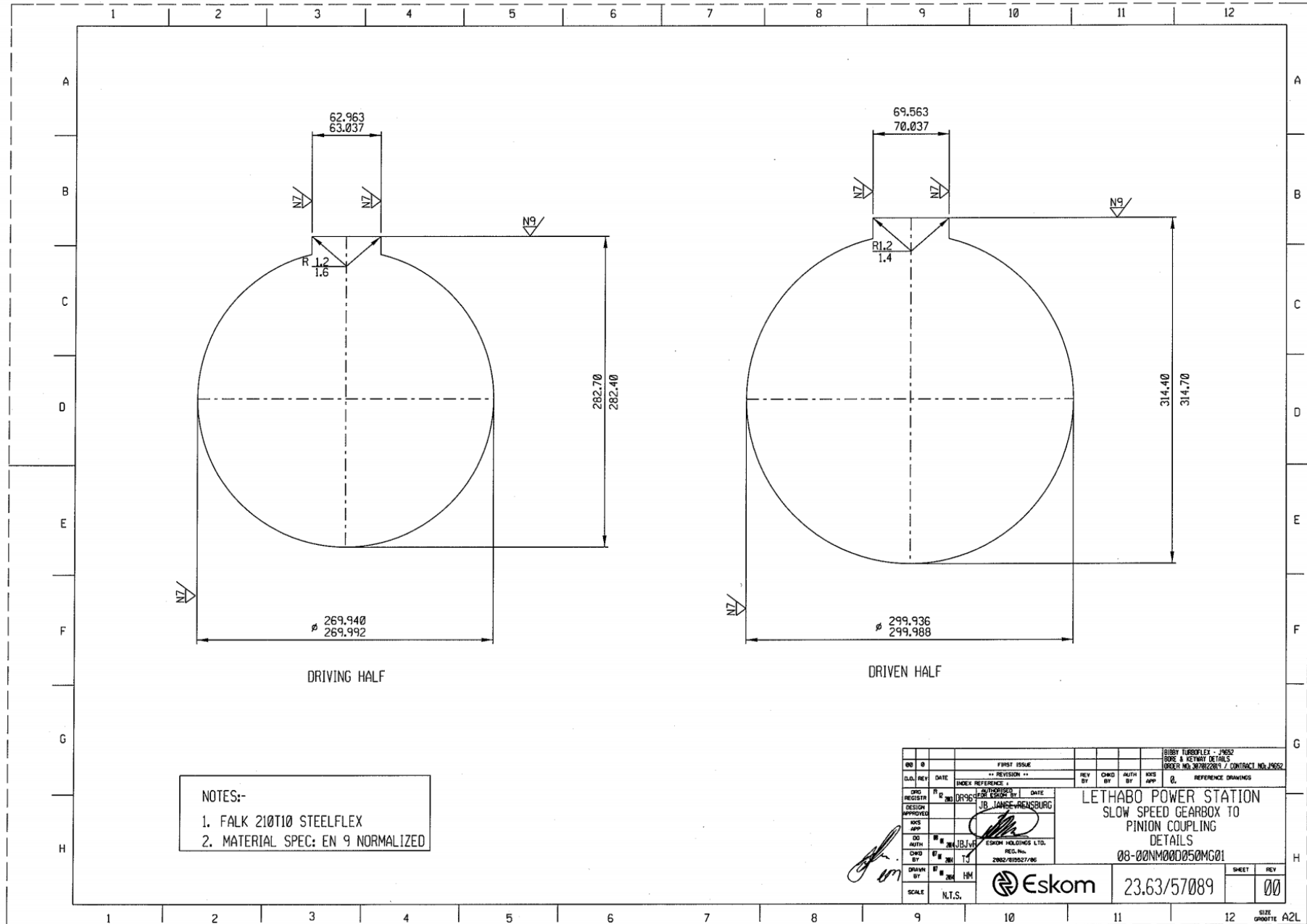
When downloaded from the EDMS, this document is uncontrolled and the responsibility rests with the user to ensure it is in line with the authorised version on the system.

CONTROLLED DISCLOSURE

When downloaded from the EDMS, this document is uncontrolled and the responsibility rests with the user to ensure it is in line with the authorised version on the system.

Appendix B- Drawings

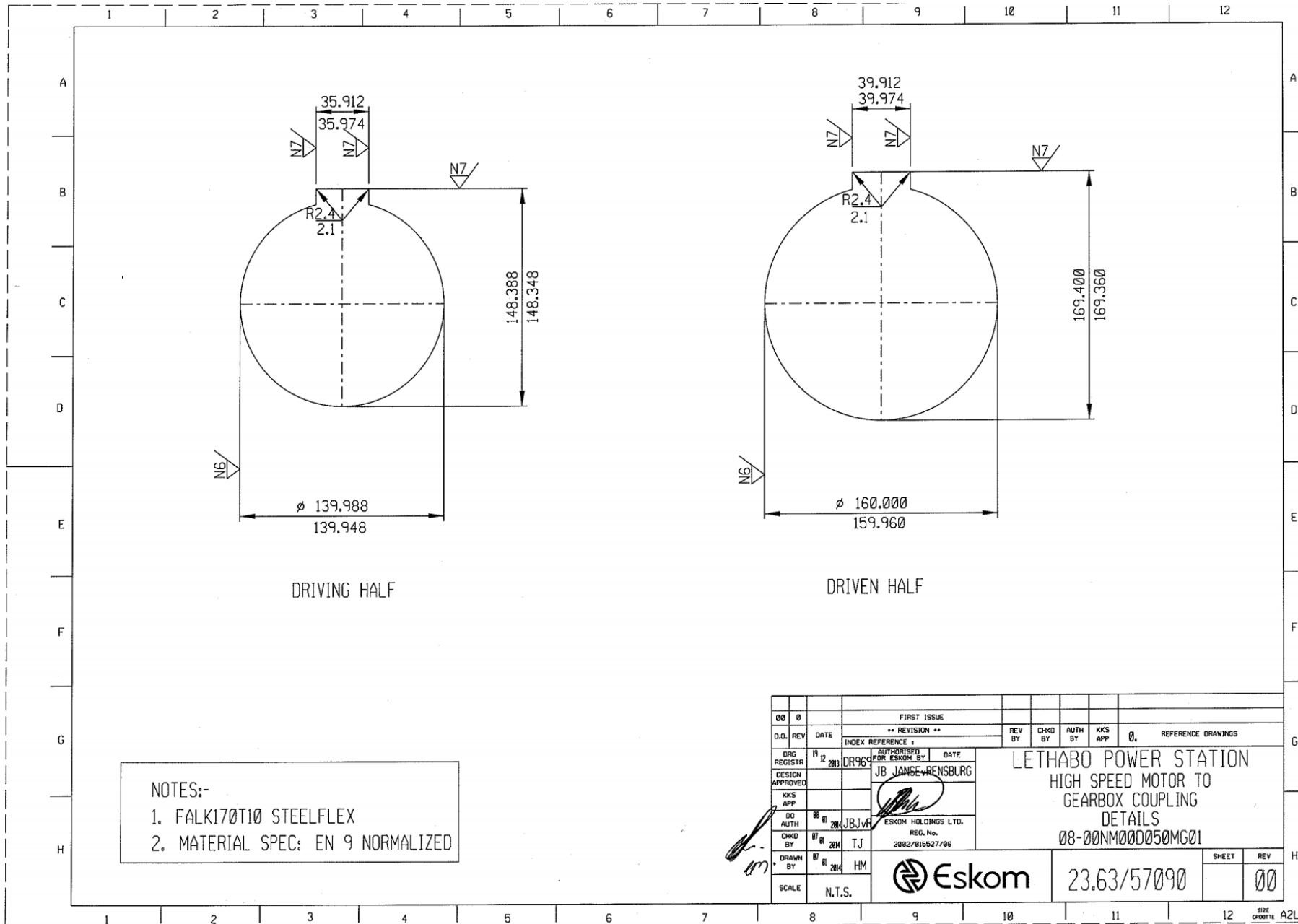
Drawing for Material Number 0585644:



NOTES:-
 1. FALK 210T10 STEELFLEX
 2. MATERIAL SPEC: EN 9 NORMALIZED

00		FIRST ISSUE		REV BY		CHKD BY		AUTH BY		DATE		BIRBY TURBOFLEX - 1952 BORE & KEYWAY DETAILS ORDER NO. 307822019 / CONTRACT NO. 1952	
D.O.		INDEX REFERENCE		REV		CHKD		AUTH		DATE		REFERENCE DRAWINGS	
DESIGN		DATE		REV		CHKD		AUTH		DATE		LETHABO POWER STATION SLOW SPEED GEARBOX TO PINION COUPLING DETAILS 08-00NM000050MG01	
APPROVED		DATE		REV		CHKD		AUTH		DATE		08-00NM000050MG01	
DESIGN		DATE		REV		CHKD		AUTH		DATE		Eskom 23.63/57089	
APPROVED		DATE		REV		CHKD		AUTH		DATE		SHEET 00 REV 00	
SCALE		N.T.S.		REV		CHKD		AUTH		DATE		SIZE A2L CROUITE	

Drawing for Material Number 0585645:



NOTES:-
 1. FALK170T10 STEELFLEX
 2. MATERIAL SPEC: EN 9 NORMALIZED

00	0	FIRST ISSUE										
D.O. REV		DATE	** REVISION **		REV BY	CHKD BY	AUTH BY	KKS APP	0.	REFERENCE DRAWINGS		
DRG REGISTR	12	2013	DR969	AUTHORISED FOR ESKOM BY	DATE	LETHABO POWER STATION HIGH SPEED MOTOR TO GEARBOX COUPLING DETAILS 08-00NM000050MG01						
DESIGN APPROVED				JB JANCZEWSBURG								
KKS APP												
DO AUTH	08	01	2014	ESKOM HOLDINGS LTD.								
CHKD BY	07	01	2014	REG. No. 2802/019527/06	TJ							
DRAWN BY	07	01	2014		HM	Eskom		23.63/57090	SHEET	REV	00	
SCALE	N.T.S.										SIZE A2L	