



## **SCOPE OF WORK**

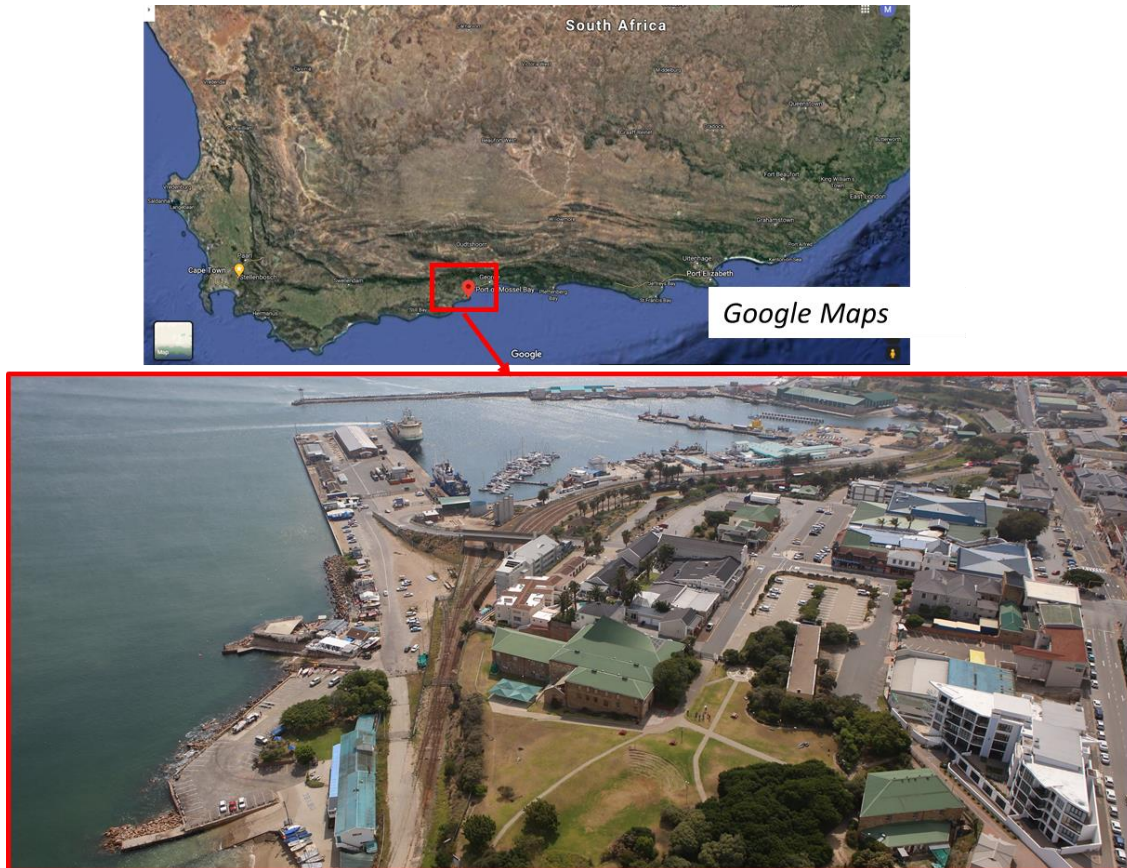
**PROJECT:** Supply, Delivery and commissioning of a 17 meter reach towable electric Cherry Picker to the Port of Mossel Bay

**LOCATION:** Port of Mossel Bay



## 1. LOCALITY

Transnet SOC Ltd (reg.no.1990/000900/30) operates as Transnet National Ports Authority (hereinafter referred to as “TNPA”) at the Port of Mossel Bay. The Port of Mossel Bay is one of eight commercial ports of TNPA (“the Employer”) and it is located in the Western Cape Province. The Port is surrounded by the town of Mossel Bay, and it is centrally located between the city of Cape Town and Gqeberha. Figure 1 below reflects the aerial view of the Port of Mossel Bay (34° 11' 00'' S; 22° 08' 00'' E).



*Figure 1: Aerial view of port of Mossel Bay*

## 2. EMPLOYER'S OBJECTIVES

The Port of Mossel Bay requires a brand new 17-meter reach towable electric Cherry Picker which is to be procured, delivered and commissioned at the port of Mossel Bay, inclusive of training of operational and maintenance personal. The Cherry Picker shall include a 3 year comprehensive service plan to ensure that the equipment is serviced at the correct intervals to minimize premature component failure.

### 3. OVERVIEW OF AFTERSALES SERVICE

At minimum the service provider shall ensure that the service plan and maintenance stretch/cover a period of 3 years;

- including the case where after sales service costs become a responsibility of the Employer;
- including spares and replacement of wear and tear items for the stated period (Only OEM's parts to be used)

Recommended spares for 3 years of normal operation and maintenance shall be listed and quoted separately, item wise, including labour and all other incidental costs. (e.g., Mandatory routine inspections, procurement of spares when due for replacement, transportation, handling, storage, replacing, insurance, warranties, etc.)

### 4. EXTENT OF THE SUPPLIES

The following shall be delivered with the Cherry Picker:

- Operation and maintenance instruction manual for Cherry Picker;
- Test certificates for important parts of the equipment;
- Detailed technical specification for all components (electrical, mechanical, electronic and hydraulics items)

### 3. APPLICABLE STANDARDS AND REGULATIONS

Equipment, spares, maintenance, routine inspections and aftermarket service shall comply with relevant South African National Standards and Regulations.

### 4. PARTICULAR / GENERIC SPECIFICATION

The following is the technical specification of the Cherry Picker.

Type	Towable Electric Cherry Picker
<b>REACH</b>	
Working Height	17.24 m
Platform Height	15.24 m
Horizontal Outreach	9.14 m
Up and Over Height	5.49 m
Vertical Jib Rotation	130 Degrees
<b>PERFORMANCE</b>	
Frame Leveling	11 Degrees
Leveling Capability	11 Degrees

Outriggers or Stabilizers	Yes
Platform Capacity	227 Kg
Swing	410 Degrees
Swing Type	Non-Continuous
Towing Speed Rating	104 Km/h
<b>POWER SOURCE</b>	
Batteries	4 x 6V 220 amp-hr
<b>GENERAL</b>	
Capacity – Hydraulic Reservoir	22.71 L
Ground Bearing Pressure	2.17 Kg/cm <sup>2</sup>
Machine Weight	2177 Kg

The following are required minimum Features:

- Telescopic upper boom
- Auto levelling hydraulic outriggers
- Tilt alarm and Indicator light
- All motion alarms
- Battery Condition Indicator
- Parking brake
- Hour Meter
- 240V Power cable to platform

## 5. SPECIFIC REQUIREMENTS

- The Supplier shall submit General Arrangement (GA) drawings of the Cherry Picker showing dimensions of various parts.
- The equipment shall be suitably lubricated, and first fill of hydraulic fluid shall be provided by the Supplier.
- The Cherry Picker shall be marked with manufacturer's brand name, model number and capacity.

- The equipment and accessories shall be inspected and tested by duly qualified representative of the Supplier at the Supplier's site. Inspection and Testing involves visual inspection, dimension checking, load testing and hydraulic testing. The equipment will be accepted only after passing all above tests satisfactorily. Proof to be furnished.
- The operation and maintenance manual shall contain full details indicating testing procedures, operation and maintenance procedures of the equipment. Each manual shall also include a complete set of drawing together with test certificates as applicable. All the documents shall be submitted in both hard and soft copy.

## **6. WARRANTY**

The supplier warrants that the goods supplied are new, unused, of the most recent or current models, and that they incorporate all recent improvements in design and materials unless provided otherwise by the Employer. The Supplier further warrants that all goods supplied shall have no defect, arising from design, materials, or workmanship (except when the design and/or material is stated in the Employer's specifications) or from any act or omission of the Supplier, that may develop under normal use of the supplied goods in the conditions prevailing in the country of final destination.

This warranty shall remain valid for twelve (12) months after the goods, or any portion thereof as the case may be, have been delivered to and accepted at the final destination (Port of Mossel Bay), or for eighteen (18) months after the date of shipment from the port or place of loading in the source country, whichever period concludes earlier, unless specified otherwise in the Schedule of Requirements.

Upon receipt of defect notice from the Employer, within the warranty period, the Supplier shall, with all reasonable speed, repair or replace the defective goods or parts thereof, without costs to the Employer.

## **7. PLANT, EQUIPMENT, SUPERVISION, ETC.**

The Supplier shall provide, where necessary and be responsible for the following at own cost and risk:

- Performance or supervision of on-site assembly and/or commissioning of the supplied goods;
- furnishing of tools required for assembly and/or maintenance of the supplied goods;
- furnishing of a detailed operation- and maintenance manuals and warranty documents for each appropriate unit of the supplied goods;

- performance or supervision or maintenance and/or repair of the supplied equipment, for a period of time agreed by the parties, provided that this service shall not relieve the Supplier of any warranty obligations under this contract.

## **5 TRAINING**

The Supplier shall provide training to three employees of TNPA in terms of Operating the Cherry Picker and this price will form part of the Pricing Data. The employees must receive a certificate indicating that they are competent to operate the cherry picker.

The training must cover all aspects but is not limited to the following:

- A comprehensive explanation of electrical, fall and falling object hazards
- Procedures of dealing with each of the types of hazards
- Recognizing and avoiding unsafe conditions
- How to operate the cherry picker including maximum intended load capacity correctly and safely
- Special Manufacturers Requirements
- When and how to perform aerial inspections and maintenance

## **6 PERMITS**

There is a permit-card access system to enter the Port Area. The Port Staff will make arrangement of the required access permits and issue them to the Supplier free of charge. Should any person lose his/her access permit, that must be replaced at a cost of R 467.64 per person, cost to be incurred by the Supplier. This must also apply if permits are not returned at the end of the project completion.

## **7 TENDER VALIDITY PERIOD**

The Bidder's validity period must clearly be stated on the tender. The validity period should preferably not be less than three months. This validity period must be applicable to sub-contractors.

## **8 PAYMENTS**

Payment will be made only for work satisfactorily completed in terms of the contract.

## **9 TECHNICAL DOCUMENTS TO BE SUBMITTED WITH TENDER**

The Bidder shall submit the following documents with the Tender to enable the Employer to select the most suitable Bidder in terms of technical requirements of the equipment and associated maintenance and aftermarket service.

- General Arrangement drawing of the Cherry Picker
- Technical brochures, catalogues etc
- Compliance to Eligibility (Failure of submitting Eligibility Criteria will automatically Disqualify the tender. All Eligibility criteria must be met for your Bid to proceed to the technical evaluation stage.)
- Delivery Lead Time
- Guarantees and Warranties
- Suppliers Specifications
- Track Record

## **10 ANNEXURES**

The following is annexed to the Scope of Work:

- Pricing Information
- Returnable documents
- Technical Evaluation