

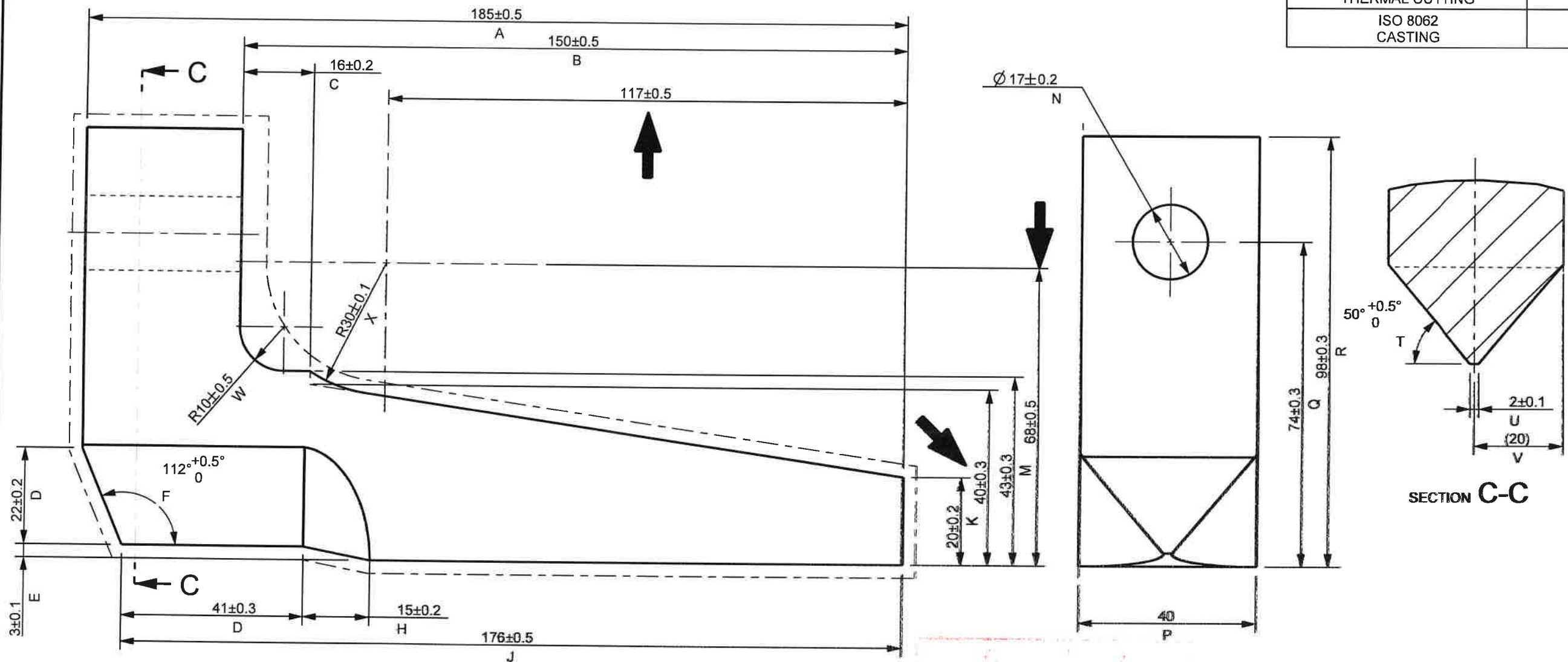
ITEM NO.  
BT DRW. REV\_A

FOR UNTOLERANCED DIMENSIONS SEE ISO 2768-1: DESIGNATION  
FOR GENERAL TOLERANCE ON WELDED CONSTRUCTIONS SEE ISO 13920: CLASS

2D STATUS  
IN WORK

GROUP 11.11

GENERAL TOLERANCES	
ISO 14405-1 DIMENSIONAL TOLERANCING	ISO 13920-B F WELDEMENTS
ISO 8015 TOLERANCING	EN 10243-F FORGING
ISO 2768-mK-E LINEAR DIMENSIONS, SYMMETRY	DIN 6935 COLD BENDING
ISO 9013-422 THERMAL CUTTING	DIN 6930-m STAMPING
ISO 8062 CASTING	



NOTE:  
FOR CUTTING, REFER TO DRAWING NO: CUT\_28A0131

- REV\_7  
DIMENSION ADDED  
PD\_PEL\_KLP\_DRW\_23E  
2018-11-09 S.W.S.
- REV\_6  
CHANGES AS PER  
BT DRW REV\_A  
PD\_PEL\_KLP\_DRW\_23E  
2017-01-19 S.W.S.
- REV\_5  
CHANGES AS PER  
BT DRW REV\_A(DRAFT)  
PD\_PEL\_KLP\_DRW\_23E  
2016-12-07 S.W.S.
- REV\_4  
MACHINING LINES ADDED  
PD\_PEL\_KLP\_DRW\_23E  
2016-11-14 S.W.S.
- REV\_3  
TOLERANCES ALTERED  
PD\_PEL\_KLP\_DRW\_23E  
2015-11-11 M.J.M.
- REV\_2  
LETTERS ADDED FOR  
SOP.  
PD\_PEL\_KLP\_DRW\_23E.  
2015-08-12 M.J.M.
- REV\_1  
MACHINING SKETCH  
ADDED.  
PD\_PEL\_KLP\_DRW\_23E  
2015-06-23 M.N.N.

AMENDMENTS	
MASS	2.23 Kg

COPYRIGHT  
THIS DRAWING TOGETHER WITH THE COPYRIGHT  
IS THE PROPERTY OF  
TRANSNET  
THIS DRAWING OR ANY PART THEREOF IS NOT  
TO BE COPIED OR OTHERWISE REPRODUCED  
OR USED FOR MANUFACTURE OR ANY OTHER  
PURPOSE WITHOUT THE WRITTEN PERMISSION  
FROM  
CHIEF EXECUTIVE,  
TRANSNET ENGINEERING

ASSEMBLY DRG No. 28A0100	DRAWN	M.J.M.
	CHECKED	M.N.N.
CLASS 23E	APPROVED	B.E.D.
TYPE ELECTRIC LOCOMOTIVE	DATE	
	SCALE	1:1
DOCUMENT REFERENCE No.	PD_PEL_KLP_DRW_23E	

KILNER PARK LOCOMOTIVES  
HORIZONTAL DAMPER SUPPORT  
BOGIE FRAME

MATERIAL  
STEEL  
SANS 50025 GR S355 J2+N  
PLATE 40  
180 x 98

SHEET 1 OF 1

A-3 PROJECTION

TRANSNET ENGINEERING

No.

MAC\_28A0131

REV. -7

ITEM NO.   
 BT DRW. REV\_A

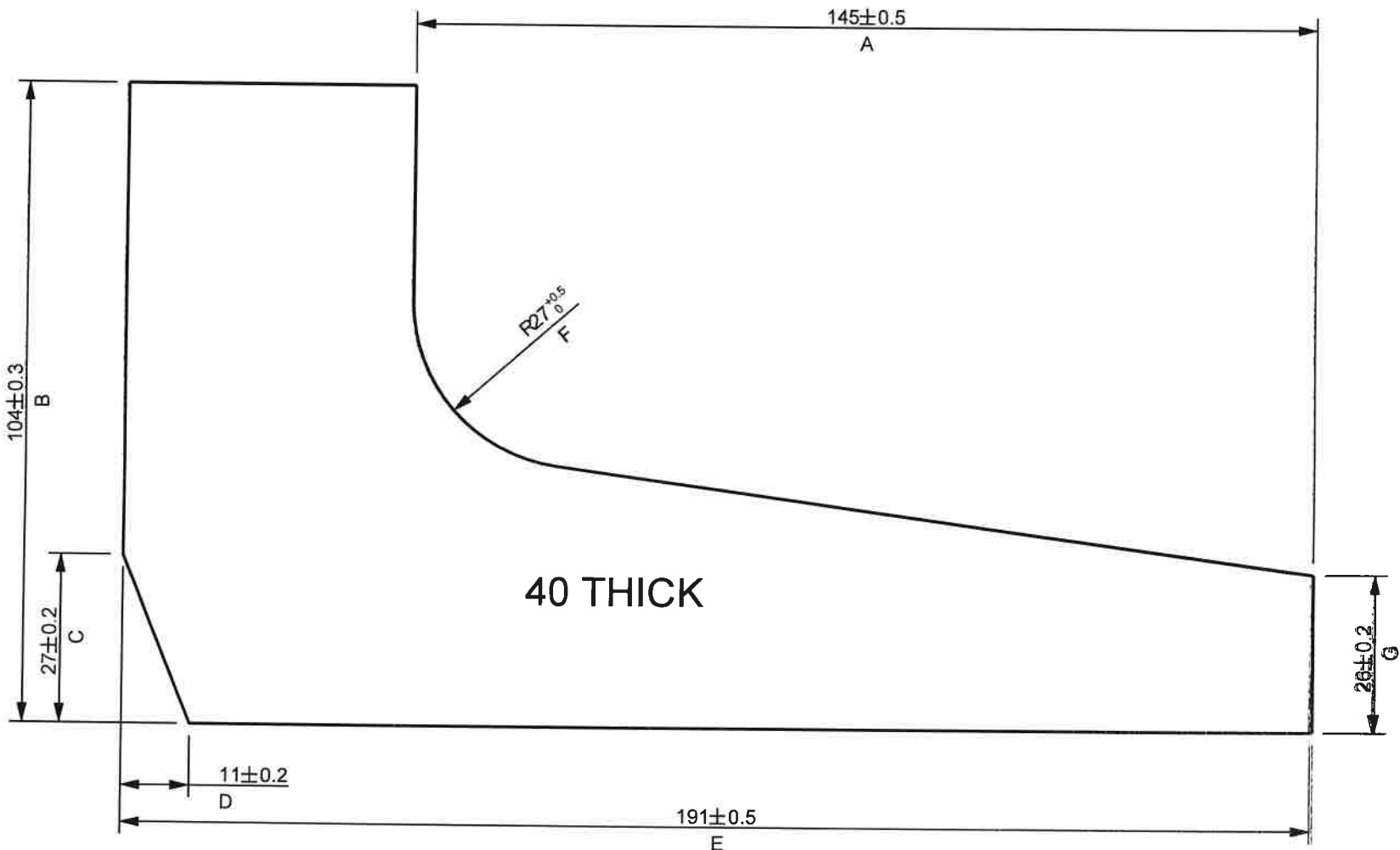
FOR UNTOLERANCED DIMENSIONS SEE ISO 2768-1:   
 FOR GENERAL TOLERANCE ON WELDED CONSTRUCTIONS SEE ISO 13920: CLASS

DESIGNATION   
 M   
 A E

2D STATUS   
 IN WORK

GROUP 11.11

GENERAL TOLERANCES	
ISO 14405-1 DIMENSIONAL TOLERANCING	ISO 13920-B F WELDMENTS
ISO 8015 TOLERANCING	EN 10243-F FORGING
ISO 2768-mK-E LINEAR DIMENSIONS, SYMMETRY	DIN 6935 COLD BENDING
ISO 9013-422 THERMAL CUTTING	DIN 6930-m STAMPING
ISO 8062 CASTING	



REV\_7   
 CHANGES AS PER   
 BT DRW REV\_A   
 PD\_PEL\_KLP\_DRW\_23E   
 2017-01-19 S.W.S.   
 REV\_6   
 CHANGES AS PER   
 BT DRW REV\_A(DRAFT)   
 PD\_PEL\_KLP\_DRW\_23E   
 2016-12-07 S.W.S.   
 REV\_5   
 DIMENSIONS ALTERED   
 PD\_PEL\_KLP\_DRW\_23E   
 2016-07-11 S.W.S.   
 REV\_4   
 TOLERANCES ALTERED   
 PD\_PEL\_KLP\_DRW\_23E   
 2015-10-20 M.J.M.   
 REV\_3   
 TOLERANCES ALTERED   
 PD\_PEL\_KLP\_DRW\_23E   
 2015-09-03 M.J.M.   
 REV\_2   
 TOLERANCE HAS BEEN   
 AMENDED   
 PD\_PEL\_KLP\_DRW\_23E   
 2015-05-18 M.P.T.   
 REV\_1   
 CUTTING MARGINS ADDED   
 PD\_PEL\_KLP\_DRW\_23E   
 2015-05-06 M.N.N.



PART EDGES ISO 13715

AMENDMENTS	
MASS	3.11 Kg

COPYRIGHT   
 THIS DRAWING TOGETHER WITH THE COPYRIGHT   
 IS THE PROPERTY OF   
 TRANSNET   
 THIS DRAWING OR ANY PART THEREOF IS NOT   
 TO BE COPIED OR OTHERWISE REPRODUCED   
 OR USED FOR MANUFACTURE OR ANY OTHER   
 PURPOSE WITHOUT THE WRITTEN PERMISSION   
 FROM   
 CHIEF EXECUTIVE,   
 TRANSNET ENGINEERING

ASSEMBLY DRG No.	DRAWN	M.J.M.
	CHECKED	M.N.N.
CLASS 23E	APPROVED	B.E.D.
TYPE ELECTRIC LOCOMOTIVE	DATE	
	SCALE	1:1

KILNER PARK   
 LOCOMOTIVES   
 HORIZONTAL DAMPER SUPPORT

MATERIAL

STEEL   
 SANS 5025 GR S355 J2+H   
 PLATE 40   
 192x107

SHEET 1 OF 1

A-3 PROJECTION

DOCUMENT REFERENCE No.   
 PD\_PEL\_KLP\_DRW\_23E

TRANSNET ENGINEERING

No.

CUT 28A0131

REV.   
 -7

ITEM NO.   
BT DRW. REV\_0

FOR UNTOLERANCED DIMENSIONS SEE ISO 2768-1: DESIGNATION   
FOR GENERAL TOLERANCE ON WELDED CONSTRUCTIONS SEE ISO 13920: CLASS

M  
A E

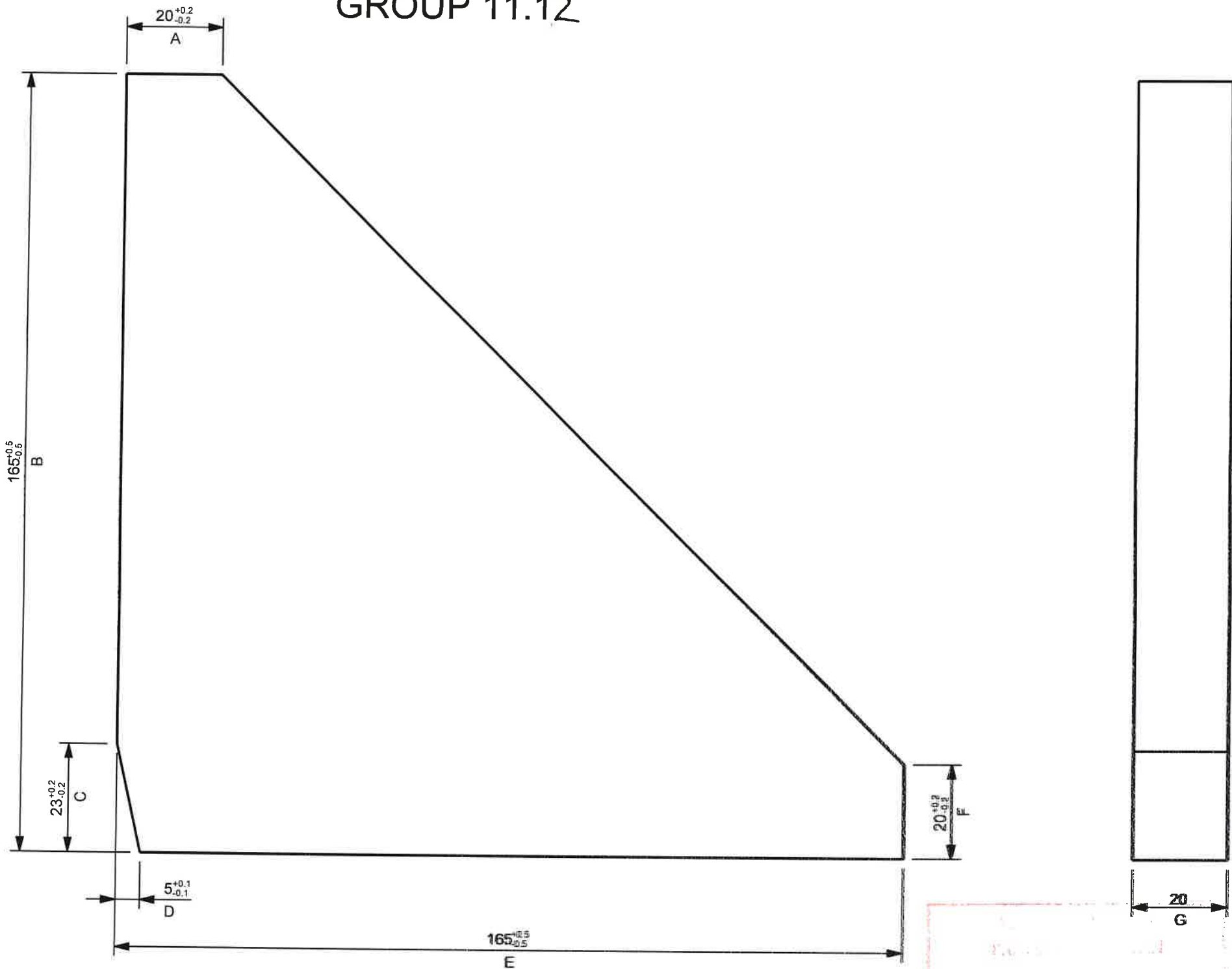
2D STATUS IN WORK

GENERAL TOLERANCES

ISO 14405-1 DIMENSIONAL TOLERANCING	ISO 13920-B F WELDMENTS
ISO 8015 TOLERANCING	EN 10243-F FORGING
ISO 2768-mK-E LINEAR DIMENSIONS, SYMMETRY	DIN 6935 COLD BENDING
ISO 9013-422 THERMAL CUTTING	DIN 6930-m STAMPING
ISO 8062 CASTING	

NOTE:

FOR CUTTING, REFER TO  
DRAWING NO: CUT\_28A0132



12.5



PART EDGES ISO 13715

REV\_4  
TOLERANCES ALTERED  
PD\_PEL\_KLP\_DRW\_23E  
2015-12-09 M.J.M.

REV\_3  
MACHINING SKETCH  
REMOVED.  
PD\_PEL\_KLP\_DRW\_23E  
2015-09-21 M.J.M.

REV\_2  
LETTERS ADDED FOR  
SOP.  
PD\_PEL\_KLP\_DRW\_23E.  
2015-08-12 M.J.M.

REV\_1  
MACHINING SKETCH  
ADDED.  
PD\_PEL\_KLP\_DRW\_23E  
2015-06-23. M.N.N.

AMENDMENTS

MASS 2.61 Kg

**COPYRIGHT**  
THIS DRAWING TOGETHER WITH THE COPYRIGHT  
IS THE PROPERTY OF  
**TRANSNET**  
THIS DRAWING OR ANY PART THEREOF IS NOT  
TO BE COPIED OR OTHERWISE REPRODUCED  
OR USED FOR MANUFACTURE OR ANY OTHER  
PURPOSE WITHOUT THE WRITTEN PERMISSION  
FROM  
CHIEF EXECUTIVE,  
TRANSNET ENGINEERING

ASSEMBLY DRG No. 28A0100

DRAWN M.J.M.

CHECKED M.N.N.

CLASS 23E

APPROVED B.E.D.

TYPE ELECTRIC LOCOMOTIVE

DATE

SCALE 1:1

KILNER PARK

LOCOMOTIVES

RIB

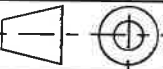
BOGIE FRAME

MATERIAL

STEEL  
SANS 50025 GR S355 J2+N  
PLATE 20  
165 x 165

SHEET 1 OF 1

A-3 PROJECTION



DOCUMENT REFERENCE No.

PD\_PEL\_KLP\_DRW\_23E

TRANSNET ENGINEERING

No.

MAC\_28A0132

REV. 4



ITEM NO.  
BT DRW. REV\_0

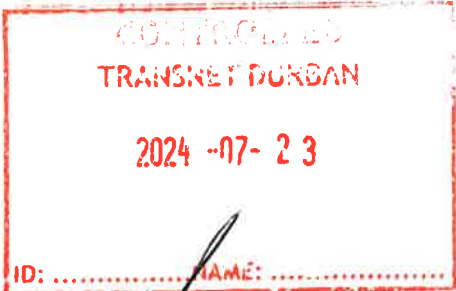
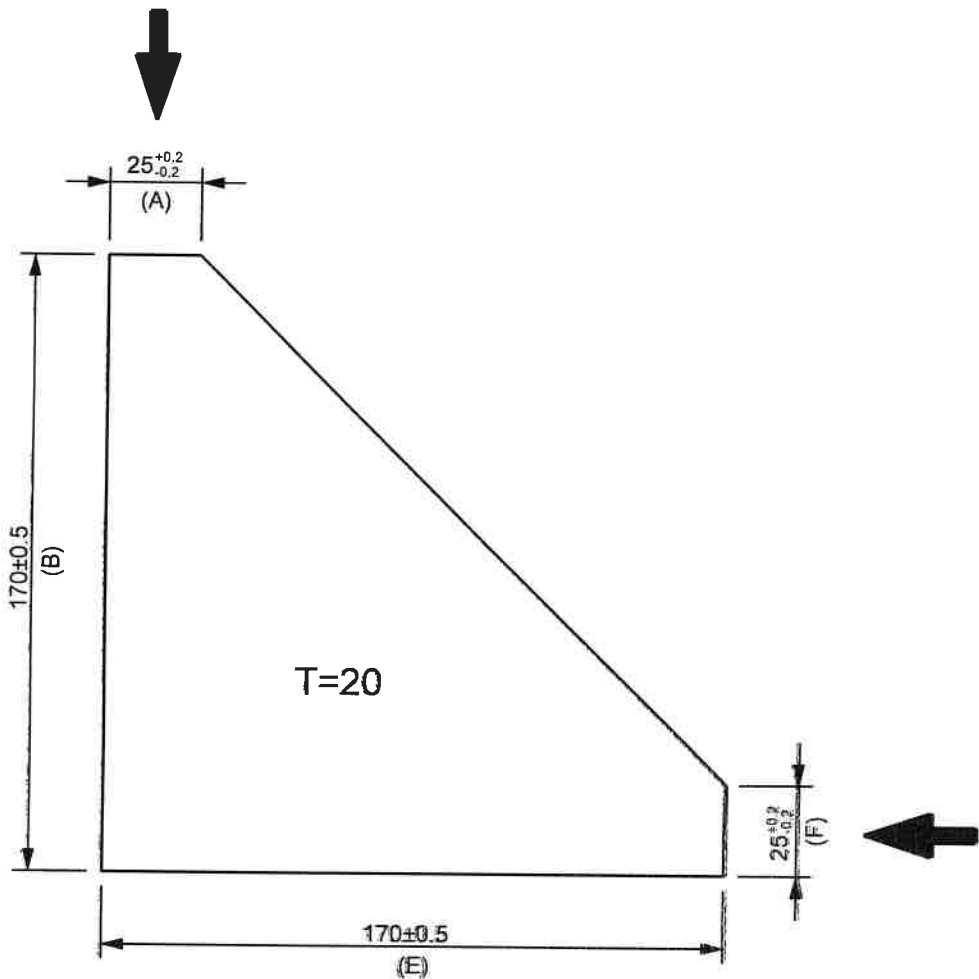
FOR UNTOLERANCED DIMENSIONS SEE ISO 2768-1: DESIGNATION  
FOR GENERAL TOLERANCE ON WELDED CONSTRUCTIONS SEE ISO 13920: CLASS

M  
A E

2D STATUS  
IN WORK

GENERAL TOLERANCES	
ISO 14405-1 DIMENSIONAL TOLERANCING	ISO 13920-B F WELDMENTS
ISO 8015 TOLERANCING	EN 10243-F FORGING
ISO 2768-mK-E LINEAR DIMENSIONS, SYMMETRY	DIN 6935 COLD BENDING
ISO 9013-422 THERMAL CUTTING	DIN 6930-m STAMPING
ISO 8062 CASTING	

GROUP 11.12



REV_6 DIMENSIONS ALTERED PD_PEL_KLP_DRW_23E 2019-11-05 S.W.S.
REV_5 TOLERANCES ALTERED PD_PEL_KLP_DRW_23E 2015-10-20 M.J.M.
REV_4 DIMENSIONS ALTERED PD_PEL_KLP_DRW_23E 2015-09-21 M.J.M.
REV_3 TOLERANCES ALTERED PD_PEL_KLP_DRW_23E 2015-09-03 M.J.M.
REV_2 TOLERANCE HAS BEEN AMENDED PD_PEL_KLP_DRW_23E 2015-05-18 M.P.T.
REV_1 CUTTING MARGINS ADDED PD_PEL_KLP_DRW_23E 2015-05-06 M.N.N.



PART EDGES ISO 13715

AMENDMENTS	
MASS	2.89 Kg

**COPYRIGHT**  
THIS DRAWING TOGETHER WITH THE COPYRIGHT  
IS THE PROPERTY OF  
**TRANSNET**  
THIS DRAWING OR ANY PART THEREOF IS NOT  
TO BE COPIED OR OTHERWISE REPRODUCED  
OR USED FOR MANUFACTURE OR ANY OTHER  
PURPOSE WITHOUT THE WRITTEN PERMISSION  
FROM  
CHIEF EXECUTIVE,  
TRANSNET ENGINEERING

ASSEMBLY DRG No.	DRAWN	M.J.M.
	CHECKED	M.N.N.
CLASS 23E	APPROVED	B.E.D.
TYPE ELECTRIC LOCOMOTIVE	DATE	
	SCALE	1:2

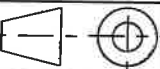
KILNER PARK  
LOCOMOTIVES  
**RIB**

**MATERIAL**

STEEL  
SANS 50025 GR S355 J2+N  
PLATE 20  
165 x 165

SHEET 1 OF 1

A-3 PROJECTION



DOCUMENT REFERENCE No. PD\_PEL\_KLP\_DRW\_23E

TRANSNET ENGINEERING

No.

**CUT 28A0132**

REV. -6

ITEM NO.

BT DRW. REV\_0

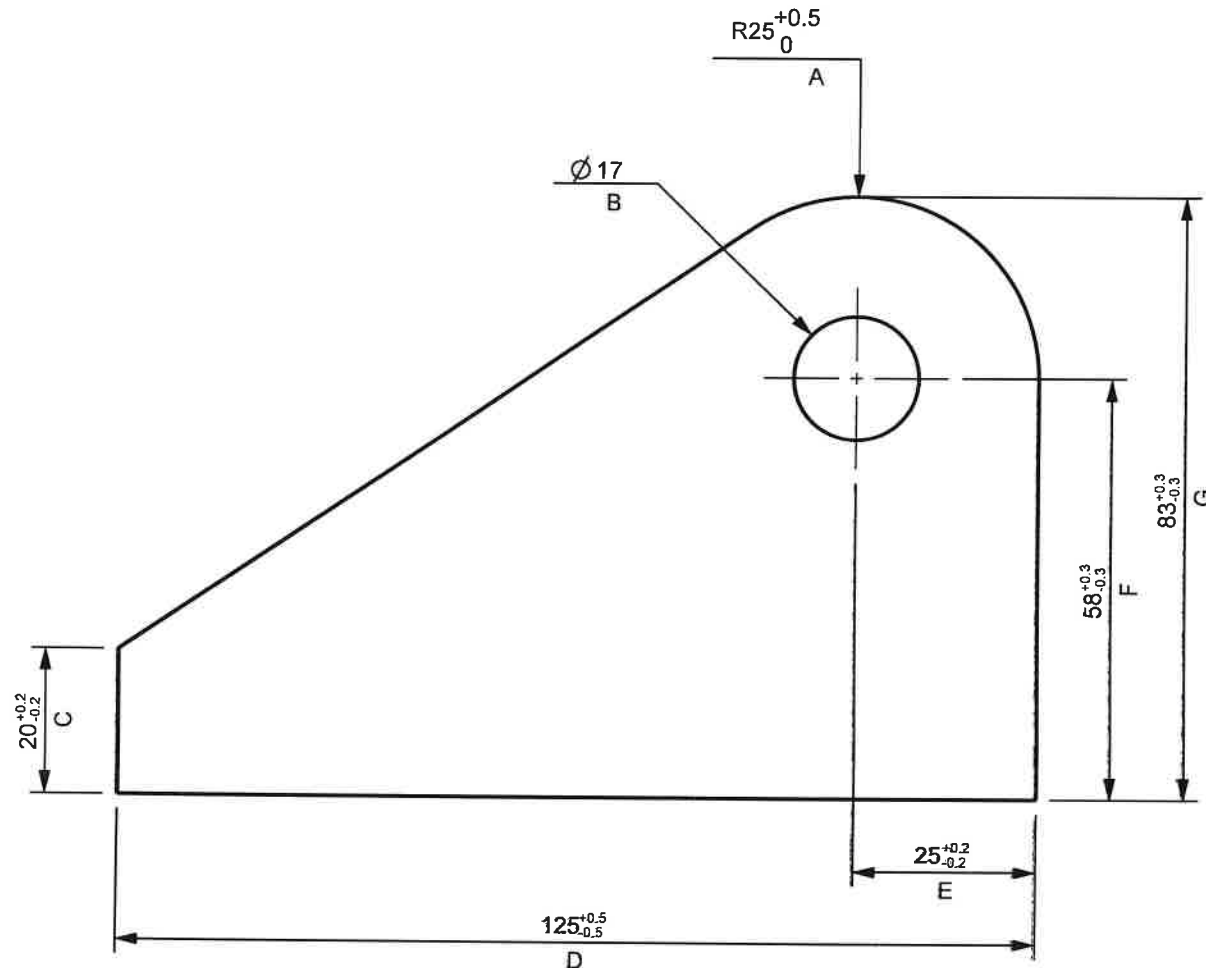
FOR UNTOLERANCED DIMENSIONS SEE ISO 2768-1:      DESIGNATION  
FOR GENERAL TOLERANCE ON WELDED CONSTRUCTIONS SEE ISO 13920: CLASS

M  
A E

2D STATUS    IN WORK

GROUP 11.13

GENERAL TOLERANCES	
ISO 14405-1 DIMENSIONAL TOLERANCING	ISO 13920-B F WELDEMENTS
ISO 8015 TOLERANCING	EN 10243-F FORGING
ISO 2768-mK-E LINEAR DIMENSIONS, SYMMETRY	DIN 6935 COLD BENDING
ISO 9013-422 THERMAL CUTTING	DIN 6930-m STAMPING
ISO 8062 CASTING	



REV\_5  
TOLERANCE REMOVED  
FROM PLATE THICKNESS  
PD\_PEL\_KLP\_DRW\_23E  
2016-07-21    S.W.S

REV\_4  
TOLERANCES ALTERED  
PD\_PEL\_KLP\_DRW\_23E  
2015-11-11    M.J.M.

REV\_3  
MACHINING SKETCH  
REMOVED.  
PD\_PEL\_KLP\_DRW\_23E  
2015-09-21    M.J.M.

REV\_2  
LETTERS ADDED FOR  
SOP.  
PD\_PEL\_KLP\_DRW\_23E.  
2015-08-12    M.J.M.

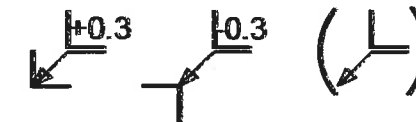
REV\_1  
MACHINING SKETCH  
ADDED.  
PD\_PEL\_KLP\_DRW\_23E  
2015-06-23. M.N.N.

AMENDMENTS  
MASS    0.89 Kg

NOTE:

FOR CUTTING, REFER TO DRAWING NO: CUT\_28A0133

12.5/    3.2/



PART EDGES ISO 13715

<div>COPYRIGHT</div> <div>THIS DRAWING TOGETHER WITH THE COPYRIGHT IS THE PROPERTY OF</div> <div>TRANSNET</div> <div>THIS DRAWING OR ANY PART THEREOF IS NOT TO BE COPIED OR OTHERWISE REPRODUCED OR USED FOR MANUFACTURE OR ANY OTHER PURPOSE WITHOUT THE WRITTEN PERMISSION FROM</div> <div>CHIEF EXECUTIVE, TRANSNET ENGINEERING</div>		ASSEMBLY DRG No. 28A0100		DRAWN	M.J.M.	KILNER PARK		LOCOMOTIVES		MATERIAL	
				CHECKED	M.N.N.	HOLDER		STEEL		SANS 50025 GR S355 J2+N	
		CLASS 23E		APPROVED	B.E.D.						
		TYPE ELECTRIC LOCOMOTIVE		DATE							
				SCALE	1:1	SHEET 1 OF 1		125 x 83			
A-3	PROJECTION	DOCUMENT REFERENCE No.		PD_PEL_KLP_DRW_23E		TRANSNET ENGINEERING		No.	MAC 28A0133		REV. -5

ITEM NO.

BT DRW. REV\_0

FOR UNTOLERANCED DIMENSIONS SEE ISO 2768-1.  
FOR GENERAL TOLERANCE ON WELDED CONSTRUCTIONS SEE ISO 13920: CLASS

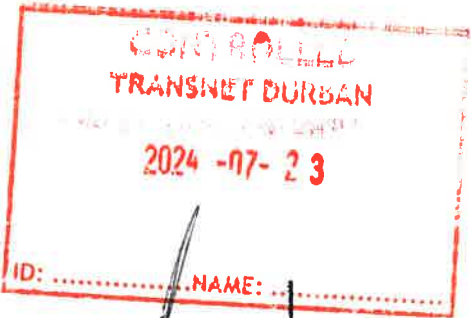
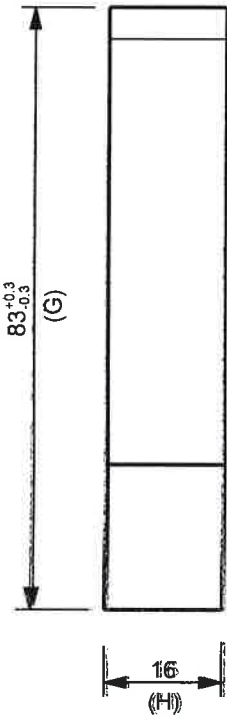
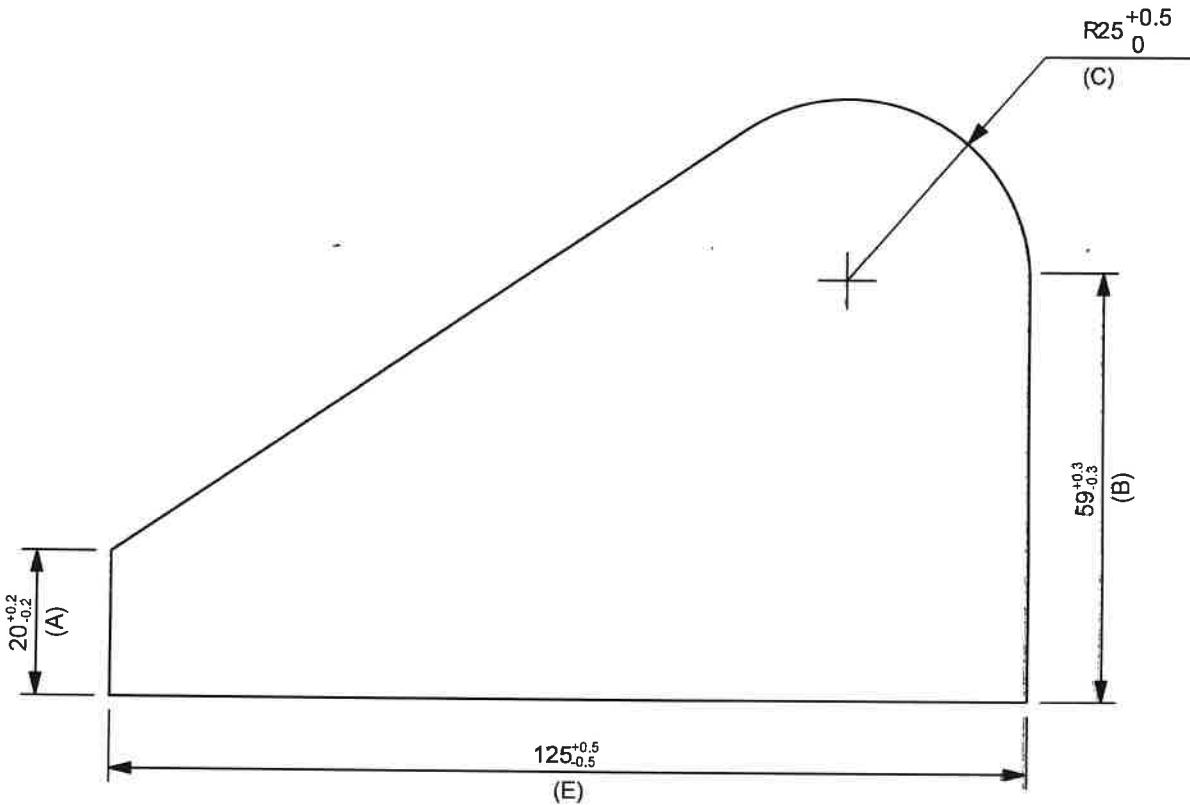
DESIGNATION

M  
A E

2D STATUS IN WORK

GENERAL TOLERANCES	
ISO 14405-1 DIMENSIONAL TOLERANCING	ISO 13920-B F WELDMENTS
ISO 8015 TOLERANCING	EN 10243-F FORGING
ISO 2768-mK-E LINEAR DIMENSIONS, SYMMETRY	DIN 6935 COLD BENDING
ISO 9013-422 THERMAL CUTTING	DIN 6930-m STAMPING
ISO 8062 CASTING	

GROUP 11.13



- REV\_5  
TOLERANCES ALTERED  
PD\_PEL\_KLP\_DRW\_23E  
2015-10-20 M.J.M.
- REV\_4  
HOLE REMOVED AND  
DIMENSIONS ALTERED.  
PD\_PEL\_KLP\_DRW\_23E  
2015-09-21 M.J.M.
- REV\_3  
TOLERANCES ALTERED  
PD\_PEL\_KLP\_DRW\_23E  
2015-09-03 M.J.M.
- REV\_2  
TOLERANCE HAS BEEN  
AMENDED  
PD\_PEL\_KLP\_DRW\_23E  
2015-05-18 M.P.T.
- REV\_1  
CUTTING MARGINS ADDED  
PD\_PEL\_KLP\_DRW\_23E  
2015-05-06 M.N.N.



PART EDGES ISO 13715

AMENDMENTS	
MASS	0.92 Kg

**COPYRIGHT**  
THIS DRAWING TOGETHER WITH THE COPYRIGHT  
IS THE PROPERTY OF  
**TRANSNET**  
THIS DRAWING OR ANY PART THEREOF IS NOT  
TO BE COPIED OR OTHERWISE REPRODUCED  
OR USED FOR MANUFACTURE OR ANY OTHER  
PURPOSE WITHOUT THE WRITTEN PERMISSION  
FROM  
CHIEF EXECUTIVE,  
TRANSNET ENGINEERING

ASSEMBLY DRG No. 28A0100	DRAWN	M.J.M.
	CHECKED	M.N.N.
CLASS 23E	APPROVED	B.E.D.
TYPE ELECTRIC LOCOMOTIVE	DATE	
	SCALE	1:1

A-3 PROJECTION

DOCUMENT REFERENCE No. PD\_PEL\_KLP\_DRW\_23E

KILNER PARK LOCOMOTIVES

HOLDER

MATERIAL

STEEL  
SANS 50025 GR S355 J2+N  
PLATE 16  
125 x 83

SHEET 1 OF 1

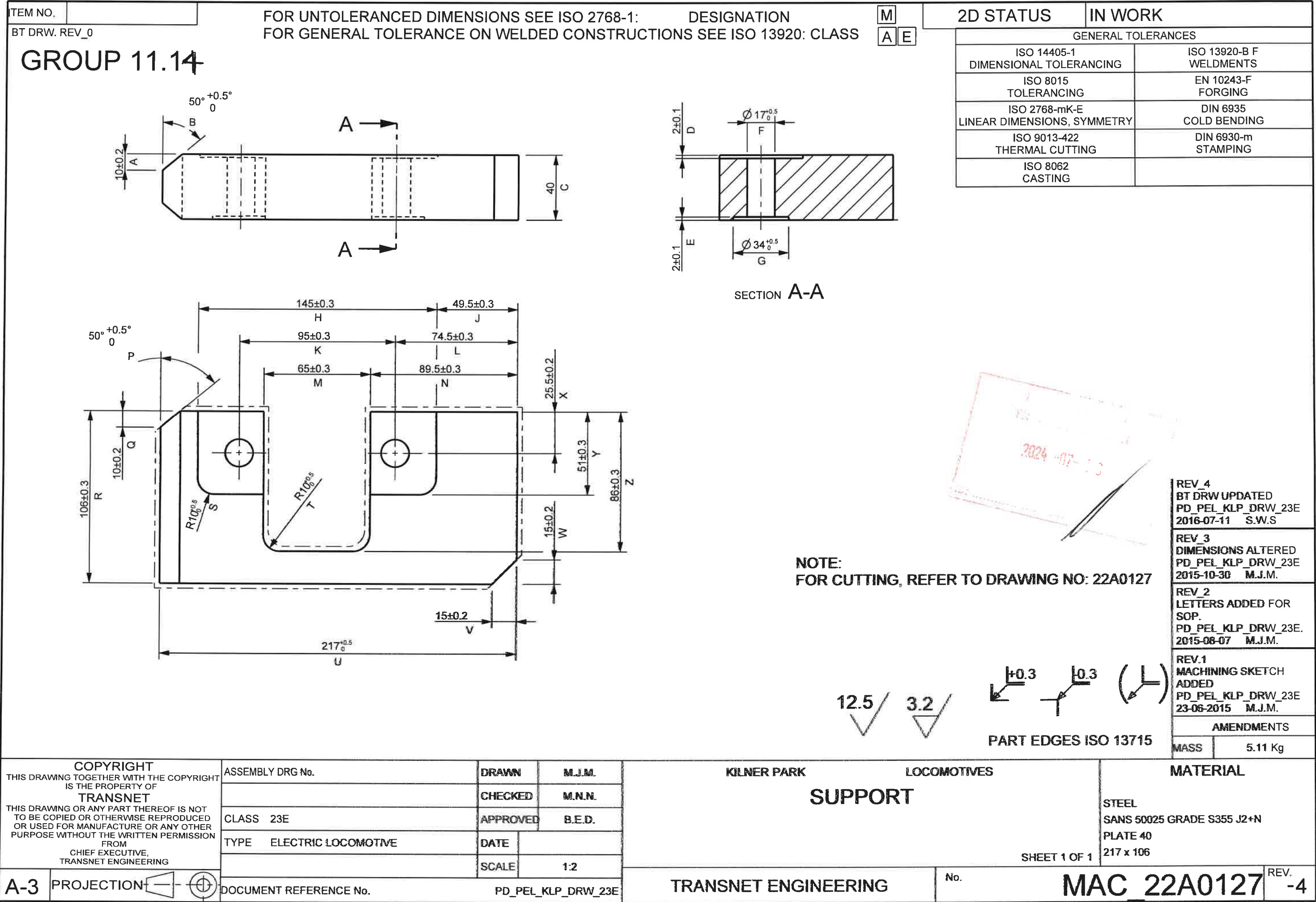
TRANSNET ENGINEERING

No.

CUT 28A0133

REV. -5





ITEM NO.		BT DRW REV_0		FOR UNTOLERANCED DIMENSIONS SEE ISO 2768-1: FOR GENERAL TOLERANCE ON WELDED CONSTRUCTIONS SEE ISO 13920: CLASS		DESIGNATION		M A E		2D STATUS		IN WORK																													
GROUP 11.14																																									
<table><tr><th colspan="2">GENERAL TOLERANCES</th></tr><tr><td>ISO 14405-1 DIMENSIONAL TOLERANCING</td><td>ISO 13920-B F WELDMENTS</td></tr><tr><td>ISO 8015 TOLERANCING</td><td>EN 10243-F FORGING</td></tr><tr><td>ISO 2768-mK-E LINEAR DIMENSIONS, SYMMETRY</td><td>DIN 6935 COLD BENDING</td></tr><tr><td>ISO 9013-422 THERMAL CUTTING</td><td>DIN 6930-m STAMPING</td></tr><tr><td>ISO 8062 CASTING</td><td></td></tr></table>														GENERAL TOLERANCES		ISO 14405-1 DIMENSIONAL TOLERANCING	ISO 13920-B F WELDMENTS	ISO 8015 TOLERANCING	EN 10243-F FORGING	ISO 2768-mK-E LINEAR DIMENSIONS, SYMMETRY	DIN 6935 COLD BENDING	ISO 9013-422 THERMAL CUTTING	DIN 6930-m STAMPING	ISO 8062 CASTING																	
GENERAL TOLERANCES																																									
ISO 14405-1 DIMENSIONAL TOLERANCING	ISO 13920-B F WELDMENTS																																								
ISO 8015 TOLERANCING	EN 10243-F FORGING																																								
ISO 2768-mK-E LINEAR DIMENSIONS, SYMMETRY	DIN 6935 COLD BENDING																																								
ISO 9013-422 THERMAL CUTTING	DIN 6930-m STAMPING																																								
ISO 8062 CASTING																																									
<table><tr><td colspan="4">REV_5 DRAWING UPDATED PD_PEL_KLP_DRW_23E 2016-07-04 S.W.S.</td></tr><tr><td colspan="4">REV_4 DIMENSIONS ALTERED PD_PEL_KLP_DRW_23E 2015-10-30 M.J.M.</td></tr><tr><td colspan="4">REV_3 TOLERANCES ALTERED PD_PEL_KLP_DRW_23E 2015-08-27 M.J.M.</td></tr><tr><td colspan="4">REV_2 TOLERANCE HAS BEEN AMENDED. PD_PEL_KLP_DRW_23E 2015-05-18. M.N.N.</td></tr><tr><td colspan="4">REV_1 CUTTING MARGINS ADDED PD_PEL_KLP_DRW_23E 2015-05-04 M.J.M.</td></tr><tr><td colspan="4">AMENDMENTS</td></tr><tr><td colspan="2">PART EDGES ISO 13715</td><td>MASS</td><td>6.19 Kg</td></tr></table>														REV_5 DRAWING UPDATED PD_PEL_KLP_DRW_23E 2016-07-04 S.W.S.				REV_4 DIMENSIONS ALTERED PD_PEL_KLP_DRW_23E 2015-10-30 M.J.M.				REV_3 TOLERANCES ALTERED PD_PEL_KLP_DRW_23E 2015-08-27 M.J.M.				REV_2 TOLERANCE HAS BEEN AMENDED. PD_PEL_KLP_DRW_23E 2015-05-18. M.N.N.				REV_1 CUTTING MARGINS ADDED PD_PEL_KLP_DRW_23E 2015-05-04 M.J.M.				AMENDMENTS				PART EDGES ISO 13715		MASS	6.19 Kg
REV_5 DRAWING UPDATED PD_PEL_KLP_DRW_23E 2016-07-04 S.W.S.																																									
REV_4 DIMENSIONS ALTERED PD_PEL_KLP_DRW_23E 2015-10-30 M.J.M.																																									
REV_3 TOLERANCES ALTERED PD_PEL_KLP_DRW_23E 2015-08-27 M.J.M.																																									
REV_2 TOLERANCE HAS BEEN AMENDED. PD_PEL_KLP_DRW_23E 2015-05-18. M.N.N.																																									
REV_1 CUTTING MARGINS ADDED PD_PEL_KLP_DRW_23E 2015-05-04 M.J.M.																																									
AMENDMENTS																																									
PART EDGES ISO 13715		MASS	6.19 Kg																																						
COPYRIGHT THIS DRAWING TOGETHER WITH THE COPYRIGHT IS THE PROPERTY OF TRANSNET THIS DRAWING OR ANY PART THEREOF IS NOT TO BE COPIED OR OTHERWISE REPRODUCED OR USED FOR MANUFACTURE OR ANY OTHER PURPOSE WITHOUT THE WRITTEN PERMISSION FROM CHIEF EXECUTIVE, TRANSNET ENGINEERING		ASSEMBLY DRG No.		DRAWN M.J.M.		KILNER PARK		LOCOMOTIVES		MATERIAL																															
				CHECKED M.N.N.		SUPPORT				STEEL																															
		CLASS 23E		APPROVED B.E.D.		SIDE BEAM RIGHT				SANS 50025 GRADE S355 J2+N																															
		TYPE ELECTRIC LOCOMOTIVE		DATE						PLATE 40																															
				SCALE		1:1				223 x 112																															
A-3 PROJECTION		DOCUMENT REFERENCE No.		PD_PEL_KLP_DRW_23E		TRANSNET ENGINEERING		No.		CUT_22A0127		REV. -5																													



