

GENERAL NOTES:

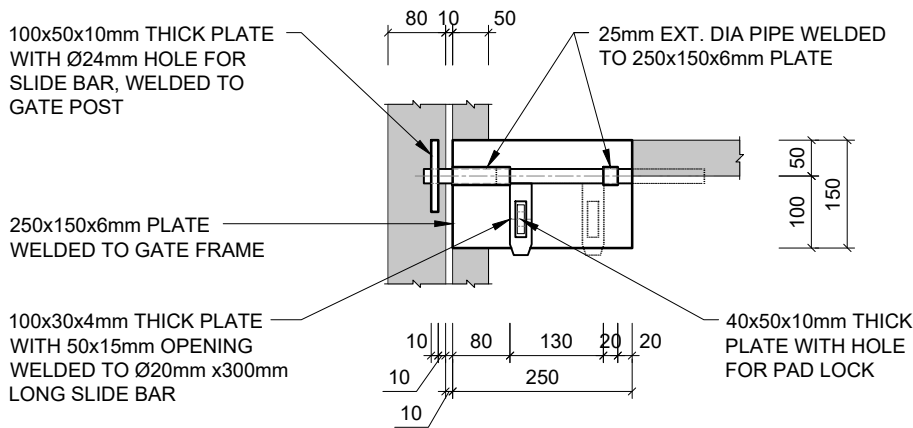
- A. HEIGHT OF WALL IS SITE SPECIFIC. APPOINTED CONSULTING ENGINEER TO CONFIRM DIMENSIONS , INCLUDING BASE DIMENSIONS.
- B. TYPICAL DETAIL ISSUED FOR TENDER PURPOSES ONLY. THE APPOINTED DESIGN ENGINEER/CONSULTING ENGINEER IS TO CHECK ALL DESIGN DIMENSIONS AND REINFORCING REQUIREMENTS, TAKING INTO ACCOUNT GEOTECHNICAL CONDITIONS AND ENSURING COMPLIANCE WITH SANS 10400.

GATE NOTES:

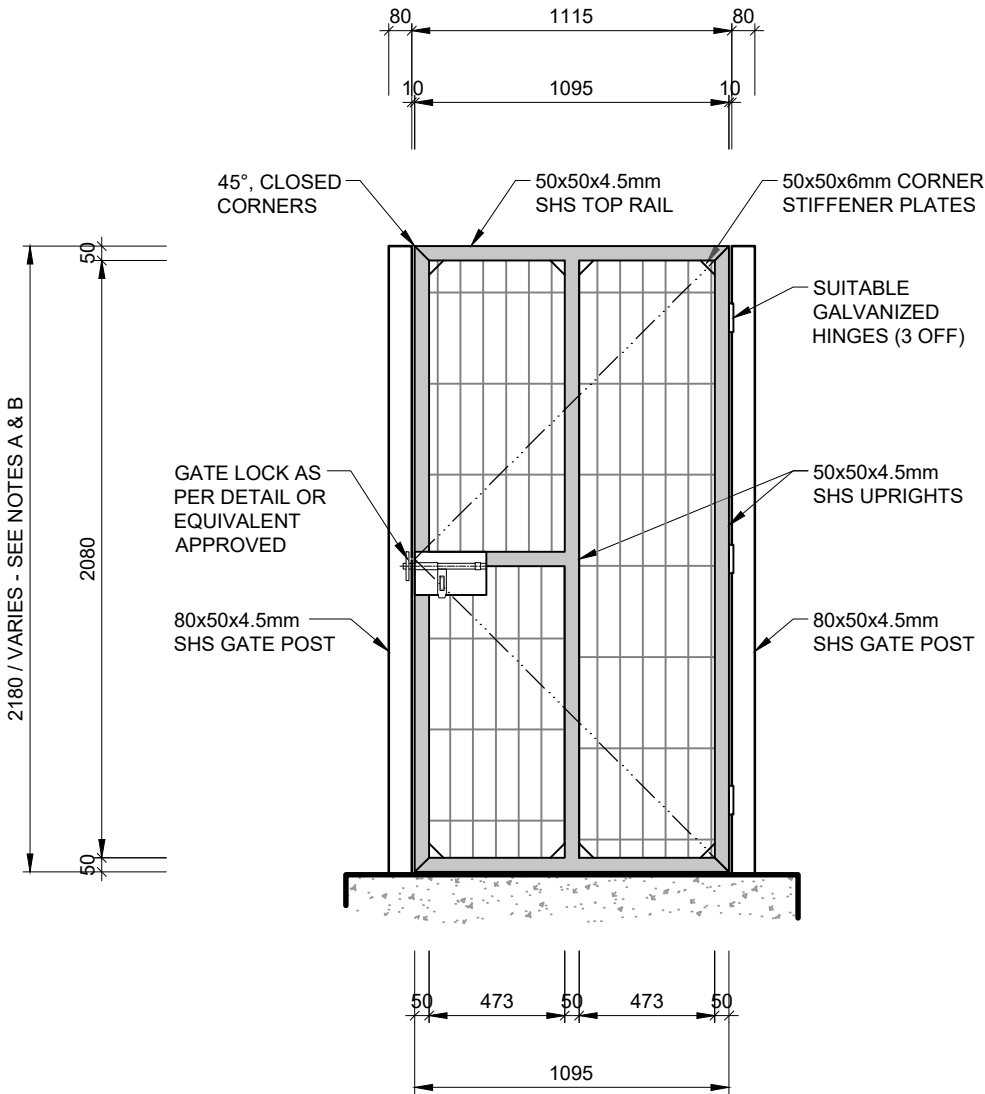
1. PEDESTRIAN GATE - ALL MEMBERS TO BE WELDED.
2. SUITABLE GALVANIZED INDUSTRIAL HEAVY DUTY HINGES (3 OFF) TO PEDESTRIAN GATE.
3. INDUSTRIAL HEAVY DUTY CLOSING MECHANISM WITH VANDALISM PROOF LOCKING PLATES TO BE PROVIDED.
4. GATES INSTALLED DIRECTLY TO BRICK OR CONCRETE WALLS TO HAVE SUITABLE STEEL AS SPECIFIED BY DESIGN ENGINEER.

STEEL NOTES:

1. STEEL WORK ACCORDING TO SANS 2001 CSI.
2. STRUCTURAL STEEL GRADE S355JR ACCORDING SANS 431.
3. WELDING ACCORDING TO SABS 044.
4. ALL BOLTS Grade 8.8 HOT DIPPED GALVANIZED WITH WASHERS (NO ZINC ELECTROPLATED ACCEPTED)
5. STEELWORK TO BE HOT DIP GALVANIZED TO SANS 121 (ISO 1461)
6. WELDING: EDGES TO BE PROPERLY PREPARED ALL ROUND AND 8-10mm FILLET WELD TO BE USED ALL ROUND.
7. SHOP DRAWINGS MUST BE SUPPLIED TO THE ENGINEER FOR APPROVAL PRIOR TO MANUFACTURING.
8. ALL DIMENSIONS HAVE TO BE CHECKED ON SITE PRIOR TO MANUFACTURING!



GATE LOCK DETAIL
SCALE 1:10



PEDESTRIAN GATE DETAIL
SCALE 1:25



FOR TENDER

0 50 MILLIMETRES ON ORIGINAL DRAWING 50

Ⓐ BEFORE CONTRACT COMMENCES
⚠ AFTER CONTRACT HAS COMMENCED

Nr.	DATE	AMENDMENTS

COPYRIGHT IS VESTED IN V3 CONSULTING IN TERMS OF THE COPYRIGHT ACT (ACT 98 OF 1978)



PROJECT
SUPPLY, INSTALLATION & MAINTENANCE OF
PRECAST PERIMETER WALL FOR CITY OF
CAPE TOWN FACILITIES

DRAWING DESCRIPTION
TYPICAL DETAIL: PEDESTRIAN STEEL GATE

DRAWING NO.
10515036-C-603 **0**

DESIGNED: DT		CHECKED: DT	
DRAWN: KS		SCALE: AS SHOWN	A3
APPROVED:		DATE: 2020-10-15	
FILE PATH: Sharepoint \Cape Town - 10515000 CoCTWP195 Bishops Lavis Sport Ground - 10515036\05 Constr\01 Office\05 Draw			