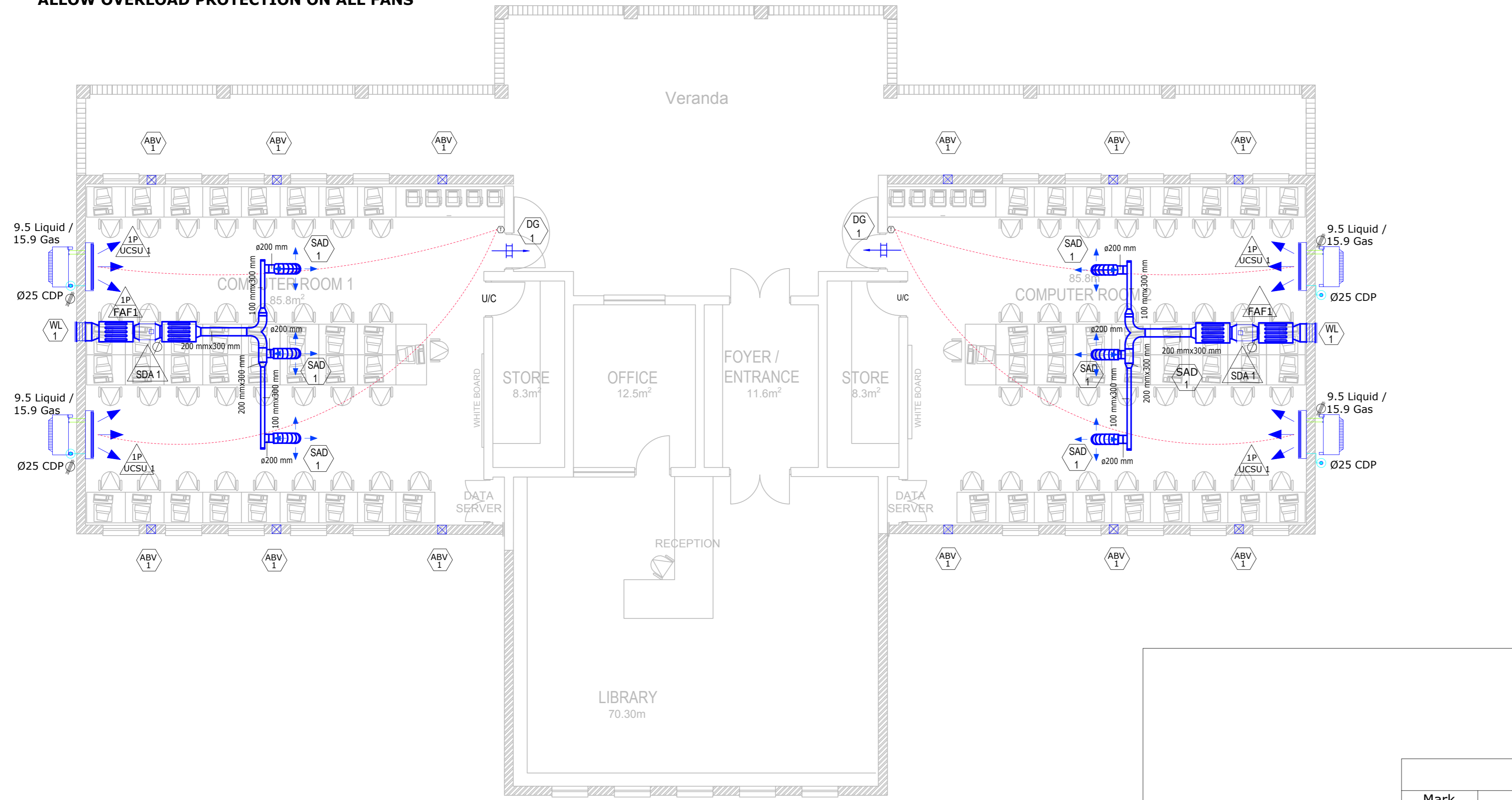


NOTE: ALL HVAC UNITS TO SWITCH OFF IN THE EVENT OF FIRE. SINGLE PHASE FANS TO BE INTERCONNECTED TO LIGHTING WHICH SHALL BE CONTROLLED BY MOTION SENSOR. ALLOW OVERLOAD PROTECTION ON ALL FANS



HVAC FLOOR LAYOUT
SCALE 1:75

LEGEND:

	RAG	RETURN AIR GRILLE
	DV	SUPPLY AIR DISC VALVE
	HWSU	HIGH WALL SPLIT UNIT
	DG	DOOR GRILLE
		CONDENSER UNIT
	CDP	CONDENSATE DRAIN POINT
		HARD WIRED TEMPERATURE CONTROL TO BE LINKED WITH AIRCON UNIT IN ROOM
		1 PHASE ISOLATOR
		3 PHASE ISOLATOR

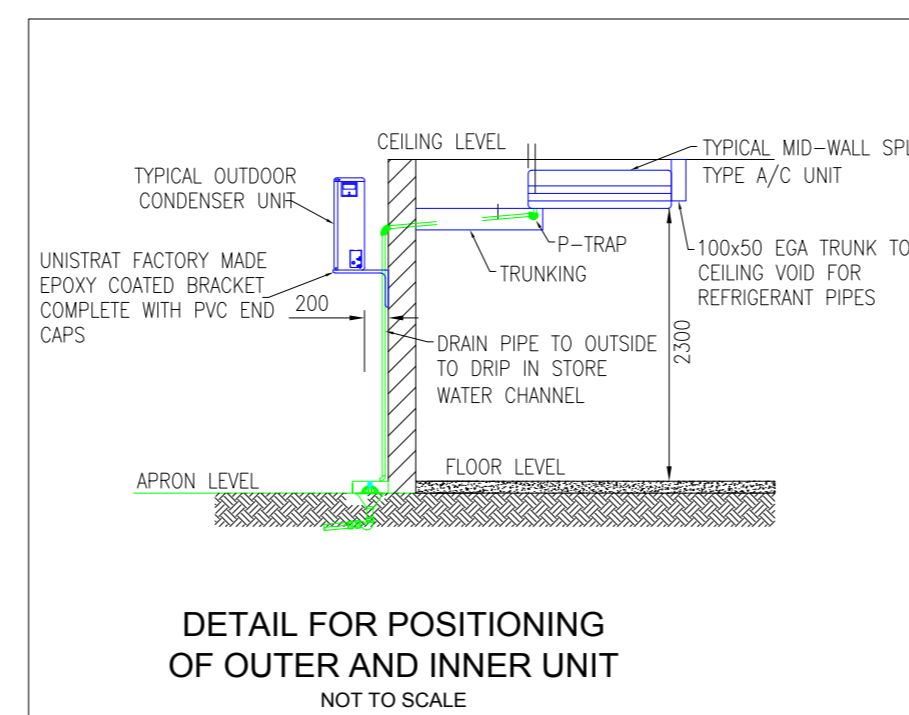
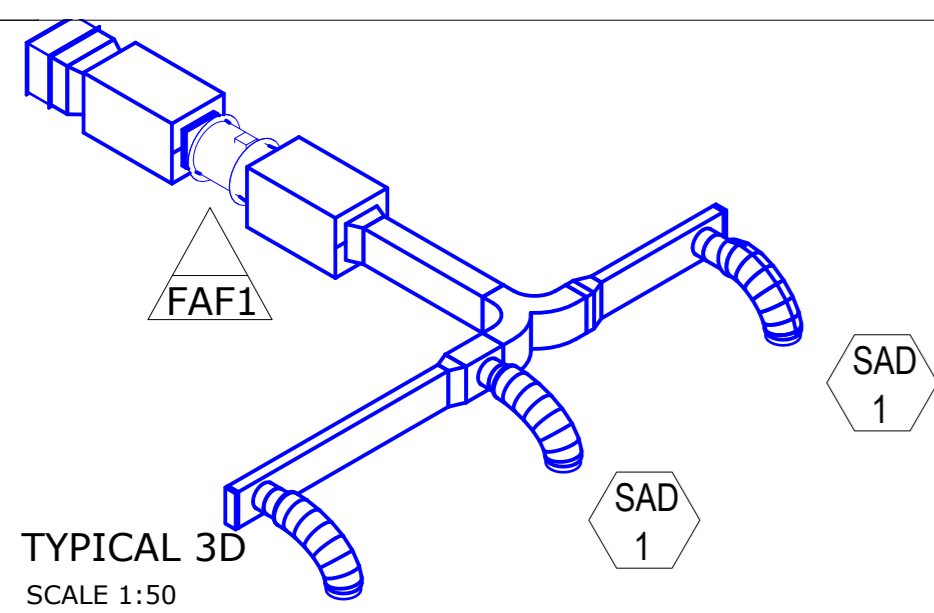
REV	DATE	DESCRIPTION	ISSUED BY	APPR. BY	SIGNATURE
A	21-10-19	ISSUED FOR TENDER ONLY	JM	KH	
B	15-11-19	UPDATED LAYOUTS ISSUED FOR TENDER ONLY	JM	KH	

- NOTES:**
- THIS DRAWING MUST ONLY BE USED FOR THIS MECHANICAL PROJECT, FOR ANY OTHER DETAIL AND BUILDING LAYOUT SEE ARCHITECTS DRAWING.
 - ALL DIMENSIONS MUST BE TAKEN ON SITE.
 - THE EXACT POSITION OF EQUIPMENT WILL BE INDICATED ON SITE BY THE MECHANICAL ENGINEER.
 - DOORS UNDERCUT TO HAVE 25MM UNDERCUT.
 - ALLOW 50MM WOODEN SLEEVES ALL ROUND, UNLESS SPECIFIED OTHERWISE.
 - ALL FANS SHALL BE INTERCONNECTED WITH FIRE DETECTION SYSTEM AND SHALL SHUT-OFF IN THE EVENT OF FIRE.
 - CONTRACTOR TO REPORT UNFORSEEN CLASHES TO THE MECHANICAL ENGINEER.
 - THIS DRAWING IS MERELY A GUIDE AND NO DIMENSIONS SHOULD BE TAKEN DIRECTLY FROM IT. ALL DIMENSIONS TO BE VERIFIED ON SITE.
 - ALL WORK TO BE DONE IN ACCORDANCE WITH NATIONAL BUILDING REGULATIONS AND BUILDING STANDARDS ACT (ACT 107 OF 1977)
 - DUCTING INSTALLATION IN ACCORDANCE TO SANS 1238
 - ALL WEATHER LOUVRE OPENINGS COMPLETE WITH 50MM ALL ROUND TIMBER SLEEVE.
 - ALL DOOR GRILLES TO BE 305MM ABOVE FFL.
 - UNDERSIDE OF ALL TRANSFER GRILLES TO BE 2195MM ABOVE FFL, INCLUDING SLEEVE, UNLESS SPECIFIED OTHERWISE
 - HARD-WIRED CONTROLS TO ALL AC UNITS.
 - DEDICATED SWITCH FOR EXTRACT FANS AS SPECIFIED BY ELECTRICAL ENGINEER.
 - NO GRATING, ANGLE SECTIONS, ETC MAY BE CUT, DRILLED OR WELDED AFTER GALVANIZING
 - THE GULLEYS ARE TO BE LINED WITH A SMOOTH EPOXY SUITABLE FOR SERVICE BETWEEN 0° & 90° AND RESISTANT TO IMPACT AND DETERGENTS
 - FANS TO BE SWITCHED ON FROM WALL MOUNTED SWITCHES NEXT TO THE LIGHT SWITCHES COORDINATED BY ARCHITECTS AND ELECTRICAL ENGINEER.

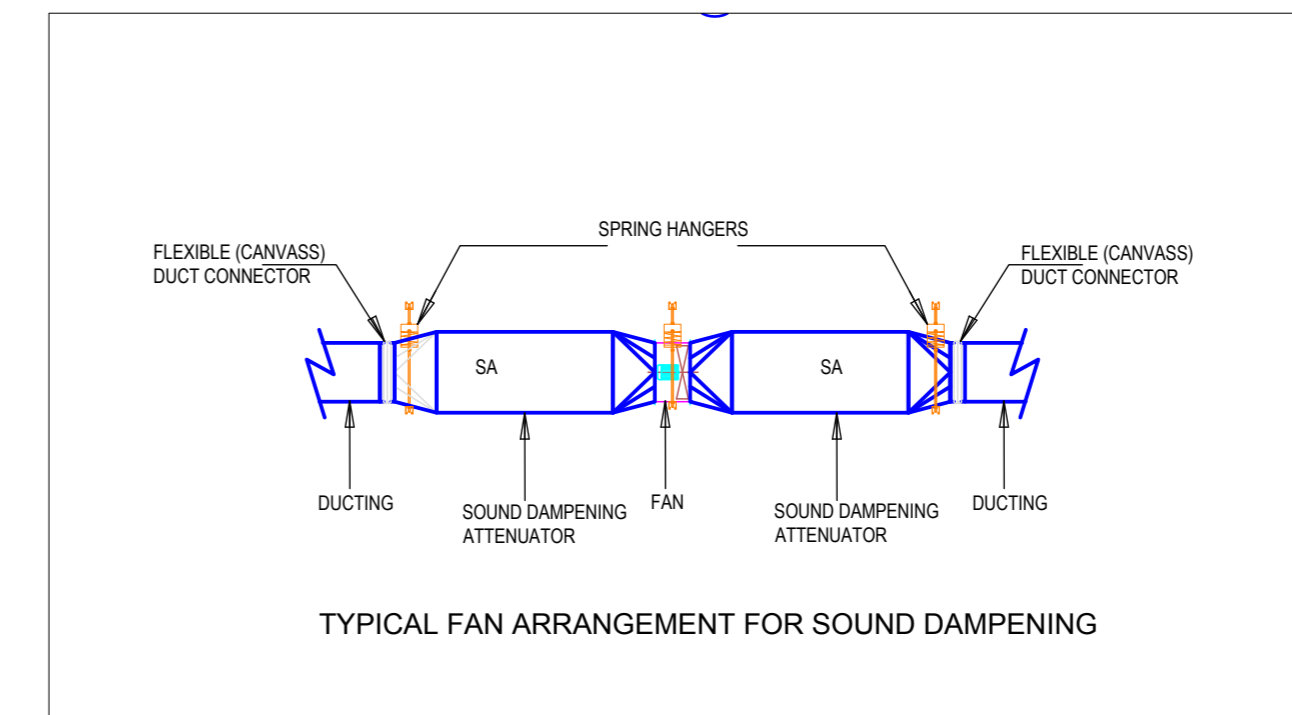
Mark	Description	Size	Sound (dBA)@3m	Count
SDA 1	Sound Dampening attenuator	300x300x850L	40-45	4

Mark	Description	Flow(L/S)	Size(WxHxD)	Count
DG 1	Door Grille c/w Vermin Proof	207.0	425x325	2
FLT 1	Filter Cassette c/w MERV13/F7	270.0	450x400	2
SAD 1	Supply Air Disc Valve	85.0	ø200	6
WL 1	Weather Louvre	270.0	450x400	2
ABV 1	Air Brick Vent	36.0	130x180x230,12	

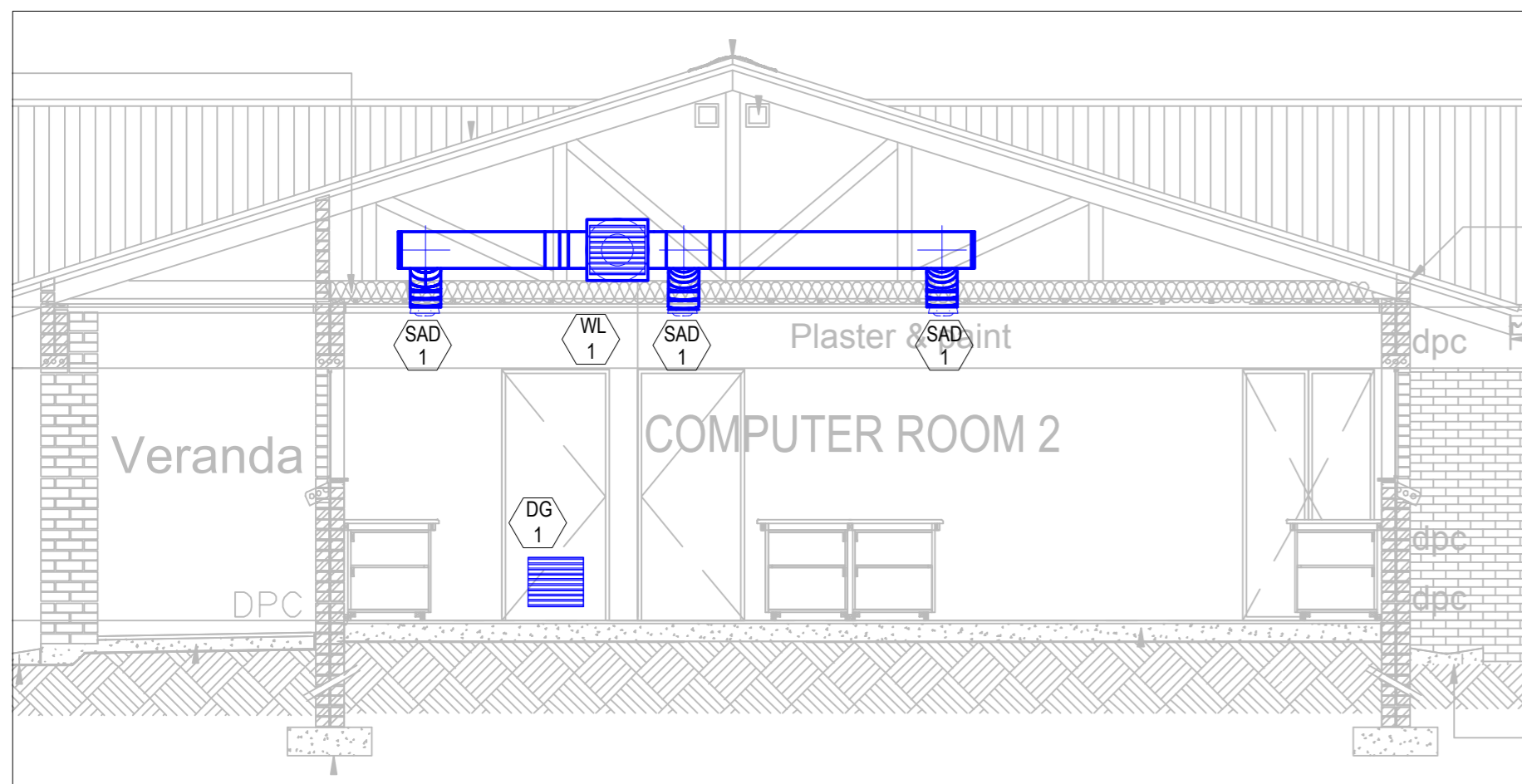
Mark	Description	Cooling Capacity (Kw)	Heating Capacity (Kw)	Fan Speed (RPM)	Sound (dBA)@3m	Flow (L/s)	Pressure (Pa)	Voltage (V)	Input Current(A)	Count
FAF 1	Fresh Air Axial Flow Fan Ø400mm			1400	54	255.0	408.0	220-240	2	2
UCSU 1	Under Ceiling Split Unit	10,6	8.7		40-52	569.0		380-415	11	4



DETAIL FOR POSITIONING OF OUTER AND INNER UNIT
SCALE NTS



TYPICAL FAN ARRANGEMENT FOR SOUND DAMPENING
SCALE 1:50



TYPICAL SECTION 1
SCALE 1:50

FOR TENDER

CLIENT:

CONSULTANT:

Gauteng Office (Head Office)
GladAfrica House, Herford Office Park
90 Bekker Road, Vorna Valley, Midrand, 1686
P.O. Box 6723 Halfway House 1685
Tel: +27 11 312 2537/2584
Fax +27 11 805 1950
www.gladafrika.com

NAME	REG. NO.	SIGNATURE	DATE
DRAWN	MANALA JD	M10037	
DESIGNED	HLATSHWAYO K	201570273	
APPROVED	TUGWETE BP	200970301	

PROJECT DESCRIPTION
TROMPSBURG SPECIAL SCHOOL : SCHOOL SECTION

DRAWING TITLE
MEDIA CENTER HVAC LAYOUT

STATUS LEGEND	SHEET SIZE		
I = INFORMATION	A1		
CV = CONCEPT AND VIABILITY	SCALE		
D = DESIGN DEVELOPMENT	AS SPECIFIED		
T = TENDER			
C = CONSTRUCTION			
AB = AS BUILT			
DISCIPLINE	DRAWING NUMBER	STATUS	REVISION
MECHANICAL	92-ME-AC-002	T	B