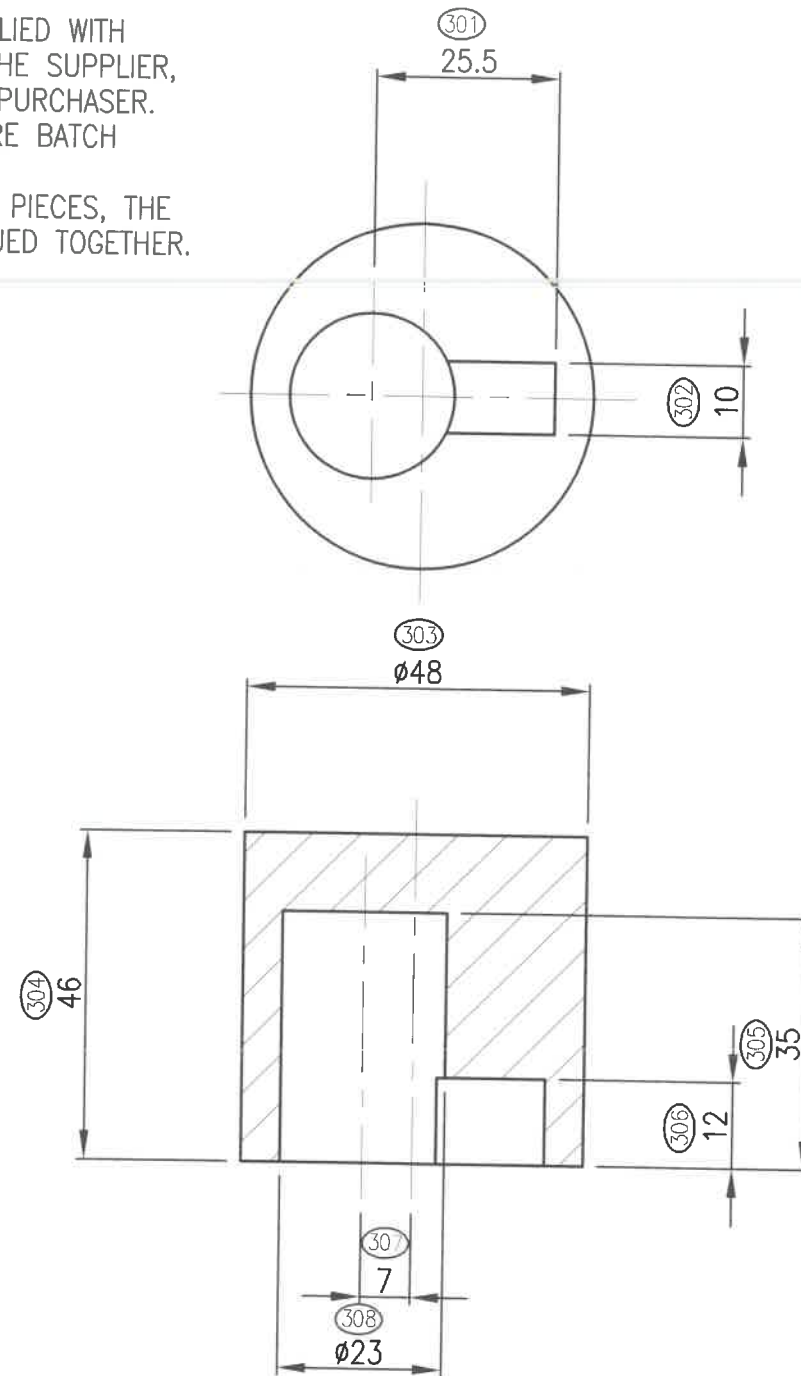


NOTE:

M101D 1. MATERIAL: DOW ETHAFOAM 220 OR ALTERNATIVE AIRSHIELD
CLOSED CELL POLYETHYLENE FOAM CONFORMING
TO SPEC. 04336-010001-111008. THE COLOUR SHALL BE WHITE
OR BLACK OR ANY SHADE OF GREY.
A CERTIFICATE OF CONFORMANCE SHALL BE SUPPLIED WITH
EACH DELIVERY. IF THE C OF C IS OMITTED BY THE SUPPLIER,
A RANDOM SAMPLE SHALL BE ANALYSED BY THE PURCHASER.
IF THE MATERIAL IS NOT AS SPECIFIED, THE ENTIRE BATCH
SHALL BE REJECTED.
IMPORTANT: IF THE ITEM IS MADE FROM MULTIPLE PIECES, THE
PIECES SHALL UNDER NO CIRCUMSTANCES BE GLUED TOGETHER.



ACCEPTANCE INSPECTION INSTRUCTION

CHAR. No.	CROSS REF.	GAUGE NUMBER	MEASURING DESCRIPTION
M101D	A-1	NOTE 1	LAB. REPORT
301	A-5		ELEC. VERNIER
302	C-6		ELEC. VERNIER
303	D-5		ELEC. VERNIER
304	E-4		ELEC. VERNIER
305	E-6		ELEC. VERNIER
306	E-6		ELEC. VERNIER
307	F-5		ELEC. VERNIER
308	F-5		ELEC. VERNIER

Should a Tenderer/Vendor not be able to meet the requirements of this document, it must be declared in writing to the Buying Manager at the time of tendering/receipt of an order.

✓ [✓] [✓] HRC

DO NOT SCALE ALL DIMENSIONS ARE IN mm.		CLASSIFICATION OF CHARACTERISTICS CODING BASED ON DOD-STD 2101 CLASSIFICATION		FINAL ACCEPTANCE SAMPLE FOR VISUAL AND DIMENSIONAL INSPECTION: ACCORDING TO MIL-STD-105 SINGLE NORMAL SAMPLE PLAN: GENERAL INSPECTION G2.	
CRITICAL (C1-C99)		TOTAL		A.Q.L.	
MAJOR A (M101-M199)		1		CRITICAL NOT APPLICABLE	
MAJOR B (M201-M299)		0		MAJOR A 0,025%	
MINOR (301-399)		8		MAJOR B 0,65%	
INCIDENTAL (401-499)		0		MINOR 1,5%	
				INCIDENTAL 4,0%	

MANUFACTURE
DATE: 2023.06.06
COPY NO. 16
ISSUE BY, 1

JOB No.	03/E003/98COM	MATERIAL	SEE NOTE 1	DRAWN	JMC 98-03-09	CHECKED	PS 98-03-09	NEXT ASSY.	05419-98010001-220001
GENERAL TOLERANCES (UNLESS OTHERWISE STATED)				FINALIZED		APPROVED	MGV 98-03-09	DRG No.	05419-98010001-203001
LENGTHS AND DIAMETERS				ANGLES	RADI		REV.		D
0 TO 6	6 TO 30	30 TO 120	120 TO 315	315 TO 1000	1000 TO 2000	2000 TO 4000	4000 AND MORE	0° TO 30°	30° TO 90°
±0,1	±0,2	±0,3	±0,5	±0,8	±1,2	±2,0	±3,0	±30'	±1°
ALL GEOMETRIC TOLERANCES TO BE WITHIN 0,1				PROJECT LEADER		SCREEN DRG. No.		CODE No.	01138002007
								CAD No.	00107780

CARTRIDGE M9624 (BK117)

PROTECTOR TOP

MATERIAL NOTE UPDATED. SEE ECP. 03/E003/11PC

DETAILS

ACHINE

REPLACES DRG No.