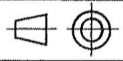


CME 68  
31032-413

ESR No: A00K56

**TRANSNET ENGINEERING GERMISTON**  
**MANUFACTURING PURPOSES**

PROJECTION  
PROEKSIE

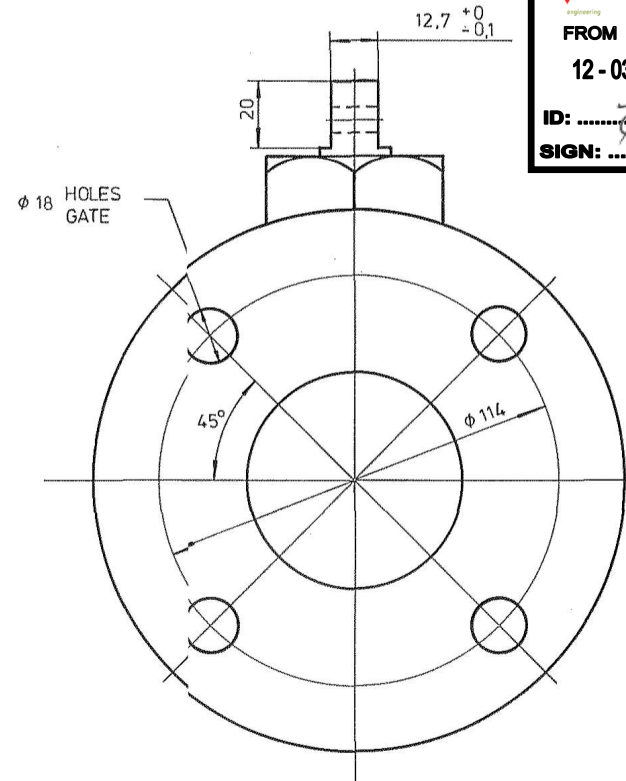
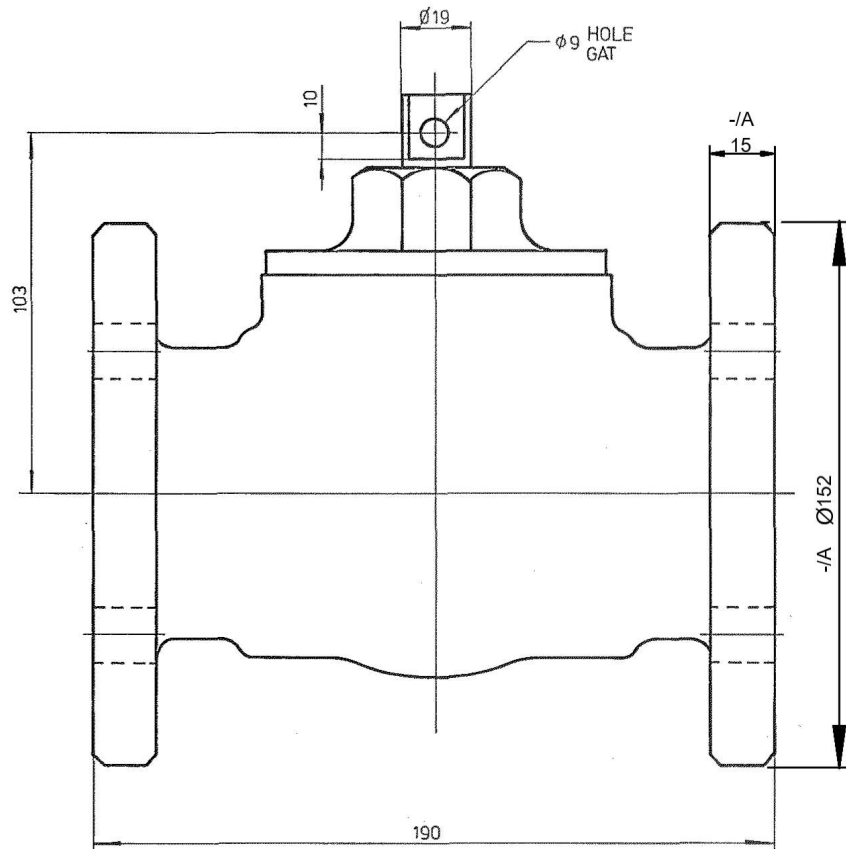


TRANSNET ENGINEERING GERMISTON  
VALIDITY

FROM 12-03-2025 TO 12-04-2025

ID: *[Signature]*

SIGN: *[Signature]*



⊕ BALL VALVE, 50 mm (WITH STAINLESS BALL), WORKING PRESSURE 690 kPa  
BALKLEP, (MET VLEKCRYSTALBAL), WERKDRUK 690 kPa

-/A  
DIMENSIONS ADDED  
ECN0003123  
23/01/2025  
L.M.

*[Signature]*

FOR LIMITS ON UNTOLERANCED DIMENSIONS SEE DRG. No. CME 4092/0-000 (LATEST)  
VIR LIMITE OP AFMETINGS WAT NIE 'N' TOLERANSIE BEIAT NIE, KYK TEK. No. CME 4092/0-000 (JONGSTE)

ASSEMBLY DRG. SAMESTELTEK.	No.	CME 4914 12-000 IT.29	AG/09/02013, IT. 40	W-108 0017 IT.26	CME 194 12-B16, IT.15	DRN.-GET.	P.J.C.
SUPERSEDES/REPLACES DRG. VERVANG TEK.	No.					TCD.-NGT.	H.E.R.
						CKD.-NGS.	D.G.L.
						APPROVED GOEDGEK.	<i>D.G.L.</i>
CLASS OR TYPE KLAS OF TIPE		XB-6,7,8,9				REF. VERW.	17/1/2XB/1
						DATE DATUM	1980-09-09
SEPIA TO M.E. SEPIA AAN M.I.						SCALE SKAAL	N.T.S. N.V.S.

CARRIAGE  
RYTUIG

**S.A.R.-S.A.S.** PRETORIA

VALVE, BALL  
KLEP, BAL-

AMENDMENTS  
WYSIGINGS

MASS  
MASSA

MATERIAL-MATERIAAL

STORES  
MAG.

IT. No.  
**CME 68**  
No. **31032-413**

AMENDMENT  
WYSIGING

A