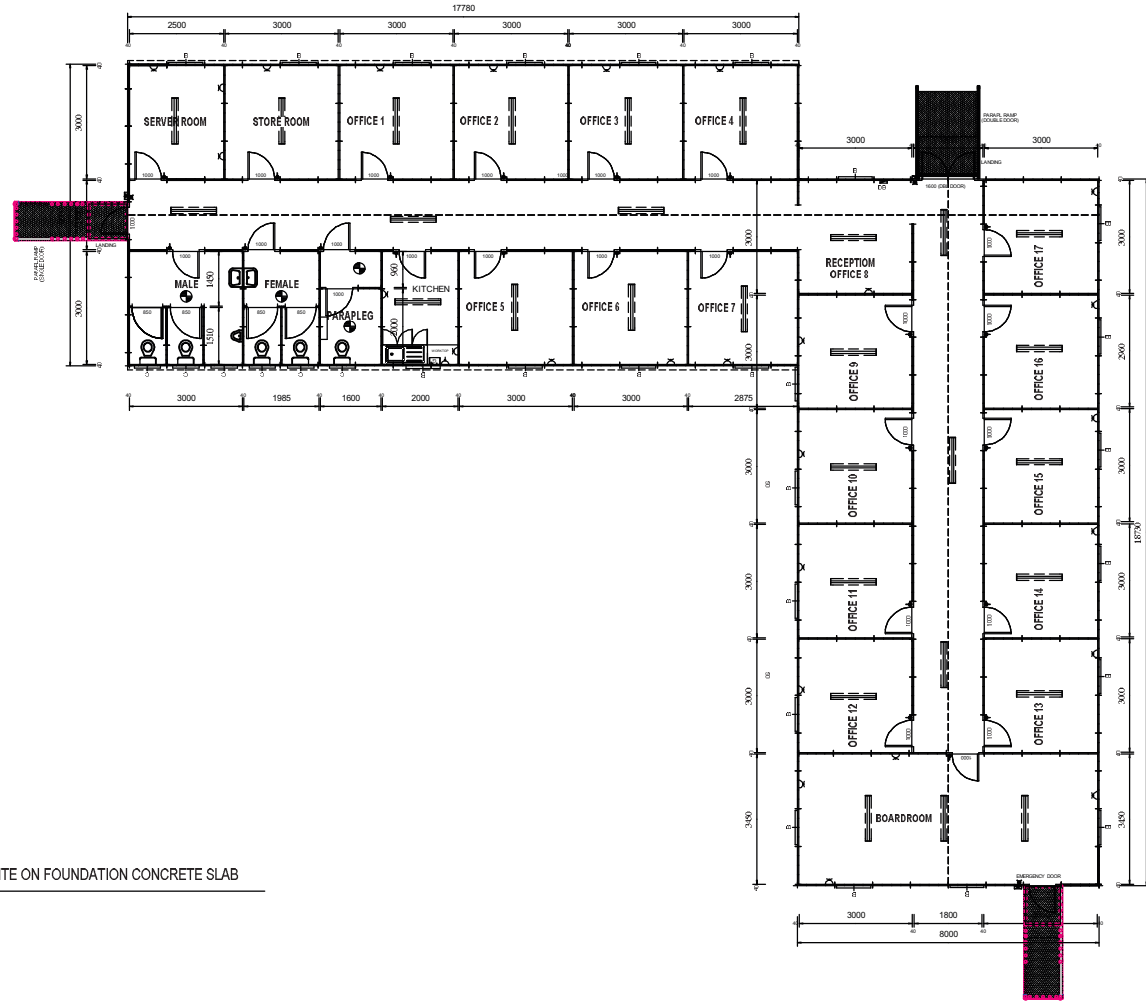


	WINDOWS		DOORS		PLUMBING		DB		LIGHTS		PLUGS		OTHERS		OTHERS	
B	900x900 T-HUNG	23	EXT. DBL. CDK. DOOR	1	GEYSER 250L	1	SURFACE MOUNTED	Y	DBL FLUOR LIGHT 1200	31	LIGHT SWITCH 1-LEV	23	AIRCON POINTS ONLY	20	VINYL SHEETING	0
C	600x600 T-HUNG	6	EXT. SGL. CDK. DOOR	2	PARAPL TOILET C/W WHB	1	EARTH LEAKAGE	Y	EXT LIGHT	2	LIGHT SWITCH 2-LEV	3	JACKING LEGS	0	RAMP & LAND DBL DOOR	1
			INT. SGL. CDK. DOOR	28	WC / PORC TOILET	4	380 V	Y			DBL 16AMP PLUG POINT	27	CERAMIC TILES	Y	RAMP & LAND SGL DOOR	2
					WHB PORC	2							RAIN WATER GOODS PVC ROUND	Y	400 BASE UNIT	1
					URINAL PORC	1							WORK TOP 600	Y	50Ll HYDROBOIL	1
					SINK 1800 S/S	1							800 BASE UNIT	1		



PLEASE NOTE
 EXT & INT - CHROMIUM/BLACK WHITE
 WINDOWS - T-HUNG - EPOXY POWDER COATED WHITE
 DOOR - SET - CHROMIUM/BLACK POWDER COATED DOOR
 HANDLES ELECTRICS - FLUSH MOUNTED WITH PANEL
 FLOOR TO CEILING HEIGHT = 2.4M
 TO BE BUILT ON FOUNDATION CONCRETE SLAB

PLEASE NOTE: TO BE ASSEMBLED ON SITE ON FOUNDATION CONCRETE SLAB



DRAWN BY:	SOLARCUBE
DATE:	06/12/2025
APPROVED:	APPROVED:
CAD:	SALES:

REV:	DATE:	DRAWN BY:	DESCRIPTION:
1			
2			
3			
4			
5			

DRAWING No:	REVISION:
HMPD0001-1	00
TITLE:	MOBILE OFFICE BLOCK
CLIENT:	Ephraim Mogale Local Municipality