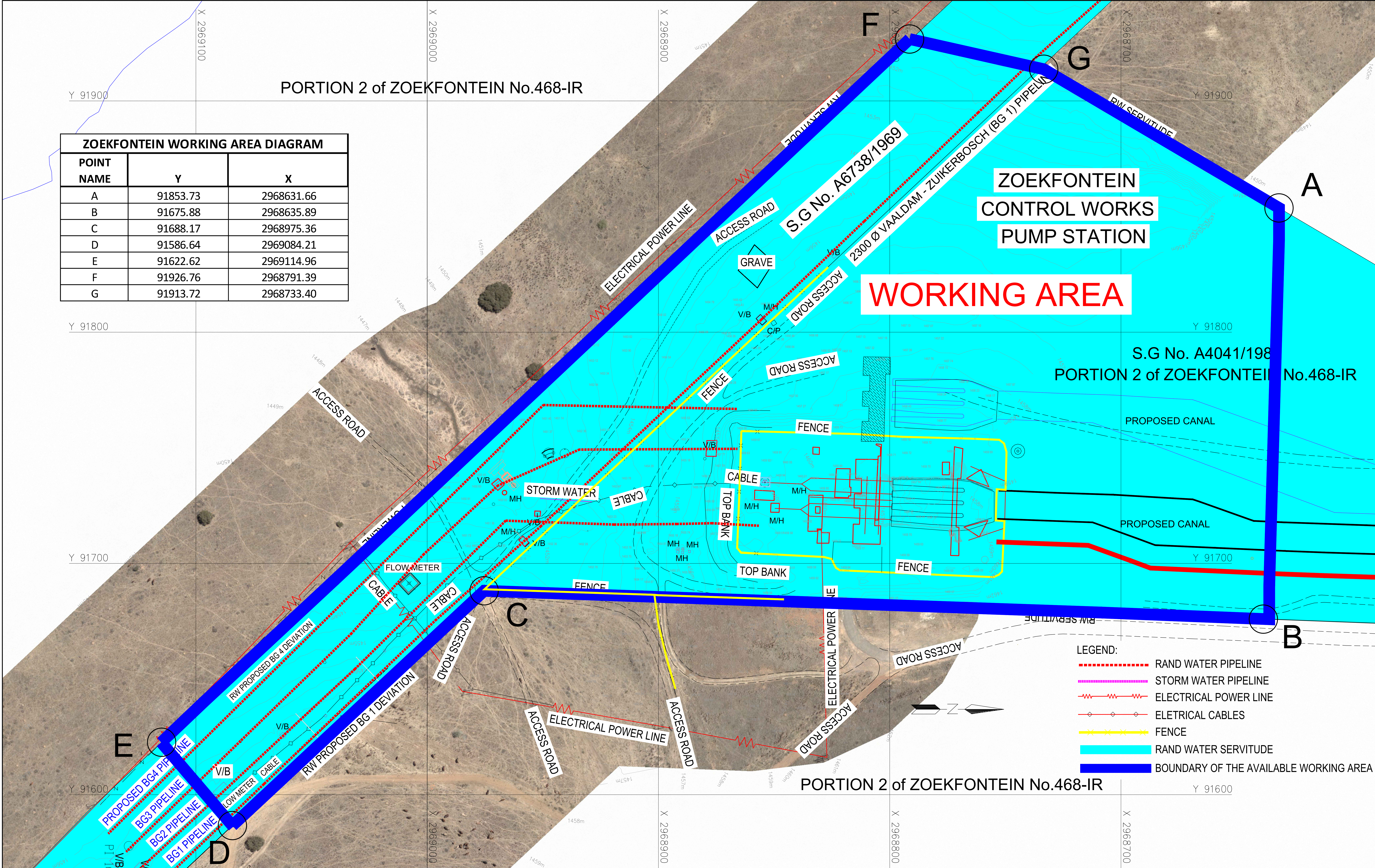


ZOEKFontein WORKING AREA DIAGRAM		
POINT NAME	Y	X
A	91853.73	2968631.66
B	91675.88	2968635.89
C	91688.17	2968975.36
D	91586.64	2969084.21
E	91622.62	2969114.96
F	91926.76	2968791.39
G	91913.72	2968733.40



- LEGEND:
- RAND WATER PIPELINE
 - STORM WATER PIPELINE
 - ELECTRICAL POWER LINE
 - ELETRICAL CABLES
 - FENCE
 - RAND WATER SERVITUDE
 - BOUNDARY OF THE AVAILABLE WORKING AREA

LEGEND

AIR VALVE WITHOUT ACCESS MANNHOLE
AIR VALVE WITH ACCESS MANNHOLE
INLINE SLUICE VALVE
INLINE BUTTERFLY VALVE
SCOUR VALVE
REFLUX VALVE
PIPE JACKING
PIPE BEND REFERENCE MARKER

BEACON (BCN)
PIPE LOCATOR TEST POINT (PLT)
METER
ELECTRIC POLE (EP)
TELEPHONE POLE (TP)
FENCE
SURVEY STATION

CATHODIC PROTECTION LEGEND:
EXISTING CROSS BOND FACILITY
NEW CROSS BOND FACILITY
NEW CP SYSTEM
EXISTING CP SYSTEM
ZINC RIBBON
EARTH MAT

FUTURE WORK:

- FUTURE BG 4 PIPELINE TO BE CONSTRUCTED ON THE WESTERN SIDE OF THE CURRENT SERVITUDE.
- FUTURE CONTROL WORKS TO BE CONSTRUCTED ON THE WESTERN SIDE OF THE EXISTING CONTROL WORKS.

GENERAL NOTES:

- APPLICATION TO BE DONE FOR THE EXTENSION OF THE SERVITUDE TO ACCOMMODATE THE HYDROPOWER GENERATION PLANT, THE ELECTRICAL SUBSTATION BUILDINGS AND THE ACCESS ROADS. THIS IS A DIRECT IMPLICATION OF HAVING TO RELOCATE THE BG1 AS WELL AS THE FUTURE BG4. THERE IS A LIMIT TO THE ALLOWABLE HEIGHT OF THE BUILDINGS TO BE CONSTRUCTED ON THIS SITE.

SURVEY NOTES:

- ALL PIPES ARE 50MM HOUSING/ROOF ON CONTRY LINE OF PIPELINE.
- HORIZONTAL BENDS ARE SQUARE PIPES.
- OVERHEAD ELECTRICAL PIPING - BEWARE OF UNDERGROUND EARTH STRAPS AND CABLES BETWEEN PIPES.
- ENSURE ACCESS TO PROPERTIES ARE AVAILABLE WHERE DRIVEWAYS ARE AFFECTED.
- FOR CONCRETE ENGAGEMENT REFER TO CIVIL DRAWINGS.
- ALL ATTEMPTS ARE UNDERWRITTEN BY THE SURVEYOR TO LOCATE ALL AFFECTED SERVICES ABOVE AND BELOW GROUND. SURFACE FITS OF UNDOUBT IMPORTANCE THAT THE CONTRACTOR TAKE THE NECESSARY PRECAUTIONS WHEN EXCAVATING IN THE VICINITY OF SERVICES.

REVISIONS

No.	Date	Checked	Approved	Description

REFERENCE DRAWINGS

Number	Title

RAND WATER

Box 1127
Johannesburg
2000
Tel: 011 682 0911

© Rand Water All Rights Reserve

SAF No.
Contract No.
Designed By
Drawn By
Surveyed By
Checked By
Date

P.A.M.
D.O.M.
G.MATHUBA
IYAN DAVIDS
20-MAY-2021

Approved
Capacity
Date

ZOEKFontein

CONTROL WORKS

SITE LAYOUT FOR
PORTION 2 of the ZOEKFontein No.468-IR

station
Scale: 500

revision

DRG No.R040367