



## TENDER NO: IDS (E) 22/2025

TENDERS ARE HEREBY INVITED FROM SERVICE PROVIDER/S FOR THE SUPPLY, DELIVERY AND OFF-LOADING OF VARIOUS GALVANIZED STEEL TRAFFIC SIGNAL POLES, ELECTRICITY DISTRIBUTION POLES AND PUBLIC LIGHTING POLES THAT ARE LOCALLY MANUFACTURED WITH A STIPULATED MINIMUM THRESHOLD OF 100% LOCAL PRODUCTION AND CONTENT AT THE MUNICIPAL STORES AT CHAMDOR ON AN AS AND WHEN REQUIRED BASIS FOR A THREE (3) YEARS PERIOD FOR MOGALE CITY LOCAL MUNICIPALITY.

Compulsory Briefing Session will be held on 4 July 2025 at 10:00am at Mayoral Chamber, Civic Centre, Corner Commissioner and Market Street, Krugersdorp, 1740.

No visual compulsory briefing session will be available.

NAME OF BIDDER:  
CENTRAL SUPPLIER  
DATABASE (CSD)

MAAA

TELEPHONE No:

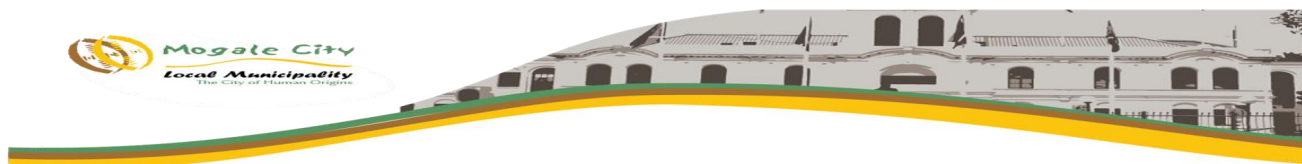
TELEFAX No:

E-MAIL ADDRESS:  
PHYSICAL  
ADDRESS:

JUNE 2025

Issued by:  
Municipal Manager  
Mogale City Local Municipality  
P O Box 94  
**KRUGERSDORP**  
1740

<b>INDEX</b>		
Items	Description	Pages
1.	MBD 1 – Invitation to Bid	3 - 6
2.	Advertisement	7 – 11
3.	MCLM 2% Corporate Social Responsibility	12
4.	MBD 4 – Declaration of Interest	13 – 15
5.	MBD 5 - Declaration of procurement above R10 Million (vat included).	16 – 17
6.	MBD 6.1 – Preference points claim form in terms of the preferential procurement regulations 2022	18 – 30
7.	MBD 6.2 – Declaration certificate for local production and content for designated sectors.	31 - 46
8.	MBD 8 – Bidder's Past Supply Chain Practices	47 – 48
9.	MBD 9 – Certificate of Independent Bid Determination	49 – 50
10.	General Conditions of Contract	51 – 62
11.	Project Specifications and price schedule	63 – 115
12.	Criteria to monitor and evaluate performance of the service provider as per section 27 of supply chain management policy	116
13.	Bid Checklist	117 – 118



**MBD 1**

**PART A  
INVITATION TO BID**

<b>YOU ARE HEREBY INVITED TO BID FOR REQUIREMENTS OF MOGALE CITY LOCAL MUNICIPALITY</b>					
<b>BID NUMBER:</b>	<b>IDS (E) 22/2025</b>	<b>CLOSING DATE:</b>	<b>23 July 2025</b>	<b>CLOSING TIME:</b>	<b>11:00</b>
<b>DESCRIPTION</b>	<b>TENDERS ARE HEREBY INVITED FROM SERVICE PROVIDER/S FOR THE SUPPLY, DELIVERY AND OFF-LOADING OF VARIOUS GALVANIZED STEEL TRAFFIC SIGNAL POLES, ELECTRICITY DISTRIBUTION POLES AND PUBLIC LIGHTING POLES THAT ARE LOCALLY MANUFACTURED WITH A STIPULATED MINIMUM THRESHOLD OF 100% LOCAL PRODUCTION AND CONTENT AT THE MUNICIPAL STORES AT CHAMDOR ON AN AS AND WHEN REQUIRED BASIS FOR A THREE (3) YEARS PERIOD FOR MOGALE CITY LOCAL MUNICIPALITY.</b>				
<b>THE SUCCESSFUL BIDDER WILL BE REQUIRED TO FILL IN AND SIGN A WRITTEN CONTRACT FORM (MBD7).</b>					

BID RESPONSE DOCUMENTS MAY BE DEPOSITED IN THE BID BOX SITUATED AT (STREET ADDRESS)

<b>CNR. COMMISSIONER &amp; MARKET STREET</b>				
<b>CIVIC CENTRE</b>				
<b>MOGALE CITY</b>				
<b>KRUGERSDORP</b>				
<b>1740</b>				
<b>SUPPLIER INFORMATION</b>				
<b>NAME OF BIDDER</b>				
<b>POSTAL ADDRESS</b>				
<b>STREET ADDRESS</b>				
<b>TELEPHONE NUMBER</b>	<b>CODE</b>		<b>NUMBER</b>	

CELLPHONE NUMBER					
FACSIMILE NUMBER	CODE		NUMBER		
E-MAIL ADDRESS					
VAT REGISTRATION NUMBER					
TAX COMPLIANCE STATUS	TCS PIN:		<b>OR</b>	CSD No:	
B-BBEE STATUS LEVEL VERIFICATION CERTIFICATE  [TICK APPLICABLE BOX]	Yes     <input type="checkbox"/> No		B-BBEE STATUS LEVEL SWORN AFFIDAVIT		<input type="checkbox"/> Yes     <input type="checkbox"/> No
<b>[A B-BBEE STATUS LEVEL VERIFICATION CERTIFICATE/ SWORN AFFIDAVIT (FOR EMES &amp; QSEs) MUST BE SUBMITTED IN ORDER TO QUALIFY FOR PREFERENCE POINTS FOR B-BBEE]</b>					

<b>ARE YOU THE ACCREDITED REPRESENTATIVE IN SOUTH AFRICA FOR THE GOODS /SERVICES /WORKS OFFERED?</b>	<input type="checkbox"/> Yes <input type="checkbox"/> No  [IF YES ENCLOSE PROOF]	<b>ARE YOU A FOREIGN BASED SUPPLIER FOR THE GOODS /SERVICES /WORKS OFFERED?</b>	<input type="checkbox"/> Yes <input type="checkbox"/> No  [IF YES, ANSWER PART B:3 ]
<b>TOTAL NUMBER OF ITEMS OFFERED</b>		<b>TOTAL BID PRICE</b>	
<b>SIGNATURE OF BIDDER</b>		<b>DATE</b>	
<b>CAPACITY UNDER WHICH THIS BID IS SIGNED</b>			
<b>BIDDING PROCEDURE ENQUIRIES MAY BE DIRECTED TO:</b>		<b>TECHNICAL CLARIFICATION QUERIES MAY BE DIRECTED TO:</b>	
<b>DEPARTMENT/ DIVISION</b>	Supply Chain Management		
<b>E-MAIL ADDRESS</b>	<a href="mailto:SCMEnquiries@mogalecity.gov.za">SCMEnquiries@mogalecity.gov.za</a>		

**PART B**  
**TERMS AND CONDITIONS FOR BIDDING**

<b>1. BID SUBMISSION:</b>	
1.1. BIDS MUST BE DELIVERED BY THE STIPULATED TIME TO THE CORRECT ADDRESS. LATE BIDS WILL NOT BE ACCEPTED FOR CONSIDERATION.	
1.2. <b>ALL BIDS MUST BE SUBMITTED ON THE OFFICIAL FORMS PROVIDED– (NOT TO BE RE-TYPED) OR ONLINE</b>	
1.3. THIS BID IS SUBJECT TO THE PREFERENTIAL PROCUREMENT POLICY FRAMEWORK ACT AND THE PREFERENTIAL PROCUREMENT REGULATIONS, 2022, THE GENERAL CONDITIONS OF CONTRACT (GCC) AND, IF APPLICABLE, ANY OTHER SPECIAL CONDITIONS OF CONTRACT.	
<b>2. TAX COMPLIANCE REQUIREMENTS</b>	
2.1 BIDDERS MUST ENSURE COMPLIANCE WITH THEIR TAX OBLIGATIONS.	
2.2 BIDDERS ARE REQUIRED TO SUBMIT THEIR UNIQUE PERSONAL IDENTIFICATION NUMBER (PIN) ISSUED BY SARS TO ENABLE THE ORGAN OF STATE TO VIEW THE TAXPAYER'S PROFILE AND TAX STATUS.	
2.3 APPLICATION FOR THE TAX COMPLIANCE STATUS (TCS) CERTIFICATE OR PIN MAY ALSO BE MADE VIA E-FILING. IN ORDER TO USE THIS PROVISION, TAXPAYERS WILL NEED TO REGISTER WITH SARS AS E-FILERS THROUGH THE WEBSITE <a href="http://WWW.SARS.GOV.ZA">WWW.SARS.GOV.ZA</a> .	
2.4 FOREIGN SUPPLIERS MUST COMPLETE THE PRE-AWARD QUESTIONNAIRE IN PART B:3.	
2.5 BIDDERS MAY ALSO SUBMIT A PRINTED TCS CERTIFICATE TOGETHER WITH THE BID.	
2.6 IN BIDS WHERE CONSORTIA / JOINT VENTURES / SUB-CONTRACTORS ARE INVOLVED, EACH PARTY MUST SUBMIT A SEPARATE TCS CERTIFICATE / PIN / CSD NUMBER.	
2.7 WHERE NO TCS IS AVAILABLE BUT THE BIDDER IS REGISTERED ON THE CENTRAL SUPPLIER DATABASE (CSD), A CSD NUMBER MUST BE PROVIDED.	
<b>3. QUESTIONNAIRE TO BIDDING FOREIGN SUPPLIERS</b>	
3.1. IS THE ENTITY A RESIDENT OF THE REPUBLIC OF SOUTH AFRICA (RSA)?	<input type="checkbox"/> YES <input type="checkbox"/> NO
3.2. DOES THE ENTITY HAVE A BRANCH IN THE RSA?	<input type="checkbox"/> YES <input type="checkbox"/> NO
3.3. DOES THE ENTITY HAVE A PERMANENT ESTABLISHMENT IN THE RSA?	<input type="checkbox"/> YES <input type="checkbox"/> NO
3.4. DOES THE ENTITY HAVE ANY SOURCE OF INCOME IN THE RSA?	<input type="checkbox"/> YES <input type="checkbox"/> NO
3.5. IS THE ENTITY LIABLE IN THE RSA FOR ANY FORM OF TAXATION?	<input type="checkbox"/> YES <input type="checkbox"/> NO
<b>IF THE ANSWER IS "NO" TO ALL OF THE ABOVE, THEN IT IS NOT A REQUIREMENT TO REGISTER FOR A TAX COMPLIANCE STATUS SYSTEM PIN CODE FROM THE SOUTH AFRICAN REVENUE SERVICE (SARS) AND IF NOT REGISTER AS PER 2.3 ABOVE.</b>	

**NB: FAILURE TO PROVIDE ANY OF THE ABOVE PARTICULARS MAY RENDER THE BID INVALID.**

**NO BIDS WILL BE CONSIDERED FROM PERSONS IN THE SERVICE OF THE STATE.**

SIGNATURE OF BIDDER: .....

CAPACITY UNDER WHICH THIS BID IS SIGNED: .....

DATE: .....

ADVERTISED IN: The Star  
PUBLISHING DATE: Friday, 20 June 2025  
TENDER NO: IDS (E) 22/2025

### MOGALE CITY LOCAL MUNICIPALITY

Tenders are hereby invited for the following Office: Infrastructure Development Services: section: Energy Services.

#### **TENDER NO: IDS (E) 22/2025**

**TENDERS ARE HEREBY INVITED FROM SERVICE PROVIDER/S FOR THE SUPPLY, DELIVERY AND OFF-LOADING OF VARIOUS GALVANIZED STEEL TRAFFIC SIGNAL POLES, ELECTRICITY DISTRIBUTION POLES AND PUBLIC LIGHTING POLES THAT ARE LOCALLY MANUFACTURED WITH A STIPULATED MINIMUM THRESHOLD OF 100% LOCAL PRODUCTION AND CONTENT AT THE MUNICIPAL STORES AT CHAMDOR ON AN AS AND WHEN REQUIRED BASIS FOR A THREE (3) YEARS PERIOD FOR MOGALE CITY LOCAL MUNICIPALITY.**

**Compulsory Briefing Session will be held on 04 July 2025 at 10:00am at Mayoral Chamber, Civic Centre, Corner Commissioner and Market Street, Krugersdorp, 1740.**

**No visual compulsory briefing session will be available.**

#### **Adjudication: 80/20**

Tenders will be evaluated using Functionality evaluation criteria of **60** points of which the service provider is required to score a minimum of **30** points in order to be considered for further evaluation. Tenders will be evaluated using 80/20 preference point system which awards 80 points for Price and 20 points for Specific Goals accordance with PPPFA 2022 Goals as per table below:

The specific goals allocated points in terms of this tender	Number of points allocated (90/10 system) (To be completed by the organ of state)	Number of points allocated (80/20 system) (To be completed by the organ of state)	Number of points claimed (90/10 system) (To be completed by the tenderer)	Number of points claimed (80/20 system) (To be completed by the tenderer)
Within the boundaries of the Municipality (Municipal account/ lease agreement/rental statement will be utilized to verify area of jurisdiction of bidder)	X	10	X	
Outside the boundaries of the Municipality, but within the West Rand District Municipality (Municipal account/ lease agreement/rental statement will be utilized to verify area of jurisdiction of bidder)	X	6	X	
Within the boundaries of Gauteng Province	X	4	x	

(Municipal account/ lease agreement/rental statement will be utilized to verify area of jurisdiction of bidder)				
Outside the boundaries of Gauteng Province (Municipal account/ lease agreement/rental statement will be utilized to verify area of jurisdiction of bidder)	X	0	X	
Youth enterprise (enterprise owned by persons younger than 35 years). (Central Supplier Database will be utilized to verify youth-enterprise points of bidder)	X	5	X	
Gender (woman owned enterprises). (Central Supplier Database will be utilized to verify women-owned enterprise points of bidder)	X	5	X	

**Documents Collection:** Documents can be downloaded from the e-tender portal at [www.etenders.gov.za](http://www.etenders.gov.za) or [www.mogalecity.gov.za](http://www.mogalecity.gov.za).

Technical Enquiries: [scmenquiries@mogalecity.gov.za](mailto:scmenquiries@mogalecity.gov.za)

**Documents available:** As from **20 June 2025** on [www.etenders.gov.za](http://www.etenders.gov.za) or [www.mogalecity.gov.za](http://www.mogalecity.gov.za)

**Closing date: 23 July 2025**

**Time: 11:00**

**Bid Box**

Venue: Bid boxes are situated at the reception desk of the Supply Chain Management Unit, situated on the upper level of the West Wing of the Mogale City Civic Centre, Corner Commissioner and Market Streets in Krugersdorp.

**A. MANDATORY DOCUMENTS  
(IF NOT PROVIDED, THE BID WILL BE INSTANTLY DISQUALIFIED)**

1. Bidders must complete and sign compulsory briefing session attendance register. No bids will be considered from bidders who did not attend the Compulsory Briefing Session and completed the attendance register.
2. Completed and Signed Schedule of Pricing as issued in the document. In the event of a mistake having been made on the pricing schedule, it shall be crossed out in ink and be accompanied by initialing each and every alteration. The Municipality reserves the right to reject the tender if corrections are not made in accordance with the above.
3. Authority of Signatory must be completed and signed in case of a business not sole proprietor or one-person business or board of director's resolution authorizing signature to sign off the bid documents.
4. Mogale City Local Municipality will not accept any bid document with missing pages.  
**FAILURE TO ADHERE TO ANY OF THE ABOVE WILL RESULT IN THE BID NOT BEING FURTHER EVALUATED.**



**B. ESSENTIAL DOCUMENTS**  
**(NO AWARD WILL BE MADE IF ANY OF THE INFORMATION/DOCUMENTATION LISTED BELOW IS NOT COMPLIED WITH OR SUBMITTED).**

5. Completed and signed Municipal Bidding Documents:
  - 5.1 MBD 1: Invitation to tender.
  - 5.2 MBD 4: Declaration of Interest.
  - 5.3 MBD 5: Declaration of procurement above R10 Million (vat included).
  - 5.4 MBD 6.1: Preferential Points.
  - 5.5 MBD 6.2: Declaration certificate for local production and content for designated sectors.
  - 5.6 MBD 8: Declaration of bidders past supply chain management practices.
  - 5.7 MBD 9: Certificate of independent bid determination.

**NOTE:** The above documents must be submitted on the official and original forms of Mogale City and must not be re-typed or scanned or completed electronically i.e. must not be typed in. They must be completed in black ink, handwritten. Bids completed in pencil or any erasable pen will be regarded as invalid.

6. Submit Central Supplier Database (CSD) Registration Report or Summary Report.

**MUNICIPAL RATES AND TAXES OR MUNICIPAL SERVICE CHARGES**

7. The bidding entity and its director(s) must submit Municipal Rates and Taxes account which is not older than three (3) months / ninety (90) days in arrears at the time of the closing date.
8. If the bidding entity and its director(s) does not have a Municipal Rates and Taxes account, it must submit a Municipal Service Charges Statement (water statement or electricity statement or refuse removal statement or sewerage statement).
9. If the bidding entity and its director(s) does not own a property it must submit a valid lease agreement which has the address of the business or Rental Statement which is in the name of the business or director(s).
10. If the Bidding Entity and its director(s) operates from Informal settlement and does not have a Municipal Rates Account,
  - 10.1. The bidding entity and its director(s) must submit Confirmation on Municipality / Metro letterhead signed and stamped by the ward Councillor or delegate/tribal authority with contact details which is not older than three (3) months.
11. If the bidding entity and its director(s) operates from parents' place or any other place and is not responsible for Municipal account / Services.
  - 11.1. The bidding entity and its director(s) must submit an original Sworn Affidavit by the property owner.
12. If the bidding entity and its director(s) is in the process of acquiring new property, which property has not yet been transferred to its name, a letter from the conveyancing attorney(s) must be submitted.
13. If the bidding entity and its director(s) submit a Municipal Account which is in the name of the Trust Account, and original Sworn Affidavit from The Trustee(s) must be furnished explaining that factor/relationship.
14. If the bidding entity's director(s) submit a Municipal Account in the name of the other spouse, an original Sworn Affidavit explaining the fact must be submitted.

15. Copies of director's ID.
16. Bids must be submitted in original document.

<p><b>C. <u>TENDER CONDITIONS</u></b> <b>(FAILURE TO COMPLY WITH THESE CONDITIONS SHALL RESULT IN DISQUALIFICATION)</b></p>
---

17. All suppliers of good & services are urged to register in the National Treasury web based Central Suppliers Database with Effect from 1 July 2016.
18. As per National Treasury Instruction No.4 A of 2016/2017 National Treasury Supplier Database, organs of state must ensure that suppliers awarded business with the State are registered on the CSD prior to award letter/purchase order/signed contract being issued.
19. Bids by joint ventures are to be accompanied by the Document Formation of the joint venture, duly registered and authenticated by a Notary Public or other official deputized to witness sworn statements. This document must define precisely the conditions under which the joint venture will function, the period for which it will function, the persons authorized to represent and obligate it, the address for correspondence, the participation of several firms forming the joint venture and any information necessary to permit a full appraisal of its functioning, including a clause to the effect that the members of the joint venture are jointly and severely bound.
20. No electronic signature will be accepted in the bidding document. The bidder's signature must always be signed by hand in black ink.
21. No late tender will be accepted.
22. Telefax or e-mail bids will not be accepted.
23. All bids must be submitted on the official and original forms and must not be re-typed or typed or scanned. Bids must only be submitted on the bid documents as provided by Mogale City Local Municipality.
24. Bids must be completed in black ink, handwritten and must not be typed.
25. The use of tipp-ex is not allowed on the bid documents.
26. Bids completed in pencil will be regarded as invalid bids.
27. No page(s) must be removed from the original tender document.
28. Requirements for sealing, addressing, delivery, opening and assessment of bids are stated in the tender document.
29. The lowest or any tender will not necessarily be accepted, and Mogale City reserves the right to accept a tender in whole or in part.
30. The Municipality reserves the right to appoint and not to appoint.
31. The validity period for this tender is one hundred and twenty (120) days.

32. A Corporate Social Responsibility contribution of two (2) percent inclusive of 15% VAT will be levied on all companies/ service providers appointed as successful bidders if such company(s)/service provider(s) are not based in the area of jurisdiction of Mogale City.
33. The Municipality reserve the right to negotiate a fair market related price with recommended bidders after a competitive bidding process or price quotation.
34. All tender prices must be inclusive of VAT for all registered VAT vendors.

**REGISTRATION AS A VAT VENDOR**

- 34.1 Non-VAT vendors do not have to include VAT in their bid prices, however they must submit bids for contracts that would, if successful, take their annual turnover above the threshold of R 1 million must include VAT in their price quoted and must therefore immediately upon award of the contract, register with the South African Revenue Service (SARS) as VAT vendors.
- 34.2 The award of contract would be (for non-VAT vendors who included VAT in their prices) conditional pending the successful bidder submitting proof of registration as VAT vendor with SARS within 21 days of award.
- 34.3 In all instances where the bidder has excluded VAT from the prices quoted, if the bidder is successful, the letter of appointment will clearly state that the price at which the contract is awarded is exclusive of VAT and that VAT will not be added on at any stage after the contract has been signed.
- 34.4 The successful bidder will have to absorb the adverse financial implications of not including VAT in the price quoted.

35. All bid prices must be in RSA currency and inclusive of Value Added Tax (VAT).
36. Bids will be opened immediately after the closing date and time in a venue to be indicated.
37. No bids will be accepted from persons in the service of state as it is defined in the Municipal Finance Management Act and Regulations.
38. The Supply Chain Management Policy of Mogale City Local Municipality allow persons aggrieved by decisions or actions taken by the municipality in the implementation of its supply chain management system, to lodge within fourteen (14) days of the decision or action a written objection or complaint to the municipality against the decision or action.
39. The Municipality reserves the right to appoint more than one service provider/s.
40. Tender documents may be downloaded from e-tender portal at [www.etenders.gov.za](http://www.etenders.gov.za) as well as [www.mogalecity.gov.za](http://www.mogalecity.gov.za).

**OFFICE OF THE MUNICIPAL MANAGER**



## T2.2.4 MCLM 2% CORPORATE SOCIAL RESPONSIBILITY

### Mogale City Corporate Social Responsibility

In terms of Mogale City Corporate Responsibility, non-Mogale City based Services Providers will contribute two (2) percent of the Contract value to Mogale City.

Please provide your registered address: .....

.....

.....

.....

Please indicate if you are a Mogale based:

YES	NO
-----	----

If not Mogale City based, a person duly authorized by the bidder must complete and sign the declaration herewith in detail.

### Declaration by Bider

I, the undersigned hereby declare and confirm that we accept the contribution towards the Mogale City Corporate Social Responsibility, by the deduction of two percent (2%) on all payment made.

Signed

Date

Name

Position

Bidding  
Entity



## MBD 4

### DECLARATION OF INTEREST

1. No bid will be accepted from persons in the service of the state<sup>1</sup>.
2. Any person, having a kinship with persons in the service of the state, including a blood relationship, may make an offer or offers in terms of this invitation to bid. In view of possible allegations of favouritism, should the resulting bid, or part thereof, be awarded to persons connected with or related to persons in service of the state, it is required that the bidder or their authorised representative declare their position in relation to the evaluating/adjudging authority.
- 3 **In order to give effect to the above, the following questionnaire must be completed and submitted with the bid.**

3.1 Full Name of bidder or his or her representative:.....

3.2 Identity Number: .....

3.3 Position occupied in the Company (director, trustee, shareholder<sup>2</sup>):.....

3.4 Company Registration Number: .....

3.5 Tax Reference Number:.....

3.6 VAT Registration Number: .....

3.7 The names of all directors / trustees / shareholders members, their individual identity numbers and state employee numbers must be indicated in paragraph 4 below.

3.8 Are you presently in the service of the state? **YES / NO**

3.8.1 If yes, furnish particulars. ....

.....

<sup>1</sup>MSCM Regulations: "in the service of the state" means to be –

- (a) a member of –
  - (i) any municipal council;
  - (ii) any provincial legislature; or
  - (iii) the national Assembly or the national Council of provinces;
- (b) a member of the board of directors of any municipal entity;
- (c) an official of any municipality or municipal entity;
- (d) an employee of any national or provincial department, national or provincial public entity or constitutional institution within the meaning of the Public Finance Management Act, 1999 (Act No.1 of 1999);
- (e) a member of the accounting authority of any national or provincial public entity; or

(f) an employee of Parliament or a provincial legislature.

<sup>2</sup> Shareholder” means a person who owns shares in the company and is actively involved in the management of the company or business and exercises control over the company.

3.9 Have you been in the service of the state for the past twelve months? ..... **YES / NO**

3.9.1 If yes, furnish particulars.....

3.10 Do you have any relationship (family, friend, other) with persons in the service of the state and who may be involved with the evaluation and or adjudication of this bid? ..... **YES / NO**

3.10.1 If yes, furnish particulars.

.....  
.....

3.11 Are you, aware of any relationship (family, friend, other) between any other bidder and any persons in the service of the state who may be involved with the evaluation and or adjudication of this bid? ..... **YES / NO**

3.11.1 If yes, furnish particulars

.....  
.....

3.12 Are any of the company's directors, trustees, managers, principle shareholders or stakeholders in service of the state? ..... **YES / NO**

3.12.1 If yes, furnish particulars.

.....  
.....

3.13 Are any spouse, child or parent of the company's directors trustees, managers, principle shareholders or stakeholders in service of the state? ..... **YES / NO**

3.13.1 If yes, furnish particulars.

.....  
.....

3.14 Do you or any of the directors, trustees, managers, principle shareholders, or stakeholders of this company have any interest in any other related companies or business whether or not they are bidding for this contract. ..... **YES / NO**

3.14.1 If yes, furnish particulars:

.....  
.....

4. Full details of directors / trustees / members / shareholders.

Full Name	Identity Number	State Employee Number

.....  
**Signature**

.....  
**Date**

.....  
**Capacity**

.....  
**Name of Bidder**



**MBD 5**

**DECLARATION OF PROCUREMENT ABOVE R10 MILLION (VAT INCLUDED)**

**FOR ALL PROCUREMENT EXPECTED TO EXCEED R10 MILLION (VAT INCLUDED),  
BIDDERS MUST COMPLETE THE FOLLOWING QUESTIONNAIRE:**

1 Are you by law required to prepare annual financial statements for auditing?

1.1 if yes, submit audited annual financial statements for  
the past three years or since the date of establishment  
if established during the past three years.

.....

**YES/NO**

.....

.....

2 Do you have any outstanding undisputed commitments  
for municipal services towards a municipality or any  
other service provider in respect of which payment is  
overdue for more than 30 days?

**YES/NO**

2.1 If no, this serves to certify that the bidder has no  
undisputed commitments for municipal services towards  
any municipality for more than three months or other  
service provider in respect of which payment is overdue  
for more than 30 days.

2.2 If yes, provide particulars.

.....

.....

.....

3 Has any contract been awarded to you by organ of  
state during the past five years, including particulars of  
any material non-compliance or dispute concerning the  
execution of such contract?

**YES/NO**

3.1 if yes, furnish

.....

.....

4 Will any portion of goods or services be sourced from  
outside the Republic, if so, what portion and whether



any portion of payment from the municipality /  
municipal entity is expected to be transferred out of the  
Republic?

**YES/NO**

4.1 If yes, furnish particulars

.....  
.....

**CERTIFICATION**

**I, THE UNDERSIGNED (NAME) .....**

**CERTIFY THAT THE INFORMATION FURNISHED ON THIS DECLARATION FORM IS  
CORRECT.**

**I ACCEPT THAT THE STATE MAY ACT AGAINST ME SHOULD THIS DECLARATION PROVE  
TO BE FALSE.**

.....  
Signature

.....  
Date

.....  
Position

.....  
Name of Bidder



**MBD 6.1**

## **MOGALE CITY LOCAL MUNICIPALITY**

### **PREFERENCE POINTS CLAIM FORM IN TERMS OF THE PREFERENTIAL PROCUREMENT REGULATIONS 2022**

This preference form must form part of all bidders invited. It contains general information and serves as a claim form for preference points for specific goals.

**NB: BEFORE COMPLETING THIS FORM, BIDDERS MUST STUDY THE GENERAL CONDITIONS, DEFINITIONS AND DIRECTIVES APPLICABLE IN RESPECT OF THE BID AND PREFERENTIAL PROCUREMENT REGULATIONS, 2022**

#### **1. GENERAL CONDITIONS**

1.1 The following preference point systems are applicable to invitations to bid:

- the 80/20 system for requirements with a Rand value of up to R50 000 000 (all applicable taxes included); and
- the 90/10 system for requirements with a Rand value above R50 000 000 (all applicable taxes included).

1.2 The applicable preference point system for this bid is the 80/20 preference point system.

1.3 Points for this bid (even in the case of a bid for income-generating contracts) shall be awarded for:

- (a) Price; and
- (b) Specific Goals.

1.4 The maximum points for this bid are allocated as follows:

	<b>POINTS</b>
<b>PRICE</b>	<b>80</b>
<b>SPECIFIC GOALS</b>	<b>20</b>
<b>TOTAL POINTS FOR PRICE AND SPECIFIC GOALS</b>	<b>100</b>

1.5 Failure on the part of a bidder to submit proof or documentation required in terms of this bid to claim points for specific goals with the bidder, will be interpreted to mean that preference points for specific goals are not claimed.

1.6 The organ of state reserves the right to require of a bidder, either before a bid is adjudicated or at any time subsequently, to substantiate any claim in regard to preferences, in any manner required by the organ of state.

## 2. DEFINITIONS

- (a) **“bid”** means a written offer in the form determined by an organ of state in response to an invitation to provide goods or services through price quotations, competitive bidding process or any other method envisaged in legislation;
- (b) **“price”** means an amount of money bid for goods or services, and includes all applicable taxes less all unconditional discounts;
- (c) **“rand value”** means the total estimated value of a contract in Rand, calculated at the time of bid invitation, and includes all applicable taxes;
- (d) **“bid for income-generating contracts”** means a written offer in the form determined by an organ of state in response to an invitation for the origination of income-generating contracts through any method envisaged in legislation that will result in a legal agreement between the organ of state and a third party that produces revenue for the organ of state, and includes, but is not limited to, leasing and disposal of assets and concession contracts, excluding direct sales and disposal of assets through public auctions; and
- (e) **“the Act”** means the Preferential Procurement Policy Framework Act, 2000 (Act No. 5 of 2000).
- (f) **“comparative price”** means the price after the factors of a non-firm price and all unconditional discounts that can be utilized have been taken into consideration;
- (g) **“consortium or joint venture”** means an association of person for the purpose of combining their expertise, property, capital, efforts, skill and knowledge in an activity for the execution of a contract;
- (h) **“contact”** means the agreement that results from the acceptance of a bid by an organ of state;
- (i) **“EME”** means an Exempted Micro Enterprise as defined by Codes of Good Practice issued in terms of section 9 (1) of the Broad Based Black Economic Empowerment Act, 2003 (Act No. 53 of 2003);
- (j) **“Firm price”** means the price that is only subject to adjustments in accordance with the actual increase or decrease resulting from the change, imposition, or abolition of customs or excise duty and any other duty, levy, or tax, which, in terms of the law or regulation, is binding on the contractor and demonstrably has an influence on the price of any supplies, or the rendering costs of any service, the execution of the contract;
- (k) **“functionality”** means the measurement according to predetermined norms, as set out in the bid documents, of a service or commodity that is designed to be practical and useful, working or operating, taking into account, among other factors, the quality, reliability, viability and durability of a service and the technical capacity and ability of a bidder;
- (l) **“non-firm prices”** means all prices other than “firm” prices;
- (m) **“person”** includes a juristic person;
- (n) **“QSE”** means a Qualifying Small Enterprise as defined by Codes of Good Practice issued in terms of section 9 (1) of the Broad- Based Black Economic Empowerment Act, 2003 (Act No. 53 of 2003)
- (o) **“rand value”** means the total estimated value of a contract in South African currency, calculated at the time of the bid invitations, and includes all applicable taxes and excise duties;
- (p) **“sub-contract”** means the primary contractor’s assigning, leasing, making out work to, or employing, another person to] support such primary contractor in the execution of part of a project in terms of the contract
- (q) **“total revenue”** bears the same meaning assigned to this expression in the Codes of Good Practice on Black Economic Empowerment, issued in terms of section 9 (1) of the Broad-Based Economic Empowerment Act and promulgated in the Government Gazzette on 9 February 2007;
- (r) **“trust”** means the arrangement through which the property of one person is made over or bequeathed to a trustee to administer such property for the benefit of another person.

### 3. FORMULAE FOR PROCUREMENT OF GOODS AND SERVICES

#### 3.1 POINTS AWARDED FOR PRICE

##### 3.1.1 THE 80/20 OR 90/10 PREFERENCE POINT SYSTEMS

A maximum of 80 or 90 points is allocated for price on the following basis:

**80/20**

**or**

**90/10**

$$Ps = 80 \left( 1 - \frac{Pt - P_{min}}{P_{min}} \right) \text{ or } Ps = 90 \left( 1 - \frac{Pt - P_{min}}{P_{min}} \right)$$

Where

Ps = Points scored for price of bid under consideration

Pt = Price of bid under consideration

Pmin = Price of lowest acceptable bid

#### 3.2 FORMULAE FOR DISPOSAL OR LEASING OF STATE ASSETS AND INCOME GENERATING PROCUREMENT

##### 3.2.1. POINTS AWARDED FOR PRICE

A maximum of 80 or 90 points is allocated for price on the following basis:

**80/20**

**or**

**90/10**

$$Ps = 80 \left( 1 + \frac{Pt - P_{max}}{P_{max}} \right) \text{ or } Ps = 90 \left( 1 + \frac{Pt - P_{max}}{P_{max}} \right)$$

Where

Ps = Points scored for price of tender under consideration

Pt = Price of tender under consideration

Pmax = Price of highest acceptable tender

### 4 POINTS AWARDED FOR SPECIFIC GOALS

4.1 In terms of Regulation 4(2); 5(2); 6(2) and 7(2) of the Preferential Procurement Regulations, preference points must be awarded for specific goals stated in the bid. For the purposes of this bid the bidder will be allocated points based on the goals stated in table 1 below as may be supported by proof/ documentation stated in the conditions of this bid:

4.2 In cases where organs of state intend to use Regulation 3(2) of the Regulations, which states that, if it is unclear whether the 80/20 or 90/10 preference point system applies, an organ of state must, in the bid documents, stipulate in the case of—

- (a) an invitation for bid for income-generating contracts, that either the 80/20 or 90/10 preference point system will apply and that the highest acceptable bid will be used to determine the applicable preference point system; or

(b) any other invitation for bid, that either the 80/20 or 90/10 preference point system will apply and that the lowest acceptable bid will be used to determine the applicable preference point system,

then the organ of state must indicate the points allocated for specific goals for both the 90/10 and 80/20 preference point system.

**Table 1: Specific goals for the bid and points claimed are indicated per the table below.**

**Note to bidders: The bidder must indicate how they claim points for each preference point system.)**

The specific goals allocated points in terms of this tender	Number of points allocated (90/10 system) (To be completed by the organ of state)	Number of points allocated (80/20 system) (To be completed by the organ of state)	Number of points claimed (90/10 system) (To be completed by the tenderer)	Number of points claimed (80/20 system) (To be completed by the tenderer)
Within the boundaries of the Municipality (Municipal account/ lease agreement/rental statement will be utilized to verify area of jurisdiction of bidder)	X	10	x	
Outside the boundaries of the Municipality, but within the West Rand District Municipality (Municipal account/ lease agreement/rental statement will be utilized to verify area of jurisdiction of bidder)	X	6	x	
Within the boundaries of Gauteng Province (Municipal account/ lease agreement/rental statement will be utilized to verify area of jurisdiction of bidder)	X	4	x	
Outside the boundaries of Gauteng Province (Municipal account/ lease agreement/rental statement will be utilized to verify area of jurisdiction of bidder)	X	0	x	
Youth enterprise (enterprise owned by persons younger than 35 years). (Central Supplier Database will be utilized to verify youth-enterprise points of bidder)	X	5	x	
Gender (woman owned enterprises). (Central Supplier Database will be utilized to verify women-owned enterprise points of bidder)	X	5	x	

## 5 DECLARATION WITH REGARD TO COMPANY/FIRM

5.1 Name of company/firm: .....

5.2 VAT registration number: .....

5.3 Company registration number: .....

### 5.4 TYPE OF COMPANY/ FIRM

- ☐ Partnership/Joint Venture / Consortium
- ☐ One person business/sole propriety
- ☐ Close corporation
- ☐ Company
- ☐ (Pty) Limited

[TICK APPLICABLE BOX]

### 5.5 DESCRIBE PRINCIPAL BUSINESS ACTIVITIES

.....  
.....

### 5.6 COMPANY CLASSIFICATION

- ☐ Manufacturer
- ☐ Supplier
- ☐ Professional service provider
- ☐ Other service providers, e.g. transporter, etc.

[TICK APPLICABLE BOX]

### 5.7 MUNICIPAL INFORMATION

**Municipality where business is situated:** .....

**Registered Account Number:** .....

**Stand Number:**.....

5.8 Total number of years the company/firm has been in business:.....

5.9 I/we, the undersigned, who is / are duly authorised to do so on behalf of the company/firm, certify that the points claimed, based on the B-BBE status level of contribution indicated in paragraph 7 of the foregoing certificate, qualifies the company/ firm for the preference(s) shown and I / we acknowledge that:

- i) The information furnished is true and correct;
- ii) The preference points claimed are in accordance with the General Conditions as indicated in paragraph 1 of this form;
- iii) In the event of a contract being awarded as a result of points claimed as shown in paragraph 7, the contractor may be required to furnish documentary proof to the satisfaction of the purchaser that the claims are correct;
- iv) If the B-BBEE status level of contribution has been claimed or obtained on a fraudulent basis or any of the conditions of contract have not been fulfilled, the purchaser may, in addition to any other remedy it may have –
  - (a) disqualify the person from the bidding process;

- (b) recover costs, losses or damages it has incurred or suffered as a result of that person's conduct;
- (c) cancel the contract and claim any damages which it has suffered as a result of having to make less favourable arrangements due to such cancellation;
- (d) restrict the bidder or contractor, its shareholders and directors, or only the shareholders and directors who acted on a fraudulent basis, from obtaining business from any organ of state for a period not exceeding 10 years, after the *audi alteram partem* (hear the other side) rule has been applied; and
- (e) forward the matter for criminal prosecution.

## 6 Previous experience

Provide the following information on relevant previous experience (indicate specifically projects of similar or larger size and/or which is similar with regard to type of work).

Description	Value (R, VAT excluded)	Year(s) executed	Reference		
			Name	Organization	Tel no



## 6.2. Staffing Profile

Provide information on key staff you intend utilizing on this contract, should it be awarded to you.

Name	Position in your organization	Qualifications	Experience

**7 Infrastructure and resources available to execute this contract**

**7.1 Physical facilities**

Description	Address	Area (m <sup>2</sup> )

**7.2 Plant and equipment**

Description: Plant and equipment owned (or to be rented)	Number of units

**7.3 List of shareholders by Name, Position, Identity number, Citizenship, HDI status and ownership as relevant.**

<b>Name</b>	<b>Date/Position Occupied in Enterprise</b>	<b>ID Number (please attach copies of ID's</b>	<b>Date RSA Citizenship obtained</b>	<b>HDI</b>	<b>Women</b>	<b>Disabled</b>	<b>Youth (person not older than 35 years of age)</b>	<b>% of business/ enterprise owned</b>
							<b>Total</b>	<b>100%</b>

**7.4 List of shareholders by Name, percentage (%) of business/enterprise owned, residential address.**

<b>Full Name</b>	<b>Identity (ID) Number (please attached copies of ID's)</b>	<b>% of business/enterprise owned</b>	<b>Residential address</b>

## 8 AUTHORITY FOR SIGNATORY

Please note that the sole proprietors or “one person business” are not required to submit an official and duly signed authority of signatory.

Signatories for close corporations and companies shall confirm their authority by signing on behalf of the company/firm **by attaching to this page** a duly signed and dated copy of the relevant resolution of their members or their board of directors, as the case may be.

**An example for a company is shown below:**

Printed on company letterhead:

“ By resolution of the board of directors passed on \_\_\_\_\_20\_\_\_\_\_

Mr/Ms \_\_\_\_\_

has been duly authorized to sign all documents in connection with the bid for

Bid \_\_\_\_\_ No \_\_\_\_\_

and any Contract, which may arise there from on behalf of

\_\_\_\_\_  
SIGNED ON BEHALF OF THE COMPANY \_\_\_\_\_

IN HIS CAPACITY AS \_\_\_\_\_CAPACITY AS

\_\_\_\_\_

DATE: \_\_\_\_\_

SIGNATURE OF SIGNATORY: \_\_\_\_\_

AS WITNESSES: 1 \_\_\_\_\_

2 \_\_\_\_\_

9 I/we, the undersigned, who is / are duly authorised to do so on behalf of the company/firm, certify that the points claimed, based on the B-BBE status level of contribution indicated in paragraph 7 of the foregoing certificate, qualifies the company/ firm for the preference(s) shown and I / we acknowledge that:

- (i) The information furnished is true and correct.
- (ii) The preference points claimed are in accordance with the General Conditions as indicated in paragraph 1 of this form.
- (iii) In the event of a contract being awarded as a result of points claimed as shown in paragraph 7, the contractor may be required to furnish documentary proof to the satisfaction of the purchaser that the claims are correct;
- (iv) If the B-BBEE status level of contribution has been claimed or obtained on a fraudulent basis or any of the conditions of contract have not been fulfilled, the purchaser may, in addition to any other remedy it may have –
  - (a) disqualify the person from the bidding process;
  - (b) recover costs, losses or damages it has incurred or suffered as a result of that person's conduct;
  - (c) cancel the contract and claim any damages which it has suffered as a result of having to make less favourable arrangements due to such cancellation;
  - (d) restrict the bidder or contractor, its shareholders and directors, or only the shareholders and directors who acted on a fraudulent basis, from obtaining business from any organ of state for a period not exceeding 10 years, after the audi alteram partem (hear the other side) rule has been applied; and
  - (e) forward the matter for criminal prosecution

.....  
**SIGNATURE(S) OF BIDDER(S)**

**SURNAME AND NAME:** .....

**DATE:** .....

**ADDRESS:** .....

.....  
.....

## **MBD 6.2**

### **DECLARATION CERTIFICATE FOR LOCAL PRODUCTION AND CONTENT FOR DESIGNATED SECTORS**

This Municipal Bidding Document (MBD) must form part of all bids invited. It contains general information and serves as a declaration form for local content (local production and local content are used interchangeably).

Before completing this declaration, bidders must study the General Conditions, Definitions, Directives applicable in respect of Local Content as prescribed in the Preferential Procurement Regulations, 2011 and the South African Bureau of Standards (SABS) approved technical specification number SATS 1286:2011 (Edition 1) and the Guidance on the Calculation of Local Content together with the Local Content Declaration Templates [Annex C (Local Content Declaration: Summary Schedule), D (Imported Content Declaration: Supporting Schedule to Annex C) and E (Local Content Declaration: Supporting Schedule to Annex C)].

#### **1. General Conditions**

- 1.1. Preferential Procurement Regulations, 2011 (Regulation 9) makes provision for the promotion of local production and content.
- 1.2. Regulation 9.(1) prescribes that in the case of designated sectors, where in the award of bids local production and content is of critical importance, such bids must be advertised with the specific bidding condition that only locally produced goods, services or works or locally manufactured goods, with a stipulated minimum threshold for local production and content will be considered.
- 1.3. Where necessary, for bids referred to in paragraph 1.2 above, a two stage bidding process may be followed, where the first stage involves a minimum threshold for local production and content and the second stage price and B-BBEE.
- 1.4. A person awarded a contract in relation to a designated sector, may not sub-contract in such a manner that the local production and content of the overall value of the contract is reduced to below the stipulated minimum threshold.
- 1.5. The local content (LC) expressed as a percentage of the bid price must be calculated in accordance with the SABS approved technical specification number SATS 1286: 2011 as follows:  
$$LC = [1 - x / y] * 100$$

Where

- x is the imported content in Rand
- y is the bid price in Rand excluding value added tax (VAT)

Prices referred to in the determination of x must be converted to Rand (ZAR) by using the exchange rate published by the South African Reserve Bank (SARB) at 12:00 on the date of advertisement of the bid as required in paragraph 4.1 below.

**The SABS approved technical specification number SATS 1286:2011 is accessible on [http://www.thedti.gov.za/industrial development/ip.jsp](http://www.thedti.gov.za/industrial%20development/ip.jsp) at no cost.**

1.6. A bid may be disqualified if –

- (a) this Declaration Certificate and the Annex C (Local Content Declaration: Summary Schedule) are not submitted as part of the bid documentation; and
- (b) the bidder fails to declare that the Local Content Declaration Templates (Annex C, D and E) have been audited and certified as correct.

## **2. Definitions**

- 2.1. **“bid”** includes written price quotations, advertised competitive bids or proposals;
- 2.2. **“bid price”** price offered by the bidder, excluding value added tax (VAT);
- 2.3. **“contract”** means the agreement that results from the acceptance of a bid by an organ of state;
- 2.4. **“designated sector”** means a sector, sub-sector or industry that has been designated by the Department of Trade and Industry in line with national development and industrial policies for local production, where only locally produced services, works or goods or locally manufactured goods meet the stipulated minimum threshold for local production and content;
- 2.5. **“duly sign”** means a Declaration Certificate for Local Content that has been signed by the Chief Financial Officer or other legally responsible person nominated in writing by the Chief Executive, or senior member / person with management responsibility (close corporation, partnership or individual).
- 2.6. **“imported content”** means that portion of the bid price represented by the cost of components, parts or materials which have been or are still to be imported (whether by the supplier or its subcontractors) and which costs are inclusive of the costs abroad (this includes labour and intellectual property costs), plus freight and other direct importation costs, such as landing costs, dock duties, import duty, sales duty or other similar tax or duty at the South African port of entry;
- 2.7. **“local content”** means that portion of the bid price which is not included in the imported content, provided that local manufacture does take place;
- 2.8. **“stipulated minimum threshold”** means that portion of local production and content as determined by the Department of Trade and Industry; and



2.9. “**sub-contract**” means the primary contractor’s assigning, leasing, making out work to, or employing another person to support such primary contractor in the execution of part of a project in terms of the contract.

3. **The stipulated minimum threshold(s) for local production and content (refer to Annex A of SATS 1286:2011) for this bid is/are as follows:**

<u>Description of services, works or goods</u>	<u>Stipulated minimum threshold</u>
<b>STREET LIGHT STEEL POLES</b>	<b>100%</b>

4. Does any portion of the services, works or goods offered have any imported content?

(***Tick applicable box***)

YES		NO	
-----	--	----	--

4.1 If yes, the rate(s) of exchange to be used in this bid to calculate the local content as prescribed in paragraph 1.5 of the general conditions must be the rate(s) published by the SARB for the specific currency at 12:00 on the date of advertisement of the bid.

The relevant rates of exchange information is accessible on **[www.reservebank.co.za](http://www.reservebank.co.za)**.

Indicate the rate(s) of exchange against the appropriate currency in the table below (refer to Annex A of SATS 1286:2011):

<b>Currency</b>	<b>Rates of exchange</b>
US Dollar	
Pound Sterling	
Euro	
Yen	
Other	

NB: Bidders must submit proof of the SARB rate (s) of exchange used.

5. Were the Local Content Declaration Templates (Annex C, D and E) audited and certified as correct?

(***Tick applicable box***)

YES		NO	
-----	--	----	--

5.1. If yes, provide the following particulars:

(a) Full name of auditor: .....

(b) Practice number: .....

(c) Telephone and cell number: .....

(d) Email address: .....

(Documentary proof regarding the declaration will, when required, be submitted to the satisfaction of the Accounting Officer / Accounting Authority)

6. Where, after the award of a bid, challenges are experienced in meeting the stipulated minimum threshold for local content the dti must be informed accordingly in order for the dti to verify and in consultation with the Accounting Officer / Accounting Authority provide directives in this regard.

### **LOCAL CONTENT DECLARATION**

**(REFER TO ANNEX B OF SATS 1286:2011)**

**LOCAL CONTENT DECLARATION BY CHIEF FINANCIAL OFFICER OR OTHER LEGALLY RESPONSIBLE PERSON NOMINATED IN WRITING BY THE CHIEF EXECUTIVE OR SENIOR MEMBER/PERSON WITH MANAGEMENT RESPONSIBILITY (CLOSE CORPORATION, PARTNERSHIP OR INDIVIDUAL)**

**IN RESPECT OF BID NO. ....**

**ISSUED BY:** (Procurement Authority / Name of Municipality / Municipal Entity):

.....

NB

1 The obligation to complete, duly sign and submit this declaration cannot be transferred to an external authorized representative, auditor or any other third party acting on behalf of the bidder.

2 Guidance on the Calculation of Local Content together with Local Content Declaration Templates (Annex C, D and E) is accessible on <http://www.thedti.gov.za/industrialdevelopment/ip.jsp>. Bidders should first complete Declaration D. After completing Declaration D, bidders should complete Declaration E and then consolidate the information on Declaration C. **Declaration C should be submitted with the bid documentation at the closing date and time of the bid in order to substantiate the declaration made in paragraph (c) below.** Declarations D and E should be kept by the bidders for verification purposes for a period of at least 5 years. The successful bidder is required to continuously update Declarations C, D and E with the actual values for the duration of the contract.

I, the undersigned, ..... (full names),

do hereby declare, in my capacity as .....

of .....(name of bidder entity), the following:

(a) The facts contained herein are within my own personal knowledge.

(b) I have satisfied myself that

- (i) the goods/services/works to be delivered in terms of the above-specified bid comply with the minimum local content requirements as specified in the bid, and as measured in terms of SATS 1286:2011; and
- (ii) the declaration templates have been audited and certified to be correct.

(c) The local content percentages (%) indicated below has been calculated using the formula given in clause 3 of SATS 1286:2011, the rates of exchange indicated in paragraph 4.1 above and the information contained in Declaration D and E which has been consolidated in Declaration C;

Bid price, excluding VAT (y)	R
Imported content (x), as calculated in terms of SATS 1286:2011	R
Stipulated minimum threshold for local content (paragraph 3 above)	
Local content %, as calculated in terms of SATS 1286:2011	

**If the bid is for more than one product, the local content percentages for each product contained in Declaration C shall be used instead of the table above. The local content percentages for each product has been calculated using the formula given in clause 3 of SATS 1286:2011, the rates of exchange indicated in paragraph 4.1 above and the information contained in Declaration D and E.**

(d) I accept that the Procurement Authority / Municipality /Municipal Entity has the right to request that the local content be verified in terms of the requirements of SATS 1286:2011

(e) I understand that the awarding of the bid is dependent on the accuracy of the information furnished in this application. I also understand that the submission of incorrect data, or data that are not verifiable as described in SATS 1286:2011, may result in the Procurement Authority / Municipal / Municipal Entity imposing any or all of the remedies as provided for in Regulation 13 of the Preferential Procurement Regulations, 2011 promulgated under the Preferential Policy Framework Act (PPPFA), 2000 (Act No. 5 of 2000).

**SIGNATURE:** \_\_\_\_\_

**DATE:** \_\_\_\_\_

**WITNESS No. 1** \_\_\_\_\_

**DATE:** \_\_\_\_\_

**WITNESS No. 2** \_\_\_\_\_

**DATE:** \_\_\_\_\_

### 3. ANNEXURE C

#### 3.1. GUIDELINES FOR COMPLETING ANNEXURE C:

##### LOCAL CONTENT DECLARATION – SUMMARY SCHEDULE

*Note: The paragraph numbers correspond to the numbers in Annexure C.*

#### C1. Tender Number

Supply the tender number that is specified on the specific tender documentation.

#### C2. Tender description

Supply the tender description that is specified on the specific tender documentation.

**C3. Designated products**

Supply the details of the products that are designated in terms of this tender (i.e. buses).

**C4. Tender Authority**

Supply the name of the tender authority.

**C5. Tendering Entity name**

Provide the tendering entity name (for example, Unibody Bus Builders (Pty) Ltd).

**C6. Tender Exchange Rate**

Provide the exchange rate used for this tender, as per Municipal Bidding Document (MBD) 6.2.

**C7. Specified local content %**

Provide the specified minimum local content requirement for the tender (i.e. 90%), as per Municipal Bidding Document (MDB) 6.2.

**C8. Tender item number**

Provide the tender item number(s) of the products that have a local content requirement as per the tender specification.

**C9. List of items**

Provide a list of the item(s) corresponding with the tender item number.

This may be a short description or a brand name.

## **CALCULATION OF LOCAL CONTENT**

**C10. Tender price**

Provide the unit tender price of each item excluding VAT.

**C11. Exempted imported content**

Provide the ZAR value of the exempted imported content for each item, if applicable. These value(s) must correspond with the value(s) of column D16 on Annexure D.

**C12. Tender value net of exempted imported content**

Provide the net tender value of the item, if applicable, by deducting the exempted imported content (C11) from the tender price (C10).

**C13. Imported value**

Provide the ZAR value of the items' imported content.

**C14. Local value**

Provide the local value of the item by deducting the Imported value (C13) from the net tender value (C12).

**C15. Local content percentage (per item)**

Provide the local content percentage of the item(s) by dividing the local value (C14) by the net tender value (C12) as per the local content formula in SATS 1286.

## **TENDER SUMMARY**

### **C16. Tender quantity**

Provide the tender quantity for each item number as per the tender specification.

### **C17. Total tender value**

Provide the total tender value by multiplying the tender quantity (C16) by the tender price (C10).

### **C18. Total exempted imported content**

Provide the total exempted imported content by multiplying the tender quantity (C16) by the exempted imported content (C11). These values must correspond with the values of column D18 on Annexure D.

### **C19. Total imported content**

Provide the total imported content of each item by multiplying the tender quantity (C16) by the imported value (C13).

### **C20. Total tender value**

Total tender value is the sum of the values in column C17.

### **C21. Total exempted imported content**

Total exempted imported content is the sum of the values in column C18. This value must correspond with the value of D19 on Annexure D.

### **C22. Total tender value net of exempted imported content**

The total tender value net of exempt imported content is the total tender value (C20) less the total exempted imported content (C21).

### **C23. Total imported content**

Total imported content is the sum of the values in column C19. This value must correspond with the value of D53 on Annexure D.

### **C24. Total local content**

Total local content is the total tender value net of exempted imported content (C22) less the total imported content (C23). This value must correspond with the value of E13 on Annexure E.

### **C25. Average local content percentage of tender**

The average local content percentage of tender is calculated by dividing total local content (C24) by the total tender value net of exempted imported content (C22).

## Annex C

## Local Content Declaration - Summary Schedule

(C1)	<b>Tender No.</b>	
(C2)	<b>Tender description:</b>	
(C3)	<b>Designated product(s)</b>	
(C4)	<b>Tender Authority:</b>	
(C5)	<b>Tendering Entity name:</b>	
(C6)	<b>Tender Exchange Rate:</b>	
(C7)	<b>Specified local content %</b>	<b>100</b>

**Note:** VAT to be excluded from all calculations

Pula	EU	GBP
------	----	-----

### Calculation of local content

## Tender summary

[illegible]

**Signature of tenderer from Annex B**

(C20) Total tender value

**(C21) Total Exempt imported content**

**(C22) Total Tender value net of exempt imported content**

**(C23) Total Imported content**

**(C24) Total local content**

**(C25) Average local content % of tender**

Date:

## **4. ANNEXURE D**

### **4.1. GUIDELINES FOR COMPLETING ANNEXURE D:**

#### **“IMPORTED CONTENT DECLARATION – SUPPORTING SCHEDULE TO ANNEXURE C”**

*Note: The paragraph numbers correspond to the numbers in Annexure D.*

**D1. Tender number**

Supply the tender number that is specified on the specific tender documentation.

**D2. Tender description**

Supply the tender description that is specified on the specific tender documentation.

**D3. Designated products**

Supply the details of the products that are designated in terms of this tender (i.e. buses).

**D4. Tender authority**

Supply the name of the tender authority.

**D5. Tendering entity name**

Provide the tendering entity name (i.e. Unibody Bus Builders (Pty) Ltd).

**D6. Tender exchange rate**

Provide the exchange rate used for this tender, as per the Standard Bidding Document (SBD) and Municipal Bidding Document (MBD) 6.2.

#### **TABLE A. EXEMPTED IMPORTED CONTENT**

**D7. Tender item number**

Provide the tender item number(s) of the product(s) that have imported content.

**D8. Description of imported content**

Provide a list of the exempted imported product(s), if any, as specified in the tender.

**D9. Local supplier**

Provide the name of the local supplier(s) supplying the imported product(s).

**D10. Overseas supplier**

Provide the name(s) of the overseas supplier(s) supplying the exempted imported product(s).

**D11. Imported value as per commercial invoice**

Provide the foreign currency value of the exempted imported product(s) disclosed in the commercial invoice accepted by the South African Revenue Service (SARS).

**D12. Tender exchange rate**

Provide the exchange rate used for this tender as per the Standard Bidding Document (SBD) and Municipal Bidding Document (MBD) 6.2.

**D13. Local value of imports**

Convert the value of the exempted imported content as per commercial invoice (D11) into the ZAR value by using the tender exchange rate (D12) disclosed in the tender documentation.

**D14. Freight costs to port of entry**

Provide the freight costs to the South African Port of the exempted imported item.

**D15. All locally incurred landing costs and duties**

Provide all landing costs including customs and excise duty for the exempted imported product(s) as stipulated in the SATS 1286:2011.

**D16. Total landed costs excl VAT**

Provide the total landed costs (excluding VAT) for each item imported by adding the corresponding item values in columns D13, D14 and D15. These values must be transferred to column C11 on Annexure C.

**D17. Tender quantity**

Provide the tender quantity of the exempted imported products as per the tender specification.

**D18. Exempted imported value**

Provide the imported value for each of the exempted imported product(s) by multiplying the total landed cost (excl. VAT) (D16) by the tender quantity (D17). The values in column D18 must correspond with the values of column C18 of Annexure C.

**D19. Total exempted imported value**

The total exempted imported value is the sum of the values in column D18. This total must correspond with the value of C21 on Annexure C.

**TABLE B. IMPORTED DIRECTLY BY TENDERER**

**D20. Tender item numbers**

Provide the tender item number(s) of the product(s) that have imported content.

**D21. Description of imported content:**

Provide a list of the product(s) imported directly by tender as specified in the tender documentation.

**D22. Unit of measure**

Provide the unit of measure for the product(s) imported directly by the tenderer.

**D23. Overseas supplier**

Provide the name(s) of the overseas supplier(s) supplying the imported product(s).

**D24. Imported value as per commercial Invoice**

Provide the foreign currency value of the product(s) imported directly by tenderer disclosed in the commercial invoice accepted by the South African Revenue Service (SARS).

**D25. Tender rate of exchange**

Provide the exchange rate used for this tender as per the Standard Bidding Document (SBD) and Municipal Bidding Document (MBD) 6.2.

**D26. Local value of imports**

Convert the value of the product(s) imported directly by the tenderer as per commercial invoice (D24) into the ZAR value by using the tender exchange rate (D25) disclosed in the tender documentation.



**D27. Freight costs to port of entry**

Provide the freight costs to the South African Port of the product(s) imported directly by the tenderer.

**D28. All locally incurred landing costs and duties**

Provide all landing costs including customs and excise duty for the product(s) imported directly by the tenderer as stipulated in the SATS 1286:2011.

**D29. Total landed costs excl VAT**

Provide the total landed costs (excluding VAT) for each item imported directly by the tenderer by adding the corresponding item values in columns D26, D27 and D28.

**D30. Tender quantity**

Provide the tender quantity of the product(s) imported directly by the tenderer as per the tender specification.

**D31. Total imported value**

Provide the total imported value for each of the product(s) imported directly by the tenderer by multiplying the total landed cost (excl. VAT) (D29) by the tender quantity (D30).

**D32. Total imported value by tenderer**

The total value of imports by the tenderer is the sum of the values in column D31.

**TABLE C. IMPORTED BY THIRD PARTY AND SUPPLIED TO THE TENDERER****D33. Description of imported content**

Provide a list of the product(s) imported by the third party and supplied to the tenderer as specified in the tender documentation.

**D34. Unit of measure**

Provide the unit of measure for the product(s) imported by the third party and supplied to tenderer as disclosed in the commercial invoice.

**D35. Local supplier**

Provide the name of the local supplier(s) supplying the imported product(s).

**D36. Overseas supplier**

Provide the name(s) of the overseas supplier(s) supplying the imported products.

**D37. Imported value as per commercial invoice**

Provide the foreign currency value of the product(s) imported by the third party and supplied to the tenderer disclosed in the commercial invoice accepted by SARS.

**D38. Tender rate of exchange**

Provide the exchange rate used for this tender as per the Standard Bidding Document (SBD) and Municipal Bidding Document (MBD) 6.2.

**D39. Local value of imports**

Convert the value of the product(s) imported by the third party as per commercial invoice (D37) into the ZAR value by using the tender exchange rate (D38) disclosed in the tender documentation.

**D40. Freight costs to port of entry**

Provide the freight costs to the South African Port of the product(s) imported by third party and supplied to the tenderer.

**D41. All locally incurred landing costs and duties**

Provide all landing costs including customs and excise duty for the product(s) imported by third party and supplied to the tenderer as stipulated in the SATS 1286:2011.

**D42. Total landed costs excluding VAT**

Provide the total landed costs (excluding VAT) for each product imported by third party and supplied to the tenderer by adding the corresponding item values in columns D39, D40 and D41.

**D43. Quantity imported**

Provide the quantity of each product(s) imported by third party and supplied to the tenderer for the tender.

**D44. Total imported value**

Provide the total imported value of the product(s) imported by third party and supplied to the tenderer by multiplying the total landed cost (D42) by the quantity imported (D43).

**D45. Total imported value by third party**

The total imported value from the third party is the sum of the values in column D44.

**TABLE D. OTHER FOREIGN CURRENCY PAYMENTS****D46. Type of payment**

Provide the type of foreign currency payment. (i.e. royalty payment for use of patent, annual licence fee, etc).

**D47. Local supplier making the payment**

Provide the name of the local supplier making the payment.

**D48. Overseas beneficiary**

Provide the name of the overseas beneficiary.

**D49. Foreign currency value paid**

Provide the value of the listed payment(s) in their foreign currency.

**D50. Tender rate of exchange**

Provide the exchange rate used for this tender as per the Standard Bidding Document (SBD) and Municipal Bidding Document (MBD) 6.2.

**D51. Local value of payments**

Provide the local value of each payment by multiplying the foreign currency value paid (D49) by the tender rate of exchange (D50).

**D52. Total of foreign currency payments declared by tenderer and/or third party**

The total of foreign currency payments declared by tenderer and/or a third party is the sum of the values in column D51.

**D53. Total of imported content and foreign currency payment**

The total imported content and foreign currency payment is the sum of the values in column D32, D45 and D52. This value must correspond with the value of C23 on Annexure C

## Annex D

SATS 1286.2011

### Imported Content Declaration - Supporting Schedule to Annex C

(D1)	Tender No.						<b>Note:</b> VAT to be excluded from all calculations
(D2)	Tender description:						
(D3)	Designated Products:						
(D4)	Tender Authority:						
(D5)	Tendering Entity name:						
(D6)	Tender Exchange Rate:	Pula		EU	R 9,00	GBP	R 12,00

#### A. Exempted imported content

#### Calculation of imported content

#### Summary

Tender item no's	Description of imported content	Local supplier	Overseas Supplier	Forign currency value as per Commercial Invoice	Tender Exchange Rate	Local value of imports	Freight costs to port of entry	All locally incurred landing costs & duties	Total landed cost excl VAT	Tender Qty	Exempted imported value
(D7)	(D8)	(D9)	(D10)	(D11)	(D12)	(D13)	(D14)	(D15)	(D16)	(D17)	(D18)
(D19) Total exempt imported value										R 0	

This total must correspond with Annex C - C 21

#### B. Imported directly by the Tenderer

#### Calculation of imported content

#### Summary

Tender item no's	Description of imported content	Unit of measure	Overseas Supplier	Forign currency value as per Commercial Invoice	Tender Rate of Exchange	Local value of imports	Freight costs to port of entry	All locally incurred landing costs & duties	Total landed cost excl VAT	Tender Qty	Total imported value
(D20)	(D21)	(D22)	(D23)	(D24)	(D25)	(D26)	(D27)	(D28)	(D29)	(D30)	(D31)
(D32) Total imported value by tenderer										R 0	

#### C. Imported by a 3rd party and supplied to the Tenderer

#### Calculation of imported content

#### Summary

Description of imported content	Unit of measure	Local supplier	Overseas Supplier	Forign currency value as per Commercial Invoice	Tender Rate of Exchange	Local value of imports	Freight costs to port of entry	All locally incurred landing costs & duties	Total landed cost excl VAT	Quantity imported	Total imported value
(D33)	(D34)	(D35)	(D36)	(D37)	(D38)	(D39)	(D40)	(D41)	(D42)	(D43)	(D44)
(D45) Total imported value by 3rd party										R 0	

#### D. Other foreign currency payments

#### Calculation of foreign currency payments

#### Summary of payments

Type of payment	Local supplier making the payment	Overseas beneficiary	Foreign currency value paid	Tender Rate of Exchange	Local value of payments
(D46)	(D47)	(D48)	(D49)	(D50)	(D51)

(D52) Total of foreign currency payments declared by tenderer and/or 3rd party

(D53) Total of imported content & foreign currency payments - (D32), (D45) & (D52) above R 0

Date:

TENDER NO: IDS (E) 22/2025

This total must correspond with Annex C - C 23

## **5. ANNEXURE E**

### **5.1. GUIDELINES TO COMPLETING ANNEXURE E:**

#### **“LOCAL CONTENT DECLARATION- SUPPORTING SCHEDULE TO ANNEXURE C”**

*The paragraph numbers correspond to the numbers in Annexure E*

#### **E1. Tender number**

Supply the tender number that is specified on the specific tender documentation.

#### **E2. Tender description**

Supply the tender description that is specified on the specific tender documentation.

#### **E3. Designated products**

Supply the details of the products that are designated in terms of this tender (for example, buses/canned vegetables).

#### **E4. Tender authority**

Supply the name of the tender authority.

#### **E5. Tendering entity name**

Provide the tendering entity name (for example, Unibody Bus Builders (Pty) Ltd) Ltd).

### **LOCAL GOODS, SERVICES AND WORKS**

#### **E6. Description of items purchased**

Provide a description of the items purchased locally in the space provided.

#### **E7. Local supplier**

Provide the name of the local supplier that corresponds to the item listed in column E6.

#### **E8. Value**

Provide the total value of the item purchased in column E6.

#### **E9. Total local products (Goods, Services and Works)**

Total local products (goods, services and works) is the sum of the values in E8.

#### **E10. Manpower costs:**

Provide the total of all the labour costs accruing only to the tenderer (i.e. not the suppliers to tenderer).

#### **E11. Factory overheads:**

Provide the total of all the factory overheads including rental, depreciation and amortisation for local and imported capital goods, utility costs and consumables. (Consumables are goods used by individuals and businesses that must be replaced regularly because they wear out or are used up. Consumables can also be defined as the components of an end product that are used up or permanently altered in the process of manufacturing, such as basic chemicals.)

#### **E12. Administration overheads and mark-up:**

Provide the total of all the administration overheads, including marketing, insurance, financing, interest and mark-up costs.

**E13. Total local content:**

The total local content is the sum of the values of E9, E10, E11 and E12. This total must correspond with C24 of Annexure C

## Annex E

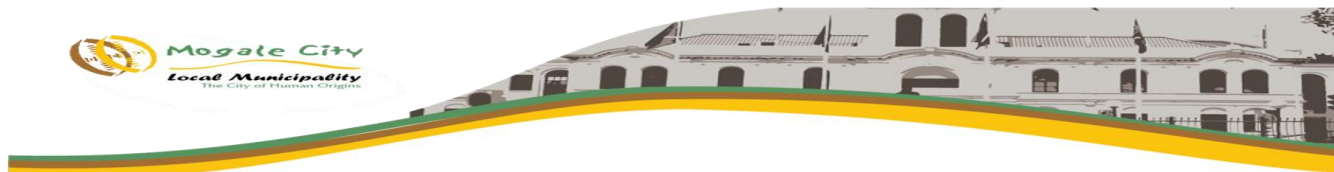
## Local Content Declaration - Supporting Schedule to Annex C

(E1)	Tender No.					Note: VAT to be excluded from all calculations
(E2)	Tender description:					
(E3)	Designated products:					
(E4)	Tender Authority:					
(E5)	Tendering Entity name:					

Local Products (Goods, Services and Works)	Description of items purchased	Local suppliers	Value
	(E6)	(E7)	(E8)
	Nylon	Abulani	
	(E9) Total local products (Goods, Services and Works)		R 0
(E10) Manpower costs	(Tenderer's manpower cost)		R 0
(E11) Factory overheads	(Rental, depreciation & amortisation, utility costs, consumables etc.)		R 0
(E12) Administration overheads and mark-up	(Marketing, insurance, financing, interest etc.)		R 10
		(E13) Total local content	R 0
		This total must correspond with Annex C - C24	

Signature of tenderer from Annex B

Date:



MBD 8

## MOGALE CITY LOCAL MUNICIPALITY

### DECLARATION OF BIDDER'S PAST SUPPLY CHAIN MANAGEMENT PRACTICES

- 1 This Municipal Bidding Document must form part of all bids invited.
- 2 It serves as a declaration to be used by municipalities and municipal entities in ensuring that when goods and services are being procured, all reasonable steps are taken to combat the abuse of the supply chain management system.
- 3 The bid of any bidder may be rejected if that bidder, or any of its directors have:
  - a. abused the municipality's / municipal entity's supply chain management system or committed any improper conduct in relation to such system;
  - b. been convicted for fraud or corruption during the past five years;
  - c. willfully neglected, reneged on or failed to comply with any government, municipal or other public sector contract during the past five years; or
  - d. been listed in the Register for Bid Defaulters in terms of section 29 of the Prevention and Combating of Corrupt Activities Act (No 12 of 2004).
- 4 **In order to give effect to the above, the following questionnaire must be completed and submitted with the bid.**

Item	Question	Yes	No
4.1	<p>Is the bidder or any of its directors listed on the National Treasury's Database of Restricted Suppliers as companies or persons prohibited from doing business with the public sector?</p> <p>(Companies or persons who are listed on this Database were informed in writing of this restriction by the Accounting Officer/Authority of the institution that imposed the restriction after the <i>audi alteram partem</i> rule was applied).</p> <p><b>The Database of Restricted Suppliers now resides on the National Treasury's website(<a href="http://www.treasury.gov.za">www.treasury.gov.za</a>) and can be accessed by clicking on its link at the bottom of the home page.</b></p>	Yes <input type="checkbox"/>	No <input type="checkbox"/>
4.1.1	If so, furnish particulars: <div style="border: 1px solid black; height: 40px; width: 100%; margin-top: 5px;"></div>		

4.2	Is the bidder or any of its directors listed on the Register for Bid Defaulters in terms of section 29 of the Prevention and Combating of Corrupt Activities Act (No 12 of 2004)? <b>The Register for Bid Defaulters can be accessed on the National Treasury's website (<a href="http://www.treasury.gov.za">www.treasury.gov.za</a>) by clicking on its link at the bottom of the home page.</b>	Yes <input type="checkbox"/>	No <input type="checkbox"/>
4.2.1	If so, furnish particulars:		
4.3	Was the bidder or any of its directors convicted by a court of law (including a court of law outside the Republic of South Africa) for fraud or corruption during the past five years?	Yes <input type="checkbox"/>	No <input type="checkbox"/>
4.3.1	If so, furnish particulars:		
<b>Item</b>	<b>Question</b>	<b>Yes</b>	<b>No</b>
4.4	Does the bidder or any of its directors owe any municipal rates and taxes or municipal charges to the municipality / municipal entity, or to any other municipality / municipal entity, that is in arrears for more than three months?	Yes <input type="checkbox"/>	No <input type="checkbox"/>
4.4.1	If so, furnish particulars:		
4.5	Was any contract between the bidder and the municipality / municipal entity or any other organ of state terminated during the past five years on account of failure to perform on or comply with the contract?	Yes <input type="checkbox"/>	No <input type="checkbox"/>
4.7.1	If so, furnish particulars:		

### CERTIFICATION

**I, THE UNDERSIGNED (FULL NAME) .....CERTIFY THAT THE INFORMATION FURNISHED ON THISDECLARATION FORM TRUE AND CORRECT.I ACCEPT THAT, IN ADDITION TO CANCELLATION OF A CONTRACT, ACTION MAY BE TAKEN AGAINST ME SHOULD THIS DECLARATION PROVE TO BE FALSE.**

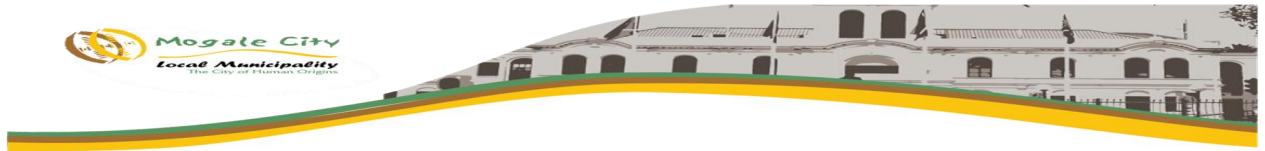
.....  
**Signature**

.....  
**Date**

.....  
**Position**

.....  
**Name of Bidder**





MBD 9

## CERTIFICATE OF INDEPENDENT BID DETERMINATION

I, the undersigned, in submitting the accompanying bid:

**TENDER NO. IDS (E) 22/2025: TENDERS ARE HEREBY INVITED FROM SERVICE PROVIDER/S FOR THE SUPPLY, DELIVERY AND OFF-LOADING OF VARIOUS GALVANIZED STEEL TRAFFIC SIGNAL POLES, ELECTRICITY DISTRIBUTION POLES AND PUBLIC LIGHTING POLES THAT ARE LOCALLY MANUFACTURED WITH A STIPULATED MINIMUM THRESHOLD OF 100% LOCAL PRODUCTION AND CONTENT AT THE MUNICIPAL STORES AT CHAMDOR ON AN AS AND WHEN REQUIRED BASIS FOR A THREE (3) YEARS PERIOD FOR MOGALE CITY LOCAL MUNICIPALITY.**

in response to the invitation for the bid made by: **MOGALE CITY LOCAL MUNICIPALITY**

(Name of Municipality / Municipal Entity)

do hereby make the following statements that I certify to be true and complete in every respect:

I certify, on behalf of:

\_\_\_\_\_ that:

(Name of Bidder)

1. I have read and I understand the contents of this Certificate;
2. I understand that the accompanying bid will be disqualified if this Certificate is found not to be true and complete in every respect;
3. I am authorized by the bidder to sign this Certificate, and to submit the accompanying bid, on behalf of the bidder;
4. Each person whose signature appears on the accompanying bid has been authorized by the bidder to determine the terms of, and to sign, the bid, on behalf of the bidder;
5. For the purposes of this Certificate and the accompanying bid, I understand that the word "competitor" shall include any individual or organization, other than the bidder, whether or not affiliated with the bidder, who:
  - (a) has been requested to submit a bid in response to this bid invitation;
  - (b) could potentially submit a bid in response to this bid invitation, based on their qualifications, abilities or experience; and
  - (c) provides the same goods and services as the bidder and/or is in the same line of business as the bidder
6. The bidder has arrived at the accompanying bid independently from, and without consultation, communication, agreement or arrangement with any competitor. However

communication between partners in a joint venture or consortium<sup>3</sup> will not be construed as collusive bidding.

7. In particular, without limiting the generality of paragraphs 6 above, there has been no consultation, communication, agreement or arrangement with any competitor regarding:
  - (a) prices;
  - (b) geographical area where product or service will be rendered (market allocation)
  - (c) methods, factors or formulas used to calculate prices;
  - (d) the intention or decision to submit or not to submit, a bid;
  - (e) the submission of a bid which does not meet the specifications and conditions of the bid; or
  - (f) bidding with the intention not to win the bid.
8. In addition, there have been no consultations, communications, agreements or arrangements with any competitor regarding the quality, quantity, specifications and conditions or delivery particulars of the products or services to which this bid invitation relates.
9. The terms of the accompanying bid have not been, and will not be, disclosed by the bidder, directly or indirectly, to any competitor, prior to the date and time of the official bid opening or of the awarding of the contract.

**<sup>3</sup> Joint venture or Consortium means an association of persons for the purpose of combining their expertise, property, capital, efforts, skill and knowledge in an activity for the execution of a contract.**

10. I am aware that, in addition and without prejudice to any other remedy provided to combat any restrictive practices related to bids and contracts, bids that are suspicious will be reported to the Competition Commission for investigation and possible imposition of administrative penalties in terms of section 59 of the Competition Act No 89 of 1998 and or may be reported to the National Prosecuting Authority (NPA) for criminal investigation and or may be restricted from conducting business with the public sector for a period not exceeding ten (10) years in terms of the Prevention and Combating of Corrupt Activities Act No 12 of 2004 or any other applicable legislation.

.....	.....
Signature	Date
.....	.....
Position	Name of Bidder

**GENERAL CONDITIONS OF CONTRACT**

**THE NATIONAL TREASURY**

**Republic of South Africa**



**GOVERNMENT PROCUREMENT  
GENERAL CONDITIONS OF CONTRACT  
JULY 2010**

**GOVERNMENT PROCUREMENT:  
GENERAL CONDITIONS OF CONTRACT**  
July 2010

**THE NATIONAL TREASURY: Republic of South Africa 2**

**TABLE OF CLAUSES**

1. Definitions
2. Application
3. General
4. Standards
5. Use of contract documents and information inspection
6. Patent Rights
7. Performance security
8. Inspections, tests and analyses
9. Packing
10. Delivery and documents
11. Insurance
12. Transportation
13. Incidental Services
14. Spare parts
15. Warranty
16. Payment
17. Prices
18. Variation orders
19. Assignment
20. Subcontracts
21. Delays in the supplier's performance
22. Penalties
23. Termination for default
24. Anti-dumping and countervailing duties and rights
25. Force Majeure
26. Termination for insolvency
27. Settlement of Disputes
28. Limitation of Liability
29. Governing language
30. Applicable law
31. Notices
32. Taxes and duties
33. Transfer of contracts
34. Amendments of contracts
35. Prohibition of restrictive practices

**GOVERNMENT PROCUREMENT: GENERAL CONDITIONS OF CONTRACT**  
**THE NATIONAL TREASURY: Republic of South Africa 3**  
**General Conditions of Contract**

**1. Definitions**

1. The following terms shall be interpreted as indicated:

- 1.1 "Closing time" means the date and hour specified in the bidding documents for the receipt of bids.
- 1.2 "Contract" means the written agreement entered into between the purchaser and the supplier, as recorded in the contract form signed by the parties, including all attachments and appendices thereto and all documents incorporated by reference therein.
- 1.3 "Contract price" means the price payable to the supplier under the contract for the full and proper performance of his contractual obligations.
- 1.4 "Corrupt practice" means the offering, giving, receiving, or soliciting of anything of value to influence the action of a public official in the procurement process or in contract execution.
- 1.5 "Countervailing duties" are imposed in cases where an enterprise abroad is subsidized by its government and encouraged to market its products internationally.
- "Country of origin" means the place where the goods were mined, grown or produced or from which the services are supplied. Goods are produced when, through manufacturing, processing or substantial and major assembly of components, a commercially recognized new product results that is substantially different in basic characteristics or in purpose or utility from its components.
- "Day" means calendar day.
- 1.8 "Delivery" means delivery in compliance of the conditions of the contract or order.
- 1.9 "Delivery ex stock" means immediate delivery directly from stock actually on hand.
- 1.10 "Delivery into consignees store or to his site" means delivered and unloaded in the specified store or depot or on the specified site in compliance with the conditions of the contract or order, the supplier bearing all risks and charges involved until the goods are so delivered and a valid receipt is obtained.
- 1.11 "Dumping" occurs when a private enterprise abroad market its goods on own initiative in the RSA at lower prices than that of the country of origin and which have the potential to harm the local industries in the RSA.
- 1.12 "Force majeure" means an event beyond the control of the supplier and not involving the supplier's fault or negligence and not foreseeable. Such events may include, but is not restricted to, acts of the purchaser in its sovereign capacity, wars or revolutions, fires, floods, epidemics, quarantine restrictions and freight embargoes.
- 1.13 "Fraudulent practice" means a misrepresentation of facts in order to influence a procurement process or the execution of a contract to the detriment of any bidder, and includes collusive practice among bidders (prior to or after bid submission) designed to establish bid prices at artificial non-competitive levels and to deprive the bidder of the benefits of free and open competition.
- 1.14 "GCC" means the General Conditions of Contract.
- 1.15 "Goods" means all of the equipment, machinery, and/or other materials that the supplier is required to supply to the purchaser under the contract.
- 1.16 "Imported content" means that portion of the bidding price have been or are still To be imported (whether by the supplier or his subcontractors) and which costs Are inclusive of the costs abroad, plus freight and other direct importation costs such as landing costs, dock dues, import duty, sales duty or other similar tax or

duty at the South African place of entry as well as transportation and handling charges to the Factory in the Republic where the goods covered by the bid will be manufactured.

- 1.17 "Local content" means that portion of the bidding price, which is not included in the imported content provided that local manufacture does take place.
- 1.18 "Manufacture" means the production of products in a factory using labour, materials, components and machinery and includes other related value-adding activities.
- 1.19 "Order" means an official written order issued for the supply of goods or works or the rendering of a service.
- 1.20 "Project site," where applicable, means the place indicated in bidding documents.
- 1.21 "Purchaser" means the organization purchasing the goods.
- 1.22 "Republic" means the Republic of South Africa.
- 1.23 "SCC" means the Special Conditions of Contract.
- 1.24 "Services" means those functional services ancillary to the Supply of the goods, such as transportation and any other incidental services, such as installation, commissioning, provision of technical assistance, training, catering, gardening, security, maintenance and other such obligations of the supplier covered under the contract.
- 1.25 "Supplier" means the successful bidder who is awarded the contract to maintain and administer the required and specified service(s) to the State.
- 1.26 "Tort" means in breach of contract.
- 1.27 "Turnkey" means a procurement process where one service provider assumes total responsibility for all aspects of the project and delivers the full end product service required by the contract.
- 1.28 "Written" or "in writing" means hand-written in ink or any form of electronic or mechanical writing.

## **2. Application**

- 2.1 These general conditions are applicable to all bids, contracts and orders including bids for functional and professional services (excluding professional services related to the building and construction industry), sales, hiring, letting and the granting or acquiring of rights, but excluding immovable property, unless otherwise indicated in the bidding documents.
- 2.2 Where applicable, special conditions of contract are also laid down to cover specific goods, services or works.
- 2.3 Where such special conditions of contract are in conflict with these general conditions, the special conditions shall apply.

## **3. General**

- 3.1 Unless otherwise indicated in the bidding documents, the purchaser shall not be liable for any expense incurred in the preparation and submission of a bid. Where applicable a nonrefundable fee for documents may be charged.
- 3.2 Invitations to bid are usually published in locally distributed news media and on the municipality/municipal entity website.

## **4. Standards**

- 4.1 The goods supplied shall conform to the standards mentioned in the bidding documents and specifications.

## **5. Use of contract documents and information inspection**

- 5.1 The supplier shall not, without the purchaser's prior written consent, disclose the contract, or any provision thereof, or any specification, plan, drawing, pattern,

sample, or information furnished by or on behalf of the purchaser in connection therewith, to any person other than a person employed by the supplier in the performance of the contract. Disclosure to any such employed person shall be made in confidence and shall extend only so far as may be necessary for purposes of such performance.

- 5.2 The supplier shall not, without the purchaser's prior written consent, make use of any document or information mentioned in GCC clause 5.1 except for purposes of performing the contract.
- 5.3 Any document, other than the contract itself mentioned in GCC clause 5.1 shall remain the property of the purchaser and shall be returned (all copies) to the purchaser on completion of the supplier's performance under the contract if so required by the purchaser.
- 5.4 The supplier shall permit the purchaser to inspect the supplier's records relating to the performance of the supplier and to have them audited by auditors appointed by the purchaser, if so required by the purchaser.

## **6. Patent Rights**

- 6.1 The supplier shall indemnify the purchaser against all third-party claims of infringement of patent, trademark, or industrial design rights arising from use of the goods or any part thereof by the purchaser.
- 6.2 When a supplier developed documentation / projects for the municipality / municipal entity, the intellectual, copy and patent rights or ownership of such documents or projects will vest in the municipality / municipal entity.

## **7. Performance security**

- 7.1 Within thirty (30) days of receipt of the notification of contract award, the successful bidder shall furnish to the purchaser the performance security of the amount specified in SCC.
- 7.2 The proceeds of the performance security shall be payable to the purchaser as compensation for any loss resulting from the supplier's failure to complete his obligations under the contract.
- 7.3 The performance security shall be denominated in the currency of the contract, or in a freely convertible currency acceptable to the purchaser and shall be in one of the following forms:
  - (a) a bank guarantee or an irrevocable letter of credit issued by a reputable bank located in the purchaser's country or abroad, acceptable to the purchaser, in the form provided in the bidding documents or another form acceptable to the purchaser; or
  - (b) a cashier's or certified cheque.
- 7.4 The performance security will be discharged by the purchaser and returned to the supplier not later than thirty (30) days following the date of completion of the supplier's performance obligations under the contract, including any warranty obligations, unless otherwise specified.

## **8. Inspections, tests and analyses**

- 8.1 All pre-bidding testing will be for the account of the bidder.
- 8.2 If it is a bid condition that goods to be produced or services to be rendered should at any stage be subject to inspections, tests and analyses, the bidder or contractor's premises shall be open, at all reasonable hours, for inspection by a representative of the purchaser or organization acting on behalf of the purchaser.
- 8.3 If there are no inspection requirements indicated in the bidding documents and no mention is made in the contract, but during the contract period it is decided that inspections shall be carried out, the purchaser shall itself make the necessary arrangements, including payment arrangements with the testing authority concerned.

- 8.4 If the inspections, tests and analyses referred to in clauses 8.2 and 8.3 show the goods to be in accordance with the contract requirements, the cost of the inspections, tests and analyses shall be defrayed by the purchaser.
- 8.5 Where the goods or services referred to in clauses 8.2 and 8.3 do not comply with the contract requirements, irrespective of whether such goods or services are accepted or not, the cost in connection with these inspections, tests or analyses shall be defrayed by the supplier.
- 8.6 Goods and services which are referred to in clauses 8.2 and 8.3 and which do not comply with the contract requirements may be rejected.
- 8.7 Any contract goods may on or after delivery be inspected, tested or analysed and may be rejected if found not to comply with the requirements of the contract. Such rejected goods shall be held at the cost and risk of the supplier who shall, when called upon, remove them immediately at his own cost and forthwith substitute them with goods, which do comply with the requirements of the contract. Failing such removal the rejected goods shall be returned at the suppliers cost and risk. Should the supplier fail to provide the substitute goods forthwith, the purchaser may, without giving the supplier further opportunity to substitute the rejected goods, purchase such goods as may be necessary at the expense of the supplier.
- 8.8 The provisions of clauses 8.4 to 8.7 shall not prejudice the right of the purchaser to cancel the contract on account of a breach of the conditions thereof, or to act in terms of Clause 22 of GCC.

## **9. Packing**

- 9.1 The supplier shall provide such packing of the goods as is required to prevent their damage or deterioration during transit to their final destination, as indicated in the contract. The packing shall be sufficient to withstand, without limitation, rough handling during transit and exposure to extreme temperatures, salt and precipitation during transit, and open storage. Packing, case size weights shall take into consideration, where appropriate, the remoteness of the goods' final destination and the absence of heavy handling facilities at all points in transit.
- 9.2 The packing, marking, and documentation within and outside the packages shall comply strictly with such special requirements as shall be expressly provided for in the contract, including additional requirements, if any, and in any subsequent Instructions ordered by the purchaser.

## **10. Delivery and documents**

- 10.1 Delivery of the goods and arrangements for shipping and clearance obligations, shall be made by the supplier in accordance with the terms specified in the Contract.

## **11. Insurance**

- 11.1 The goods supplied under the contract shall be fully insured in a freely Convertible currency against loss or damage incidental to manufacture or acquisition, transportation, storage and delivery in the manner specified.

## **12. Transportation**

- 12.1 Should a price other than an all-inclusive delivered price be required, this shall be specified.

## **13. Incidental Services**

- 13.1 The supplier may be required to provide any or all of the following services, including additional services, if any:
- (a) Performance or supervision of on-site assembly and/or commissioning of the supplied goods;



- (b) Furnishing of tools required for assembly and/or maintenance of the supplied goods;
- (c) Furnishing of a detailed operations and maintenance manual for each appropriate unit of the supplied goods;
- (d) performance or supervision or maintenance and/or repair of the supplied goods, for a period of time agreed by the parties, provided that this service shall not relieve the supplier of any warranty obligations under this contract; and
- (e) Training of the purchaser's personnel, at the supplier's plant and/or on-site, in assembly, start-up, operation, maintenance, and/or repair of the supplied goods.

13.2 Prices charged by the supplier for incidental services, if not included in the contract price for the goods, shall be agreed upon in advance by the parties and shall not exceed the prevailing rates charged to other parties by the supplier for similar services.

#### **14. Spare parts**

14.1 As specified, the supplier may be required to provide any or all of the following materials, notifications, and information pertaining to spare parts manufactured or distributed by the supplier:

- (a) such spare parts as the purchaser may elect to purchase from the supplier, provided that this election shall not relieve the supplier of any warranty obligations under the contract; and;
- (b) in the event of termination of production of the spare parts:
  - (i) advance notification to the purchaser of the pending termination, in sufficient time to permit the purchaser to procure needed requirements; and
  - (ii) following such termination, furnishing at no cost to the purchaser, the blueprints, drawings, and specifications of the spare parts, if requested.

#### **15. Warranty**

15.1 The supplier warrants that the goods supplied under the contract are new, unused, of the most recent or current models, and that they incorporate all recent improvements in design and materials unless provided otherwise in the contract. The supplier further warrants that all goods supplied under this contract shall have no defect, arising from design, materials, or workmanship (except when the design and/or material is required by the purchaser's specifications) or from any act or omission of the supplier, that may develop under normal use of the supplied goods in the conditions prevailing in the country of final destination.

15.2 This warranty shall remain valid for twelve (12) months after the goods, or any portion thereof as the case may be, have been delivered to and accepted at the final destination indicated in the contract, or for eighteen (18) months after the date of shipment from the port or place of loading in the source country, whichever period concludes earlier, unless specified otherwise.

15.3 The purchaser shall promptly notify the supplier in writing of any claims arising under this warranty.

15.4 Upon receipt of such notice, the supplier shall, within the period specified and with all reasonable speed, repair or replace the defective goods or parts thereof, without costs to the purchaser.

15.5 If the supplier, having been notified, fails to remedy the defect(s) within the period specified, the purchaser may proceed to take such remedial action as may be necessary, at the supplier's risk and expense and without prejudice to any other rights which the purchaser may have against the supplier under the contract.

#### **16. Payment**

16.1 The method and conditions of payment to be made to the supplier under this contract shall be specified.

16.2 The supplier shall furnish the purchaser with an invoice accompanied by a copy of the delivery note and upon fulfillment of other obligations stipulated in the contract.

16.3 Payments shall be made promptly by the purchaser, but in no case later than thirty (30) days after submission of an invoice or claim by the supplier.

16.4 Payment will be made in Rand unless otherwise stipulated.

## **17. Prices**

17.1 Prices charged by the supplier for goods delivered and services performed under the contract shall not vary from the prices quoted by the supplier in his bid, with the exception of any price adjustments authorized or in the purchaser's request for bid validity extension, as the case may be.

## **18. Variation orders**

18.1 In cases where the estimated value of the envisaged changes in purchase does not vary more than 15% of the total value of the original contract, the contractor may be instructed to deliver the goods or render the services as such. In cases of measurable quantities, the contractor may be approached to reduce the unit price, and such offers may be accepted provided that there is no escalation in price.

## **19. Assignment**

19.1 The supplier shall not assign, in whole or in part, its obligations to perform under the contract, except with the purchaser's prior written consent.

## **20. Subcontracts**

20.1 The supplier shall notify the purchaser in writing of all subcontracts awarded under this contracts if not already specified in the bid. Such notification, in the original bid or later, shall not relieve the supplier from any liability or obligation under the contract.

## **21. Delays in the supplier's performance**

21.1 Delivery of the goods and performance of services shall be made by the supplier in accordance with the time schedule prescribed by the purchaser in the contract.

21.2 If at any time during performance of the contract, the supplier or its subcontractor(s) should encounter conditions impeding timely delivery of the goods and performance of services, the supplier shall promptly notify the purchaser in writing of the fact of the delay, its likely duration and its cause(s). As soon as practicable after receipt of the supplier's notice, the purchaser shall evaluate the situation and may at his discretion extend the supplier's time for performance, with or without the imposition of penalties, in which case the extension shall be ratified by the parties by amendment of contract.

21.3 The right is reserved to procure outside of the contract small quantities or to have minor essential services executed if an emergency arises, the supplier's point of supply is not situated at or near the place where the goods are required, or the supplier's services are not readily available.

21.4 Except as provided under GCC Clause 25, a delay by the supplier in the performance of its delivery obligations shall render the supplier liable to the imposition of penalties, pursuant to GCC Clause 22, unless an extension of time is agreed upon pursuant to GCC Clause 22.2 without the application of penalties.

21.5 Upon any delay beyond the delivery period in the case of a goods contract, the purchaser shall, without cancelling the contract, be entitled to purchase goods of a similar quality and up to the same quantity in substitution of the goods not supplied in conformity with the contract and to return any goods delivered later at the supplier's expense and risk, or to cancel the contract and buy such goods as may be required to complete the contract and without prejudice to his other rights, be entitled to claim damages from the supplier.

## **22. Penalties**

22.1 Subject to GCC Clause 25, if the supplier fails to deliver any or all of the goods or to perform the services within the period(s) specified in the contract, the purchaser shall, without prejudice to its other remedies under the contract, deduct from the contract price, as a penalty, a sum calculated on the delivered price of the delayed goods or unperformed services using the current prime interest rate calculated for each day of the delay until actual delivery or performance. The purchaser may also consider termination of the contract pursuant to GCC Clause 23.

## **23. Termination for default**

23.1 The purchaser, without prejudice to any other remedy for breach of contract, by written notice of default sent to the supplier, may terminate this contract in whole or in part:

(a) if the supplier fails to deliver any or all of the goods within the period(s) specified in the contract, or within any extension thereof granted by the purchaser pursuant to GCC Clause 21.2;

(b) if the supplier fails to perform any other obligation(s) under the contract; or

(c) if the supplier, in the judgement of the purchaser, has engaged in corrupt or fraudulent practices in competing for or in executing the contract.

23.2 In the event the purchaser terminates the contract in whole or in part, the purchaser may procure, upon such terms and in such manner, as it deems appropriate, goods, works or services similar to those undelivered, and the supplier shall be liable to the purchaser for any excess costs for such similar goods, works or services. However, the supplier shall continue performance of the contract to the extent not terminated.

23.3 Where the purchaser terminates the contract in whole or in part, the purchaser may decide to impose a restriction penalty on the supplier by prohibiting such supplier from doing business with the public sector for a period not exceeding 10 years.

23.4 If a purchaser intends imposing a restriction on a supplier or any person associated with the supplier, the supplier will be allowed a time period of not more than fourteen (14) days to provide reasons why the envisaged restriction should not be imposed. Should the supplier fail to respond within the stipulated fourteen (14) days the purchaser may regard the supplier as having no objection and proceed with the restriction.

23.5 Any restriction imposed on any person by the purchaser will, at the discretion of the purchaser, also be applicable to any other enterprise or any partner, manager, director or other person who wholly or partly exercises or exercised or may exercise control over the enterprise of the first-mentioned person, and with which enterprise or person the first-mentioned person, is or was in the opinion of the purchaser actively associated.

23.6 If a restriction is imposed, the purchaser must, within five (5) working days of such imposition, furnish the National Treasury, with the following information:

(i) the name and address of the supplier and / or person restricted by the purchaser;

(ii) the date of commencement of the restriction

(iii) the period of restriction; and

(iv) the reasons for the restriction.

These details will be loaded in the National Treasury's central database of suppliers or persons prohibited from doing business with the public sector.

23.7. If a court of law convicts a person of an offence as contemplated in sections 12 or 13 of the Prevention and Combating of Corrupt Activities Act, No. 12 of 2004, the court may also rule that such person's name be endorsed on the Register for Bid Defaulters. When a person's name has been endorsed on the Register, the person will be prohibited from doing business with the public sector for a period not less than five years and not more than 10 years. The National Treasury is empowered to determine the period of restriction and each case will be dealt with on its own merits. According to section 32 of the Act the Register must be open to the public. The Register can be perused on the National Treasury website.

## **24. Antidumping and countervailing duties and rights**

24.1 When, after the date of bid, provisional payments are required, or anti-dumping or countervailing duties are imposed, or the amount of a provisional payment or anti-dumping or countervailing right is increased in respect of any dumped or subsidized import, the State is not liable for any amount so required or imposed, or for the amount of any such increase. When, after the said date, such a provisional payment is no longer required or any such anti-dumping or countervailing right is abolished, or where the amount of such provisional payment or any such right is reduced, any such favorable difference shall on demand be paid forthwith by the supplier to the purchaser or the purchaser may deduct such amounts from moneys (if any) which may otherwise be due to the supplier in regard to goods or services which he delivered or rendered, or is to deliver or render in terms of the contract or any other contract or any other amount which may be due to him.

## **25. Force Majeure**

25.1 Notwithstanding the provisions of GCC Clauses 22 and 23, the supplier shall not be liable for forfeiture of its performance security, damages, or termination for default if and to the extent that his delay in performance or other failure to perform his obligations under the contract is the result of an event of force majeure.

25.2 If a force majeure situation arises, the supplier shall promptly notify the purchaser in writing of such condition and the cause thereof. Unless otherwise directed by the purchaser in writing, the supplier shall continue to perform its obligations under the contract as far as is reasonably practical, and shall seek all reasonable alternative means for performance not prevented by the force majeure event.

## **26. Termination for insolvency**

26.1 The purchaser may at any time terminate the contract by giving written notice to the supplier if the supplier becomes bankrupt or otherwise insolvent. In this event, termination will be without compensation to the supplier, provided that such termination will not prejudice or affect any right of action or remedy, which has accrued or will accrue thereafter to the purchaser.

## **27. Settlement of Disputes**

27.1 If any dispute or difference of any kind whatsoever arises between the purchaser and the supplier in connection with or arising out of the contract, the parties shall make every effort to resolve amicably such dispute or difference by mutual consultation.

27.2 If, after thirty (30) days, the parties have failed to resolve their dispute or difference by such mutual consultation, then either the purchaser or the supplier may give notice to the other party of his intention to commence with mediation. No mediation in respect of this matter may be commenced unless such notice is given to the other party.

27.3 Should it not be possible to settle a dispute by means of mediation, it may be settled in a South African court of law.

27.4 Notwithstanding any reference to mediation and/or court proceedings herein, (a) the parties shall continue to perform their respective obligations under the contract unless they otherwise agree; and (b) the purchaser shall pay the supplier any monies due the supplier for goods delivered and / or services rendered according to the prescripts of the contract.

## **28. Limitation of Liability**

28.1 Except in cases of criminal negligence or willful misconduct, and in the case of infringement pursuant to Clause 6;

(a) the supplier shall not be liable to the purchaser, whether in contract, tort, or otherwise, for any indirect or consequential loss or damage, loss of use, loss of production, or loss of profits or interest costs, provided that this exclusion shall not apply to any obligation of the supplier to pay penalties and/or damages to the purchaser; and

(b) the aggregate liability of the supplier to the purchaser, whether under the contract, in tort or otherwise, shall not exceed the total contract price, provided that this limitation shall not apply to the cost of repairing or replacing defective equipment.

## **29. Governing language**

29.1 The contract shall be written in English. All correspondence and other documents pertaining to the contract that is exchanged by the parties shall also be written in English.

## **30. Applicable law**

30.1 The contract shall be interpreted in accordance with South African laws, unless otherwise specified.

## **31. Notices**

31.1 Every written acceptance of a bid shall be posted to the supplier concerned by registered or certified mail and any other notice to him shall be posted by ordinary mail to the address furnished in his bid or to the address notified later by him in writing and such posting shall be deemed to be proper service of such notice.

31.2 The time mentioned in the contract documents for performing any act after such aforesaid notice has been given, shall be reckoned from the date of posting of such notice.

## **32. Taxes and duties**

32.1 A foreign supplier shall be entirely responsible for all taxes, stamp duties, license fees, and other such levies imposed outside the purchaser's country.

32.2 A local supplier shall be entirely responsible for all taxes, duties, license fees, etc., incurred until delivery of the contracted goods to the purchaser.

32.3 No contract shall be concluded with any bidder whose tax matters are not in order. Prior to the award of a bid SARS must have certified that the tax matters of the preferred bidder are in order.

32.4 No contract shall be concluded with any bidder whose municipal rates and taxes and municipal services charges are in arrears.

## **33. Transfer of contracts**

33.1 The contractor shall not abandon, transfer, cede assign or sublet a contract or part thereof without the written permission of the purchaser

## **34. Amendment of contracts**

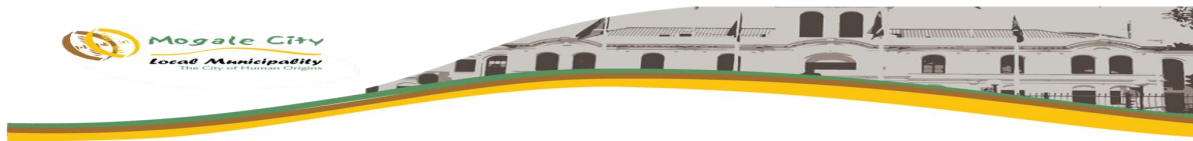
34.1 No agreement to amend or vary a contract or order or the conditions, stipulations or provisions thereof shall be valid and of any force unless such agreement to amend or vary is entered into in writing and signed by the contracting parties. Any waiver of the requirement that the agreement to amend or vary shall be in writing, shall also be in writing.

## **35. Prohibition of restrictive practices:**

35.1 In terms of section 4 (1) (b) (iii) of the Competition Act No. 89 of 1998, as amended, an agreement between, or concerted practice by, firms, or a decision by an association of firms, is prohibited if it is between parties in a horizontal relationship and if a bidder(s) is / are or a contractor(s) was / were involved in collusive bidding.

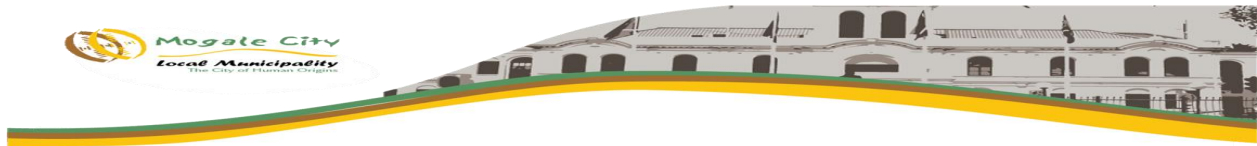
35.2 If a bidder(s) or contractor(s) based on reasonable grounds or evidence obtained by the purchaser has / have engaged in the restrictive practice referred to above, the purchaser may refer the matter to the Competition Commission for investigation and possible imposition of administrative penalties as contemplated in section 59 of the Competition Act No 89 Of 1998.

35.3 If a bidder(s) or contractor(s) has / have been found guilty by the Competition Commission of the restrictive practice referred to above, the purchaser may, in addition and without prejudice to any other remedy provided for, invalidate the bid(s) for such item(s) offered, and / or terminate the contract in whole or part, and / or restrict the bidder(s) or contractor(s) from conducting business with the public sector for a period not exceeding ten (10) years and / or claim damages from the bidder(s) or contractor(s) concerned



## **BIDDERS TO BE EVALUATED ON FUNCTIONALITY**

- (1) An organ of state must state in the bid documents if the bid will be evaluated on functionality.
- (2) The evaluation criteria for measuring functionality must be objective.
- (3) The bid documents must specify-
  - (a) the evaluation criteria for measuring functionality;
  - (b) the points for each criteria and, if any, each sub-criterion; and
  - (c) the minimum qualifying score for functionality.
- (4) The minimum qualifying score for functionality for a bid to be considered further-
  - (a) must be determined separately for each bid; and
  - (b) may not be so-
    - (i) low that it may jeopardise the quality of the required goods or services; or
    - (ii) high that it is unreasonably restrictive.
- (5) Points scored for functionality must be rounded off to the nearest two decimal places.
- (6) A bid that fails to obtain the minimum qualifying score for functionality as indicated in the bid documents is not an acceptable bid.



**TENDERS ARE HEREBY INVITED FROM SERVICE PROVIDER/S FOR THE SUPPLY, DELIVERY AND OFF-LOADING OF VARIOUS GALVANIZED STEEL TRAFFIC SIGNAL POLES, ELECTRICITY DISTRIBUTION POLES AND PUBLIC LIGHTING POLES THAT ARE LOCALLY MANUFACTURED WITH A STIPULATED MINIMUM THRESHOLD OF 100% LOCAL PRODUCTION AND CONTENT AT THE MUNICIPAL STORES AT CHAMDOR ON AN AS AND WHEN REQUIRED BASIS FOR A THREE (3) YEARS PERIOD FOR MOGALE CITY LOCAL MUNICIPALITY.**

**1. PURPOSE**

Mogale City Local Municipality requests the appointment of service provider/s for the supply, delivery and off-loading of various galvanized steel traffic signal poles, electricity distribution poles and public lighting poles at the Chamdor Municipal Stores on an as and when required basis for three (3) years.

**2. DELIVERY LOCATION AND LEAD TIME**

Municipal Stores: Technical Services Yard, Tudor Road, Chamdor, Krugersdorp, (between 8:00 and 15:30 on weekdays).

All materials will be delivered and off-loaded within six (6) weeks after receipt of the Purchase Order.

**3. SCOPE OF WORK**

This contract provides for the supply, delivery and off-loading of various galvanized steel traffic signal poles, electricity distribution poles and public lighting poles at Municipal Stores on an as and when required basis for three (3) years.

**4. REQUIREMENTS**

No guarantee of any quantities can be given, and the service provider will be required to supply the items under this contract, on an as and when required basis and in such quantities as may be required during the period of this contract but not exceeding the approved budget and available funds.

**5. CONTRACT PRICE ADJUSTMENT**

Should the bid prices be subject to contract price adjustments (CPA) during the contract period for raw materials, an annual rates increase on all items will be allowed to increase by a Producer Price Index (PPI) as published by the Statistics South Africa (StatsSA) or the bid shall include details for calculating adjustments in accordance with an industrially recognized contract price adjustment formula, such as that of Steel and Engineering Industries federation of South Africa (SEIFSA).

**Should no price adjustment or variation clauses be included in the tender documents, the prices tendered will be considered as being firm and the Council will not, under any circumstances, accept, in its account, any increase in the prices tendered during the duration of the contract.**

**NOTE: that** consumer price indices to be used with the **SEIFSA formula** based on those published two months prior to the month of bid closing; as an example, own manufacture price increase shall not be accepted as a form of cost price adjustment.

**6. CESSION OR ASSIGNMENT**

Neither the municipality nor the tenderer shall cede or assign a contract for the delivery of goods or the rendering of services or any part thereof or any benefit or interest therein or there under to third parties without the written consent of the other party.

**7. REQUIREMENTS FOR ORDERS**

It is the requirement of Mogale City that during the period of the contract, official orders will be placed with the service providers through a service request or a purchase order. Orders that are signed or authorised by the Executive Manager Infrastructure Development Services (EM: IDS) or his/her delegated official.

**8. PRICE**

Prices quoted must include VAT (where applicable) for the supply, delivery and off-loading of various poles at the Municipal Stores.

The tenderer will be required to submit all documentation and calculations involved in the CPA increases in this tender as outlined in paragraph 3.

**9. SPECIAL CONDITIONS AND REQUIREMENTS FOR THIS BID**

9.1 More than service provider may be appointed.

9.2 Manufacturers are to provide a copy of certificate for ISO 9001: 2015 or latest Quality Management System from SANAS accredited Certification body on the design and manufacturing of lighting and steel structures.

9.3 If distributor or supplier: - A letter of intent on signed company letterhead of a manufacturer with ISO 9001:2000 or latest certificate (letter of intent must be accompanied by the relevant ISO certification).

9.4 In relation with the manufacturing process, it is essential to verify that large orders can be accommodated and thus a complete verification of the plant and equipment is required and must be included in this tender. Distributors must also have the necessary correspondence including confirmation that such a distributor has been appointed as a distributor of this type of equipment from a specific manufacturer and in addition confirmation of the above condition.

9.5 Subject to GCC Clause 25, if the supplier fails to deliver any of the goods, or to perform the services within the period(s) specified in the contract, the purchaser shall, without prejudice to its other remedies under the contractor, deduct from the contract price, as penalty, a sum calculated on the delivered price of the delayed goods or unperformed services using the current prime interest rate calculated for each day of the delay until actual delivery or performance. The purchaser may also consider termination of the contract pursuant to GCC Clause 23.

***ALL OF THESE CONDITIONS MUST BE ADHERED TO,  
FAILURE TO SUBMIT THIS INFORMATION WILL  
LEAD TO DISQUALIFICATION***



## 10. SPECIFICATION

### 10.1 NORMATIVE REFERENCES

The following documents contain provisions that, through reference in the text, constitute requirements of this specification. At the time of the publication, the editions indicated were valid. All standards and specifications are subject to revision, and parties to agreements based on this specification are encouraged to investigate the possibility of applying the most recent editions of the documents listed below.

SABS 044:1983	Welding – the fusion welding of steel
SABS 0198: 1988	The selection, handling and installation of electric power cables of rating not exceeding 33kV
SABS 657-1:1989	Steel tubes for scaffolding and for structural and general engineering purposes.
SABS 1063:1998	Earthing rods, couplers and clamps.
SANS 1088:2004	Luminaire entries and spigots.
SANS 1418-1:2009	Aerial bundled conductor systems.
SANS 182-1:2008	Conductors for overhead electrical transmission lines
SABS ISO 1461:2000	Hot-dip (galvanized) zinc coatings.
SABS 064	Preparation for painting (galvanizing)

### 10.2 DEFINITIONS AND ABBREVIATIONS

The terms, definitions and abbreviations of specifications listed in Normative References shall apply to this specification.

### 10.3 REQUIREMENTS

#### 10.3.1 GENERAL

- All poles shall comply fully with the requirements of SANS 10225 in this specification.
- The poles shall be suitable for use at a mean altitude of 1800m above sea level in an environment subject to heavy pollution at ambient temperatures of -15°C to 65°C.
- The poles will be installed in locations subject to high wind loading and high lightning ground flash density (>10 flashes/km<sup>2</sup>/year)
- The poles shall be designed, approved and certified by an individual who is professionally registered with the Engineering Council as a structural engineer in accordance with SANS 10225 and manufactured from new materials.

### **10.3.2 DESIGN**

- The steel tubes used shall comply fully with SABS 657-1
- The poles shall be manufactured of grade S355MH steel, with a minimum yield stress of 355Mpa and a minimum tensile strength of 450Mpa, in accordance with SABS 657.
- The public lighting poles should be designed to carry luminaries and spigots as specified in clause 12 and carry low voltage aerial bundle conductor- (95mm<sup>2</sup> X 3 core + BN) in accordance with SANS 1418. Tenderers are required to consult these documents for accurate information concerning the characteristics of these conductors. Traffic light poles should be designed to carry the different types of aspects as specified in clause 9 to 11
- The steel poles, when loaded as detailed above, shall be capable of withstanding fluctuating wind load in accordance with the requirements of the SANS 10225. the terrain category shall be Category 3, and the wind velocity shall be 40ms<sup>-1</sup>. The force coefficient Cf=1.5.
- The horizontal and vertical deflections shall not exceed any requirements of SANS 10225.
- The design of each pole shall be accompanied by comprehensive strength calculations certified by a qualified professional structural engineer. As this engineer will take full responsibility for the design of the poles, he or she is free to deviate from the drawings supplied for structural reasons.
- For instance, the structural engineer may feel that the strength of a particular pole is inadequate, and he or she is therefore at liberty to increase the pole thickness or diameter, etc. These changes must be detailed in the strength calculations supplied.
- The expected life span of all items on this contract will be a minimum of 30 years, and all measures and specifications will be taken to attain this life span.

### **10.3.3 DESIGN CRITERIA**

- Traffic signal poles shall be designed detailed in clause 9 to clause 11, except for the access opening on each traffic signal pole, which shall be designed as specified in clause 8.2.4. The attached are provided for reference, however, updated and more advanced designs will be accepted. Designs and strength calculations done by a qualified professional structural engineer shall accompany the bid.
- Public lighting poles shall be designed as detailed in clause 12. Designs and strength calculations done by a qualified professional structural engineer shall accompany the bid.
- Public lighting pole brackets and spigots shall be designed as per the attached drawings that are labelled as follows:
  - I. K12 Streetlight arm
  - II. K13/1 Spigot 2-way Streetlight bracket
  - III. K47 Streetlight bracket
  - IV. K13 Streetlight bracket

#### **10.3.4 SLEEVES/ACCESS AND OPENING**

- Public lighting poles must have an anti-corrosion sleeve. The sleeve must be 4 mm thick and 600 mm long and must be welded 300mm above ground level and 300mm below ground level when planted at the correct depth.
- An access opening, 500mm from the pole's ground level shall be provided, the opening shall be 300mm long x 100mm wide. The access opening shall be covered by a 4mm thick sleeve type vandal proof cover that can only be opened by means of a special tool unique to Mogale City Local Municipality. The design of this access opening cover and locking mechanism shall be submitted with the bid.

#### **10.3.5 JOINTS**

- Special attention must be paid to joints. All changes in diameter shall be by means of swaging or continuous tapering. Under no circumstances will welded pieces (pipe reducers) inserted into the poles be accepted. All joints shall be bevelled prior to welding and shall present a symmetrical appearance after welding. In addition, all joints shall be designed and manufactured to ensure that there is no ingress of water into the interior of the pole. All welding shall be continuous and in compliance with SABS 044, Parts 1 to 4. All welding shall be dressed where necessary.

#### **10.3.6 GALVANISING**

- After manufacturing is complete, but before galvanizing may commence, pole shall have all weld slag removed by shot- or sand – blasting and a visual inspection shall be carried out to ensure the efficiency of this operation. In addition, the poles shall be internally and externally degreased and all grit, loose rust, welding flux and spatter, rough edges and burns shall be removed.
- All poles shall be hot dip galvanized in accordance with SABS ISO 1461. the minimum thickness of the zinc layer shall be 90µm. The process used shall comply completely with the requirements of SABS ISO 1461.
- No material may be removed from the pole either mechanically or chemically after galvanizing has been carried out. All items shall be protected against corrosion by either hot dip galvanizing as detailed above or by manufacture of stainless steel. All possibility of galvanic action shall be avoided.
- Should no such details be submitted, the tender will be deemed to be in full compliance with specification SABS ISO 1461:2000 and a certificate to this effect may be requested before acceptance of the poles. The poles shall be manufactured in such a way that they have an elegant, tapered construction or be of a stepped tubular design.

#### **10.3.7 STATUTORY REQUIREMENTS**

- All poles and details offered against this specification should comply in all aspects to the requirements and intentions of the latest edition of the Occupational Health and Safety Act and Regulations of the Republic of South Africa, where applicable.

#### **10.3.8 QUALITY AND STANDARDS**

- All material offered shall be unused material and shall comply with relative specifications of the South African Bureau of Standards in the first instance, where such specifications apply, or with the British Standards Institute, where either of the above standards are listed in this specification.

#### **10.3.9 DRAWINGS AND DESIGN CALCULATIONS**

- The tenderer is to supply detailed drawings and calculations of the poles offered, for approval before manufacture commences. These calculations shall indicate the Factors of Safety applied.

#### **10.3.10 INSPECTION AND TESTING**

- In addition to the requirements listed below, all poles shall comply with the test requirements of the SABS regulations published.
- Access to the site of manufacture of the poles will at reasonable times be granted to Council officials for inspection purposes. Notwithstanding the fact that the poles are approved it does not indemnify the supplier against any latent defect that may be evident at a later stage.
- The Mogale City Local Municipality may appoint an independent test authority to act on its behalf. This inspection authority shall be allowed free access to any place where work for this contract is carried out, whether on site or at the place of manufacture.
- The tenderer shall carry out tests required by the inspection authority. The tests will be within the ambit of SABS 0198, SANS 10225 and SABS ISO 1461.
- The Mogale City Local Municipality or the appointed authority may also require the welding on 10% of the poles to be radio-graphed and evaluated. The maximum width of any isolated slag inclusion shall not exceed 3mm, and the total length of isolated slag inclusion in any continuous length to weld shall not exceed 4% of the length of that weld. In addition, no more than four isolated slag inclusions of a maximum width of 3mm in this length shall be permitted.
- In addition to the above, no cracks shall be permitted. Penetration, lack of fusion, undercutting and porosity shall receive attention.
- The cost of the initial testing will be borne by the Mogale City Local Municipality. In the event of any further testing arising out of any item failing a test, the cost of the further testing will be borne by the tenderer.
- In the event of a pole failing the test, the entire consignment of poles shall be radio-graphed at the tenderer's expense. The pole will be individually accepted or rejected on the basis of these radiographs
- None of these provisions free the tenderer from any of the inspection and quality control requirements of SABS 0198, SANS 10225 and SABS ISO 1461.

#### **10.3.11 GUARANTEE**

- All poles shall be guaranteed for a period of 12 months against faulty material and/or faulty workmanship rust etc.

## **11. TYPES OF TRAFFIC SIGNAL LIGHT POLES**

### **11.1 STANDARD TRAFFIC LIGHT POLES (K 61)**

#### **11.1.1 CONSTRUCTION**

- The poles shall be 114 mm diameter by 3.3 m long. When installed the pole top shall be 3.3 m from pavement level as only the foundation frame will be installed below ground level.
- A robust foundation frame complete with foundation bolts, nuts and cable duct shall be supplied with each pole.
- The base of the pole must be designed to fracture on impact without damaging the foundation or foundation frame to facilitate maintenance. Provision must be made to earth the top of the pole with a 10 mm set screw and nut.

#### **11.1.2 MATERIAL**

The pole shall be manufactured from first grade steel tubing, adequately rated for the maximum loading due to the fixed mass as well as wind load. No butt or longitudinal welds will be permitted.

#### **11.1.3 FINISH**

The pole must be thoroughly cleaned, primed and spray painted with golden yellow enamel paint.

#### **11.1.4 STANDARD POLE FOUNDATION FRAME**

##### **11.1.4.1 CONSTRUCTION**

The foundation frame shall consist of four “feet”, bent and welded together to form a cage. The top of the cage shall be punched with four, 16 mm bolt holes. The PCD of the four bolt holes shall be the same as that of the mounting holes on the flange of the standard 3,3 m traffic light pole utilised by Mogale City Municipality. The height of the foundation frame shall be no less than 450 mm.

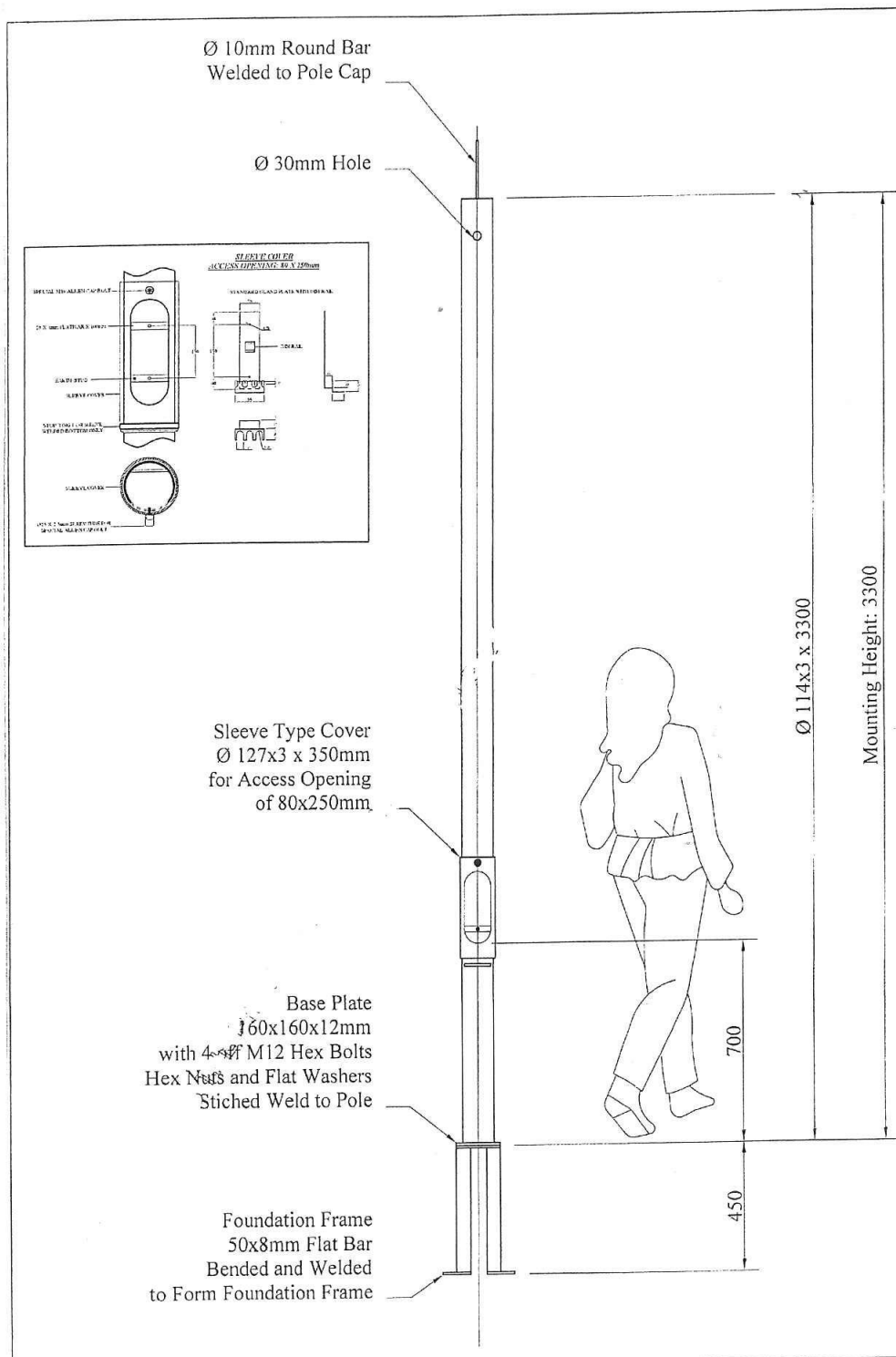
##### **11.1.4.2 MATERIAL**

The foundation frame shall be manufactured from first-grade mild steel. 50 mm × 8 mm flat bar shall be utilised.

##### **11.1.4.3 FINISH**

The foundation frame shall be hot dip galvanised. All welds shall be neat and thoroughly cleaned before galvanising.

# ROBOT POLE K 61



Client:	Mogale City	Drawn By:		Pole Weight:	50kg	Customers Approval:	
Description:	3.3m M/II Traffic Signal Pole with Foundation Frame	Drawn Date:	17-06-2015	Reference No:	K 61	Approval Date:	
<p>Note:</p> <ol style="list-style-type: none"> <li>1. All poles swaged down no reducers used</li> <li>2. Designing of poles to new SANS 10225:2012</li> <li>3. All tubing to SANS 657-1-2004 Grade S355</li> <li>4. Fabrication to SANS 10214-1987</li> <li>5. Galvanizing to SANS 121 (ISO 1461)-1987-1</li> <li>6. Welding to SANS 10044 Part i, ii, iii, iv</li> <li>7. Minimum wall thickness at swage 3mm</li> <li>8. spigon swaged down and not welded in</li> <li>9. Pole design in accordance with our interpretation of the information provided. It is the clients responsibility to ensure it meets with required specification and design</li> <li>10. THIS DRAWING AND ILLUSTRATED DESIGN ARE THE PROPERTY OF INDUSTRIAL POLES &amp; MASTS AND MAY NOT BE COPIED OR DISTRIBUTED</li> </ol>							

## **11.2 TOTEM TRAFFIC LIGHT POLES (K 62)**

### **11.2.1 CONSTRUCTION**

The pole shall be designed to support signals at standard height, as well as supplementary signals at the top of the extended pole. When traffic lights are mounted on the pole the minimum distance between the red signal, mounted at standard height, and the green signal, mounted at extended height, must not be less than 1 m even when four aspect traffic lights are used. When installed the pole shall not be less than 6.2 m from pavement level to the top of the pole. Traffic lights and background screens with a total mass of 100 kg and projected windage area of 2.6 m<sup>2</sup> will be fixed to the pole. The lower section of the pole shall have an outside diameter of at least 152 mm.

The pole shall be supplied complete with foundation frame, mounting bolts and levelling washers (conventional hook bolts are not acceptable). Fixing bolts for the pole as well as a cable duct must also be supplied.

### **11.2.2 MATERIAL**

The pole shall be manufactured from first grade steel tubing, adequately rated for the maximum loading due to the fixed mass as well as wind load. No butt or longitudinal welds will be permitted.

### **11.2.3 FINISH**

All parts, excluding the foundation frame, shall be thoroughly cleaned, primed and sprayed painted with golden yellow enamel. Fillet welds shall be neat and thoroughly cleaned before priming and painting.

## **11.2.4 TOTEM POLE FOUNDATION FRAME**

### **11.2.4.1 CONSTRUCTION**

The foundation frame shall consist of four "feet", bent and welded together to form a cage. The top of the cage shall be punched with four, 25 mm bolt holes. The PCD of the four bolt holes shall be the same as that of the mounting holes on the flange of the 5,1 m cantilever traffic light pole utilised by Mogale City Municipality. The height of the foundation frame shall be no less than 920 mm.

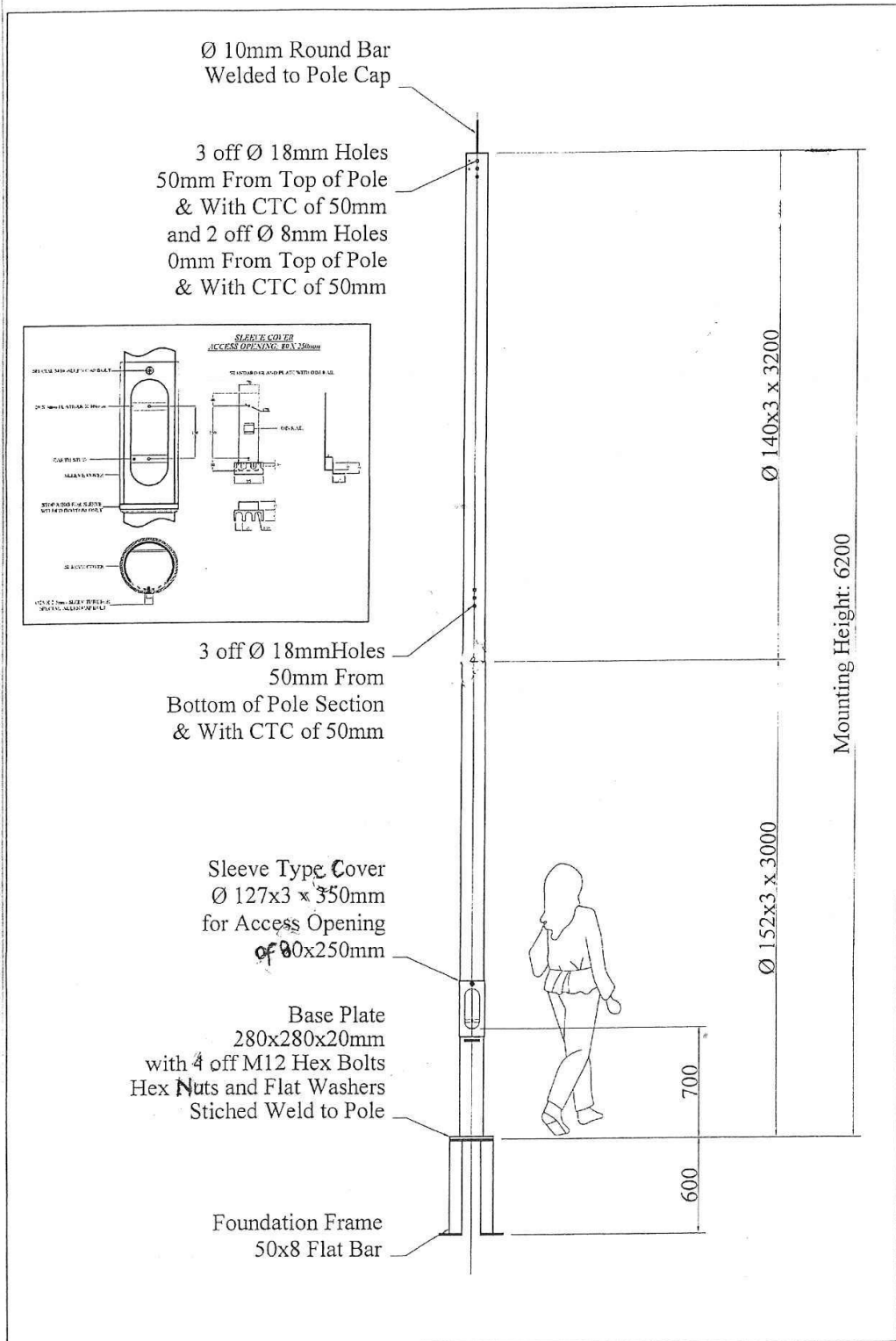
### **11.2.4.2 MATERIAL**

The foundation frame shall be manufactured from first-grade mild steel. 80mm × 10 mm flat bar shall be utilised.

### **11.2.4.3 FINISH**

The foundation frame shall be hot dip galvanised. All welds shall be neat and thoroughly cleaned before galvanising.

## ROBOT POLE K 62



Client:	Mogale City	Drawn By:	110kg	Customers Approval:
Description:	6.2m M/H Traffic Signal Pole with Foundation Frame	Drawn Date:	17-06-2015	Approval Date:
Note:		Reference No: K62		
1. All poles swaged down no reducers used		3. All tubing to SANS 657-1-2004 Grade S355		
2. Designing of poles to new SANS 10225:2012		4. Galvanizing to SANS 121 (ISO 1461)-1987-1		
3. Fabrication to SANS 10214-1987		5. Welding to SANS 10044 Part i, ii, iii, iv		
4. Minimum wall thickness at swage 3mm		6. Pole design in accordance with our interpretation of the information provided. It is the clients responsibility to ensure it meets with required specification and design		
5. Pole design in accordance with our interpretation of the information provided. It is the clients responsibility to ensure it meets with required specification and design				



### **11.3      THICK STANDARD POLE WITHOUT FOUNDATION FRAME (K 63)**

The robot pole should be according to the specification shown on the attached drawing.

#### **11.3.1 CONSTRUCTION**

The pole shall be designed to support signals at standard height, as well as supplementary signals at the top of the extended pole. When traffic lights are mounted on the pole the minimum distance between the red signal, mounted at standard height, and the green signal, mounted at extended height, must not be less than 1 m even when four aspect traffic lights are used. When installed the pole shall not be less than 4 m from pavement level to the top of the pole. Traffic lights and background screens with a total mass of 100 kg and projected windage area of 2.6 m<sup>2</sup> will be fixed to the pole. The lower section of the pole shall have an outside diameter of at least 162 mm.

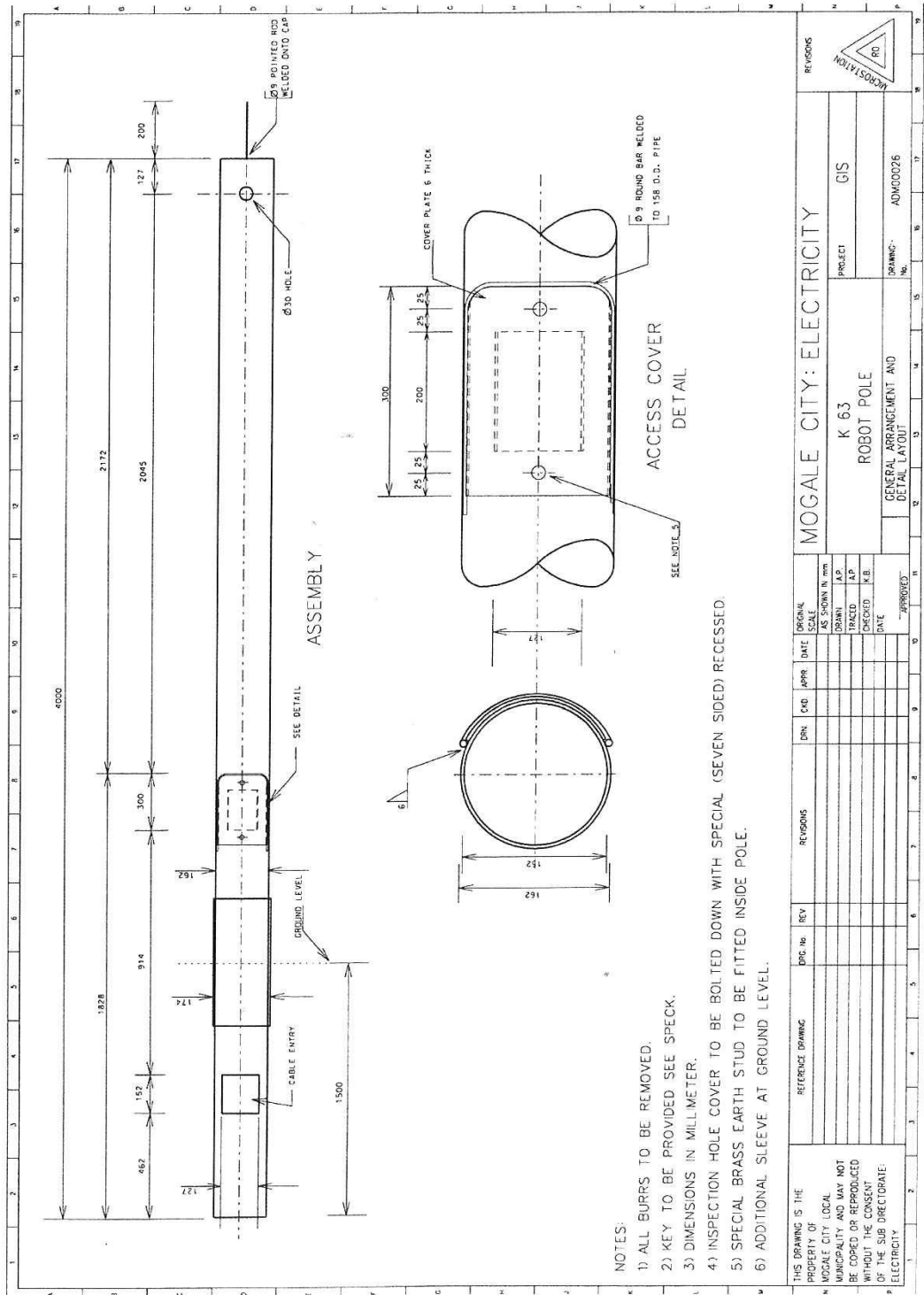
#### **11.3.2 MATERIAL**

The pole shall be manufactured from first grade steel tubing, adequately rated for the maximum loading due to the fixed mass as well as wind load. No butt or longitudinal welds will be permitted.

#### **11.3.3 FINISH**

All parts, excluding the foundation frame, shall be thoroughly cleaned, primed and spray painted with golden yellow enamel. Fillet welds shall be neat and thoroughly cleaned before priming and painting.

# ROBOT POLE K 63



MOGALE CITY: ELECTRICITY										REVISIONS	
K 63 ROBOT POLE										PROJECT GIS	
GENERAL ARRANGEMENT AND DETAIL LAYOUT										DRAWING No. ADM00026	
NO.	DESCRIPTION	DATE	BY	CHKD.	APPD.	DATE	SCALE	ORIGINAL	AS SHOWN IN	DATE	BY
1									AS SHOWN IN		
2									AS SHOWN IN		
3									AS SHOWN IN		
4									AS SHOWN IN		
5									AS SHOWN IN		
6									AS SHOWN IN		
7									AS SHOWN IN		
8									AS SHOWN IN		
9									AS SHOWN IN		
10									AS SHOWN IN		
11									AS SHOWN IN		
12									AS SHOWN IN		
13									AS SHOWN IN		
14									AS SHOWN IN		
15									AS SHOWN IN		
16									AS SHOWN IN		
17									AS SHOWN IN		
18									AS SHOWN IN		
19									AS SHOWN IN		
20									AS SHOWN IN		
21									AS SHOWN IN		
22									AS SHOWN IN		
23									AS SHOWN IN		
24									AS SHOWN IN		
25									AS SHOWN IN		
26									AS SHOWN IN		
27									AS SHOWN IN		
28									AS SHOWN IN		
29									AS SHOWN IN		
30									AS SHOWN IN		
31									AS SHOWN IN		
32									AS SHOWN IN		
33									AS SHOWN IN		
34									AS SHOWN IN		
35									AS SHOWN IN		
36									AS SHOWN IN		
37									AS SHOWN IN		
38									AS SHOWN IN		
39									AS SHOWN IN		
40									AS SHOWN IN		
41									AS SHOWN IN		
42									AS SHOWN IN		
43									AS SHOWN IN		
44									AS SHOWN IN		
45									AS SHOWN IN		
46									AS SHOWN IN		
47									AS SHOWN IN		
48									AS SHOWN IN		
49									AS SHOWN IN		
50									AS SHOWN IN		
51									AS SHOWN IN		
52									AS SHOWN IN		
53									AS SHOWN IN		
54									AS SHOWN IN		
55									AS SHOWN IN		
56									AS SHOWN IN		
57									AS SHOWN IN		
58									AS SHOWN IN		
59									AS SHOWN IN		
60									AS SHOWN IN		
61									AS SHOWN IN		
62									AS SHOWN IN		
63									AS SHOWN IN		
64									AS SHOWN IN		
65									AS SHOWN IN		
66									AS SHOWN IN		
67									AS SHOWN IN		
68									AS SHOWN IN		
69									AS SHOWN IN		
70									AS SHOWN IN		
71									AS SHOWN IN		
72									AS SHOWN IN		
73									AS SHOWN IN		
74									AS SHOWN IN		
75									AS SHOWN IN		
76									AS SHOWN IN		
77									AS SHOWN IN		
78									AS SHOWN IN		
79									AS SHOWN IN		
80									AS SHOWN IN		
81									AS SHOWN IN		
82									AS SHOWN IN		
83									AS SHOWN IN		
84									AS SHOWN IN		
85									AS SHOWN IN		
86									AS SHOWN IN		
87									AS SHOWN IN		
88									AS SHOWN IN		
89									AS SHOWN IN		
90									AS SHOWN IN		
91									AS SHOWN IN		
92									AS SHOWN IN		
93									AS SHOWN IN		
94									AS SHOWN IN		
95									AS SHOWN IN		
96									AS SHOWN IN		
97									AS SHOWN IN		
98									AS SHOWN IN		
99									AS SHOWN IN		
100									AS SHOWN IN		

## **11.4 TOTEM 2 TRAFFIC LIGHT POLES (K 64)**

### **11.4.1 CONSTRUCTION**

The pole shall be designed to support signals at standard height, as well as supplementary signals at the top of the extended pole. When traffic lights are mounted on the pole the minimum distance between the red signal, mounted at standard height, and the green signal, mounted at extended height, must not be less than 1 m even when four aspect traffic lights are used. When installed the pole shall not be less than 7 m from pavement level to the top of the pole. Traffic lights and background screens with a total mass of 100 kg and projected windage area of 2.6 m<sup>2</sup> will be fixed to the pole. The lower section of the pole shall have an outside diameter of at least 152 mm.

The pole shall be supplied complete with foundation frame, mounting bolts and levelling washers (conventional hook bolts are not acceptable). Fixing bolts for the pole as well as a cable duct must also be supplied.

### **11.4.2 MATERIAL**

The pole shall be manufactured from first grade steel tubing, adequately rated for the maximum loading due to the fixed mass as well as wind load. No butt or longitudinal welds will be permitted.

### **11.4.3 FINISH**

All parts, excluding the foundation frame, shall be thoroughly cleaned, primed and spray painted with golden yellow enamel paint. Fillet welds shall be neat and thoroughly cleaned before priming and painting.

## **11.4.4 TOTEM 2 POLE FOUNDATION FRAME**

### **11.4.4.1 CONSTRUCTION**

The foundation frame shall consist of four "feet", bent and welded together to form a cage. The top of the cage shall be punched with four, 25 mm bolt holes. The PCD of the four bolt holes shall be the same as that of the mounting holes on the flange of the 5,1 m cantilever traffic light pole utilised by Mogale City Municipality. The height of the foundation frame shall be no less than 920 mm.

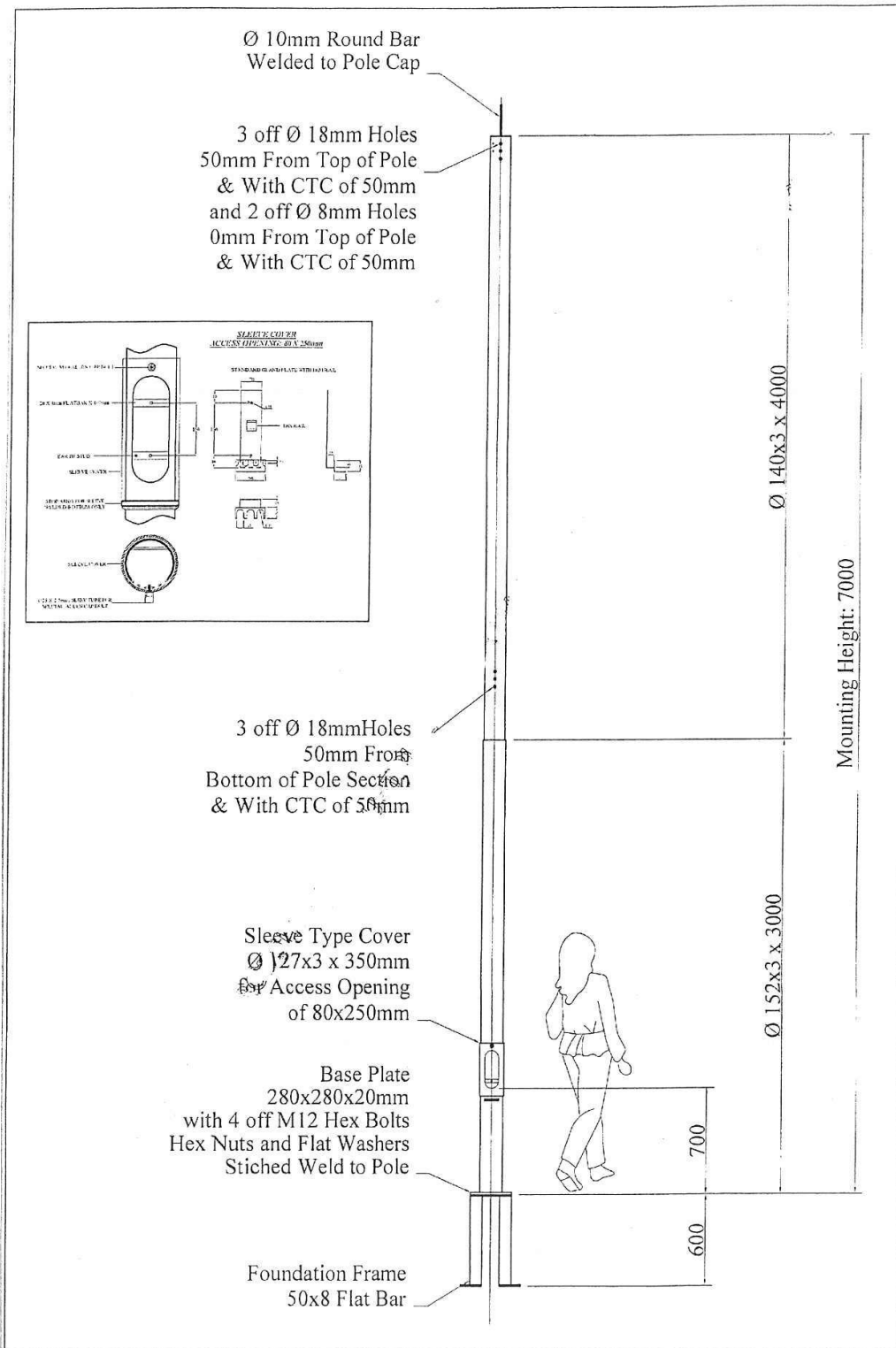
### **11.4.4.2 MATERIAL**

The foundation frame shall be manufactured from first-grade mild steel. 80 mm × 10 mm flat bar shall be utilised.

### **11.4.4.3 FINISH**

The foundation frame shall be hot dip galvanised. All welds shall be neat and thoroughly cleaned before galvanising.

## ROBOT POLE K 64



Client:	Mogale City	Drawn By:	Pole Weight:	Customers Approval:
Description:	7m M/H Traffic Signal Pole with Foundation Frame	Drawn Date:	Reverence No:	Approval Date:
		17-06-2015	K64	
<p>Notes:</p> <ol style="list-style-type: none"> <li>1. All poles swaged down no reducers used</li> <li>2. Designing of poles to new SANS 10225:2012</li> <li>3. All tubing to SANS 657-1-2004 Grade S355</li> <li>4. Fabrication to SANS 10214-1987</li> <li>5. Galvanizing to SANS 121 (ISO 1461)-1987-1</li> <li>6. Welding to SANS 1004-4 Part i, ii, iii, iv</li> <li>7. Minimum wall thickness at swage 3mm</li> <li>8. Spigot swaged down and not welded in</li> <li>9. Pole design in accordance with our interpretation of the information provided. It is the clients responsibility to ensure it meets with required specification and design</li> </ol>				

## **11.5 CANTILEVER TRAFFIC LIGHT POLES (K 65)**

### **11.5.1 CONSTRUCTION**

The pole shall be designed to support a fixed bracket 6.4 m above road level, overhanging 5 m from the vertical pole. Traffic signal heads and background screens with a total mass of 50 kg and projected windage area of 1.3 m<sup>2</sup> will be fixed to the bracket. The pole shall be supplied in two sections, each not exceeding 6 m in length, to facilitate transport, storage and installation.

The fixed bracket at the end of the cantilever shall be designed to accommodate any of the following signal configurations complete with background screens:

- 1 × 3 aspect S1, S2, S3 or S4
- 1 × 4 aspect, S5, S6 or S7
- 1 × 5 aspect, S8 or S9
- 2 × 3 aspect side by side, S4/S1R

It shall also be possible to mount the signals back to back on the cantilever.

The minimum clearance of the overhang arm shall not be less than 5.1 m measured at a point 1 m from the centre of the vertical pole. The clearance between the highest point on the road and the lowest point on the overhead signal (normally the bottom of the background screen) must exceed 5.1 m.

The cantilever shall be pivoted at the pole to facilitate installation and maintenance.

The pole shall be supplied complete with a foundation frame, mounting bolts and levelling washers (conventional hook bolts are not acceptable). Fixing bolts for the pole and overhead suspension bracket as well as a cable duct must also be supplied.

### **11.5.2 MATERIAL**

The pole shall be manufactured from first grade steel tubing adequately rated for the maximum loading due to the fixed mass and windage. No butt or longitudinal welds will be permitted.

### **11.5.3 FINISH**

All parts, excluding the foundation frame, shall be thoroughly cleaned, primed and spray painted with golden yellow enamel paint. Fillet welds shall be neat and thoroughly cleaned before priming and painting.

## **11.5.4 CANTILEVER POLE FOUNDATION FRAME**

### **11.5.4.1 CONSTRUCTION**

The foundation frame shall consist of four “feet”, bent and welded together to form a cage. The top of the cage shall be punched

with four, 25 mm bolt holes. The PCD of the four bolt holes shall be the same as that of the mounting holes on the flange of the 5,1 m cantilever traffic light pole utilised by Mogale City Municipality. The height of the foundation frame shall be no less than 920 mm.

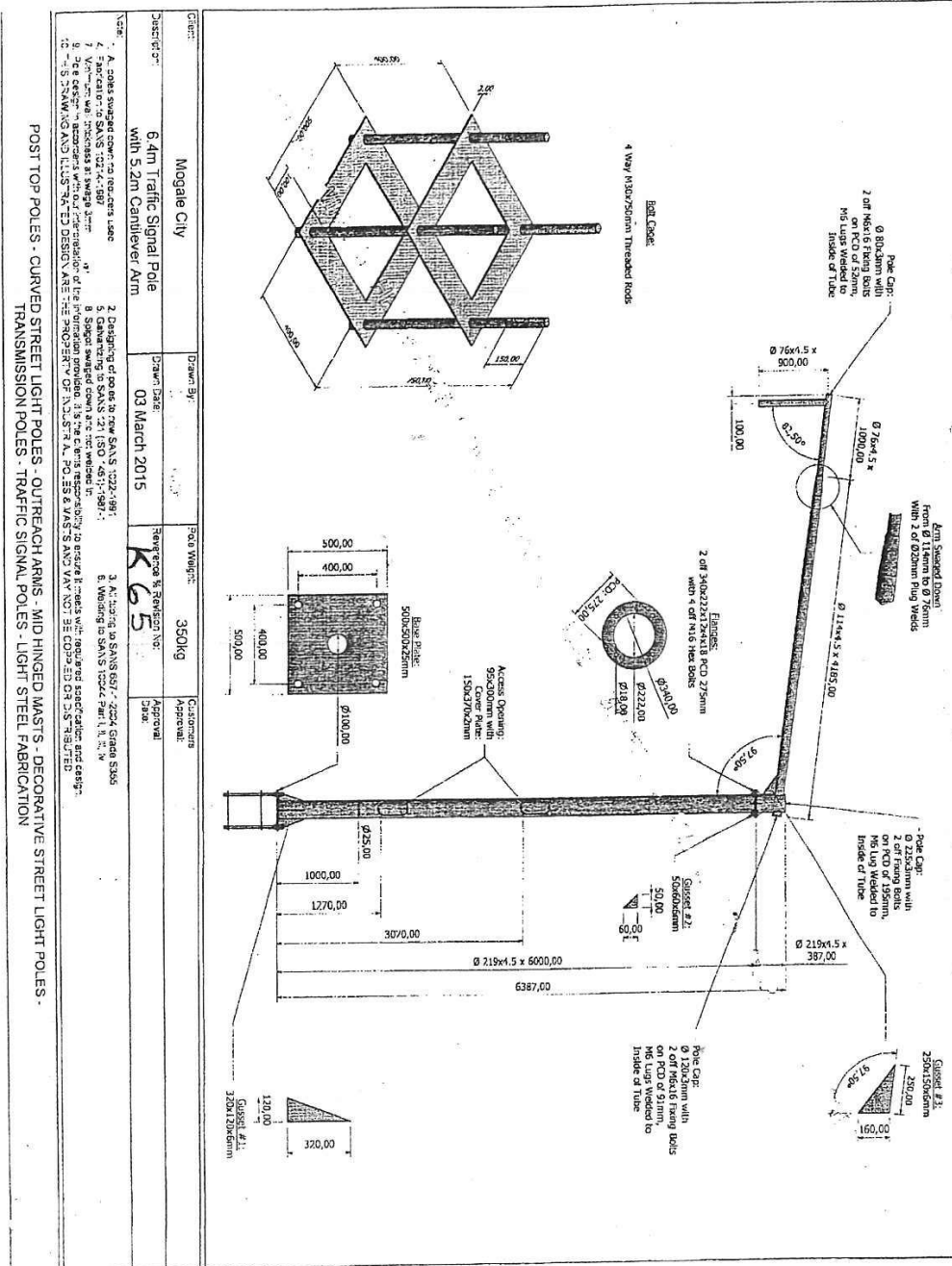
**11.5.4.2 MATERIAL**

The foundation frame shall be manufactured from first-grade mild steel. 80 mm × 10 mm flat bar shall be utilised.

**11.5.4.3 FINISH**

The foundation frame shall be hot-dip galvanised. All welds shall be neat and thoroughly cleaned before galvanising.

## ROBOT POLE K 65



## 11.6 STREETLIGHT POLES

### **GENERAL DESCRIPTION**

Poles shall be designed according to the following specifications and all pole tops shall be designed to carry Spigots as listed in clause 8.2.3

#### **11.6.1 MCLM/PL-7**

- Total length: 7,2m
- Mounting Height: 6m
- Ground mounted: 1,2m
- Minimum outside diameter: 165mm
- Maximum mass per luminaire: 15kg
- Maximum Projected area of luminaire: 0,2m<sup>2</sup>
- Maximum number of luminaires per pole: 4
- The poles shall have an access slot of a depth of 500mm below normal ground level. The dimensions of the access slots shall be 140 mm (W) × 100 mm (H). The corners of the access slots shall be rounded to avoid unnecessary stress.
- The openings shall be flame-cut, and the bottom cable entry shall be bent in at an angle of 30° from the vertical. The slots shall be well radiused and free of burrs.
- A fuse mounting bracket with a minimum thickness of 2 mm shall be mounted in the pole opposite the access opening. The mounting bracket shall incorporate a suitable length of DIN rail as well as an M10 × 40 mm earth stud. The earth stud shall be bonded to the pole so that connecting an earth conductor from an external source to it will have the effect of earthing the entire pole.
- The pole shall have a 60 × 6 mm anti-sink flat bar shaped to the inside base diameter, welded symmetrically across the base opening, with the flat surface at 90° to the pole axis.
- The pole shall have fins welded to the pole below ground level (at 90° to the cable entries) to avoid the pole rotating about its own axis as a result of the wind loading exceeding the bearing pressure of the soil. As a rough guide, the size of the fins should not be less than 300 × 125 × 6 mm.

#### **11.6.2 MCLM/PL-9**

- Total length: 9,2m
- Mounting Height: 8m
- Ground mounted: 1,2m
- Minimum outside diameter: 165mm
- Maximum mass per luminaire: 15kg
- Maximum Projected area of luminaire: 0,2m<sup>2</sup>
- Maximum number of luminaires per pole: 4
- The poles shall have an access slot of a depth of 500mm below normal ground level. The dimensions of the access slots shall be 140 mm (W) × 100 mm (H). The corners of the access slots shall be rounded to avoid unnecessary stress.
- The openings shall be flame-cut, and the bottom cable entry shall be bent in at an angle of 30° from the vertical. The slots shall be well radiused and free of burrs.



- A fuse mounting bracket with a minimum thickness of 2 mm shall be mounted in the pole opposite the access opening. The mounting bracket shall incorporate a suitable length of DIN rail as well as an M10 × 40 mm earth stud. The earth stud shall be bonded to the pole so that connecting an earth conductor from an external source to it will have the effect of earthing the entire pole.
- The poles shall have a 60 × 6 mm anti-sink flat bar shaped to the inside base diameter, welded symmetrically across the base opening, with the flat surface at 90° to the pole axis.
- The pole shall have fins welded to the pole below ground level (at 90° to the cable entries) to avoid the pole rotating about its own axis as a result of the wind loading exceeding the bearing pressure of the soil. As a rough guide, the size of the fins should not be less than 300 × 125 × 6 mm.

#### **11.6.3 MCLM/PL -11**

- Total length: 11,5m
- Mounting Height: 10m
- Ground mounted: 1,5m
- Minimum outside diameter: 165mm
- Maximum mass per luminaire: 25kg
- Maximum Projected area of luminaire: 0,36m<sup>2</sup>
- Maximum number of luminaires per pole: 2
- The poles shall have an access slot of a depth of 500mm below normal ground level. The dimensions of the access slots shall be 140 mm (W) × 100 mm (H). The corners of the access slots shall be rounded to avoid unnecessary stress.
- The openings shall be flame-cut, and the bottom cable entry shall be bent in at an angle of 30° from the vertical. The slots shall be well radiused and free of burrs.
- A fuse mounting bracket with a minimum thickness of 2 mm shall be mounted in the pole opposite the access opening. The mounting bracket shall incorporate a suitable length of DIN rail as well as an M10 × 40 mm earth stud. The earth stud shall be bonded to the pole so that connecting an earth conductor from an external source to it will have the effect of earthing the entire pole.
- All the poles shall have a 60 × 6 mm anti-sink flat bar shaped to the inside base diameter, welded symmetrically across the base opening, with the flat surface at 90° to the pole axis.
- The pole shall have fins welded to the pole below ground level (at 90° to the cable entries) to avoid the pole rotating about its own axis as a result of the wind loading exceeding the bearing pressure of the soil. As a rough guide, the size of the fins should not be less than 450 × 125 × 6 mm.

#### **11.6.4 MCLM/PL -14**

- Total length: 13,8m
- Mounting Height: 12m
- Ground mounted: 1,8m
- Minimum outside diameter: 165mm
- Maximum mass per luminaire: 25kg
- Maximum Projected area of luminaire: 0,36m<sup>2</sup>
- Maximum number of luminaires per pole: 2
- The poles shall have an access slot of a depth of 500mm below normal ground level. The dimensions of the access slots shall be 140 mm (W)

× 100 mm (H). The corners of the access slots shall be rounded to avoid unnecessary stress.

- The openings shall be flame-cut, and the bottom cable entry shall be bent in at an angle of 30° from the vertical. The slots shall be well radiused and free of burrs.
- A fuse mounting bracket with a minimum thickness of 2 mm shall be mounted in the pole opposite the access opening. The mounting bracket shall incorporate a suitable length of DIN rail as well as an M10 × 40 mm earth stud. The earth stud shall be bonded to the pole so that connecting an earth conductor from an external source to it will have the effect of earthing the entire pole.
- All earth mount poles shall have a 60 × 6 mm anti-sink flat bar shaped to the inside base diameter, welded symmetrically across the base opening, with the flat surface at 90° to the pole axis.
- The pole shall have fins welded to the pole below ground level (at 90° to the cable entries) to avoid the pole rotating about its own axis as a result of the wind loading exceeding the bearing pressure of the soil. As a rough guide, the size of the fins should not be less than 450 × 125 × 6 mm.

#### **11.6.5 MCLM/PL-CB**

- Total length: 7,2m
- Mounting Height: 6m
- Ground Mounted 1,2m
- Minimum outside diameter: 165mm
- The pole shall be 165mm O.D over its entire height (i.e. there shall be reduction in diameter).
- The pole shall not have an access opening or access opening cover
- The poles shall have an access slot of a depth of 500mm below normal ground level, another slot at a distance 1000mm from the top of the pole. The dimensions of both slots 140mm (W) × 100mm (H). The corners of the rounded to avoid unnecessary stress.
- The top of the shall be sealed against the ingress of water by means of a welded cap.
- A Mogale City Streetlight control box shall be capable of being mounted onto the top of the pole by means of a stainless-steel strapping and the pole shall be designed to withstand resultant loading. The Streetlight control box shall have a maximum mass of 50kg and dimensions of not more than 1000 X 800 mm.
- The pole shall have fins welded to the pole below ground level (at 90° to the cable entries) to avoid the pole rotating about its own axis as a result of the wind loading exceeding the bearing pressure of the soil. As a rough guide, the size of the fins should not be less than 450 × 125 × 6 mm.
- The pole shall have a 60 × 6 mm anti-sink flat bar shaped to the inside base diameter, welded symmetrically across the base opening, with the flat surface at 90° to the pole axis.

#### **11.6.6 MCLM/LV-DP**

- Total Length: 9,37m
- Mounting Height: 7,87m
- Ground Mounted: 1,5m
- Minimum outside diameter: 165mm
- Maximum mass per luminaire: 15kg
- Maximum projected area of luminaire: 0,2m²

- The pole shall have no access opening or access opening cover
- The top of the pole shall be sealed against the ingress of by means of a cap that is held in place by means of grub screws.
- The pole shall have an M10 nut welded to the pole at a height of 1,5 m from the top of the pole. This is to provide a point for earthing the pole when it is carrying overhead conductors or ABC. The corresponding full-thread M10 bolt shall be supplied fitted into the nut. The arrangement shall be such that the full length of the bolt is able to enter the nut.
- The pole shall have fins welded to the pole below ground level (at 90° to the cable entries) to avoid the pole rotating about its own axis as a result of the wind loading exceeding the bearing pressure of the soil. As a rough guide, the size of the fins should not be less than 450 × 125 × 6 mm.
- The pole shall have a 60 × 6 mm anti-sink flat bar shaped to the inside base diameter, welded symmetrically across the base opening, with the flat surface at 90° to the pole axis

## Technical Schedules A and B

For

### MCLM/PL-7

**Schedule A: Purchaser's specific requirements**

**Schedule B: Guarantees and technical particulars of equipment offered.**

Item	Sub clause of this specification	Description	Schedule A	Schedule B
1		Name of manufacturer	Xxxxxxxx	
2		Place of manufacture	Xxxxxxxx	
3		Manufacturer's identity reference	MCLM/PL-7	
4	8.2.1	Standard to which pole complies	SANS 10225	
5	8.2.1	Does the design comply with all the requirements of SANS 10225 and this Specification? Yes/No	Yes	
6	8.2.1	Is the pole design approved and certified by a qualified professional structural engineer? Yes/No	Yes	
7	8.2.2	Standard to which steel tubes comply	SANS 657-1	
8	8.2.2	Material of pole	Grade350MH steel	
9	8.2,2	Is the pole design accompanied by comprehensive strength calculations?	Yes	
10	8.1	Standard to which welding complies	SANS 044	
11	8.2.6	Standard to which galvanizing complies	SABS ISO1461	
12	8.2.2	Calculated natural frequency pole Hz	Xxxxxxxxxxx	
13	8.2.2	Expected service life of pole Years	30(min)	

Tender Number:

---

Tenderer's Authorised Signatory:

---

Signature

Name in block letters

Full name of company:

---

## Technical Schedules A and B

For

### MCLM/PL-9

**Schedule A: Purchaser's specific requirements**

**Schedule B: Guarantees and technical particulars of equipment offered.**

Item	Sub clause of this specification	Description	Schedule A	Schedule B
1		Name of manufacturer	Xxxxxxxx	
2		Place of manufacture	Xxxxxxxx	
3		Manufacturer's identity reference	MCLM/PL-9	
4	8.2.1	Standard to which pole complies	SANS 10225	
5	8.2.1	Does the design comply with all the requirements of SANS 10225 and this Specification? Yes/No	Yes	
6	8.2.1	Is the pole design approved and certified by a qualified professional structural engineer? Yes/No	Yes	
7	8.2.2	Standard to which steel tubes comply	SANS 657-1	
8	8.2.2	Material of pole	Grade S350MH steel	
9	8.2.2	Is the pole design accompanied by comprehensive strength calculations?	Yes	
10	8.1	Standard to which welding complies	SANS 044	
11	8.2.6	Standard to which galvanizing complies	SABS ISO1461	
12	8.2.2	Calculated natural frequency pole Hz	Xxxxxxxxxxx	
13	8.2.2	Expected service life of pole Years	30(min)	

Tender Number:

---

Tenderer's Authorised Signatory:

---

Signature

Name in block letters

Full name of company:

---

## Technical Schedules A and B

For

### MCLM/PL-9

**Schedule A: Purchaser's specific requirements**

**Schedule B: Guarantees and technical particulars of equipment offered.**

Item	Sub clause of this specification	Description	Schedule A	Schedule B
1		Name of manufacturer	Xxxxxxxx	
2		Place of manufacture	Xxxxxxxx	
3		Manufacturer's identity reference	MCLM/PL-9	
4	8.2.1	Standard to which pole complies	SANS 10225	
5	8.2.1	Does the design comply with all the requirements of SANS 10225 and this Specification? Yes/No	Yes	
6	8.2.1	Is the pole design approved and certified by a qualified professional structural engineer? Yes/No	Yes	
7	8.2.2	Standard to which steel tubes comply	SANS 657-1	
8	8.2.2	Material of pole	Grade350MH steel	
9	8.2,2	Is the pole design accompanied by comprehensive strength calculations?	Yes	
10	8.1	Standard to which welding complies	SANS 044	
11	8.2.6	Standard to which galvanizing complies	SABS ISO1461	
12	8.2.2	Calculated natural frequency pole Hz	Xxxxxxxxxxx	
13	8.2.2	Expected service life of pole Years	30(min)	



Tender Number:

---

Tenderer's Authorised Signatory:

---

Signature

Name in block letters

Full name of company:

---

## Technical Schedules A and B

For

### MCLM/PL-11

**Schedule A: Purchaser's specific requirements**

**Schedule B: Guarantees and technical particulars of equipment offered.**

Item	Sub clause of this specification	Description	Schedule A	Schedule B
1		Name of manufacturer	Xxxxxxxx	
2		Place of manufacture	Xxxxxxxx	
3		Manufacturer's identity reference	MCLM/PL-11	
4	8.2.1	Standard to which pole complies	SANS 10225	
5	8.2.1	Does the design comply with all the requirements of SANS 10225 and this Specification? Yes/No	Yes	
6	8.2.1	Is the pole design approved and certified by a qualified professional structural engineer? Yes/No	Yes	
7	8.2.2	Standard to which steel tubes comply	SANS 657-1	
8	8.2.2	Material of pole	Grade350MH steel	
9	8.2,2	Is the pole design accompanied by comprehensive strength calculations?	Yes	
10	8.1	Standard to which welding complies	SANS 044	
11	8.2.6	Standard to which galvanizing complies	SABS ISO1461	
12	8.2.2	Calculated natural frequency pole Hz	Xxxxxxxxxxx	
13	8.2.2	Expected service life of pole Years	30(min)	

Tender Number:

---

Tenderer's Authorised Signatory:

---

Signature

Name in block letters

Full name of company:

---

## Technical Schedules A and B

For

### MCLM/PL-14

**Schedule A: Purchaser's specific requirements**

**Schedule B: Guarantees and technical particulars of equipment offered.**

Item	Sub clause of this specification	Description	Schedule A	Schedule B
1		Name of manufacturer	Xxxxxxxx	
2		Place of manufacture	Xxxxxxxx	
3		Manufacturer's identity reference	MCLM/PL-14	
4	8.2.1	Standard to which pole complies	SANS 10225	
5	8.2.1	Does the design comply with all the requirements of SANS 10225 and this Specification? Yes/No	Yes	
6	8.2.1	Is the pole design approved and certified by a qualified professional structural engineer? Yes/No	Yes	
7	8.2.2	Standard to which steel tubes comply	SANS 657-1	
8	8.2.2	Material of pole	Grade350MH steel	
9	8.2,2	Is the pole design accompanied by comprehensive strength calculations?	Yes	
10	8.1	Standard to which welding complies	SANS 044	
11	8.2.6	Standard to which galvanizing complies	SABS ISO1461	
12	8.2.2	Calculated natural frequency pole Hz	Xxxxxxxxxxx	
13	8.2.2	Expected service life of pole Years	30(min)	

Tender Number:

---

Tenderer's Authorised Signatory:

---

Signature

Name in block letters

Full name of company:

---

## Technical Schedules A and B

For

### MCLM/PL-CB

**Schedule A: Purchaser's specific requirements**

**Schedule B: Guarantees and technical particulars of equipment offered.**

Item	Sub clause of this specification	Description	Schedule A	Schedule B
1		Name of manufacturer	Xxxxxxxx	
2		Place of manufacture	Xxxxxxxx	
3		Manufacturer's identity reference	MCLM/PL-CB	
4	8.2.1	Standard to which pole complies	SANS 10225	
5	8.2.1	Does the design comply with all the requirements of SANS 10225 and this Specification? Yes/No	Yes	
6	8.2.1	Is the pole design approved and certified by a qualified professional structural engineer? Yes/No	Yes	
7	8.2.2	Standard to which steel tubes comply	SANS 657-1	
8	8.2.2	Material of pole	Grade350MH steel	
9	8.2,2	Is the pole design accompanied by comprehensive strength calculations?	Yes	
10	8.1	Standard to which welding complies	SANS 044	
11	8.2.6	Standard to which galvanizing complies	SABS ISO1461	
12	8.2.2	Calculated natural frequency pole Hz	Xxxxxxxxxxx	
13	8.2.2	Expected service life of pole Years	30(min)	

Tender Number:

---

Tenderer's Authorised Signatory:

---

Signature

Name in block letters

Full name of company:

---

## Technical Schedules A and B

For

### MCLM/LV-DP

**Schedule A: Purchaser's specific requirements**

**Schedule B: Guarantees and technical particulars of equipment offered.**

Item	Sub clause of this specification	Description	Schedule A	Schedule B
1		Name of manufacturer	Xxxxxxxx	
2		Place of manufacture	Xxxxxxxx	
3		Manufacturer's identity reference	MCLM/LV-DP	
4	8.2.1	Standard to which pole complies	SANS 10225	
5	8.2.1	Does the design comply with all the requirements of SANS 10225 and this Specification? Yes/No	Yes	
6	8.2.1	Is the pole design approved and certified by a qualified professional structural engineer? Yes/No	Yes	
7	8.2.2	Standard to which steel tubes comply	SANS 657-1	
8	8.2.2	Material of pole	Grade350MH steel	
9	8.2,2	Is the pole design accompanied by comprehensive strength calculations?	Yes	
10	8.1	Standard to which welding complies	SANS 044	
11	8.2.6	Standard to which galvanizing complies	SABS ISO1461	
12	8.2.2	Calculated natural frequency pole Hz	Xxxxxxxxxxx	
13	8.2.2	Expected service life of pole Years	30(min)	



Tender Number:

---

Tenderer's Authorised Signatory:

---

Signature

Name in block letters

Full name of company:

---

## Technical Schedules A and B

For

### ROBOT POLE K61

**Schedule A: Purchaser's specific requirements**

**Schedule B: Guarantees and technical particulars of equipment offered.**

Item	Sub clause of this specification	Description	Schedule A	Schedule B
1		Name of manufacturer	Xxxxxxxx	
2		Place of manufacture	Xxxxxxxx	
3		Manufacturer's identity reference	K61	
4	8.2.1	Standard to which pole complies	SANS 10225	
5	8.2.1	Does the design comply with all the requirements of SANS 10225 and this Specification? Yes/No	Yes	
6	8.2.1	Is the pole design approved and certified by a qualified professional structural engineer? Yes/No	Yes	
7	8.2.2	Standard to which steel tubes comply	SANS 657-1	
8	8.2.2	Material of pole	Grade350MH steel	
9	8.2,2	Is the pole design accompanied by comprehensive strength calculations?	Yes	
10	8.1	Standard to which welding complies	SANS 044	
11	8.2.6	Standard to which galvanizing complies	SABS ISO1461	
12	8.2.2	Calculated natural frequency pole Hz	Xxxxxxxxxxx	
13	8.2.2	Expected service life of pole Years	30(min)	

Tender Number:

---

Tenderer's Authorised Signatory:

---

Signature

Name in block letters

Full name of company:

---

## Technical Schedules A and B

For

### ROBOT POLE K62

**Schedule A: Purchaser's specific requirements**

**Schedule B: Guarantees and technical particulars of equipment offered.**

Item	Sub clause of this specification	Description	Schedule A	Schedule B
1		Name of manufacturer	Xxxxxxxx	
2		Place of manufacture	Xxxxxxxx	
3		Manufacturer's identity reference	K62	
4	8.2.1	Standard to which pole complies	SANS 10225	
5	8.2.1	Does the design comply with all the requirements of SANS 10225 and this Specification? Yes/No	Yes	
6	8.2.1	Is the pole design approved and certified by a qualified professional structural engineer? Yes/No	Yes	
7	8.2.2	Standard to which steel tubes comply	SANS 657-1	
8	8.2.2	Material of pole	Grade350MH steel	
9	8.2,2	Is the pole design accompanied by comprehensive strength calculations?	Yes	
10	8.1	Standard to which welding complies	SANS 044	
11	8.2.6	Standard to which galvanizing complies	SABS ISO1461	
12	8.2.2	Calculated natural frequency pole Hz	Xxxxxxxxxxxx	
13	8.2.2	Expected service life of pole Years	30(min)	

Tender Number:

---

Tenderer's Authorised Signatory:

---

Signature

Name in block letters

Full name of company:

---

## Technical Schedules A and B

For

### ROBOT POLE K63

**Schedule A: Purchaser's specific requirements**

**Schedule B: Guarantees and technical particulars of equipment offered.**

Item	Sub clause of this specification	Description	Schedule A	Schedule B
1		Name of manufacturer	Xxxxxxxx	
2		Place of manufacture	Xxxxxxxx	
3		Manufacturer's identity reference	K63	
4	8.2.1	Standard to which pole complies	SANS 10225	
5	8.2.1	Does the design comply with all the requirements of SANS 10225 and this Specification? Yes/No	Yes	
6	8.2.1	Is the pole design approved and certified by a qualified professional structural engineer? Yes/No	Yes	
7	8.2.2	Standard to which steel tubes comply	SANS 657-1	
8	8.2.2	Material of pole	Grade350MH steel	
9	8.2,2	Is the pole design accompanied by comprehensive strength calculations?	Yes	
10	8.1	Standard to which welding complies	SANS 044	
11	8.2.6	Standard to which galvanizing complies	SABS ISO1461	
12	8.2.2	Calculated natural frequency pole Hz	Xxxxxxxxxxx	
13	8.2.2	Expected service life of pole Years	30(min)	

Tender Number:

---

Tenderer's Authorised Signatory:

---

Signature

Name in block letters

Full name of company:

---

## Technical Schedules A and B

For

### ROBOT POLE K64

**Schedule A: Purchaser's specific requirements**

**Schedule B: Guarantees and technical particulars of equipment offered.**

Item	Sub clause of this specification	Description	Schedule A	Schedule B
1		Name of manufacturer	Xxxxxxxx	
2		Place of manufacture	Xxxxxxxx	
3		Manufacturer's identity reference	K64	
4	8.2.1	Standard to which pole complies	SANS 10225	
5	8.2.1	Does the design comply with all the requirements of SANS 10225 and this Specification? Yes/No	Yes	
6	8.2.1	Is the pole design approved and certified by a qualified professional structural engineer? Yes/No	Yes	
7	8.2.2	Standard to which steel tubes comply	SANS 657-1	
8	8.2.2	Material of pole	Grade350MH steel	
9	8.2,2	Is the pole design accompanied by comprehensive strength calculations?	Yes	
10	8.1	Standard to which welding complies	SANS 044	
11	8.2.6	Standard to which galvanizing complies	SABS ISO1461	
12	8.2.2	Calculated natural frequency pole Hz	Xxxxxxxxxxx	
13	8.2.2	Expected service life of pole Years	30(min)	



Tender Number:

---

Tenderer's Authorised Signatory:

---

Signature

Name in block letters

Full name of company:

---

## Technical Schedules A and B

For

### ROBOT POLE K65

**Schedule A: Purchaser's specific requirements**

**Schedule B: Guarantees and technical particulars of equipment offered.**

Item	Sub clause of this specification	Description	Schedule A	Schedule B
1		Name of manufacturer	Xxxxxxxx	
2		Place of manufacture	Xxxxxxxx	
3		Manufacturer's identity reference	K65	
4	8.2.1	Standard to which pole complies	SANS 10225	
5	8.2.1	Does the design comply with all the requirements of SANS 10225 and this Specification? Yes/No	Yes	
6	8.2.1	Is the pole design approved and certified by a qualified professional structural engineer? Yes/No	Yes	
7	8.2.2	Standard to which steel tubes comply	SANS 657-1	
8	8.2.2	Material of pole	Grade350MH steel	
9	8.2,2	Is the pole design accompanied by comprehensive strength calculations?	Yes	
10	8.1	Standard to which welding complies	SANS 044	
11	8.2.6	Standard to which galvanizing complies	SABS ISO1461	
12	8.2.2	Calculated natural frequency pole Hz	Xxxxxxxxxxx	
13	8.2.2	Expected service life of pole Years	30(min)	

Tender Number:

---

Tenderer's Authorised Signatory:

---

Signature

Name in block letters

Full name of company:

---









## 12. PRICING SCHEDULE FOR VARIOUS STEEL POLES

**PRICES MUST BE VAT INCLUSIVE (WHERE APPLICABLE) (FOR EVALUATION PURPOSES)**

**Bidders must price all items (incomplete pricing will lead to disqualification)**

ITEM NO.	DESCRIPTION	Unit	Unit Price
1.	Standard traffic light poles including foundation frame (k 61 <b>as per attached drawing &amp; specification</b> )	Each	
2.	Standard traffic light poles (k61) (pole only)	Each	
3.	Foundation frame only (k61)	Each	
4.	Totem traffic light poles including foundation frame (k 62 <b>as per attached drawing &amp; specification</b> )	Each	
5.	Totem traffic light poles (k62) (pole only)	Each	
6.	Foundation frame only (k62)	Each	
7.	Thick standard pole without foundation frame (k 63 <b>as per attached drawing &amp; specification</b> )	Each	
8.	Totem 2 traffic light poles (k 64 including foundation frame <b>as per attached drawing &amp; specification</b> )	Each	
9.	Totem 2 traffic light poles (k 64) (pole only)	Each	
10.	Foundation frame only (k64)	Each	
11.	Cantilever traffic light poles (k 65 including foundation frame <b>as per attached drawing &amp; specification</b> )	Each	
12.	Cantilever traffic light poles (k65)	Each	
13.	Foundation frame only (k65)	Each	
14.	MCLM/PL-7 (pole only)	Each	
15.	MCLM/PL-9 (pole only)	Each	
16.	MCLM/PL-11 (pole only)	Each	
17.	MCLM/PL-14 (pole only)	Each	
18.	MCLM/PL-CB (pole only)	Each	
19.	MCLM/LV-DP (pole only)	Each	



20.	K12 Streetlight arm as <b>per attached drawing</b>	Each	
21.	K13/1 Spigot 2-way Streetlight bracket as <b>per attached drawing</b>	Each	
22.	K47 Streetlight bracket as <b>per attached drawing</b>	Each	
23.	K13 Streetlight bracket as <b>per attached drawing</b>	Each	
24.	Access opening special Key (Unique to MCLM)	Each	
<b>Total (For evaluation purposes only)</b>			<b>R</b>

**Annual rates increase on all items will be allowed to increase by a Producer Price Index PPI) as published by the Statistics South Africa (StatsSA) for year two (2) and year three (3).**

.....  
.....

Signature\_\_\_\_\_ Date\_\_\_\_\_

### 13. **FUNCTIONALITY** **TECHNICAL EVALUATION CRITERIA**

- The below mentioned criteria regarding Functionality is required for responsiveness and therefore eligibility for the next stage of evaluation. This is done to determine the ability of each bidder to successfully execute the contract according to specifications.
- Failure to score a minimum of **30 points** out of **60 points** will lead to non-compliance and bidders will be rejected after this phase and not continue for price scoring. **If any criterion is rated zero points, the bidder will be rejected, even if the required 30 points out of 60 points are achieved.**
- These criteria shall only determine whether a tender will further be evaluated and will not influence the points scored on Price.
- Tenderers must score **a minimum score of 30 or more points** on evaluation criteria for them to be considered for the next stage of evaluation.

<b>Technical Evaluation Criteria</b>			
Infrastructure and Resources Available Plant & Tools			
<b><i>Vehicles: Proof of ownership with the valid registration documents (ENATIS) and a valid load test certificate for the crane truck.</i></b> <b><i>OR if hiring, letter of intent from the hiring company stating permission to use vehicle/equipment for this project on the hiring company letterhead with a copy of a valid load test certificate for the crane truck.</i></b> <b><i>*The load test certificate must not have expired at closure of the bid.</i></b>			
Item	Equipment	Weight	Minimum Points
1,	Minimum of one Crane truck x1 owned or hiring = <b>10 Points</b>  <b>Note:</b> Crane truck to have a minimum boom height of at least 20m and a lifting capacity of at least 3 tons at 20m boom height. (provide valid test certificates).  Two (2) or more crane trucks x2 owned or hiring = <b>20 Points</b>	<b>20</b>	<b>10</b>
<b>Section 1 Total</b>		<b>20</b>	<b>10</b>
2. Company experience			
<b><i>Tenderer must attach contactable, dated and signed reference letters on the on previous client's letter head indicating, the duration and value of the contract. The reference should state the successful delivery of previous similar steel pole orders.</i></b> <b><i>Similar project experience must have been completed within the past five years. Failure to attach compliant reference letters will result in the rejection of the bid.</i></b>			
Item	Experience	Weight	Minimum Points

2.1	<p>Previous records for the past five years for supply, delivery and off-loading of steel poles.</p> <p>8 and more reference letters = 20 4 to 7 reference letters =15 1 to 3 reference letters = 10</p>	20	10
2.2	<p>Combined value of projects from the submitted reference letters for supply, delivery and off-loading of steel poles.</p> <p>R600 001 or more = 20 R300 001 to R600 000 =15 R100 000 to R300 000 = 10</p>	20	10
<b>Section 2 Total</b>		<b>40</b>	<b>20</b>
<b>Technical Evaluation Criteria Total</b>		<b>60</b>	<b>30</b>

- The purpose of the comparison is to ensure a meaningful evaluation; bidders are requested to furnish detailed information of substantiation of compliance to the evaluation criteria. The service provider should at least score a minimum of **30 points** out of the **60 points** in order to be considered to the next evaluation phase. **Failure to score the minimum points will lead to disqualification.**
- Bidder(s) will be required to achieve a minimum of **30 points out of 60 points** for functionality and **not score 0 points** on any of the individual criterion in order to be evaluated further on price and specific goals.
- All information and particulars necessary to properly evaluate this tender must be furnished on submission. Incomplete particulars and documents required to substantiate the service provider's claims or insufficient documentary proof thereof will be construed to mean that the service provider is forfeiting the evaluation points in that regard.

**14. THE CRITERIA TO MONITOR AND EVALUATE PERFORMANCE OF THE SERVICE PROVIDER/S AS PER SECTION 27 OF SUPPLY CHAIN MANAGEMENT POLICY.**

<b>Key Performance Areas</b>	<b>Key Performance Indicators</b>	<b>Portfolio of Evidence</b>
<b>1. Leadtime</b>	Delivery must be made within 6 weeks after receipt of the Purchase Order	Signed Delivery note by both parties and a Purchase Order
<b>2. Quality</b>	The quality of the poles must be in line with the requirements of SABS	Guarantee Certificate and SABS certificate 0198
<b>3. Quantity</b>	Ensure that the delivered Poles are as per the Purchase Order	Signed Delivery  Pictures of the delivered Poles

**14.1 SCORING GUIDELINES**

<b>Rating scale</b>	<b>Description</b>
1 = Poor (<59%)	Unacceptable Performance, the performance does not meet the standard expected, the contractor has failed to demonstrate the commitment level expected.
2 = Average (60-69%)	Performance not fully effective, performance is below the standard required, it meets some expectations.
3 = Above Average (70-79%)	Performance fully effective, performance fully meets standards expected as per the scope
4 = Good (80%-89%)	Performance significantly above expectations, performance is significantly higher than the standard expected.
5 = Excellent (90%-100)	Outstanding performance, performance far exceeds the standard expected.

**14.2 PENALTIES**

Penalties for poor performance will be evoked in line with Clause 10 of the Supplier Performance Monitoring and Evaluation Policy.

## BID CHECKLIST

This list is aimed at assisting all bidders to submit complete tender documents.

Bidders are to check the following points before the submission of their quotation document and to complete YES/NO next to each item as an indication that the bidder has complied with the provision of the item concerned.

ITEM	DESCRIPTION	YES	NO
1.	Bidder must attach the Central Supplier Database (CSD) registration report.		
2.	Copies of ID's for company/entity directors		
3.	The bidding entity and its director(s) must submit Municipal Rates and Taxes account which is not older than three (3) months / ninety (90) days in arrears at the time of the closing date.		
4.	If the bidding entity and its director(s) does not have a Municipal Rates and Taxes account, it must submit a Municipal Service Charges Statement (water statement or electricity statement or refuse removal statement or sewerage statement).		
5.	If the bidding entity and its director(s) does not own a property it must submit a valid lease agreement which has the address of the business or Rental Statement which is in the name of the business.		
6.	<p>If the Bidding Entity and its director(s) operates from Informal settlement and does not have a Municipal Rates Account,</p> <ul style="list-style-type: none"> <li>the bidder must submit Confirmation on Municipality / Metro letterhead signed and stamped by the ward Councillor / delegate with contact details and not older than three (3) months.</li> <li>An original letter from a tribal authority not older than three (3) months indicating that the business is operating on tribal land.</li> </ul>		
7.	<p>If the bidding entity and its director(s) operates from parents' place or any other place and is not responsible for Municipal account / Services.</p> <ul style="list-style-type: none"> <li>The bidding entity must submit an original Sworn Affidavit by the property owner.</li> </ul>		
8.	If the bidding entity and its director(s) is in the process of acquiring new property, which property has not yet been transferred to its name, a letter from the conveyancing attorney(s) must be submitted.		
9.	If the bidding entity and its director(s) submit a Municipal Account which is in the name of the Trust Account, and original Sworn Affidavit from the Trustees must be furnished explaining that factor.		

10.	If the bidding entity's director(s) submit a Municipal Account in the name of the other spouse, an original Sworn Affidavit explaining the fact must be submitted.		
11.	All pages of the bid document have been read by the bidder and the returnable schedules and MBD 's forms duly completed and signed. e.g. MBD1, MBD 4 , MBD 5, MBD 6.1, MBD 6.2, MBD 8 AND MBD 9.		
12.	All pages requiring information have been completed in full and in black ink.		
13.	Bids must be submitted in original document.		
14.	No pages removed from the quotation document		
15.	A copy of the resolution of your Board of Directors, similar to the attached specimen, authorizing the signatory to sign the quotation and the subsequent contracts, has been attached and signed.		
16.	Joint Venture (JV) agreement has been attached and signed (if applicable)		
17.	Pricing Schedule must be completed and signed		
18.	In case of any amendments made, must be initialled in each alteration by the authorized signatory?  Please note that the use of tipp-ex will lead to immediate disqualification.		
19.	Please declare any interest as required in terms of MBD - 4 truthfully and correctly as incorrect declarations are considered a criminal offence. <ul style="list-style-type: none"> <li>▪ Personal Tax Numbers included</li> <li>▪ State Employee Number / Persal Number</li> <li>▪ Identity number</li> <li>▪ Name</li> </ul>		
20.	Please take note of the functionality evaluation criteria that will be applied to your submission in order to ensure that your company has the necessary capacity and capability to successfully execute this tender, if appointed.  Ensure that sufficient information is included in your submission to ensure successful evaluation of your bid.		

**PLEASE NOTE:**

- **No contract will be awarded to a service provider/s, if the service provider/s or its directors are in arrears with their municipal accounts for more than three (3) months.**
- **In case of a Joint Venture, please note that individual documents have to be submitted for all parties in the JV, such as CSD, municipal accounts, etc.**
- **No communication with Mogale City Municipal officials is allowed after the closing date of the tender.**
- **The only authorized form of communication will be through the Supply Chain Management Office email address at [SCMEnquiries@mogalecity.gov.za](mailto:SCMEnquiries@mogalecity.gov.za)**