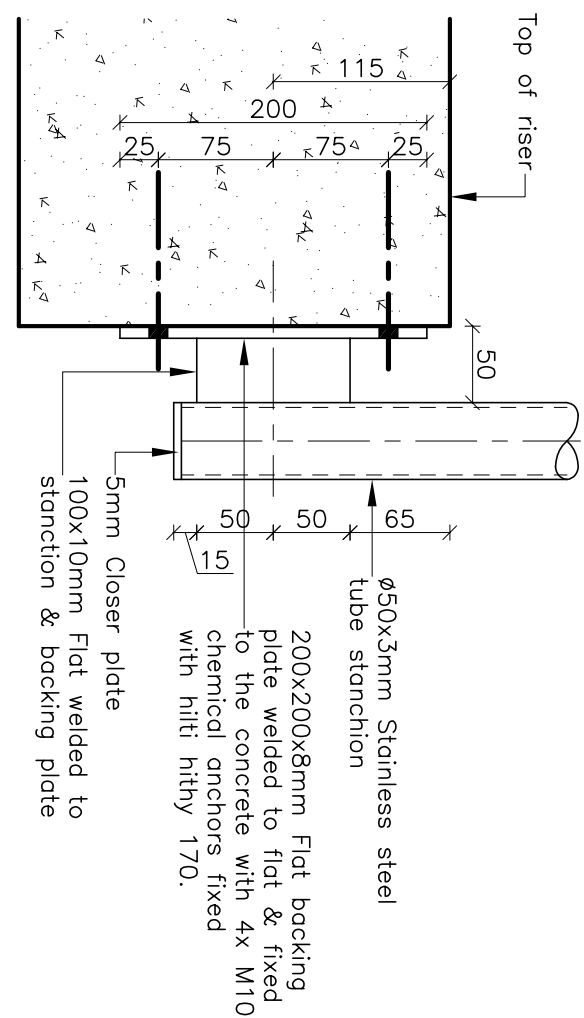
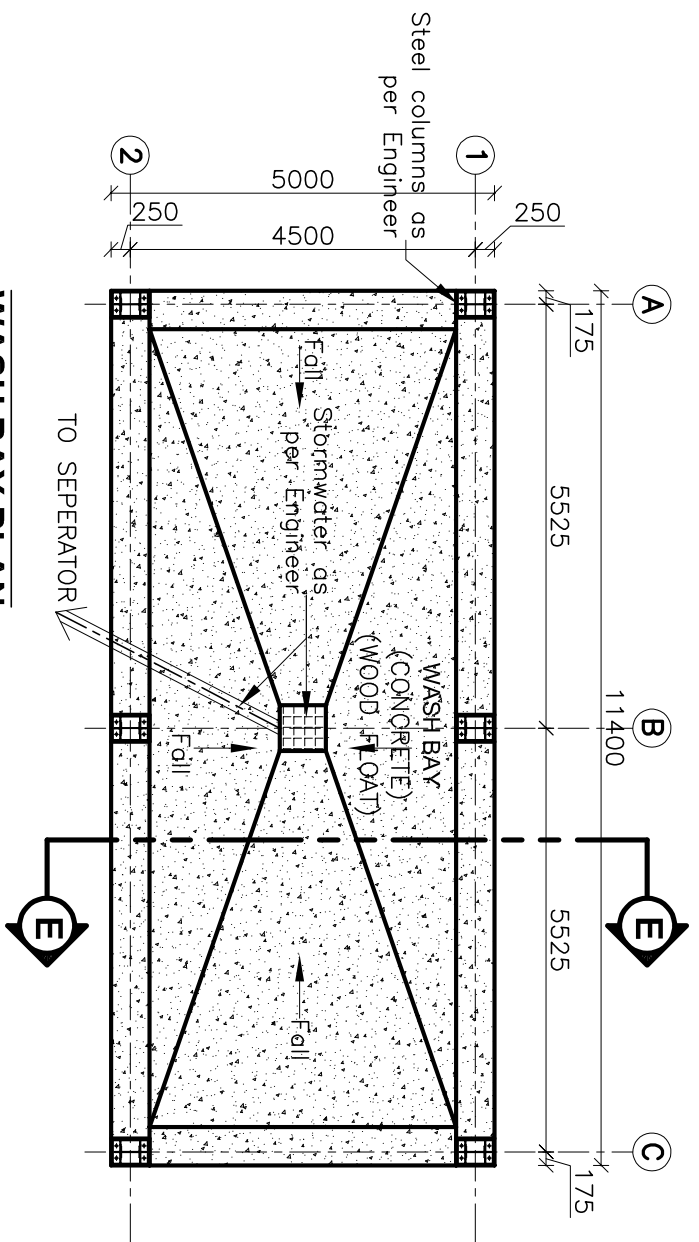


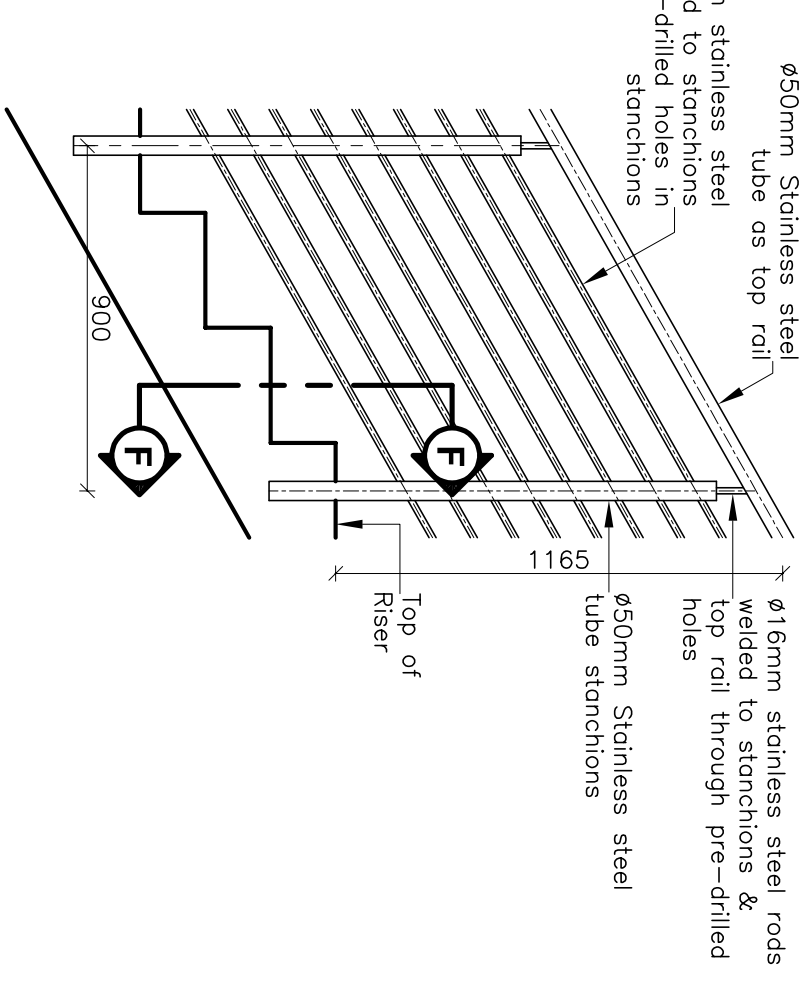
GROUND CREW BUILDING PLAN
SCALE: 1 : 100



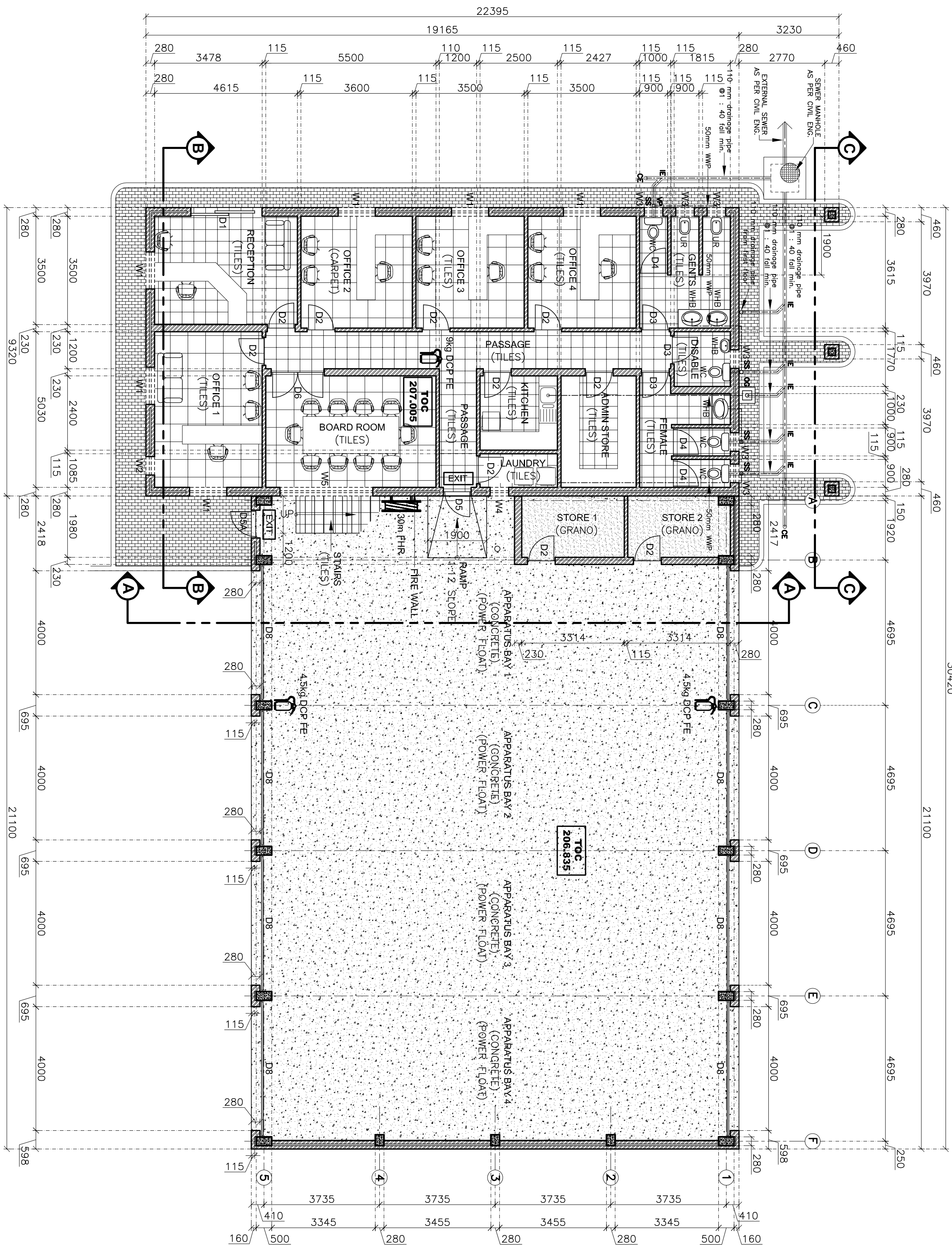
SECTION F-F
Scale 1:5



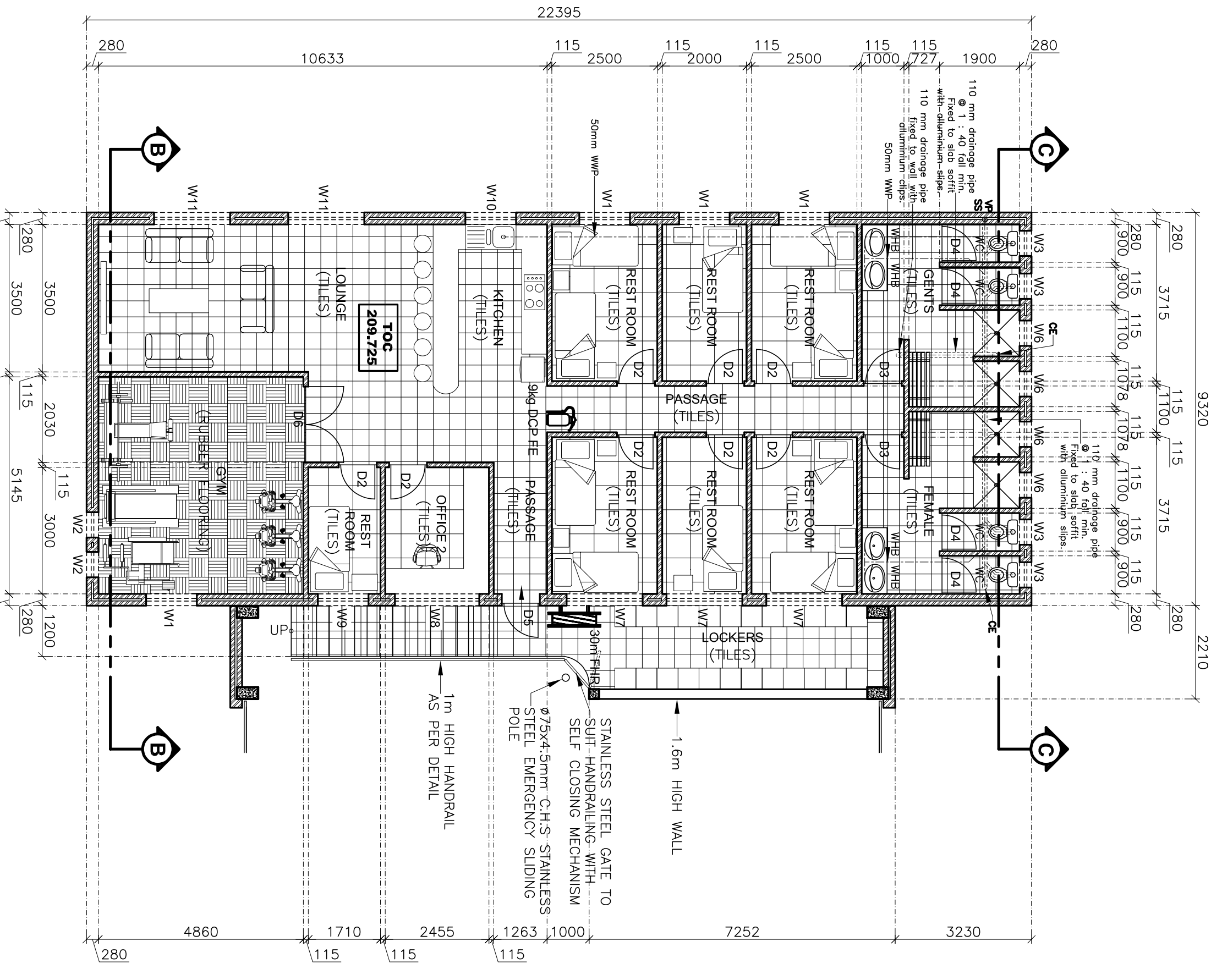
WASH BAY PLAN
SCALE: 1 : 100



TYPICAL STEEL HANDRAIL DETAIL
Scale 1:20



ADMIN / APPARATUS BAY GROUND FLOOR PLAN
SCALE: 1 : 100



ADMIN / APPARATUS BAY FIRST FLOOR PLAN
SCALE: 1 : 100

- SPECIFICATIONS**
- FOUNDATIONS**
Reinforced concrete foundations as per engineer's specifications.
 - FOUNDATION WALLS**
A. 280mm cavity wall with butterfly wall ties at a rate of 2.5m² and brickwork every coarse to surface bed level. External skin above natural ground level to be facebrick. Internal skin to be 21 MPa solid clay bricks and cavity filled with 20MPa concrete.
B. 220/10mm internal wall to be 14 MPa solid clay bricks with brickwork every coarse.
 - SURFACE BEDS**
Reinforced concrete surface beds placed on approved filling as per engineer's specifications. Finish to be laid on 35mm cement screed laid on surface beds. Finishes as per layout plans.
 - WALLS**
A. 280mm cavity wall with butterfly wall ties at a rate of 2.5m² and brickwork every 4th coarse to little height after that every second coarse. Weepholes to be uniform and at 600mm centres. External skin to be facebrick. Internal skin to be 21 MPa solid clay bricks smooth plastered & painted.
B. 220/10mm internal wall to be 14 MPa solid clay bricks smooth plastered & painted.
 - FIRST & SECOND FLOOR SLABS**
Reinforced concrete slabs and beams as per engineer's specifications. Finish to be laid on 35mm cement screed laid on reinforced concrete slabs. Finishes as per layout plans.
 - STEEL COLUMNS**
Structural steel columns as per engineer's specifications.
 - CEILING**
Flat 6.4 mm rhinoboard skinned joints ceiling fixed to 36 x 38 mm bracing at max. 400mm c/c fixed to underside of suspended beam hung from truss fixed with rhino cornice. 100mm Thick 'Isoborn' mineral wool insulation laid onto ceilings between trusses as per manufacturer's specs.
 - APPARATUS BAY ROOF**
0.53mm AZ150 G550 'Klip-Lok 410' Zincalume ribbed steel sheets with a clean Colorplus 'E' finish in approved standard colour to suit on one side and a standard backing coat to reverse side. fixed to new purlins as per manufacturer's specifications. (Colour Charcoal). Install 30mm Lambdaboard as per manufacturer's specifications above new steel purlins. New steel purlins and trusses as per engineer's specifications.
 - ADMIN ROOF**
0.53mm AZ150 G550 'Klip-Lok 410' Zincalume ribbed steel sheets with a clean Colorplus 'E' finish in approved standard colour to suit on one side and a standard backing coat to reverse side. fixed to timber purlins as per manufacturer's specifications. (Colour Charcoal). Stalation FR430 grade aluminium foil insulation sheathing fixed onto timber purlins with 150mm stapled laps and double-sided tape at edges where required as per manufacturer's specifications. Roof sheathing laid onto stellation and fixed to 76 x 50mm grade 5 S.A. Pine timber purlins @ 1000mm centres max fixed to prefabricated roof trusses @ 1000mm max. Roof trusses to be fixed to brick wall with 38 x 1.2mm galv steel roof anchors built into brickwork six coarses down. Prefabricated trusses manufactured by specialist in accordance with SABS 0162 0163.
 - GROUND CREW ROOF**
0.53mm AZ150 G550 'Klip-Lok 410' Zincalume ribbed steel sheets with a clean Colorplus 'E' finish in approved standard colour to suit on one side and a standard backing coat to reverse side. fixed to timber purlins as per manufacturer's specifications. (Colour Charcoal). Stellation FR430 grade aluminium foil insulation sheathing fixed onto timber purlins with 150mm stapled laps and double-sided tape at edges where required as per manufacturer's specifications. Roof sheathing laid onto stellation and fixed to 76 x 50mm grade 5 S.A. Pine timber purlins @ 1000mm centres max fixed to prefabricated roof trusses @ 1000mm max. Roof trusses to be fixed to brick wall with 38 x 1.2mm galv steel roof anchors built into brickwork six coarses down. Prefabricated trusses manufactured by specialist in accordance with SABS 0162 0163.
 - WASH BAY ROOF**
0.53mm AZ150 G550 'Klip-Lok 410' Zincalume ribbed steel sheets with a clean Colorplus 'E' finish in approved standard colour to suit on one side and a standard backing coat to reverse side. fixed to new purlins as per manufacturer's specifications. (Colour Charcoal). New steel purlins and rafters as per engineer's specifications.
 - WINDOWS**
Standard anodised aluminium window frames as per WISPECO clip 44 or equal approved. Colour Charcol. Glass to be 1500 pascel win packing as per AAMMSA standards.
 - CILLS**
Flush plaster and painted window cills internally. Face brick on edge externally.
 - SEWERS**
Width of trench to be wide enough for workman to work in comfortably. Continuous bedding to be selected granular, non cohesive material and compacted to a depth of min 100mm. The pipe must be back filled immediately after laying, leaving joints exposed for testing. uPVC pipes and fittings are manufactured to SABS No. 791-1986. uPVC pipes are designed for normal and heavy duty and joining can be either solvent weld or rubber joint. Cappings All sewer pipes exiting building to be concealed in cavity walls an closed up. External sewer as per engineer's specifications.
 - Electrical**
All electrical work as per Electrical Engineer's specifications.
 - Mechanical / Fire**
All mechanical and fire work as per Mechanical Engineer's specifications.

THIS DRAWING AND DESIGN ARE CONFIDENTIAL AND THE PROPERTY OF KANTEY & TEMPLER AND MAY NOT BE DISCLOSED TO A THIRD PARTY, COPIED/REPRODUCED IN WHOLE OR IN PART WITHOUT THE WRITTEN PERMISSION OF KANTEY & TEMPLER.

GENERAL NOTES

- All materials and construction methods must comply with the National Building Regulations (act no.103 of 1977) including all amendments, as well as to all local authorities requirements and fixed strictly in accordance with the relevant manufacturer's specifications, unless explicitly specified differently.
- All dimensions must be verified on site.
- No alterations or corrections to this drawing are permitted after the commencement of construction.
- Never scale from this or any other drawing.

CONTROL SCHEDULE	
ADMIN / APPARATUS BAY	511.16m ²
Ground Floor Area	233.38m ²
First Floor Area	277.78m ²
Total Floor area	744.59m ²
GROUND CREW BUILDING	131.04m ²
Ground Floor Area	57.00m ²
WASH BAY	57.00m ²
Ground Floor Area	57.00m ²
TOTAL GROUND FLOOR AREA	699.20m ²
SITE AREA	5875.34m ²
SITE COVERAGE	11.90%



KANTEY & TEMPLER

CONSULTING ENGINEERS

Engineering & Urban Development

P.O. BOX 458 GEORGE 6500H AFRICA 6530 TEL +27 44 874 2172

CLIENT

Garden Route

DISTRICT MUNICIPALITY

PROJECT

NEW FIRE STATION FOR

GARDENROUTE DISTRICT

MUNICIPALITY

ERF 22494/22495

GEORGE

TITLE

PLAN LAYOUTS

DRW No. G5211BA-ARC-001