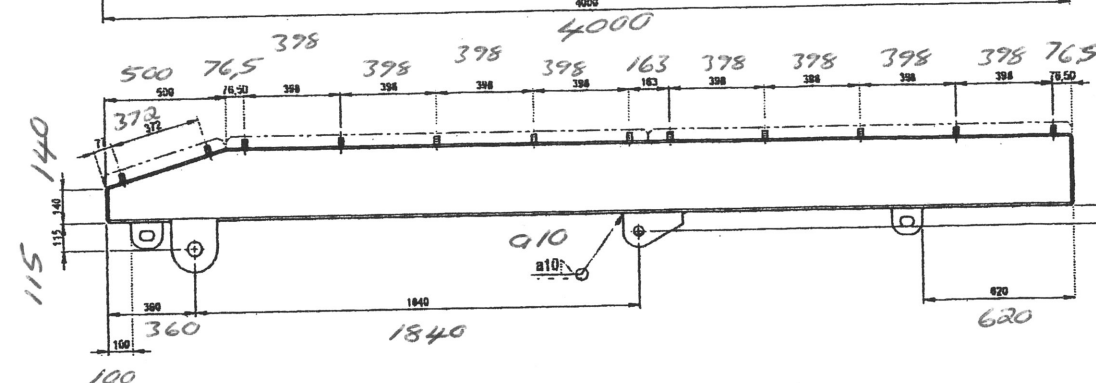
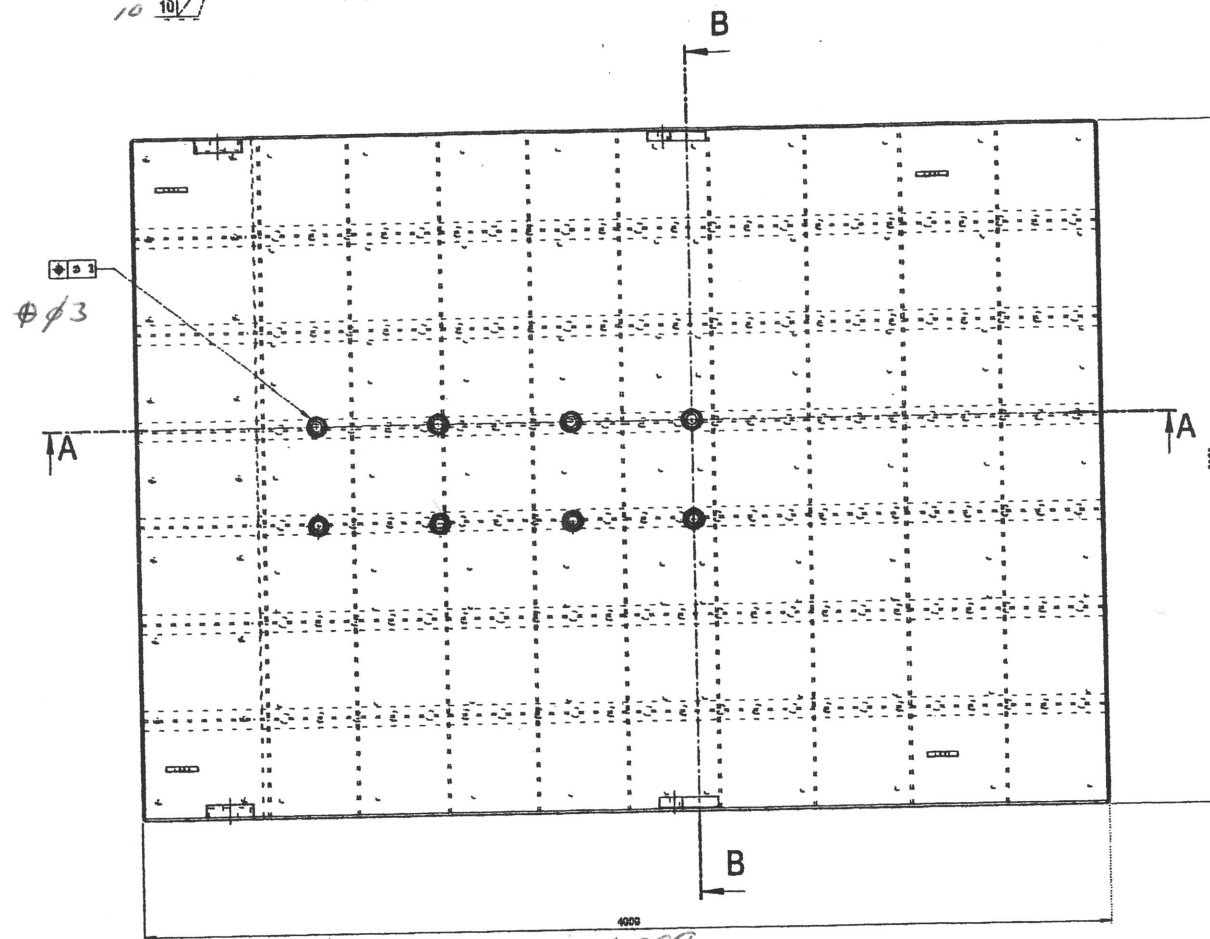
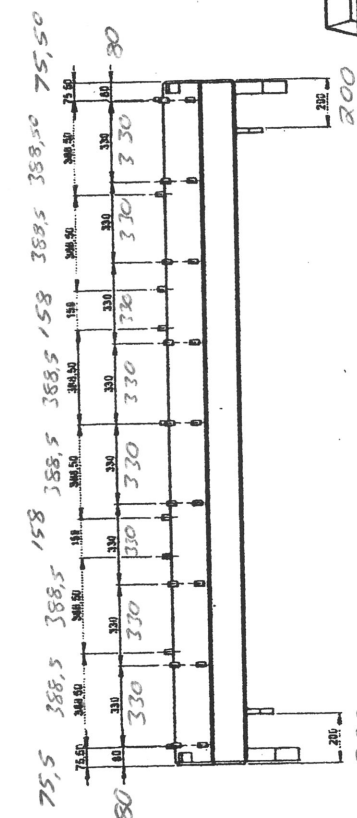
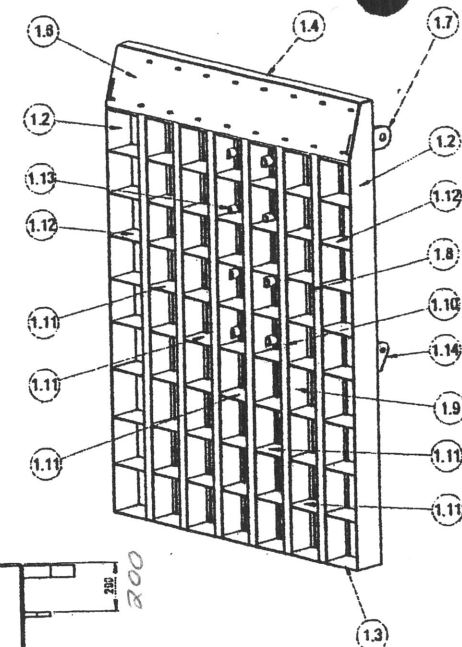




PAINTING
ACCORDING TO ISO 12944 CORROSION CATEGORY C5-M PAINT SYSTEM S8.01
TOTAL DRY FILM THICKNESS: 610 MICRONS (INTERMEDIATE COAT 500 MICRONS)
FILM THICKNESS CONTROL SHALL BE COMPLEMENTED WITH PINHOLE DETECTOR CONTROL
COLOUR: BLACK RAL 9005



THE CONSTRUCTION MUST BE COMPLETELY SEALED TO PREVENT THE INGRESS OF WATER.
HYDROSTATIC TEST PROCEDURE
DRILL ONE HOLE OF 18 mm DIAMETER IN THE PANEL.
FIT AND WELD ½" B.S.P. SOCKET
FIT NIPPLES - VALVES AND CONNECT AIR LINE
TEST TO 0.15 bar FOR 15 MINUTES MINIMUM
CHECK ALL EXTERNAL WELDS WITH SOAPY WATER
AFTER ANY REPAIRS, FIT ½" B.S.P. BUNG WITH PTFE TAPE



Ø25x45x4	2.18	108	WASHER	Ø 25x45x4 - DIN 125	316		
M20 - DIN 459	1.17	108	THIN NUT	M20 - DIN 439	316		
M20 x 35	1.18	108	WELD STUD	M20x35	316LN		
20 x 130 x 10	1.15	4	STEEL PLATE	20x130x110	S355J2G3		
40 x 240 x 140	1.14	2	STEEL PLATE	40x240x140	S355J2G3		
#53.5 M45X100	1.13	8	THREADED INSERT	Ø 82.5M48x100	316LN		
10 x 292 x 280	1.12	18	STEEL PLATE	10x292x280	S355J2G3		
10 x 355 x 280	1.11	45	STEEL PLATE	10x355x280	S355J2G3		
10 x 3470 x 50	1.10	6	STEEL PLATE	10x3490x60	S355J2G3		
8 x 3750 x 260	1.9	6	STEEL PLATE	8x3580x260	S355J2G3		
10 x 3750 x 50	1.8	6	STEEL PLATE	10x3580x60	S355J2G3		
50 x 475 x 70	1.7	2	STEEL PLATE	50x475x190	S355J2G3		
10 x 2750 x 512.5	1.6	1	STEEL PLATE	10x2780x512.5	S355J2G3		
10 x 3470 x 2750	1.5	1	STEEL PLATE	10x3490x2780	S355J2G3		
10 x 2750 x 130	1.4	1	STEEL PLATE	10x2780x130	S355J2G3		
10 x 2750 x 280	1.3	1	STEEL PLATE	10x2780x280	S355J2G3		
10 x 3750 x 250	1.2	2	STEEL PLATE	10x3580x280	S355J2G3		
10 x 3750 x 2750	1.1	1	STEEL PLATE	10x3580x2780	S355J2G3		
Item	Qty	Description			Dimension	Material	Weight
DRAWN							
CHECKED							
APPROVED							
SCALE	1:1	TITLE:			STEEL PANEL ITEM 1	DRAWING NUMBER:	
PRD. NO.					PORT OF NGOURA, SOUTH AFRICA		