



REHABILITATION OF BERWICK 341 ASBESTOS MINE

CONTRACT: MTK 03/2024

VOLUME 3

CONTRACT

PART 4:

SITE INFORMATION



C4 SITE INFORMATION

GENERAL

This section describes the site at the time of tender to enable the tenderer to price their tender and to decide upon his method of working and programming and risks.

CONTENTS

Clause	Description	Page no.
SI 1	SITE INFORMATION	SI.2
SI.2	SITE LOCATION	SI.2
SI.3	EXISTING CONDITIONS	SI.5
SI 4	SERVICES AND EXISTING INFRASTRUCTURE	SI.5
SI 5	SITE GEOLOGY	SI.7
SI 6	WIND DIRECTION	SI.9
SI 7	HEALTH AND SAFETY SPECIFICATION	SI.11
SI 8	ENVIRONMENTAL MANAGEMENT PLAN	SI.12



SI 1 SITE INFORMATION

The Berwick 341 asbestos mine site is located in the Joe Morolong Local Municipality in the Northern Cape Province, South Africa. The mine site is approximately located at the coordinates: 26°24'16.98"S and 23° 4'49.75"E. The nearest communities to the site are Tsiloane, Kome and Perth, which are about a distance of 2.5 km, 7km and 9km respectively.

SI 2 SITE LOCATION

Figure 1 provides a locality map and shows the access route to site. Vehicle access is available from Tsiloane to within meters of the Berwick 341 CGS unique identifier points.

To reach the Berwick 341 site from Vryburg, the R378 is taken towards North-West direction for 107km. From the R378, a left turn is made to R389 and drive for approximately 27km and make another left turn to a road leading past Shalaneng Village. The nearest communities to the site are Tsiloane, Kome and Perth, which are about a distance of 2.5 km, 7km and 9km respectively. Berwick 341 341 farm is in a fair condition and can be driven with a 4x2 bakkie.

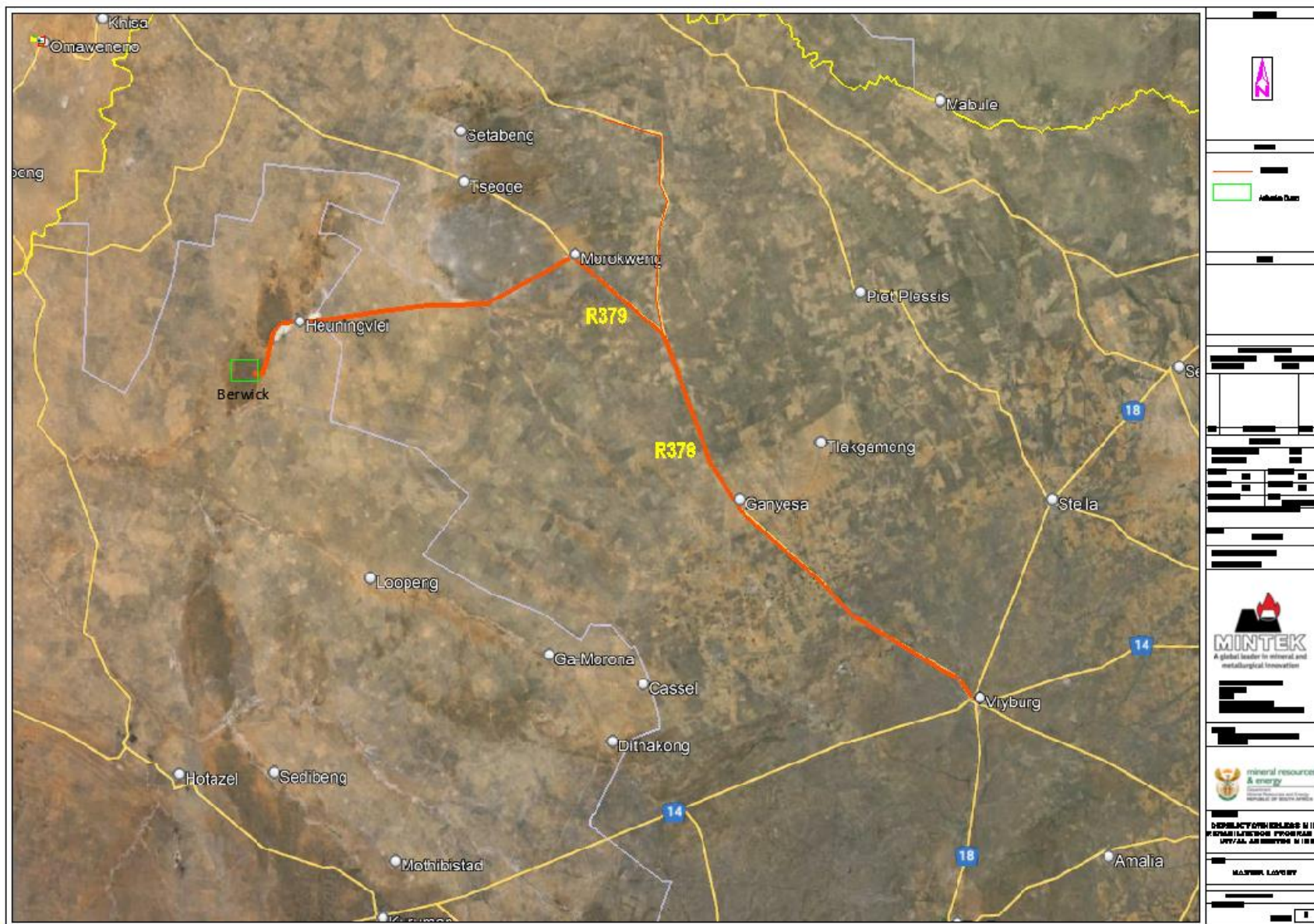


Figure 3: Berwick 341 mine locality map

SI 3 EXISTING CONDITIONS

Land use of the surrounding environment is largely wilderness area. Berwick 341 area has a semi-arid natural vegetation which makes it prone to winds that can carry asbestos fibres to the nearest communities. Asbestos rock dumps and fine asbestos fibres were identified in the vicinity of the site as shown in **Figure 2**.



Figure 2: Asbestos fibres and rock dumps

SI 4 SERVICES AND EXISTING INFRASTRUCTURE

Access roads are available at various areas around the site however there is no direct access route which can be driven with a vehicle. Potable water and electricity is not available on site.

No mine infrastructure was observed within the Berwick 341 farm boundary, however a strong presence of asbestos dumps can be seen around the mined areas.

Berwick 341 341 site

There are dumps that contain loose asbestos fibers which can easily be airborne as can be seen in **Figure 3**. The prevalence of these materials is indicative of level of contamination and the long-term health risk due to potential asbestos fiber release.



Figure 3: Partially vegetated Asbestos dump with fibres that can easily be carried away by water or wind.



Figure 4: Asbestos containing discard with loose fibres.

The following **Figure 5 - 8** shows wide spread of waste rocks and fine asbestos discard which is indicative of contamination and poses a long-term health risk due to potential asbestos fiber release.



Figure 5: Unrehabilitated asbestos shafts.



Figure 6: Waste rock strewn across most of the area.



Figure 7. Further waste rock on water drainage path.



Figure 8: Asbestos containing discard from trenches.



Volume 3

Part 4: Site Information

SI 5 SITE GEOLOGY

Geotechnical assessment not available.



SI 6 WIND DIRECTION

The wind rose in **Figure 12** below shows the Vryburg Municipality/ Naledi Local Municipality's wind directions. It also shows how many hours per year the wind blows from the indicated direction.

Communities that could therefore potentially be affected include Kome, Perth, and Tsiloane located south of the Berwick 341 sites. The Berwick 341 asbestos site has loose asbestos fibres and asbestos containing waste rock, and are partially vegetated, therefore posing a significant pollution risk.

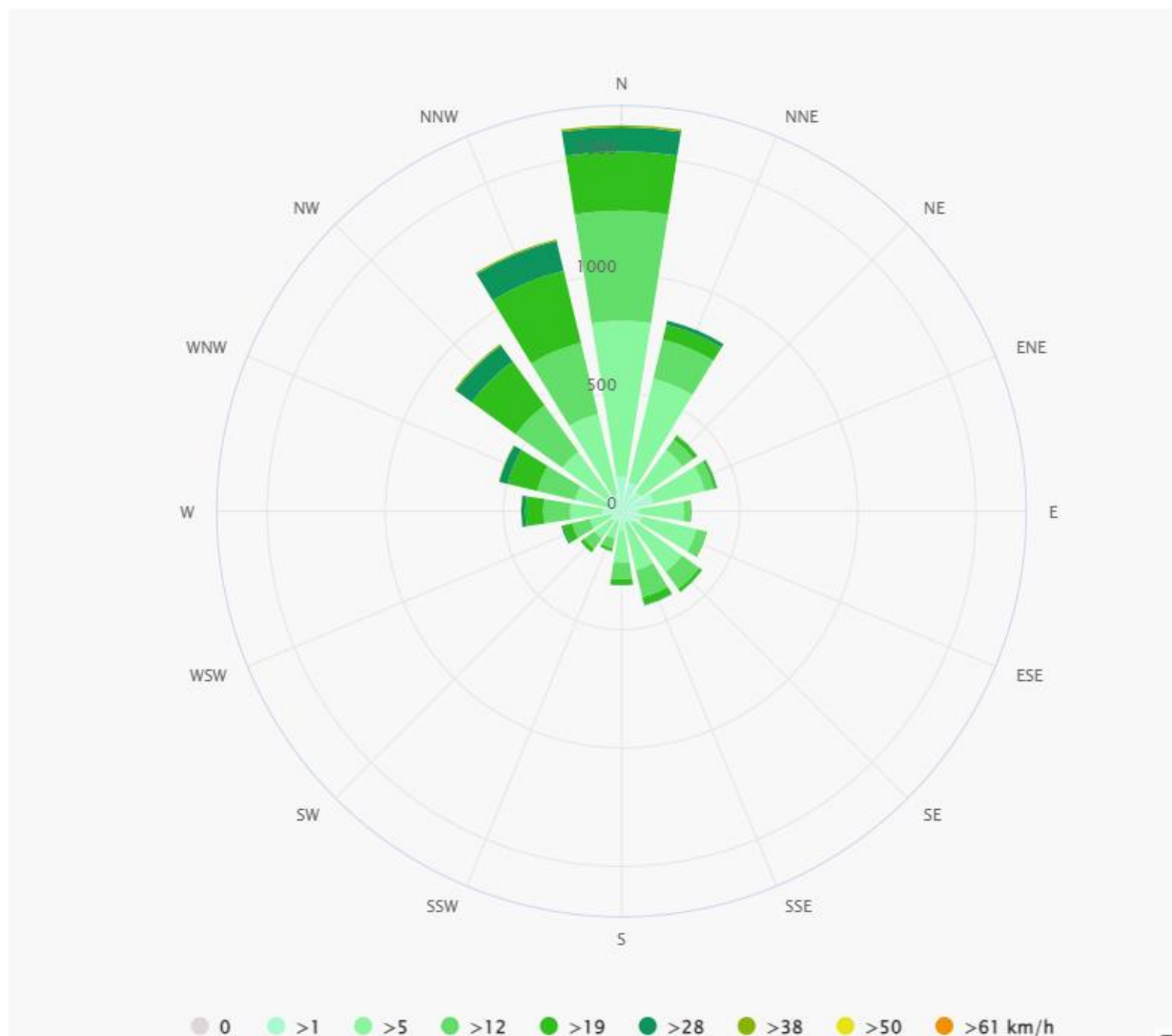


Figure 12: Wind rose for Vryburg and surrounding areas.



Volume 3

Part 4: Site Information

SI 7 HEALTH AND SAFETY SPECIFICATION

See attached (Appendix A)

SI 8 ENVIRONMENTAL MANAGEMENT PLAN

See attached (Appendix B)



APPENDIX A

HEALTH AND SAFETY SPECIFICATION



APPENDIX B

ENVIRONMENTAL MANAGEMENT PLAN