
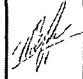

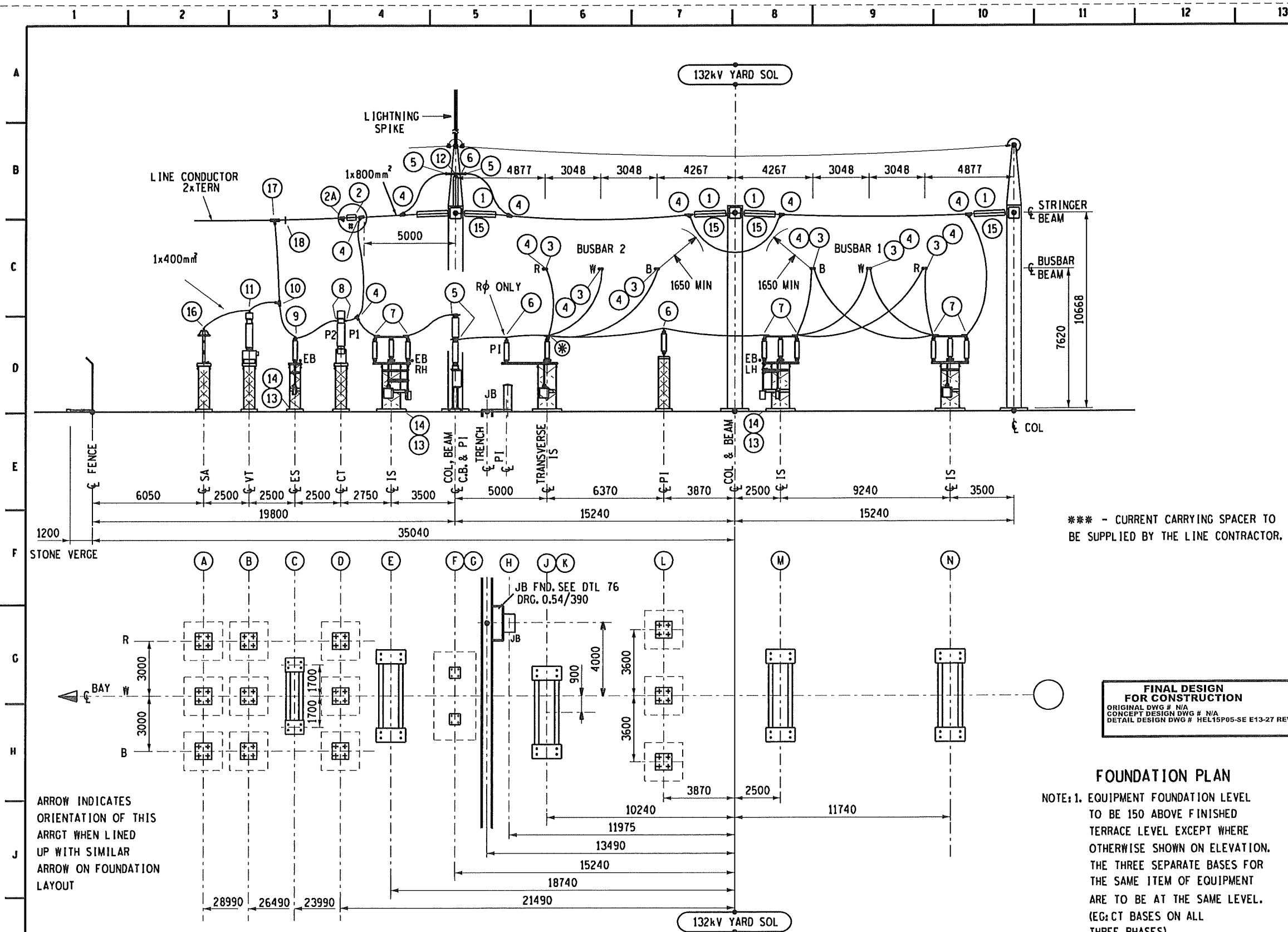


	1	2	3	4	5	6	7	8	
	SH	DESCRIPTION	REV						
	0	BAY SCHEDULE COVER SHEET	0						
A		132 kV.							A
	27	FEEDER 6 BAY	0						
	27A	FEEDER 6 BAY EARTHING	0						
B									B
C									C
D									D
E									E
F									F
	1	2	3	4	5	6	7	8	

**FINAL DESIGN
FOR CONSTRUCTION**
ORIGINAL DWG #: 0.12/5572 - 0 - REV 15
CONCEPT DESIGN DWG #: N/A
DETAIL DESIGN DWG #: HEL15P05-SE-E13 - 0 REV 0

0	FIRST ISSUE.			11/11/19	
REV	REVISION DESCRIPTION	BY	CHKD	AUTH	DATE
 Eskom		ESKOM HOLDINGS LIMITED SOC Ltd 2002/015527/30			
<div>©</div> <div>HELIOS</div> <div>400/132/50kV YARD BAY LAYOUT AND EQUIPMENT SCHEDULE</div>					
HEL15P05-SE-E13		SHEET NUMBER	REVISION		
		0	0		



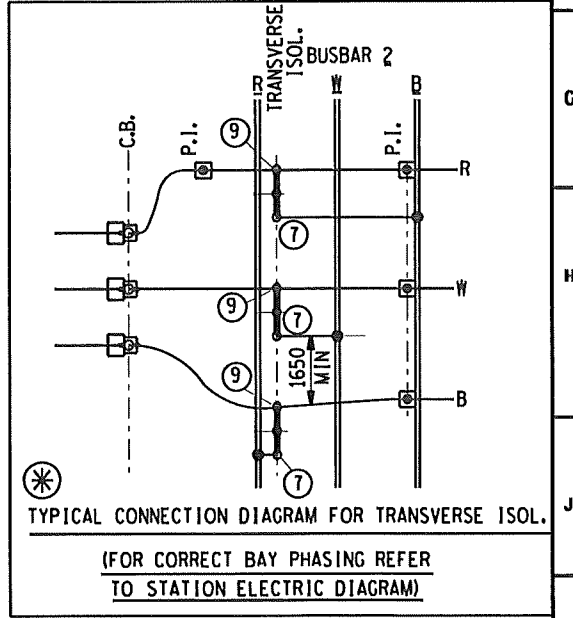
ARROW INDICATES ORIENTATION OF THIS ARRGT WHEN LINED UP WITH SIMILAR ARROW ON FOUNDATION LAYOUT

FINAL DESIGN FOR CONSTRUCTION
 ORIGINAL DWG # N/A
 CONCEPT DESIGN DWG # N/A
 DETAIL DESIGN DWG # HEL15P05-SE E13-27 REV 0

FOUNDATION PLAN

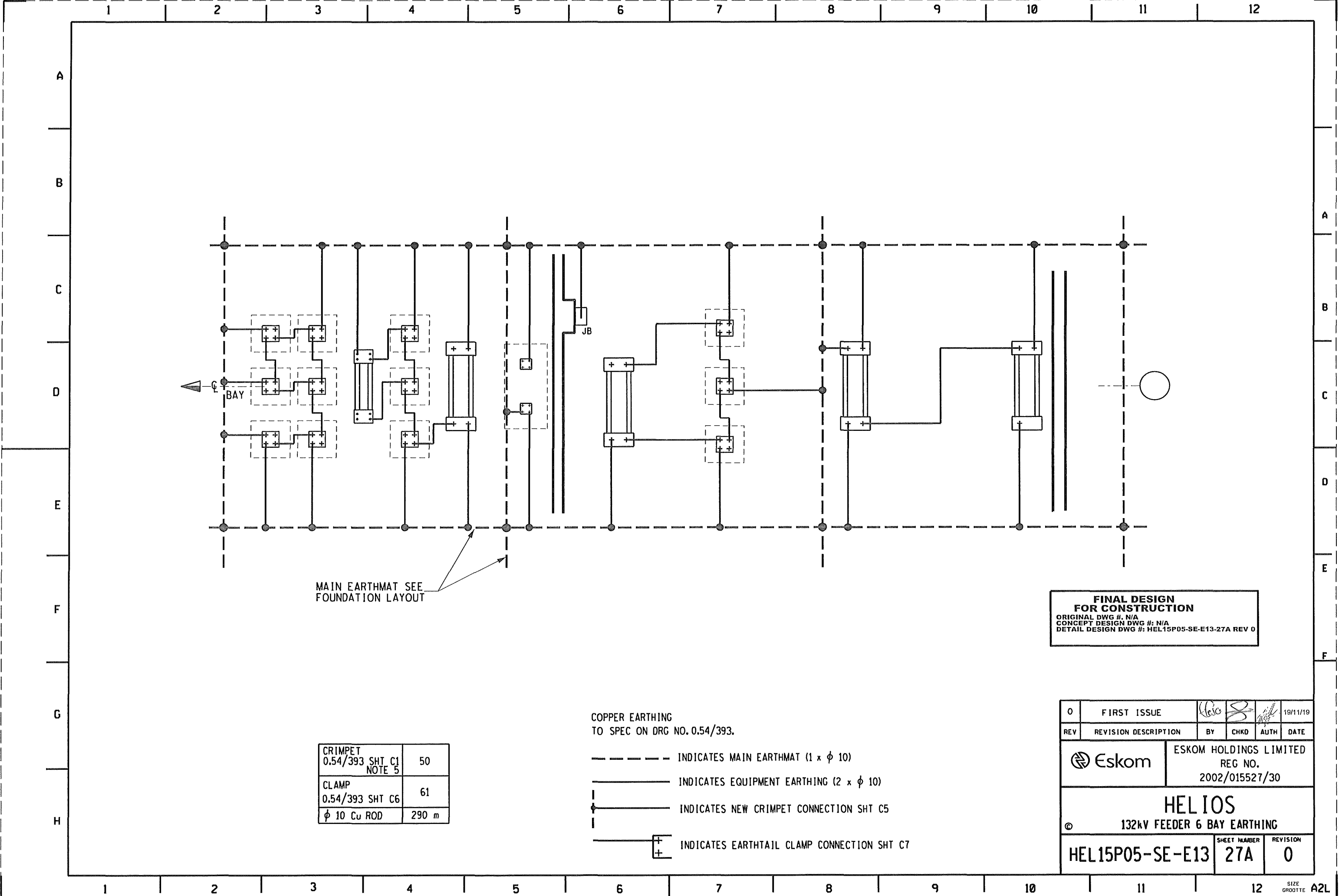
NOTE: 1. EQUIPMENT FOUNDATION LEVEL TO BE 150 ABOVE FINISHED TERRACE LEVEL EXCEPT WHERE OTHERWISE SHOWN ON ELEVATION. THE THREE SEPARATE BASES FOR THE SAME ITEM OF EQUIPMENT ARE TO BE AT THE SAME LEVEL. (EG: CT BASES ON ALL THREE PHASES).

BAY DESIGNATION				
CONDUCTOR AND HARDWARE SCHEDULE			132FF71	
			SIZE	QUANT.
CONDUCTOR	BUSBAR	2x800mm ²	EXIST	
	STRINGER	1x800mm ²	92 m	
	DROPPER	1x800mm ²	175 m	
	DROPPER	1x400mm ²	15 m	
	EQUIPMENT EARTHING		50x3 Cu	55 m
	DESCRIPTION	MK	ITEM	QUANT.
	INSULATOR STRING ASSEMBLY	1	A41	12
	FLYING INSULATOR ASSEMBLY	2	A41	3
	LONG ROD INSULATOR-POLYMERIC	2A	-	3
	CURRENT CARRING SPACER	3	ESC-B	6
	CLAMP	4	ETC-K	27
		5	EPC-D	19
		6	EXCP-D	7
		7	EPC-E	27
		8	EXC-Q	6
		9	EPT-B	6
		10	ETC-J	3
		11	EX-D	3
		1m x 38mm DIA. AL ROD	12	-
	EARTHING STUD 20kA	13	-	18
	"L" Cu BRACKET 80kA	14	-	6
	LONG ROD INSULATOR-POLYMERIC	15	-	15
	CLAMP	16	EXC-L	3
LINE CLAMP	17	ETC-D	3	
CURRENT CARRYING SPACER ***	18	-		



FOUNDATION		A	B	C	D	E	F	G	H	J	K	L	M	N
FOUNDATION DRG No 0.54/		4358	4358	8293	4358	7512	7511	BEAM MOUNT.	4713 SHT 1	---	7512	4358	7512	7512
EQUIPMENT		SA	VT	ES	CT	ISOLATOR	CB	PI	JB	PI	IN-LINE ISOL	PI	ISOLATOR	ISOLATOR
EQUIPMENT RATING	AMPS	---	---	---	2500	2500	3150	---	---	---	2500	---	2500	2500
	KA	---	---	40	40	40	40	---	---	---	40	---	40	40
ESKOM NATIONAL CONTRACT														
EQUIPMENT STEM/PAD SIZE		26φ	26φ	8HHP	φ60	8HHP	8HHP	127 PCD	---	127 PCD	8HHP	127 PCD	8HHP	8HHP
MAKER		e-LEK	ITT	ACTOM	TRENCH	ACTOM	SIEMENS	PPC	---	PPC	ACTOM	PPC	ACTOM	ACTOM
OUTLINE DRG No 0.54/		8349	7789	7603	7649	7594	9643	8300	---	8300	7598	8301	7593	7592
STEELWORK	SUPPORT	302	302	8400	302	7602	---	---	---	---	7698	303	7603	7689
	CAP/ADAPTOR	306/6326	306	WITH ES	306	WITH ISOL	WITH CB	787	---	5597	WITH ISOL	3512	WITH ISOL	WITH ISOL

REV	DESCRIPTION	BY	CHKD	AUTH	DATE
0	FIRST ISSUE				19/11/19
<div> ESKOM HOLDINGS LIMITED REG NO. 2002/015527/30 </div>					
<div> HEL IOS 132kV FEEDER 6 BAY </div>					
HEL15P05-SE-E13				SHEET NUMBER 27	REVISION 0




MAIN EARTHMAT SEE
FOUNDATION LAYOUT

**FINAL DESIGN
FOR CONSTRUCTION**
ORIGINAL DWG #: N/A
CONCEPT DESIGN DWG #: N/A
DETAIL DESIGN DWG #: HEL15P05-SE-E13-27A REV 0

CRIMPET 0.54/393 SHT C1 NOTE 5	50
CLAMP 0.54/393 SHT C6	61
φ 10 Cu ROD	290 m

COPPER EARTHING
TO SPEC ON DRG NO. 0.54/393.

- INDICATES MAIN EARTHMAT (1 x φ 10)
- INDICATES EQUIPMENT EARTHING (2 x φ 10)
- INDICATES NEW CRIMPET CONNECTION SHT C5
- +— INDICATES EARTHTAIL CLAMP CONNECTION SHT C7

0	FIRST ISSUE	Heio	S	19/11/19	
REV	REVISION DESCRIPTION	BY	CHKD	AUTH	DATE
 Eskom		ESKOM HOLDINGS LIMITED REG NO. 2002/015527/30			
HEL IOS					
©	132kV FEEDER 6 BAY EARTHING				
HEL15P05-SE-E13			SHEET NUMBER 27A	REVISION 0	