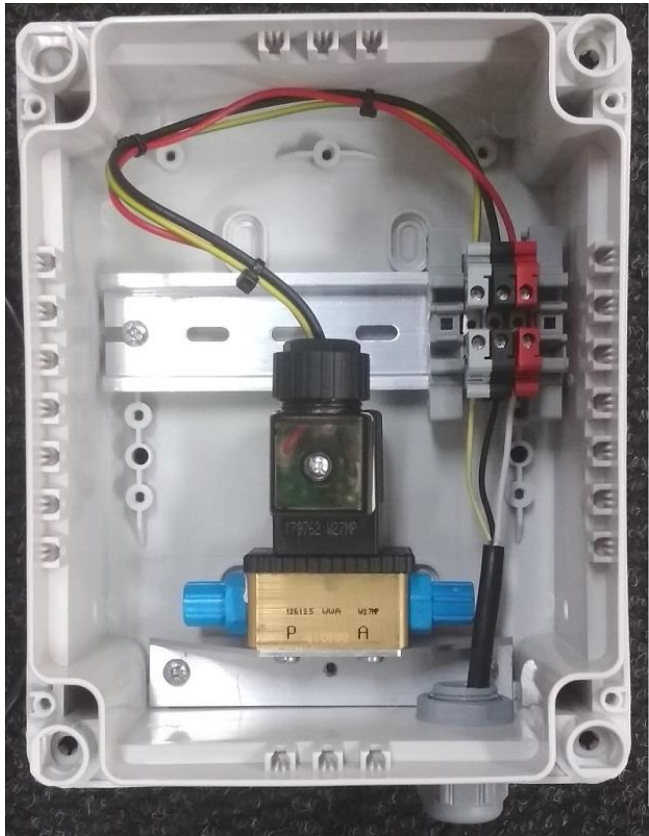


A3

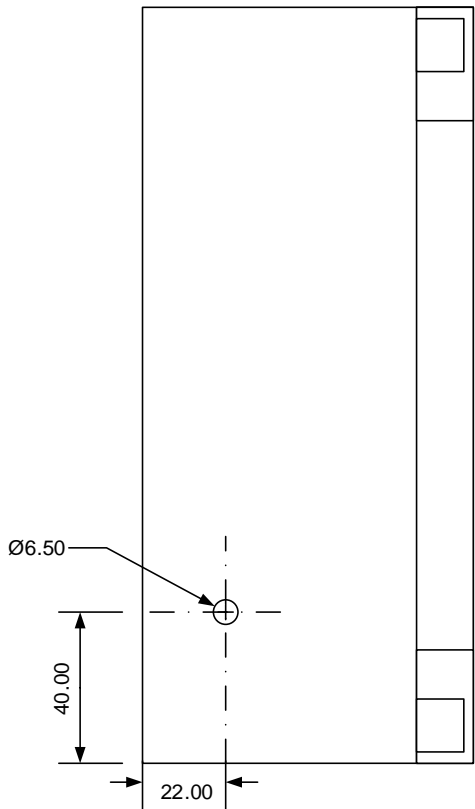


Parts List

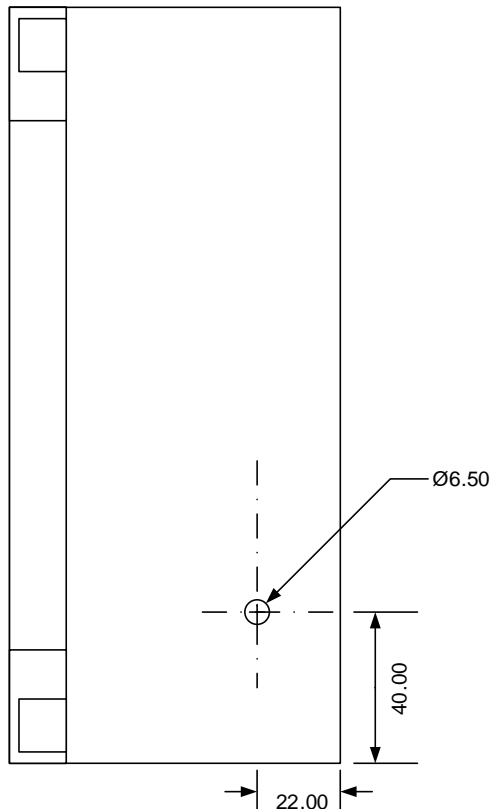
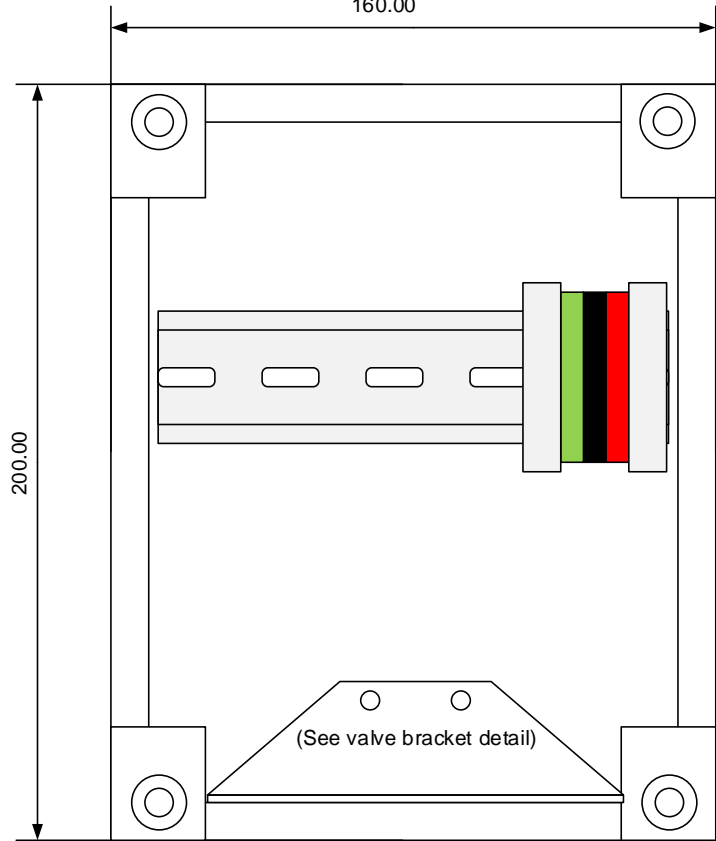
1. VALVE: Burkert 24DC BRASS 2-PORT 125301 (Type 6013)
2. Box Legrand: 035951
- (terminals, wiring, glands by supplier)

NOTES:

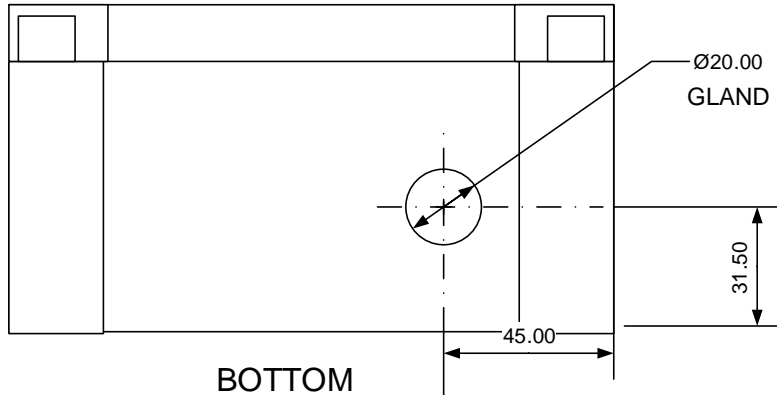
1. ROUNDED EDGES (NOT SHARP)
2. TERMINAL TO SOLENOID WIRE: RED, BLACK, EARTH WIRES 0.5MM, 250MM LENGTH
3. CYNOPROBE WIRE: 1.5M, 60MM STRIPPED FROM BOTH ENDS, FERRULES ON ALL ENDS.
4. DIN RAIL 135MM ALUMINIUM
5. NOT TO SCALE



LEFT



RIGHT



BOTTOM

THIS DRAWING IS CONFIDENTIAL AND IS THE PROPERTY OF MINTEK. IT MAY NOT BE USED IN THE MANUFACTURE, DESIGN OR INSTALLATION WITHOUT THE WRITTEN PERMISSION OF MINTEK.

Air Purge Box - CYNOPROBE V3.5



MINTEK

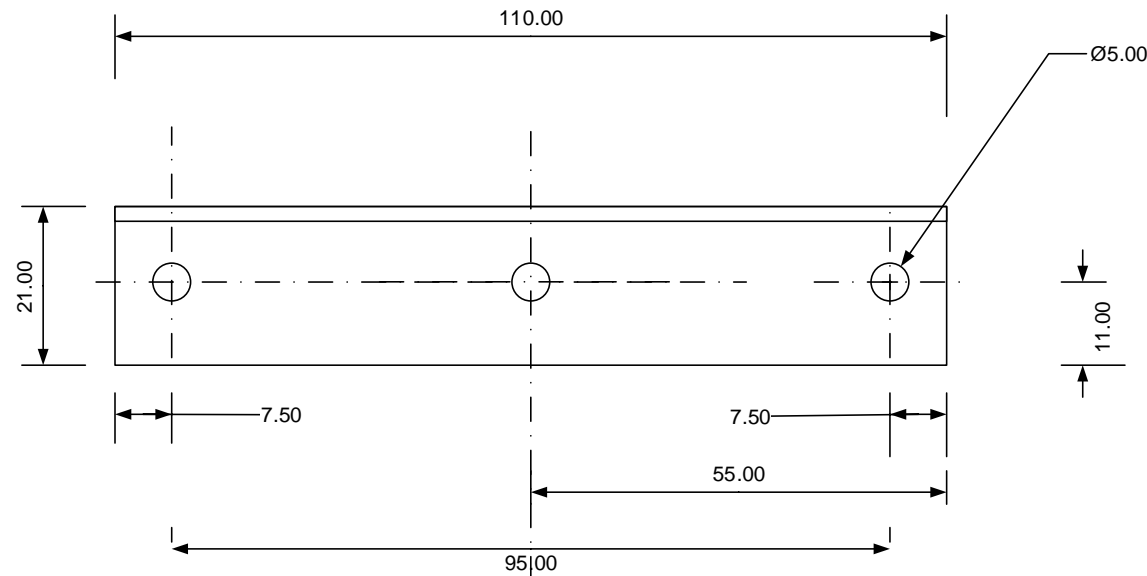
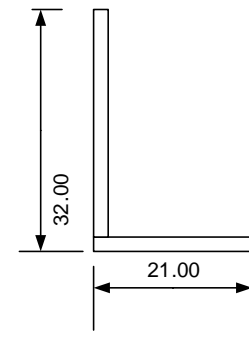
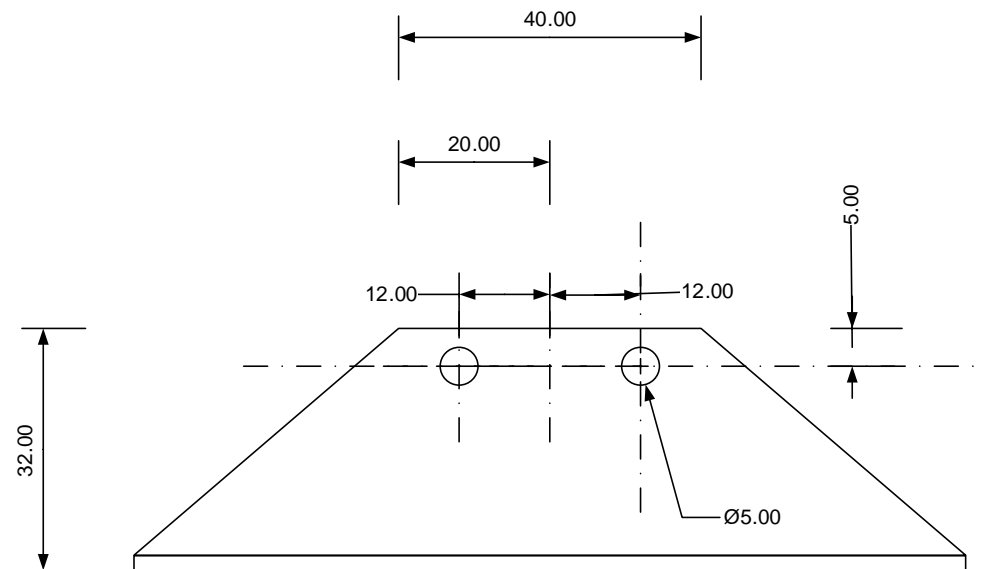
PRIVATE BAG X3015 RANDBURG 2125
GAUTENG SOUTH AFRICA +27 11 709 4111

4			
3			
2			
1			
0	APPROVED	2018/11/06	NA
REV	DESCRIPTION	DATE	BY
REVISIONS			



SIZE	FSCM NO	DWG NO	REV
SCALE	1:1	SHEET	1 OF 2
MAC-CYNV3-E-Air Purge Box-R1		1	

A3

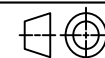


NOTES:

1. ROUNDED EDGES (NOT SHARP)
2. 2MM ALUMINIUM 32x21MM L-BRACKET
3. ALL HOLES 5MM
4. NOT TO SCALE

4			
3			
2			
1			
0	APPROVED	2018/11/06	NA
REV	DESCRIPTION	DATE	BY
REVISIONS			

THIS DRAWING IS CONFIDENTIAL AND IS THE PROPERTY OF MINTEK. IT MAY NOT BE USED IN THE MANUFACTURE, DESIGN OR INSTALLATION WITHOUT THE WRITTEN PERMISSION OF MINTEK.



Valve Bracket - CYNOPROBE V3.5



MINTEK

PRIVATE BAG X3015 RANDBURG 2125
GAUTENG SOUTH AFRICA +27 11 709 4111

SIZE	FSCM NO	DWG NO	REV
SCALE	1:1	SHEET	2 OF 2