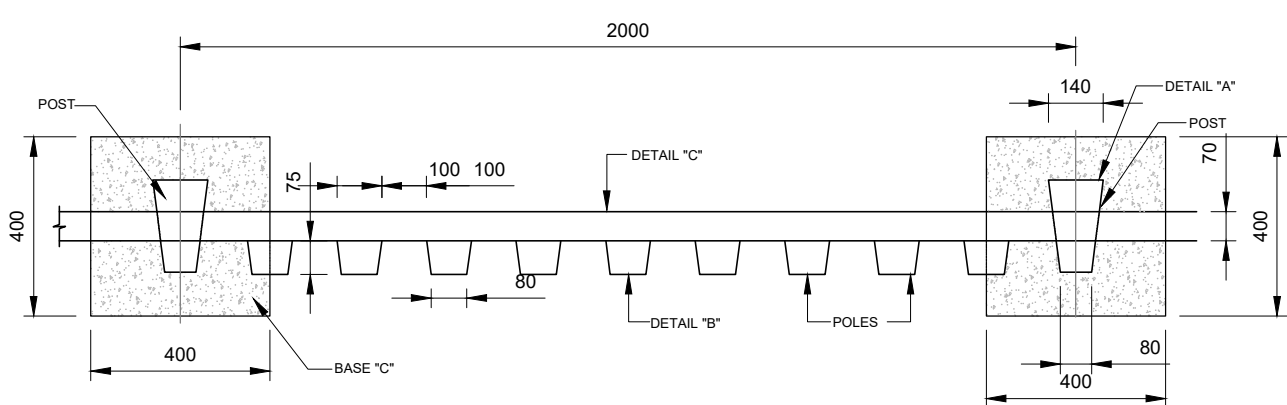


TYPICAL DOUBLE SWING GATE

SCALE 1:20

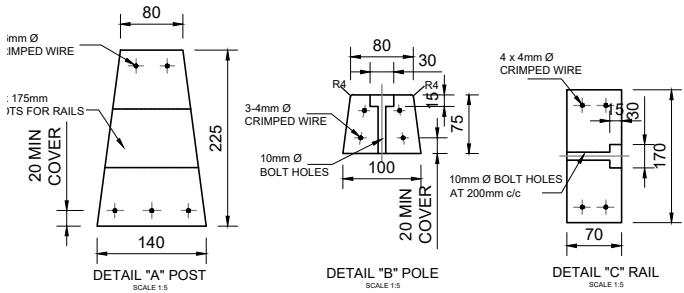
NOTE:

1. THE SLIDING GATE AT THE MAIN ENTRANCE IS TO BE REPLACED WITH NEW 6m SLIDING GATE.
2. THE EXISTING SECOND GATE ON SOUTH BOUNDARY TO BE ASSESSED AT HE TIME OF CONSTRUCTION AND REPLACED IF DIRECTED (DOUBLE SWING GATE).
3. FENCE ON BOUNDARY WITH ERVEN 1800, 1885 AND 11492 TO BE CONFIRMED.

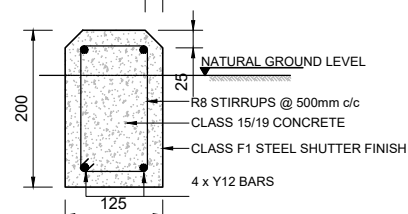


PANEL SECTION C-C

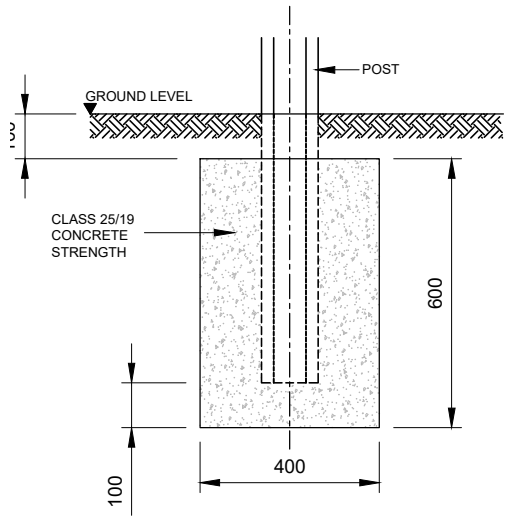
SCALE 1:10



SECTIONS OF PRECAST CONCRETE COMPONENT:

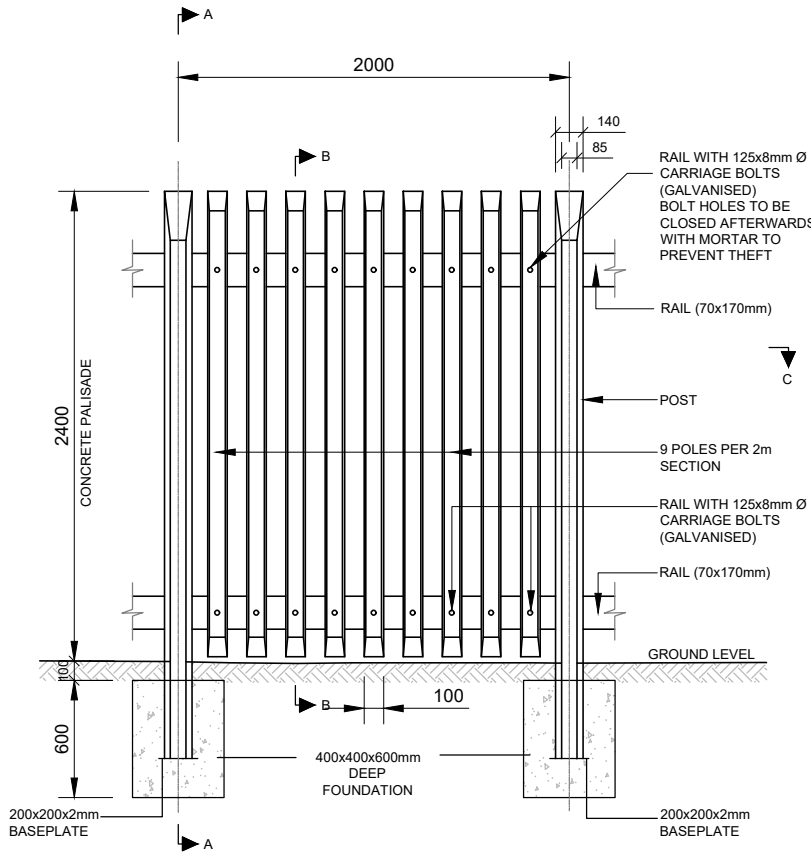


TYPICAL SECTION THROUGH CONCRETE GROUND BEAM



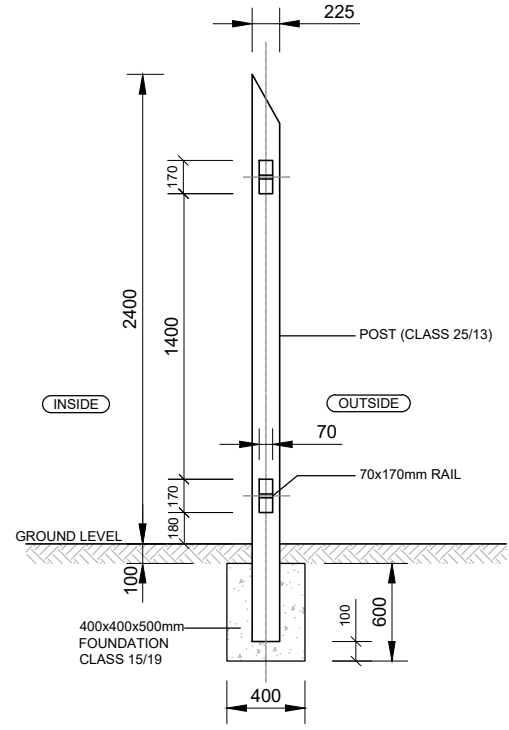
DETAILS OF POST FOOTING - DETAIL "X"

SCALE 1:10



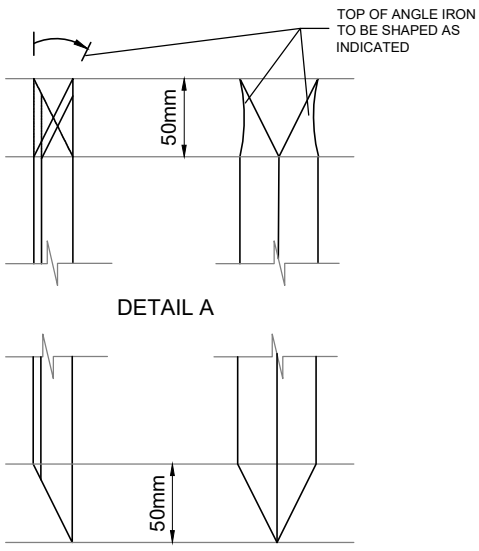
ELEVATION

SCALE 1:20

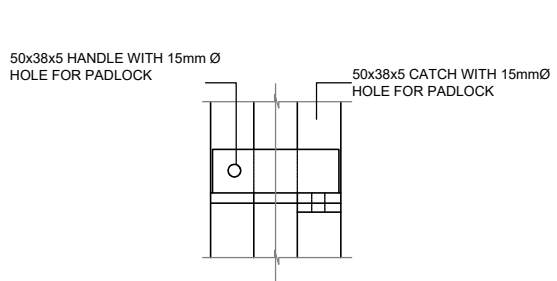


SECTION B-B POST

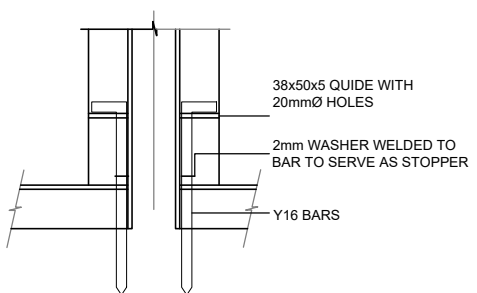
SCALE 1:20



DETAIL A
DETAIL B
GATE PALES



DETAIL C (FRONT ELEVATION)



DETAIL D (BACK ELEVATION)

NOTES:

1. GENERAL
 - 1.1 ALL MATERIAL AND WORKMANSHIP MUST COMPLY WITH THE REQUIREMENTS OF THE LATEST RELEVANT SANS SPECIFICATIONS.
 - 1.2 ALL DIMENSIONS ARE IN MILLIMETERS. (UNLESS OTHERWISE SPECIFIED)
 - 1.3 DO NOT SCALE FROM THESE DRAWINGS.
 - 1.4 ALL DIMENSIONS MUST BE CHECKED AND APPROVED ON SITE.
- 2.2 ALL EXCAVATIONS FOR BASES AND FOOTINGS MUST BE INSPECTED AND APPROVED IN WRITING BY THE ENGINEER BEFORE CONCRETE IS PLACED.
- 2.3 REINFORCEMENT AND FRAMEWORK MUST BE INSPECTED AND APPROVED IN WRITING BY THE ENGINEER BEFORE CONCRETE IS PLACED.
3. STEELWORK
 - 3.2 STRUCTURAL STEEL SHALL BE GRADE 300W UNLESS OTHERWISE INDICATED OR SPECIFIED.
 - 3.3 COLD FORMED SECTIONS SHALL BE MADE FROM COMMERCIAL QUALITY STEEL UNLESS OTHERWISE SPECIFIED.
 - 3.4 HOLDING DOWN BOLTS SHALL BE OF THE GRADE SPECIFIED ON THE DRAWINGS.
 - 3.5 PAINTING OF STRUCTURAL STEELWORK SHALL BE IN STRICT ACCORDANCE WITH THE REQUIREMENTS OF SECTION 806 OF THE STANDARD SPECIFICATIONS.

PRELIMINARY
NOT FOR CONSTRUCTION

AMENDMENTS				DESIGNED		CONSULTANT	CLIENT	PROJECT TITLE	SCALE	AS SHOWN	PAPER SIZE	A1	
ALPHABETICAL LETTERS (A,B,C...) - FOR INFORMATION ONLY, NUMERIC NUMBERS (0,1,2...) - FOR CONSTRUCTION						 Gauteng: Lumley House 177 Jan Smuts Avenue Parktown North, 2193 South Africa Tel: +27-11-425 2810 Fax: +27-11-425 4731 info@envitech.co.za	 Kwa-Zulu Natal: Unit B1 Meyrickton Park 2 Meyrickton Place Gillitts 3610 Tel: +27-31-023 0980 Fax: +27-11-604 3555 info@envitech.co.za	WYEBANK GARDEN REFUSE LANDFILL SITE SITE CLOSURE PHASE 1					
NO.	DATE	APPROVED	DESCRIPTION	DESIGN CHECKED	ENGINEER					JOB NUMBER	809-2023		
A	21-07-2025	BLJ	ISSUED FOR TENDER		DATE:								
				DRAWN	MM								
				DRAWING CHECKED	GF			CLIENT					
					DATE:								