

GENERAL TOLERANCES

ISO 14405-1 DIMENSIONAL TOLERANCING	ISO 13920-B F WELDMENTS
ISO 8015 TOLERANCING	EN 10243-F FORGING
ISO 2768-mK-E LINEAR DIMENSIONS, SYMMETRY	DIN 8935 COLD BENDING
ISO 9013-422 THERMAL CUTTING	DIN 8930-m STAMPING
ISO 8062 CASTING	

- REV. 9
DIMENSION (P) ALTERED
PD_PEL_KLP_DRW_23E
24-08-2017 S.W.S.
- REV. 8
DIMENSION ALTERED
PD_PEL_KLP_DRW_23E
2016-10-31 S.W.S.
- REV. 7
THREADED HOLE ADDED
PD_PEL_KLP_DRW_23E
2016-08-18 S.W.S.
- REV. 6
TOLERANCE REMOVED
FROM PLATE THICKNESS
PD_PEL_KLP_DRW_23E
2016-07-13 S.W.S.
- REV. 5
TOLERANCES ALTERED
PD_PEL_KLP_DRW_23E
2015-10-19 M.J.M.
- REV. 4
TOLERANCES ALTERED
PD_PEL_KLP_DRW_23E
2015-09-04 M.J.M.
- REV. 3
LETTERS ADDED FOR
SOP.
PD_PEL_KLP_DRW_23E
2015-08-11 M.J.M.
- REV. 2
MACHINING SKETCH
ADDED.
PD_PEL_KLP_DRW_23E
2015-06-23 M.N.N.
- REV. 1
DESIGN CHANGE
PD_PEL_KLP_DRW_23E
2015-05-18 M.R.

NOTE:
FOR CUTTING, REFER TO DRAWING
NO: CUT_25A0101

COPYRIGHT THIS DRAWING TOGETHER WITH THE COPYRIGHT IS THE PROPERTY OF TRANSNET THIS DRAWING OR ANY PART THEREOF IS NOT TO BE COPIED OR OTHERWISE REPRODUCED OR USED FOR MANUFACTURE OR ANY OTHER PURPOSE WITHOUT THE WRITTEN PERMISSION FROM CHIEF EXECUTIVE TRANSNET ENGINEERING	ASSEMBLY DRG No. 25A0100	DRAWN	M.J.M.
	CLASS 23E	CHECKED	M.N.N.
	TYPE ELECTRIC LOCOMOTIVE	APPROVED	B.E.D.
	CHIEF EXECUTIVE TRANSNET ENGINEERING	DATE	SCALE
A-2 PROJECTION	DOCUMENT REFERENCE No.	PD_PEL_KLP_DRW_23E	

KILNER PARK LOCOMOTIVES
**OUTER WEB
PIVOT TRANSOM**

AMENDMENTS

MASS	73.68 Kg
------	----------

MATERIAL

STEEL
SANS 50025 GR S355 J2+N
PLATE 16
1620 x 341

ITEM NO.

BT DRW. REV_B

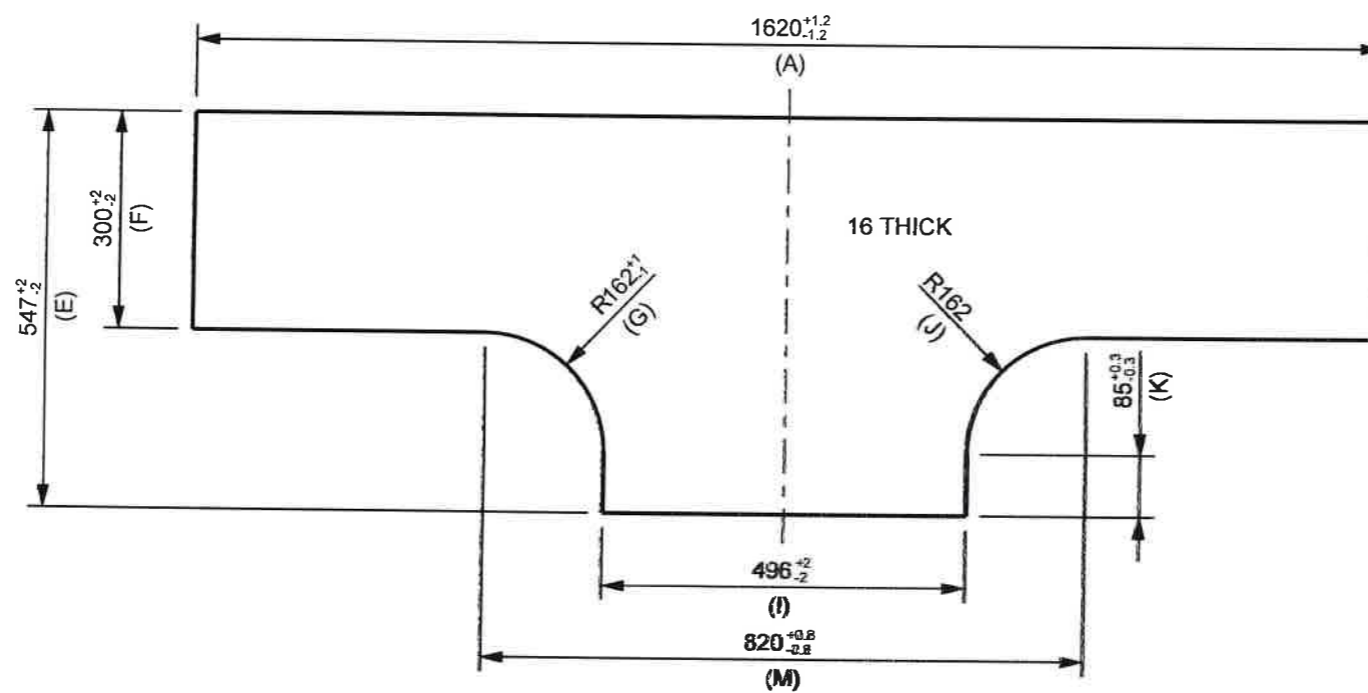
GROUP 4.1

FOR UNTOLERANCED DIMENSIONS SEE ISO 2768-1: DESIGNATION
FOR GENERAL TOLERANCE ON WELDED CONSTRUCTIONS SEE ISO 13920: CLASS

M

2D STATUS IN WORK

GENERAL TOLERANCES	
ISO 14405-1 DIMENSIONAL TOLERANCING	ISO 13920-B F WELDMENTS
ISO 8015 TOLERANCING	EN 10243-F FORGING
ISO 2768-mK-E LINEAR DIMENSIONS, SYMMETRY	DIN 6935 COLD BENDING
ISO 9013-422 THERMAL CUTTING	DIN 6930-m STAMPING
ISO 8062 CASTING	



REV_7
DIMENSION (E) ALTERED
PD_PEL_KLP_DRW_23E
2017-08-24 S.W.S.

REV_6
BT DRW. UPDATED
PD_PEL_KLP_DRW_23E
2016-09-16 S.W.S.

REV_5
DIMENSIONS ALTERED
PD_PEL_KLP_DRW_23E
2016-07-04 S.W.S.

REV_4
TOLERANCES ALTERED
PD_PEL_KLP_DRW_23E
2015-10-19 M.J.M.

REV_3
TOLERANCES ALTERED
PD_PEL_KLP_DRW_23E
2015-08-27 M.J.M.

REV_2
DESIGN CHANGE
BT DRW. REV_A
PD_PEL_KLP_DRW_23E
2015-05-18. M.R.

REV_1
CUTTING MARGINS ADDED
PD_PEL_KLP_DRW_23E
2015-05-05. M.N.N.

AMENDMENTS

MASS 77.84 Kg



PART EDGES ISO 13715

2024-07-

COPYRIGHT
THIS DRAWING TOGETHER WITH THE COPYRIGHT IS THE PROPERTY OF
TRANSNET
THIS DRAWING OR ANY PART THEREOF IS NOT TO BE COPIED OR OTHERWISE REPRODUCED OR USED FOR MANUFACTURE OR ANY OTHER PURPOSE WITHOUT THE WRITTEN PERMISSION FROM
CHIEF EXECUTIVE,
TRANSNET ENGINEERING

ASSEMBLY DRG No.	DRAWN	M.J.M.
	CHECKED	M.N.N.
CLASS 23E	APPROVED	B.E.D.
TYPE ELECTRIC LOCOMOTIVE	DATE	
	SCALE	1:10

KILNER PARK LOCOMOTIVES

OUTER WEB
PIVOT TRANSOM

MATERIAL

STEEL
SANS 50025 GRADE S355 J2+N
PLATE 16
1620 x 547

SHEET 1 OF 1

A-3 PROJECTION

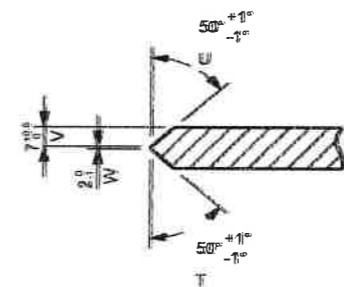
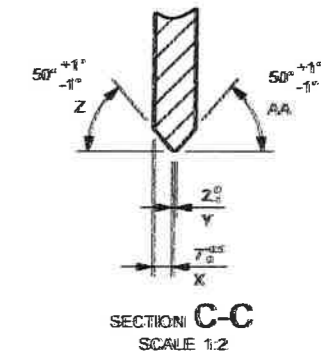
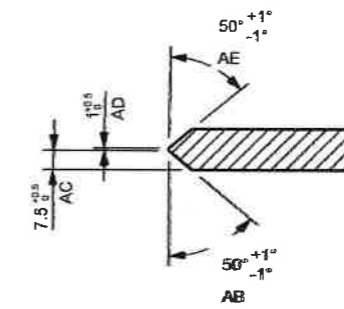
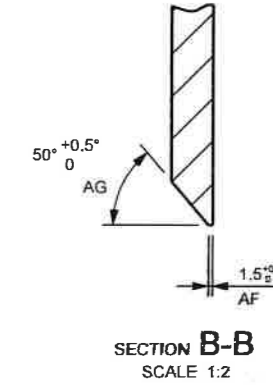
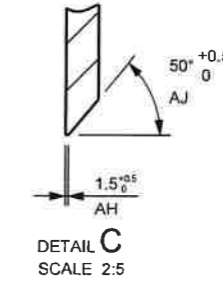
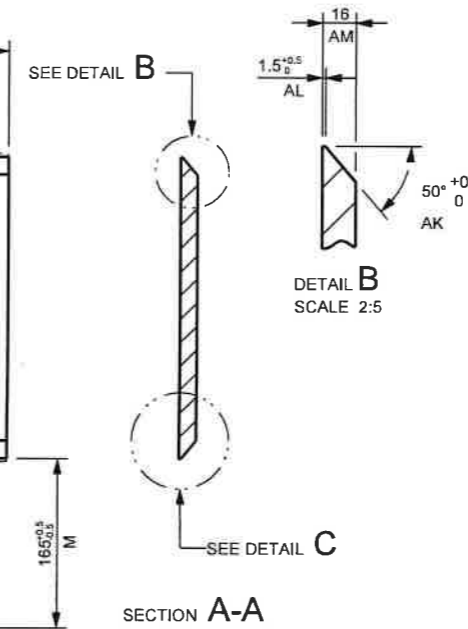
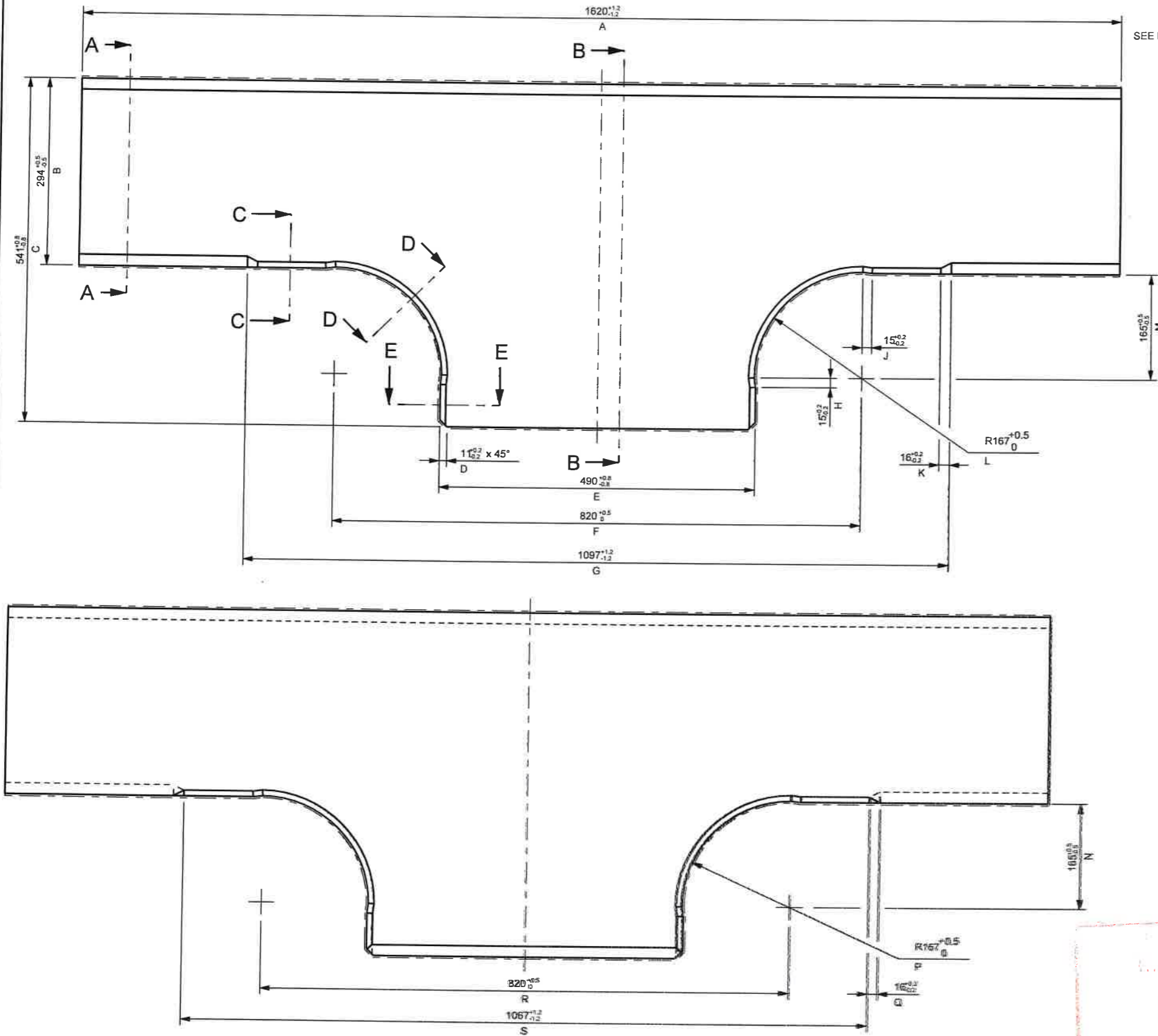
DOCUMENT REFERENCE No. PD_PEL_KLP_DRW_23E

TRANSNET ENGINEERING

No.

CUT 25A0101 REV. -7

GENERAL TOLERANCES	
ISO 14405-1 DIMENSIONAL TOLERANCING	ISO 13920-B F WELDEDMENTS
ISO 8015 TOLERANCING	EN 10243-F FORGING
ISO 2768-mK-E LINEAR DIMENSIONS, SYMMETRY	DIN 6935 COLD BENDING
ISO 9013-422 THERMAL CUTTING	DIN 6930-m STAMPING
ISO 8062 CASTING	



12.5 3.2



PART EDGES ISO 13715

REV 7 DIMENSION (C) ALTERED PD_PEL_KLP_DRW_23E 24-08-2017 S.W.S.
REV 6 TOLERANCE REMOVED FROM PLATE THICKNESS PD_PEL_KLP_DRW_23E 2016-07-11 S.W.S.
REV 5 BT DRW UPDATED PD_PEL_KLP_DRW_23E 2016-07-11 S.W.S.
REV 4 TOLERANCES ALTERED PD_PEL_KLP_DRW_23E 2015-10-19 M.J.M.
REV 3 TOLERANCES ALTERED PD_PEL_KLP_DRW_23E 2015-09-04 M.J.M.
REV 2 LETTERS ADDED FOR SDP. PD_PEL_KLP_DRW_23E 2015-08-11 M.J.M.
REV 1 MACHINING SKETCH ADDED. PD_PEL_KLP_DRW_23E 2015-06-23 M.N.N.

NOTE:
FOR CUTTING, REFER TO DRAWING
NO: CUT_25A0102

<p>COPYRIGHT THIS DRAWING TOGETHER WITH THE COPYRIGHT IS THE PROPERTY OF TRANSNET THIS DRAWING OR ANY PART THEREOF IS NOT TO BE COPIED OR OTHERWISE REPRODUCED OR USED FOR MANUFACTURE OR ANY OTHER PURPOSE WITHOUT THE WRITTEN PERMISSION FROM CHIEF EXECUTIVE, TRANSNET ENGINEERING</p>	ASSEMBLY DRG No. 25A0100	DRAWN	M.J.M.
	CLASS 23E	CHECKED	M.N.N.
	TYPE ELECTRIC LOCOMOTIVE	APPROVED	B.E.D.
		DATE	
	SCALE	1:5	
A-2 PROJECTION	DOCUMENT REFERENCE No.	PD_PEL_KLP_DRW_23E	

KILNER PARK		LOCOMOTIVES	
OUTER WEB PIVOT TRANSOM			
MATERIAL		STEEL SAMS 50025 GR S355 J2+M PLATE 16 1620 x 538	
SHEET 1 OF 1		No. MAC_25A0102 REV. -7	
TRANSNET ENGINEERING			

ITEM NO. _____

BT DRW. REV_0

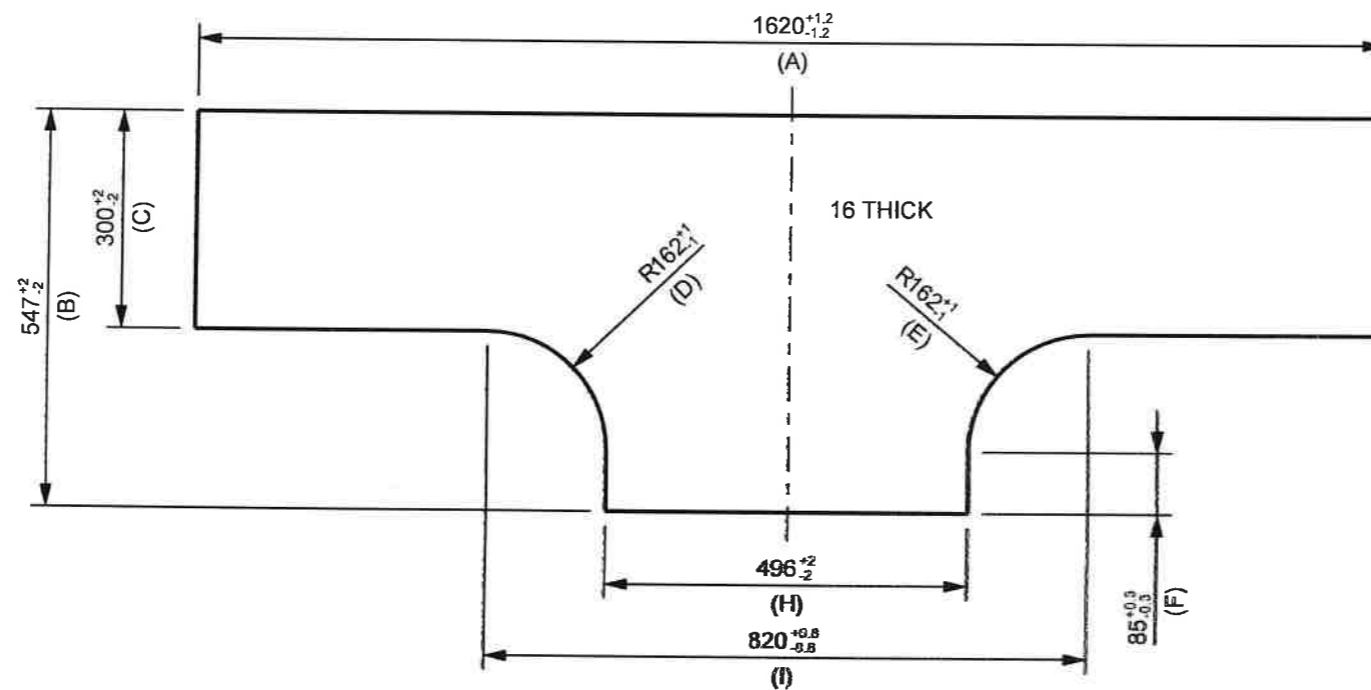
GROUP 4.2

FOR UNTOLERANCED DIMENSIONS SEE ISO 2768-1: DESIGNATION
 FOR GENERAL TOLERANCE ON WELDED CONSTRUCTIONS SEE ISO 13920: CLASS

M

2D STATUS IN WORK

GENERAL TOLERANCES	
ISO 14405-1 DIMENSIONAL TOLERANCING	ISO 13920-B F WELDEMENTS
ISO 8015 TOLERANCING	EN 10243-F FORGING
ISO 2768-mK-E LINEAR DIMENSIONS, SYMMETRY	DIN 6935 COLD BENDING
ISO 9013-422 THERMAL CUTTING	DIN 6930-m STAMPING
ISO 8062 CASTING	



REV_6
 DIMENSION (B) ALTERED
 PD_PEL_KLP_DRW_23E
 2017-08-24 S.W.S.

REV_5
 DIMENSIONS ALTERED
 PD_PEL_KLP_DRW_23E
 2016-07-04 S.W.S.

REV_4
 TOLERANCES ALTERED
 PD_PEL_KLP_DRW_23E
 2015-10-19 M.J.M.

REV_3
 TOLERANCES ALTERED
 PD_PEL_KLP_DRW_23E
 2015-08-27 M.J.M.

REV_2
 TOLERANCE HAS BEEN
 AMENDED
 PD_PEL_KLP_DRW_23E
 2015-05-18. M.R.

REV_1
 CUTTING MARGINS ADDED
 PD_PEL_KLP_DRW_23E
 2015-05-05. M.N.N.



PART EDGES ISO 13715

AMENDMENTS

MASS 77.84 Kg

COPYRIGHT
 THIS DRAWING TOGETHER WITH THE COPYRIGHT
 IS THE PROPERTY OF
TRANSNET
 THIS DRAWING OR ANY PART THEREOF IS NOT
 TO BE COPIED OR OTHERWISE REPRODUCED
 OR USED FOR MANUFACTURE OR ANY OTHER
 PURPOSE WITHOUT THE WRITTEN PERMISSION
 FROM
 CHIEF EXECUTIVE,
 TRANSNET ENGINEERING

ASSEMBLY DRG No.	DRAWN	M.J.M.
	CHECKED	M.N.N.
CLASS 23E	APPROVED	B.E.D.
TYPE ELECTRIC LOCOMOTIVE	DATE	
	SCALE	1:10

KILNER PARK LOCOMOTIVES

INNER WEB
PIVOT TRANSOM

MATERIAL

STEEL
 SANS 50025 GRADE S355 J2+N
 PLATE 16
 1620 x 547

SHEET 1 OF 1

A-3 PROJECTION

DOCUMENT REFERENCE No. PD_PEL_KLP_DRW_23E

TRANSNET ENGINEERING

No.

CUT_25A0102 REV. -6

ITEM NO.

BT DRW. REV_A

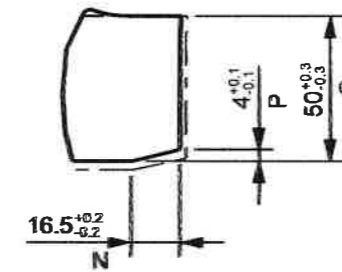
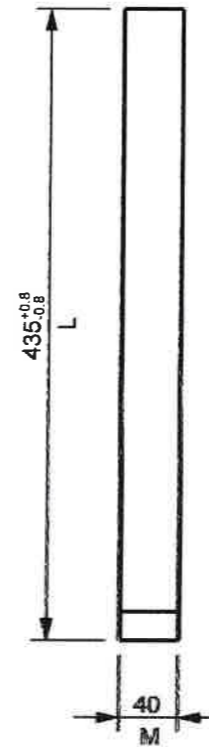
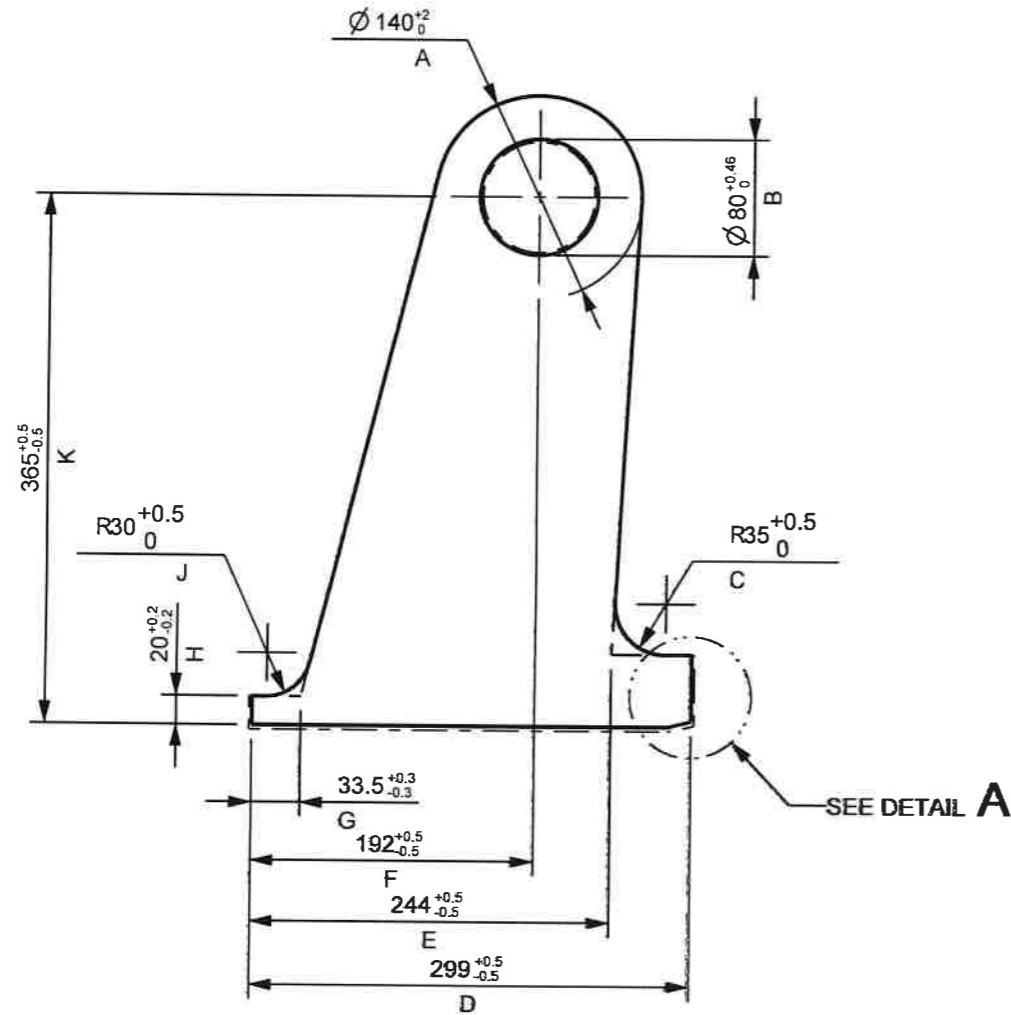
GROUP 4.3

FOR UNTOLERANCED DIMENSIONS SEE ISO 2768-1: DESIGNATION
FOR GENERAL TOLERANCE ON WELDED CONSTRUCTIONS SEE ISO 13920: CLASS

M
A E

2D STATUS IN WORK

GENERAL TOLERANCES	
ISO 14405-1 DIMENSIONAL TOLERANCING	ISO 13920-B F WELDEDMENTS
ISO 8015 TOLERANCING	EN 10243-F FORGING
ISO 2768-mK-E LINEAR DIMENSIONS, SYMMETRY	DIN 6935 COLD BENDING
ISO 9013-422 THERMAL CUTTING	DIN 6930-m STAMPING
ISO 8062 CASTING	ISO 286-2



DETAIL A
SCALE 2:5

12.5



PART EDGES ISO 13715

REV_6
TOLERANCE REMOVED
FROM PLATE THICKNESS
PD_PEL_KLP_DRW_23E
2016-07-13 S.W.S

REV_5
TOLERANCES ALTERED
PD_PEL_KLP_DRW_23E
2015-10-19 M.J.M.

REV_4
LETTERS ADDED FOR
SOP.
PD_PEL_KLP_DRW_23E.
2015-08-11 M.J.M.

REV_3
MACHINING SKETCH
ADDED.
PD_PEL_KLP_DRW_23E.
2015-06-23. M.N.N.

REV_2
TOLERANCE HAS BEEN
ALTERED.
PD_PEL_KLP_DRW_23E
2015-06-05. M.N.N.

REV_1
DESIGN CHANGE
PD_PEL_KLP_DRW_23E
2015-05-18. M.R.

AMENDMENTS

MASS 22.38 Kg

NOTE:

FOR CUTTING, REFER TO DRAWING NO: CUT_25A0108

COPYRIGHT THIS DRAWING TOGETHER WITH THE COPYRIGHT IS THE PROPERTY OF TRANSNET THIS DRAWING OR ANY PART THEREOF IS NOT TO BE COPIED OR OTHERWISE REPRODUCED OR USED FOR MANUFACTURE OR ANY OTHER PURPOSE WITHOUT THE WRITTEN PERMISSION FROM CHIEF EXECUTIVE, TRANSNET ENGINEERING	ASSEMBLY DRG No. 25A0100	DRAWN	M.J.M.	KILNER PARK: LOCOMOTIVES HOLDER PIVOT TRANSOM	MATERIAL STEEL SANS 50025 GR S355 J2+N PLATE 40 435 x 299
	CLASS 23E	CHECKED	M.N.N.		
	TYPE ELECTRIC LOCOMOTIVE	APPROVED	B.E.D.		
	SCALE 1:5	DATE			
A-3 PROJECTION	DOCUMENT REFERENCE No. PD_PEL_KLP_DRW_23E	SCALE	1:5	TRANSNET ENGINEERING	SHEET 1 OF 1
				No.	MAC 25A0108 REV. -6

ITEM NO.

BT DRW. REV_A

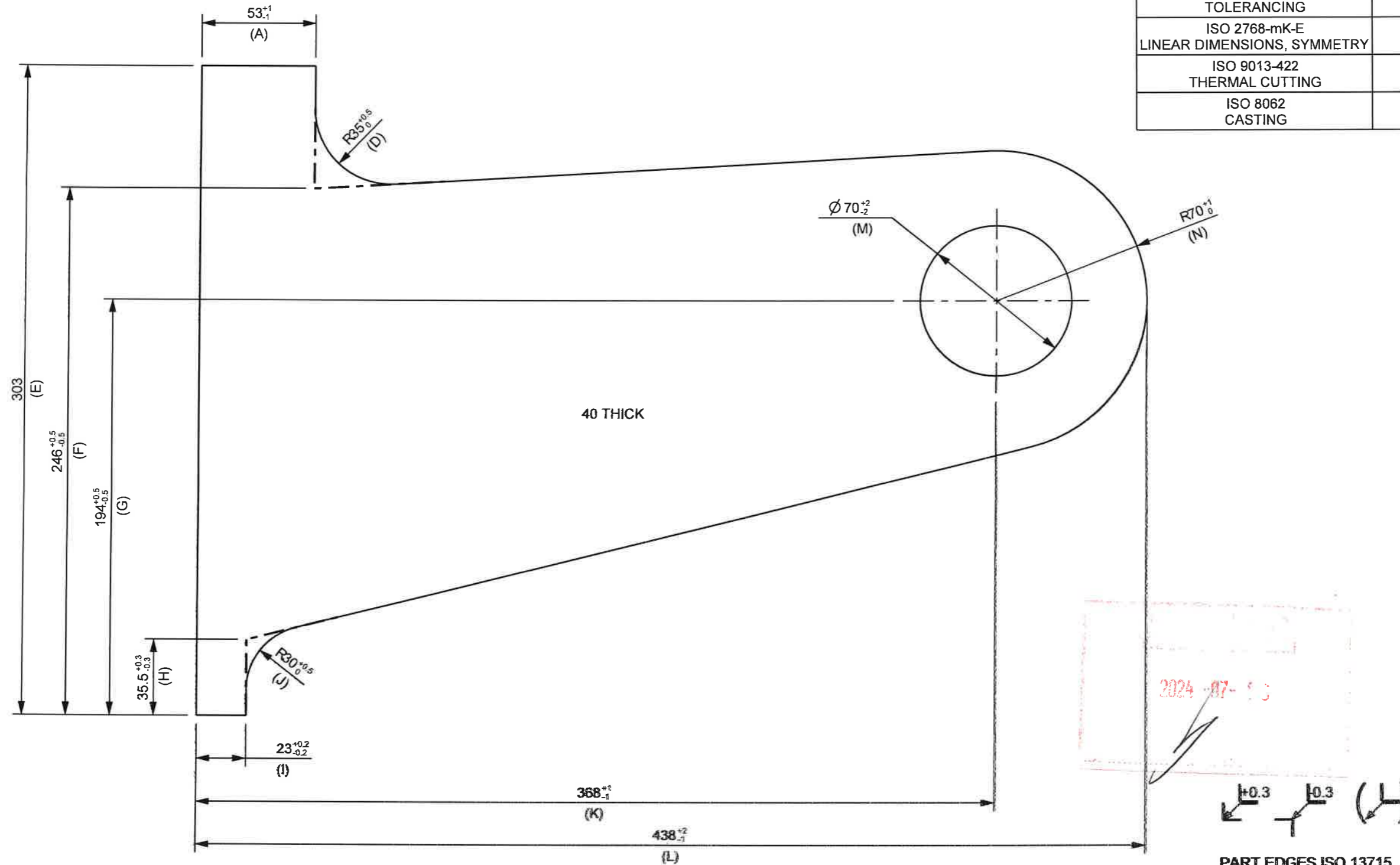
GROUP 4.3

FOR UNTOLERANCED DIMENSIONS SEE ISO 2768-1: DESIGNATION
FOR GENERAL TOLERANCE ON WELDED CONSTRUCTIONS SEE ISO 13920: CLASS

M
A E

2D STATUS IN WORK

GENERAL TOLERANCES	
ISO 14405-1 DIMENSIONAL TOLERANCING	ISO 13920-B F WELDMENTS
ISO 8015 TOLERANCING	EN 10243-F FORGING
ISO 2768-mK-E LINEAR DIMENSIONS, SYMMETRY	DIN 6935 COLD BENDING
ISO 9013-422 THERMAL CUTTING	DIN 6930-m STAMPING
ISO 8062 CASTING	



REV_5
DIMENSIONS ALTERED
PD_PEL_KLP_DRW_23E
2016-07-04 S.W.S.

REV_4
TOLERANCES ALTERED
PD_PEL_KLP_DRW_23E
2015-10-19 M.J.M.

REV_3
TOLERANCES ALTERED
PD_PEL_KLP_DRW_23E
2015-08-27 M.J.M.

REV_2
DESIGN CHANGE
PD_PEL_KLP_DRW_23E
2015-05-18. M.R.

REV_1
CUTTING MARGINS ADDED
PD_PEL_KLP_DRW_23E
2015-05-05. M.N.N.

AMENDMENTS
MASS 23.08 Kg

COPYRIGHT
THIS DRAWING TOGETHER WITH THE COPYRIGHT
IS THE PROPERTY OF
TRANSNET
THIS DRAWING OR ANY PART THEREOF IS NOT
TO BE COPIED OR OTHERWISE REPRODUCED
OR USED FOR MANUFACTURE OR ANY OTHER
PURPOSE WITHOUT THE WRITTEN PERMISSION
FROM
CHIEF EXECUTIVE,
TRANSNET ENGINEERING

ASSEMBLY DRG No.	DRAWN	M.J.M.
	CHECKED	M.N.N.
CLASS 23E	APPROVED	B.E.D.
TYPE ELECTRIC LOCOMOTIVE	DATE	
	SCALE	1:2

KILNER PARK LOCOMOTIVES
HOLDER
PIVOT TRANSOM
SHEET 1 OF 1

MATERIAL
STEEL
SANS 50025 GRADE S355 J2+N
PLATE 40
438 x 303

A-3 PROJECTION

DOCUMENT REFERENCE No. PD_PEL_KLP_DRW_23E

TRANSNET ENGINEERING

No. **CUT_25A0108** REV. -5

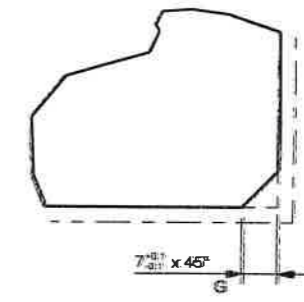
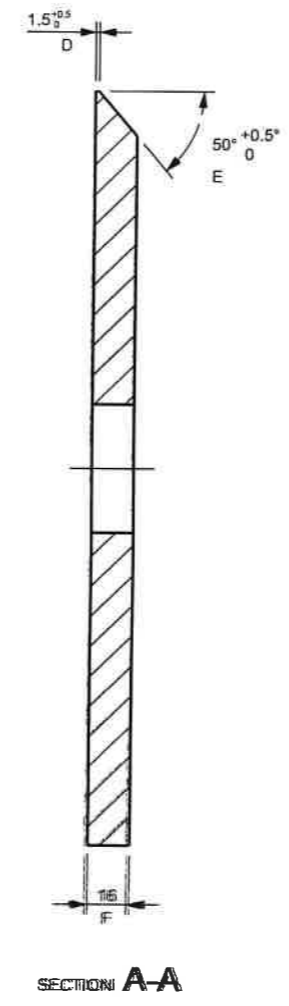
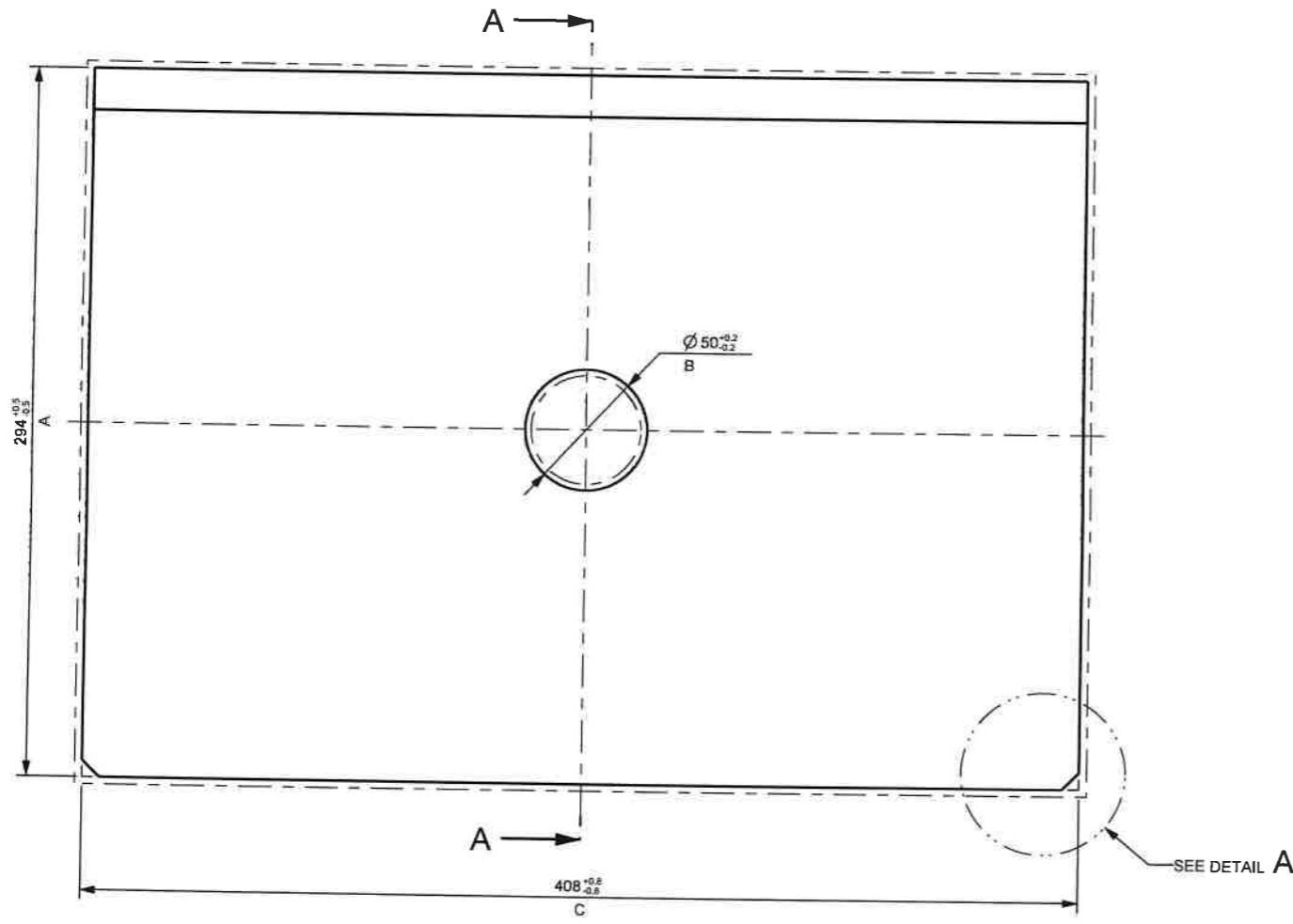
ITEM NO. _____
BT DRW. REV_A

FOR UNTOLERANCED DIMENSIONS SEE ISO 2768-1: DESIGNATION
FOR GENERAL TOLERANCE ON WELDED CONSTRUCTIONS SEE ISO 13920: CLASS

M
A E

2D STATUS		IN WORK
GENERAL TOLERANCES		
ISO 14405-1 DIMENSIONAL TOLERANCING	ISO 13920-B F WELDMENTS	
ISO 8015 TOLERANCING	EN 10243-F FORGING	
ISO 2768-mK-E LINEAR DIMENSIONS, SYMMETRY	DIN 6935 COLD BENDING	
ISO 9013-422 THERMAL CUTTING	DIN 6930-m STAMPING	
ISO 8062 CASTING		

GROUP 4.4



DETAIL A
SCALE 1:1

NOTE:
FOR CUTTING, REFER TO DRAWING NO: CUT_25A0110

12.5 / 3.2

±0.3 / ±0.3 (H)

PART EDGES ISO 13715

REV 6 TOLERANCE REMOVED FROM PLATE THICKNESS PD_PEL_KLP_DRW_23E 2015-07-13 S.W.S
REV 5 TOLERANCES ALTERED PD_PEL_KLP_DRW_23E 2015-10-10 M.J.M.
REV 4 TOLERANCES ALTERED PD_PEL_KLP_DRW_23E 2015-08-04 M.J.M.
REV 3 LETTERS ADDED FOR SOP. PD_PEL_KLP_DRW_23E 2015-08-11 M.J.M.
REV 2 MACHINING SKETCH ADDED. PD_PEL_KLP_DRW_23E 2015-06-22 M.N.N.
REV 1 DESIGN CHANGE PD_PEL_KLP_DRW_23E 2015-05-18 M.R.
AMENDMENTS
MASS: 14.41 Kg

<p>COPYRIGHT THIS DRAWING TOGETHER WITH THE COPYRIGHT IS THE PROPERTY OF TRANSNET THIS DRAWING OR ANY PART THEREOF IS NOT TO BE COPIED OR OTHERWISE REPRODUCED OR USED FOR MANUFACTURE OR ANY OTHER PURPOSE WITHOUT THE WRITTEN PERMISSION FROM CHIEF EXECUTIVE, TRANSNET ENGINEERING</p>	ASSEMBLY DRG No. 25A0100	DRAWN	M.J.M.	<p>KILNER PARK LOCOMOTIVES</p> <p>RIB PIVOT TRANSOM</p>	<p>MATERIAL STEEL SANS 50025 GR S355 J2+N PLATE 16 408 x 294</p>
	CLASS Z3E	CHECKED	M.J.M.		
	TYPE ELECTRIC LOCOMOTIVE	APPROVED	B.E.D.		
	SCALE 1:2	DATE			
A-2 PROJECTION	DOCUMENT REFERENCE No. PD_PEL_KLP_DRW_23E	TRANSNET ENGINEERING		No.	REV. -6

ITEM NO. _____

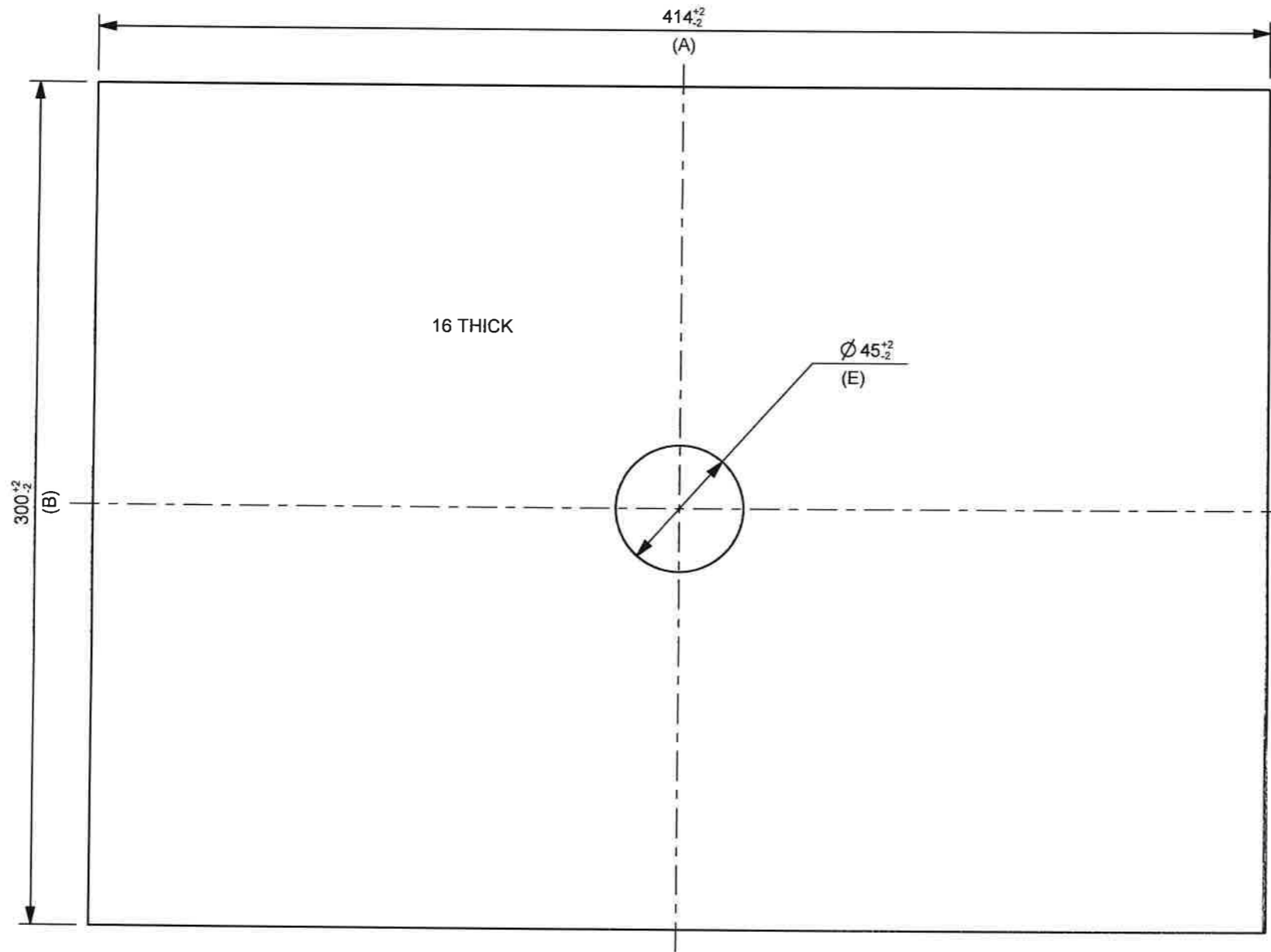
BT DRW. REV_A

FOR UNTOLERANCED DIMENSIONS SEE ISO 2768-1: DESIGNATION **M**
FOR GENERAL TOLERANCE ON WELDED CONSTRUCTIONS SEE ISO 13920: CLASS **A E**

2D STATUS **IN WORK**

GROUP 4.4

GENERAL TOLERANCES	
ISO 14405-1 DIMENSIONAL TOLERANCING	ISO 13920-B F WELDMENTS
ISO 8015 TOLERANCING	EN 10243-F FORGING
ISO 2768-mK-E LINEAR DIMENSIONS, SYMMETRY	DIN 6935 COLD BENDING
ISO 9013-422 THERMAL CUTTING	DIN 6930-m STAMPING
ISO 8062 CASTING	



REV_4 TOLERANCES ALTERED PD_PEL_KLP_DRW_23E 2015-10-19 M.J.M.
REV_3 TOLERANCES ALTERED PD_PEL_KLP_DRW_23E 2015-08-27 M.J.M.
REV_2 DESIGN CHANGE PD_PEL_KLP_DRW_23E 2015-05-18. M.R.
REV_1 CUTTING MARGINS ADDED PD_PEL_KLP_DRW_23E 2015-05-05. M.N.N.



PART EDGES ISO 13715

AMENDMENTS	
MASS	15.35 Kg

COPYRIGHT
THIS DRAWING TOGETHER WITH THE COPYRIGHT IS THE PROPERTY OF
TRANSNET
THIS DRAWING OR ANY PART THEREOF IS NOT TO BE COPIED OR OTHERWISE REPRODUCED OR USED FOR MANUFACTURE OR ANY OTHER PURPOSE WITHOUT THE WRITTEN PERMISSION FROM
CHIEF EXECUTIVE,
TRANSNET ENGINEERING

ASSEMBLY DRG No.	DRAWN	M.J.M.
	CHECKED	M.N.N.
CLASS 23E	APPROVED	B.E.D.
TYPE ELECTRIC LOCOMOTIVE	DATE	
	SCALE	1:2
DOCUMENT REFERENCE No.	PD_PEL_KLP_DRW_23E	

KILNER PARK LOCOMOTIVES

RIB
PIVOT TRANSOM

MATERIAL

STEEL
SANS 50025 GRADE S355 J2+N
PLATE 16
414 x 300

SHEET 1 OF 1

A-3 PROJECTION

TRANSNET ENGINEERING

No.

CUT 25A0110 REV. -4

ITEM NO. _____

BT DRW. REV_B

GROUP 4.5

FOR UNTOLERANCED DIMENSIONS SEE ISO 2768-1: DESIGNATION
 FOR GENERAL TOLERANCE ON WELDED CONSTRUCTIONS SEE ISO 13920: CLASS

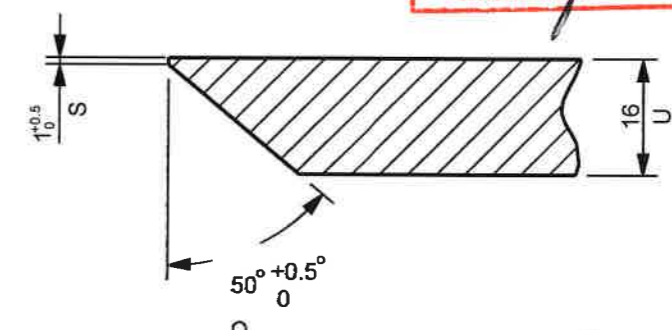
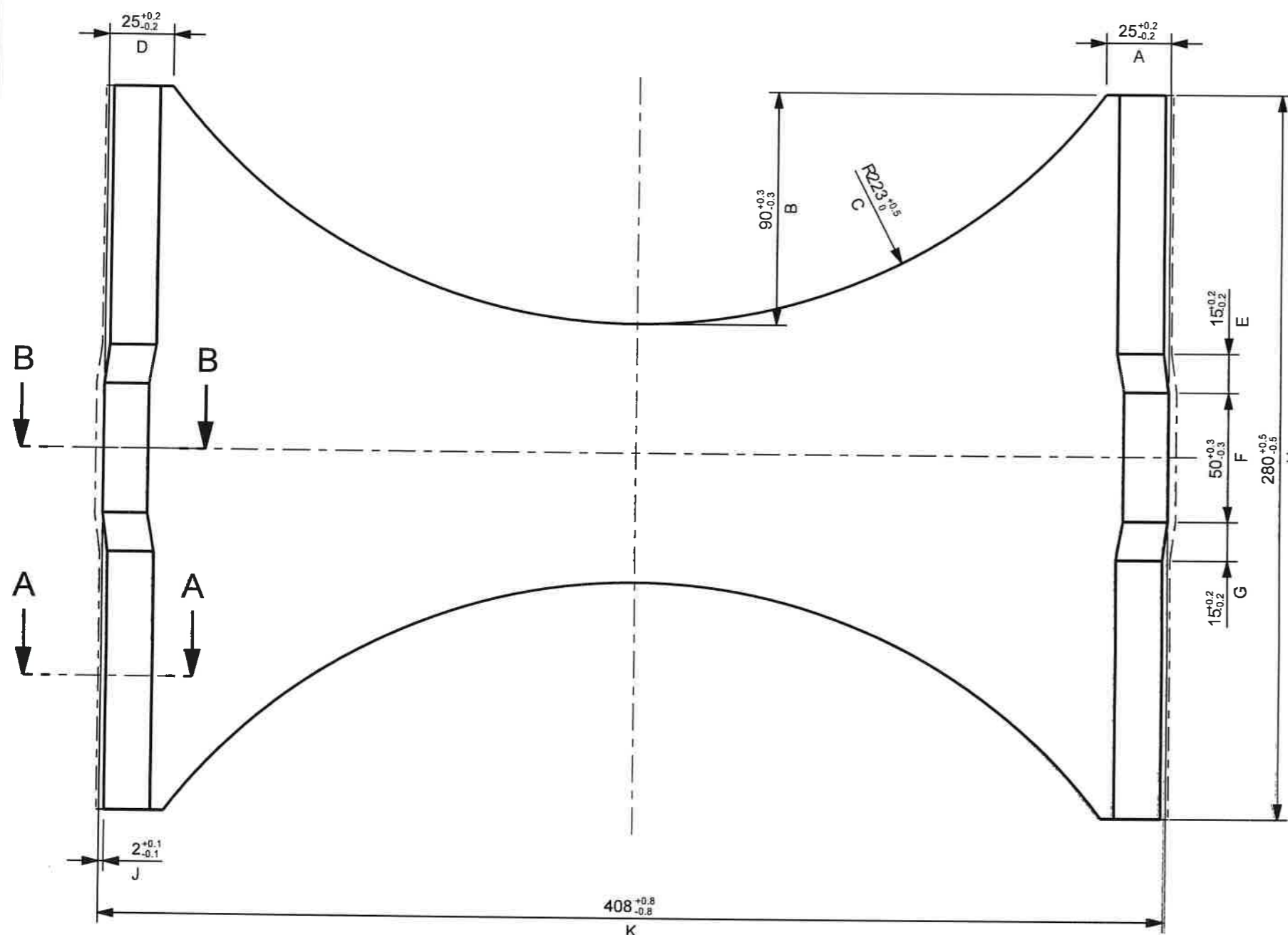
M
A E

2D STATUS IN WORK

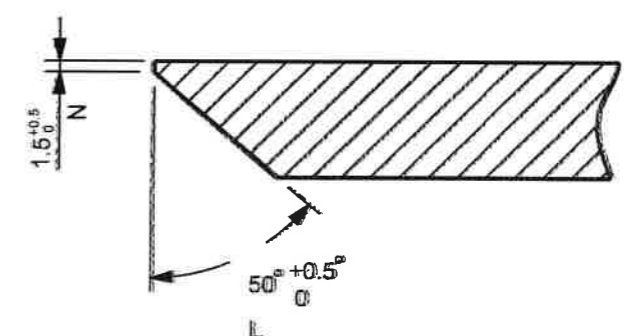
GENERAL TOLERANCES	
ISO 14405-1 DIMENSIONAL TOLERANCING	ISO 13920-B F WELDMENTS
ISO 8015 TOLERANCING	EN 10243-F FORGING
ISO 2768-mK-E LINEAR DIMENSIONS, SYMMETRY	DIN 6935 COLD BENDING
ISO 9013-422 THERMAL CUTTING	DIN 6930-m STAMPING
ISO 8062 CASTING	

2024-07-23

ID: _____ NAME: _____



SECTION A-A
SCALE 1:1



SECTION B-B
SCALE 1:1

REV_5
TOLERANCES ALTERED
PD_PEL_KLP_DRW_23E
2015-10-19 M.J.M.

REV_4
TOLERANCES ALTERED
PD_PEL_KLP_DRW_23E
2015-09-04 M.J.M.

REV_3
LETTERS ADDED FOR
SOP.
PD_PEL_KLP_DRW_23E.
2015-08-11 M.J.M.

REV_2
MACHINING SKETCH
ADDED.
PD_PEL_KLP_DRW_23E.
2015-06-23. M.N.N.

REV_1
DESIGN CHANGE
PD_PEL_KLP_DRW_23E
2015-05-18. M.L.R.

AMENDMENTS

MASS 8.00 Kg

NOTE:
FOR CUTTING, REFER TO DRAWING NO: CUT_25A0111

12.5



PART EDGES ISO 13715

COPYRIGHT THIS DRAWING TOGETHER WITH THE COPYRIGHT IS THE PROPERTY OF TRANSNET THIS DRAWING OR ANY PART THEREOF IS NOT TO BE COPIED OR OTHERWISE REPRODUCED OR USED FOR MANUFACTURE OR ANY OTHER PURPOSE WITHOUT THE WRITTEN PERMISSION FROM CHIEF EXECUTIVE, TRANSNET ENGINEERING	ASSEMBLY DRG No. 25A0100	DRAWN	M.J.M.	KILNER PARK LOCOMOTIVES RIB PIVOT TRANSOM	MATERIAL STEEL SANS 50025 GR S355 J2+N PLATE 16 408 x 280
	CLASS 23E	CHECKED	M.N.N.		
	TYPE ELECTRIC LOCOMOTIVE	APPROVED	B.E.D.		
	SCALE 1:2	DATE			
	DOCUMENT REFERENCE No. PD_PEL_KLP_DRW_23E	SCALE	1:2	TRANSNET ENGINEERING No.	SHEET 1 OF 1 MAC 25A0111 REV. -5

ITEM NO.

BT DRW. REV_B

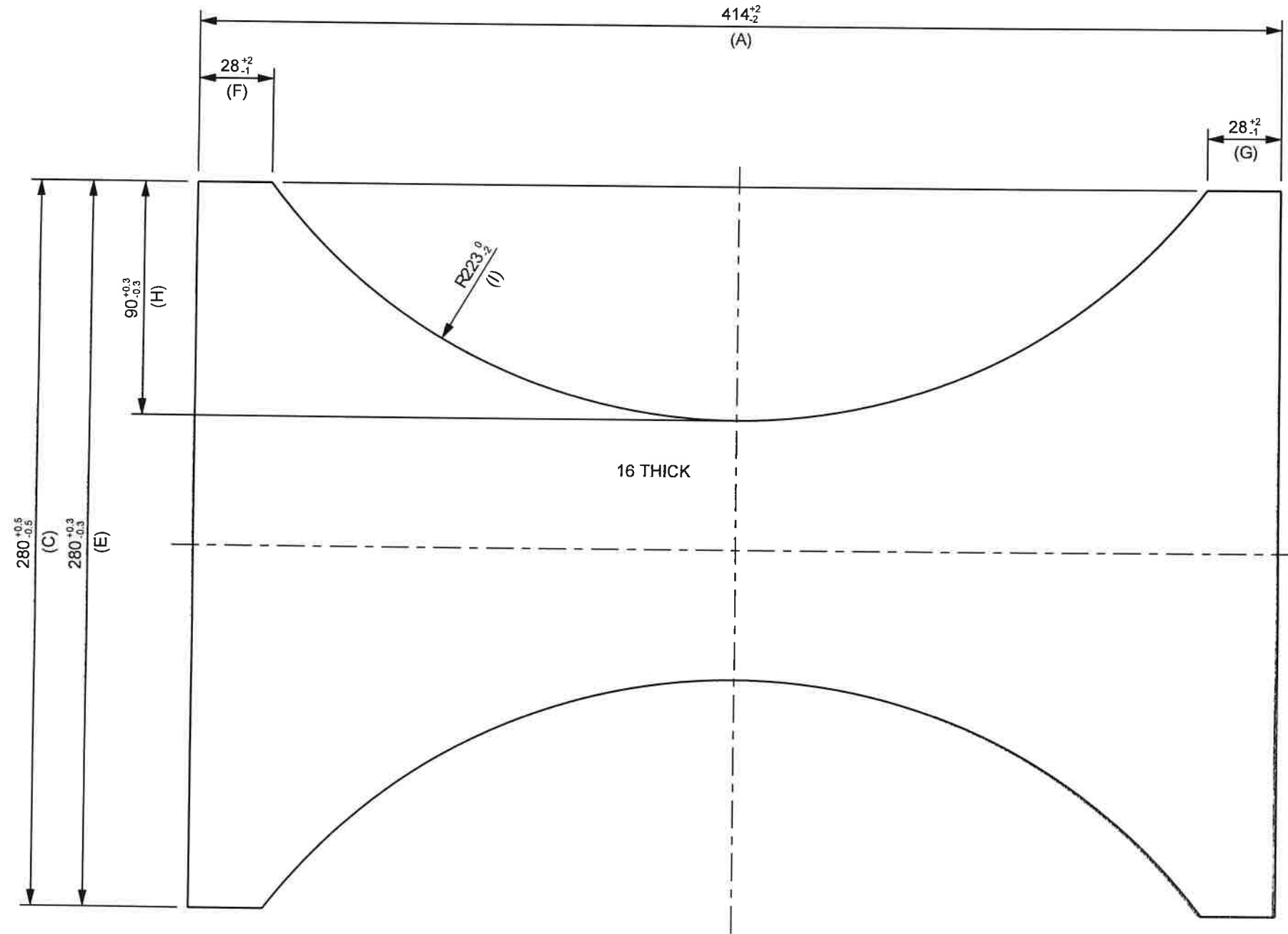
GROUP 4.5

FOR UNTOLERANCED DIMENSIONS SEE ISO 2768-1: DESIGNATION
 FOR GENERAL TOLERANCE ON WELDED CONSTRUCTIONS SEE ISO 13920: CLASS

M
A E

2D STATUS IN WORK

GENERAL TOLERANCES	
ISO 14405-1 DIMENSIONAL TOLERANCING	ISO 13920-B F WELDEDMENTS
ISO 8015 TOLERANCING	EN 10243-F FORGING
ISO 2768-mK-E LINEAR DIMENSIONS, SYMMETRY	DIN 6935 COLD BENDING
ISO 9013-422 THERMAL CUTTING	DIN 6930-m STAMPING
ISO 8062 CASTING	



REV 5
BT DRW UPDATED
PD_PEL_KLP_DRW_23E
2016-07-04 S.W.S.

REV 4
TOLERANCES ALTERED
PD_PEL_KLP_DRW_23E
2015-10-19 M.J.M.

REV 3
TOLERANCES ALTERED
PD_PEL_KLP_DRW_23E
2015-08-27 M.J.M.

REV 2
DESIGN CHANGE
PD_PEL_KLP_DRW_23E
2015-05-18. M.R.

REV 1
CUTTING MARGINS ADDED
PD_PEL_KLP_DRW_23E
2015-05-05. M.L.N.



PART EDGES ISO 13715

AMENDMENTS
MASS 8.90 Kg

COPYRIGHT
 THIS DRAWING TOGETHER WITH THE COPYRIGHT IS THE PROPERTY OF
TRANSNET
 THIS DRAWING OR ANY PART THEREOF IS NOT TO BE COPIED OR OTHERWISE REPRODUCED OR USED FOR MANUFACTURE OR ANY OTHER PURPOSE WITHOUT THE WRITTEN PERMISSION FROM
 CHIEF EXECUTIVE,
 TRANSNET ENGINEERING

ASSEMBLY DRG No.	DRAWN	M.J.M.
	CHECKED	M.N.N.
CLASS 23E	APPROVED	B.E.D.
TYPE ELECTRIC LOCOMOTIVE	DATE	
	SCALE	1:2

KILNER PARK LOCOMOTIVES
RIB
 PIVOT TRANSOM
 SHEET 1 OF 1

MATERIAL
 STEEL
 SANS 50025 GRADE S355 J2+M
 PLATE 16
 414 x 280

A-3 PROJECTION

DOCUMENT REFERENCE No. PD_PEL_KLP_DRW_23E

TRANSNET ENGINEERING

No. **CUT 25A0111** REV. -5

ITEM NO. _____

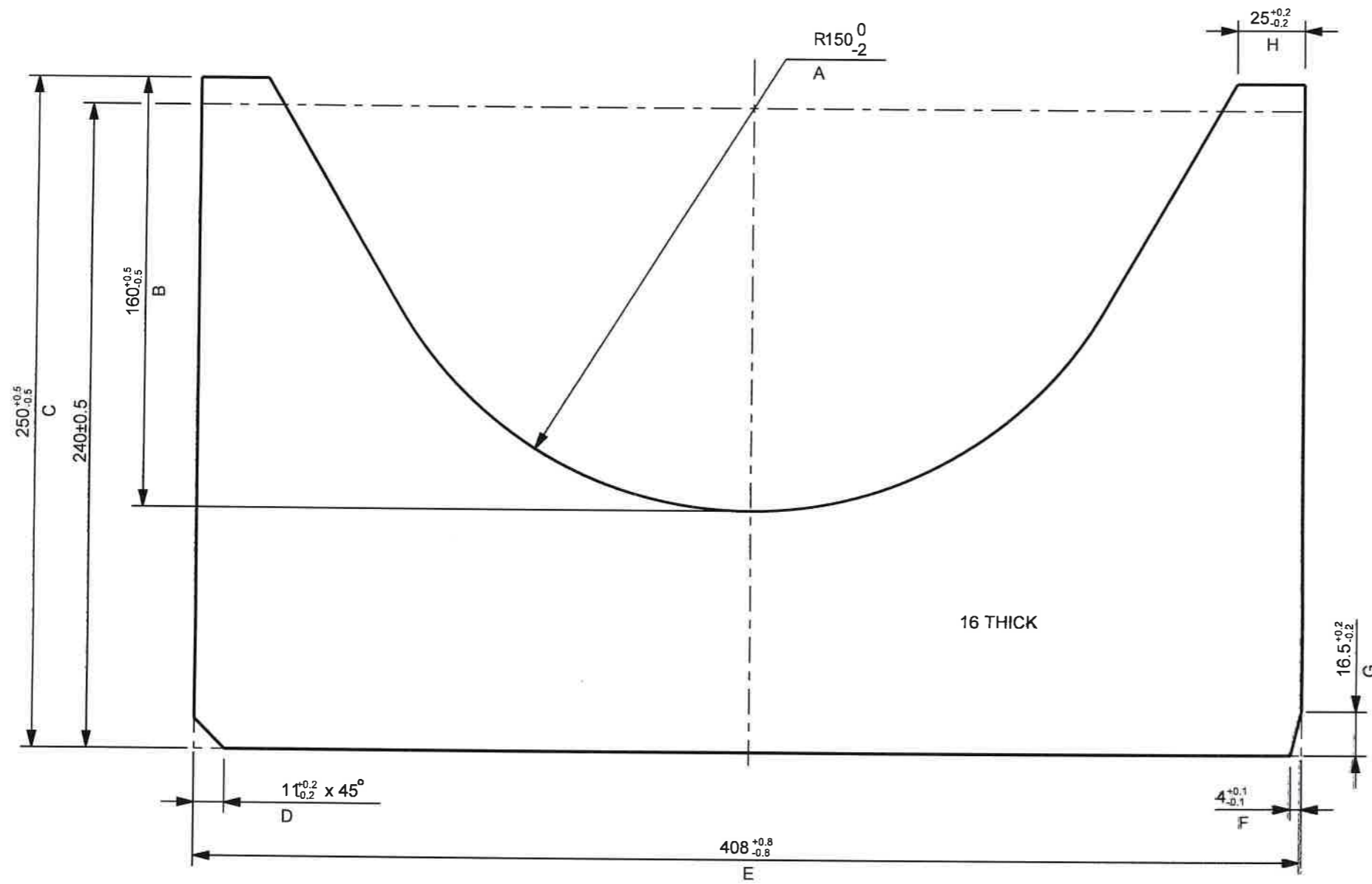
BT DRW. REV_A

FOR UNTOLERANCED DIMENSIONS SEE ISO 2768-1: DESIGNATION
 FOR GENERAL TOLERANCE ON WELDED CONSTRUCTIONS SEE ISO 13920: CLASS

M
A E

2D STATUS IN WORK

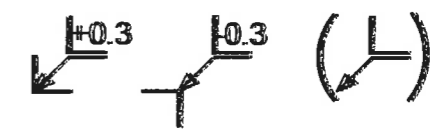
GROUP 4.6



GENERAL TOLERANCES	
ISO 14405-1 DIMENSIONAL TOLERANCING	ISO 13920-B F WELDMENTS
ISO 8015 TOLERANCING	EN 10243-F FORGING
ISO 2768-mK-E LINEAR DIMENSIONS, SYMMETRY	DIN 6935 COLD BENDING
ISO 9013-422 THERMAL CUTTING	DIN 6930-m STAMPING
ISO 8062 CASTING	

CONTROLLED
 TRANSNET DURBAN
 2024 -07- 23
 ID: NAME:

NOTE:
 FOR CUTTING, REFER TO DRAWING NO: CUT_25A0112



PART EDGES ISO 13715

- REV_5
TOLERANCES ALTERED
PD_PEL_KLP_DRW_23E
2015-10-19 M.J.M.
- REV_4
MACHINING SKETCH
REMOVED.
PD_PEL_KLP_DRW_23E
2015-09-21 M.J.M.
- REV_3
LETTERS ADDED FOR
SOP.
PD_PEL_KLP_DRW_23E.
2015-08-11 M.J.M.
- REV_2
MACHINING SKETCH
ADDED.
PD_PEL_KLP_DRW_23E.
2015-06-23. M.N.N.
- REV_1
DESIGN CHANGE
PD_PEL_KLP_DRW_23E
2015-05-18. M.R.

AMENDMENTS	
MASS	7.77 Kg

COPYRIGHT THIS DRAWING TOGETHER WITH THE COPYRIGHT IS THE PROPERTY OF TRANSNET THIS DRAWING OR ANY PART THEREOF IS NOT TO BE COPIED OR OTHERWISE REPRODUCED OR USED FOR MANUFACTURE OR ANY OTHER PURPOSE WITHOUT THE WRITTEN PERMISSION FROM CHIEF EXECUTIVE, TRANSNET ENGINEERING	ASSEMBLY DRG No. 25A0100	DRAWN	M.J.M.	KILNER PARK LOCOMOTIVES RIB PIVOT TRANSOM	MATERIAL STEEL SANS 50025 GR S355 J2+M PLATE 16 408 x 250
		CHECKED	M.N.N.		
	CLASS 23E	APPROVED	B.E.D.		
	TYPE ELECTRIC LOCOMOTIVE	DATE			
	SCALE	1:2		SHEET 1 OF 1	
A-3	PROJECTION	DOCUMENT REFERENCE No.	PD_PEL_KLP_DRW_23E	TRANSNET ENGINEERING	No. MAC 25A0112 REV. -5

ITEM NO. _____

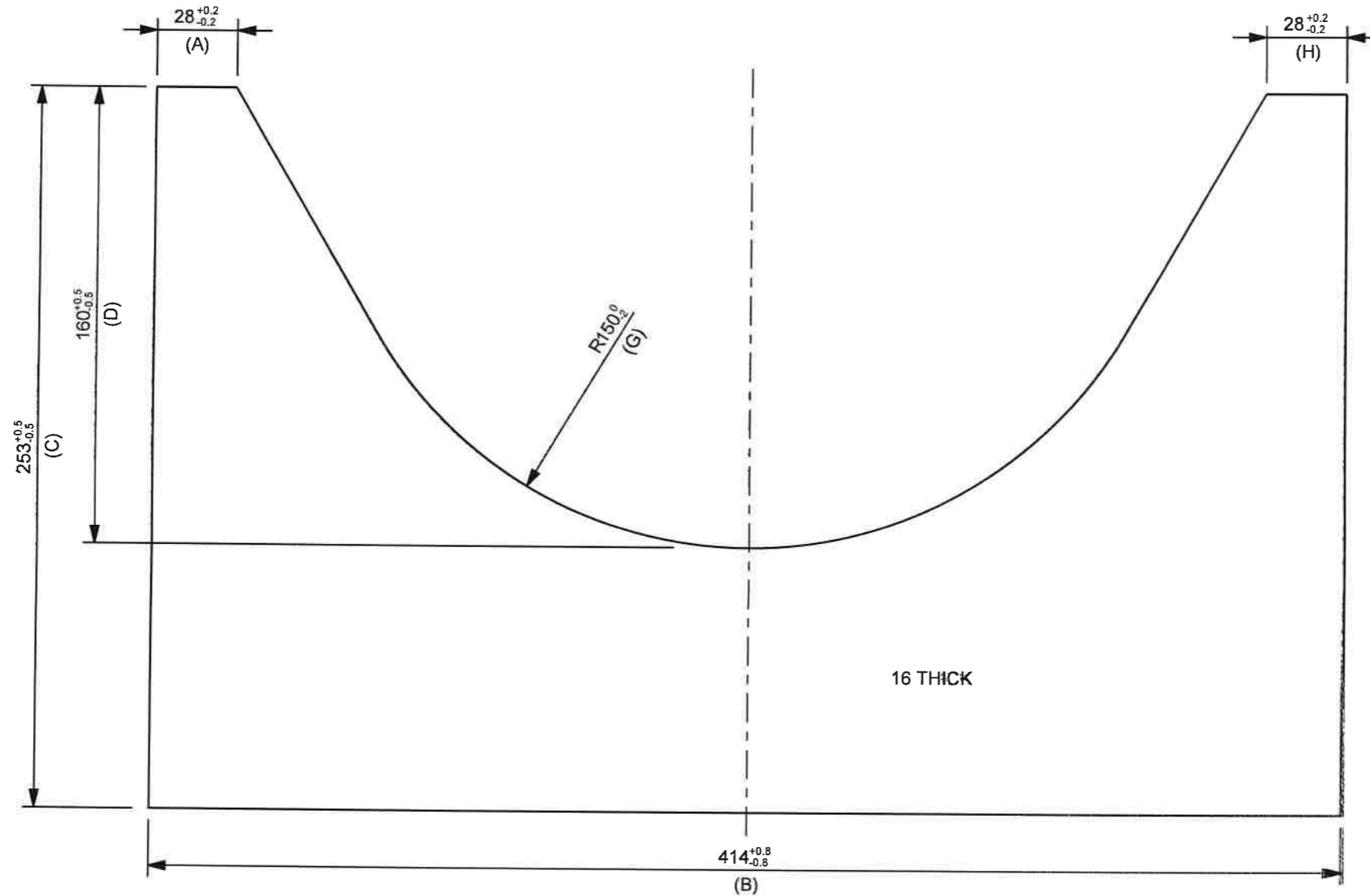
BT DRW. REV_A

FOR UNTOLERANCED DIMENSIONS SEE ISO 2768-1: DESIGNATION **M**
 FOR GENERAL TOLERANCE ON WELDED CONSTRUCTIONS SEE ISO 13920: CLASS **A E**

2D STATUS **IN WORK**

GROUP 4.6

GENERAL TOLERANCES	
ISO 14405-1 DIMENSIONAL TOLERANCING	ISO 13920-B F WELDEMENTS
ISO 8015 TOLERANCING	EN 10243-F FORGING
ISO 2768-mK-E LINEAR DIMENSIONS, SYMMETRY	DIN 6935 COLD BENDING
ISO 9013-422 THERMAL CUTTING	DIN 6930-m STAMPING
ISO 8062 CASTING	



2024-07-23
 TRANSNET DURBAN
 10:

- REV 5
TOLERANCES ALTERED
PD_PEL_KLP_DRW_23E
2017-10-19 M.J.M.
- REV 4
DIMENSIONS ALTERED.
PD_PEL_KLP_DRW_23E
2015-09-21 M.J.M.
- REV 3
TOLERANCES ALTERED
PD_PEL_KLP_DRW_23E
2015-08-27 M.J.M.
- REV 2
DESIGN CHANGE
PD_PEL_KLP_DRW_23E
2015-05-18. M.L.R.
- REV 1
CUTTING MARGINS ADDED
PD_PEL_KLP_DRW_23E
2015-05-05. M.L.N.L.



PART EDGES ISO 13715

AMENDMENTS	
MASS	8.12 Kg

COPYRIGHT
 THIS DRAWING TOGETHER WITH THE COPYRIGHT
 IS THE PROPERTY OF
TRANSNET
 THIS DRAWING OR ANY PART THEREOF IS NOT
 TO BE COPIED OR OTHERWISE REPRODUCED
 OR USED FOR MANUFACTURE OR ANY OTHER
 PURPOSE WITHOUT THE WRITTEN PERMISSION
 FROM
 CHIEF EXECUTIVE,
 TRANSNET ENGINEERING

ASSEMBLY DRG No.	DRAWN	M.J.M.
	CHECKED	M.N.N.
CLASS 23E	APPROVED	B.E.D.
TYPE ELECTRIC LOCOMOTIVE	DATE	
	SCALE	1:2
DOCUMENT REFERENCE No.	PD_PEL_KLP_DRW_23E	

KILNER PARK LOCOMOTIVES

RIB

PIVOT TRANSOM

SHEET 1 OF 1

MATERIAL

STEEL
 SANS 50025 GRADE S355 J2+N
 PLATE 16
 414 x 253

A-3 PROJECTION

TRANSNET ENGINEERING

No. **CUT 25A0112** REV. **-5**

ITEM NO.
 BT DRW. REV_A

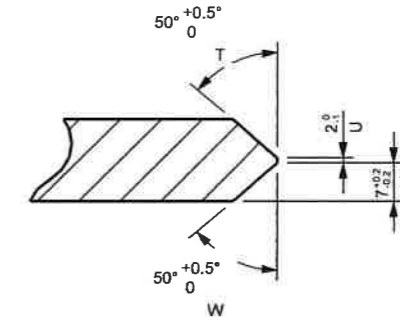
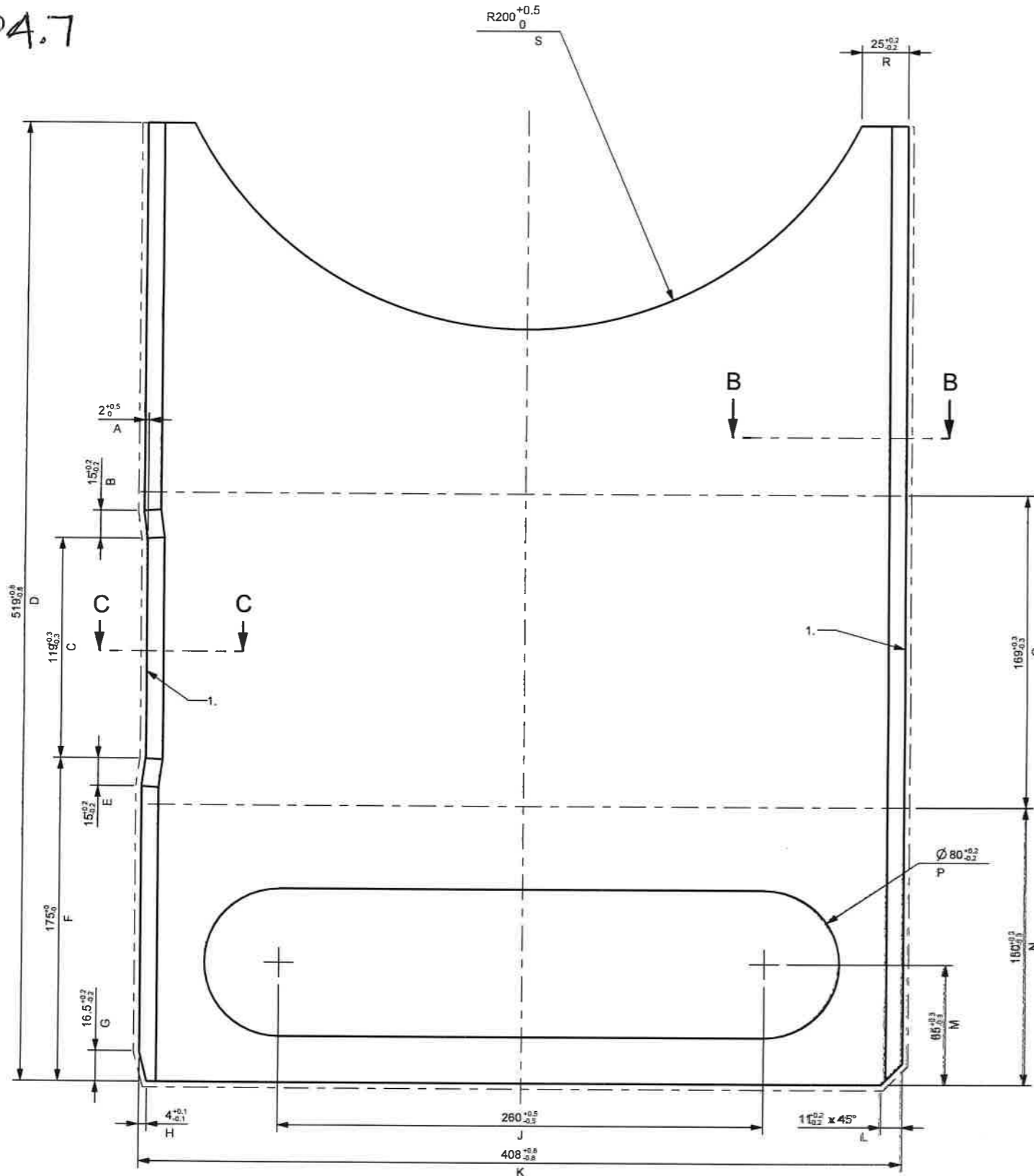
FOR UNTOLERANCED DIMENSIONS SEE ISO 2768-1: DESIGNATION
 FOR GENERAL TOLERANCE ON WELDED CONSTRUCTIONS SEE ISO 13920: CLASS

M
A E

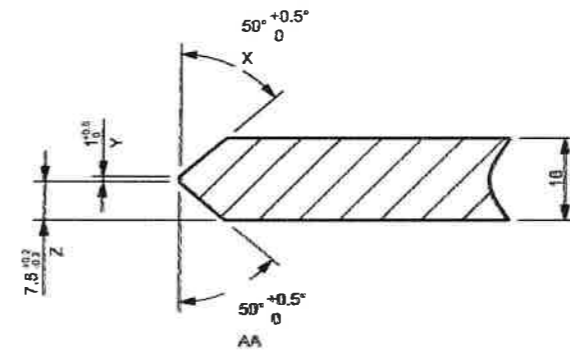
2D STATUS IN WORK

GROUP 4.7

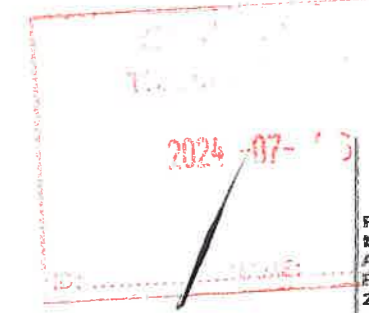
GENERAL TOLERANCES	
ISO 14405-1 DIMENSIONAL TOLERANCING	ISO 13920-B F WELDMENTS
ISO 8015 TOLERANCING	EN 10243-F FORGING
ISO 2768-mK-E LINEAR DIMENSIONS, SYMMETRY	DIN 6935 COLD BENDING
ISO 9013-422 THERMAL CUTTING	DIN 6930-m STAMPING
ISO 8062 CASTING	



SECTION B-B
SCALE 1:1



SECTION C-C
SCALE 1:1



REV 6
MATERIAL GRADE
AMENDED
PD_PEL_KLP_DRW_23E
2016-04-05 M.P.T.

REV 5
TOLERANCES ALTERED
PD_PEL_KLP_DRW_23E
2015-10-19 M.J.M.

REV 4
TOLERANCES ALTERED
PD_PEL_KLP_DRW_23E
2015-09-04 M.J.M.

REV 3
LETTERS ADDED FOR
SOP.
PD_PEL_KLP_DRW_23E
2015-08-11 M.J.M.

REV 2
MACHINING SKETCH
ADDED.
PD_PEL_KLP_DRW_23E
2015-06-23 M.N.N.

REV 1
DESIGN CHANGE
PD_PEL_KLP_DRW_23E
2015-05-18 M.R.

AMENDMENTS

MASS 19.20 Kg

NOTE:

1. THE HEAT AFFECTING ZONES IN THE BENDING AREAS HAVE TO BE REMOVED BY GRINDING RESPECTIVELY MACHINING BEFORE BENDING.
2. FOR CUTTING, REFER TO DRAWING NO: CUT_25A0113



PART EDGES ISO 13715

COPYRIGHT
THIS DRAWING TOGETHER WITH THE COPYRIGHT
IS THE PROPERTY OF
TRANSNET
THIS DRAWING OR ANY PART THEREOF IS NOT
TO BE COPIED OR OTHERWISE REPRODUCED
OR USED FOR MANUFACTURE OR ANY OTHER
PURPOSE WITHOUT THE WRITTEN PERMISSION
FROM
CHIEF EXECUTIVE,
TRANSNET ENGINEERING

ASSEMBLY DRG No. 25A0100	DRAWN	M.J.M.
	CHECKED	M.N.N.
CLASS 23E	APPROVED	B.E.D.
TYPE ELECTRIC LOCOMOTIVE	DATE	
	SCALE	1:2

KILNER PARK LOCOMOTIVES

RIB
PIVOT TRANSOM

MATERIAL

STEEL
SANS 50025 GRADE S355 J2C+N
PLATE 16
408 x 519

SHEET 1 OF 1

A-2 PROJECTION

DOCUMENT REFERENCE No.

PD_PEL_KLP_DRW_23E

TRANSNET ENGINEERING

No.

MAC 25A0113

REV. -6

ITEM NO.

BT DRW. REV_A

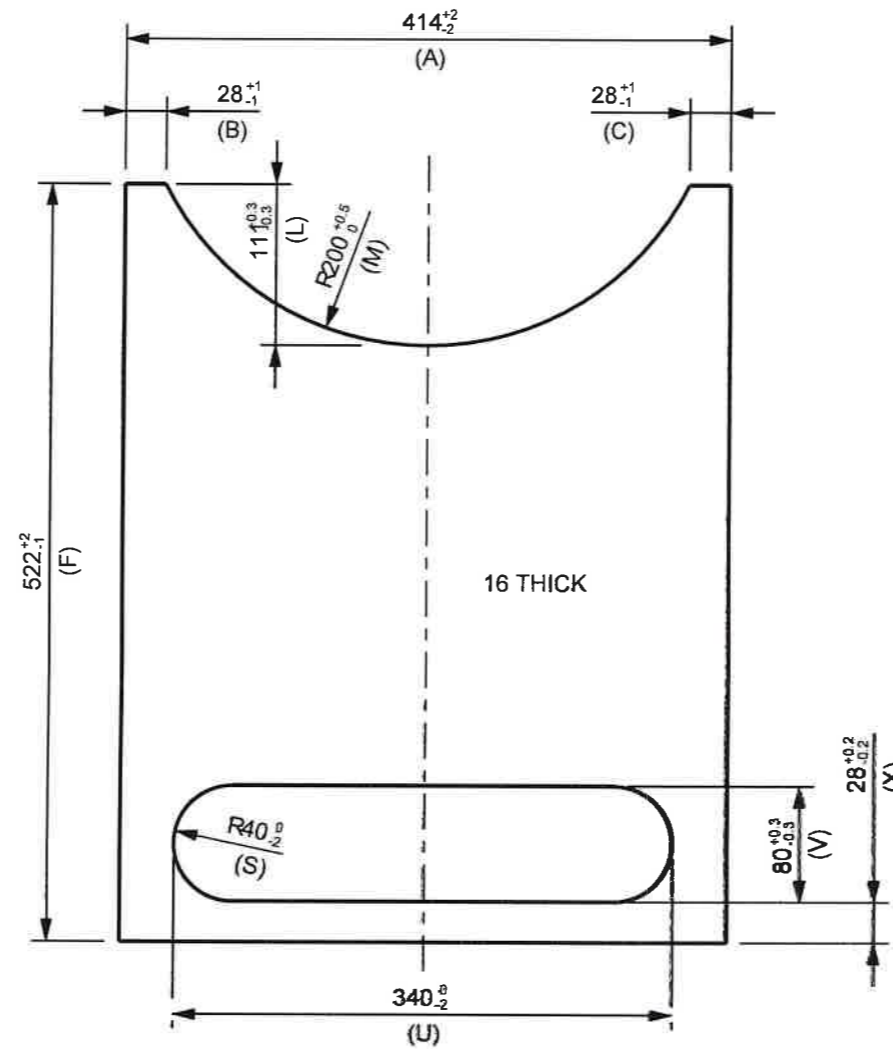
GROUP 4.7

FOR UNTOLERANCED DIMENSIONS SEE ISO 2768-1: DESIGNATION
FOR GENERAL TOLERANCE ON WELDED CONSTRUCTIONS SEE ISO 13920: CLASS

M
A E

2D STATUS IN WORK

GENERAL TOLERANCES	
ISO 14405-1 DIMENSIONAL TOLERANCING	ISO 13920-B F WELDMENTS
ISO 8015 TOLERANCING	EN 10243-F FORGING
ISO 2768-mK-E LINEAR DIMENSIONS, SYMMETRY	DIN 6935 COLD BENDING
ISO 9013-422 THERMAL CUTTING	DIN 6930-m STAMPING
ISO 8062 CASTING	



REV_6
DIMENSIONS ALTERED
PD_PEL_KLP_DRW_23E
2016-07-04 S.W.S.

REV_5
MATERIAL GRADE
AMENDED
PD_PEL_KLP_DRW_23E
2016-04-05 M.P.T.

REV_4
TOLERANCES ALTERED
PD_PEL_KLP_DRW_23E
2015-10-19 M.J.M.

REV_3
TOLERANCES ALTERED
PD_PEL_KLP_DRW_23E
2015-08-27 M.J.M.

REV_2
DESIGN CHANGE
PD_PEL_KLP_DRW_23E
2015-05-18. M.R.

REV_1
CUTTING MARGINS ADDED
PD_PEL_KLP_DRW_23E
2015-05-05. M.N.N.

AMENDMENTS
MASS 20.32 Kg



PART EDGES ISO 13715

2024-07-15
KILNER PARK LOCOMOTIVES
RIB
PIVOT TRANSOM

MATERIAL
STEEL
SANS 50025 GRADE S355 J2C+N
PLATE 16
414 x 522

SHEET 1 OF 1

COPYRIGHT
THIS DRAWING TOGETHER WITH THE COPYRIGHT
IS THE PROPERTY OF
TRANSNET
THIS DRAWING OR ANY PART THEREOF IS NOT
TO BE COPIED OR OTHERWISE REPRODUCED
OR USED FOR MANUFACTURE OR ANY OTHER
PURPOSE WITHOUT THE WRITTEN PERMISSION
FROM
CHIEF EXECUTIVE,
TRANSNET ENGINEERING

ASSEMBLY DRG No.	DRAWN	M.J.M.
	CHECKED	M.N.N.
CLASS 23E	APPROVED	B.E.D.
TYPE ELECTRIC LOCOMOTIVE	DATE	
	SCALE	1:5

TRANSNET ENGINEERING

A-3 PROJECTION

DOCUMENT REFERENCE No. PD_PEL_KLP_DRW_23E

TRANSNET ENGINEERING

No. CUT 25A0113 REV. 6