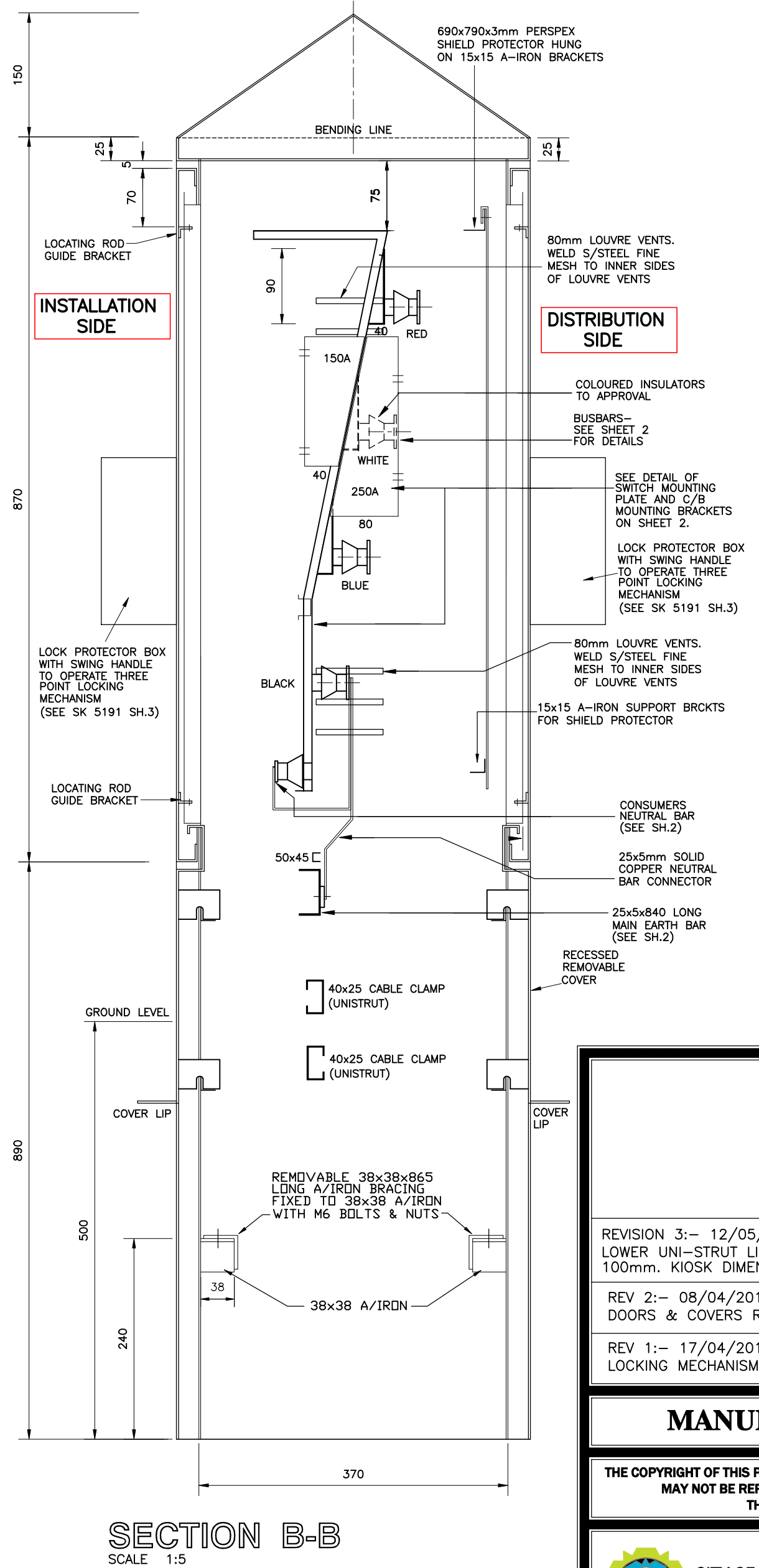
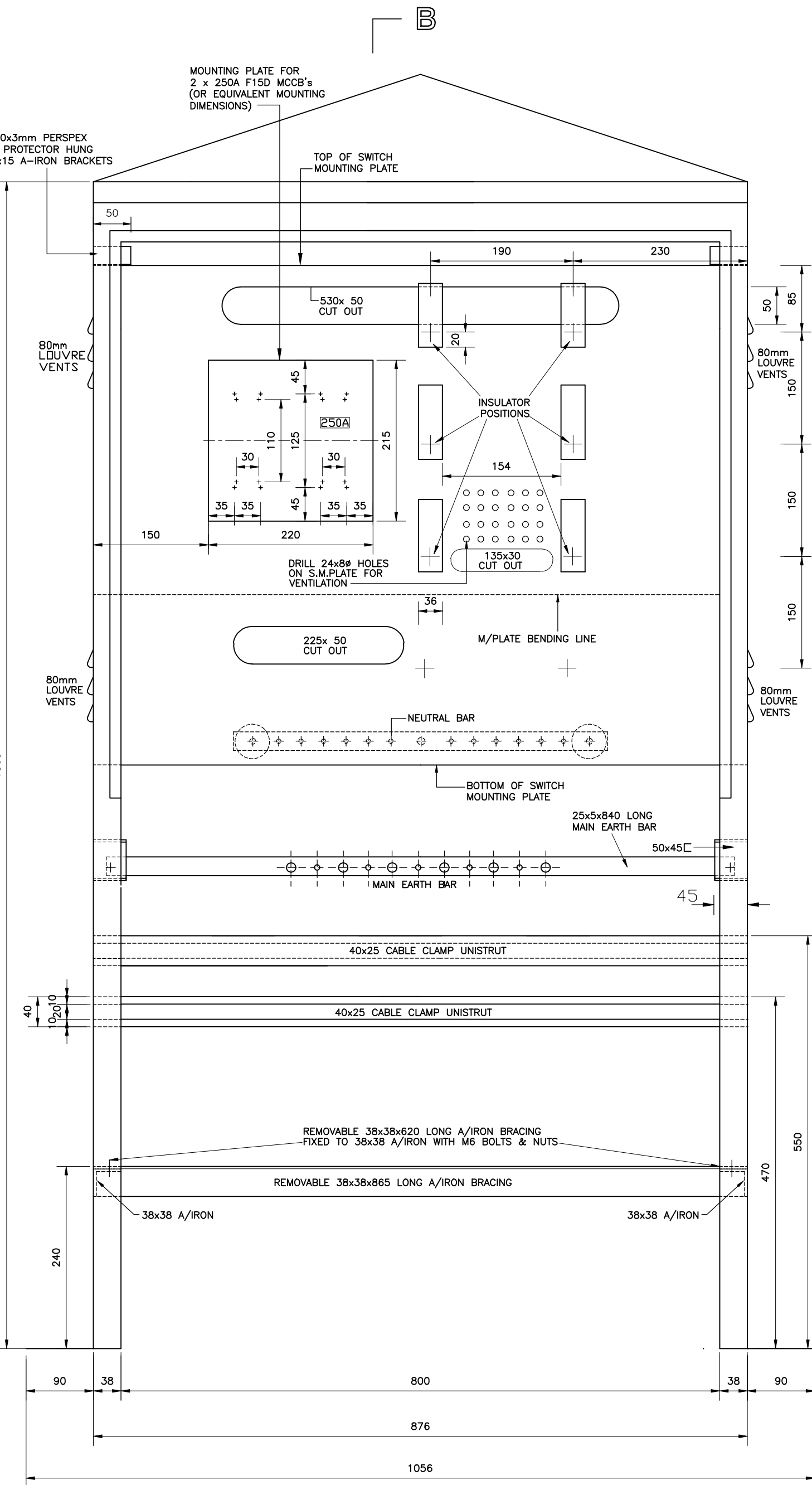
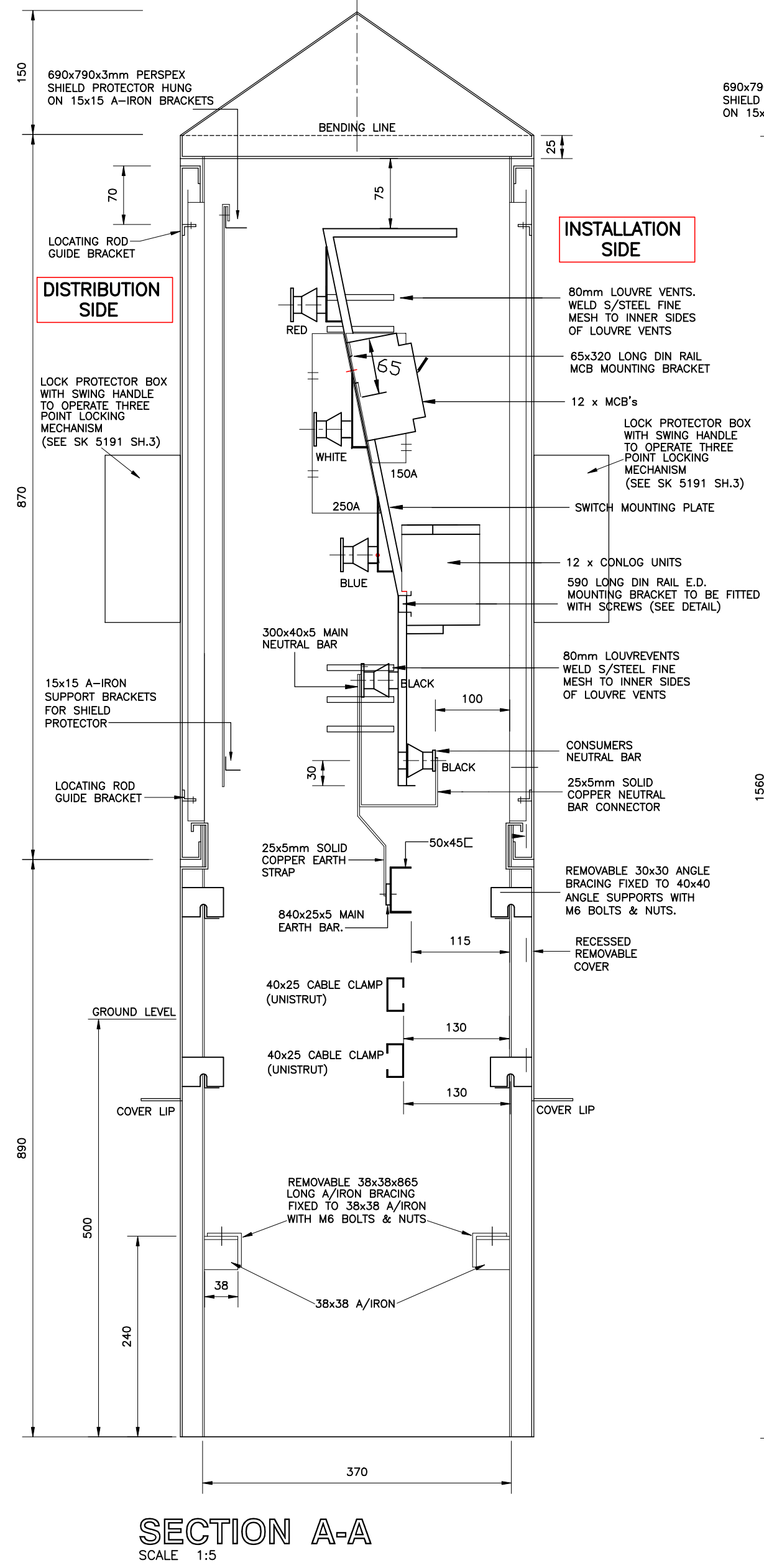
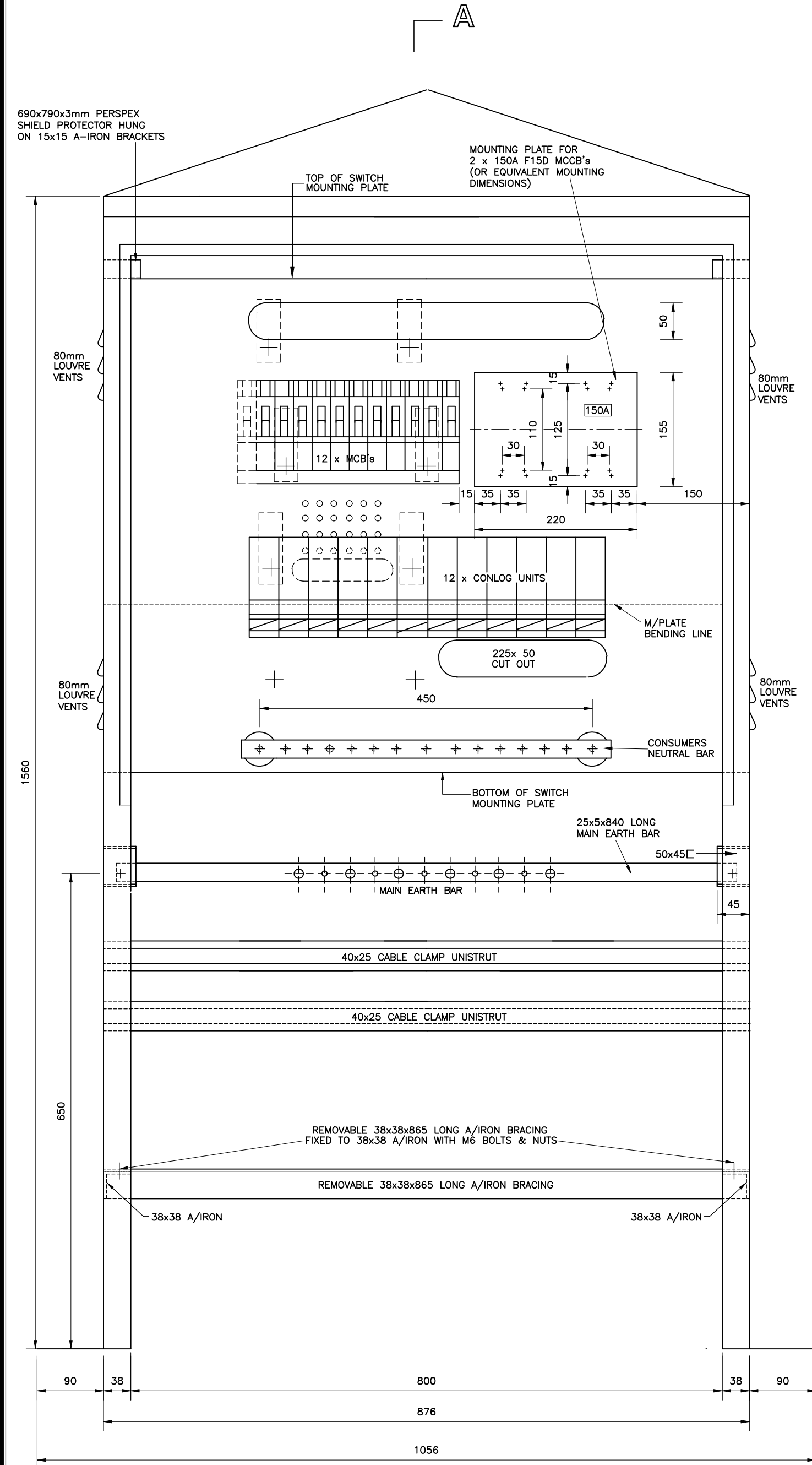


NOTES

ALL NUTS & BOLTS TO BE BRASS OR STAINLESS STEEL. FLAT & SPRING WASHERS TO BE INCLUDED.

MCB'S TO BE CURVE 1 ORANGE TOGGLE COMPLETE WITH SHROUDS AND CLIPS.

THE THREE POINT LOCKING MECHANISM SHALL FIRMLY SECURE THE DOOR AND NOT ALLOW LEVERAGE FOR VANDALISM.



- NOTE:--**
1. MATERIAL TO BE 304/316 OR EQUIVALENT STAINLESS STEEL OF A MINIMUM THICKNESS OF 1.6mm
 2. ALL STEEL PARTS TO BE HOT DIPPED GALVANISED
 3. COPPER BUSBARS TO BE TINNED.
 4. ALL SCREWS & BOLTS COMPLETE WITH NUTS & FLAT SPRING WASHERS SHALL BE BRASS OR STAINLESS STEEL.
 5. BOLTS SUPPLIED WITH BUSBARS TO BE MIN. 40 LONG.
 6. M6 & M8 BOLTS TO BE 25mm LONG.
 7. FINE MESH S/STEEL EXPANDED METAL TO BE WELDED TO INNER SIDES OF LOUVRE VENTS.

MANUFACTURING DRAWING

THE COPYRIGHT OF THIS PLAN AND DESIGN RESIDES WITH THE CITY OF CAPE TOWN AND MAY NOT BE REPRODUCE ISSUED OR USED FOR ANY PURPOSE OTHER THAN IT WAS INTENDED FOR ORIGINALLY

ENERGY DIRECTORATE
DRAWING & RECORD CENTRE
ARCHITECTURAL/MECHANICAL SECTION
HEAD OFFICE BLOEMHOF ROAD
BELLVILLE, PRIVATE BAG X44 7535

DIRECTOR: ELECTRICITY	E. CAPE
HEAD: ENGINEERING	J. VAN DER MERWE
MANAGER: DRAWING & RECORD CENTRE	

PROJECT TITLE
**METER KIOSK
12 WAY (STEEL)
(SAP: 200002097)**

APPROVED BY:	CHECKED	
COMPILED: A. HALL		
SCALE: AS SHOWN	DATE: 13/04/2016	
DRAWING No. DR 3169A	SHEET 1 OF 2	REVISION No. 3
		SHEET SIZE A1