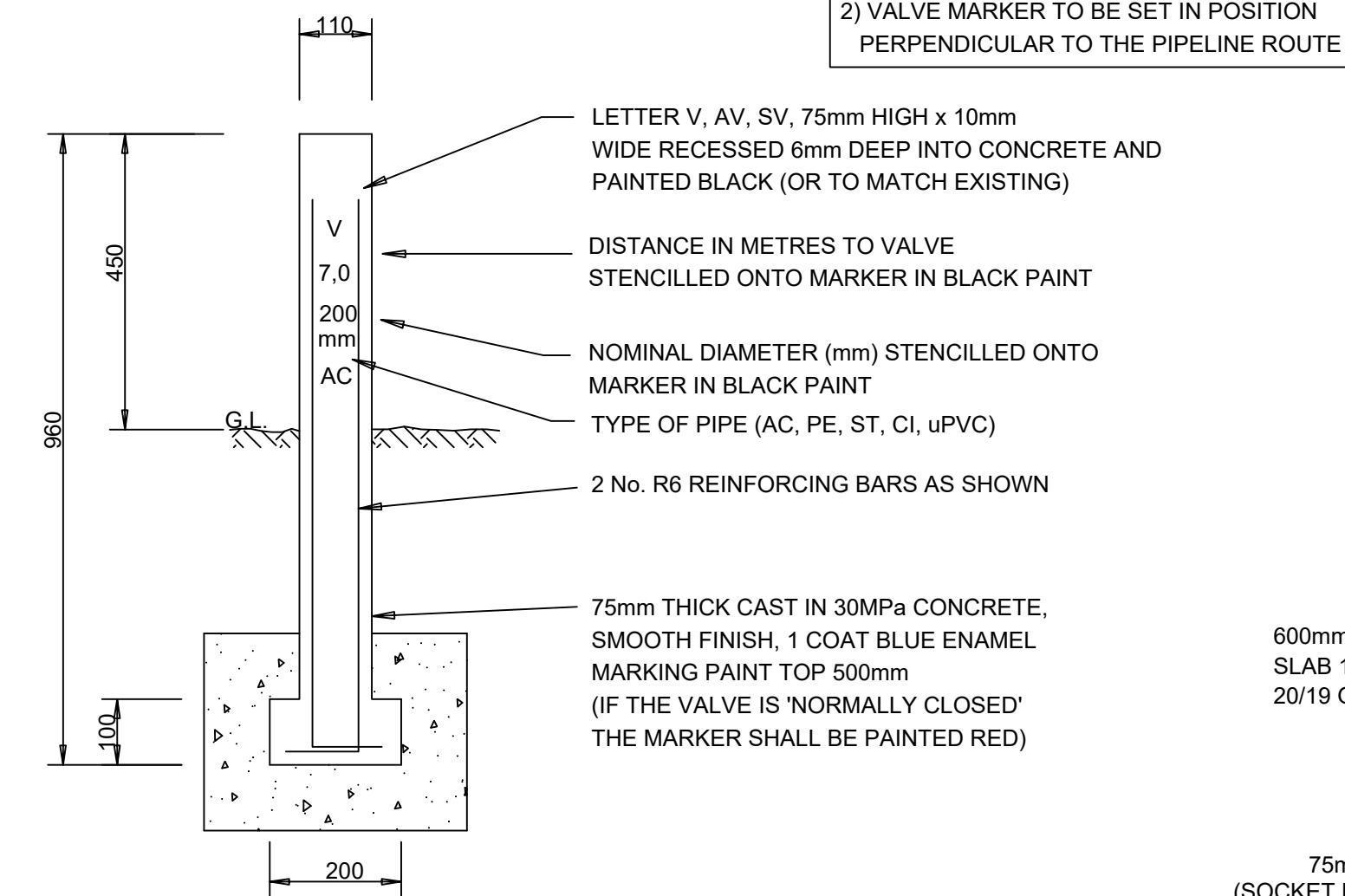


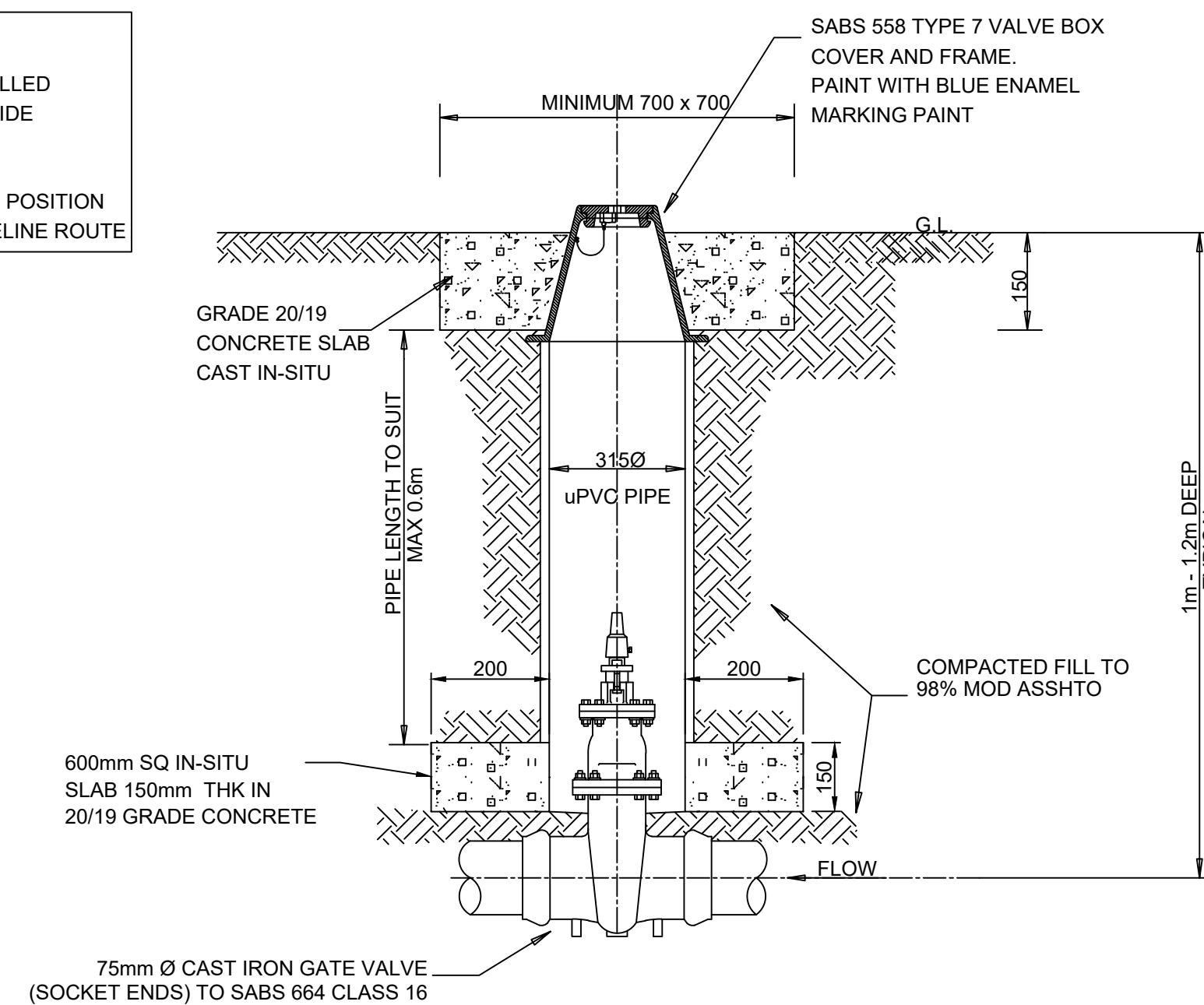
TYPICAL VALVE MARKER POST

SCALE: NTS



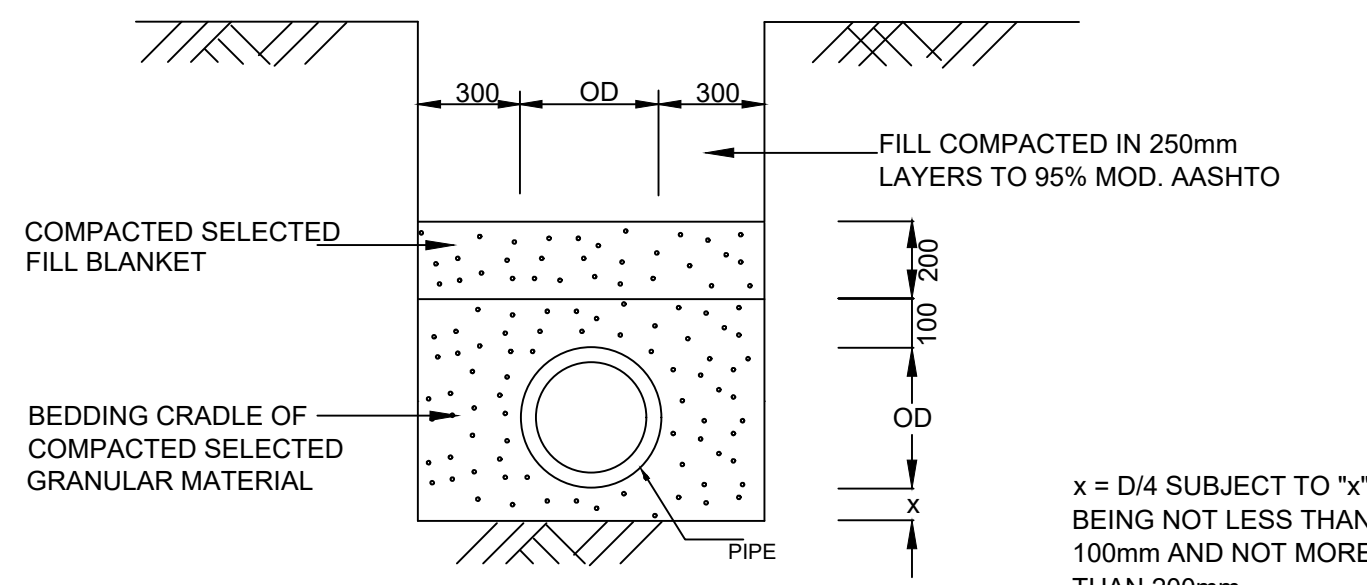
TYPICAL VALVE CHAMBER FOR DEPTHS FROM 1.0m TO 1.2m DEEP

SCALE: NTS



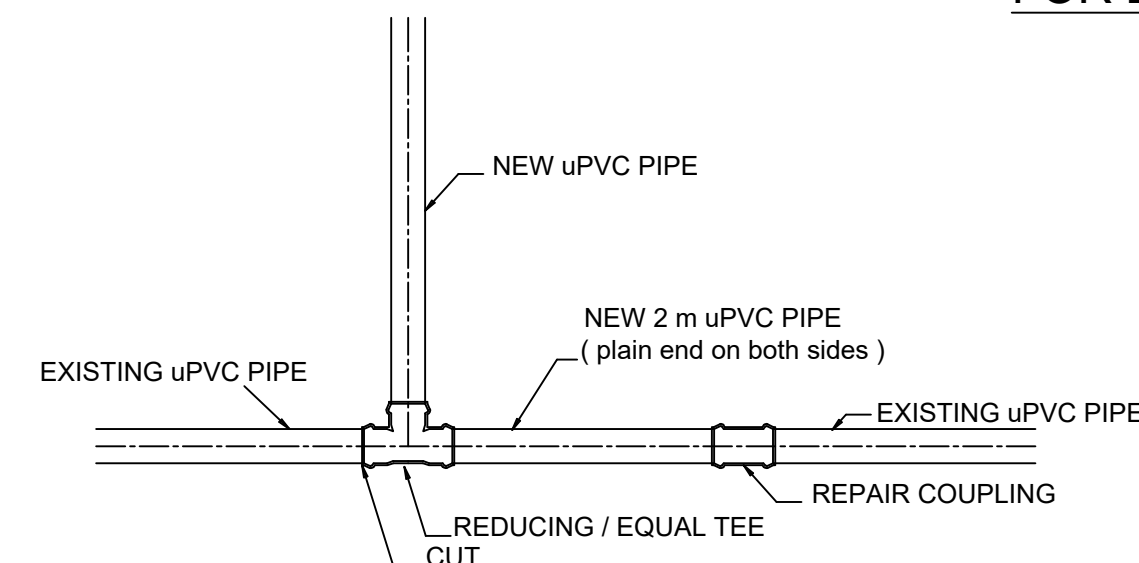
FLEXIBLE PIPE BEDDING

SCALE: NTS



TYPICAL CUT IN DETAIL

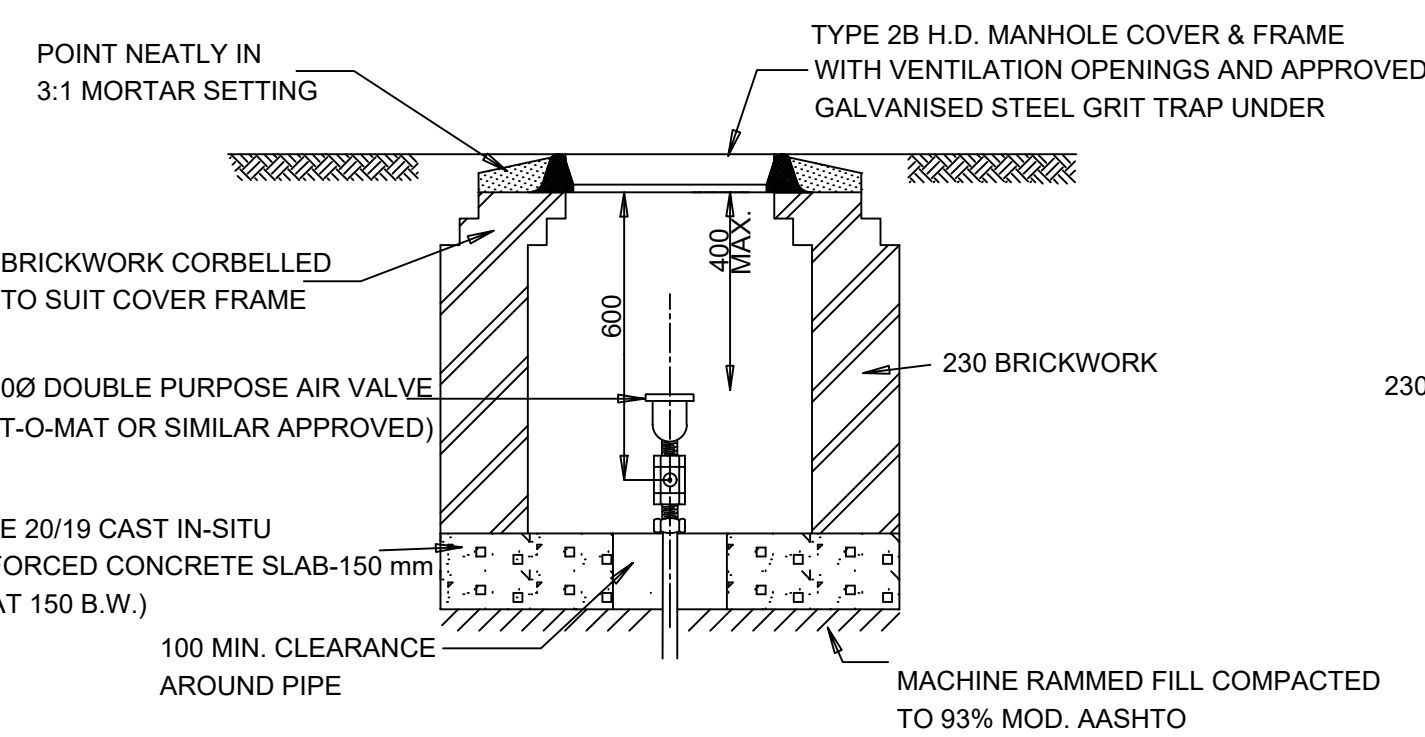
SCALE: NTS



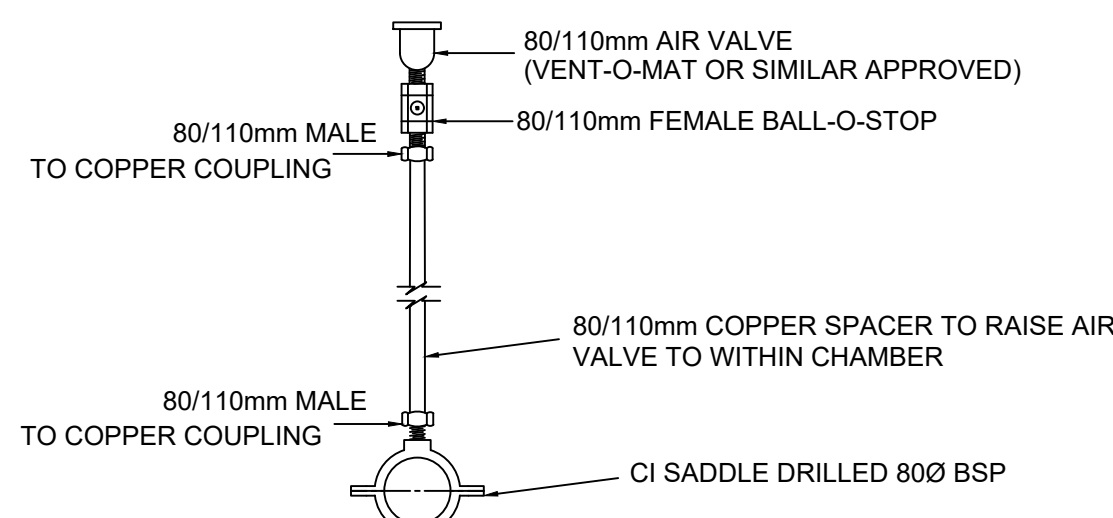
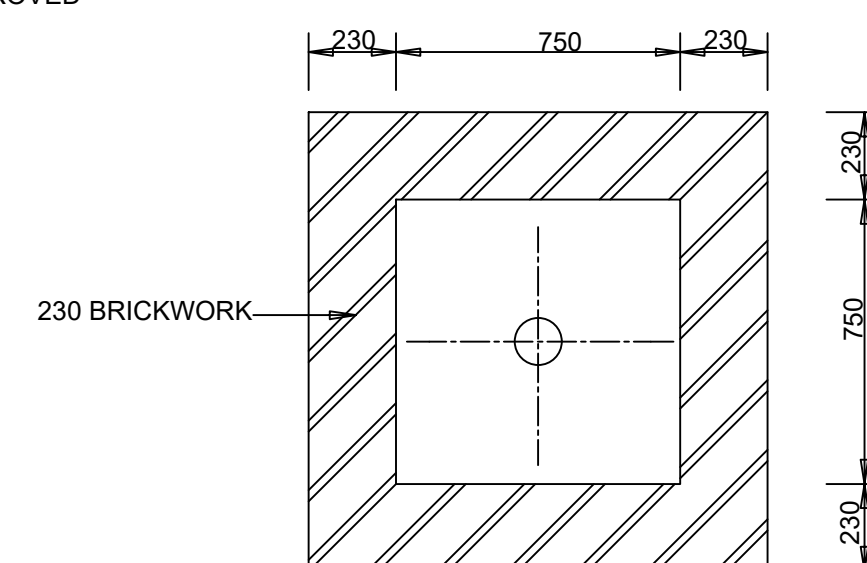
SECTION

TYPICAL BRICK CHAMBER FOR ND80/110 AIR VALVE

NTS

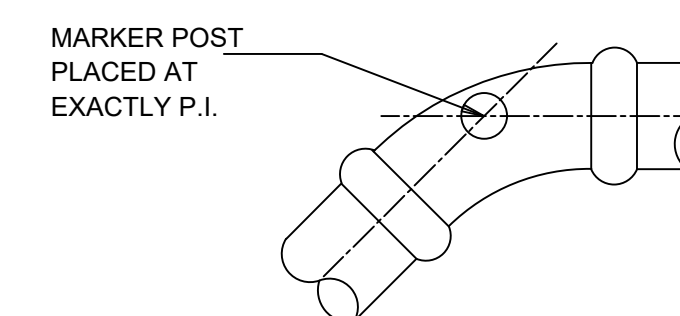


PLAN



DETAIL OF FITTINGS FOR ND80/110 AIR VALVE

NTS



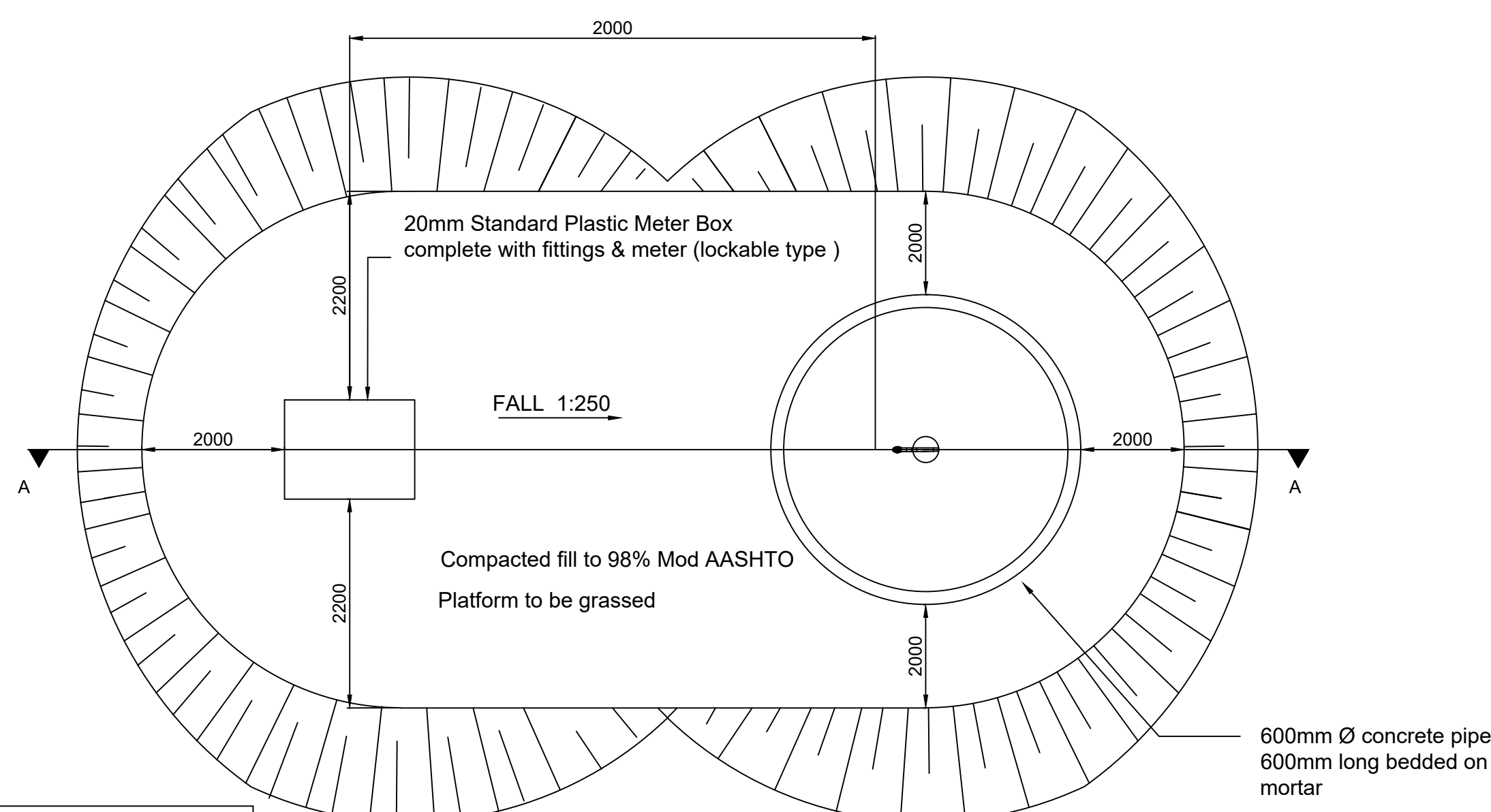
NOTE:- PIPELINE MARKERS TO BE INSTALLED AT ALL CHANGES TO DIRECTION AND AS INSTRUCTED BY THE ENGINEER.

MARKER POST POSITION

SCALE: NTS

STANDPIPE PLAN

SCALE: NTS



Signature by Client Department

Revisions	Rev. no	Date	Description	Rev by
	A	22/06/2021	REPORT	B.J

Checked by Consultant

Name: Pr. Eng. No.

Signature Date

Client:

UMKHANYAKUDA DISTRICT MUNICIPALITY

STAND 13, 433 KINGFISHER ROAD MKUZE 3965

TEL: 035 573 1536

PO BOX 449 MKUZE 3965

Implementing Agent:

SYDWALT

SYDWALT (PTY) Ltd
2 MORRIS STREET
WOODMEAD EXT 1
2191

TEL: 010 442 4795
info@sydwalt.co.za

Project:

WATER INTERVENTION FOR HOTSPOT AREAS IN WARD 9 AND 13 UMHLABUYALINGANA LOCAL MUNICIPALITY

Drawing Description

TYPICAL DETAILS

Designed by	S.C	Date:	FEBRUARY 2023
Drawn by	B.J	Date:	FEBRUARY 2023
Checked by	K.N	Scale:	AS SHOWN
Sheet Number	R = REPORT D = DRAFT T = TENDER	P = PRELIMINARY C = CONSTRUCTION A = AS BUILT	DISCIPLINE: WATER
PROJECT	NUMBER	STATUS	REVISION
SYD23WI913	- 901 -	R	- 00