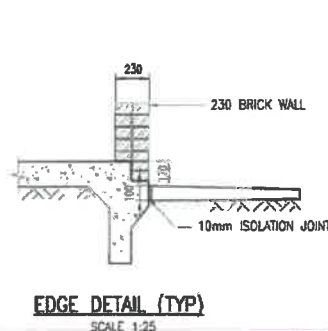
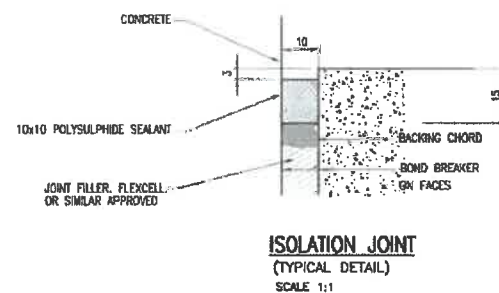


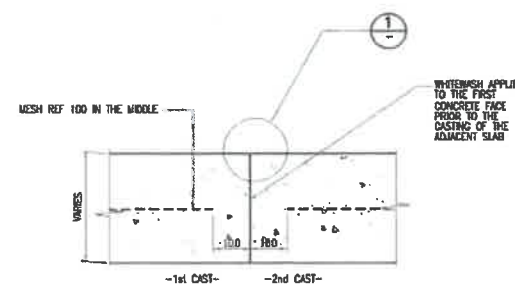
APRON SLAB LAYOUT  
SCALE 1:75



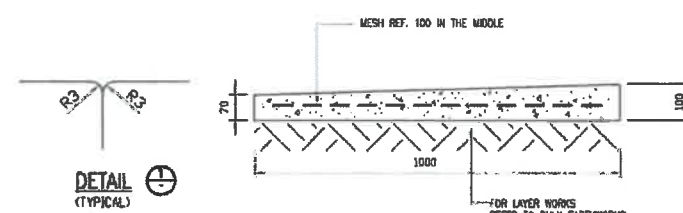
EDGE DETAIL (TYP)  
SCALE 1:25



ISOLATION JOINT  
(TYPICAL DETAIL)  
SCALE 1:1



APRON SLAB JOINT DETAIL (C.J.)  
(TYPICAL)  
SCALE 1:5



TYPICAL APRON SLAB DETAIL  
SCALE 1:10

# GENERAL NOTES:

- THIS DRAWING TO BE READ IN CONJUNCTION WITH ALL RELEVANT ARCHITECTS' DRAWINGS AND ENGINEER'S DRAWINGS.
- DISCREPANCIES MUST NOT BE SOLED OR ASSUMED. AFTER NOTIFICATION, DISCREPANCIES OR MISSING DIMENSIONS WILL BE CORRECTED BY WRITING BY THE ENGINEER.
- UNLESS OTHERWISE NOTED, FINISH TO CONCRETE TO BE AS FOLLOWS:  
APRON SLAB: FINE, TROWEL
- CONCRETE STRENGTH: 30Mpa
- COVER TO REINFORCEMENT: AS SHOWN ON BENDING SCHEDULES.

- DIMENSIONS AND LEVELS TO BE VERIFIED BY CONTRACTOR ON SITE. ANY DEVIATION OF DETAILS FROM DETAILS SHOWN HERE TO BE REPORTED TO THE ENGINEER IMMEDIATELY.
- UNLESS OTHERWISE NOTED IN THE PROJECT TECHNICAL SPECIFICATION, ALL CONSTRUCTION DETAILS TO COMPLY WITH S.A.S. 1200 SERIES OF SPECIFICATIONS.
- ALL CONCRETE TO HAVE A MINIMUM CEMENT CONTENT OF 420 kg/m<sup>3</sup> AND MAXIMUM SAND/CEMENT RATIO OF 2:2.
- REINFORCEMENT SHALL BE PLACED IN EVERY FOURTH COURSE UP TO DOORS AND WINDOWS CLASS 1 MORTAR.
- MINIMUM STRENGTH TO HAVE MINIMUM COMPRESSIVE STRENGTH OF 10.5Mpa
- ENGINEER TO INSPECT THE SLAB PRIOR TO CASTING OF CONCRETE
- 50mm BULKING TO BE 100mm CAST BELOW FOUNDATIONS

Rev. No.	Description	Rev. No.	Description	Rev. No.	Description
1	REVISION FOR CONSTRUCTION	2	REVISION FOR CONSTRUCTION	3	REVISION FOR CONSTRUCTION
4	REVISION FOR CONSTRUCTION	5	REVISION FOR CONSTRUCTION	6	REVISION FOR CONSTRUCTION
7	REVISION FOR CONSTRUCTION	8	REVISION FOR CONSTRUCTION	9	REVISION FOR CONSTRUCTION
10	REVISION FOR CONSTRUCTION	11	REVISION FOR CONSTRUCTION	12	REVISION FOR CONSTRUCTION

<p>FREE STATE PROVINCIAL GOVERNMENT DEPARTMENT OF HUMAN SETTLEMENT</p>		<p>Physical Address: LERONG BUILDING, ST ANDREW STREET, BLOEMFONTEIN</p>		<p>Postal Address: PO BOX 221, BLOEMFONTEIN, 9007</p>	
--	--	--	--	---	--

<p>APPROVED ORGANIZATION: LITE CONSULTING</p>		<p>PERFORMING ORGANIZATION: LITE CIVIL &amp; STRUCTURAL</p>	
<p>Physical Address: LITE House, Building 1, Office Park (Belvedere Plaza), 5 Eglon Road, Sunning Hill 2157</p>		<p>Postal Address: Postnet Suite No. 328, Private Bag 128, Sunninghill, 2157</p>	

<p>APPROVED BY: K. MUDZAMIRI</p>		<p>DATE: 2013/02/22</p>	
<p>Project Name: DARK &amp; SILVER CITY HOUSING DEVELOPMENT (BOTTOM SITE)</p>		<p>Project Number: 0404</p>	
<p>Drawing Title: BUILDING TYPE 'A' APRON SLAB LAYOUT AND DETAILS</p>		<p>Client Drawing No. E404-S-401</p>	

<p>APPROVED: K. MUDZAMIRI</p>		<p>DATE: 2013/02/22</p>	
<p>CHECKED: B. NDLOVU</p>		<p>DATE: 2013/02/22</p>	
<p>DRAWN: D.W.K.</p>		<p>DATE: 2013/02/22</p>	
<p>ALL RIGHTS ON THIS DRAWING REST AT ANY TIME WITH LITE CONSULTING, WITHOUT WRITTEN CONSENT IT MAY NOT BE COPIED, REPRODUCED, COMMUNICATED OR RENDERED ACCESSIBLE TO THIRD PARTIES.</p>		<p>Rev. 4</p>	