



**CITY OF CAPE TOWN  
ISIXEKO SASEKAPA  
STAD KAAPSTAD**

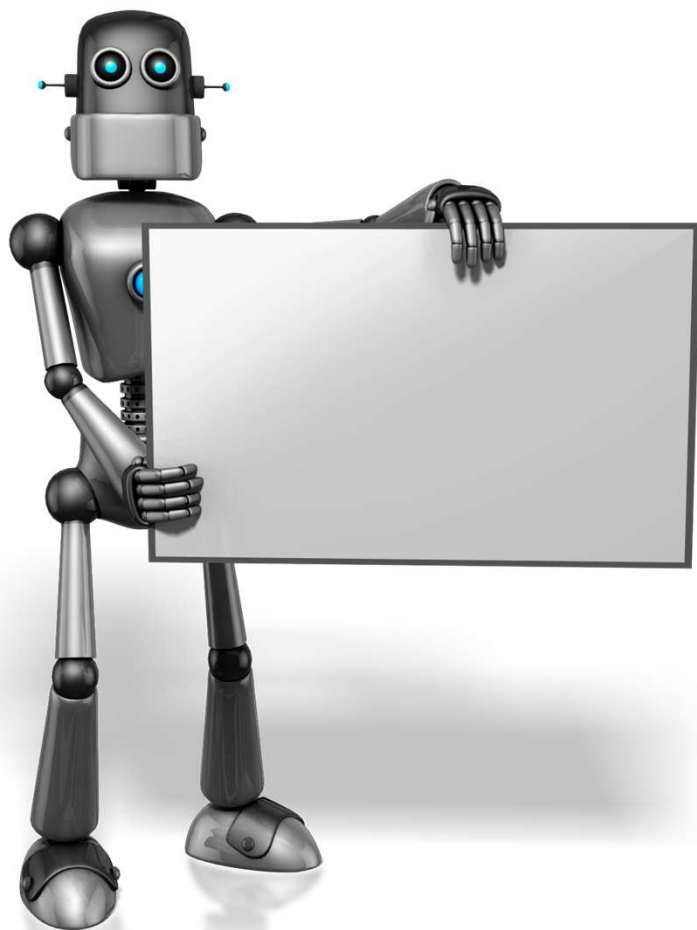
**TENDER NO. 229S/2025/26**

**TOWING, SALVAGING AND RECOVERY OF TRUCKS  
AND PLANT ON AN AD-HOC BASIS FOR THE CITY OF  
CAPE TOWN FOR ITEMS NOT AWARDED ON  
080S/2024/25**

**Making progress possible. Together.**

# CONTENTS

---



1. Welcome and introduction
2. General tender information
3. Conditions of tender
4. Tenderers obligation
5. Evaluation of Tenderers
6. Price Schedule
7. CPA
8. Schedule F.13: Information to be provided with the tender
9. Specifications
10. Special Conditions of Tender



# 1. WELCOME AND INTRODUCTION

---

- Procuring Department: CCT - Fleet Management Department
- Represented by: Jerome Lubbe
- Commodity to be Procured: Services



## 2. GENERAL TENDER INFORMATION

---

Tender Advertised	:	<b>30 April 2026</b>
Clarification Meeting	:	Non – Compulsory but strongly recommended
Closing Date	:	<b>03 June 2026 @ 10am</b>
Tender Box	:	Box Number <b>236</b>
Contract Duration	:	Until 31 December 2029 from the Date of Commencement
Tender Queries	:	<a href="mailto:scm.tenders4@capetown.gov.za">scm.tenders4@capetown.gov.za</a>

# 3. CONDITIONS OF TENDER

---

## 2.1.5 Procurement Procedure

The CCT intends to appoint three tenderers (the highest ranked tenderer (“the winner”) and in addition two “alternative tenderers”), **per category**, for the allocation of work. If insufficient responsive bids are received, the CCT reserves the right to appoint fewer tenderers, or not to appoint any tenderers at all.

Suppliers, once appointed and subject to operational requirements, will be invited to deliver the goods or services on a “winner-takes-all” **per category** basis, whereby the order will always be offered and, if accepted, allocated to the highest ranked tenderer (“the winner”), and only if he refuses the work will be offered to the next highest ranked tenderer from the alternative tenderers).

"The City of Cape Town will however only utilise the 1st Alternative Service Provider (2nd highest ranked tenderer) per main item. if the Main Service Provider (highest ranked tenderer) is unable to either:

- Deliver the service within the stipulated time
- Deliver the required quantities
- Deliver as a result of any other circumstance beyond the tenderers control such as insolvency etc. And so forth pertaining to the utilisation of the 2nd Alternative Service Provider (3rd highest ranked tenderer)."

The contract period shall be from the commencement date of the contract until **31 December 2029**.



# 4. TENDERERS OBLIGATION

---

## 2.2.1.1.5 Additional Eligibility Requirements

Tendering entity to submit the following with their tender submission:

Should a tenderer fail to submit the required documents at closure of this tender, the tenderer's submission will be deemed non-responsive.

- a) For owned towing/drawing vehicle, the submission of the following is required:
- Copies of registration papers (RC1) of each vehicle offered in the name of the tendering entity.

Or

- b) For leased or intended to be leased towing/drawing vehicle the submission of the following is required:
- Copies of the lease agreement between the tendering entity and lessor indicating the vehicle/s that is/will be leased from the lessor.
  - Copies of registration papers (RC1) of each vehicle offered in the name of the Lessor and/or Intended Lessor



# 5. EVALUATION OF TENDERERS

## 2.3.10.3 Scoring of tenders (price and preference)

2.3.10.3.1 Points for price will be allocated in accordance with the formula set out in this clause based on the price per item / rates as set out in the Price Schedule (Section 7):

- Based on the sum of the prices/rates in relation to the estimated quantities.

### 2.3.10.3.4 Applicable formula:

The 80/20 preference point system will apply to this tender or the lowest acceptable tender will be used to determine the applicable preferences

The 80/20 price/preference points system will be applied to the evaluation of responsive tenders up to and including a Rand value of R50'000'000 (all applicable taxes included), whereby the order(s) will be placed with the tenderer(s) scoring the highest total number of adjudication points.

Price shall be scored as follows:

#### **Gender are women (ownership)\* 5**

>75% - 100% women ownership: 5 points  
>50% - 75% women ownership: 4 points  
>25% - 50% women ownership: 3 points  
>0% - 25% women ownership: 2 points

0% women ownership = 0 points

#### **Disability are disabled persons (ownership)\* 3**

WHO disability guideline  
>2% ownership: 3 points  
>0% - 2% ownership: 1.5 point  
0% ownership = 0 points

#### **Race are black persons (ownership)\* 5**

>75% - 100% black ownership: 5 points  
>50% - 75% black ownership: 4 points  
>25% - 50% black ownership: 3 points  
>0% - 25% black ownership: 2 points

0% black ownership = 0 points

#### **Promotion of Micro and Small Enterprises 7**

Micro with a turnover up to R20million and Small with a turnover up to R80 million as per National Small Enterprise Act, 1996 (Act No.102 of 1996)

SME partnership, sub-contracting, joint venture or consortiums



# 6. PRICE SCHEDULE

---

## Pricing Instructions:

- 5.1 State the rates and prices in Rand unless instructed otherwise in the Conditions of Tender.
- 5.2 Include in the rates, prices, and the tendered total of the prices (if any) all duties, taxes (except Value Added Tax (VAT), and other levies payable by the successful tenderer, such duties, taxes and levies being those applicable 14 days before the closing time stated in the General Tender Information.
- 5.3 All prices tendered must include all expenses, disbursements and costs (e.g. transport, accommodation etc.) that may be required for the execution of the tenderer's obligations in terms of the Contract, and shall cover the cost of all general risks, liabilities and obligations set forth or implied in the Contract as well as overhead charges and profit (in the event that the tender is successful). All prices tendered will be final and binding.
- 5.4 All prices shall be tendered in accordance with the units specified in this schedule.
- 5.5 Where a value is given in the Quantity column, a Rate and Price (the product of the Quantity and Rate) is required to be inserted in the relevant columns.
- 5.6 The successful tenderer is required to perform all tasks listed against each item. The tenderer must therefore tender prices/rates on all items as per the section in the Price Schedule. **An item against which no rate is/are entered, or if anything other than a rate or a nil rate (for example, a zero, a dash or the word "included" or abbreviations thereof) is entered against an item, it will also be regarded as a nil rate having been entered against that item, i.e. that there is no charge for that item. The Tenderer may be requested to clarify nil rates, or items regarded as having nil rates; and the CCT may also perform a risk analysis with regard to the reasonableness of such rates.**



## 6. PRICE SCHEDULE Cont.

---

### Pricing Instructions: Cont.

5.7 Provide fixed rates and prices for the duration of the contract that are not subject to adjustment except as otherwise provided for in clause 17 of the Conditions of Contract and as amplified in the Special Conditions of Contract.

5.8 Tenderers must submit rates as per the Unit of Measurement in the Price Schedule. If this is not adhered to, the Tenderer's offer will be considered as non-responsive.

5.9 Tenderers must quote a flat rate in the column provided in the Price Schedule C.4 where Flat rate means a nett single rand value (excl. VAT) and not a rate/price per hour or rate/price per km. Failure to adhere to this pricing instruction will deem a tenderer non-responsive.

5.10 The call-out fee for category five (5) must be a fixed value that shall include the assessment, method statement and detailed quote to salvage or recover the specialised vehicle under exceptional circumstances and events.

5.11 All sub-items of a main item must be priced for it to be considered for that main item (e.g. Items 2.1, 2.2 and 2.3 must be priced to be considered for Item 2). Failure to adhere to this pricing instruction will deem a tenderer non-responsive per main item.

5.12 Tenderers may however tender for main items of choice.



## 5. PRICE SCHEDULE Cont.

---

### Pricing Instructions: Cont.

5.13 Services are to be priced as a “flat rate” / single fixed price across the entire metropole per category stipulated in the Price Schedule, from the start location of the callout (of the tow vehicle) to the incident location, to the delivery address irrespective of the kilometres travelled, unless otherwise specified.

5.14 Provisional sum, will be monitored through the entire period and is not to be exceeded. Provisional sums shall only be used due to the high variability of salvage and/or recovery operations, as described in the specifications covering complex and off-road plant/specialised truck recoveries (mountains, beaches, rivers, landfills, uneven terrain, etc.). This section cost per service shall be determined through a quotation submitted by the service providers following a call-out for site assessment as determined by the CCT. This quotation shall be subject to approval by the line department and Contract Manager prior to the commencement of any recovery works



## 6. PRICE SCHEDULE Cont.

Pricing Table: Categories 1 and 2

Item	Description	Unit of Measurement	Price per Unit of Measurement (Flat Rate) (Excl. VAT) (R)
<b>1.</b>	<b><u>HEAVY VEHICLES</u></b> <b>(with a GVM between 16 001Kg and 30 000kg)</b>		
1.1	Towing	Per service	R
1.2	Recovery	Per service	R
1.3	Salvaging	Per service	R
Item	Description	Unit of Measurement	Price per Unit of Measurement (Flat Rate) (Excl. VAT) (R)
<b>2.</b>	<b><u>EXTRA HEAVY VEHICLES</u></b> <b>(with a GVM between 30 001Kg and 50 000kg)</b>		
2.1	Towing	Per service	R
2.2	Recovery	Per service	R
2.3	Salvaging	Per service	R



## 6. PRICE SCHEDULE Cont.

Pricing Table: Categories 3 and 4

Item	Description	Unit of Measurement	Price per Unit of Measurement (Flat Rate) (Excl. VAT) (R)
<b>3.</b>	<b>HEAVY PLANT AND SPECIALISED TRUCKS Salvage and Recovery works (with a GVM starting at 12 001kg up to 30 000kg)</b>		
3.1	Recovery (standard recovery where applicable)	Per service	R
3.2	Salvaging (standard salvaging where applicable)	Per service	R
Item	Description	Unit of Measurement	Price per Unit of Measurement (Flat Rate) (Excl. VAT) (R)
<b>4.</b>	<b>HEAVY PLANT AND SPECIALISED TRUCKS Salvage and Recovery works (with a GVM starting at 30 001kg up to 50 000kg)</b>		
4.1	Recovery (standard recovery where applicable)	Per service	R
4.2	Salvaging (standard salvaging where applicable)	Per service	R



## 6. PRICE SCHEDULE Cont.

Pricing Table: Categories 5

Item	Description	Unit of Measurement	Price per Unit of Measurement (Flat Rate) (Excl. VAT) (R)
<b>5.</b>	<b>HEAVY PLANT AND SPECIALISED TRUCKS Salvage and Recovery works (with a GVM starting at 12 000kg up to 50 000kg)</b>		
5.1	Call-Out fee Refer to 5.10 in the pricing instruction	Per service	R
5.2	Salvaging (standard salvaging where applicable)	Per service	R
5.3	<u>Provisional Sum</u> Allow for Provisional sum of <b>R 300 000.00</b> for specialised, variable and non-standard recovery work, request quotations from the appointed service provider prior to the commencement of work	Sum	R
5.4	Allow for mark-up on the above provisional sum on item 5.3 for third party services	%	.....



# 7. CPA

## Annexure F - Tender Returnable Documents

### Schedule F.1: Contract Price Adjustment

#### Annexure F - Tender Returnable Documents

#### F.1: Contract Price Adjustment and/or Rate of Exchange Variation

##### 1. TENDER CONDITIONS

- 1.1 The Contract Price Adjustment (CPA) mechanism and/or provisions relating to Rate of Exchange (RoE) Variation, contained in this schedule is compulsory and binding on all Tenderers/Suppliers and this schedule (the parts relevant to the particular tender) must be completed by all Tenderers / Suppliers.
- 1.2 Tenderers/Suppliers are not permitted to amend, vary, alter or delete this schedule or any part thereof unless otherwise stated in this schedule.
- 1.3 Tenderers are not permitted to offer fixed and firm prices except as provided for in the Price Schedule.

##### 2. CPA PROVISIONS SELECTION

- 2.1 The prices stipulated on the Price Schedule are subject to adjustment as set out below.
- 2.2 Tenderer to indicate the specific CPA and/or RoE provisions applicable to their bid by marking the relevant checkboxes below. Tenderers to note that the CPA and/or RoE provisions are not exclusive and multiple CPA Types can exist if the bid contains both local and foreign exchange based pricing. In such cases the CPA and/or ROE provision applies only to that particular portion of the tendered price.
- 2.3 The CPA and/or RoE provisions applicable to this tender and resulting contract are to be indicated below by checking the relevant boxes (with multiple selections only where indicated permissible):

	<u>Indicate option</u>	<u>CPA Type</u>	<u>Period</u>	<u>Refer to Section</u>
A	↓ N/A	FIRM PRICES as per Pricing Schedule	Annual	Pricing Schedule C.4 and Schedule F.1 (A)
<b>LOCAL (RSA) TENDER CONTENT:</b>				
EITHER				
B	N/A	SEIFSA Index based CPA	Monthly / Quarterly	Schedule F.1 (B)
OR				
C	N/A	Pricelist / Quotation Based CPA	Ad-Hoc	Schedule F.1 (C)
OR				
D		STATS SA CPI Index Based CPA	Annually	Schedule F.1 (D)
OR/AND				
E	N/A	Sectorial Determination 1:Contract Cleaning Sector	Annually	Schedule F.1 (E)

D  STATS SA CPI Index Based CPA

Annually Schedule F.1 (D)





# 9. SPECIFICATIONS

VEHICLE CLASSES REQUIRED TO BE TRANSPORTED:	REQUIREMENTS OF TOWING/SALVAGING/RECOVERY VEHICLE(S)	VEHICLE CLASSES REQUIRED TO BE TRANSPORTED:	REQUIREMENTS OF TOWING/SALVAGING/RECOVERY VEHICLE(S)
Category 1. HEAVY MOTOR VEHICLES	The drawing vehicle / tow truck vehicle must have a minimum GCM of 35 000 Kg	Category 2. EXTRA HEAVY MOTOR VEHICLES	The drawing vehicle / tow truck vehicle must have a minimum GCM of 56 000 Kg.
HEAVY VEHICLES	SERVICE REQUIREMENTS	EXTRA HEAVY VEHICLES	SERVICE REQUIREMENTS
<p>All vehicles typically requiring a code C license, with a GVM between 16 001kg and 30 000kg.</p> <p>All trucks / vehicles to be transported shall have three (3) axles and up to ten (10) wheels (double rear axle).</p>	<p>There should be provision for extension air hoses should charging the broken down vehicles air system be required.</p> <p>Should the truck have an automatic transmission, which could be damaged by towing with the engine not running, the Service Provider must ensure that they can recover without consequential damage, which if found, the Service Provider will be liable for.</p> <p>Possible suggestions include:</p> <ul style="list-style-type: none"> <li>Lifting the driven axle off the ground.</li> <li>Trailer or low bedding the truck.</li> <li>Use of a bogie under the drive wheels.</li> <li>Removal of the prop shaft(s). Prop shaft(s) to be marked before removal. (This would require it to be re-installed, correctly aligned and re-torqued to OEM specifications, post recovery by the Service Provider, unless made void by the user branch with written consent transferring the accountability. The service provider will be held liable for any damage resulting from the prop shaft(s) being incorrectly refitted to the vehicle).Lifting of the front wheels should also take into account rear overhangs/departure angle. Any damage to the vehicle by the Service Provider conducting this type of tow will be for the Service Provider's account.</li> </ul> <p>Tenderer to ensure that all requirements as per the National Road Traffic Safety Act are adhered to while conducting the service.</p>	<p>All vehicles typically requiring a code EC license, with a GVM between 30 001Kg and 50 000Kg</p>	<p>There should be provision for extension air hoses should charging the broken down vehicles air system be required.</p> <p>Should the truck have an automatic transmission, which could be damaged by towing with the engine not running, the Service Provider must ensure that they can recover without consequential damage, which if found, the Service Provider will be liable for.</p> <p>Possible suggestions include:</p> <ul style="list-style-type: none"> <li>Lifting the driven axle off the ground.</li> <li>Trailer or low bedding the truck.</li> <li>Use of a bogie under the drive wheels.</li> <li>Removal of the prop shaft. Prop shaft to be marked before removal. (This would require it to be re-installed, correctly aligned and re-torqued to OEM specifications, post recovery by the Service Provider, unless made void by the user branch with written consent transferring the accountability. The service provider will be held liable for any damage resulting from the prop shaft being incorrectly refitted to the vehicle. Lifting of the front wheels should also take into account rear overhangs/departure angle. Any damage to the vehicle by the Service Provider conducting this type of tow will be for the Service Provider's account.</li> </ul> <p>Tenderer to ensure that all requirements as per the National Road traffic safety Act are adhered to while conducting the service.</p>



# 9. SPECIFICATIONS CONT.

VEHICLE CLASSES REQUIRED TO BE TRANSPORTED:	REQUIREMENTS OF TOWING/SALVAGING/RECOVERY VEHICLE(S)	VEHICLE CLASSES REQUIRED TO BE TRANSPORTED:	REQUIREMENTS OF TOWING/SALVAGING/RECOVERY VEHICLE(S)
Category 3. PLANT (MACHINERY) AND SPECIALISED TRUCKS	The drawing vehicle / tow truck vehicle must have capacity for GCM of at least 35 000 Kg.	Category 4. HEAVY PLANT (MACHINERY) AND SPECIALISED TRUCKS	The drawing vehicle / tow truck vehicle must have capacity for GCM of at least 60 000 Kg.
HEAVY PLANT AND SPECIALISED TRUCKS	SERVICE REQUIREMENTS	HEAVY PLANT AND SPECIALISED TRUCKS	SERVICE REQUIREMENTS
<p>All vehicles typically requiring a code C license, with a GVM between 12 501kg and 30 000 Kg, Plant types include by not limited to Bulldozers, Excavators, Compactors, Fire Appliances, Front-end Loaders, .</p>	<p>There should be provision for extension air hoses should charging the broken down vehicles air system be required.</p> <p>Service Providers should be aware that recovery and towing of these types of vehicles may occur off the road surface on uneven terrain.</p> <p>Suitable winching capacity of tow truck to be able to winch a truck/plant out of off-road terrain/conditions e.g. landfill/mountains/beaches/rivers</p> <p>Should the plant/truck have an automatic transmission, which could be damaged by towing with the engine not running, the Service Provider must ensure that they can recover without consequential damage, which if found, the Service Provider will be liable for.</p> <p>Possible Recovery &amp; salvaging include:</p> <p>Drawing of a truck/plant that has become stuck in different mediums e.g. soft sand/mud/rivers/canals/beaches/mountain tracks/drainage ditches can be recovered/salvaged by the use of a tow truck with adequate whincing capacity or the utilisation of a crane.</p> <p>Possible towing include:</p> <ul style="list-style-type: none"> <li>Trailer or low bedding the plant/specialised trucks.</li> </ul> <p>Tenderer to ensure that all requirements as per the National Road traffic safety Act are adhered to while conducting the service.</p>	<p>All vehicles typically requiring a code C license, with a GVM between 30 001kg and 50 000 Kg, Plant types include by not limited to Bulldozers, Excavators, Compactors, Fire Appliances, Front-end Loaders, .</p>	<p>There should be provision for extension air hoses should charging the broken down vehicles air system be required.</p> <p>Service Providers should be aware that recovery and towing of these types of vehicles may occur off the road surface on uneven terrain.</p> <p>Suitable winching capacity of tow truck to be able to winch a truck/plant out of off-road terrain/conditions e.g. landfill/mountains/beaches/rivers</p> <p>Should the plant/truck have an automatic transmission, which could be damaged by towing with the engine not running, the Service Provider must ensure that they can recover without consequential damage, which if found, the Service Provider will be liable for.</p> <p>Possible Recovery &amp; salvaging include:</p> <p>Drawing of a truck/plant that has become stuck in different mediums e.g. soft sand/mud/rivers/canals/beaches/mountain tracks/drainage ditches can be recovered/salvaged by the use of a tow truck with adequate whincing capacity or the utilisation of a crane.</p> <p>Possible towing include:</p> <ul style="list-style-type: none"> <li>Trailer or low bedding the plant/specialised trucks.</li> </ul> <p>Tenderer to ensure that all requirements as per the National Road traffic safety Act are adhered to while conducting the service.</p>



# 9. SPECIFICATIONS CONT.

VEHICLE CLASSES REQUIRED TO BE TRANSPORTED:	REQUIREMENTS OF TOWING/SALVAGING/RECOVERY VEHICLE(S)
Category 5. PLANT (MACHINERY) & HEAVY PLANT AND SPECIALISED TRUCKS	The drawing vehicle / tow truck vehicle must have capacity for GCM of at least 60 000 Kg.
HEAVY PLANT AND SPECIALISED TRUCKS	SERVICE REQUIREMENTS
<p>All vehicles typically requiring a code C license, with a GVM between 12 001kg and 50 000 Kg, Plant types include by not limited to Bulldozers, Excavators, Compactors, Fire Appliances, Front-end Loaders, .</p>	<p>There should be provision for extension air hoses should charging the broken down vehicles air system be required.</p> <p>Service Providers should be aware that recovery and salvaging of these types of vehicles may occur off the road surface and under exceptional conditions, including on uneven terrain.</p> <p>Adequate lifting/winch capacity of tow truck to be able to winch or lift a truck/plant for safe recovery or salvage out of off-road terrain/conditions e.g. landfill/mountains/beaches/rivers.</p> <p>Should the plant/truck have an automatic transmission, which could be damaged by towing with the engine not running, the Service Provider must ensure that they can recover without consequential damage, which if found, the Service Provider will be liable for.</p> <p>Possible Recovery &amp; salvaging include:</p> <p>Drawing of a truck/plant that has become stuck in different mediums e.g. soft sand/mud/rivers/canals/beaches/mountain tracks/drainage ditches can be recovered/salvaged by the use of a tow truck with adequate winching capacity or the utilisation of a crane.</p> <p>Possible towing include:</p> <ul style="list-style-type: none"> <li>Trailer or low bedding the plant/specialised trucks where direct towing is not permitted.</li> </ul> <p>The Tenderer shall ensure that all recovery and salvaging activities under this category are undertaken only after the City has approved the quotation and method statement and that all requirements of the National Road Traffic Act and applicable legislation are complied with at all times.</p> <p>Tenderer to ensure that all requirements as per the National Road traffic safety Act are adhered to while conducting the service.</p>



# 10. SPECIAL CONDITIONS

## Penalties

No.	KPI	KPI Description	Performance Standard	Non-Performance Standard	Penalty
1	Response Time	All call-outs under this Contract must be attended to as a priority. The Service Provider is required to be on site within one (1) hour of receiving a request.	1 hour	Longer than 1 hour	The financial penalty shall be 0.5% of the PO value if not met. Delays beyond the control of the Service Provider will not be considered non-performance, provided that the Service Provider promptly notifies the CCT of the delay, its cause, and provides ongoing status updates. The CCT reserves the right to request supporting evidence, which the Service Provider shall provide within a given timeframe.
2	Damage to Vehicle	The Service Provider shall exercise all reasonable care to ensure that vehicles towed under this Contract are not damaged during the course of the service.	No damage to vehicle	Any damage caused	In the event that a vehicle is damaged due to the Service Provider's negligence or failure to adhere to proper towing procedures, the Service Provider shall be liable for the full cost of repair or replacement, as determined by the City.  The City may require the Service Provider to provide a corrective action plan to prevent recurrence of such incidents. Persistent failure to safeguard vehicles may constitute a material breach of the Contract and may result in further remedial action, including suspension or termination in accordance with the General Conditions of Contract (GCC) and the City of Cape Town's SCM Policy.

3	Quotations Call-outs, Field Service Work and Invoice delivery	Call-outs and Field Service work for normal towing/salvaging/recovery quotations must be delivered (uploaded on the Fleet Vendor Management Portal) by the end of the same business day, within standard business working hours.  Special category recoveries, as well as after-hours, weekend, and public holiday quotations, must be submitted by 12:00 PM (midday) on the next business day. Should any challenges arise, the Service Provider is required to communicate these to the City	Quotations delivered to applicable departments and uploaded to the Fleet Vendor Management Portal timeously. Accurate Invoices and supporting documentation to be submitted and uploaded to within 72 hours of the completed work.	Quotations and Invoice not submitted timeously	The financial penalty shall be 0.5% of the PO value if not met.
---	---	--	--	--	---



# 10. SPECIAL CONDITIONS CONT.

## ADDITIONAL CONDITIONS OF CONTRACT

*Add the following Clause after Clause 34:*

### **35. Reporting Obligations**

35.1 The Supplier shall complete, sign and submit with each delivery note, all the documents as required in the Specifications including Monthly Project Labour Reports (Annexure B). Any failure in this regard may result in a delay in the processing of payments.

35.2 Checklists (supplied by tendering entity) will be used and signed by the relevant parties (City's and Service Provider's representatives), at each transfer of a vehicle. The Service Provider is responsible for the completion of all paperwork related to the service (including Checklists) of recoveries, towing or salvaging. This must be attached to the delivery note / copy invoice supplied to the person sending the order on completion. Under certain circumstances a traffic officer will accompany the recovered, salvaged or towed vehicle during the full duration of this trip. At times photographs may be taken at milestones in the process by the City. This will not void the need for the Checklist.

### **36. Personnel**

36.1 The service provider shall have available sufficient qualified personnel for the operation of the required tow/drawing vehicles.

- a. The driver of the towing vehicle shall have a current valid CODE EB, EC or EC1 driver's license appropriate for the vehicle being operated and be valid to drive in South Africa.
- b. The driver of the towing vehicle shall have a current valid Professional Driving Permit in terms of Section 32 NRTA 93/96 read with Regulation 115 NRTA 93/96 as specified in the Act.
- c. The driver/s shall have at least one (1) year experience in towing and recovery work.
- d. The service provider shall ensure that all drivers used on calls shall be neat, clean, uniformed, courteous, and competent in operating skills in all procedures.
- e. Service Provider's drivers/operators driver's licenses and their appropriate valid PrDP (professional driving permit)



# 10. SPECIAL CONDITIONS CONT.

---

## **37. Geographical Operational Requirements**

37.1 The service provider shall demonstrate the ability to deploy vehicles and personnel within the City of Cape Town metropole at all times, and must maintain local operational readiness sufficient to meet the prescribed response times (45 minutes daytime and 60 minutes night-time). Failure to maintain such local readiness shall constitute non-performance.

## **38. Bargaining Council Requirements**

38.1 The Contractor must, within the period stipulated by the Employer following notification of intention to award, submit valid proof of registration with and good standing in the applicable Bargaining Council for the industry, including but not limited to any other relevant Bargaining Council appropriate to the services under this Contract. Registration with a Bargaining Council shall not be required where the services relate exclusively to marine equipment workers for whom no applicable Bargaining Council exists. Such proof must remain valid for the duration of the Contract.

Failure by the Contractor to submit the required proof within the stipulated period shall constitute a breach of the conditions applicable at contract-finalisation stage and may result in the Employer withdrawing the award, declining to conclude the Contract, or invoking any other remedies available in law or under the Contract.



# QUESTIONS

---

**For Questions/queries please forward them to:**

[scm.tenders4@capetown.gov.za](mailto:scm.tenders4@capetown.gov.za)





**CITY OF CAPE TOWN  
ISIXEKO SASEKAPA  
STAD KAAPSTAD**

**Thank You**

**Making progress possible. Together.**