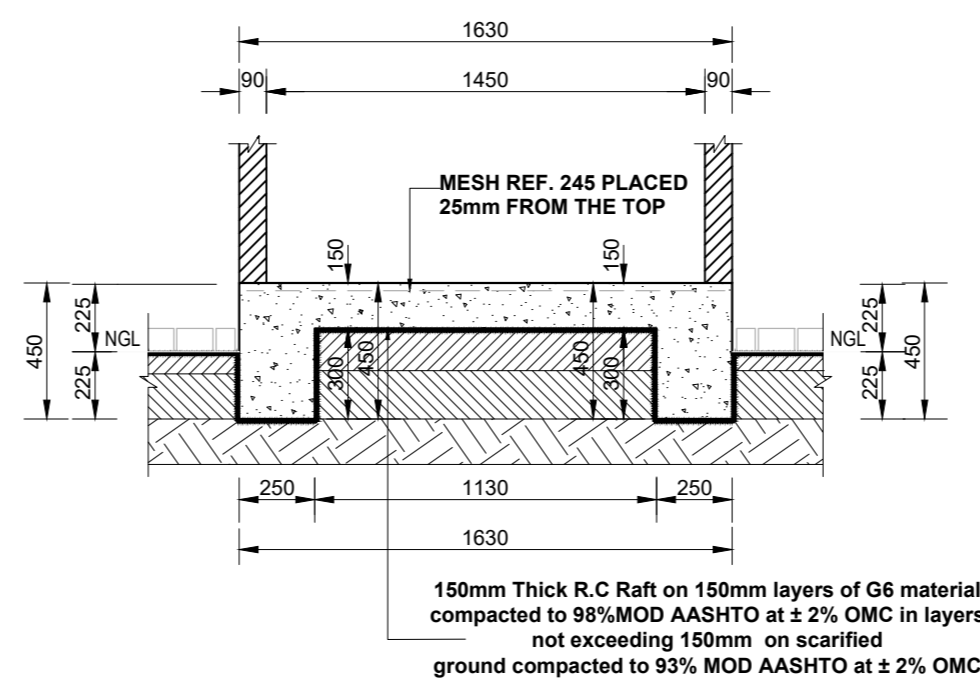




- 
- The diagram shows a cross-section of a foundation system. At the base is a layer of scarified ground, indicated by a diagonal hatching pattern. Above this is a 150mm thick R.C. Raft, shown with a stippled pattern. The raft is supported by 150mm layers of G6 material, indicated by a cross-hatching pattern. The total height of the raft and the G6 material layers is 450mm. The raft has a width of 2000mm, with 90mm overhangs on both sides. The G6 material layers are 150mm thick and are compacted to 98% MOD AASHTO at ± 2% OMC. The ground is compacted to 93% MOD AASHTO at ± 2% OMC. A mesh reference is indicated as 245 placed 25mm from the top. The diagram also shows the NGL (Natural Ground Level) and the finished ground level (FG) with a 225mm offset.
- 150mm Thick R.C. Raft on 150mm layers of G6 material compacted to 98%MOD AASHTO at  $\pm 2\%$  OMC in layers not exceeding 150mm on scarified ground compacted to 93% MOD AASHTO at  $\pm 2\%$  OMC**

**SECTION A-A**  
SCALE: 1:25



**SECTION B-B**  
SCALE: 1:25

[illegible]