

PRIVATE SPECIFICATION

Prepared for



SOUTH AFRICAN AIRWAYS

A STAR ALLIANCE MEMBER 

MEN'S GCC BLUE JACKET



Item Number: CO17

Document Number: SAA 1007

Version 04.0/April 2014

1. Scope

This specification¹ covers the material, design, cut and make of single breasted jackets for male personnel of the South African Airways.

2. Definitions and Abbreviations

For the purpose of this specification the definitions given in SANS 10371 "Terms and definitions for clothing" and the following shall apply:

acceptable: acceptable to the South African Airways

nominal: subject to the tolerances normal to good manufacturing practice

SANS: South African National Standard

3. Style

The style is as follows:

- ♦ single breasted
- ♦ three-button front fastening
- ♦ step collar and lapel
- ♦ forepart to each have a waist suppression dart
- ♦ to have side body panels
- ♦ rounded front corners
- ♦ one welted breast pocket
- ♦ two side double jetted pockets
- ♦ two double jetted inside breast pockets and a ticket pocket
- ♦ centre back seam
- ♦ two-piece sleeves with a mock vent and buttons at the cuff
- ♦ fully lined

¹ This private specification has been compiled by National Private Specifications (Pty) Ltd. privatespecs@vodamail.co.za

Doc No	Item No	Date	Version	Page	No of pages
SAA 1007	CO17	April 2014	04.0	2	23

4. Illustrations

Illustrations are not to scale and are for guidance only.

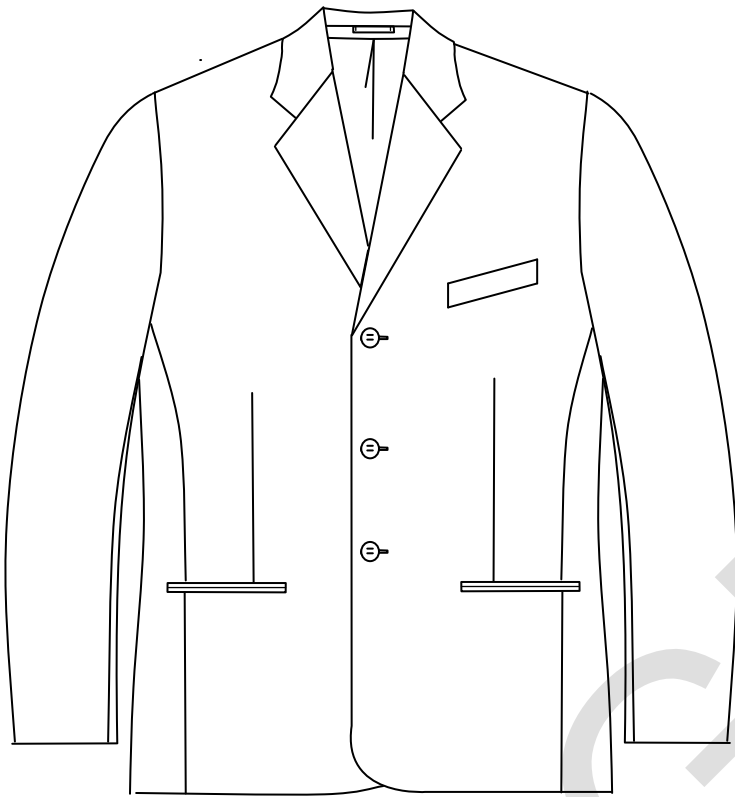


Figure 1 – Front

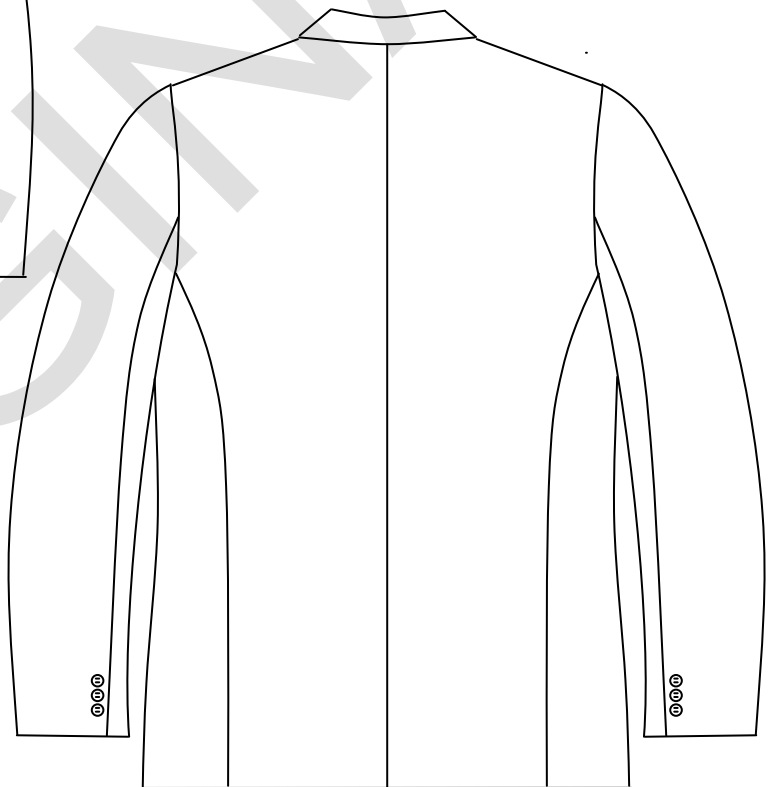


Figure 2 – Back

5. Client Furnished Materials

No materials shall be supplied by the South African Airways.

Doc No	Item No	Date	Version	Page	No of pages
SAA 1007	CO17	April 2014	04.0	3	23

6. Component Materials

The following materials shall be supplied and used by the manufacturer. Trim charts shall also be submitted by the manufacturer (see Annex A).

NOTE: All components listed below shall be manufactured in the Republic of South Africa. In instances where the raw material and/or finished components are not available in the Republic of South Africa, the onus shall be on the bidder to apply for exemption certificates from DTI. Exemption certificates, where relevant, shall be submitted together with each bid.

6.1 Outer material

- ♦ to comply with the requirements as given in table 1
- ♦ colour to be a match, in terms of SANS 10076-5, "The assessment of defects in textile piece-goods and made-up articles Part 5: Defects in woven woollen and worsted piece-goods", to Colour No. 543c-2014 "SAA Dark Navy (suiting)" of CKS 129 "Colours for textiles"
- ♦ to be treated with a fabric protector (water-repellent, oil-and-soil repellent, breathable, washable and dry-cleanable)
 - Ruco-guard®² is a typical example of a suitable product
 - manufacturer to submit a certificate of the relevant product used

6.2 Lining

6.2.1 General

- ♦ lining shall be treated with an anti-static finish
- ♦ colour to be an acceptable match to the outer material
- ♦ to comply with one of the types as given 6.2.2 and 6.2.3 (both types will be regarded as acceptable)

6.2.2 Type 1 lining

- ♦ to comply with the requirements for type L61P of SANS 1387-7 "Woven cotton and similar apparel fabrics – Part 7: Jacket linings"

6.2.3 Type 2 lining

- ♦ to comply with the same requirements as specified for Type 1, but with the following deviations:
 - weave: to be a mock-leno weave
 - air permeability: to have a minimum requirement of 130 cfm³ at 12.5 mm (0.5 in) water pressure when tested in accordance with ASTM D737-96 "Standard Test method for air permeability of textile fabric"

² Ruco-Guard® is the trade name of a product supplied by the Rudolf Group™. This information is given for the convenience of users of this private specification and does not constitute an endorsement by the South African Airways of the product named. Equivalent products may be used if they can be shown to lead to the same results.

³ cfm = cubic feet of air per minute per square foot of fabric (ft³/min/ft²)

Doc No	Item No	Date	Version	Page	No of pages
SAA 1007	CO17	April 2014	04.0	4	23

Table 1 – Outer material requirements

1	2	3
Property	Requirement	SANS number (unless otherwise indicated)
Composition, %		1833-1 and 1833-4
Polyester	55 ± 3	
New wool	43 ± 3	
Lycra®	2	
Weave	Plain	Visual examination and physical analysis
Nominal width , cm	153	82
Mass per area (free from non-fibrous material), g/m ² , min. ...	190	79
Number of threads per centimetre , min.		7211-2
Warp	18	
Weft	18	
Breaking strength , N, min.		13934-1
Warp	750	
Weft	500	
Seam strength , N, min.		5726
Parallel to warp	100	
Parallel to weft	100	
Resistance to pilling ^a , rating, min.	3,5 (slight to moderate)	6116
Dimensional changes , %, max.		
Laundering		960, Washing proc C Drying proc E
Warp and weft direction	2	
Dry-cleaning		ISO 3175-2
Warp and weft direction	2	
Non-fibrous material content , %, max.	3,5	5113
Colour fastness to:		
Washing , rating, min.		105-C10 Test B (2)
Change in colour	4	
Staining	4	
Dry cleaning		105-D01
Change in colour	4	
Staining	4	
Perspiration: pH 5,5 and 8,0 , rating, min.		105-E04
Change in colour	4	
Staining	4	
Rubbing , rating, min.		105-X12
Dry	4	
Wet	4	
Light , rating, min.	5	105-B02

^a Tested after washing in accordance with SANS 11108.

Doc No	Item No	Date	Version	Page	No of pages
SAA 1007	CO17	April 2014	04.0	5	23

6.3 Interlining

- ♦ an acceptable fusible woven or non-woven interlining (as relevant)
- ♦ to comply with the requirements of CKS 627 “Fusible interlinings”
- ♦ mass per unit area to be such that the interlining is suitable for the purpose for which it is used:
 - collar, chest-piece and foreparts, hems, shoulder straps, facing and stays
- ♦ jackets: suitable for use in garments which may be dry-cleaned
 - capable of withstanding the same washing and drying procedures as specified for the outer material

The selection of interlining of appropriate mass per unit area to be determined by consultation with the supplier of the interlining. The contractor will be held responsible for the performance of the interlining.

6.4 Shoulder pads

- ♦ flexible polyester wadding shoulder pad (used for tailored garments)
- ♦ medium height
- ♦ resistant to dry-cleaning and steam pressing

6.5 Sleeve-head roll

- ♦ acceptable wadding (glazed on both sides)
- ♦ suitable to give the desired shape at the sleeve head
- ♦ to conform to the needs of the pattern

6.6 Stay-tape

- ♦ acceptable stay-tape (or interlining, see 6.3)

6.7 Padding felt

- ♦ acceptable padding felt or fusible padding felt
- ♦ nominal mass per area 180 g/m² (min.)

6.8 Haircloth/canvas

- ♦ acceptable haircloth OR canvas suitable for use as a floating chest-piece

6.9 Undercollar material

- ♦ felt: consisting of 80 ± 2% of wool and 20 ± 2% of non-wool fibres **OR** an acceptable melton fabric
- ♦ mass per unit area of 270 g/m² (min.)
- ♦ colour to be an acceptable match to the colour of the outer material

6.10 Tape

- ♦ acceptable woven sateen tape
- ♦ of finished width 8 mm
- ♦ colour to be an acceptable match to the colour of the outer material

Doc No	Item No	Date	Version	Page	No of pages
SAA 1007	CO17	April 2014	04.0	6	23

6.11 Buttons

- ◆ four-hole plastics
- ◆ of nominal diameter 17 mm fitted on the front
- ◆ of nominal diameter 14 mm fitted on the sleeve
- ◆ to comply with the requirements of SANS 1457 "Plastics buttons"
- ◆ dope-dyed
- ◆ fully impregnated
- ◆ colour to be an acceptable match to the colour of the outer material

6.12 Threads

- ◆ to comply with relevant requirements of SANS 1362 "Sewing threads"
- ◆ colour to be an acceptable match to the colour of the outer material

Sewing thread:

- ◆ polyester-and-cotton core-spun **OR** staple polyester
- ◆ ticket No 80

7. Workmanship

The jackets shall be:

- ◆ cut and made with first-class workmanship throughout
- ◆ of uniform and acceptable make, colour and finish

Shall be free from:

- ◆ defects, that affect their appearance or may affect their serviceability (or both)
- ◆ marks and spots
- ◆ stains, incurred in the making-up

Seams and stitches shall be:

- ◆ smooth and uniform
- ◆ free from twists, pleats and puckers
- ◆ sufficiently extensible to avoid seam cracking and undue shrinkage in use

Ends of sewing shall be:

- ◆ trimmed and loose threads removed
- ◆ back-tacked if unsecured (at least 15 mm)

Points not defined in the specification that requires assessing at inspection:

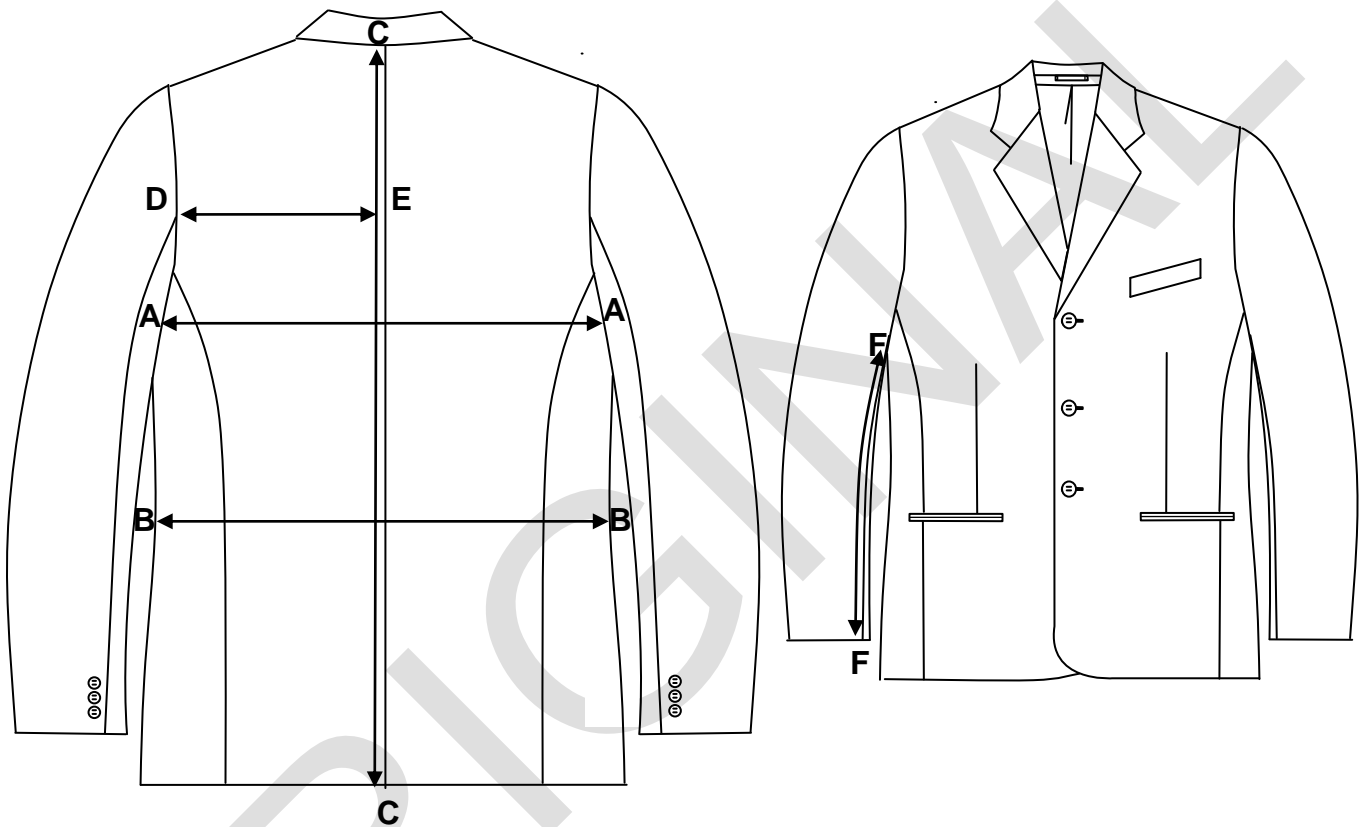
- ◆ Place the jackets on a dummy and check the following points:

Doc No	Item No	Date	Version	Page	No of pages
SAA 1007	CO17	April 2014	04.0	7	23

- Is the front and back balance correct?
- Is the appearance neat and clean?
- Does the collar fit neatly around the neck?

8. Sizes and dimensions

Jacket measurements



MEASURING POINT		DESCRIPTION
A – A	Chest circumference	Measure across the width of the garment at the base of the scye, with buttons fastened and garment spread completely flat, and multiply by two.
B – B	Waist circumference	Measure across the width of the garment, at the waist level, the narrowest part of the body, with buttons fastened and multiply by two.
C – C	Back length	Measure from the centre back neck seam to the bottom edge of the garment.
D – E	Half back width	Measure across the width of the back, at the midpoint of the scye, from the centre back seam to the one sleeve opening.
F – F	Sleeve length	Measure along the FOREARM SEAM from the armhole to the outer edge of the cuff.
C – E	Depth of scye	Measure from the centre back collar seam to a point level with the base of the scye.

Doc No	Item No	Date	Version	Page	No of pages
SAA 1007	CO17	April 2014	04.0	8	23

Table 2 – Size range: Regular Short

1	2	3	4	5	6	7	8
Size design- nation	To fit chest in cm	Nominal finished garment measurement in cm					
		Circumference		Back length	Half Back width	Sleeve length	Depth of scye ²
		Chest	Waist				
32S	82	93	84	73	21.5	39.5	27.5
34S	87	98	89	74	22	40	28
36S	92	103	94	75	22.5	40.5	28.5
38S	97	108	99	76	23	41	29
40S	102	113	104	77	23.5	41.5	29.5
42S	107	118	109	78	24	42	30
44S	112	123	114	79	24.5	42.5	30.5
46S	117	128	119	80	25	43	31
48S	122	133	124	81	25.5	43.5	31.5
50S	127	138	129	82	26	44	32
52S	132	143	134	83	26.5	44.5	32.5
¹ Based on the figure type (REGULAR), Height (SHORT) and chest circumference of the wearer. Size designation given in inches, but column 2 given in centimetres. ² To serve as guideline. Care must be taken with this measurement , ensuring that the bicep measurements are adequate and comfortable to the wearer.							

Doc No	Item No	Date	Version	Page	No of pages
SAA 1007	CO17	April 2014	04.0	9	23

Table 3 – Size range: Regular Regular

1	2	3	4	5	6	7	8
Size design- nation	To fit chest in cm	Nominal finished garment measurement in cm					
		Circumference		Back length	Half Back width	Sleeve length	Depth of scye ²
		Chest	Waist				
32R	82	93	84	75	21.5	42	27.5
34R	87	98	89	76	22	42.5	28
36R	92	103	94	77	22.5	43	28.5
38R	97	108	99	78	23	43.5	29
40R	102	113	104	79	23.5	44	29.5
42R	107	118	109	80	24	44.5	30
44R	112	123	114	81	24.5	45	30.5
46R	117	128	119	82	25	45.5	31
48R	122	133	124	83	25.5	46	31.5
50R	127	138	129	84	26	46.6	32
52R	132	143	134	85	26.5	47	32.5
¹ Based on the figure type (REGULAR), Height (REGULAR) and chest circumference of the wearer. Size designation given in inches, but column 2 given in centimetres. ² To serve as guideline. Care must be taken with this measurement, ensuring that the bicep measurements are adequate and comfortable to the wearer.							

Doc No	Item No	Date	Version	Page	No of pages
SAA 1007	CO17	April 2014	04.0	10	23

Table 4 – Size range: Regular Long

1	2	3	4	5	6	7	8
Size design- nation	To fit chest in cm	Nominal finished garment measurement in cm					
		Circumference		Back length	Half Back width	Sleeve length	Depth of scye ²
		Chest	Waist				
32L	82	93	84	77	21.5	44.5	27.5
34L	87	98	89	78	22	45	28
36L	92	103	94	79	22.5	45.5	28.5
38L	97	108	99	80	23	46	29
40L	102	113	104	81	23.5	46.5	29.5
42L	107	118	109	82	24	47	30
44L	112	123	114	83	24.5	47.5	30.5
46L	117	128	119	84	25	48	31
48L	122	133	124	85	25.5	48.5	31.5
50L	127	138	129	86	26	49	32
52L	132	143	134	87	26.5	49.5	32.5

¹ Based on the figure type (REGULAR), Height (LONG) and chest circumference of the wearer. Size designation given in inches, but column 2 given in centimetres.

² To serve as guideline. Care must be taken with this measurement, ensuring that the bicep measurements are adequate and comfortable to the wearer.

9. Make

Illustrations are not to scale and are for guidance only, and unless inconsistent with the text, all measurements are nominal.

9.1 Foreparts

Foreparts shall:

- ◆ be single breasted
- ◆ each have a single front panel with a waist suppression dart
- ◆ each have a double jetted pocket
- ◆ left forepart shall be fitted with:
 - a slanted welt pocket
- ◆ each have a facing
- ◆ be fully interlined with interlining to the side body panel seam
- ◆ be reinforced with a chest piece of interlining OR an acceptable haircloth fabric at the shoulder and chest area
 - to be backed with padding felt (applicable to both options)
- ◆ fitted with staytape or interlining along the front edges
- ◆ each have a lapel
 - lapel step to be of finished width 40 mm
 - be stayed with staytape or interlining along the breakline and edges of the lapel
 - breakpoint of lapel to be positioned 30 mm above the base of the scye

Doc No	Item No	Date	Version	Page	No of pages
SAA 1007	CO17	April 2014	04.0	11	23

- of finished width 90 mm(max.)
 - measured horizontally from the breakline (roll) of the lapel to the lapel point
- ♦ be such that the left forepart edge has three buttonholes
- ♦ be such that the right forepart edge has three buttons
- ♦ have rounded bottom corners
- ♦ be fully lined with lining

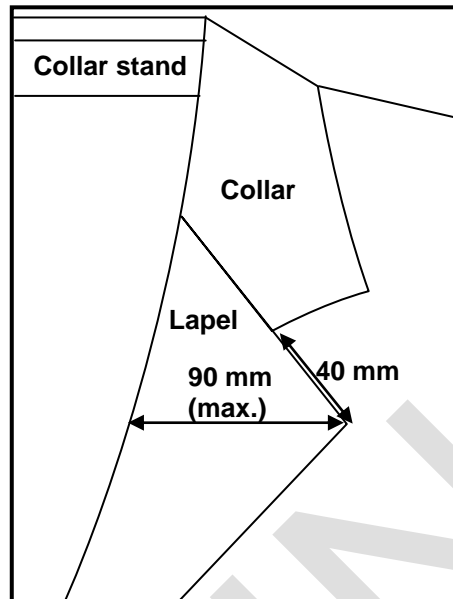


Figure 3 – Lapel

9.2 Side body panel

- ♦ shaped and shall extend from the front towards the back
- ♦ fully lined with lining

9.3 Back

- ♦ have a shaped centre back seam and side body panels (see 9.2)
- ♦ be fully lined with lining

9.4 Facings and linings

Facings:

- ♦ each forepart shall have a facing of outer material and interlined with interlining
 - to be a continuation of the collar seam
 - shaped to approximately 10 cm at the bottom (before the rounding)

Lining:

- ♦ to be cut and made in such a way that it conforms to the shape of the jacket and the facing
- ♦ each forepart lining shall have a double jetted breast pocket
- ♦ left inside lining shall be fitted with a ticket pocket
- ♦ to have a pleat at the centre back seam
 - of depth 20 mm
 - to extend from the neck to the waist
- ♦ be sewn to the facings, neck, cuffs, vent and bottom hem
- ♦ to have a pleat along the bottom hem of the jacket

Doc No	Item No	Date	Version	Page	No of pages
SAA 1007	CO17	April 2014	04.0	12	23

Facing-to-lining seam:

- ♦ to be smooth and without undue fullness

9.5 Pockets

Each jacket shall have:

- a) two side pockets
- b) one outside welted breast pocket
- c) two inside breast pockets
- d) one inside ticket pocket

a) Side pockets:

- ♦ be double jetted
- ♦ each jet of finished width 5 mm
- ♦ be of finished length:
 - 15.5 cm on sizes 42/107 and smaller
 - 16.5 cm on sizes 44/112 and larger
- ♦ be positioned with the front edge of the pocket 15 mm forward of the waist dart
- ♦ positioned at the base of the waist dart, and approximately 10 cm below the natural waist

Pocket bags

- ♦ swing type that shall not be caught in with the seams
- ♦ of finished width 16 cm
- ♦ of finished depth 18 cm (measured from top edge of lower jet)
- ♦ to be of lining

b) Welted pockets:

- ♦ slanted
- ♦ positioned at the left chest area
- ♦ of double folded outer material
- ♦ interlined with interlining
- ♦ of finished length 11 cm
- ♦ of finished depth 25 securely tacked at the outer edges
- ♦ positioned approximately 70 mm above the base of the scye

Pocket bags:

- ♦ of lining
- ♦ swing type
- ♦ of finished width 13 cm
- ♦ of finished depth 14 cm (measured from top edge of welt)

c) Inside breast pockets:

- ♦ be positioned on left and right inside lining
- ♦ have a double jetted pocket mouth
 - to be of outer material
 - of finished length 13 cm
 - positioned 40 mm below the base of the scye, centred in the front lining panel
 - vertically bar-tacked at the outer edges

Doc No	Item No	Date	Version	Page	No of pages
SAA 1007	CO17	April 2014	04.0	13	23

Pocket bags

- ♦ swing type and of lining
- ♦ shall not be caught in with the seams
- ♦ of finished width 12 cm (min)
- ♦ of finished depth 16 cm (measured below the mouth opening)

d) Inside ticket pocket:

- ♦ be positioned in the left inside lining
- ♦ positioned 10 mm from the facing-to-lining seam
- ♦ positioned 19 cm below the top inside breast pocket
- ♦ have a double jetted pocket mouth
 - to be of outer material
 - of finished length 75 mm
 - vertically bar-tacked at the outer edges

Pocket bags

- ♦ swing type and of lining
- ♦ shall not be caught in with the seams
- ♦ of finished width 95 mm (min)
- ♦ of finished depth 12 cm (measured below the mouth opening)

9.6 Collar

Collar shall:

- ♦ be a two-piece step collar
- ♦ top collar to be of outer material
 - have a separate stand and fall
 - stand to be of finished depth 20 mm
 - fall to be of finished depth 50 mm at centre back
- ♦ be such that the top collar is lined with undercollar material and interlined with interlining
 - cut on the bias (refers to under-collar material and interlining)
- ♦ have collar steps of 40 mm

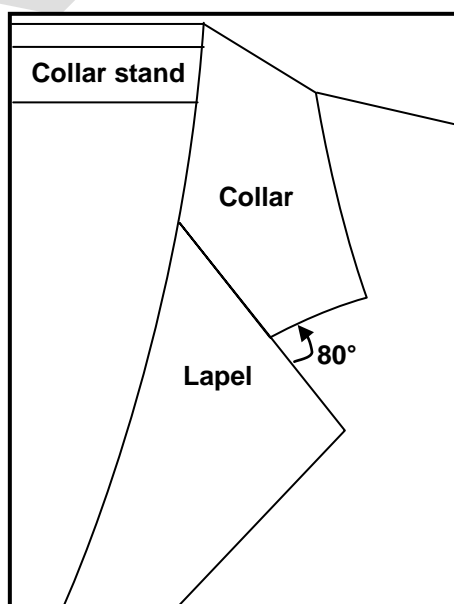


Figure 4 – Collar angle

Doc No	Item No	Date	Version	Page	No of pages
SAA 1007	CO17	April 2014	04.0	14	23

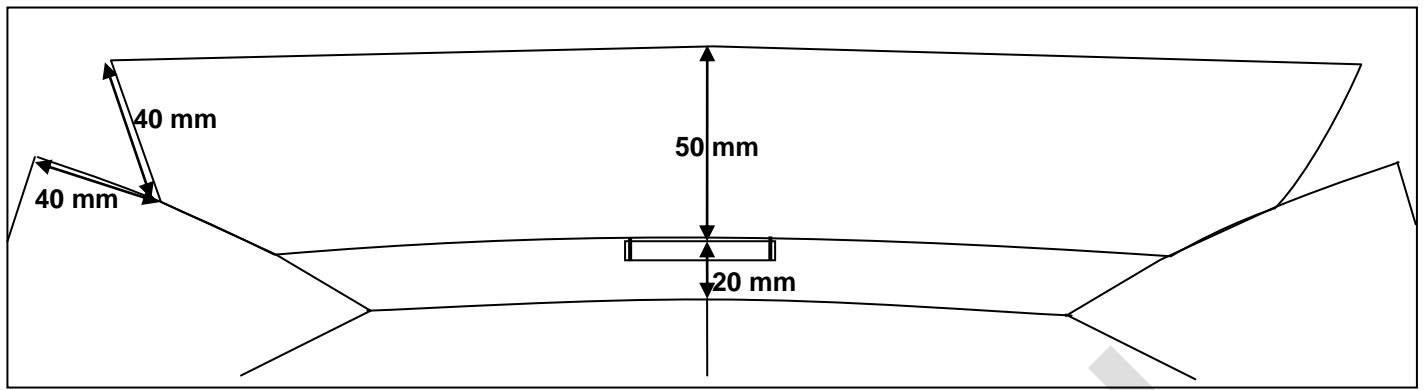


Figure 5 – Top collar

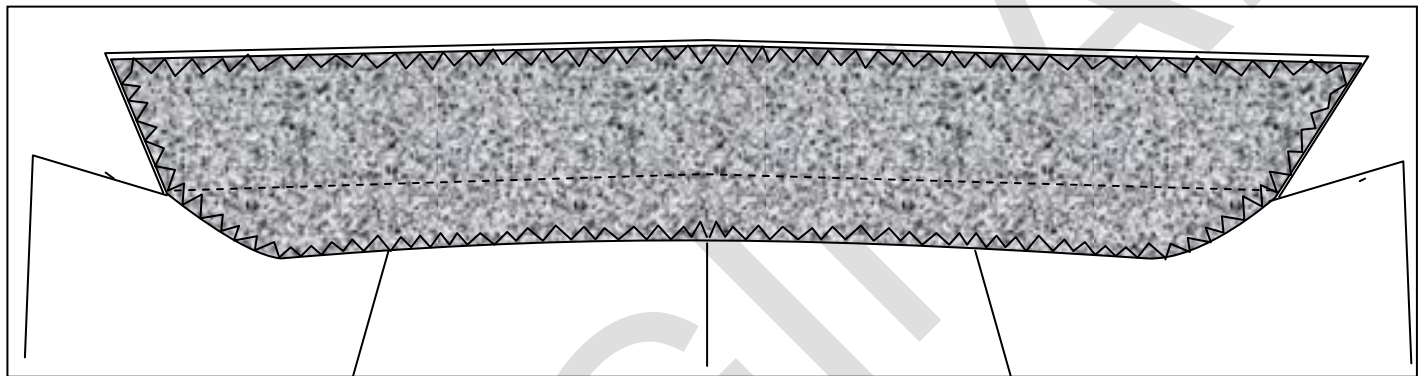


Figure 6 – Under collar

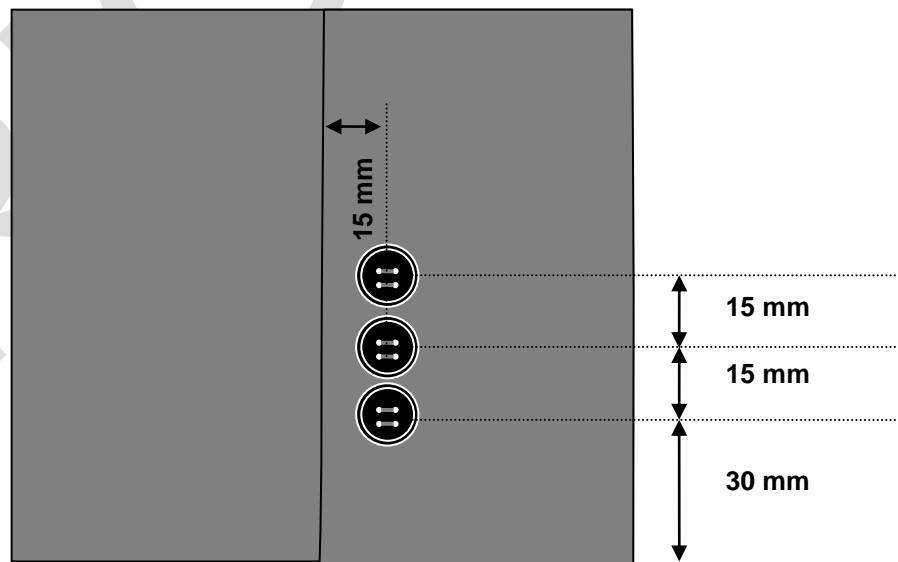


Figure 7 – Right cuff buttonholes and buttons

9.7 Sleeves

- ◆ be long, two-piece
- ◆ be set-in type and fitted with a shoulder pad and sleeve-head roll at the sleeve head
- ◆ be stayed at the base of the scye
- ◆ be fully lined

Doc No	Item No	Date	Version	Page	No of pages
SAA 1007	CO17	April 2014	04.0	15	23

- ♦ bicep circumference on size 42 to measure 44 cm and graded on the other sizes (when measured from the base of the scye, perpendicular to the overarm, and multiplied by two)
- ♦ be such that the cuffs shall be interlined with interlining
 - cuff to have a hem of finished depth 25 mm
- ♦ have a mock vent along the hind-arm seam at the cuff (see figure 7)
 - of finished length 90 mm
 - to be fitted with three 14 mm buttons
 - positioned as given in figure 7

9.8 Buttonholes and buttons

Left forepart shall:

- ♦ be fitted with three buttonholes at the front edge
 - jacket type buttonhole
 - neatly made, gimped and barred
 - length to be such to acceptably accommodate a button of nominal diameter 17 mm
 - horizontal
 - positioned with the eye of the buttonhole 15 mm from the front edge
 - the first buttonhole shall be positioned 20 mm below the breakpoint of the lapel
 - the second and third buttonholes to be equidistantly spaced at 10 -12 cm intervals (depending on the size)

Right forepart shall:

- ♦ be fitted with three buttons
 - in corresponding positions to the buttonholes on the left forepart

Cuffs shall:

- ♦ each be fitted with three 14 mm buttons (see 9.7)

Spare buttons:

- ♦ one of each size button shall be placed in a plastics envelope and attached to the swing ticket

9.9 Hanger

The hanger to be:

- ♦ of an acceptable sateen tape or double folded lining
- ♦ of finished length 70 mm
- ♦ of finished width 6 - 8 mm
- ♦ centrally secured to the collar stand at the back neck on the inside of the jacket

9.10 Bottom hems

The bottom hem of the jacket to be:

- ♦ of finished width 25 mm
- ♦ interlined with interlining
- ♦ turned in and sewn to the lining

Doc No	Item No	Date	Version	Page	No of pages
SAA 1007	CO17	April 2014	04.0	16	23

10. Stitches, Seams and Stitchings

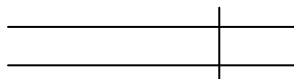
10.1 Stitches

main seaming: single needle lock stitch

10.2 Seams

Seams to be at least 15 mm wide (unless otherwise stated):

Body and sleeve seams: seam type SSa and pressed open



Superimpose two or more plies of material and seam with one row of stitches positioned at the specific distance(s) from the aligned edges.

Front edges and attachment of lining to hem: seam type SSe-1 (amended)



Form seam Type SSa-1, using two plies of material. Then turn back each ply at the seam and seam through the turned edges with the appropriate number of rows of stitches.

10.3 Number of stitches

The determination of sewing stitches per unit length will be done in accordance with SANS 5278 "Sewing stitches per unit length"

Seaming: 40 ± 4 per 10 cm

Buttonholes: 12 ± 1 per 1 cm

Button: 16 ± 1 per button

11. Garment labels

NOTE: Tender samples shall be fitted with a printed label displaying the manufacturer's name or trade mark and size.

11.1 Label identification

Each garment shall be fitted with the labels as given in table 5:

Table 5 – Label identification

Type		Requirements
1.	a woven logo jacquard label	See 11.2
2.	a woven jacquard size label	See 11.3
3.	a garment specific printed woven fabric label*	See 11.4
4.	a care-label*	See 11.5
5.	a paperboard swing tag	See 11.6

*These two labels may be separate labels or a single loop label.

Doc No	Item No	Date	Version	Page	No of pages
SAA 1007	CO17	April 2014	04.0	17	23

11.2 Jacquard logo label

Each label shall:

- ♦ be a woven jacquard label
- ♦ edges to be properly finished to prevent fraying
- ♦ information to be in legible and indelible block letters of height at least 3 mm
- ♦ permanently secured and sewn to lining below the left inside breast pocket mouth
- ♦ be such that it shall outlast the garment
- ♦ include the following information:
 - the manufacturer's name or trade mark or both
 - the registered full-colour SAA logo at top of label (see figure below)



11.3 Jacquard size label

Each label shall:

- ♦ be a woven jacquard loop label
- ♦ edges to be properly finished to prevent fraying
- ♦ information to be in legible and indelible block letters of height at least 3 mm
- ♦ sewn together with the side edge of the jacquard logo label
- ♦ be such that it shall outlast the garment

11.4 Printed garment labels

Each label shall:

- ♦ be white woven rayon label that is printed
- ♦ comply with SANS 1309 "Printed labels for textiles"
 - information to be in legible and indelible block letters of height at least 3 mm
- ♦ permanently secured and sewn to the back facing
- ♦ be such that they outlast the garments (including the markings)
- ♦ include the following information:
 - the item number
 - order number
 - the year and month of manufacture
 - the VAT no of the contractor
 - the country of origin, i.e. "Made in the RSA"

11.5 Printed care-labelling

Each label shall:

- ♦ be white woven rayon label that is printed
- ♦ comply with SANS 1309 "Printed labels for textiles"
 - information to be in legible and indelible block letters of height at least 3 mm
- ♦ permanently secured to the side seam
- ♦ be such that they outlast the garments (including the markings)
- ♦ to provide appropriate care instructions (in accordance with SANS 10011 "Care-labelling of textile piece-goods, textile articles and clothing") in words and symbols

Doc No	Item No	Date	Version	Page	No of pages
SAA 1007	CO17	April 2014	04.0	18	23

- ♦ provide the fibre composition of the fabric in accordance with the requirements of SANS 10235 “Fibre content labelling of textiles and textile products”

11.6 Printed swing tags

Each swing tag shall:

- ♦ be a white cardboard printed label
- ♦ information to be in legible and indelible block letters of height at least 3 mm
- ♦ include the following information:
 - the size designation
 - the item number
 - the item description
 - the month and year of manufacture
 - the order number

12. Packaging and marking of packaging

12.1 Packing

12.1.1 The jackets shall be:

- ♦ delivered in a pressed and commercially dry condition
- ♦ so packed that they will not be damaged in transit or in storage
- ♦ individually placed on a hanger and packed in a plastics envelope of suitable size and shape
- ♦ unless otherwise specified in the order or contract, acceptably packed for transportation in bulk containers

12.1.2 Jackets:

- ♦ of the same size designation to be packed together in a bulk container (unless quantities ordered are such that packing together of the same size only is not justified)
- ♦ of different size designations may also be packed together to accommodate the last part of an order or contract

12.2 Marking

12.2.1 Plastics envelopes

Each envelope to be clearly marked with the following information:

- ♦ the item number
- ♦ the item description
- ♦ size designation
- ♦ the order number
- ♦ month and year of manufacture

12.2.2 Bulk containers

Each bulk container shall have a label securely attached to the outside. This label shall be visible when the containers are stacked and shall provide the information in legible and indelible markings as follows:

- ♦ the manufacturer's name or trade mark or both
- ♦ the order number or contract number
- ♦ the item description
- ♦ the item number
- ♦ the size designation
- ♦ the quantity of the item
- ♦ the **month and year** of manufacture

Doc No	Item No	Date	Version	Page	No of pages
SAA 1007	CO17	April 2014	04.0	19	23

- ◆ the order number
- ◆ the box number, e.g. "1 of 5"
- ◆ the total mass of the packed container
- ◆ the Inspection Certificate Number

12.3 Additional marking

When so required by the South African Airways, jackets, plastics envelopes or containers (or any combination of these) to bear information additional to that specified above.

13. Normative References

The following documents contain provisions which, through reference in this text, constitute provisions of this specification. All documents are subject to revision and, since any reference to a document is deemed to be a reference to the latest edition of that document, parties to agreements based on this specification are encouraged to take steps to ensure the use of the most recent editions of the documents indicated below. Information on currently valid national, international and CKS documents may be obtained from the South African Bureau of Standards *.

ASTM D737-96, *Standard Test method for air permeability of textile fabrics.*

CKS 627, *Fusible interlinings.*

ISO 3175-2, *Textiles - Professional care, drycleaning and wetcleaning of fabrics and garments -- Part 2: Procedure for testing performance when cleaning and finishing using tetrachloroethene.*

SANS 79, *Textiles – Mass per unit area of conditioned fabrics.*

SANS 82, *Width of a textile fabric in a piece or roll.*

SANS 105-B02/ISO 105-B02, *Textiles – Tests for colour fastness – Part B02: Colour fastness to artificial light: Xenon arc fading lamp.*

SANS 105-C10/ISO 105-C10, *Textiles - Tests for colour fastness Part C10: Colour fastness to washing with soap or soap and soda.*

SANS 105-D01, *Textiles - Tests for colour fastness Part D01: Colour fastness to dry cleaning.*

SANS 105-E04/ISO 105-E04, *Textiles – Tests for colour fastness – Part E04: Colour fastness to perspiration.*

SANS 105-X12, *Textiles - Tests for colour fastness Part X12: Colour fastness to rubbing.*

SANS 960, *Textiles - Dimensional stability during washing and drying procedures.*

SANS 1309, *Printed labels for textiles.*

SANS 1362, *Sewing threads.*

SANS 1387-7, *Woven cotton and similar apparel fabrics – Part 7: Jacket linings.*

SANS 1387-10, *Woven cotton and similar apparel fabrics – Part 10: Pocketing.*

SANS 1457, *Plastics buttons.*

SANS 1833-1, *Textiles - Quantitative chemical analysis Part 1: General principles of testing.*

SANS 1833-4, *Textiles - Quantitative chemical analysis Part 4: Mixtures of certain protein and certain other fibres (method using hypochlorite).*

SANS 5113, *Non-fibrous material content of wool.*

* **South African Bureau of Standards: Tel. +27 (0) 12 4287911**

Doc No	Item No	Date	Version	Page	No of pages
SAA 1007	CO17	April 2014	04.0	20	23

SANS 5726, *Seaming properties of woven textile fabrics.*

SANS 6116, *Resistance of textile fabrics to pilling and fuzzing (Random tumble method).*

SANS 7211-2, *Textiles - Woven fabrics - Construction - Methods of analysis Part 2: Determination of number of threads per unit length.*

SANS 10011, *Care-labelling of textile piece-goods, textile articles and clothing.*

SANS 10076-5, *The assessment of defects in textile piece-goods and made-up articles Part 5: Defects in woven woollen and worsted piece-goods.*

SANS 10235, *Fibre-content labelling of textiles and textile products.*

SANS 10371, *Terms and definitions for clothing.*

SANS 11108, *Washing pretreatment of textile fabrics.*

SANS 13934-1/ISO 13934-1, *Tensile properties of fabrics, Part 1: Determination of maximum force and elongation at maximum force using the strip method.*

Doc No	Item No	Date	Version	Page	No of pages
SAA 1007	CO17	April 2014	04.0	21	23

ANNEX A

(Normative)

Special conditions of tender

A-1 GENERAL

A-1.1 Unless otherwise stated, the South African Bureau of Standards shall be the inspecting authority.

Any applications for deviations from drawings or the specification, or any laid down process, treatment or procedures as set out in this specification, must be made to the SA Airways and verified by the SABS⁴. All applications must be submitted in writing.

A-1.2 Three pre-production sample jackets in different size designations, shall have been inspected, tested and approved by the inspecting authority before bulk production is commenced. Each one of these samples shall be accompanied by a trim chart containing a sample of each component material (as given in 6) and the relevant certificates. It shall be the duty of the manufacturer to give adequate notice to the inspecting authority of the availability of these samples.

A-1.3 The jackets shall be subject to inspection during the course of manufacture. The inspector shall, during normal working hours, be given all reasonable facilities for carrying out his duties and shall have the right of entry into the contractor's factory and the factory or works of any subcontractor where work on jackets supplied to this specification may be in progress

A-1.4 The contractor shall inspect the finished jackets for compliance with the specification before submitting them to the inspecting authority for final inspection.

A-1.5 Before acceptance, the jackets shall have been inspected and tested by the inspecting authority and found to comply with the requirements of the specification.

A-2 DOCUMENTATION

One container of each consignment shall be marked "DOCUMENTS" and in addition to the jackets, shall contain the following:

- a) The packaging slip or delivery note;
- b) where applicable the inspection certificate(s);
- c) a copy of the invoice containing the following information:
 - the order number
 - the financial authority number
 - a full description of the consignment, i.e. Item Number, quantity, etc

⁴ SABS Inspection Authority: (Tel) 012 4287371.

Doc No	Item No	Date	Version	Page	No of pages
SAA 1007	CO17	April 2014	04.0	22	23

ANNEX B
(Normative)
CKS 129 Colours

Due to the fact that colours can change over a period of time, any colour standard which has been registered for a period of SEVEN YEARS or more shall be considered obsolete. These standards shall then be allocated an archived status (as opposed to current status) and re-registration shall be required.

A. The following scenarios require a submission of three metres of fabric from the successful tenderer:

1. A colour standard is archived.
2. First time registration is required (CKS 129 colour number does not exist).
3. Colour swatch stock at the SABS is no longer available.

B. Requirements for the submission of fabric as identified in A:

1. The colour shall be as agreed upon between the South African Airways and the successful bidder.
2. The fabric shall be used to make new colour swatches which shall be the responsibility of the SABS.
3. The cost of the three metres of fabric shall be incorporated in the relevant bid submission.

HISTORY SHEET				
VERSION	DATE	AMENDMENTS/HISTORY	CHECKED	
			NAME	INIT.
001	March 2010	First release		
03.0	March 2014	Align spec with new sample Change outer material Change sleeve length, depth of scye, back width Change measuring point of sleeve Change length of side pockets		

Doc No	Item No	Date	Version	Page	No of pages
SAA 1007	CO17	April 2014	04.0	23	23