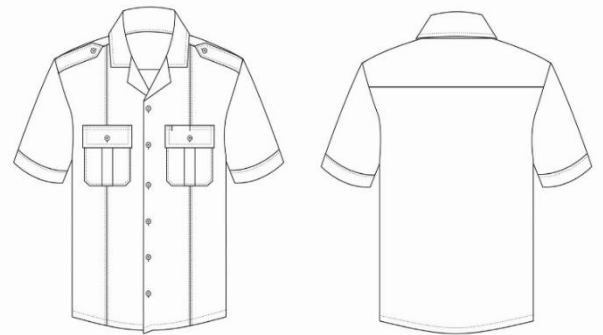




## SPECIFICATION / SCOPE OF WORK

<b>DEPARTMENT</b>	PROTECTION SERVICES
<b>DATE SUBMITTED</b>	25 May 2026

### COMBAT SHIRTS: DETAILED SKETCH OF GARMENT – FRONT & BACK VIEW



#### ITEM DESCRIPTION:

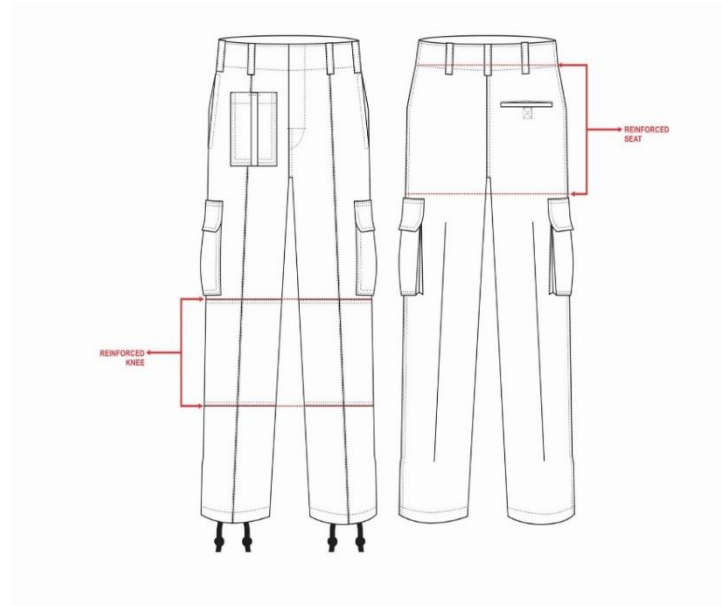
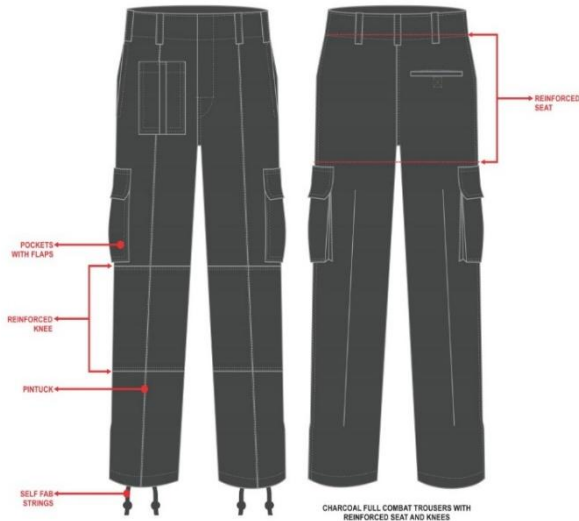
- Glad neck (open neck with step collar), short sleeve shirt – 3 cm cuff (French)
- 6 button front fastening, no placket
- 2 x breast pockets with pleat – envelope style pocket flaps with central button fastening & Velcro
- Straight bottom hem
- 2 x back darts, double yoke,
- 2 x epaulettes with mitred points - button fastening to be placed 5 mm forward of the back yoke front collar seam
- Front pin tucks to be inserted 7 cm from the hip and to continue down to the hem

#### OUTER MATERIAL:

- Quality: pc 74 micron as per SANS 1387 AND SANS 1362
- Description: polyester/cotton square weave
- Composition: 50% poly/50% cotton
- Weight: 220 g/m<sup>2</sup>
- Colour: Navy Blue



## COMBAT TROUSER: DETAILED SKETCH OF GARMENT – FRONT & BACK VIEW



### ITEM DESCRIPTION:

- Flat front with 5 cm wide waistband, 2 buttons fastening with zip fly, 7 x belt loops – 8 cm in width
- Double seat & double knee (reinforced)
- Patch pocket on RHS as worn – 12 cm wide x 13 cm in depth with centralised Velcro fastening
- 2 x straight side pockets, 1 x field dressing pocket on RHS back as worn with Velcro fastening
- 2 x thigh pockets on leg – bellow style 20 cm wide x 19 cm in depth, pleat in the center of the pocket, pocket flap to be mitred with Velcro fastening: 1 x hip pocket with Velcro closure
- Plain bottoms with drawstring in hem
- Stitched in the seam down front & back of trousers – to start 18 cm down from below waistband

### OUTER MATERIAL:

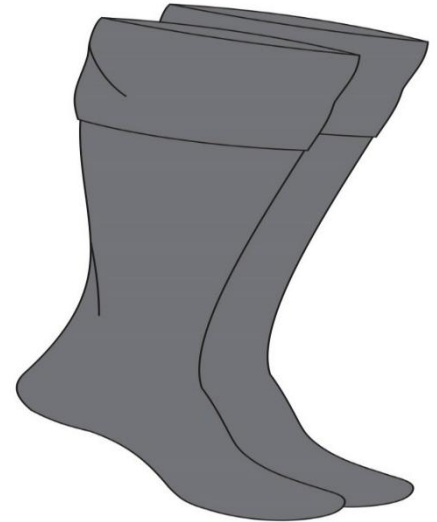
- Quality: pc 74 micron as per SANS 1387 AND SANS 1362
- Description: polyester/cotton square weave
- Composition: 50% poly/50% cotton
- Weight: 220 g/m<sup>2</sup>
- Colour: Blue



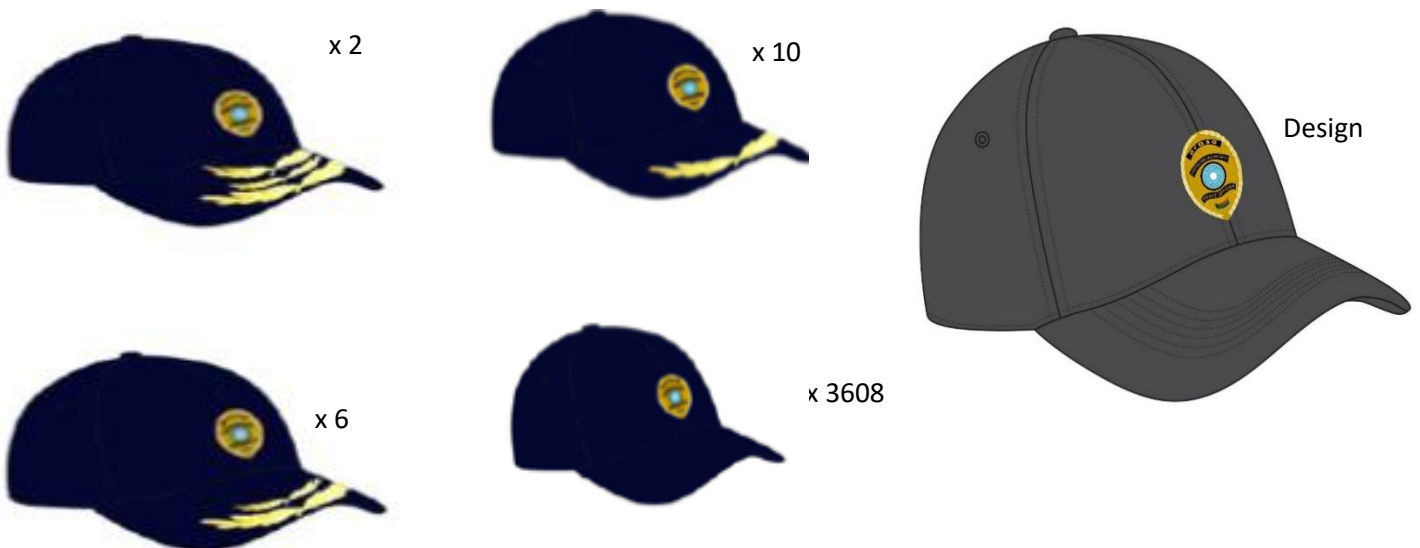
**SOCKS: DETAILED SKETCH AND PICTURE OF SOCKS**

**ITEM DESCRIPTION:**

- A half-hose design consisting of:
  - Ribbed top supported by elastic splicing
  - Plain-knitted leg and instep
  - Plain-knitted heel, sole and toe
- Colour: Navy Blue



**CAPS: DETAILED SKETCH AND PICTURE OF CAPS**



**ITEM DESCRIPTION:**

- 6 panel peaked cap
- Dome shaped, eyelets
- Adjustable Velcro fastening at the back
- Covered peak
- Cap badge to be stitched onto front 2 x panels
- Colour: Navy Blue