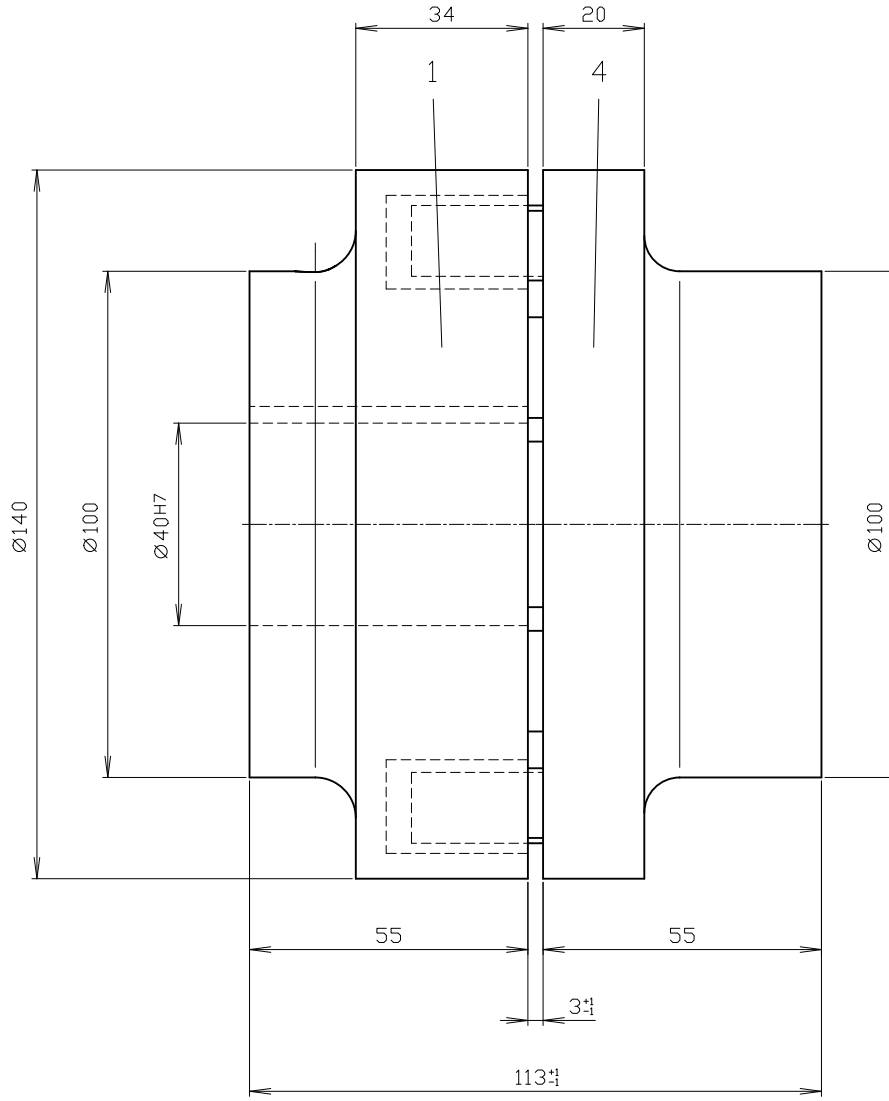


MLFB(code)
MLFB(options)
MLFB(plaintext)

2LC0100-6AA91-0AA0
LOW



Connection left: Part 1
parallel keyway acc. to DIN 6885-1 (JS9); one parallel keyway

Connection right: Part 4
without bore

The purchaser is responsible for the provision of guards to prevent accidental contact with rotating parts!