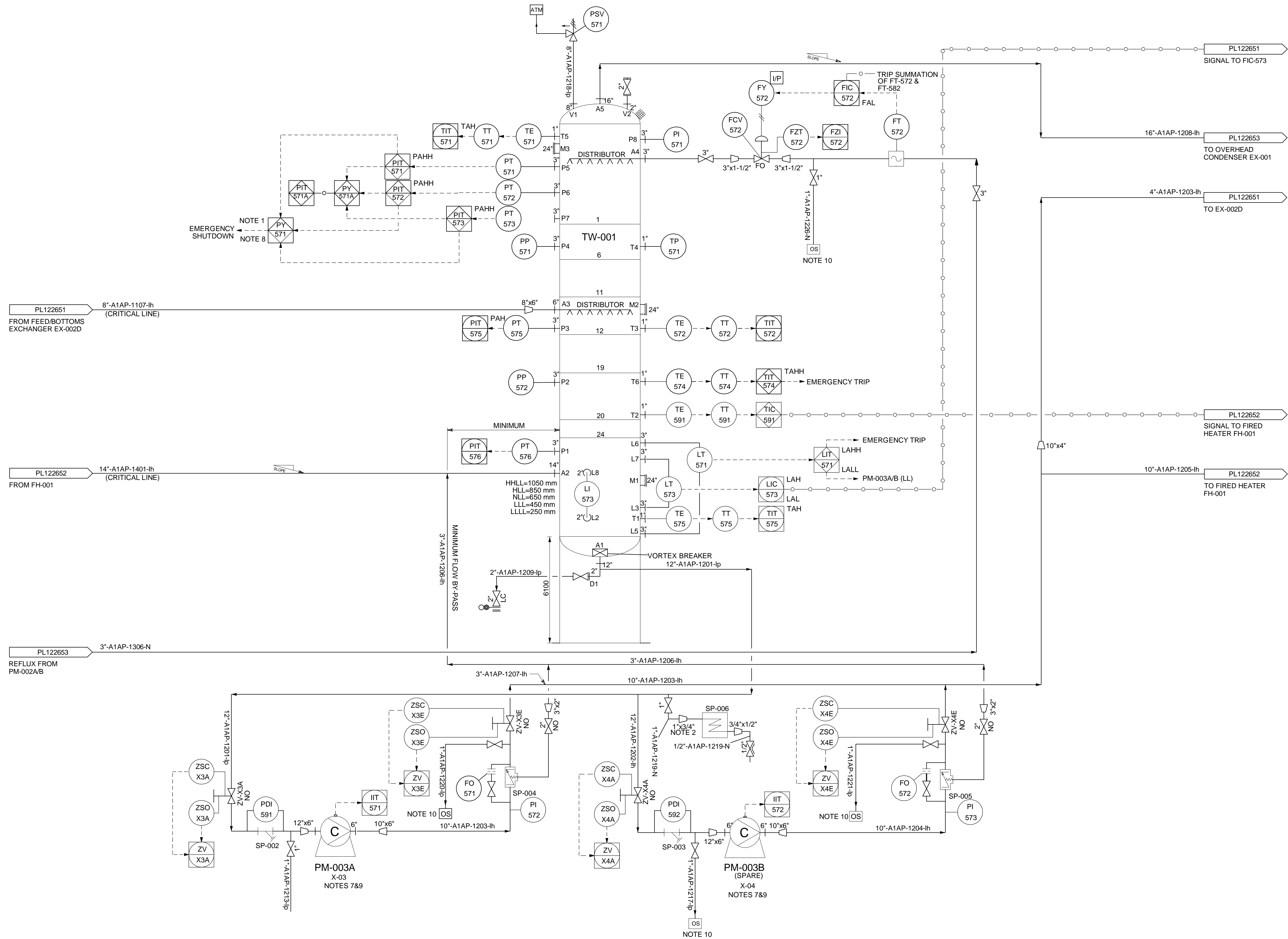


TW-001
DISTILLATION COLUMN
Size Dia.(I.D.) x Length: 2000 mm x 18500 mm
Design Press. x Temp. (min/max): -85.0 kPa-g/248.7 kPa-g x 0 C/325 C
Operating Press. x Temp. (min/max): 110.0 kPa-g/18.7 kPa-g x 134 C/293 C
Insulation Type / Thickness: lh /

PM-003A
REBOILER/BOTTOMS PUMP
Specific Gravity at Pumping Temperature: 0.631
Design Differential: 72.1 m
Design Capacity: 286.1 m³/hr
Insulation Type / Thickness: lh /

PM-003B
REBOILER/BOTTOMS PUMP
Specific Gravity at Pumping Temperature: 0.631
Design Differential: 72.1 m
Design Capacity: 286.1 m³/hr
Insulation Type / Thickness: lh /



NOTES

1. PRESSURE INDICATORS TO BE USED FOR EMERGENCY SHUTDOWN UTILISING A 2/3 VOTING SYSTEM (HIGH PRESSURE).
2. SAMPLE CONNECTION POINT. SAMPLE COOLER TO BE FILLED WITH POTABLE WATER (MANUAL).
3. DELETED
4. SEE P&ID 25913-8820-25-1001 FOR PUMP HOOK-UP DETAILS.
5. SEE P&ID 25913-8820-25-1002 FOR PUMP MOTOR INSTRUMENTS PCS DETAILS
6. DELETED
7. THE TAG PREFIXED WITH PM REFERS TO THE PUMP WHILE THE TAG PREFIXED WITH X REFERS TO THE ASSOCIATED MOTOR.
8. ES-571 CAN BE USED FOR EMERGENCY SHUTDOWN OF ENTIRE PLANT
9. PUMP FLOW MONITORING OBTAINED VIA FI-574 (SUMMATION OF FIC-591 & FIC-573).
10. TO BE DRAINED TO PORTABLE DRUM FOR MAINTENANCE.

REVISIONS					DESCRIPTION
REV	BY	CHK	APP	DATE	
A	A.Z.	T.N.	Z.M.	18/07/2023	REDRAWN FROM TPL DR No. PL117782(Rev A) & FOSTER WHEELER DR No. 25913-8820-25-1200(S1)


IRP DISTILLATION COLUMN
P&ID

PROJECT NAME			
DRAWN	A.Z.	REF.	-
TRACED	CAD	DATE	20-06-2023
CHECKED		APPROVED	Z.M.
SCALE	N.T.S.		
DRAWING No.	PL 122650		
REV	A		