

SANRAL
SOUTH AFRICAN NATIONAL ROADS AGENCY SOC LTD



Reg. No. 1958/2003584/53

BUILDING SOUTH AFRICA
THROUGH BETTER ROADS

THE SOUTH AFRICAN NATIONAL ROADS AGENCY SOC LIMITED

CONTRACT SANRAL R.033-130-2019/3

**THE UPGRADING OF NATIONAL ROAD R33
SECTION 13 IN VAALWATER TOWN (km 60.8
TO km 63.0)**

PROJECT DOCUMENT

DATE: NOVEMBER 2022

TENDER DOCUMENT
VOLUME 3
BOOK 1 OF 3

TENDERING PROCEDURES AND RETURNABLE SCHEDULES

**CHIEF EXECUTIVE OFFICER
SOUTH AFRICAN NATIONAL ROADS AGENCY SOC LIMITED
48 TAMBOTIE AVENUE
VAL DE GRACE
PRETORIA, 0184**

NAME OF TENDERER:

Set sequential number

CONTRACT SANRAL R.033-130-2019/3

FOR

THE UPGRADING OF NATIONAL ROAD R33 SECTION 13 IN VAALWATER TOWN (km 60.8 TO km 63.0)

PROJECT DOCUMENT

DATE: NOVEMBER 2022

TENDER DOCUMENT
VOLUME 3
BOOK 1 OF 3

TENDERING PROCEDURES AND RETURNABLE SCHEDULES

THIS DOCUMENT COMPILED UNDER THE DIRECTION OF THE REGIONAL
MANAGER
THE SOUTH AFRICAN NATIONAL ROADS AGENCY SOC LIMITED

The Regional Manager (Northern Region)
The South African National Roads Agency SOC Ltd
38 Ida Street
Menlo Park
Pretoria, 0081

LIST OF CONTRACT DOCUMENTS

The following documents form part of this contract:

- Volume 1: The Conditions of Contract for Construction for Building and Engineering Works Designed by the Employer (1999), published by the Federation Internationale des Ingenieurs-Conseils (FIDIC) which the tenderer shall purchase himself. (See note 1 below).
- Volume 2: The COTO Standard Specifications for Road and Bridge Works for South African Road Authorities (Draft Standard October 2020 edition), issued by the Committee of Transport Officials which the tenderer shall obtain himself. (See Note 2 below).
- Volume 2B:
- SANS 10098-1: Public lighting Part 1: The lighting of public thoroughfares.
 - SANS 10098-2: Public lighting Part 2: Lighting of certain specific areas of street and highways.
 - SANS/IEC 60598-1: Luminaires: Part 1. General Requirements and Tests
 - SANS/IEC 60598-2-3: Luminaires: Part 2-3: Particular requirements – Luminaires for road and street lighting;
 - SANS 475: Luminaires for interior lighting, street lighting and floodlighting — Performance requirements.
 - SANS 10142-1: Code of Practice for the Wiring of Premises-Part 1: Low Voltage Installations.
 - SANS 10142-2: The wiring of premises Part 2: Medium-voltage installations above 1 kV AC. not exceeding 22 kV AC and up to and including 3 MVA installed capacity
- Volume 3: The Project Document, containing the tender notice, Conditions of Tender, Tender Data, Returnable Schedules, general and particular conditions of contract, project specifications, Pricing Schedule, Form of offer and Project Information is issued by the Employer (see note 3 below). The Employer's Form of Acceptance and any correspondence from the selected tenderer, performance security-demand guarantee, and all addenda issued during the period of tender will also form part of this volume once a successful tenderer has been appointed.

The conditions of tender are the standard conditions of tender as contained in Annexure C of the STANDARD FOR UNIFORMITY IN ENGINEERING AND CONSTRUCTION WORKS CONTRACTS, AUGUST 2019: Standard conditions of tender, document, which the tenderer may download himself from the CIDB website

<https://www.cidb.org.za/download/100/procurement-documents-templates-and-guidelines/6157/standard-for-uniformity-august-2019.pdf>

Volume 4: The road works drawings.

Volume 5: The structural drawings (not applicable).

Volume 6: Materials investigation and utilisation.

There is no Volume 6. Materials investigation is included in Part C4

Volume 7: Environmental Management Plan report (not applicable).

Notes to tenderer:

1. **Volume 1: The Conditions of Contract for Construction for Building and Engineering Works Designed by the Employer (1999)**, published by the Federation Internationale des Ingenieurs-Conseils (FIDIC), is obtainable from CESA, P. O. Box 68482, Bryanston, 2021. Tel: (011) 463 2022 Fax: (011) 463 7383, e-mail: general@cesa.co.za
2. **Volume 2: The COTO Standard Specifications for Road and Bridge Works for South African Road Authorities (Draft Standard October 2020 edition)** is obtainable from SANRAL and can be downloaded free of charge from the SANRAL's website www.nra.co.za. The SANS standard specifications are available for purchase via the SABS webstore <https://store.sabs.co.za/>
3. **Volume 3** is issued at tender stage in electronic format downloaded from the SANRAL's website

The link contains the following files:

- The full Project Document in .pdf format (excluding the standard conditions of tender)
- The returnable forms in word format
- The pricing data in Excel format

The Standard Conditions of Tender may be downloaded from the CIDB website on the following link:

<https://www.cidb.org.za/download/100/procurement-documents-templates-and-guidelines/6157/standard-for-uniformity-august-2019.pdf>

At contract stage Volume 3 will be a bound signed paper copy containing the following documents:

- Returnable schedules relevant to the project
 - Agreements and Contract Data
 - Pricing Data
 - Scope of Work
 - Project Information
4. **SUBMISSION OF TENDER** – Of the contract documents, only the following elements of Volume 3 needs to be submitted printed and bound hard copy and electronically on flash drive marked “Main Tender (followed by the Tenderer name)” in a sealed envelope, in the following order :
 - Form of Offer (signed and scanned as .pdf and hard copy);
 - All returnable schedules and attachments and certificates (signed and scanned as .pdf and hard copy);
 - Completed pricing schedule (scanned copy in .pdf and copy in Excel and hard copy).

Information provided by a tenderer over and above the above elements of volume 3 shall be treated as information only and will only be bound into the document if the tenderer notes on Form A4: Schedule of Variations or deviations that the information has a bearing on the tender price.

5. For alternative offers the tenderer shall submit the following additional documentation, printed and bound hard copy and electronically in a separate flash drive marked “Alternative (followed by the Tenderer name)” in a sealed envelope in the following order:
 - Form of Offer (signed and scanned as .pdf and state “Alternative Form of Offer” and hard copy);
 - All returnable schedules and attachments and certificates applicable to the alternative offer (signed and scanned as .pdf).
 - Alternative Pricing Schedule (scanned copy in .pdf and copy in Excel).
 - Other relevant information.

TABLE OF CONTENTS		PAGE
PART T1:	TENDERING PROCEDURES.....	T-1
PART T2:	RETURNABLE SCHEDULES	T- 23

PART T1: TENDERING PROCEDURES

PART T1: TENDERING PROCEDURES

TABLE OF CONTENTS		PAGE
<u>T1.1</u>	<u>TENDER NOTICE AND INVITATION TO TENDER (INCORPORATING SBD1)</u>	T-4
<u>T1.2</u>	<u>TENDER DATA</u>	T-7

SOUTH AFRICAN NATIONAL ROADS AGENCY SOC LIMITED

CONTRACT SANRAL R.033-130-2019/3
FOR THE UPGRADING OF NATIONAL ROAD R33 SECTION 13 IN VAALWATER TOWN (KM 60.8
TO KM 63.0)

T1.1 TENDER NOTICE AND INVITATION TO TENDER (Incorporating SBD1)

SOUTH AFRICAN NATIONAL ROADS AGENCY SOC LIMITED

CONTRACT SANRAL R.033-130-2019/3

FOR THE UPGRADING OF NATIONAL ROAD R33 SECTION 13 IN VAALWATER TOWN (KM 60.8 TO KM 63.0)

T1.1 TENDER NOTICE AND INVITATION TO TENDER (Incorporating SBD1)

The South African National Roads Agency SOC Limited (SANRAL) invites tenders for the Upgrading of National Road R33 Section 13 in Vaalwater Town (Km 60.8 to Km 63.0). This project is in the province of Limpopo in the District Municipality of Waterberg and Modimolle-Mookgopong Local Municipality. The approximate duration is 18 months including three (3) Months for the Mobilisation.

CIDB Regulation 25(1B) will not be applicable to this contract

Only tenderers with a B-BBEE contributor status level of 1, 2, 3 or 4 and who are registered on the National Treasury Central Supplier Database and meet the minimum threshold designated for local production and content as stated in the Tender Data C.2.1, are eligible to tender.

It is estimated that tenderers should have a CIDB contractor grading designation of 9 CE or higher, however tenderers attention is drawn to clause C.2.1 of the Tender Data when submitting their tender.

Tenders from tenderers registered as potentially emerging enterprises but with a CIDB contractor grading designation lower than a contractor grading designation determined in accordance with the sum tendered, or a value determined in accordance with Regulation 25(7A) of the Construction Industry Development Regulations, will not be accepted.

It is a requirement of this project that the successful tenderer subcontract a minimum of thirty percent (30%) of the work by the end of the contract to Targeted Enterprise(s) as defined in the Contract Data.

TENDER DOCUMENTS

Tender documents are available from 18 November 2022 at no cost in electronic format downloaded from the SANRAL's website by the following link: https://www.nra.co.za/sanral-tenders/status?region_id=national

Tenderers must have access to MS Office ©2013 and Acrobat Adobe ©9.0, or similar compatible software.

Tenderers must submit, via email, the duly completed Form A1.1 Certificate of Intention to Submit a Tender prior to 25 November 2022. Failure to submit this certificate would result in the tenderer not receiving addenda or additional issued information and may result in the tenderer being non-responsive.

TENDERER'S MEETING

A compulsory clarification briefing meeting will be held at Vaalwater Farmers Hall, Vaalwater, Corner National Road R520 and R33 (24°17'4.58"S; 28° 6'4.57"E) on 28 November 2022 at 10:30am. Tenderers must pre-book for attendance at the clarification briefing meeting. Due to restrictions on numbers of attendees, **only one representative per tenderer/company can attend the briefing meeting**. A request to attend the clarification briefing meeting must be sent to procurementnr3@sanral.co.za the contact person listed on this Tender Notice.

A tenderer's representative cannot represent more than one tenderer at the tender briefing meeting.

COMPLETION AND DELIVERY OF TENDERS

The closing time for receipt of tenders is 11h00 on Thursday, 15 December 2022.

Telegraphic, telephonic, telex, email, facsimile and late tenders will not be accepted.

Tenders may only be submitted in the format as stated in the Tender Data.

Requirements for sealing, addressing, delivery, opening and assessment of tenders are stated in the Tender Data.

Queries relating to issues arising from these documents may be addressed to:

E-mail: procurementnr3@sanral.co.za

SOUTH AFRICAN NATIONAL ROADS AGENCY SOC LIMITED

CONTRACT SANRAL R.033-130-2019/3
FOR THE UPGRADING OF NATIONAL ROAD R33 SECTION 13 IN VAALWATER TOWN (KM 60.8
TO KM 63.0)

T1.2 TENDER DATA

T1.2 TENDER DATA

The conditions of tender are the standard conditions of tender as contained in Annexure C of the CIDB STANDARD FOR UNIFORMITY IN ENGINEERING AND CONSTRUCTION WORKS CONTRACTS as per Government Notice No. 423 published in Government Gazette No. 42622 of 08 AUGUST 2019 and as amended from time to time.

<https://www.cidb.org.za/wp-content/uploads/2021/07/Standard-for-Uniformity-August-2019.pdf>

The standard conditions of tender make several references to the tender data for details that apply specifically to this tender. The tender data shall have precedence in the interpretation of any ambiguity or inconsistency between the tender data and the standard conditions of tender.

Each item of data given below is cross-referenced to the clause marked "C" in the above mentioned Standard Conditions of Tender.

Each item of data given below is cross-referenced to the clause in the standard conditions of tender to which it mainly applies.

Clause Number	Data
C.1	GENERAL
C.1.1	Actions The Employer is The South African National Road Agency SOC Limited (SANRAL). The Employer's domicilium citandi et executandi (permanent physical business address) is: 48 Tambotie Avenue Val De Grace, Pretoria, 0184 The Employer's address for communication relating to this project is: Postal address: Private Bag X17 Lynnwood Ridge 0040 Delivery address: SANRAL Northern Region 38 Ida Street Menlo Park, Pretoria

Clause Number	Data
C.1.2	<p>Tender Documents</p> <p>The tender documents issued by the Employer comprise:</p> <p>Part T1: Tendering Procedures T1.1 Tender notice and invitation to tender(White) T1.2 Tender data(Pink)</p> <p>Part T2: Returnable Schedules T2.1 List of returnable documents (Yellow) T2.2 Returnable schedules (Yellow)</p> <p>Part C1: Agreements and contract data C1.1 Form of offer and acceptance (Yellow) C1.2 Contract data (Yellow)</p> <p>Part C2: Pricing data C2.1 Pricing instructions (assumptions) (Yellow) C2.2 Pricing Schedules / Bills of Quantities (Yellow)</p> <p>Part C3: Scope of work C3 Scope of work(Blue)</p> <p>Part C4: Project Information C4 Project Information (Green)</p> <p>Part C5: Annexures(White)</p>
C.1.4	<p>Communication and employer's agent</p> <p>The Employer's Agent during the tender period can be contacted at procurementnr3@sanral.co.za</p>
C.1.6.2	<p>Competitive negotiation procedure</p> <p>Clause C.1.6.2 is not applicable.</p>
C.1.6.2.1	<p>Option 1</p> <p>Price negotiations.</p> <p>(a) If the price offered by a tenderer scoring the highest points is not market related, the Organ of state may not award the tender to that tenderer.</p> <p>(b) The Organs of state may –</p> <ol style="list-style-type: none"> i. Negotiate a market related price with the tender scoring the highest points or cancel the tender; ii. If the tenderer does not agree to a market related price, negotiate a market related price with the tenderer scoring the second highest points or cancel the tender; iii. If the tenderer scoring the second highest points does not agree to a market related price, negotiate a market related price with the tenderer scoring the third highest points or cancel the tender; <p>(c) If a market related price is not agreed as envisaged in paragraph b(iii), the organ of state must cancel the tender.</p>
C.1.6.3	<p>Proposal procedure using the two stage-system</p> <p>Clause C.1.6.3 is not applicable.</p>
C.2	<p>Tenderer's Obligations</p>

Clause Number	Data																				
C.2.1	<p>Eligibility</p> <p>Only those tenderers who satisfy the following eligibility criteria are eligible to submit tenders:</p> <p>a) CIDB registration (Form A12)</p> <p>Only those tenderers who are registered with the CIDB, or are capable of being so prior to the evaluation of submissions, in a contractor grading designation equal to or higher than a contractor grading designation determined in accordance with the sum tendered, or a value determined in accordance with Regulation 25 (1B) or 25(7A) of the Construction Industry Development Regulations, forCE class of construction work, are eligible to have their tenders evaluated.</p> <p>Joint ventures are eligible to submit tenders provided that:</p> <p>1. every member of the joint venture is registered with the CIDB;</p> <p>2. the lead partner has a contractor grading designation in the CE class of construction work; or not lower than one level below the required grading designation in the class of works construction works under considerations and possess the required recognition status.</p> <p>3. the combined contractor grading designation calculated in accordance with the Construction Industry Development Regulations is equal to or higher than a contractor grading designation determined in accordance with the sum tendered for a CE* class of construction work or a value determined in accordance with Regulation 25 (1B) or 25(7A) of the Construction Industry Development Regulations.</p> <p>Tenderers whose CIDB registration expires within the tender validity period, need to demonstrate that there is a reasonable chance of being registered in the appropriate grading designation during the tender evaluation period, by submitting a copy of their timely application for CIDB registration, with their tender submission.</p> <p>Tenderers registered as potentially emerging enterprises but with a CIDB contractor grading designation lower than a contractor grading designation determined in accordance with the sum tendered, or a value determined in accordance with Regulation 25(7A) of the Construction Industry Development Regulations, are not eligible to have their tenders evaluated.</p> <table><tr><th>Category of tender</th><th>Upper limits per CIDB Regulation 17 (effective 7 October 2019)</th><th>Employer's allowable margins</th></tr><tr><td>CE 1</td><td>R500 000</td><td rowspan="8">The Employer will use its discretion in terms of CIDB Practice Note 3 on allowable margins to be accepted</td></tr><tr><td>CE 2</td><td>R1 000 000</td></tr><tr><td>CE 3</td><td>R3 000 000</td></tr><tr><td>CE 4</td><td>R6 000 000</td></tr><tr><td>CE 5</td><td>R10 000 000</td></tr><tr><td>CE 6</td><td>R20 000 000</td></tr><tr><td>CE 7</td><td>R60 000 000</td></tr><tr><td>CE 8</td><td>R200 000 000</td></tr></table> <p>This contract is not classified in terms of CIDB Regulation 25(1B), and the value of the contract may, for the purpose of CIDB Regulation 25(1), not be taken at its annual value.</p> <p>The tender will be declared non-responsive if:</p> <ul style="list-style-type: none">- The Tenderer is not registered on CIDB within the required contractor grading and category prior to evaluation of submission.	Category of tender	Upper limits per CIDB Regulation 17 (effective 7 October 2019)	Employer's allowable margins	CE 1	R500 000	The Employer will use its discretion in terms of CIDB Practice Note 3 on allowable margins to be accepted	CE 2	R1 000 000	CE 3	R3 000 000	CE 4	R6 000 000	CE 5	R10 000 000	CE 6	R20 000 000	CE 7	R60 000 000	CE 8	R200 000 000
Category of tender	Upper limits per CIDB Regulation 17 (effective 7 October 2019)	Employer's allowable margins																			
CE 1	R500 000	The Employer will use its discretion in terms of CIDB Practice Note 3 on allowable margins to be accepted																			
CE 2	R1 000 000																				
CE 3	R3 000 000																				
CE 4	R6 000 000																				
CE 5	R10 000 000																				
CE 6	R20 000 000																				
CE 7	R60 000 000																				
CE 8	R200 000 000																				

Clause Number	Data
	<div><div><div><div><div></div><div></div></div><div><div></div><div></div></div></div><div><div></div><div></div></div><div><div></div><div></div></div><div><div></div><div></div></div><div><div></div><div></div></div><div><div></div><div></div></div><div><div></div><div></div></div><div><div></div><div></div></div><div><div></div><div></div></div><div><div></div><div></div></div><div><div></div><div></div></div><div><div></div><div></div></div><div><div></div><div></div></div><div><div></div><div></div></div><div><div></div><div></div></div><div><div></div><div></div></div><div><div></div><div></div></div><div><div></div><div></div></div><div><div></div><div></div></div><div><div></div><div></div></div><div><div></div><div></div></div><div><div></div><div></div></div><div><div></div><div></div></div><div><div></div><div></div></div><div><div></div><div></div></div><div><div></div><div></div></div><div><div></div><div></div></div><div><div></div><div></div></div><div><div></div><div></div></div><div><div></div><div></div></div><div><div></div><div></div></div><div><div></div><div></div></div><div><div></div><div></div></div><div><div></div><div></div></div><div><div></div><div></div></div><div><div></div><div></div></div><div><div></div><div></div></div><div><div></div><div></div></div><div><div></div><div></div></div><div><div></div><div></div></div><div><div></div><div></div></div><div><div></div><div></div></div><div><div></div><div></div></div><div><div></div><div></div></div><div><div></div><div></div></div><div><div></div><div></div></div><div><div></div><div></div></div><div><div></div><div></div></div><div><div></div><div></div></div><div><div></div><div></div></div><div><div></div><div></div></div><div><div></div><div></div></div><div><div></div><div></div></div><div><div></div><div></div></div><div><div></div><div></div></div><div><div></div><div></div></div><div><div></div><div></div></div><div><div></div><div></div></div><div><div></div><div></div></div><div><div></div><div></div></div><div><div></div><div></div></div><div><div></div><div></div></div><div><div></div><div></div></div><div><div></div><div></div></div><div><div></div><div></div></div><div><div></div><div></div></div><div><div></div><div></div></div><div><div></div><div></div></div><div><div></div><div></div></div><div><div></div><div></div></div><div><div></div><div></div></div><div><div></div><div></div></div><div><div></div><div></div></div><div><div></div><div></div></div><div><div></div><div></div></div><div><div></div><div></div></div><div><div></div><div></div></div><div><div></div><div></div></div><div><div></div><div></div></div><div><div></div><div></div></div><div><div></div><div></div></div><div><div></div><div></div></div><div><div></div><div></div></div><div><div></div><div></div></div><div><div></div><div></div></div><div><div></div><div></div></div><div><div></div><div></div></div><div><div></div><div></div></div><div><div></div><div></div></div><div><div></div><div></div></div><div><div></div><div></div></div><div><div></div><div></div></div><div><div></div><div></div></div><div><div></div><div></div></div><div><div></div><div></div></div><div><div></div><div></div></div><div><div></div><div></div></div><div><div></div><div></div></div><div><div></div><div></div></div><div><div></div><div></div></div><div><div></div><div></div></div><div><div></div><div></div></div><div><div></div><div></div></div><div><div></div><div></div></div><div><div></div><div></div></div><div><div></div><div></div></div><div><div></div><div></div></div><div><div></div><div></div></div><div><div></div><div></div></div><div><div></div><div></div></div><div><div></div><div></div></div><div><div></div><div></div></div><div><div></div><div></div></div><div><div></div><div></div></div><div><div></div><div></div></div><div><div></div><div></div></div><div><div></div><div></div></div><div><div></div><div></div></div><div><div></div><div></div></div><div><div></div><div></div></div><div><div></div><div></div></div><div><div></div><div></div></div><div><div></div><div></div></div><div><div></div><div></div></div><div><div></div><div></div></div><div><div></div><div></div></div><div><div></div><div></div></div><div><div></div><div></div></div><div><div></div><div></div></div><div><div></div><div></div></div><div><div></div><div></div></div><div><div></div><div></div></div><div><div></div><div></div></div><div><div></div><div></div></div><div><div></div><div></div></div><div><div></div><div></div></div><div><div></div><div></div></div><div><div></div><div></div></div><div><div></div><div></div></div><div><div></div><div></div></div><div><div></div><div></div></div><div><div></div><div></div></div><div><div></div><div></div></div><div><div></div><div></div></div><div><div></div><div></div></div><div><div></div><div></div></div><div><div></div><div></div></div><div><div></div><div></div></div><div><div></div><div></div></div><div><div></div><div></div></div><div><div></div><div></div></div><div><div></div><div></div></div><div><div></div><div></div></div><div><div></div><div></div></div><div><div></div><div></div></div><div><div></div><div></div></div><div><div></div><div></div></div><div><div></div><div></div></div><div><div></div><div></div></div><div><div></div><div></div></div><div><div></div><div></div></div><div><div></div><div></div></div><div><div></div><div></div></div><div><div></div><div></div></div><div><div></div><div></div></div><div><div></div><div></div></div><div><div></div><div></div></div><div><div></div><div></div></div><div><div></div><div></div></div><div><div></div><div></div></div><div><div></div><div></div></div><div><div></div><div></div></div><div><div></div><div></div></div><div><div></div><div></div></div><div><div></div><div></div></div><div><div></div><div></div></div><div><div></div><div></div></div><div><div></div><div></div></div><div><div></div><div></div></div><div><div></div><div></div></div><div><div></div><div></div></div><div><div></div><div></div></div><div><div></div><div></div></div><div><div></div><div></div></div><div><div></div><div></div></div><div><div></div><div></div></div><div><div></div><div></div></div><div><div></div><div></div></div><div><div></div><div></div></div><div><div></div><div></div></div><div><div></div><div></div></div><div><div></div><div></div></div><div><div></div><div></div></div><div><div></div><div></div></div><div><div></div><div></div></div><div><div></div><div></div></div><div><div></div><div></div></div><div><div></div><div></div></div><div><div></div><div></div></div><div><div></div><div></div></div><div><div></div><div></div></div><div><div></div><div></div></div><div><div></div><div></div></div><div><div></div><div></div></div><div><div></div><div></div></div><div><div></div><div></div></div><div><div></div><div></div></div><div><div></div><div></div></div><div><div></div><div></div></div><div><div></div><div></div></div><div><div></div><div></div></div><div><div></div><div></div></div><div><div></div><div></div></div><div><div></div><div></div></div><div><div></div><div></div></div><div><div></div><div></div></div><div><div></div><div></div></div><div><div></div><div></div></div><div><div></div><div></div></div><div><div></div><div></div></div><div><div></div><div></div></div><div><div></div><div></div></div><div><div></div><div></div></div><div><div></div><div></div></div><div><div></div><div></div></div><div><div></div><div></div></div><div><div></div><div></div></div><div><div></div><div></div></div><div><div></div><div></div></div><div><div></div><div></div></div><div><div></div><div></div></div><div><div></div><div></div></div><div><div></div><div></div></div><div><div></div><div></div></div><div><div></div><div></div></div><div><div></div><div></div></div><div><div></div><div></div></div><div><div></div><div></div></div><div><div></div><div></div></div><div><div></div><div></div></div><div><div></div><div></div></div><div><div></div><div></div></div><div><div></div><div></div></div><div><div></div><div></div></div><div><div></div><div></div></div><div><div></div><div></div></div><div><div></div><div></div></div><div><div></div><div></div></div><div><div></div><div></div></div><div><div></div><div></div></div><div><div></div><div></div></div><div><div></div><div></div></div><div><div></div><div></div></div><div><div></div><div></div></div><div><div></div><div></div></div><div><div></div><div></div></div><div><div></div><div></div></div><div><div></div><div></div></div><div><div></div><div></div></div><div><div></div><div></div></div><div><div></div><div></div></div><div><div></div><div></div></div><div><div></div><div></div></div><div><div></div><div></div></div><div><div></div><div></div></div><div><div></div><div></div></div><div><div></div><div></div></div><div><div></div><div></div></div><div><div></div><div></div></div><div><div></div><div></div></div><div><div></div><div></div></div><div><div></div><div></div></div><div><div></div><div></div></div><div><div></div><div></div></div><div><div></div><div></div></div><div><div></div><div></div></div><div><div></div><div></div></div><div><div></div><div></div></div><div><div></div><div></div></div><div><div></div><div></div></div><div><div></div><div></div></div><div><div></div><div></div></div><div><div></div><div></div></div><div><div></div><div></div></div><div><div></div><div></div></div><div><div></div><div></div></div><div><div></div><div></div></div><div><div></div><div></div></div><div><div></div><div></div></div><div><div></div><div></div></div><div><div></div><div></div></div><div><div></div><div></div></div><div><div></div><div></div></div><div><div></div><div></div></div><div><div></div><div></div></div><div><div></div><div></div></div><div><div></div><div></div></div><div><div></div><div></div></div><div><div></div><div></div></div><div><div></div><div></div></div><div><div></div><div></div></div><div><div></div><div></div></div><div><div></div><div></div></div><div><div></div><div></div></div><div><div></div><div></div></div><div><div></div><div></div></div><div><div></div><div></div></div><div><div></div><div></div></div><div><div></div><div></div></div><div><div></div><div></div></div><div><div></div><div></div></div><div><div></div><div></div></div><div><div></div><div></div></div><div><div></div><div></div></div><div><div></div><div></div></div><div><div></div><div></div></div><div><div></div><div></div></div><div><div></div><div></div></div><div><div></div><div></div></div><div><div></div><div></div></div><div><div></div><div></div></div><div><div></div><div></div></div><div><div></div><div></div></div><div><div></div><div></div></div><div><div></div><div></div></div><div><div></div><div></div></div><div><div></div><div></div></div><div><div></div><div></div></div><div><div></div><div></div></div><div><div></div><div></div></div><div><div></div><div></div></div><div><div></div><div></div></div><div><div></div><div></div></div><div><div></div><div></div></div><div><div></div><div></div></div><div><div></div><div></div></div><div><div></div><div></div></div><div><div></div><div></div></div><div><div></div><div></div></div><div><div></div><div></div></div><div><div></div><div></div></div><div><div></div><div></div></div><div><div></div><div></div></div><div><div></div><div></div></div><div><div></div><div></div></div><div><div></div><div></div></div><div><div></div><div></div></div><div><div></div><div></div></div><div><div></div><div></div></div><div><div></div><div></div></div><div><div></div><div></div></div><div><div></div><div></div></div><div><div></div><div></div></div><div><div></div><div></div></div><div><div></div><div></div></div><div><div></div><div></div></div><div><div></div><div></div></div><div><div></div><div></div></div><div><div></div><div></div></div><div><div></div><div></div></div><div><div></div><div></div></div><div><div></div><div></div></div><div><div></div><div></div></div><div><div></div><div></div></div><div><div></div><div></div></div><div><div></div><div></div></div><div><div></div><div></div></div><div><div></div><div></div></div><div><div></div><div></div></div><div><div></div><div></div></div><div><div></div><div></div></div><div><div></div><div></div></div><div><div></div><div></div></div><div><div></div><div></div></div><div><div></div><div></div></div><div><div></div><div></div></div><div><div></div><div></div></div><div><div></div><div></div></div><div><div></div><div></div></div><div><div></div><div></div></div><div><div></div><div></div></div><div><div></div><div></div></div><div><div></div><div></div></div><div><div></div><div></div></div><div><div></div><div></div></div><div><div></div><div></div></div><div><div></div><div></div></div><div><div></div><div></div></div><div><div></div><div></div></div><div><div></div><div></div></div><div><div></div><div></div></div><div><div></div><div></div></div><div><div></div><div></div></div><div><div></div><div></div></div><div><div></div><div></div></div><div><div></div><div></div></div><div><div></div><div></div></div><div><div></div><div></div></div><div><div></div><div></div></div><div><div></div><div></div></div><div><div></div><div></div></div><div><div></div><div></div></div><div><div></div><div></div></div><div><div></div><div></div></div><div><div></div><div></div></div><div><div></div><div></div></div><div><div></div><div></div></div><div><div></div><div></div></div><div><div></div><div></div></div><div><div></div><div></div></div><div><div></div><div></div></div><div><div></div><div></div></div><div><div></div><div></div></div><div><div></div><div></div></div><div><div></div><div></div></div><div><div></div><div></div></div><div><div></div><div></div></div><div><div></div><div></div></div><div><div></div><div></div></div><div><div></div><div></div></div><div><div></div><div></div></div><div><div></div><div></div></div><div><div></div><div></div></div></div></div>

Clause Number	Data			
		Low Voltage	90%	
		Low Cost Reticulation	90%	
		Medium & High Voltage	90%	
		ACR	90%	
	Telecom Cables: cables used for telecommunications			
	Cable Products		Stipulated minimum threshold	
	Optical Fibre Cables		90%	
	Copper Telecom Cables		90%	
	Excluded in the designation are mainly primary steel, copper, aluminium, polyvinyl chloride (PVC), cross-linked polyethylene (XLPE), aramid yarn, and optical fibre used for fabrication of cable products. This is to encourage local manufacturers to seek the best global competitive prices for primary materials hence the competitive imported materials used in the manufacture of cables will be deemed to have been sourced locally for the purposes of calculating local content.			
	iii)	Plastic Pipes		
	Only locally produced or locally manufactured Plastic Pipes with a minimum threshold for local content and production as stipulated below will be considered.			
	Plastic Pipes			
	Product Types		Stipulated minimum threshold	
	Polyvinyl chloride (PVC) pipes		100%	
	High density polyethylene (HDPE) pipes		100%	
	Polypropylene (PP) pipes		100%	
iv)	Textiles, Clothing, Leather and Footwear			
	Only locally produced or locally manufactured Textiles, Clothing, Leather and Footwear from local raw material or input, with a minimum threshold for local production and content of 100% will be considered.			
	Textiles, Clothing, Leather and Footwear			
	Product Types		Stipulated minimum threshold	
	Textiles		100%	
i)	Bagged and bulk cement			
	Only locally produced or locally manufactured bagged and bulk cement produced using locally produced raw materials with the minimum threshold percentages for local production and content stated below will be considered:			
	Bagged and bulk cement			
	Cement Type	Description	Application	Stipulated Minimum Threshold
	Cem II	Portland cement containing varying additions of secondary materials, i.e. fly ash.	All civil and building construction as appropriate	100 %

Clause Number	Data			
			pozzolana, slag, silica fume, or limestone	
	The tenderer shall complete the Declaration Certificate for Local Production and Content (Form A3.5) and the Local Content Declaration: Summary Schedule (Form A3.6) for each product.			
	If the minimum threshold/s % local content is below the stipulated minimum threshold for local production and content, or if either of the Forms is omitted, the tender will be declared non-responsive.			
	c) National Treasury Central Supplier Database (Form A3.4)			
	Tenderers, or in the event of a joint venture, each member of the joint venture, must be registered on the National Treasury Central Supplier Database at the closing date for tender submissions. If not registered as verified online at tender closing; the tender will be declared non-responsive.			
	d) Pre-qualification criteria for preferential procurement (Form C1.1)			
	Only tenders with a B-BBEE contributor status level of 1, 2, 3 or 4, are eligible to tender.			
	The tenderer shall submit a valid B-BBEE certificate or Sworn Affidavit (where applicable) in compliance with the requirements of Tender Data C.3.11., as proof of eligibility.			
	The tender will be declared non-responsive:			
	a) If the B-BBEE Certificate is not submitted or submitted B-BBEE certificate is not valid; or b) If the B-BBEE Certificate is not submitted, and the tenderer has claimed a status point level; or c) If tenderer failed to submit a valid B-BBEE Certificate but claimed status level points; or d) If the tenderer submits a B-BBEE Certificate that is expired - but did claim preference points; or e) If the tenderer submits a B-BBEE Certificate that does not comply with requirements; or f) If the tenderer submits the Scorecard assessment report only; or g) If, in a case of a Joint Venture, the tenderer submits an unincorporated consolidated Joint Venture B-BBEE Certificate which is not project specific; or h) If, in a case of a Joint Venture, the tenderer submits an unincorporated consolidated Joint Venture B-BBEE Certificate which does not have a contract description and / or a tender number; or i) If a tenderer only submits one B-BBEE certificate in one tender submission, where multiple tenders were issued by SANRAL; or j) If the BBEE certificate or Sworn Affidavit is not submitted or not valid; or k) for a Sworn Affidavit; if i. EME (not start-up) submits a Sworn Affidavit with total revenue above R3 million (contractors) instead of a B-BBEE Certificate. or ii. QSE submits Sworn Affidavit (consultants and contractors) instead of a B-BBEE Certificate			
	Failure to satisfy all the eligibility criteria will result in a non-eligible tender.			
C.2.2	Cost of tendering			

Clause Number	Data
	Tender documents are available from SANRAL website at no cost.
C.2.6	<p>Acknowledge addenda</p> <p>Failure to apply instructions contained in addenda issued by the Employer will render a Tenderer's offer non-responsive in terms of Condition of Tender C.3.8. Test for Responsiveness.</p>
C.2.7	<p>Clarification meeting</p> <p>A compulsory clarification briefing meeting will be held at Vaalwater Farmers Hall, Vaalwater, Corner National Road R520 and R33 (24°17'4.58"S; 28° 6'4.57"E) on 28 November 2022 at 10:30.. Tenderers must pre-book for attendance at the clarification briefing meeting. Due to restrictions on numbers of attendees, only one representative per tenderer/company can attend the briefing meeting. A request to attend the clarification briefing meeting must be sent to procurementnr3@sanral.co.za the contact person listed on this Tender Notice..</p> <p>A tenderer's representative cannot represent more than one tenderer at the tender clarification briefing meeting.</p> <p>The onus rests with the tenderer to ensure that the representative attending the briefing session is appropriately qualified to understand all directives and clarifications given in the briefing session.</p> <p>The signature on the duly completed and signed Form A1 shall be considered proof that the tenderer attended the whole clarification briefing session and clearly understood all directives and clarifications given in the session.</p>
C.2.8	<p>Seek clarification</p> <p>Request clarifications at least 7 working days before the closing date.</p>
C.2.9	<p>Insurance</p> <p>No insurance is provided by the Employer.</p>
C.2.10	Pricing the tender offer
C.2.10.3	The rates and prices shall be adjusted as specified in the conditions of contract clause 13.8 Adjustments for Changes in Costs
C.2.10.4	Tenderers are required to state the rates, amounts and currencies in Rand.
C.2.12	Alternative tender offers
C.2.12.1	A tenderer wishing to submit an alternative offer (excluding alternative offers of different contract duration, retention guarantees, discounted offers or different compliant material sources) shall first apply to the Employer for confirmation that the Employer's standards and requirements envisaged in the design are not compromised or reduced. Such confirmation must have been provided by the Employer in writing at least 5 (five) working days before the date of tender closing, or as extended by an addendum sent to all tenderers. The application shall not be submitted later than 7 (seven) working days before the date of tender closing given in Tender Data clause C.2.15, or as extended by an addendum sent to all tenderers.

Clause Number	Data
	<p>The replacement of specified construction items like pipes, in situ culverts, kerbs and channels with similar products constructed of different materials (e.g. plastic products or pre-cast construction) are generally not acceptable as alternatives because construction using such alternative products would have been considered during the design stage and not selected as appropriate and because the Employer is able, post-award, to make proposals to or receive proposals from the contractor. However, if such alternative materials are considered acceptable by the employer's agent as giving the tenderer a financial advantage and/or not transferring risk, the qualification must be recorded on returnable schedule A4: Schedule of Deviations or Qualifications by Tenderer.</p> <p>Also, not acceptable as alternative offers are the submission of alternative key persons, alterations to contingency pay items provided in the bill of quantities (pricing schedule), fixed prices for individual items or a fixed price contract.</p> <p>If an alternative proposal is confirmed to be acceptable, calculations, drawings and all other pertinent technical information and characteristics as well as proposed modification of, or alternative to, the Pricing Data must be submitted with the alternative tender offer to enable the Employer to evaluate the efficacy of the alternative and its principal elements, to take a view on the degree to which the alternative complies with the Employer's standards and requirements and to evaluate the acceptability of the pricing proposals. Calculations must be set in clear and logical sequence and must clearly reflect all design assumptions. Pricing Data must reflect all assumptions in the development of the pricing proposal.</p> <p>Should an alternative structural design be proposed, the proposed alternative Pricing Data shall include an amount equal to 3% of the amount tendered for the alternative offer to cover the Employer's costs of confirming the acceptability of the detailed design before it is constructed. If the alternative offer is accepted, this amount will serve as a negative prime cost sum under Part C section C1.2 to be deducted from the contractor's payment certificates. The Employer undertakes to provide full accounting of the amount expended for this contingent sum and if exceeded, no further payments shall be deducted. Failure by a tenderer to include the required amount for confirming the alternative design may render his alternative tender as non-responsive.</p> <p>Acceptance of an alternative offer will mean acceptance in principle of the offer. It will be an obligation of the contract with the tenderer, in the event that the alternative is accepted, to accept full responsibility and liability that the alternative offer complies in all respects with the Employer's standards and requirements.</p>
C.2.13	Submitting a tender offer
C.2.13.2	<p>The returnable documents shall be electronically completed in their entirety, submitted on the issued software format or fully compatible format, unless otherwise specified.</p> <p>Option 1: Submission in the tender box</p> <p>Submit the tender offer electronically on a flash drive.</p> <p>(In the relevant MS Word 2013 and MS Excel 2013 format as issued, and not in .pdf format, except where so specified.)</p>
C.2.13.3	<p>Option 1: Submission in the tender box</p> <p>The tenderer is required to upload all certificates as listed in the List of Returnable Schedules as scanned copies, in .pdf format, on the flash drive</p> <p>Submit only the signed original tender offer</p> <p><i>(Note to tenderer: submit all returnable schedules as listed in Form T.2.1: List of Returnable Schedules.)</i></p>

Clause Number	Data
C.2.13.5	<p>Option 1: Submission in the tender box</p> <p>Only the following needs to be submitted:</p> <p>a) Main Tender Offer</p> <p>The following information to be submitted electronically on flash drive and marked Main Tender Offer followed by the "Tenderer name", in the following order:</p> <ul style="list-style-type: none"> - Form of Offer (signed and scanned as .pdf) - All returnable schedules and attachments and certificates specific to the tender (signed and scanned as .pdf) - Completed pricing schedule (scanned copy in .pdf and copy in Excel) <p>b) For alternative offers the tenderer shall submit the following additional documentation, in an electronically on a separate flash drive marked Alternative followed by the "Tenderer name":</p> <ul style="list-style-type: none"> - Form of Offer (signed and scanned as .pdf and state "Alternative Form of Offer") - All returnable schedules and attachments and certificates applicable to the alternative offer (signed and scanned as .pdf) - Alternative Pricing Schedule (scanned copy in .pdf and copy in Excel) - Other relevant information. <p>In the event of any discrepancy between the contents of the electronically priced schedule in Excel, and the electronically provided pricing schedule in .pdf format, the contents of the electronically pricing schedule in .pdf format shall be taken as the valid contents. For the information provided by the tenderer as part of his submission, e.g. rates, the electronically signed schedule in .pdf shall be taken as the valid submission.</p> <p>Submit the tender offer electronically on a flash drive in a sealed envelope marked with the tenderer's company name, the project number and description.</p>
C.2.13.6	Clause not applicable
C.2.13.7	Place and seal the electronically completed tender document (flash drive) in an envelope or package clearly marked "TENDER" and bearing the Employer's name, the contract number and description, the tenderer's authorised representative's name, the tenderer's postal address and contact telephone numbers.
C.2.14	<p>Information and data to be completed in all respects</p> <p>Provided that the omission is not a material omission, the Employer reserves the right to condone the omission and may waive any nonconformities in the tender.</p> <p>Provided that the omission is not a material omission, the Employer reserves the right to condone the omission and may request the tenderer to submit the necessary information or documentation, within a reasonable period of time, to rectify nonmaterial nonconformities in the tender related to documentation requirements.</p>
C.2.15	Closing time
C.2.15.1	<p>Option 1</p> <p>Submission in tender box</p> <p>The Employer's address for delivery of tender offers and identification details to be shown on each tender offer package are:</p> <p>Location of tender box: SANRAL Northern Region Reception</p> <p>Physical address: SANRAL Northern Region, 38 Ida Street. Menlo Park, Pretoria.</p> <p>Identification details: Place the tender offer and flash drive in a package marked with the tenderer's company name, the project number and description: CONTRACT SANRAL R.033-130-2019/3: THE UPGRADING OF NATIONAL ROAD R33 SECTION 13 IN VAALWATER TOWN (KM 60.8 TO KM 63.0)</p>

Clause Number	Data
	<p>Tenders must be submitted during hours (09:00 to 16:00) Monday to Friday at the Employer's address.</p> <p>It is in the tenderer's interest to ensure that the delivery of the tender offer is recorded in the Employer's tenders received register and deposited in the tender box.</p>
C.2.16	Tender offer validity
C.2.16.1	The tender offer validity period is 24 weeks
C.2.16.3	<p>Where a tenderer, at any time after the opening of his tender offer but prior to entering into a contract based on his tender offer:</p> <ul style="list-style-type: none"> a) withdraws his tender; b) gives notice of his inability to execute the contract in terms of his tender; or c) fails to comply with a request made in terms of C.2.17, C.2.18 or C.3.9, <p>such tenderer shall be barred from tendering on any of the Employer's tenders for a period to be determined by the Employer, but not less than six (6) months from a date determined by the Employer. This sanction also applies to tenders under evaluation and not yet awarded. This sanction does not apply to tenders under evaluation where a request for extension of the validity period was not accepted by the tenderer. The Employer may fully or partly exempt a tenderer from the provisions of this condition if he is of the opinion that the circumstances justify the exemption.</p>
C.2.18	Provide other material
C.2.18.1	Any additional information requested under this clause must be provided within 5 (five) working days of date of request.
C.3	The Employer's undertakings
C.3.1	Respond to requests from the tenderer
C.3.1.1	<p>The employer shall respond to clarifications received up to 7 working days before tender closing date.</p> <p>The Employer shall respond to any clarifications from the tenderers emanating from the addenda until 3 working days before tender closing date.</p>
C.3.2	Issue Addenda
	The employer shall issue addenda until ten (10) working days before tender closing date.
C.3.4	Opening of tender submissions
C.3.4.1	<p>The time for opening of the tender offer via live streaming are:</p> <p>Time: 11h00 on 15 December 2022.</p> <p>Location: The tender opening can be viewed via live streaming; tenderers will be invited to a Teams meeting for tender opening as per form A1.1 contact details</p>
C.3.5	Two-envelope system
	Clause C.3.5 is not applicable.
C.3.7	Grounds for rejection and disqualification
	Prior to disqualification, the Employer shall inform the tenderer and give the tenderer an opportunity to make representations within 14 days as to why the tender submitted should not be disqualified and as to why the tenderer should not be restricted by the National Treasury from conducting any business with any organ of state for a period not exceeding 10 years.

Clause Number	Data
	In the event of disqualification, the Employer may, at its sole discretion, claim damages from the tenderer and impose a specified period during which tender offers will not be accepted from the offending tenderer and, the Employer shall inform the National Treasury and the CIDB in writing.
C.3.8	Test for responsiveness
C.3.8.2	<p>A Substantially responsive tender is a tender in which all of the material information and documentation submitted at close of tender contains non-material and non-conformities to the bid specifications but are not related to price. The correction of any such documentation or information, or the condonement for the non-inclusion of any such document or information may not be prejudicial towards the offer and claimed preference of any responsive tender or be construed to be giving an unfair advantage to any tender.</p> <p>A responsive tender is also one that conforms to all the terms, conditions, and scope of work of the tender documents, without material omissions. The test for a material omission is the same as the test for a material deviation or qualification.</p>
C.3.9	Arithmetical errors, omissions, discrepancies and imbalanced unit rates
C.3.9.1	Check responsive tenders for discrepancies between amounts in words and amounts in figures. Where there is a discrepancy between the amounts in figures and the amount in words, the amount appearing in the summary to the Pricing Schedule shall govern.
C.3.9.3	<p>Check responsive tender offers for:</p> <ul style="list-style-type: none"> a) the gross misplacement of the decimal point in any unit rate; b) omissions made in completing the pricing schedule or bills of quantities; or c) arithmetic errors in: <ul style="list-style-type: none"> i) line item totals resulting from the product of a unit rate and a quantity in bills of quantities or schedules of prices; or ii) the summation of the prices. d) imbalanced unit rates. <p>Notify shortlisted tenderers of all errors, omissions or imbalanced rates that are identified in their tender offers and either confirm the tender offers as tendered or accept the corrected total prices.</p>

Clause Number	Data
C.3.9.4	<p>Where the tenderer elects to confirm the correction of the errors, omissions or imbalanced rates, the tender offer shall be corrected as follows:</p> <ol style="list-style-type: none"> a) If bills of quantities or pricing schedules apply and there is an error in the line item total resulting from the product of the unit rate and the quantity, the unit rate shall govern, and the line item total shall be corrected. Where there is an obviously gross misplacement of the decimal point in the unit rate, the line item total as quoted and the unit rate shall be corrected. b) Where there is an error in the total of the prices either as a result of other corrections required by this checking process or in the tenderer's addition of prices, the total of the prices shall be corrected. c) Where the unit rates are imbalanced the tenderer shall adjust such rates by increasing or decreasing them and selected others while retaining the total of the prices derived after any other corrections made under (a) and (b) above. <p>Where there is an omission of a line item, no correction is possible, and the offer may be declared non-responsive.</p> <p>Declare as non-responsive and reject any offer from a tenderer who elects not to accept the proposed correction of the; errors, omissions or imbalanced rates, and subject the tenderer to the sanction under C.2.16.2.</p> <p>The tenderer is required to submit balanced unit rates for rate only items in the pricing schedule. The rates submitted for these items will be taken into account in the evaluation of tenders.</p> <p>If the Form of Offer is submitted but the Pricing Schedule is omitted, where rate only items are applicable; or If a signed Form of Offer is submitted with an incomplete pricing schedule (no summary to tender) that does not balance back to the Form of Offer and the Pricing schedule is incomplete; or If a signed Form of Offer is submitted with an incomplete pricing schedule that does not balance back to the Form of Offer and only summary of Pricing Schedule submitted; then the rates cannot be evaluated and the tender shall be declared non-responsive</p>

Clause Number	Data																														
C.3.11.	<p>Evaluation of tender offers</p> <p>The tender will be evaluated in terms of Preferential Procurement Policy Framework Act (PPPFA, Act 5 of 2000).</p> <p>i. 80/20 preference point system for acquisition of goods and services for Rand value equal to or above R30 000 and up to R50 million</p> <p>The following formula will be used to calculate the points out of 80 for price:</p> <p>$Ps = 80(1 - (Pt - Pm) / Pm)$</p> <p>Where:</p> <ul style="list-style-type: none">- Ps is the points scored for price of tender under consideration.- Pt is the price of the tender under consideration; and- Pm is the price of the lowest acceptable tender. <p>ii. 90/10 preference point system for acquisition of goods and services for Rand value above R50 million</p> <p>The following formula will be used to calculate the points out of 90 for price:</p> <p>$Ps = 90(1 - (Pt - Pm) / Pm)$</p> <p>Where:</p> <ul style="list-style-type: none">- Ps is the points scored for price of tender under consideration.- Pt is the price of the tender under consideration; and- Pm is the price of the lowest acceptable tender. <p>Points are based on a tenderer's scorecard measured in terms of the Broad-Based Black Economic Empowerment Act (B-BBEE, Act 53 of 2003 as amended in Act 46 of 2013) and the Preferential Procurement Policy Framework Act (PPPFA, Act 5 of 2000).</p> <p>The following table must be used to calculate the points out of 20 or 10 for B-BBEE:</p> <table><tr><th>B-BBEE Status Level of contributor</th><th>Number of Points for financial value up to and including R50 000 000</th><th>Number of Points for financial value above R50 000 000</th></tr><tr><td>1</td><td>20</td><td>10</td></tr><tr><td>2</td><td>18</td><td>9</td></tr><tr><td>3</td><td>14</td><td>6</td></tr><tr><td>4</td><td>12</td><td>5</td></tr><tr><td>5</td><td>8</td><td>4</td></tr><tr><td>6</td><td>6</td><td>3</td></tr><tr><td>7</td><td>4</td><td>2</td></tr><tr><td>8</td><td>2</td><td>1</td></tr><tr><td>Non-compliant contributor</td><td>0</td><td>0</td></tr></table> <p>Eligibility for B-BEE points is subject to the following conditions:</p> <p>1. A tenderer's scorecard shall be a B-BBEE Certificate issued in accordance with:</p> <ul style="list-style-type: none">- the amended Construction Sector Codes published in Notice 931 of 2017 of Government Gazette No. 41287 on 1 December 2017 by the Department of Trade and Industry; or	B-BBEE Status Level of contributor	Number of Points for financial value up to and including R50 000 000	Number of Points for financial value above R50 000 000	1	20	10	2	18	9	3	14	6	4	12	5	5	8	4	6	6	3	7	4	2	8	2	1	Non-compliant contributor	0	0
B-BBEE Status Level of contributor	Number of Points for financial value up to and including R50 000 000	Number of Points for financial value above R50 000 000																													
1	20	10																													
2	18	9																													
3	14	6																													
4	12	5																													
5	8	4																													
6	6	3																													
7	4	2																													
8	2	1																													
Non-compliant contributor	0	0																													

Clause Number	Data
	<ul style="list-style-type: none"> - in the event that the Measured Entity operates in more than one sector or a sub-sector, the scorecard for the sector or sub-sector in which the majority of its core activities (measured in terms of annual revenue) are located will be acceptable. The tenderer must comply with the annual revenue thresholds for EME or QSE or Generic in accordance with the amended Construction Sector Codes; and
2.	The scorecard shall be submitted as a certificate attached to Returnable Schedule Form C1; and
3.	The certificate shall: <ul style="list-style-type: none"> - be valid at the tender closing date; and - have been issued by a verification agency accredited by the South African National Accreditation System (SANAS); or - be in the form of a sworn affidavit or a certificate issued by the Companies and Intellectual Property Commission in the case of an Exempted Micro Enterprise (EME) with a total annual revenue of less than R3 million if issued in accordance with the amended Construction Sector Codes published in Notice 931 of 2017 of Government Gazette No. 41287 on 1 December 2017 by the Department of Trade and Industry; and - have a date of issue less than 12 (twelve) months prior to the original advertised tender closing date (see Tender Data C.2.15); and
4.	A valid BBBEE Certificates shall contain: <ul style="list-style-type: none"> - Name of enterprise as per enterprise registration documents issued by CIPC, and enterprise business address. - Value-Added Tax number, where applicable. - The B-BBEE Scorecard against which the certificate is issued, indicating all elements and scores achieved for each element. The actual score achieved must be linked to the total points as per the relevant Codes. - B-BBEE status with corresponding procurement recognition level. - The relevant Codes used to issue the B-BBEE verification certificate. - Date of issue and expiry (e.g. 9 June 2018 to 8 June 2019). Where a measured entity was subjected to a re-verification process, due to material change, the B-BBEE Verification Certificate must reflect the initial date of issue, date of re-issue and the initial date of expiry. Re-verification does not extend the lifespan of the B-BBEE Verification Certificate. - Financial period which was used to issue the B-BBEE Verification Certificate.
5.	A valid Sworn Affidavit shall contain: <ul style="list-style-type: none"> - Name/s of deponent as they appear in the identity document and the identity number. - Designation of the deponent as either the director, owner or member must be indicated in order to know that person is duly authorised to depose of an affidavit. - Name of enterprise as per enterprise registration documents issued by the CIPC, where applicable, and enterprise business address. - Percentage black ownership, black female ownership and whether they fall within a designated group. - Indicate total revenue for the year under review and whether it is based on audited financial statements or management accounts. - Financial year-end as per the enterprise's registration documents, which was used to determine the total revenue. The valid format of the Financial Year-End is Day/Month/Year - B-BBEE status level. An enterprise can only have one status level. - Date deponent signed and date of Commissioner of Oath must be the same. - Commissioner of Oath cannot be an employee or ex officio of the enterprise because, a person cannot by law, commission a sworn affidavit in which they have an interest, and
6.	Compliance with any other information requested to be attached to Returnable Schedule Form C1; and
7.	In the event of a Joint Venture (JV), a project-specific consolidated (SANRAL project number indicated) valid B-BBEE verification certificate in the name of the JV, issued by a verification agency accredited by the South African National Accreditation System (SANAS) shall be submitted.

Clause Number	Data
	<p>Sub-Regulation 6(5) and 7(5)</p> <p>If the tender documents indicate that the tenderer intends subcontracting more than 25% of the value of the contract to any other person not qualifying for at least the status level that the tenderer qualifies for, 0 (zero) points for preference shall be awarded, unless the intended subcontractor is an EME that has the capability to execute the subcontract and the value of the work is below the EME threshold.</p> <p>Criteria for breaking deadlock</p> <p>If two or more tenders score the same number of points and these tenders are also the highest ranked tenders, the tender with the highest preference points will be recommended for award.</p> <p>If functionality is part of the evaluation process and two or more tenders score equal total points and equal preference points, the tender that scored the highest points for functionality will be recommended for award.</p> <p>If two or more tenders score the same number of financial points and preference points and these tenders are also the highest ranked tenders, the tenderer to be recommended for award will be decided by the drawing of lots.</p>
C.3.13	<p>Acceptance of a tender offer</p> <p>The conditions stated in clauses C..13(a) to (f) of the Conditions of Tender as well as the following additional clauses C.3.13(g) to (k) shall be applied as objective criteria in terms of section 2(1)(f) of the Preferential Procurement Policy Framework Act, 2000 and as compelling and justifiable reasons in terms of Conditions of Tender clause 5.11:</p> <ul style="list-style-type: none"> g) the tenderer or any of its directors is not listed on the Register of Tender Defaulters in terms of the Prevention and Combating of Corrupt Activities Act of 2004 as a person prohibited from doing business with the public sector; h) the tenderer has not abused the Employer's supply chain management system; i) the tenderer has not failed to perform on any previous contract and has not been given a written notice to this effect; and j) the tenderer is tax compliant. The recommended tenderer who becomes non-compliant, prior to award, shall be notified and must become compliant within 7 working days of the date of being notified. A recommended tenderer who remains non-compliant after the 7 working days of being notified, shall be declared non-responsive. k) the tenderer is registered and in good standing with the compensation fund or with a licensed compensation insurer. The licensed compensation insurer shall be approved by Department of Labour in terms of Section 80 of the Compensation for Injury and Disease Act, 1993 (Act No. 130 of 1993). <p>In addition to the requirements under paragraph (b) of the Conditions of Tender, in the event that a due diligence is performed as part of the tender evaluation, the due diligence report will be used to evaluate the tenderer's ability to perform the contract as stated in paragraph (b). The due diligence will evaluate the overall risk associated with the tender. The due diligence will take into consideration the following:</p> <ul style="list-style-type: none"> - Assessment of financial statements to assess the financial position of the tenderer and its ability to obtain the necessary guarantees or insurances, - Evaluation of managerial and technical ability & available resources in relation to the proposed tender, - Integrity Risk Evaluation, - Operations, Activities, Locations and Key Customers, - Reference checks from previous clients, and - Risk rating (i.e. High Risk, Medium to High risk, Medium risk or Low risk) of the tenderer - Past Contracts comprising the following quantities of work completed satisfactorily and certified by the Engineer to demonstrate capacity and capability in relation to the proposed tender:

Clause Number	Data											
		<table><tr><th>COTO CHAPTER</th><th>DESCRIPTION</th><th>QUANTITY COMPLETED</th></tr><tr><td>5</td><td>Crushed stone base layers</td><td>15 000 m²</td></tr><tr><td>9</td><td>Asphalt Layers</td><td>82 000 m²</td></tr></table>	COTO CHAPTER	DESCRIPTION	QUANTITY COMPLETED	5	Crushed stone base layers	15 000 m²	9	Asphalt Layers	82 000 m²	
COTO CHAPTER	DESCRIPTION	QUANTITY COMPLETED										
5	Crushed stone base layers	15 000 m²										
9	Asphalt Layers	82 000 m²										
C.3.16	Registration of the award SANRAL will notify unsuccessful tenderers when the tender process has been concluded. Any unsuccessful tenderer may request a debriefing in writing as specified in clause C.3.18.											
C.3.17	Provide copies of the contracts The number of paper copies of the signed contract to be provided by the Employer is 1.											
C.3.18	Provide written reasons for actions taken All requests shall be in writing.											
SPECIAL CONDITIONS OF TENDER CLAUSES:												
Clause Number	Data											
SC3.19	Jurisdiction Unless stated otherwise in the tender data, each tenderer and the Employer undertake to accept the jurisdiction of the law courts of the Republic of South Africa.											

PART T2: RETURNABLE SCHEDULES

T.2.1 LIST OF RETURNABLE SCHEDULES

The tenderer must complete the following returnable schedules:

Notes to tenderer:

1. Returnable schedules have been based on the CIDB Standard for Uniformity in Construction Procurement and incorporate National Treasury requirements within them. Returnable schedules are separated into the following categories:
 - Forms, certificates and schedules for completion by the tenderer for use in the quantitative and qualitative evaluation of the tender (Forms A to E)
 - A list of all returnable documents for completion by the tenderer (Form F1)
2. Failure to submit fully completed relevant returnable documents may render such a tender offer non-responsive.
3. Tenderers shall note that their signature appended to each returnable form represents a declaration that they vouch for the accuracy and correctness of the information provided.
4. Notwithstanding any check or audit conducted by or on behalf of the Employer, the information provided in the returnable documents is accepted in good faith and as justification for entering into a contract with a tenderer. If subsequently any information is found to be incorrect such discovery shall be taken as wilful misrepresentation by that tenderer to induce the contract. In such event:
 - a. the Employer shall inform the tenderer and give the tenderer an opportunity to make representations within 14 days as to why the tender submitted should not be disqualified and as to why the tenderer should not be restricted by the National Treasury from conducting any business with any organ of state for a period not exceeding 10 years;
 - b. if the Employer has already entered into a contract with the Tenderer, the Employer has the discretionary right under FIDIC Particular Condition 15.2(g) to terminate the contract.
5. These forms must be completed in non-erasable ink and any alterations made prior to tender closure countersigned by an authorised signatory.

TABLE OF CONTENTS	PAGE
<u>FORM A1: CERTIFICATE CONFIRMING THAT THE TENDERER READ THE PRESENTATION BRIEFING</u>	T-27
<u>FORM A1.1: CERTIFICATE OF INTENTION TO SUBMIT A TENDER</u>	T-28
<u>FORM A2.1: CERTIFICATE OF AUTHORITY FOR SIGNATORY</u>	T-29
<u>FORM A2.2: DECLARATION OF TENDERER'S CURRENT STATUS OF ANY DEBT OUTSTANDING TO SANRAL</u>	T-30
<u>FORM A2.3: CERTIFICATE OF SINGLE TENDER SUBMISSION</u>	T-31
<u>FORM A2.4: CERTIFICATE OF FRONTING PRACTICES</u>	T-32
<u>FORM A2.5: DECLARATION OF DOMESTIC PROMINENT INFLUENTIAL PERSONS, FOREIGN PROMINENT PUBLIC OFFICIALS AND FOREIGN INFLUENTIAL NATIONALS (DPIPS, FPPOS & FINS)</u>	T-34
<u>FORM A2.6: CERTIFICATE OF PERMISSION TO CONDUCT DUE DILIGENCE INVESTIGATION</u>	T-37
<u>FORM A3.1: BIDDER'S DISCLOSURE</u>	T-38
<u>FORM A3.2: CERTIFICATE OF INDEPENDENT TENDER (INCORPORATING SBD9) – REPEALED & NOT APPLICABLE</u>	T-41
<u>FORM A3.3: DECLARATION OF TENDERER'S PAST SUPPLY CHAIN MANAGEMENT PRACTICES (INCORPORATING SBD8)- REPEALED & NOT APPLICABLE</u>	T-43
<u>FORM A3.4: REGISTRATION ON NATIONAL TREASURY CENTRAL SUPPLIER DATABASE</u>	T-45
<u>FORM A3.5: DECLARATION CERTIFICATE FOR LOCAL PRODUCTION AND CONTENT FOR DESIGNATED SECTORS (SBD 6.2)</u>	T-46
<u>FORM A3.6: LOCAL CONTENT DECLARATION: SUMMARY SCHEDULE (ANNEXURE C)</u>	T-52
<u>FORM A4: SCHEDULE OF DEVIATIONS OR QUALIFICATIONS BY TENDERER</u>	T-54
<u>FORM A5: SCHEDULE OF ADDENDA TO TENDER DOCUMENTS</u>	T-55
<u>FORM A6: CERTIFICATE OF TAX COMPLIANCE (INCORPORATING SBD2)</u>	T-56
<u>FORM A7: CERTIFICATE OF INSURANCE COVER</u>	T-57
<u>FORM A8: TENDERER'S REGISTERED FINANCIAL SERVICE PROVIDER LETTER AND BANK DETAILS</u>	T-58
<u>FORM A9.1: SCHEDULE OF TENDERER'S LITIGATION HISTORY</u>	T-60
<u>FORM A9.2: ENVIRONMENTAL, SOCIAL, HEALTH, AND SAFETY PERFORMANCE DECLARATION</u>	T-61
<u>FORM A10: SCHEDULE OF CURRENT COMMITMENTS</u>	T-62
<u>FORM A11: CERTIFICATE OF COMPLIANCE WITH COMPENSATION FOR OCCUPATIONAL INJURIES AND DISEASES ACT, 1993 (ACT NO. 130 OF 1993)</u>	T-63
<u>FORM A12: CERTIFICATE OF REGISTRATION WITH CIDB</u>	T-64
<u>FORM A13: FORM SBD1 – INVITATION TO BID AND TERMS AND CONDITIONS FOR BIDDING</u>	T-65
<u>FORM B1: CONTRACTOR'S ESTABLISHMENT ON SITE</u>	T-67
<u>FORM B2: SCHEDULE OF SPECIAL MATERIALS</u>	T-68
	T-25

<u>FORM C1.1:</u>	<u>TENDERER'S B-BBEE VERIFICATION CERTIFICATE</u>	T-69
<u>FORM C1.2:</u>	<u>PREFERENCE POINTS CLAIM FORM IN TERMS OF THE PREFERENTIAL PROCUREMENT REGULATIONS 2017 (INCORPORATING SBD6.1)</u>	T-71
<u>FORM D1:</u>	<u>SCHEDULE OF TENDERER'S PLANT AND EQUIPMENT</u>	T-75
<u>FORM D2:</u>	<u>TENDERER'S METHOD STATEMENT</u>	T-76
<u>FORM D3:</u>	<u>TENDERER'S ORGANISATION AND STAFFING</u>	T-77
<u>FORM D4.1:</u>	<u>TENDERER'S KEY PERSONNEL EXPERIENCE (CONTRACTS DIRECTOR)</u>	T-78
<u>FORM D4.2:</u>	<u>TENDERER'S KEY PERSONNEL EXPERIENCE (CONTRACTS MANAGER)</u>	T-80
<u>FORM D4.3:</u>	<u>TENDERER'S KEY PERSONNEL EXPERIENCE (CONSTRUCTION MANAGER (CONTRACTOR'S REPRESENTATIVE))</u>	T-82
<u>FORM D5.1:</u>	<u>TENDERER'S EXPERIENCE BASED ON COMPLETED PROJECTS</u>	T-84
<u>FORM D5.2:</u>	<u>TENDERER'S EXPERIENCE BASED ON PROJECTS IN PROGRESS</u>	T-86
<u>FORM D6:</u>	<u>TENDERER'S INDICATIVE PROGRAM</u>	T-88
<u>FORM D7:</u>	<u>SCHEDULE OF ESTIMATED MONTHLY EXPENDITURE</u>	T-89
<u>FORM D8:</u>	<u>SCHEDULE OF SUBCONTRACTORS</u>	T-90
<u>FORM D9:</u>	<u>CORPORATE SOCIAL INVESTMENT</u>	T-91
<u>FORM E1:</u>	<u>QUALITY ASSURANCE: UTFC</u>	T-92
<u>FORM E2:</u>	<u>PERFORMANCE REPORT: UTFC</u>	T-94
<u>FORM E3:</u>	<u>CONSTRAINTS FOR UTFC PRODUCTS AND PROCESSES</u>	T-95
<u>FORM E4:</u>	<u>WIRE ROPE INFORMATION</u>	T-96
<u>FORM E5:</u>	<u>PHOTOMETRIC FILES</u>	T-97
<u>FORM E6:</u>	<u>LAMP LIFESPAN</u>	T-114
<u>FORM E7:</u>	<u>ELECTRICAL SCHEDULE OF MATERIALS</u>	T-115
<u>FORM F1:</u>	<u>SCHEDULE OF TENDER COMPLIANCE</u>	T-117

FORM A1: CERTIFICATE CONFIRMING THAT THE TENDERER READ THE PRESENTATION BRIEFING

CONTRACT SANRAL R.033-130-2019/3
FOR THE UPGRADING OF NATIONAL ROAD R33 SECTION 13 IN VAALWATER TOWN (KM 60.8 TO KM 63.0)

This is to certify that I,

.....

representative of (tenderer)

of (address)

.....

.....

telephone number

fax number

e-mail.....

read the clarification presentation presented by the Employer online.

attended the clarification meeting on (28 November 2022)

.....

conducted by

in the presence of (Employer's representative)

EMPLOYER'S REPRESENTATIVE

(Signature).....Date.....

TENDERER'S REPRESENTATIVE (Signature)

FORM A1.1: CERTIFICATE OF INTENTION TO SUBMIT A TENDER

CONTRACT SANRAL R.033-130-2019/3
FOR THE UPGRADING OF NATIONAL ROAD R33 SECTION 13 IN VAALWATER TOWN (KM 60.8
TO KM 63.0)

Notes to Tenderer:

1. The duly completed certificate of intention to submit a tender must be submitted by whoever intends to tender for this particular tender by 25 November 2022 Failure to submit the certificate of intention to tender within the required period may render the tenderer non-responsive and SANRAL does not accept responsibility for any communication not received by the tenderer timeously.
2. Late notification of intention to tender by a prospective tenderer will not necessarily result in the tender closing date being extended.
3. Should you intend to submit a tender for this particular tender please sign the certificate, scan and email the completed document to the email address indicated in T1.1 of this tender document.
4. The Employer shall send all correspondence, including Addenda, only to the Tenderer's email address as provided herein.

This is to certify that I,

.....

representative of (insert name of tenderer)

of (address)

.....

.....

telephone number

fax number

e-mail:

intends to submit a tender in response to the tender notice and invitation for tender this contract.

TENDERER'S REPRESENTATIVE (Signature):

DATE:

FORM A2.1: CERTIFICATE OF AUTHORITY FOR SIGNATORY

CONTRACT SANRAL R.033-130-2019/3
FOR THE UPGRADING OF NATIONAL ROAD R33 SECTION 13 IN VAALWATER TOWN (KM 60.8
TO KM 63.0)

Notes to tenderer:

1. The signatory for the tenderer shall confirm his/her authority thereto by attaching on the tendering company's letterhead a duly signed and dated copy of the relevant resolution of the board of directors/partners.
2. In the event that the tenderer is a joint venture, a certificate is required from each member of the joint venture clearly setting out:
 - authority for signatory,
 - undertaking to formally enter into a joint venture contract should an award be made to the joint venture,
 - name of designated lead member of the intended joint venture, as required by tender condition C.2.13.4.
3. The resolution below is given as an example of an acceptable format for authorisation, but submission of this page with the example completed shall not be accepted as authorisation of the tenderer's signatory.

By resolution of the board of directors passed at a meeting held on

Mr/Ms
whose signature appears below, has been duly authorised to sign all documents in connection with the tender for

Contract SANRAL R.033-130-2019/3
THE UPGRADING OF NATIONAL ROAD R33 SECTION 13 IN VAALWATER TOWN (KM 60.8 TO KM 63.0)

and any contract which may arise therefrom on behalf of *enter name of tenderer in block capitals*

SIGNED ON BEHALF OF THE COMPANY:.....

IN HIS/HER CAPACITY AS:

DATE:

SIGNATURE OF SIGNATORY:

WITNESS:

SIGNATURE

SIGNATURE

NAME (PRINT)

NAME (PRINT)

**FORM A2.2: DECLARATION OF TENDERER'S CURRENT STATUS OF ANY DEBT
OUTSTANDING TO SANRAL**

CONTRACT SANRAL R.033-130-2019/3
FOR THE UPGRADING OF NATIONAL ROAD R33 SECTION 13 IN VAALWATER TOWN (KM 60.8
TO KM 63.0)

Notes to tenderer:

- 1. The signatory for the tenderer shall complete and sign this form declaring the current status of any debt outstanding to SANRAL.**
- 2. In the event that the tenderer is a Joint Venture, a declaration is required from each member of the Joint Venture.**

I, the undersigned declare that:

- (i) the tenderer or any of its Directors/Members do not have any debt outstanding to SANRAL, other than what is listed below:

.....
.....
.....
.....
.....

- (ii) the tenderer and/or any of its Directors/Members freely, voluntarily and without undue duress unconditionally authorises the SANRAL to set off any debts agreed to which is due and payable by the tenderer or any of its Directors/Members in terms of this declaration against any moneys due to the tenderer or any of its Directors/Members; and

- (iii) to the best of my knowledge the above information is true and accurate.

SIGNATURE:

Signed and sworn before me at on the day of
..... 20...

The deponent having:

- i) acknowledged that he/she knows and understands the contents hereof;
- ii) confirmed that he/she has no objection to the taking of the prescribed oath;
- iii) confirmed that he/she considered the prescribed oath as binding upon his/her conscience; and
- iv) confirmed that the Regulations contained in the Government Gazette Notice R1258 of July 1972 and R1648 of August 1977 have been complied with.

COMMISSIONER OF OATHS

FORM A2.3: CERTIFICATE OF SINGLE TENDER SUBMISSION

CONTRACT SANRAL R.033-130-2019/3
FOR THE UPGRADING OF NATIONAL ROAD R33 SECTION 13 IN VAALWATER TOWN (KM 60.8
TO KM 63.0)

Notes to tenderer:

1. This certificate serves as a declaration by the tenderer that a single tender was submitted.
2. In the case of a Joint Venture (JV), a separate certificate is to be completed and submitted by each JV member.

DECLARATION

I, the undersigned, in submitting the accompanying tender on behalf of the tenderer do hereby make the following statements that I certify to be true and complete in every respect:

1. I have read and understand the notes to, and the contents of, this certificate.
2. I understand that the accompanying tender and any other tender shall be disqualified in the event that I, including a Joint Venture partner, or Key Person participate in more than 1 (one) tender.

SIGNATURE:

DATE:

NAME:

POSITION:

FORM A2.4: CERTIFICATE OF FRONTING PRACTICES

CONTRACT SANRAL R.033-130-2019/3

FOR THE UPGRADING OF NATIONAL ROAD R33 SECTION 13 IN VAALWATER TOWN (KM 60.8 TO KM 63.0)

Fronting Practices

Window-dressing: This includes cases in which black people are appointed or introduced to an enterprise on the basis of tokenism and may be:

- Discouraged or inhibited from substantially participating in the core activities of an enterprise; and
- Discouraged or inhibited from substantially participating in the stated areas and/or levels of their participation;

Benefit Diversion: This includes initiatives implemented where the economic benefits received as a result of the B-BBEE Status of an enterprise do not flow to black people in the ratio as specified in the relevant legal documentation.

Opportunistic Intermediaries: This includes enterprises that have concluded agreements with other enterprises with a view to leveraging the opportunistic intermediary's favourable B-BBEE status in circumstances where the agreement involves:

- Significant limitations or restrictions upon the identity of the opportunistic intermediary's suppliers, service providers, clients or customers;
- The maintenance of their business operations in a context reasonably considered improbable having regard to resources; and
- Terms and conditions that are not negotiated at arms-length on a fair and reasonable basis.

Responsibility to Report Fronting

In order to effectively deal with the scourge of Fronting, verification agencies, and/or procurement officers and relevant decision makers are encouraged to obtain a signed declaration from the clients or entities that they verify or provide business opportunities to, which states that the client or entity understands and accepts that the verification agency, procurement officer or relevant decision maker may report Fronting practices to **the DTI**. Intentional misrepresentation by measured entities may constitute fraudulent practices, public officials and verification agencies are to report such cases to **the DTI**.

Fronting Indicators

•	The black people identified by an enterprise as its shareholders, executives or management are unaware or uncertain of their role within an enterprise;
•	The black people identified by an enterprise as its shareholders, executives or management have roles of responsibility that differ significantly from those of their non-black peers;
•	The black people who serve in executive or management positions in an enterprise are paid significantly lower than the market norm, unless all executives or management of an enterprise are paid at a similar level;
•	There is no significant indication of active participation by black people identified as top management at strategic decision making level;
•	An enterprise only conducts peripheral functions and does not perform the core functions reasonably expected of other, similar, enterprises;
•	An enterprise relies on a third-party to conduct most core functions normally conducted by enterprises similar to it;

•	An enterprise cannot operate independently without a third-party, because of contractual obligations or the lack of technical or operational competence;
•	The enterprise displays evidence of circumvention or attempted circumvention;
•	An enterprise buys goods or services at a significantly different rate than the market from a related person or shareholder;
•	An enterprise obtains loans, not linked to the good faith share purchases or enterprise development initiatives, from a related person at an excessive rate; and
•	An enterprise shares all premises and infrastructure with a related person, or with a shareholder with no B-BBEE status or a third-party operating in the same industry where the cost of such premises and infrastructure is disproportionate to market-related costs.

DECLARATION

I, the undersigned, in submitting the accompanying tender on behalf of the tenderer do hereby make the following statements that I certify to be true and complete in every respect:

1. I have read and understand the contents of this certificate.
2. I accept that the Employer may report fronting practices to the Department of Trade and Industry and the B-BBEE commissioner.
3. I accept that intentional misrepresentation by measured entities may constitute fraudulent practices that shall be reported to the Department of Trade and Industry and the B-BBEE commissioner.

SIGNATURE:

DATE:

NAME:

POSITION:

FORM A2.5: DECLARATION OF DOMESTIC PROMINENT INFLUENTIAL PERSONS, FOREIGN PROMINENT PUBLIC OFFICIALS AND FOREIGN INFLUENTIAL NATIONALS (DPIPs, FPPOs & FINs)

CONTRACT SANRAL R.033-130-2019/3

FOR THE UPGRADING OF NATIONAL ROAD R33 SECTION 13 IN VAALWATER TOWN (KM 60.8 TO KM 63.0)

Notes to tenderer:

1. In line with a policy on Domestic Prominent Influential Persons (DPIP's), Foreign Prominent Public Officials (FPPO's) & Foreign Influential Nationals (FIN's), the purpose of this declaration form is to ensure maintenance and monitoring of the business relationships with prominent, influential stakeholders who have domestic and/or foreign influence as far as the procurement under the management of SANRAL is concerned. This is done to mitigate SANRAL's perceived association, reputational, operational or legal risk, as it strives to foster and maintain fair and transparent business relations. (The policy is available on SANRAL website: www.nra.co.za)
2. It is compulsory that all prospective and existing bidders conducting business with SANRAL, who potentially meet the definition of DPIPs, FPPOs or FINs, complete this form by supplying credible information as required and submit together with their bid document.
3. Bidders are required at the tender stage to declare any DPIPs, FPPOs or FINs involved in their bids, as part of their submission.
4. Further, that bidders shall at the tender stage furnish SANRAL of all information relating to namely, shareholders names, ID numbers and share certificates of the individual and/or transaction concerned using, the form below, for verification purposes, including where applicable, confirmation as it relates to:
 - 4.1. Knowledge of any offence within the meaning of Chapter 2 section 12 & 13 of Prevention and Combating of Corrupt Practices Act no 4 of 2006; and or
 - 4.2. Knowledge of any offence within the meaning of chapter 3 of Prevention of Organised Crime Act no. 121 of 1998 as it relates to any of the shareholders, Directors, Owners and/or individual link to the bidder.
5. Bidders undertake that should it be discovered that the information provided in the form below, is fraudulently or negligently misrepresented then Chapter 9 sec 214 & 216 of Companies Act no 17 of 2008 shall apply to shareholders, Directors, Owners and/or individual link to the bidder.
6. Should the bidder fail to declare or supply SANRAL with credible information in the prescribed form, the bid may be rendered invalid.
7. Should the SANRAL, in the process of conducting verification and investigation of information supplied by the bidder find out that the information poses a reputational risk, the bid shall be rendered invalid.
8. The following definitions shall apply:
 - 8.1. "Board" means the Board of Directors or the Accounting Authority of SANRAL
 - 8.2. "Business relationship" means the connection formed between SANRAL and external stakeholders for commercial purposes.
 - 8.3. "DD" means Due Diligence which is defined for this form as:
 - a) the verification of disclosures in the disclosure form, including if the disclosure is "none"; and
 - b) further investigation if any areas of risk are identified from publicly available information.
 - 8.4. "Domestic Prominent Influential Person" means an individual who holds an influential position, including in an acting position for a period exceeding six months, or has held at any time in the preceding twelve months, in the Republic, as defined in the Financial Intelligence Centre Amendment Act (No.1 of 2017).
 - 8.5. "DPIP" means a Domestic Prominent Influential Person.
 - 8.6. "Family members and known close associates" means immediate family members and known close associates of a person in a foreign or domestic prominent position, as the case may be, as defined in the Financial Intelligence Amendment Act, No.1 of 2017).
 - 8.7. "Foreign Influential National" means an individual who is not a South African citizen or does not have a permanent residence permit issued in terms of the Immigration Act (No.13 of 2002), who possesses personal power that induces another person to give consideration or to act on any basis other than the merits of the matter.

- 8.8. "Foreign Prominent Public Official" means (as defined in the Financial Intelligence Centre Amendment Act (No.1 of 2017) an individual who holds, or has held at any time in the preceding twelve months, in any foreign country a prominent public function
- 8.9. "FPPO" means a Foreign Prominent Public Official.
- 8.10. "Improper influence" means personal power that induces another person to give consideration or to act on any basis other than the merits of the matter.
- 8.11. "PIP" means Prominent Influential Person and includes DPIP, FPPO and FIN
- 8.12. "SANRAL" means the South African National Roads Agency SOC Limited, with registration number 1998/009584/30.
- 8.13. "Senior Management" means the Executive Committee or its individual members.
9. A separate declaration is required from each PIP. In the event that the tenderer is a Joint Venture, a separate declaration from each PIP from each of the Joint Venture members, is required.

Prominent Influential Persons (PIP's) Reporting Form

IDENTIFICATION PARTICULARS				
Primary Particulars	First Name	Surname	Middle Name	ID/Passport Number
Country Details	Country of Origin	Citizenship	Current Country of Residence	
CURRENT STATUS AND BACKGROUND				
Current Occupation	Occupational Title		Status	
			Active	Non-active
Is the potential/business partner (mark with an "X" whichever is applicable):				
a DPIP	a FPPO	a FIN	Family member or Close Associate of a DPIP/FPPO/FIN?	
KNOWN BUSINESS INTERESTS				
No	Name of Entity	Role in Entity	Status	
1			Active	Non-active
2				
3				
4				
5				
6				
7				
8				
9				
10				

MEDIA REPORTS / OTHER SOURCES OF INFORMATION
(Please reference all known negative or damaging media reports associated with the DPIIP/FPPO/FIN)

Reporting Person/s:

Full names:		
Designation:		
Department:		
Head of Department:		
Head of Department's signature:	Date:	
Reporting Person's signature:	Date:	

DECLARATION / UNDERTAKING BY THE TENDERER

I, the undersigned declare that:

i) the information furnished on this declaration form is true and correct,

and

ii) I accept that any action may be taken against me should this declaration prove to be false.

SIGNATURE:

NAME:

POSITION:

DATE:

NAME OF TENDERER:

FORM A2.6: CERTIFICATE OF PERMISSION TO CONDUCT DUE DILIGENCE INVESTIGATION

CONTRACT SANRAL R.033-130-2019/3
FOR THE UPGRADING OF NATIONAL ROAD R33 SECTION 13 IN VAALWATER TOWN (KM 60.8
TO KM 63.0)

Notes to tenderer:

1. The tenderer shall complete the declaration below.
2. In the case of a Joint Venture (JV), each member of the JV shall comply with the above requirements.

DECLARATION

I, (name)
the undersigned in my capacity as (position)
on behalf of (name of company),
herewith grant consent that SANRAL or any of their appointed Service Providers may conduct a due
diligence investigation on (name of company)
to evaluate our ability to perform the contract as stipulated in the Standard Conditions of Tender, Clause
C.3.13(b).

In addition, any information in this regard requested by SANRAL or any of their appointed Service
Providers, shall be submitted within the timelines of the request.

SIGNATURE:

DATE:

NAME:

POSITION:

Notes to tenderer:

1. Definitions:

1.1. "State" means:

- i) any National or Provincial Department, National or Provincial Public Entity or Constitutional Institution within the meaning of the Public Finance Management Act, 1999 (Act No 1 of 1999);
- ii) any Municipality of Municipal Entity;
- iii) Provincial Legislature;
- iv) National Assembly or the National Council of Provinces; or
- v) Parliament.
- vi) "Shareholder" means a person who owns shares in the company and is actively involved in the management of the enterprise or business and exercises control over the enterprise.

1.2. "Shareholder" means a person who owns shares in the company and is actively involved in the management of the enterprise or business and exercises control over the enterprise.

- 2. In the case of a joint venture (JV), a separate declaration form is to be completed and submitted by each JV member.
- 3. If the Form is omitted or blank; or if the tenderer found to have failed to declare conflict or declare false information, The tender will be declared non-responsive and should it be discovered after the award of a contract, contract maybe terminated and tenderer will be ultimately blacklisted.

PURPOSE OF THE FORM

Any person (natural or juristic) may make an offer or offers in terms of this invitation to bid. In line with the principles of transparency, accountability, impartiality, and ethics as enshrined in the Constitution of the Republic of South Africa and further expressed in various pieces of legislation, it is required for the bidder to make this declaration in respect of the details required hereunder.

Where a person/s are listed in the Register for Tender Defaulters and / or the List of Restricted Suppliers, that person will automatically be disqualified from the bid process.

BIDDER'S DECLARATION

Is the bidder, or any of its directors / trustees / shareholders / members / partners or any person having a controlling interest¹ in the enterprise, employed by the state?

YES/NO

If so, furnish particulars of the names, individual identity numbers, and, if applicable, state employee numbers of sole proprietor/ directors / trustees / shareholders / members/ partners or any person having a controlling interest in the enterprise, in table below.

Full Name	Identity Number	Name of State institution

¹ the power, by one person or a group of persons holding the majority of the equity of an enterprise, alternatively, the person/s having the deciding vote or power to influence or to direct the course and decisions of the enterprise.

Do you, or any person connected with the bidder, have a relationship with any person who is employed by the procuring institution?

YES/NO

If so, furnish particulars:

.....
.....

Does the bidder or any of its directors / trustees / shareholders / members / partners or any person having a controlling interest in the enterprise have any interest in any other related enterprise whether or not they are bidding for this contract?

YES/NO

If so, furnish particulars:

.....
.....

DECLARATION

I, the undersigned, (name)..... in submitting the accompanying bid, do hereby make the following statements that I certify to be true and complete in every respect:

I have read and I understand the contents of this disclosure;

I understand that the accompanying bid will be disqualified if this disclosure is found not to be true and complete in every respect;

The bidder has arrived at the accompanying bid independently from, and without consultation, communication, agreement or arrangement with any competitor. However, communication between partners in a joint venture or consortium² will not be construed as collusive bidding.

In addition, there have been no consultations, communications, agreements or arrangements with any competitor regarding the quality, quantity, specifications, prices, including methods, factors or formulas used to calculate prices, market allocation, the intention or decision to submit or not to submit the bid, bidding with the intention not to win the bid and conditions or delivery particulars of the products or services to which this bid invitation relates.

The terms of the accompanying bid have not been, and will not be, disclosed by the bidder, directly or indirectly, to any competitor, prior to the date and time of the official bid opening or of the awarding of the contract.

There have been no consultations, communications, agreements or arrangements made by the bidder with any official of the procuring institution in relation to this procurement process prior to and during the bidding process except to provide clarification on the bid submitted where so required by the institution; and the bidder was not involved in the drafting of the specifications or terms of reference for this bid.

I am aware that, in addition and without prejudice to any other remedy provided to combat any restrictive practices related to bids and contracts, bids that are suspicious will be reported to the Competition Commission for investigation and possible imposition of administrative penalties in terms of section 59 of the Competition Act No 89 of 1998 and or may be reported to the National Prosecuting Authority (NPA) for criminal investigation and or may be restricted from conducting business with the public sector for a period not exceeding ten (10) years in terms of the Prevention and Combating of Corrupt Activities Act No 12 of 2004 or any other applicable legislation.

I CERTIFY THAT THE INFORMATION FURNISHED IN PARAGRAPHS 1, 2 and 3 ABOVE IS CORRECT.

I ACCEPT THAT THE STATE MAY REJECT THE BID OR ACT AGAINST ME IN TERMS OF PARAGRAPH 6 OF PFMA SCM INSTRUCTION 03 OF 2021/22 ON PREVENTING AND COMBATING ABUSE IN THE SUPPLY CHAIN MANAGEMENT SYSTEM SHOULD THIS DECLARATION PROVE TO BE FALSE.

² Joint venture or Consortium means an association of persons for the purpose of combining their expertise, property, capital, efforts, skill and knowledge in an activity for the execution of a contract.

.....	
Signature	Date
.....	
Position	Name of bidder

FORM A3.2: CERTIFICATE OF INDEPENDENT TENDER (INCORPORATING SBD9) – NOT APPLICABLE

CONTRACT SANRAL R.033-130-2019/3
FOR THE UPGRADING OF NATIONAL ROAD R33 SECTION 13 IN VAALWATER TOWN (KM 60.8 TO KM 63.0)

Notes to tenderer:

1. This certificate conforms to Treasury Regulation 16A9 and the requirement of section 4(1)(b)(iii) of the Competition Act No. 89 of 1998, as amended, that prohibits an agreement between, or concerted practice by, firms, or a decision by an association of firms, if it is between parties in a horizontal relationship and if it involves collusive tendering.
2. Collusive tendering is a conspiracy between businesses that would normally be expected to compete, to agree not to compete, in a tender process.
3. This certificate serves as a declaration by the tenderer that the tender submitted is free from any collusion with a competitor.
4. In the case of a joint venture (JV), a separate certificate is to be completed and submitted by each JV member.
5. If the tenderer is found to have failed to declare conflict of interest or have declared false information, the tender will be declared non-responsive and should it be discovered after contract award, will be ultimately blacklisted.

Declaration

I, the undersigned, in submitting the accompanying tender on behalf of the tenderer do hereby make the following statements that I certify to be true and complete in every respect:

1. I have read and understand the notes to, and the contents of, this Certificate;
2. I understand that the accompanying tender will be disqualified if this Certificate is found to be not true and complete in every respect;
3. I am authorised by the tenderer to sign this Certificate, and to submit the accompanying tender, on behalf of the tenderer;
4. Each person whose signature appears on the accompanying tender has been authorised by the tenderer to determine the terms of, and to sign the tender, on behalf of the tenderer;
5. For the purposes of this Certificate and the accompanying tender, I understand that the word "competitor" shall include any individual or organisation, other than the tenderer, whether or not affiliated with the tenderer, who:
 - a) has been requested to submit a tender in response to this tender invitation;
 - b) could potentially submit a tender in response to this tender invitation, based on their qualifications, abilities or experience; and
 - c) provides the same goods and services as the tenderer and/or is in the same line of business as the tenderer.
6. The tenderer has arrived at the accompanying tender independently from, and without consultation, communication, agreement or arrangement with any competitor. However, communication between partners in a joint venture or consortium will not be construed as collusive tendering.
7. In particular, without limiting the generality of statement 6 above, there has been no consultation, communication, agreement or arrangement with any competitor regarding:
 - a) prices;
 - b) geographical area where product or service will be rendered (market allocation);

- c) methods, factors or formulas used to calculate prices;
 - d) the intention or decision to submit, or not to submit, a tender;
 - e) the submission of a tender which does not meet the specifications and conditions of the tender; or
 - f) tendering with the intention not to win the tender.
8. In addition, there have been no consultations, communications, agreements or arrangements with any competitor regarding the quality, quantity, specifications and conditions or delivery particulars of the products or services to which this tender relates.
9. The terms of the accompanying tender have not been, and will not be, disclosed by the tenderer, directly or indirectly, to any competitor, prior to the date and time of the official tender opening or of the awarding of the contract.
10. I am aware that, in addition and without prejudice to any other remedy provided to combat any restrictive practices related to tenders and contracts, tenders that are suspicious will be reported to the Competitions Commission for investigation and possible imposition of administrative penalties in terms of section 59 of the Competition Act No. 89 of 1998 and/or may be reported to the National Prosecuting Authority for criminal investigation and/or may be restricted from conducting business with the public sector for a period not exceeding ten (10) years in terms of the Prevention and Combating of Corrupt Activities Act No. 12 of 2004 or any other applicable legislation.

SIGNATURE:

DATE:

NAME:

POSITION:

FORM A3.3: DECLARATION OF TENDERER'S PAST SUPPLY CHAIN MANAGEMENT PRACTICES (INCORPORATING SBD8) – NOT APPLICABLE

CONTRACT SANRAL R.033-130-2019/3
FOR THE UPGRADING OF NATIONAL ROAD R33 SECTION 13 IN VAALWATER TOWN (KM 60.8 TO KM 63.0)

Notes to tenderer:

1. **This declaration:**
 - a) must form part of all tenders submitted.
 - b) in the case of a joint venture (JV), must be completed and submitted by each member of the JV.
2. This form serves as a declaration to be used by institutions in ensuring that when goods and services are being procured, all reasonable steps are taken to combat the abuse of the supply chain management system.
3. The tender of any tenderer may be disregarded if that tenderer or any of its directors have:
 - (a) abused the institution's supply chain management system;
 - (b) committed fraud or any other improper conduct in relation to such system; or
 - (c) failed to perform on any previous contract.
4. If the Form is omitted or blank, the tender will be declared non-responsive.
5. In order to give effect to the above, the following questionnaire must be completed and submitted with this tender.

4.1	Is the tenderer or any of its directors listed on the National Treasury's Database of Restricted Suppliers as companies or persons prohibited from doing business with the public sector? Companies or persons who are listed on this Database were informed in writing of this restriction by the Accounting Officer/ Authority of the institution that imposed the restriction after the <i>audi alteram partem</i> rule was applied. The Database of Restricted Suppliers now resides on the National Treasury website (www.treasury.gov.za) and can be accessed by clicking on its link at the bottom of the home page.	Yes <input type="checkbox"/>	No <input type="checkbox"/>
4.1.1	If Yes, furnish particulars:		
4.2	Is the tenderer or any of its directors listed on the Register for Tender Defaulters in terms of Section 29 of the Prevention and Combating of Corrupt Activities Act (No. 12 of 2004)? The Register for Tender Defaulters can be accessed on the National Treasury website (www.treasury.gov.za) by clicking on its link at the bottom of the home page.	Yes <input type="checkbox"/>	No <input type="checkbox"/>
4.2.1	If Yes, furnish particulars:		
4.3	Was the tenderer or any of its directors convicted by a court of law (including a court outside the Republic of South Africa) for fraud or corruption during the past five years?	Yes <input type="checkbox"/>	No <input type="checkbox"/>
4.3.1	If Yes, furnish particulars:		

4.4	Was any contract between the tenderer and any organ of State terminated during the past five years on account of failure to perform on or comply with the contract?	Yes <input type="checkbox"/>	No <input type="checkbox"/>
4.4.1	If Yes, furnish particulars:		

CERTIFICATION

I, the undersigned,
certify that the information furnished on this declaration form is true and correct.

I accept that, in addition to cancellation of a contract, action may be taken against me should this declaration prove to be false.

SIGNATURE:

NAME:

POSITION:

DATE:

NAME OF TENDERER:

FORM A3.4: REGISTRATION ON NATIONAL TREASURY CENTRAL SUPPLIER DATABASE

CONTRACT SANRAL R.033-130-2019/3
FOR THE UPGRADING OF NATIONAL ROAD R33 SECTION 13 IN VAALWATER TOWN (KM 60.8
TO KM 63.0)

The tenderer shall provide a scanned copy in .pdf of the Active Supplier Listing on the National Treasury Central Supplier Database (www.treasury.gov.za). In the case of a Joint Venture (JV), the tenderer shall provide scanned copies in .pdf of the Active Supplier Listing on the National Treasury Central Supplier Database for each member of the Joint Venture.

Name of Contractor:

Central Supplier Database Supplier Number:

Supplier Commodity:

Delivery Location:

SIGNED BY TENDERER:

FORM A3.5: DECLARATION CERTIFICATE FOR LOCAL PRODUCTION AND CONTENT FOR DESIGNATED SECTORS (SBD 6.2)

CONTRACT SANRAL R.033-130-2019/3
FOR THE UPGRADING OF NATIONAL ROAD R33 SECTION 13 IN VAALWATER TOWN (KM 60.8 TO KM 63.0)

Notes to Tenderer

- 1. If the minimum threshold/s % local content is below the stipulated minimum threshold for local production and content, or if the Form is omitted, the tender will be declared non-responsive.**

This Standard Bidding Document (SBD) must form part of all bids invited. It contains general information and serves as a declaration form for local content (local production and local content are used interchangeably).

Before completing this declaration, bidders must study the General Conditions, Definitions, Directives applicable in respect of Local Content as prescribed in the Preferential Procurement Regulations, 2017, the South African Bureau of Standards (SABS) approved technical specification number SANS 1286:2017 and the Guidance on the Calculation of Local Content together with the Local Content Declaration Templates [Annex C (Local Content Declaration: Summary Schedule), D (Imported Content Declaration: Supporting Schedule to Annex C) and E (Local Content Declaration: Supporting Schedule to Annex C)].

1. General Conditions

- 1.1. Preferential Procurement Regulations, 2017 (Regulation 8) makes provision for the promotion of local production and content.
- 1.2. Regulation 8(2) prescribes that in the case of designated sectors, organs of state must advertise such tenders with the specific bidding condition that only locally produced or manufactured goods, with a stipulated minimum threshold for local production and content will be considered.
- 1.3. Where necessary, for bids referred to in paragraph 1.2 above, a two-stage bidding process may be followed, where the first stage involves a minimum threshold for local production and content and the second stage price and B-BBEE.
- 1.4. A person awarded a contract in relation to a designated sector, may not sub-contract in such a manner that the local production and content of the overall value of the contract is reduced to below the stipulated minimum threshold.
- 1.5. The local content (LC) expressed as a percentage of the bid price must be calculated in accordance with the SABS approved technical specification number SANS 1286:2017 as follows:

$$LC = [1 - x / y] * 100$$

Where:

x is the imported content in Rand

y is the bid price in Rand excluding value added tax (VAT)

Prices referred to in the determination of x must be converted to Rand (ZAR) by using the exchange rate published by South African Reserve Bank (SARB) on the date of advertisement of the bid as indicated in paragraph 3.1 below.

The SABS approved technical specification number SANS 1286:2017 is accessible on <http://www.thedti.gov.za/industrial development/ip.jsp> at no cost.

- 1.6 A bid may be disqualified if this Declaration Certificate and the Annex C (Local Content Declaration: Summary Schedule – Form A3.6) are not submitted as part of the bid documentation.

2. The stipulated minimum threshold(s) for local production and content (refer to Annex A of SANS 1286:2017) for this bid is/are as follows:

<u>Steel Construction Materials</u>	<u>Components</u>	<u>Stipulated minimum threshold</u>
Steel value-added construction material products		
Joining/Connecting Components	Gussets, cleats, stiffeners, splices, cranks, kinks, doglegs, spacers, tabs and brackets	100%
Fasteners	Bolts, nuts, rivets and nails	100%
Wire Products	All fencing products, all barbed wire and mesh fencing, fabric/mesh reinforcing, gabions, wire rope/strand and chains, welding electrodes, nails/tacks, springs and screws	100%
Ducting and Structural Pipework	Non-conveyance tubing fabricated from steel sheeting and plate with structural supports	100%
Gutters, downpipes & launders	Fabricated materials made from sheeting associated with roof drainage systems	100%
Only locally produced or locally manufactured steel products and components for construction with a minimum threshold for local content and production as stipulated above will be considered.		
In the designation, imported inputs raw materials (i.e. zinc and additives in the surface preparation and protection process (cleaning and coating/galvanising)) used in the production of steel products and components for the construction are deemed as locally manufactured input materials.		
The imported input raw material, as specified above, used in the manufacture and production of steel products and components for construction will be deemed to have been sourced locally for the purposes of calculating local content.		
<u>Steel Construction Materials</u>		<u>Stipulated minimum threshold</u>
Primary steel construction material products		
Galvanised and Colour Coated coils		100%
Wire Rod and Drawn Wire		100%
Sections (Channels, Angles, I-Beams and H-Beams)		100%
Reinforcing bars		100%
Only locally produced or locally manufactured steel products and components for construction with a minimum threshold for local content and production as stipulated above will be considered.		
In the designation, imported inputs raw materials (i.e. zinc and additives in the surface preparation and protection process (cleaning and coating/galvanising)) used in the production of steel products and components for the construction are deemed as locally manufactured input materials.		

The imported input raw material, as specified above, used in the manufacture and production of steel products and components for construction will be deemed to have been sourced locally for the purposes of calculating local content.			
<u>Cable products</u>			<u>Stipulated minimum threshold</u>
Electrical cable material products			
Low Voltage			90%
Low Cost Reticulation			90%
Medium & High Voltage			90%
ACR			90%
Telecom cable material products			
Optical Fibre Cables			90%
Copper Telecom Cables			90%
Only locally produced or locally manufactured electrical and telecommunication cables for construction with a minimum threshold for local content and production as stipulated above will be considered.			
Excluded in the designation are mainly primary steel, copper, aluminium, polyvinyl chloride (PVC), cross-linked polyethylene (XLPE), aramid yarn, and optical fibre used for fabrication of cable products. This is to encourage local manufacturers to seek the best global competitive prices for primary materials hence the competitive imported materials used in the manufacture of cables will be deemed to have been sourced locally for the purposes of calculating local content.			
<u>Product type</u>			<u>Stipulated minimum threshold</u>
Plastic Pipes			
Polyvinyl chloride (PVC) pipes			100%
High density polyethylene (HDPE) pipes			100%
Polypropylene (PP) pipes			100%
Glass reinforced plastic (GRP) pipes			100%
Only locally produced or locally manufactured Plastic Pipes with a minimum threshold for local content and production as stipulated above will be considered.			
Textiles, Clothing, Leather and Footwear			
Textiles			100%
Only locally produced or locally manufactured Textiles, Clothing, Leather and Footwear from local raw material or input, with a minimum threshold for local production and content of 100% will be considered.			
Bagged and bulk cement			
Cement Type	Description	Application	Stipulated Minimum Threshold
Cem II	Portland cement containing varying additions of secondary materials, i.e. fly ash, pozzolana, slag, silica fume, or limestone	All civil and building construction as appropriate	100 %

Only locally produced or locally manufactured bagged and bulk cement produced using locally produced raw materials with the minimum threshold percentages for local production and content stated below will be considered:			

Copies of Annex D, Annex E, Process for application for exemption, as well as guidelines for the calculation of the local content, is provided in Appendix 8 of Part C4.

3. Does any portion of the services or goods offered have any imported content?

YES		NO		<i>Tick applicable box</i>
------------	--	-----------	--	-----------------------------------

3.1 If yes, the rate(s) of exchange to be used in this bid to calculate the local content as prescribed in paragraph 1.5 of the general conditions must be the rate(s) published by SARB for the specific currency on the date of advertisement of the bid 18 November 2022

The relevant rate of exchange information is accessible on <https://www.resbank.co.za>.

Indicate the rate(s) of exchange against the appropriate currency in the table below (refer to Annex A of SANS 1286:2017):

Currency	Rates of exchange
US Dollar	
Pound Sterling	
Euro	
Yen	
Other	

NB: Bidders must submit proof of the SARB rate(s) of exchange used.

4. Where, after the award of a bid, challenges are experienced in meeting the stipulated minimum threshold for local content the DTI must be informed accordingly in order for the DTI to verify and in consultation with the AO/AA provide directives in this regard.

LOCAL CONTENT DECLARATION
(REFER TO ANNEX B OF SATS 1286:2011)

LOCAL CONTENT DECLARATION BY CHIEF FINANCIAL OFFICER OR OTHER LEGALLY RESPONSIBLE PERSON NOMINATED IN WRITING BY THE CHIEF EXECUTIVE OR SENIOR MEMBER/PERSON WITH MANAGEMENT RESPONSIBILITY (CLOSE CORPORATION, PARTNERSHIP OR INDIVIDUAL)

IN RESPECT OF BID NO. R.033-130-2019/3

ISSUED BY: THE SOUTH AFRICAN NATIONAL ROADS AGENCY SOC LIMITED (the Procurement Authority / Institution):

N.B.:

1. The obligation to complete, duly sign and submit this declaration cannot be transferred to an external authorized representative, auditor or any other third party acting on behalf of the bidder.
2. Guidance on the Calculation of Local Content together with Local Content Declaration Templates (Annex C, D and E) is accessible on <http://www.thedtic.gov.za/sectors-and-services-2/industrial-development/industrial-procurement/?highlight=%27local%27%2C%27content%27%2C%27declaration%27>. Examples of Annex D and E as well as the Process for application for exemption and guidelines for the calculation of the local content is provided in Part C4: Appendix 8. Examples of Annex D and E is also provided in Excel format on the Tender document link. Bidders should first complete Declaration D. After completing Declaration D, bidders should complete Declaration E and then consolidate the information on Declaration C. **Declaration C should be submitted with the bid documentation at the closing date and time of the bid in order to substantiate the declaration made in paragraph (c) below.** Declarations D and E should be kept by the bidders for verification purposes for a period of at least 5 years. The successful bidder is required to continuously update Declarations C, D and E with the actual values for the duration of the contract.

I, the undersigned (full names),
do hereby declare, in my capacity as
of (name of bidder entity)
the following:

- (a) The facts contained herein are within my own personal knowledge.
- (b) I have satisfied myself that the goods/services/works to be delivered in terms of the above-specified bid comply with the minimum local content requirements as specified in the bid, and as measured in terms of SANS 1286:2017; and
- (c) The local content percentage (%) indicated below has been calculated using the formula given in clause 3 of SANS 1286:2017, the rates of exchange indicated in paragraph 3.1 above and the information contained in Declarations D and E which has been consolidated in Declaration C:

Bid price, excluding VAT (y)	R
Imported content (x), as calculated in terms of SATS 1286:2011	R
Stipulated minimum threshold for local content (paragraph 2 above)%
Local content %, as calculated in terms of SATS 1286:2011%

If the bid is for more than one product, the local content percentages for each product contained in Declaration C shall be used instead of the table above.

The local content percentage for each product has been calculated using the formula given in clause 3 of SANS 1286:2017, the rates of exchange indicated in paragraph 3.1 above and the information contained in Declarations D and E.

d) I accept that the Procurement Authority / Institution has the right to request that the local content be verified in terms of the requirements of SANS 1286:2017.

e) I understand that the awarding of the bid is dependent on the accuracy of the information furnished in this application. I also understand that the submission of incorrect data, or data that are not verifiable as described in SANS 1286:2017, may result in the Procurement Authority/Institution imposing any or all of the remedies as provided for in Regulation 14 of the Preferential Procurement Regulations, 2017 promulgated under the Preferential Procurement Policy Framework Act (PPPFA), 2000 (Act No. 5 of 2000).

SIGNATURE:.....
.....

DATE:

WITNESS No. 1:

WITNESS No. 2:

FORM A3.6:LOCAL CONTENT DECLARATION: SUMMARY SCHEDULE (ANNEXURE C)

CONTRACT SANRAL R.033-130-2019/3

FOR THE UPGRADING OF NATIONAL ROAD R33 SECTION 13 IN VAALWATER TOWN (KM 60.8 TO KM 63.0)

Notes to Tenderer

1. If the minimum threshold/s % local content is below the stipulated minimum threshold for local production and content, or if the Form is omitted, the tender will be declared non-responsive.

C1	Tender No.:									Note: VAT to be excluded from all calculations
C2	Tender Description:									
C3	Designated Product(s):									
C4	Tender Authority:									
C5	Tendering Entity Name:									
C6	Tender Exchange Rate:	Pula	P	EU	€	GBP	£	OTHER (stipulate)		

Tender Item No.'s	List of Items	Calculation of Local Content						Tender Summary			
		Tender Price Each (Excl. VAT)	Exempted Imported Value	Tender Value Net of Exempted Imported Content	Imported Value	Local Value	Local Content % (Per Item)	Tender Qty	Total Tender Value	Total Exempted Imported Content	Total Imported Content
(C8)	(C9)	(C10)	(C11)	(C12)	(C13)	(C14)	(C15)	(C16)	(C17)	(C18)	(C19)

Signature of tenderer from Annex B (SATS 1286.2011)

(C20) Total Tender Value

R

(C21) Total Exempt Imported Content

R

(C22) Total Tender value net of exempt imported content

R

Date: _____

(C23) Total Imported Content	R
(C24) Total Local Content	R
(C25) Average Local Content % of tender	...%

FORM A4: SCHEDULE OF DEVIATIONS OR QUALIFICATIONS BY TENDERER

CONTRACT SANRAL R.033-130-2019/3
FOR THE UPGRADING OF NATIONAL ROAD R33 SECTION 13 IN VAALWATER TOWN (KM 60.8
TO KM 63.0)

Notes to tenderer:

1. The Main Tender **MUST** be priced.
2. When submitting any alternative tender, condition of clause C.2.12 of Tender Data, shall be followed.

Page	Description

SIGNED BY TENDERER:

FORM A5: SCHEDULE OF ADDENDA TO TENDER DOCUMENTS

CONTRACT SANRAL R.033-130-2019/3
FOR THE UPGRADE OF NATIONAL ROAD R33 SECTION 13 IN VAALWATER TOWN (KM 60.8
TO KM 63.0)

Notes to tenderer:

1. If an addendum containing material amendments is not incorporated by the tenderer in his tender offer, the tender will be declared non-responsive.

We confirm that the following communications received from the Employer before the submission of this tender offer, amending the tender documents, have been taken into account in this tender offer:		
	Date	Title or Details
1.		
2.		
3.		
4.		
5.		
6.		
7.		
8.		
9.		
10.		

SIGNED BY TENDERER:

FORM A6: CERTIFICATE OF TAX COMPLIANCE (INCORPORATING SBD2)

CONTRACT SANRAL R.033-130-2019/3
FOR THE UPGRADING OF NATIONAL ROAD R33 SECTION 13 IN VAALWATER TOWN (KM 60.8
TO KM 63.0)

The tenderer shall complete the declaration below.

I, (name)
the undersigned in my capacity as (position)
on behalf of (name of company)
herewith grant consent that SARS may disclose to the South African National Roads Agency SOC
Limited (SANRAL) our tax compliance status. For this purpose, our unique security personal
identification number (PIN) is our tax reference number is
and our tax clearance certificate number is

In the event of a Joint Venture / Consortium, each member shall comply with the above requirement.

SIGNED BY TENDERER:

FORM A7: CERTIFICATE OF INSURANCE COVER

CONTRACT SANRAL R.033-130-2019/3
FOR THE UPGRADING OF NATIONAL ROAD R33 SECTION 13 IN VAALWATER TOWN (KM 60.8
TO KM 63.0)

Note to tenderer:

In the event of the tenderer being a Joint Venture/consortium the details of the individual members must also be provided.

The tenderer shall provide the following details of this insurance cover:

- i) Name of Tenderer:
- ii) Period of Validity:
- iii) Value of Insurance:
- Insurance for Works and Contractor's Equipment
Company:
Value:
 - Insurance for Contractor's Personnel
Company:
Value:
 - General public liability
Company:
Value:
 - SASRIA
Company:
Value:

SIGNED BY TENDERER:

FORM A8: TENDERER'S REGISTERED FINANCIAL SERVICE PROVIDER LETTER AND BANK DETAILS

CONTRACT SANRAL R.033-130-2019/3
FOR THE UPGRADING OF NATIONAL ROAD R33 SECTION 13 IN VAALWATER TOWN (KM 60.8 TO KM 63.0)

Notes to tenderer:

1. The tenderer shall attach to this form a letter (dated less than 3 months prior to the tender closing date) from a Registered Financial Service Provider (registered with the FSB) confirming his account and confirms the Tenderer's available capital and that the Tenderer has the financial means net of current commitments (independent of any contractual advance payment) available to meet the construction cash flow requirements estimated for the subject contract or a written confirmation from any registered financial institution or the tenderer's independent registered accountant should be requested to submit confirmation of the available working capital to meet the construction workflow requirements estimated for the subject contract. The confirmation by an independent registered accountant must indicate that the review, to be conducted in terms of ISRS4400, was done in terms of the Section 30 and Regulation 29 of the Companies Act No. 71 of 2008.
2. If the Tenderer does not have financial resources, the tender will be declared non-responsive in terms of clause C.3.13 (b) of the Tender Data.
3. The Tenderer (and in the event of a joint venture, the joint venture member's combined) shall have available capital in excess of R 60 000 000.00
4. In the event that the tenderer is a joint venture enterprise, details of all the members of the joint venture shall be similarly provided and attached to this form.
5. The successful tenderer may be requested to demonstrate its financial capability to execute the contract prior to award at SANRAL's discretion in terms of clause C.3.13.
6. In the event that the Employer at its sole discretion is not satisfied with the financial capability of the tenderer as a result of whatsoever nature and reason, the Employer reserves the right to invoke the provisions under tender data C.3.13. In addition, the Employer reserves the right to perform a full risk assessment as per tender data C.3.13. Furthermore, if the aforementioned occur, any and all report/s will be used to evaluate the Tenderer's ability to perform the contract as stated in sub-clause C.3.13.(b) of the CIDB Standard Conditions of Tender.
7. The letter shall contain the information as indicated below.

DATE

Bank Name

FSB Number

Bank Address

(Letter to be on the Financial Service Provider's letter head)

RE: ACCOUNT CONDUCT AND CASHFLOW CONFIRMATION

To Whom It May Concern:

We hereby confirm that **Tenderer Name** has been banking with **xxxx** bank for a period of **xxx years** and the account has been conducted in a satisfactory manner. **Tenderer Name** has the financial means, net of current commitments available to meet the construction cash flow requirements to the value of **xxxxx** for contract **(insert contract number)**.

- i) Name of Account Holder:
- ii) Account Number:
- iii) Bank name:
- iv) Branch Number:

v) Bank and branch contact details.....

Yours Sincerely,

Name _____

Signature



FORM A9.1: SCHEDULE OF TENDERER'S LITIGATION HISTORY

CONTRACT SANRAL R.033-130-2019/3

FOR THE UPGRADE OF NATIONAL ROAD R33 SECTION 13 IN VAALWATER TOWN (KM 60.8 TO KM 63.0)

Note to tenderer:

The tenderer (and in the case of a Joint Venture, each member of the Joint Venture) shall list below details of any litigation with which the tenderer (including its directors, shareholders or other senior members in previous companies) has been involved with any organ of state or state department within the last ten years. The details must include the year, the litigating parties, the subject matter of the dispute, the value of any award or estimated award if the litigation is current and in whose favour the award, if any, was made.

Employer	Other litigating party	Dispute	Award value	Date resolved

SIGNED BY TENDERER:

FORM A9.2: ENVIRONMENTAL, SOCIAL, HEALTH, AND SAFETY PERFORMANCE DECLARATION

CONTRACT SANRAL R.033-130-2019/3
FOR THE UPGRADING OF NATIONAL ROAD R33 SECTION 13 IN VAALWATER TOWN (KM 60.8 TO KM 63.0)

Note to tenderer:

The tenderer (and in the case of a Joint Venture, each member of the Joint Venture) shall indicate below by marking with an “X” if suspension or termination of a contract occurred or not, and/or if the performance security has been called or not, related to Environmental, Social, Health or Safety (ESHS) performance, in the past five (5) years prior to the tender submission date.

In the event that suspension or termination occurred and/or the performance security has been called, the tenderer shall complete the details of all the suspensions and terminations as well as the details of all performance securities called since the date indicated.

The Employer may use this information to seek further information or clarifications in carrying out its due diligence.

Environmental, Social, Health, and Safety Performance Declaration			
<input type="checkbox"/> No suspension or termination of contract: An employer has not suspended or terminated a contract and/or called the performance security for a contract for reasons related to Environmental, Social, Health, or Safety (ESHS) performance in the past five (5) years prior to the tender submission date.			
<input type="checkbox"/> Declaration of suspension or termination of contract: The following contract(s) has/have been suspended or terminated and/or Performance Security called by an employer(s) for reasons related to Environmental, Social, Health, or Safety (ESHS) performance in the past five (5) years prior to the tender submission date. Details are described below:			
Year	Suspended or terminated portion of contract	Contract Identification	Total Contract Amount
<i>[insert year]</i>	<i>[insert amount and percentage]</i>	<i>[insert complete contract name, contract number, Name of Employer, Address of Employer, Reason(s) for suspension or termination]</i>	<i>[insert amount]</i>
Performance Security called by an employer(s) for reasons related to ESHS performance			
Year	Contract Identification		Total Contract Amount
<i>[insert year]</i>	<i>[insert complete contract name, contract number, Name of Employer, Address of Employer, Reason(s) for calling of performance security]</i>		<i>[insert amount]</i>

SIGNED BY TENDERER:

FORM A10: SCHEDULE OF CURRENT COMMITMENTS

CONTRACT SANRAL R.033-130-2019/3
FOR THE UPGRADE OF NATIONAL ROAD R33 SECTION 13 IN VAALWATER TOWN (KM 60.8
TO KM 63.0)

Notes to tenderer:

1. The tenderer shall list below all contracts currently under construction or awarded and about to commence and tenders for which offers have been submitted but awards not yet made.
2. In the event of a joint venture or consortium, details of all the members of the joint venture or consortium shall similarly be attached to this form.
3. The lists must be restricted to not more than 20 contracts and 20 tenders. If a tenderer's actual commitments or potential commitments are greater than 20 each, those listed should be in descending order of expected final contract value or sum tendered.

Table 1: CONTRACTS AWARDED				
Employer	Project	Expected total value of contract (incl. VAT)	Duration (Months)	Expected completion date

Table 2: TENDERS NOT YET AWARDED				
Employer	Project	Sum Tendered (incl. VAT)	Tendered Duration (Months)	Expected commencement

SIGNED BY TENDERER:

FORM A11: CERTIFICATE OF COMPLIANCE WITH COMPENSATION FOR OCCUPATIONAL INJURIES AND DISEASES ACT, 1993 (ACT NO. 130 OF 1993)

CONTRACT SANRAL R.033-130-2019/3
FOR THE UPGRADE OF NATIONAL ROAD R33 SECTION 13 IN VAALWATER TOWN (KM 60.8 TO KM 63.0)

Notes to tenderer:

1. Discovery that the tenderer has failed to make proper disclosure may result in SANRAL terminating a contract that flows from this tender on the ground that it has been rendered invalid by the tenderer's misrepresentation.
2. The tenderer shall attach to this Form evidence that he is registered and in good standing with the compensation fund or with a licensed compensation insurer who is approved by Department of Labour in terms of section 80 of the Compensation for Injury and Disease Act, 1993 (Act No. 130 of 1993).
3. The tenderer is required to disclose, by also attaching documentary evidence to this form, all inspections, investigations and their outcomes conducted by the Department of Labour into the conduct of the tenderer at any time during the 36 months preceding the date of this tender.
4. In the event of a joint venture or consortium, each and every member of the unincorporated Joint Venture shall comply with the above requirements.

SIGNED BY TENDERER:

FORM A12: CERTIFICATE OF REGISTRATION WITH CIDB

CONTRACT SANRAL R.033-130-2019/3
FOR THE UPGRADING OF NATIONAL ROAD R33 SECTION 13 IN VAALWATER TOWN (KM 60.8
TO KM 63.0)

Notes to tenderer:

1. The tenderer shall provide a scanned copy in .pdf of the Active Contractor's Listing off the CIDB website. (www.cidb.org.za). Tenderers whose CIDB registration expires within 21 days after close of tender should attach proof of their application for re-registration (refer to Tender Data Clause C.2.1.1).
2. In the case of a Joint Venture, a scanned copy in .pdf of the Active Contractor's Listing must be provided for each member of the Joint Venture.
3. The tender will be declared non-responsive if:
 - The Tenderer is not registered on CIDB within the required contractor grading and category at the tender closing date, or
 - the Tenderer is suspended, or
 - the Tenderer has not declared interest of application to upgrade the grading, or
 - the Tenderer failed to submit the new registered grading within 21 days after tender closure.

Name of Contractor:

Contractor Grading Designation:.....

CIDB Contractor Registration Number:

Expiry Date:

SIGNED BY TENDERER:

FORM A13: FORM SBD1 – INVITATION TO BID AND TERMS AND CONDITIONS FOR BIDDING

PART A: INVITATION TO BID

YOU ARE HEREBY INVITED TO BID FOR REQUIREMENTS OF THE SOUTH AFRICAN NATIONAL ROADS AGENCY SOC LIMITED					
BID NUMBER:	R.033-130-2019/3		CLOSING DATE:	15 December 2022	CLOSING TIME: 11h00
DESCRIPTION	THE UPGRADING OF NATIONAL ROAD R33 SECTION 13 IN VAALWATER TOWN (KM 60.8 TO KM 63.0)				
BID RESPONSE DOCUMENTS MAY BE DEPOSITED IN THE BID BOX SITUATED AT:					
SANRAL Northern Region, 38 Ida Street. Menlo Park, Pretoria.					
BIDDING PROCEDURE ENQUIRIES MAY BE DIRECTED TO:					
E-MAIL ADDRESS	procurementnr3@sanral.co.za				
SUPPLIER INFORMATION					
NAME OF BIDDER					
POSTAL ADDRESS					
STREET ADDRESS					
TELEPHONE NUMBER	CODE		NUMBER		
CELLPHONE NUMBER					
FACSIMILE NUMBER	CODE		NUMBER		
E-MAIL ADDRESS					
VAT REGISTRATION NUMBER					
SUPPLIER COMPLIANCE STATUS	TAX COMPLIANCE SYSTEM PIN:		OR	CENTRAL SUPPLIER DATABASE No:	MAAA
B-BBEE STATUS LEVEL VERIFICATION CERTIFICATE	TICK APPLICABLE BOX <input type="checkbox"/> Yes <input type="checkbox"/> No		B-BBEE STATUS LEVEL SWORN AFFIDAVIT		TICK APPLICABLE BOX <input type="checkbox"/> Yes <input type="checkbox"/> No
A B-BBEE STATUS LEVEL VERIFICATION CERTIFICATE MUST BE SUBMITTED IN ORDER TO QUALIFY FOR PREFERENCE POINTS FOR B-BBEE					
ARE YOU THE ACCREDITED REPRESENTATIVE IN SOUTH AFRICA FOR THE GOODS/SERVICES/WORKS OFFERED?	<input type="checkbox"/> Yes <input type="checkbox"/> No [IF YES ENCLOSE PROOF]		ARE YOU A FOREIGN BASED SUPPLIER FOR THE GOODS/SERVICES /WORKS OFFERED?		<input type="checkbox"/> Yes <input type="checkbox"/> No [IF YES ANSWER THE QUESTIONNAIRE BELOW]
QUESTIONNAIRE TO BIDDING FOREIGN SUPPLIERS					
IS THE ENTITY A RESIDENT OF THE REPUBLIC OF SOUTH AFRICA (RSA)?				<input type="checkbox"/> YES NO	<input type="checkbox"/>
DOES THE ENTITY HAVE A BRANCH IN THE RSA?				<input type="checkbox"/> YES NO	<input type="checkbox"/>
DOES THE ENTITY HAVE A PERMANENT ESTABLISHMENT IN THE RSA?				<input type="checkbox"/> YES NO	<input type="checkbox"/>
DOES THE ENTITY HAVE ANY SOURCE OF INCOME IN THE RSA?				<input type="checkbox"/> YES NO	<input type="checkbox"/>
IS THE ENTITY LIABLE IN THE RSA FOR ANY FORM OF TAXATION				<input type="checkbox"/> YES NO	<input type="checkbox"/>
IF THE ANSWER IS "NO" TO ALL OF THE ABOVE, THEN IT IS NOT A REQUIREMENT TO REGISTER FOR A TAX COMPLIANCE STATUS SYSTEM PIN CODE FROM THE SOUTH AFRICAN REVENUE SERVICE (SARS) AND IF NOT, REGISTER AS PER 2.3 BELOW					

PART B: TERMS AND CONDITIONS FOR BIDDING

1. BID SUBMISSION:

- 1.1. BIDS MUST BE ELECTRONICALLY DELIVERED BY THE STIPULATED TIME. LATE BIDS WILL NOT BE ACCEPTED FOR CONSIDERATION.
- 1.2. **ALL BIDS MUST BE SUBMITTED ON THE OFFICIAL FORMS PROVIDED (NOT TO BE RE-TYPED) OR IN THE MANNER PRESCRIBED IN THE BID DOCUMENT.**
- 1.3. THIS BID IS SUBJECT TO THE PREFERENTIAL PROCUREMENT POLICY FRAMEWORK ACT, 2000, AND THE PREFERENTIAL PROCUREMENT REGULATIONS, 2017, THE GENERAL CONDITIONS OF CONTRACT (GCC) AND, IF APPLICABLE, ANY OTHER SPECIAL CONDITIONS OF CONTRACT.
- 1.4. **THE SUCCESSFUL BIDDER WILL BE REQUIRED TO FILL IN AND SIGN A WRITTEN CONTRACT FORM (SBD7).**

2. TAX COMPLIANCE REQUIREMENTS

- 2.1 BIDDERS MUST ENSURE COMPLIANCE WITH THEIR TAX OBLIGATIONS.
- 2.2 BIDDERS ARE REQUIRED TO SUBMIT THEIR UNIQUE PERSONAL IDENTIFICATION NUMBER (PIN) ISSUED BY SARS TO ENABLE THE ORGAN OF STATE TO VERIFY THE TAXPAYER'S PROFILE AND TAX STATUS.
- 2.3 APPLICATION FOR TAX COMPLIANCE STATUS (TCS) PIN MAY BE MADE VIA E-FILING THROUGH THE SARS WEBSITE WWW.SARS.GOV.ZA.
- 2.4 BIDDERS MAY ALSO SUBMIT A SCANNED COPY IN .PDF OF THE PRINTED TCS CERTIFICATE TOGETHER WITH THE BID.
- 2.5 IN BIDS WHERE CONSORTIA / JOINT VENTURES / SUB-CONTRACTORS ARE INVOLVED EACH PARTY MUST SUBMIT A SEPARATE TCS CERTIFICATE / PIN / CSD NUMBER.
- 2.6 WHERE NO TCS IS AVAILABLE BUT THE BIDDER IS REGISTERED ON THE CENTRAL SUPPLIER DATABASE (CSD), A CSD NUMBER MUST BE PROVIDED.
- 2.7 NO BIDS WILL BE CONSIDERED FROM PERSONS IN THE SERVICE OF THE STATE, COMPANIES WITH DIRECTORS WHO ARE PERSONS IN THE SERVICE OF THE STATE, OR CLOSE CORPORATIONS WITH MEMBERS WHO ARE PERSONS IN THE SERVICE OF THE STATE*.

NB: FAILURE TO PROVIDE OR COMPLY WITH ANY OF THE ABOVE PARTICULARS MAY RENDER THE BID INVALID.

SIGNATURE OF BIDDER:

.....

CAPACITY UNDER WHICH THIS BID IS SIGNED:
(Proof of authority must be submitted e.g. company resolution)

.....

DATE:

.....

FORM B1: CONTRACTOR'S ESTABLISHMENT ON SITE

CONTRACT SANRAL R.033-130-2019/3
FOR THE UPGRADING OF NATIONAL ROAD R33 SECTION 13 IN VAALWATER TOWN (KM 60.8
TO KM 63.0

Note to Tenderer:

If the tenderer should require additional compensation for his obligations under Part C3 section 1.3 (over and above the total tendered for item C1.3.1) by including such additional compensation in the tendered rates and/or lump sum of items in the pricing schedule, these items and the value of such additional compensation shall also be set out in a letter attached to this form.

Should the combined, extended total tendered for Item C1.3.1 The contractor's general obligations:

C1.3.1.1 Fixed obligations

C1.3.1.2 Value-related obligations

C1.3.1.3 Time-related obligations

exceed a maximum of 20% of the tender sum, the tenderer shall clearly set out his reasons for tendering in this manner in a letter attached to this page.

The relevant regional project engineer will duly consider these reasons but reserves the right to consider the tendered rates to be imbalanced and to deal with them in terms of Tender Data clause C.3.9 contained in this volume.

Total tendered for Item C1.3.1 expressed as a percentage of the tender sum (excluding VAT)%

SIGNED BY TENDERER:

FORM B2: SCHEDULE OF SPECIAL MATERIALS

CONTRACT SANRAL R.033-130-2019/3

FOR THE UPGRADE OF NATIONAL ROAD R33 SECTION 13 IN VAALWATER TOWN (KM 60.8 TO KM 63.0)

Notes to tenderer:

1. Refer to part C1.2.1 Conditions of Contract where subclause 13.8 of the FIDIC General Conditions of Contract has been amended.
2. Only net bitumen content of asphalt and bituminous products shall be subject to rise and fall and no account shall be taken of transport, emulsifiers, diluents or modifiers that may be supplied ex refinery or added later.
3. For the purpose of clarity when using this form, a supplier is any company (including refineries) that supplies to a tenderer a bituminous product that it manufactures using bitumen as the sole or blended ingredient in the product. A tenderer shall, in compliance with note 4 below, attach to this form a letter of supply from each supplier it intends using in the performance of the contract.
4. Tenderers shall append to this page the following information on a letterhead from their selected supplier:
 - the supplier's company registration and address details; and
 - the product range available including refinery from which the base bitumen is drawn; and
 - the net base bitumen type and content for each product; and
 - the supply price (excluding VAT and any discounts but including all other obligatory taxes and levies) to the tenderer for the net bitumen base content of each product; and
 - the date from which the supply prices apply.
5. Rise and fall adjustments shall only be made upon receipt by the engineer of the appropriate letters of supply in compliance to note 4 above, but with the changed supply prices and date of application, as well as reasons for the changes.
6. A change of supplier may be permitted, but only upon application to the engineer with the appropriate letters of supply in compliance to Note 4 above and approval thereof.
7. Non-disclosure of reduction in supply prices shall be deemed a contractor's deliberate action to defraud the Employer and grounds for the Employer, at its sole discretion, to terminate the contract.

Each material dealt with as a special material in terms of FIDIC clause 13.8 as amended is stated in the list below. The rates and prices for the special materials shall be furnished by the tenderer as an attachment to this Form B2, which rates and prices shall not include VAT but shall include all other obligatory taxes and levies.

SPECIAL MATERIAL	UNIT*	RATE OR PRICE FOR THE BASE MONTH
Bitumen 35/50 penetration Bitumen 50/70 penetration Bitumen 70/100 penetration Bitumen 150/200 penetration	Ton Ton Ton Ton	As stated on supplier's letter attached to this form.

*Indicate whether the material will be delivered in bulk or in containers.

SIGNED BY TENDERER:

FORM C1.1: TENDERER'S B-BBEE VERIFICATION CERTIFICATE

Notes to tenderer:

1. The tenderer shall attach to this form a valid B-BBEE verification certificate issued in accordance with:
 - the amended Construction Sector Codes published in Notice 931 of 2017 of Government Gazette No. 41287 on 1 December 2017 by the Department of Trade and Industry.
 - in the event that the Measured Entity operates in more than one sector or sub-sector, the scorecard for the sector or sub-sector in which the majority of its core activities (measured in terms of Annual Revenue) are located will be acceptable. The tenderer must comply with the annual revenue thresholds for EME or QSE or Generic in accordance with the amended Construction Sector Codes.
2. The certificate shall:
 - have been issued by a verification agency accredited by the South African National Accreditation System (SANAS); or
 - be in the form of a sworn affidavit or a certificate issued by the Companies and Intellectual Property Commission in the case of an Exempted Micro Enterprise (EME) with a total annual revenue of less than R3 million if issued in accordance with the amended Construction Sector Codes published in Notice 931 of 2017 of Government Gazette No. 41287 on 1 December 2017 by the Department of Trade and Industry; and
 - be valid at the original advertised tender closing date; and
 - have a date of issue less than 12 (twelve) months prior to the tender closing date (see Tender Data C.2.15).
3. If the B-BBEE Certificate is not valid,
4. A valid BBBEE Certificates shall contain:
 - Name of enterprise as per enterprise registration documents issued by CIPC, and enterprise business address.
 - Value-Added Tax number, where applicable.
 - The B-BBEE Scorecard against which the certificate is issued, indicating all elements and scores achieved for each element. The actual score achieved must be linked to the total points as per the relevant Codes.
 - B-BBEE status with corresponding procurement recognition level.
 - The relevant Codes used to issue the B-BBEE verification certificate.
 - Date of issue and expiry (e.g. 9 June 2018 to 8 June 2019). Where a measured entity was subjected to a re-verification process, due to material change, the B-BBEE Verification Certificate must reflect the initial date of issue, date of re-issue and the initial date of expiry. Re-verification does not extend the lifespan of the B-BBEE Verification Certificate.
 - Financial period which was used to issue the B-BBEE Verification Certificate
5. A valid Sworn Affidavit shall contain:
 - Name/s of deponent as they appear in the identity document and the identity number.
 - Designation of the deponent as either the director, owner or member must be indicated in order to know that person is duly authorised to depose of an affidavit.
 - Name of enterprise as per enterprise registration documents issued by the CIPC, where applicable, and enterprise business address.
 - Percentage black ownership, black female ownership and whether they fall within a designated group.
 - Indicate total revenue for the year under review and whether it is based on audited financial statements or management accounts.
 - Financial year-end as per the enterprise's registration documents, which was used to determine the total revenue. **The valid format of the Financial Year-End is Day/Month/Year**
 - B-BBEE status level. An enterprise can only have one status level.
 - Date deponent signed and date of Commissioner of Oath must be the same.
 - Commissioner of Oath cannot be an employee or ex officio of the enterprise because, a person cannot by law, commission a sworn affidavit in which they have an interest, and
6. In the event of a Joint Venture (JV), a project specific (SANRAL project number indicated) consolidated B-BBEE verification certificate in the name of the JV, shall be attached.
7. The attached verification certificate and the associated assessment report shall comply with the requirements of Tender Data clause C.3.11.8 and shall identify:
 - (a) The name and domicilium citandi et executandi of the tenderer.
 - (b) The registration and VAT number of the tenderer.
 - (c) The dates of granting of the B-BBEE score and the period of validity.

- (d) The expiry date of the verification certificate.
 - (e) A unique identification number.
 - (f) The standard and/or normative document, including the issue and/or revision used to evaluate the tenderer.
 - (g) The name and/or mark/logo of the B-BBEE verification agency.
 - (h) The category (Generic, QSE, EME) in which the tenderer has been measured.
 - (i) The B-BBEE status level.
 - (j) The South African National Accreditation System (SANAS) logo on the verification certificate once verification agencies have been accredited.
 - (k) The B-BBEE procurement recognition level.
 - (l) The score achieved per B-BBEE element.
 - (m) The % black shareholding.
 - (n) The % black women shareholding.
 - (o) The % black persons with disabilities shareholding
 - (p) The % black youth shareholding
 - (q) The % black people living in rural or underdeveloped areas or townships shareholding
 - (r) The % black military veterans shareholding
 - (s) The value-added status of the tenderer.
8. The Employer will not be responsible to acquire data that it needs for its own reporting systems and which may not form part of a verification agency's standard certificate format. The tenderer, at its own cost, must acquire any missing specified data listed in 4 above from its selected verification agency and have it recorded on the certificate. Alternatively, such missing data must be supplied separately, but certified as correct by the same verification agency and also attached to this form.
-

FORM C1.2: PREFERENCE POINTS CLAIM FORM IN TERMS OF THE PREFERENTIAL PROCUREMENT REGULATIONS 2017 (INCORPORATING SBD6.1)

CONTRACT SANRAL R.033-130-2019/3

FOR THE UPGRADING OF NATIONAL ROAD R33 SECTION 13 IN VAALWATER TOWN (KM 60.8 TO KM 63.0)

Notes to tenderer:

1. This preference form must form part of all bids invited. It contains general information and serves as a claim form for preference points for Broad-Based Black Economic Empowerment (B-BBEE) Status Level of Contribution
2. **NB:BEFORE COMPLETING THIS FORM, THE TENDERER MUST STUDY THE GENERAL CONDITIONS, DEFINITIONS AND DIRECTIVES APPLICABLE IN RESPECT OF B-BBEE, AS PRESCRIBED IN THE PREFERENTIAL PROCUREMENT REGULATIONS, 2017.**

1. GENERAL CONDITIONS

- 1.1 The following preference point systems are applicable to all bids:
 - the 80/20 system for requirements with a Rand value of up to R50 000 000 (all applicable taxes included); and
 - the 90/10 system for requirements with a Rand value above R50 000 000 (all applicable taxes included).
- 1.2 (a) The value of this bid is estimated to exceed R50 000 000 (all applicable taxes included) and therefore the 90/10 preference point system shall be applicable;
- 1.3 Points for this bid shall be awarded for:
 - (a) Price; and
 - (b) B-BBEE Status Level of Contributor.
- 1.4 The maximum points for this bid are allocated as follows:

	POINTS
PRICE	90
B-BBEE STATUS LEVEL OF CONTRIBUTOR	10
Total points for Price and B-BBEE must not exceed	100

- 1.5 Failure on the part of a bidder to submit proof of B-BBEE Status level of contributor together with the bid, will be interpreted to mean that preference points for B-BBEE status level of contribution are not claimed.
- 1.6 The purchaser reserves the right to require of a bidder, either before a bid is adjudicated or at any time subsequently, to substantiate any claim in regard to preferences, in any manner required by the purchaser.

2. DEFINITIONS

- (a) **“B-BBEE”** means broad-based black economic empowerment as defined in section 1 of the Broad-Based Black Economic Empowerment Act.
- (b) **“B-BBEE status level of contributor”** means the B-BBEE status of an entity in terms of a code of good practice on black economic empowerment, issued in terms of section 9(1) of the Broad-Based Black Economic Empowerment Act.
- (c) **“bid”** means a written offer in a prescribed or stipulated form in response to an invitation by an organ of state for the provision of goods or services, through price quotations, advertised competitive bidding processes or proposals.
- (d) **“Broad-Based Black Economic Empowerment Act”** means the Broad-Based Black Economic Empowerment Act, 2003 (Act No. 53 of 2003).

T-71

- (e) **“EME”** means an Exempted Micro Enterprise in terms of a code of good practice on black economic empowerment issued in terms of section 9 (1) of the Broad-Based Black Economic Empowerment Act.
- (f) **“functionality”** means the ability of a tenderer to provide goods or services in accordance with specifications as set out in the tender documents.
- (g) **“prices”** includes all applicable taxes less all unconditional discounts.
- (h) **“proof of B-BBEE status level of contributor”** means:
 - 1) B-BBEE Status level certificate issued by an authorized body or person;
 - 2) A sworn affidavit as prescribed by the B-BBEE Codes of Good Practice;
 - 3) Any other requirement prescribed in terms of the B-BBEE Act.
- (i) **“QSE”** means a qualifying small business enterprise in terms of a code of good practice on black economic empowerment issued in terms of section 9 (1) of the Broad-Based Black Economic Empowerment Act.
- (j) **“rand value”** means the total estimated value of a contract in Rand, calculated at the time of bid invitation, and includes all applicable taxes.

3. POINTS AWARDED FOR PRICE

3.1 THE 80/20 OR 90/10 PREFERENCE POINT SYSTEMS

A maximum of 80 or 90 points is allocated for price on the following basis:

80/20 or 90/10

$$P_s = 80 \left(1 - \frac{P_t - P_{\min}}{P_{\min}} \right) \quad \text{or} \quad P_s = 90 \left(1 - \frac{P_t - P_{\min}}{P_{\min}} \right)$$

Where:

Ps = Points scored for price of bid under consideration
 Pt = Price of bid under consideration
 Pmin = Price of lowest acceptable bid

4. POINTS AWARDED FOR B-BBEE STATUS LEVEL OF CONTRIBUTOR

- 4.1 In terms of Regulation 6 (2) and 7 (2) of the Preferential Procurement Regulations, preference points must be awarded to a bidder for attaining the B-BBEE status level of contribution in accordance with the table below:

B-BBEE Status Level of Contributor	Number of points (90/10 system)	Number of points (80/20 system)
1	10	20
2	9	18
3	6	14
4	5	12
5	4	8
6	3	6
7	2	4
8	1	2
Non-compliant contributor	0	0

5. BID DECLARATION

- 5.1 Bidders who claim points in respect of B-BBEE Status Level of Contribution must complete the following:

6. B-BBEE STATUS LEVEL OF CONTRIBUTOR CLAIMED IN TERMS OF PARAGRAPHS 1.4 AND 4.1

- 6.1 B-BBEE Status Level of Contributor: = (maximum of 10 or 20 points)
(Points claimed in respect of paragraph 6.1 must be in accordance with the table reflected in paragraph 4.1 and must be substantiated by relevant proof of B-BBEE status level of contributor.)

7. SUB-CONTRACTING

- 7.1 Will any portion of the contract be sub-contracted? (*Tick applicable box*)

YES		NO	
-----	--	----	--

- 7.1.1 If yes, indicate:

- i) What percentage of the contract will be sub-contracted: ...%
- ii) The name of the sub-contractor
- iii) The B-BBEE status level of the sub-contractor:
- iv) Whether the sub-contractor is an EME or QSE (*Tick applicable box*)

YES		NO	
-----	--	----	--

- v) Specify, by ticking the appropriate box, if subcontracting with an enterprise in terms of Preferential Procurement Regulations, 2017:

Designated Group: An EME or QSE which is at least 51% owned by:	EME ✓	QSE ✓
Black people		
Black people who are youth		
Black people who are women		
Black people with disabilities		
Black people living in rural or underdeveloped areas or townships		
Cooperative owned by black people		
Black people who are military veterans		
OR		
Any EME		
Any QSE		

8. DECLARATION WITH REGARD TO COMPANY/FIRM

- 8.1 Name of company/firm:
- 8.2 VAT registration number:
- 8.3 Company registration number:
- 8.4 TYPE OF COMPANY/ FIRM (*Tick applicable box*)
- ☐ Partnership/Joint Venture / Consortium

- ☐ One person business/sole propriety
- ☐ Close corporation
- ☐ Company
- ☐ (Pty) Limited

8.5 DESCRIBE PRINCIPAL BUSINESS ACTIVITIES

.....

.....

.....

.....

8.6 COMPANY CLASSIFICATION (*Tick applicable box*)

- ☐ Manufacturer
- ☐ Supplier
- ☐ Professional service provider
- ☐ Other service providers, e.g. transporter, etc.

8.7 Total number of years the company/firm has been in business:

8.8 I/we, the undersigned, who is / are duly authorised to do so on behalf of the company/firm, certify that the points claimed, based on the B-BBEE status level of contributor indicated in paragraphs 1.4 and 6.1 of the foregoing certificate qualifies the company/ firm for the preference(s) shown and I / we acknowledge that:

- i) The information furnished is true and correct;
- ii) The preference points claimed are in accordance with the General Conditions as indicated in paragraph 1 of this form;
- iii) In the event of a contract being awarded as a result of points claimed as shown in paragraphs 1.4 and 6.1, the contractor may be required to furnish documentary proof to the satisfaction of the purchaser that the claims are correct;
- iv) If the B-BBEE status level of contributor has been claimed or obtained on a fraudulent basis or any of the conditions of contract have not been fulfilled, the purchaser may, in addition to any other remedy it may have:
 - (a) disqualify the person from the bidding process;
 - (b) recover costs, losses or damages it has incurred or suffered as a result of that person's conduct;
 - (c) cancel the contract and claim any damages which it has suffered as a result of having to make less favourable arrangements due to such cancellation;
 - (d) recommend that the bidder or contractor, its shareholders and directors, or only the shareholders and directors who acted on a fraudulent basis, be restricted by the National Treasury from obtaining business from any organ of state for a period not exceeding 10 years, after the *audi alteram partem* (hear the other side) rule has been applied; and
 - (e) forward the matter for criminal prosecution.

WITNESSES:

1.
2.

.....

SIGNATURE(S) OF BIDDERS(S)

DATE:

FORM D1: SCHEDULE OF TENDERER'S PLANT AND EQUIPMENT

CONTRACT SANRAL R.033-130-2019/3
FOR THE UPGRADING OF NATIONAL ROAD R33 SECTION 13 IN VAALWATER TOWN (KM 60.8 TO KM 63.0)

Note to tenderer:

The tenderer shall provide details of the major plant and equipment required for this project.

The tenderer shall state below the number of each construction plant to be used on this project and what constructional plant will be immediately available for this contract, what constructional plant will become available by virtue of outstanding orders, and what further constructional plant will be acquired or hired for the work should the tenderer be awarded the contract.

- a) Constructional plant immediately available (I)
- b) Constructional plant on order (O)
(State details of arrangements made, with delivery dates)
- c) Constructional plant that will be acquired or hired (H)
(State details of delivery arrangements)

PLANT AND EQUIPMENT TYPE	NUMBER TO BE USED ON THIS PROJECT	DATE OF MANUFACTURE	AVAILABILITY (State either I, O or H)
Motor grader	1		
Minimum 12000 litre Water truck	2		
19 ton pad-foot roller	1		
16 ton smooth drum roller	1		
12m ³ tipper trucks	5		
Tractor loader backhoe (TLB)	1		
Asphalt paving machine	1		
25 ton pneumatic roller	2		
9 ton tandem roller	1		
9 ton 3 point roller	1		
Pedestrian roller	1		
Mechanical broom	1		
Truck (minimum 3 tons) with mounted attenuator	1		
Chip Spreader	1		

SIGNED BY TENDERER:

FORM D2: TENDERER'S METHOD STATEMENT

CONTRACT SANRAL R.033-130-2019/3
FOR THE UPGRADING OF NATIONAL ROAD R33 SECTION 13 IN VAALWATER TOWN (KM 60.8
TO KM 63.0)

Note to tenderer:

The tenderer shall provide a method statement with the details as indicated on this form.

The method statement must respond to the Scope of Work and Project Information under Part C4 and outline the proposed approach/methodology. The method statement should articulate what value the Tenderer will add by in achieving the stated objectives for the project.

The Tenderer must as such explain the following:

- Its understanding of the objectives of the assignment and the Employer's stated and implied requirements,
- Highlight the issues of importance and explain the technical approach they would adopt to address them, and
- Explain the methodologies which are to be adopted, demonstrate the compatibility of those methodologies with the proposed approach. The approach should also include a quality plan which outlines processes, procedures and associated resources, applied by whom and when, to meet the requirements and indicate how risks will be managed and what contribution can be made regarding value management.

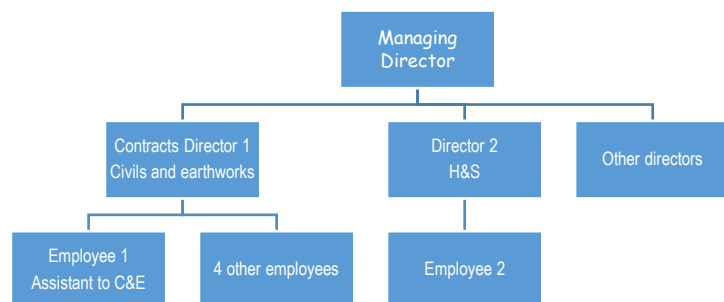
The tenderer must attach his/her approach paper to this page. The approach paper should not be longer than 5 pages.

SIGNED BY TENDERER:

FORM D3: TENDERER'S ORGANISATION AND STAFFING

Notes to tenderer:

1. The intention of this form is to demonstrate the tenderer's project structure, as well as the lines of responsibility between members of the project team and between the project team and the overall company structure. Attach own organogram to this form; do not populate the example diagram below.
2. Tenderers which are large companies may simplify the organogram by 'rolling up' portfolios e.g. combining directors/associates into one box of the organogram. However, the individual positions of the key persons within the structure must still be shown. The same person could fill multiple positions.
3. Joint Venture tenders require each element of the venture to submit separate organograms that show the individual structure of each member company and the lines of responsibility of the proposed personnel involved in the project. In addition, there must also be a combined organogram that indicates how the joint venture itself will function and the proposed share of the work will become a contractual obligation between the members of the joint venture.
4. State the city or town where the company's head office is located. The locality of regional or satellite offices, regardless of degree of autonomy or size is not required. Only submit the number of offices other than the head office. Do not count offices outside RSA.
5. Registered professional engineers, technicians or technologists means those who are involved in the road construction/transport industry. Registered professionals of other disciplines (e.g. mechanical) are considered as employees only.
6. In the lower table list those who will be involved in priority order of most to least responsibility for the service. Provide details of the key staff. Except for the MD, all of others must submit Forms D4. The same person may perform multiple roles.



Head Office:	<i>State City/Town. See note 4.</i>
Other Offices:	<i>Only list number, See note 4</i>
Registered Professionals: ECSA or in terms of ECSA approved International Agreements (PrEng, PrTechEng, PrCertEng, PrTechniEng)	<i>See note 5</i>
Registered Professionals: SACPCMP (Pr CM)	<i>See note 5</i>
Total Employees :	
% share in JV agreement:	<i>State 100% if no JV</i>

Name of employee	Position in team	Estimated monthly hours	Relevant specialist areas of knowledge demonstrating suitability for position
	Managing Director		
	Contracts Director		
	Contracts Manager		
	Construction manager (Contractor's Representative)		

SIGNED BY TENDERER:

FORM D4.1: TENDERER'S KEY PERSONNEL EXPERIENCE (CONTRACTS DIRECTOR)

CONTRACT SANRAL R.033-130-2019/3

FOR THE UPGRADING OF NATIONAL ROAD R33 SECTION 13 IN VAALWATER TOWN (KM 60.8 TO KM 63.0)

Note to tenderer:

1. The Tenderer shall provide details of the Contracts Director's professional registration, years' experience as well as details of previous experience required for this project.
2. The Contracts Director must meet the following minimum requirements as stipulated and the tenderer must append proof of registration to this form:

Professional Registration	Minimum Years of Relevant Experience
SACPCMP as PrCM or ECSA as PrEng or PrTechEng	15

3. Where ECSA registration is required, Professional Registration with the Engineering Council of South Africa (ECSA) or any other equivalent registration with an international body recognised by ECSA, i.e. Washington Accord, Dublin Accord and Sydney Accord, is accepted.
4. In the event that the Contracts Director are not in its permanent employment, the tenderer shall provide a signed undertaking from an organisation having the required personnel, stating that they will undertake the necessary work on behalf of the tenderer in terms of a sub-consultant agreement.
5. If the tenderer's experience does not meet the stipulated minimum requirement, or does not respond within stated period when requested to do so; the tender will be declared non-responsive in terms of clause C.3.13 (b) of the Tender Data.

NAME	POSITION IN TEAM	ECSA REG. No	ECSA CATEGORY	SACPCMP REG No	SACPCMP CATEGORY	No. OF YEARS EXPERIENCE
	CONTRACTS DIRECTOR					

Technical/Managerial Experience

(List only the most recent 5 projects of the key staff that the tenderer considers relevant to the specified scope of works)

CLIENT	DESCRIPTION OF PROJECT	PROJECT START DATE	PROJECT END DATE	VALUE	POSITION HELD	CONTACT PERSON AND FIRM	CONTACT No.

Comments:

I confirm that the information provided herein is true, that the projects reported, and the corresponding responsibilities are truly the experiences of the firm or consortium of firms tendering for this project.

SIGNED BY TENDERER:

FORM D4.2: TENDERER'S KEY PERSONNEL EXPERIENCE (CONTRACTS MANAGER)

CONTRACT SANRAL R.033-130-2019/3

FOR THE UPGRADING OF NATIONAL ROAD R33 SECTION 13 IN VAALWATER TOWN (KM 60.8 TO KM 63.0)

Note to tenderer:

1. The Tenderer shall provide details of the Contracts Manager's, professional registration, years' experience as well as details of previous experience required for this project.
2. The Contracts Manager must meet the following minimum requirements as stipulated and the tenderer must append proof of registration to this form:

Professional Registration	Minimum Years of Relevant Experience
SACPCMP as PrCM or ECSA as PrEng or PrTechEng	10

3. Where ECSA registration is required, Professional Registration with the Engineering Council of South Africa (ECSA) or any other equivalent registration with an international body recognised by ECSA, i.e. Washington Accord, Dublin Accord and Sydney Accord, is accepted.
4. In the event that the Contracts Manager are not in its permanent employment, the tenderer shall provide a signed undertaking from an organisation having the required personnel, stating that they will undertake the necessary work on behalf of the tenderer in terms of a sub-consultant agreement.
5. If the tenderer's experience does not meet the stipulated minimum requirement, or does not respond within stated period when requested to do so; the tender will be declared non-responsive in terms of clause C.3.13 (b) of the Tender Data..

NAME	POSITION IN TEAM	ECSA REG. NO	ECSA CATEGORY	SACPCMP REG NO	SACPCMP CATEGORY	NO. OF YEARS EXPERIENCE
	CONTRACTS MANAGER					

Technical/Managerial Experience

(List only the most recent 5 projects of the key staff that the tenderer considers relevant to the specified scope of

CLIENT	DESCRIPTION OF PROJECT	PROJECT START DATE	PROJECT END DATE	VALUE	POSITION HELD	CONTACT PERSON AND FIRM	CONTACT No.

Comments:

I confirm that the information provided herein is true, that the projects reported, and the corresponding responsibilities are truly the experiences of the firm or consortium of firms tendering for this project.

SIGNED BY TENDERER:

FORM D4.3: TENDERER'S KEY PERSONNEL EXPERIENCE (CONSTRUCTION MANAGER (CONTRACTOR'S REPRESENTATIVE))

CONTRACT SANRAL R.033-130-2019/3

FOR THE UPGRADING OF NATIONAL ROAD R33 SECTION 13 IN VAALWATER TOWN (KM 60.8 TO KM 63.0)

Note to tenderer:

1. The Tenderer shall provide details of the Construction Manager's (Contractor's Representative's), professional registration, years' experience as well as details of previous experience required for this project.
2. The Construction Manager (Contractor's Representative) must meet the following minimum requirements as stipulated and the tenderer must append proof of registration to this form:

Professional Registration	Minimum Years of Relevant Experience
SACPCMP as PrCM or ECSA as PrEng or PrTechEng	10

3. Where ECSA registration is required, Professional Registration with the Engineering Council of South Africa (ECSA) or any other equivalent registration with an international body recognised by ECSA, i.e. Washington Accord, Dublin Accord and Sydney Accord, is accepted.
4. In the event that the Construction Manager (Contractor's Representative) are not in its permanent employment, the tenderer shall provide a signed undertaking from an organisation having the required personnel, stating that they will undertake the necessary work on behalf of the tenderer in terms of a sub-consultant agreement.
5. The Construction Manager (Contractor's Representative) shall be; employed full time on the Works, the single point of accountability and responsible for the management of the construction works.
6. If the tenderer's experience does not meet the stipulated minimum requirement or does not respond within stated period when requested to do so; the tender will be declared non-responsive in terms of clause C.3.13 (b) of the Tender Data.

NAME	POSITION IN TEAM	ECSA REG. No	ECSA CATEGORY	SACPCMP REG No	SACPCMP CATEGORY	NO. OF YEARS EXPERIENCE
	CONSTRUCTION MANAGER (CONTRACTOR'S REPRESENTATIVE)					

Technical/Managerial Experience

(List only the most recent 5 projects of the key staff that the tenderer considers relevant to the specified scope of works)

CLIENT	DESCRIPTION OF PROJECT	PROJECT START DATE	PROJECT END DATE	VALUE	POSITION HELD	CONTACT PERSON AND FIRM	CONTACT No.

Comments:

I confirm that the information provided herein is true, that the projects reported, and the corresponding responsibilities are truly the experiences of the firm or consortium of firms tendering for this project.

SIGNED BY TENDERER:

FORM D5.1: TENDERER'S EXPERIENCE BASED ON COMPLETED PROJECTS

CONTRACT SANRAL R.033-130-2019/3

FOR THE UPGRADING OF NATIONAL ROAD R33 SECTION 13 IN VAALWATER TOWN (KM 60.8 TO KM 63.0)

Note to tenderer:

1. The tenderer shall provide details of previous experience required for this project in the spaces provided below and attach for each listed project, a performance evaluation certificates in the form of CIDB Contractor Performance Reports or an official reference letter from previous employer(s).
2. The Tenderer must have satisfactorily completed 3 project(s) with a minimum value R135,000,000.00 between 1 st January 2007 and the date of submission.
3. The Tenderer shall have completed each of the listed projects as either a prime contractor or joint venture member or management contractor or sub-contractor. The listed project's scope of work be shall substantially match that of the subject project's scope of work.
4. Each listed project shall have a Performance Rating not less than zero (0) Adequate, as rated in terms of the CIDB Performance Rating system or official reference letters from previous employer(s).
5. For listed projects where the Tenderer participated as a joint venture member or sub-contractor, the Tenderer shall state value (V) limited to his/her share of certified work.
6. If the Tenderer is a joint venture, the value of projects completed by the individual joint venture members can be combined and shall be treated as one project to determine whether the requirement of the minimum value of a single contract has been met. In the case of combined projects, each contract performed by each member shall exceed fifty percent (50%) of the minimum value of a single contract as required for single entity. In determining whether the joint venture meets the requirement of total number of projects, the number of projects completed by all JV members each of value equal or more than the minimum value required shall be aggregated. For the afore-mentioned purpose, projects which are combined to meet the minimum value shall be treated as one contract.
7. If one or more of the listed projects does not meet minimum requirements as stipulated above, the tender shall be declared non-responsive in terms of clause C.3.13 (b) of the Tender Data.

List only projects completed which comply the above Notes to Tenderer.

CLIENT	DESCRIPTION OF PROJECT	PROJECT START DATE	PROJECT END DATE	VALUE OF WORK (i.e. the service provided) inclusive of VAT (Rand)	CONTACT PERSON AND FIRM	CONTACT NUMBER	CIDB EQUIVALENT PERFORMANCE RATING (NOT REQUIRED WHERE AN OFFICIAL REFERENCE LETTERS FROM PREVIOUS EMPLOYER(S) IS ATTACHED)

Comments:

I confirm that the information provided herein is true, that the projects reported, and the corresponding responsibilities are truly the experiences of the firm or consortium of firms tendering for this project.

SIGNED BY TENDERER:

FORM D5.2: TENDERER'S EXPERIENCE BASED ON PROJECTS IN PROGRESS

CONTRACT SANRAL R.033-130-2019/3

FOR THE UPGRADING OF NATIONAL ROAD R33 SECTION 13 IN VAALWATER TOWN (KM 60.8 TO KM 63.0)

Note to tenderer:

1. Submission of this form is optional. This form must be submitted if the tenderer does not comply with the requirements of Form D5.1, and elects to list projects that are in progress to comply with afore- mentioned requirements..
2. The Tenderer shall list projects in progress as stipulated under Table 1 below which commenced before 1st January 2017.
3. The Tenderer shall list 3 project(s) in progress with a minimum value R135 000 000 which commenced after 1st January 2017. Each listed project shall have a certified value of work that exceeds 80% of its awarded value.
b
4. The Tenderer shall be employed on each listed project as either a prime contractor or joint venture member or management contractor or subcontractor. The listed project's scope of work shall substantially match that of the subject project's scope of work.
5. Each listed project shall have a Performance Rating not less than zero (0) Adequate, as rated in terms of the CIDB Performance Rating system or official reference letters from previous employer(s). The Performance Rating and certified value of work at closing date must be confirmed by the Project Employer or Project Engineer in writing.
6. For listed projects where the Tenderer participated as a joint venture member or sub-contractor, the Tenderer shall state value (V) limited to his/her share of certified work.
7. If the Tenderer is a joint venture, the value of projects completed by the individual joint venture members can be combined and shall be treated as one contract to determine whether the requirement of the minimum value of a single contract has been met. In the case of combined projects, each contract performed by each member shall exceed fifty percent (50%) of the minimum value of a single contract as required for single entity. In determining whether the joint venture meets the requirement of total number of projects, the number of projects completed by all JV members each of value equal or more than the minimum value required shall be aggregated. For the afore-mentioned purpose, projects which are combined to meet the minimum value shall be treated as one contract.
8. If one or more of the listed projects does not meet minimum requirements as stipulated above, the tender shall be declared non-responsive in terms of clause C.3.13 (b) of the Tender Data.

List only projects in progress which comply the above Notes to Tenderer.

CLIENT	DESCRIPTION OF PROJECT	PROJECT START DATE	PROJECT END DATE	AWARD VALUE OF WORK (i.e. the service provided) inclusive of VAT (Rand)	VALUE OF WORKS CERTIFIED BY THE ENGINEER	CONTACT PERSON AND FIRM	CONTACT NUMBER	CIDB PERFORMANCE RATING

Comments:

I confirm that the information provided herein is true, that the projects reported, and the corresponding responsibilities are truly the experiences of the firm or consortium of firms tendering for this project.

SIGNED BY TENDERER:

FORM D6: TENDERER'S INDICATIVE PROGRAM

CONTRACT SANRAL R.033-130-2019/3
FOR THE UPGRADE OF NATIONAL ROAD R33 SECTION 13 IN VAALWATER TOWN (KM 60.8
TO KM 63.0

Notes to tenderer:

1. The tenderer shall attach an indicative programme, reflecting the:
 - Contract period;
 - proposed sequence or order of execution of the work;
 - Resources anticipated; and
 - tempo of execution of the various activities comprising the work for this contract.
2. The programme shall be in accordance with the information provided in Form D1: Schedule of Tenderer's Plant and Equipment, Form D2: Tenderer's Method Statement, Form D7: Schedule of Estimated Monthly Expenditure, Form D8: Schedule of Subcontractors, and with all other aspects of the tender.
3. If a tenderer wishes to submit an alternative tender then this form, appropriately completed, shall also be attached to the Pricing Schedule for the alternative proposal.

SIGNED BY TENDERER:

FORM D7: SCHEDULE OF ESTIMATED MONTHLY EXPENDITURE

CONTRACT SANRAL R.033-130-2019/3
FOR THE UPGRADE OF NATIONAL ROAD R33 SECTION 13 IN VAALWATER TOWN (KM 60.8
TO KM 63.0

Note to tenderer:

If a tenderer wishes to submit an alternative tender then this form, appropriately completed, shall also be attached to the Pricing Schedule for the alternative proposal.

The tenderer shall state his estimated value of the work to be completed every month, based on his preliminary programme and his tendered unit rates, in the table below.

CERTIFICATE / MONTH	VALUE	CERTIFICATE / MONTH	VALUE
1	R.....	TOTAL b/f	R.....
2	R.....	11	R.....
3	R.....	12	R.....
4	R.....	13	R.....
5	R.....	14	R.....
6	R.....	15	R.....
7	R.....	16	R.....
8	R.....	17	R.....
9	R.....	18	R.....
10	R.....	19(FINAL)*	R.....
TOTAL c/f	R.....		
		TOTAL: R.....	

* Final payment at end of Defects Notification Period is for balance of retention and any other payments due.

SIGNED BY TENDERER:

FORM D8: SCHEDULE OF SUBCONTRACTORS

CONTRACT SANRAL R.033-130-2019/3

FOR THE UPGRADING OF NATIONAL ROAD R33 SECTION 13 IN VAALWATER TOWN (KM 60.8 TO KM 63.0)

With regard to sub-clause 4.4 of the FIDIC Conditions of Contract as amended:

Notes to tenderer:

1. The tenderer shall list below the items of work he intends to subcontract.
2. Acceptance of this tender shall not be construed as approval of all or any of the listed subcontractors. Should any or all of the subcontractors not be approved subsequent to the acceptance of the tender, it shall in no way invalidate this tender, and the tendered unit rates for the various items of work shall remain final and binding, even in the event of a subcontractor not listed below being approved by the engineer.

ITEM OF WORK	NAME OF SUBCONTRACTOR (IF KNOWN) AND INDICATE INTENDED SPECIALIST SUBCONTRACTORS WITH "S"	% VALUE OF THE TENDER AMOUNT SUB- CONTRACTED	B-BBEE STATUS LEVEL OF SUB- CONTRACTOR	STATE IF TARGETED ENTERPRISE	STATE IF EME

SIGNED BY TENDERER:

FORM D9: CORPORATE SOCIAL INVESTMENT

CONTRACT SANRAL R.033-130-2019/3
FOR THE UPGRADING OF NATIONAL ROAD R33 SECTION 13 IN VAALWATER TOWN (KM 60.8 TO KM 63.0)

With regard to clause D1012: Community Development, of the Project Specifications:

Notes to tenderer:

1. The tenderer shall list below his own Corporate Social Investment initiatives that will actively be pursued for this project.
2. The Corporate Social Investment initiatives will be evaluated and applied as objective criteria in terms of section 2(1)(f) of the Preferential Procurement Policy Framework Act, 2000.

CSI INITIATIVE	COMMUNITY AFFECTED	ESTIMATED RAND VALUE OF INITIATIVE	ESTIMATED TIME FOR IMPLEMENTATION

SIGNED BY TENDERER:

FORM E1: QUALITY ASSURANCE: UTFC

CONTRACT SANRAL R.033-130-2019/3
FOR THE UPGRADING OF NATIONAL ROAD R33 SECTION 13 IN VAALWATER TOWN (KM 60.8 TO
KM 63.0)

The tenderer shall attach to this Form sufficient details from his Quality Assurance Plan to indicate the properties of the materials on which he has based his tender prices for the Ultra-Thin Friction Course surfacing (UTFC) that he proposes using on this Contract.

The Quality Assurance Plan to be submitted to the Engineer after award shall include that of the binder supplier and/or the tack coat supplier (if applicable).

The minimum details to be given with this tender shall include (where applicable):

1. UTFC MIX

- 1.1 Type/s and percentage/s of natural aggregate/s
- 1.2 Type and percentage of active filler
- 1.3 Type and percentage of bitumen
- 1.4 Type and percentage of modifier in bituminous binder
- 1.5 Ranges of mix proportions for:
 - 1.5.1 10.0mm Stone
 - 1.5.2 Crusher Dust passing the 2.00mm sieve
 - 1.5.3 Filler passing the 0,075mm sieve
- 1.6 Permissible Deviations from Target Grading

2. TACK

- 2.1 Type of basic material (penetration-grade bitumen, emulsion, other) (If emulsion, give type of emulsion and percentage bitumen)
- 2.2 Type and percentage of modifier
- 2.3 Application rate (nett cold bitumen)

3. TESTING (WHICH TESTS, POINT/S OF TESTING, FREQUENCY)

- 3.1 All raw materials used in UTFC mix
- 3.2 UTFC mix
- 3.3 All raw material in tack
- 3.4 Tack
- 3.5 Temperatures
 - 3.5.1 UTFC
 - 3.5.1.1 Modified Binder manufacture
 - 3.5.1.2 Binder at mixing plant
 - 3.5.1.3 Mixing
 - 3.5.1.4 Storage
 - 3.5.1.5 Paving
 - 3.5.2 Tack
 - 3.5.2.1 Manufacture (if applicable)
 - 3.5.2.2 Storage
 - 3.5.2.3 Application
- 3.6 Remedial steps to be taken in event of non-conformance

FORM E1: QUALITY ASSURANCE: UTFC (continued)

4. MANUFACTURE, TRANSPORT, CONSTRUCTION

4.1 Types, sizes and capacities of:

- 4.1.1 Mixing plant and related equipment
- 4.1.2 Cold storage (number and sizes of bins)
- 4.1.3 Hot storage
- 4.1.4 Transport vehicles (number, capacity, thermal protection)
- 4.1.5 Paver/s (including level-control system)
- 4.1.6 Roller/s
- 4.1.7 Other plant/equipment

4.2 Methods proposed for (including procedures to be followed to ensure conformance to specification):

- 4.2.1 Manufacture of binder
- 4.2.2 Storage of binder
- 4.2.3 Storage of aggregates
- 4.2.4 Manufacture of hot mix
- 4.2.5 Storage of hot-mix
- 4.2.6 Transport of hot-mix
- 4.2.7 Manufacture of tack
- 4.2.8 Preparation of surface to receive tack coat and UTFC
- 4.2.9 Application of tack
- 4.2.10 Tipping, paving and rolling of UTFC
- 4.2.11 Manufacturing and construction tolerances (if different from those specified in the Contract Documents)

4.3 Further details regarding paving equipment

- 4.3.1 Type of equipment, e.g. Self-priming paver with hopper and auger system capable of passing the mix over the spray bar, or other.
- 4.3.2 Method and equipment used for thickness and level controls
- 4.3.3 Type of spray bar used for tack application, e.g. built-in, variable-width spray bar or other.

5. PERSONNEL EMPLOYED ON ALL ACTIVITIES AND QUALITY CONTROL

6. ANY OTHER MATTERS WHICH RELATE TO THE QUALITY ASSURANCE PLAN WHICH THE TENDERER CONSIDERS MAY BE OF ASSISTANCE IN TENDER ADJUDICATION

SIGNED BY TENDERER:.....

FORM E2: PERFORMANCE REPORT: UTFC

CONTRACT SANRAL R.033-130-2019/3

FOR THE UPGRADING OF NATIONAL ROAD R33 SECTION 13 IN VAALWATER TOWN (KM 60.8 TO KM 63.0)

Note to tenderer:

The tenderer shall enter in the spaces provided below a complete list of Contracts on which he has constructed an ultra-thin friction course (UTFC) surfacing (or similar approved alternative). This information is deemed to be material to the award of the Contract.

EMPLOYER (Name, Telephone no, Fax no.)	CONSULTING ENGINEER (Name, Telephone no, Fax no.)	QUANTITY OF UTFC (m ² & tonnes)	VALUE OF UTFC WORK	YEAR COMPLETED

SIGNED BY TENDERER:.....

FORM E3: CONSTRAINTS FOR UTFC PRODUCTS AND PROCESSES

CONTRACT SANRAL R.033-130-2019/3
FOR THE UPGRADING OF NATIONAL ROAD R33 SECTION 13 IN VAALWATER TOWN (KM 60.8 TO
KM 63.0)

The various constraints (if any) applicable to each product/process shall be listed separately.

PRODUCT/PROCESS	CONSTRAINTS
NOT APPLICABLE	

SIGNED BY TENDERER:.....

FORM E4: WIRE ROPE INFORMATION

CONTRACT SANRAL R.033-130-2019/3
FOR THE UPGRADING OF NATIONAL ROAD R33 SECTION 13 IN VAALWATER TOWN (KM 60.8 TO
KM 63.0)

1. DETAILS OF SUPPLIER OF CABLES AND POSTS:

Name:

Address:

ATTACH TO THIS PAGE OR INCLUDE SEPARATELY:

Proof of the patent holder's approval of the supplier.

A design and installation drawing of the wire rope.

SIGNED BY TENDERER:

FORM E5: PHOTOMETRIC FILES

CONTRACT SANRAL R.033-130-2019/3
FOR THE UPGRADING OF NATIONAL ROAD R33 SECTION 13 IN VAALWATER TOWN (KM 60.8 TO
KM 63.0)

Note to Tenderer:

The tenderer is required to prepare and submit a site lighting design in the form of a simulation report utilizing the simulation criteria listed below. The design simulation report shall be used by the evaluation panel to determine Luminaire compliance.

Luminaires should be photometered according to the C-Gamma system as detailed in CIE

Publication No. 27. For LED luminaires with non-replaceable LED modules, the intensity values

shall be given in candela. The results should be published in an intensity distribution table,

indicating the intensity in cd/klm at each horizontal and vertical angle. This intensity distribution

table should be converted by an accredited test facility or luminaire supplier (or both) into a suitable

electronic format for use with any of the commercially available street lighting computer programs. (Reference clause 7.4 ARP 035:2014).

The Tenderer shall supply an electronic copy of the photometric files (preferred format: .ldt/ .ies) on Flash drive and a printed copy of the simulation report of the proposed luminaires. Suppliers to also provide brochures detailing the technical specifications of the proposed luminaires.

It is vital that valid and readable photometric files are submitted at time of tender. Valid and readable files will be used to carry out simulation reports to verify paper copy simulation reports submitted.

Photometric files will also be tested by the client to verify that luminaires are compliant. The luminaire simulation report shall be done on any reputable Windows based commercially available streetlighting computer program (the latest DIALux software packages preferred) and submitted in paper copy at time of tender. The simulation results are to comply with the criteria in SANS10098-1:2007.

Only offered luminaires compliant with the minimum requirements will be further considered.

Luminaires are to be suitable for use as per design criteria below.

Failure to submit this information may render the Tenderer non-responsive.

Proof must be submitted in the simulation report that the photometric files meet either SANS 10098 or CIE Publication minimum requirements.

SIGNED BY TENDERER:.....

(A) DESIGN CRITERIA

Maintenance factor of 0.9 (maximum) shall be used in all lighting simulations

*A1a -	Class A1 Roadway, without Median, for speed limits exceeding 90km/h, and maximum traffic volume of >600 vehicles per hour per lane at night
*A3b -	Class A3 Roadway, without Median, for speed limits not exceeding 60km/h, and maximum traffic volume of 300 vehicles per hour per lane at night
*A3e -	Class A3 Roadway, with Median, for speed limits not exceeding 60km/h, and maximum traffic volume of 600 vehicles per hour per lane at night

NOTE

- a) The values apply to straight sections of the road, and to curves and intersections
- b) The luminance values apply to dry road surfaces of any material
- c) L_n = Minimum average luminance, cd/m²;

U_o = Overall luminance uniformity, min;

U_L = Longitudinal luminance uniformity, min; and

TI = Threshold increment, %, max.

d) Maintenance Factor

The Maintenance Factor of an LED luminaire is to be derived from the product of light source lumen depreciation (LLD), luminaire survival factor (LSF) and luminaire maintenance factor (LMF) i.e. $MF = LLD \times LSF \times LMF$.

LLD - Lamp lumen depreciation factor is information provided by the luminaire supplier.

LSF - lamp survival factor. A factor of one (1) to be used for tender purposes.

LMF - luminaire maintenance factor is dependent on the ingress protection of the luminaire, pollution category of the street and the cleaning interval of the luminaire. A clean, in-land environment with a twelve (12) month cleaning cycle to be considered for the dirt depreciation factor for tender purposes.

Maximum maintenance factors referenced are to be adhered to. Note these are maximum values and are NOT default values for all luminaires.

Maintenance factor of 0.9 (maximum) shall be used in all lighting simulations issued for tender. Tenderers achieving higher MF values to be submitted for information purposes.

(B) LUMINAIRE SPECIFICATION SCHEDULE

The minimum specification for luminaires tendered are noted below.

Tenderers are to note that should the luminaires be found to be non-compliant with the requirements, may make the Tender non-responsive.

NO	Requirements	Minimum requirements
1	Luminaire Type	LED Street light
2	Performance Requirements	<p>CIE 121, The photometry and gonio photometry of luminaires.</p> <p>SANS 9227/ISO 9227:2007, Corrosion tests in artificial atmospheres – Salt spray tests. Amdt 2</p> <p>SANS 10098-1, Public lighting – Part 1: The lighting of public thoroughfares.</p> <p>SANS 60529/IEC 60529, Degrees of protection provided by enclosures (IP Code).</p> <p>SANS 60598-1/IEC 60598-1, Luminaires – Part 1: General requirements and tests.</p> <p>SANS 60598-2-1/IEC 60598-2-1, Luminaires – Part 2: Particular requirements – Section 1: Fixed general-purpose luminaires.</p> <p>SANS 60598-2-3/IEC 60598-2-3, Luminaires – Part 2-3: Particular requirements – Luminaires for road and street lighting.</p>
3	Luminaire efficacy	>100 lumens/watt
4	Colour Temperature	CCT maximum 4000K Neutral White CRI≥70
5	LED Engine	Modular (Tenderers to state number of LED's per module)
6	LED Driver Current	Maximum 700 mA
7	LMS compatibility	<p>Dimming 1 - 10V (flicker and noise free form 10 - 100%)</p> <p>Luminaires fitted with NEMA/ANSI C136.41 compliant 7-pin socket</p>
8	Operating Voltage	230VAC ± 10 %, 50 Hz
9	Frequency	50Hz
10	Electrical class	Class I (SANS 62262)
11	Power Factor	>0.9

12	Harmonic Distortion	THD shall not exceed 5% of the supply voltage and no single harmonic shall exceed 3%.
13	Surge Arrestor	Nominal discharge current: 10kA Voltage protection level: 2kV Response time: $\leq 25\text{nS}$ Luminaire cut-out
14	Lifetime at 25oC	>50 000 hrs (lumen depreciation not more than 30% - L70)
15	Operating Temperature	-5°C to +45°C No external part of luminaire shall exceed temperature of 70°C during or after operation
16	Thermal Management	Optimal external heat exchange surface Temperature sensor and cut out to prevent overheating
17	IP Rating: Control gear compartment Optical compartment	IP66 certified (SANS 60598)
18	Housing	Weather and corrosion proof. Marine grade die cast aluminium alloy grade AC-44300 or better in accordance with DIN EN 1706
19	Front Protector	Heat and Impact resistant. High impact clear glass, with sealed joint in housing
20	Impact resistance	Per SANS 62262 >IK 08
21	Screw, bolts and metal parts	Stainless steel S316
22	Finish	Unpainted Aluminium

(C) DESIGN RESULTS

Tenderer to provide the design results from the lighting simulation. To match hard copies submitted with tender.

ITEM	SIM-1	SIM-2	SIM-3	SIM-4
Pole Spacing (m)				
Luminance (cd/m2)				

Overall Uniformity				
Longitudinal Uniformity				
Threshold increment				

(c) LUMINAIRE DATA

Tenderer to provide information used in the simulation to achieve the design results.

ITEM	SIM-1	SIM-2	SIM-3	SIM-4
Light fitting Make				
Luminaire Wattage (W)				
Lamp Output (Lumen)				
Colour Temperature (K)				
CRI (%)				
Angle of tilt (degrees)				
No. of luminaires per pole				
Boom length				
Overhang				
Maintenance factor				
Local manufacturer				
If imported, local support details				
Reference sites in South Africa where luminaires are installed.				

Failure to submit this information may render the Tenderer non-responsive.

(D) SITE VERIFICATION OF DESIGN

It is a requirement that the lighting level specified is achieved with proposed luminaires which will be verified on site with post lux readings. In the event that the proposed luminaire does not perform as proposed by the Contractors lighting designer, the tenderer may be liable to replace such under-performing luminaires with an Engineer approved luminaire which shall be used for further replacements within the contract.

At the completion of the physical works, the Contractors Lighting Designer, accompanied by the Engineer, shall check and then certify that:

- a) The project has met all the requirements of the project brief, the standards and specifications
- b) All the documentation detailed below has been completed, is correct and has been forwarded to the Clients representatives.

At the end of the defects liability period, the Contractors Lighting Designer, accompanied by the Engineer, shall carry out an audit and certify that lighting poles are vertical and luminaires have been installed and operate correctly and are at the correct mounting height and at the correct angle. Luminance and Illuminance readings are to be taken to verify the installation is achieving within 10% of the design.

The following documentation shall be provided:

- a) Luminance and Illuminance readings of each lighting installation
- b) Electrical Certificate of Compliance for the complete scheme
- c) As-built information in a format suitable to be loaded into the Clients Lighting Asset System

Failure to comply with the specifications may make the Tenderer non-responsive.

SIGNATURE OF TENDERER:

FORM E6: LIFE CYCLE COST TABLE (MAINTENANCE, INSTALLATION AND ENERGY COSTS)

Note to Tenderer:

The information provided for the two tables as requested below, shall be used by the evaluation panel to determine the Life Cycle cost over a fifteen-year period. The total for maintenance (Table 1) shall be added to the total for Installation and energy consumption (Table 2). Use Excel files to calculate, thereafter transfer information onto tables below.

Should the best Life Cycle Costs not be from the lowest offer (price and preference) then the difference between the lowest offer and the offer being considered shall be compared to the best savings offered.

E6/1: LIFE CYCLE COSTS – TYPE L1 and L2 LUMINAIRE (SIM-1 Simulation)

L1 Costs are to be shown for 1 km of Class A1 Roadway, without Median, for speed limits exceeding 90km/h, and maximum traffic volume of >600 vehicles per hour per lane at night to SANS 10098 and shall comply with $L_n \geq 2.0 \text{ cd/m}^2$, $U_o \geq 0.4$, $U_I \geq 0.7$, $T_I \leq 15\%$ for a road width of 7.4m. Mounted on a 15m Scissor Mast.

L2 Costs are to be shown for 1 km of Pedestrian Lighting along roadway without median to SANS 10098 and shall comply with Class 5, $E_{ave} \geq 7.5 \text{ lx}$ and $E_{min} \geq 0.4 \text{ lx}$.

(a) TABLE 1: Maintenance Costs

Yr	Luminaire Type	Qty of luminaires per mast	Qty of luminaires (1 km)	Burning Hrs / Annum	Luminaire Life Hrs	Luminaire Replacement: Material + Labour	Labour cost to clean luminaire glass	Total Maintenance Cost / Annum Col (7+8) x (4)
(1)	(2)	(3)	(4)	(5)	(6)	(7)	(8)	(9)
1				4000				
2				4000				
3				4000				
4				4000				
5				4000				
6				4000				
7				4000				
8				4000				
9				4000				

10				4000				
11				4000				
12				4000				
13				4000				
14				4000				
15				4000				
	TOTAL (a) Maintenance Cost: R							

Note: Luminaire replacement cost (7) to be included when Luminaire life hours (6) reaches total burning hours (5) x years (1). All rates to be as quoted and to exclude Value Added Tax (VAT).

NAME OF TENDERER:

DATE:

SIGNATURE OF TENDERER:

(b) TABLE 2: Installation and Energy Costs

COST OF OWNERSHIP (per ARP 035, Table 1)

1	2	3	4
Item	Criteria	Unit	Value
[1]	Luminaire Wattage, (total wattage if more than 1 luminaires on pole)	W	
[2]	Pole spacing	m	35
[3]	Number of years to be considered for evaluation	years	15
[4]	Electricity cost per kWh, averaged over the projected period	R	3.71
[5]	Cost of installed pole, inclusive of internal wiring	R	
[6]	Price of luminaire, inclusive of light source (Unit x Qty on pole)	R	
[7]	Scheme price: $(1000/[2]) \times (1500 + [5] + ([6]))$	R	

[8]	Power consumption per km: $(1000/[2]*([1]/1000))$	kW	
[9]	Annual Energy cost per km: $[4]*4000*[8]$	R	
[10]	Cost of Ownership for the evaluation period: $[7]+[3]*[9]$	R	

Notes:

Shaded area values not to be changed.

[1] = Total wattage per pole

[5] = Tendered price

[6] = Total tendered price of luminaires per pole

All rates to be as tendered and to exclude Value Added Tax (VAT).

(b) TABLE 3: Total Life Cycle Cost for 1km of Lighting

1	TOTAL COST OF MAINTENANCE (From Table 1)	R	
2	TOTAL COST OF OWNERSHIP (From Table 2)	R	
3	TOTAL LIFE CYCLE COST FOR 1KM OF LIGHTING	R	

Tenderers to note: Life cycle costs declared on FORM E6 would be considered as part of the tender evaluation and considered when making final recommendation for contract award.

This clause shall be applied as objective criteria in terms of section 2(1)(f) of the Preferential Procurement Policy Framework Act, 2000 and as compelling and justifiable reasons in terms of Conditions of Tender clause 5.11

SIGNATURE OF TENDERER:

E6/2: LIFE CYCLE COSTS – TYPE L3 and L2 LUMINAIRE (SIM-2 Simulation)

L3 Costs are to be shown for 1 km of Class A1 Roadway, without Median, for speed limits exceeding 90km/h, and maximum traffic volume of >600 vehicles per hour per lane at night to SANS 10098 and shall comply with $L_n \geq 2.0 \text{ cd/m}^2$, $U_o \geq 0.4$, $U_l \geq 0.7$, $T_l \leq 15\%$ for a road width of 14.8m. Mounted on a 10m Scissor Mast.

L2 Costs are to be shown for 1 km of Pedestrian Lighting along roadway without median to SANS 10098 and shall comply with Class 5, $E_{ave} \geq 7.5 \text{ lx}$ and $E_{min} \geq 0.4 \text{ lx}$.

(a) TABLE 1: Maintenance Costs

Yr	Luminaire Type	Qty of luminaires per mast	Qty of luminaires (1 km)	Burning Hrs / Annum	Luminaire Life Hrs	Luminaire Replacement: Material + Labour	Labour cost to clean luminaire glass	Total Maintenance Cost / Annum Col (7+8) x (4)
(1)	(2)	(3)	(4)	(5)	(6)	(7)	(8)	(9)
1				4000				
2				4000				
3				4000				
4				4000				
5				4000				
6				4000				
7				4000				
8				4000				
9				4000				
10				4000				
11				4000				
12				4000				
13				4000				
14				4000				
15				4000				
TOTAL (a) Maintenance Cost: R								

Note: Luminaire replacement cost (7) to be included when Luminaire life hours (6) reaches total burning hours (5) x years (1). All rates to be as quoted and to exclude Value Added Tax (VAT).

SIGNATURE OF TENDERER:

(b) TABLE 2: Installation and Energy Costs

COST OF OWNERSHIP (per ARP 035, Table 1)

1	2	3	4
Item	Criteria	Unit	Value
[1]	Luminaire Wattage, (total wattage if more than 1 luminaires on pole)	W	
[2]	Pole spacing	m	35
[3]	Number of years to be considered for evaluation	years	15
[4]	Electricity cost per kWh, averaged over the projected period	R	3.71
[5]	Cost of installed pole, inclusive of internal wiring	R	
[6]	Price of luminaire, inclusive of light source (Unit x Qty on pole)	R	
[7]	Scheme price: $(1000/[2]) \times (1500 + [5] + ([6]))$	R	
[8]	Power consumption per km: $(1000/[2]) \times ([1]/1000)$	kW	
[9]	Annual Energy cost per km: $[4] \times 4000 \times [8]$	R	
[10]	Cost of Ownership for the evaluation period: $[7] + [3] \times [9]$	R	

Notes:

Shaded area values not to be changed.

[1] = Total wattage per pole

[5] = Tendered price

[6] = Total tendered price of luminaires per pole

All rates to be as tendered and to exclude Value Added Tax (VAT).

(b) TABLE 3: Total Life Cycle Cost for 1km of Lighting

1	TOTAL COST OF MAINTENANCE (From Table 1)	R	
2	TOTAL COST OF OWNERSHIP (From Table 2)	R	

3	TOTAL LIFE CYCLE COST FOR 1KM OF LIGHTING	R	
---	---	---	--

Tenderers to note: Life cycle costs declared on FORM E6 would be considered as part of the tender evaluation and considered when making final recommendation for contract award.

This clause shall be applied as objective criteria in terms of section 2(1)(f) of the Preferential Procurement Policy Framework Act, 2000 and as compelling and justifiable reasons in terms of Conditions of Tender clause 5.11

SIGNATURE OF TENDERER:

E6/3: LIFE CYCLE COSTS – TYPE L4 and L2 LUMINAIRE (SIM-3 Simulation)

L4 Costs are to be shown for 1 km of Class A3 Roadway, without Median, for speed limits not exceeding 60km/h, and maximum traffic volume of 300 vehicles per hour per lane at night to SANS 10098 and shall comply with $L_n \geq 0.6 \text{ cd/m}^2$, $U_o \geq 0.4$, $U_l \geq 0.5$, $T_l \leq 20\%$ for a road width of 14.8m. Mounted on a 10m Scissor Mast.

L2 Costs are to be shown for 1 km of Pedestrian Lighting along roadway without median to SANS 10098 and shall comply with Class 5, $E_{ave} \geq 7.5 \text{ lx}$ and $E_{min} \geq 0.4 \text{ lx}$.

(a) TABLE 1: Maintenance Costs

Yr	Luminaire Type	Qty of luminaires per mast	Qty of luminaires (1 km)	Burning Hrs / Annum	Luminaire Life Hrs	Luminaire Replacement: Material + Labour	Labour cost to clean luminaire glass	Total Maintenance Cost / Annum Col (7+8) x (4)
(1)	(2)	(3)	(4)	(5)	(6)	(7)	(8)	(9)
1				4000				
2				4000				
3				4000				
4				4000				
5				4000				
6				4000				
7				4000				
8				4000				
9				4000				
10				4000				
11				4000				
12				4000				
13				4000				
14				4000				
15				4000				
TOTAL (a) Maintenance Cost: R								

Note: Luminaire replacement cost (7) to be included when Luminaire life hours (6) reaches total burning hours (5) x years (1). All rates to be as quoted and to exclude Value Added Tax (VAT).

NAME OF TENDERER:

DATE:

SIGNATURE OF TENDERER:

(b) TABLE 2: Installation and Energy Costs

COST OF OWNERSHIP (per ARP 035, Table 1)

1	2	3	4
Item	Criteria	Unit	Value
[1]	Luminaire Wattage, (total wattage if more than 1 luminaires on pole)	W	
[2]	Pole spacing	m	35
[3]	Number of years to be considered for evaluation	years	15
[4]	Electricity cost per kWh, averaged over the projected period	R	3.71
[5]	Cost of installed pole, inclusive of internal wiring	R	
[6]	Price of luminaire, inclusive of light source (Unit x Qty on pole)	R	
[7]	Scheme price: $(1000/[2] \times (1500 + [5] + [6]))$	R	
[8]	Power consumption per km: $(1000/[2] \times ([1]/1000))$	kW	
[9]	Annual Energy cost per km: $[4] \times 4000 \times [8]$	R	
[10]	Cost of Ownership for the evaluation period: $[7] + [3] \times [9]$	R	

Notes:

Shaded area values not to be changed.

[1] = Total wattage per pole

[5] = Tendered price

[6] = Total tendered price of luminaires per pole

All rates to be as tendered and to exclude Value Added Tax (VAT).

(b) TABLE 3: Total Life Cycle Cost for 1km of Lighting

1	TOTAL COST OF MAINTENANCE (From Table 1)	R	
2	TOTAL COST OF OWNERSHIP (From Table 2)	R	
3	TOTAL LIFE CYCLE COST FOR 1KM OF LIGHTING	R	

Tenderers to note: Life cycle costs declared on FORM E6 would be considered as part of the tender evaluation and considered when making final recommendation for contract award.

This clause shall be applied as objective criteria in terms of section 2(1)(f) of the Preferential Procurement Policy Framework Act, 2000 and as compelling and justifiable reasons in terms of Conditions of Tender clause 5.11

NAME OF TENDERER:

DATE:

SIGNATURE OF TENDERER:

E6/4: LIFE CYCLE COSTS – TYPE L5 x 2 LUMINAIRES (SIM-4 Simulation)

L5 Costs are to be shown for 1 km of Class A3 Roadway, with Median, for speed limits not exceeding 60km/h, and maximum traffic volume of 600 vehicles per hour per lane at night to SANS 10098 and shall comply with $L_n \geq 0.8 \text{ cd/m}^2$, $U_o \geq 0.4$, $U_l \geq 0.5$, $TI \leq 20\%$ for a road width of 14.8m. Mounted on a 10m Scissor Mast.

(a) TABLE 1: Maintenance Costs

Yr	Luminaire Type	Qty of luminaires per mast	Qty of luminaires (1 km)	Burning Hrs / Annum	Luminaire Life Hrs	Luminaire Replacement: Material + Labour	Labour cost to clean luminaire glass	Total Maintenance Cost / Annum Col (7+8) x (4)
(1)	(2)	(3)	(4)	(5)	(6)	(7)	(8)	(9)
1				4000				
2				4000				
3				4000				
4				4000				
5				4000				
6				4000				
7				4000				
8				4000				
9				4000				
10				4000				
11				4000				
12				4000				
13				4000				
14				4000				
15				4000				
TOTAL (a) Maintenance Cost: R								

Note: Luminaire replacement cost (7) to be included when Luminaire life hours (6) reaches total burning hours (5) x years (1). All rates to be as quoted and to exclude Value Added Tax (VAT).

SIGNATURE OF TENDERER:

(b) TABLE 2: Installation and Energy Costs

COST OF OWNERSHIP (per ARP 035, Table 1)

1	2	3	4
Item	Criteria	Unit	Value
[1]	Luminaire Wattage, (total wattage if more than 1 luminaires on pole)	W	
[2]	Pole spacing	m	35
[3]	Number of years to be considered for evaluation	years	15
[4]	Electricity cost per kWh, averaged over the projected period	R	3.71
[5]	Cost of installed pole, inclusive of internal wiring	R	
[6]	Price of luminaire, inclusive of light source (Unit x Qty on pole)	R	
[7]	Scheme price: $(1000/[2]) \times (1500 + [5] + [6])$	R	
[8]	Power consumption per km: $(1000/[2]) \times ([1]/1000)$	kW	
[9]	Annual Energy cost per km: $[4] \times 4000 \times [8]$	R	
[10]	Cost of Ownership for the evaluation period: $[7] + [3] \times [9]$	R	

Notes:

Shaded area values not to be changed.

[1] = Total wattage per pole

[5] = Tendered price

[6] = Total tendered price of luminaires per pole

All rates to be as tendered and to exclude Value Added Tax (VAT).

(b) TABLE 3: Total Life Cycle Cost for 1km of Lighting

1	TOTAL COST OF MAINTENANCE (From Table 1)	R	
2	TOTAL COST OF OWNERSHIP (From Table 2)	R	
3	TOTAL LIFE CYCLE COST FOR 1KM OF LIGHTING	R	

Tenderers to note: Life cycle costs declared on FORM E6 would be considered as part of the tender evaluation and considered when making final recommendation for contract award.

This clause shall be applied as objective criteria in terms of section 2(1)(f) of the Preferential Procurement Policy Framework Act, 2000 and as compelling and justifiable reasons in terms of Conditions of Tender clause 5.11

SIGNATURE OF TENDERER:

FORM E7: ELECTRICAL SCHEDULE OF MATERIALS

CONTRACT SANRAL R.033-130-2019/3
FOR THE UPGRADING OF NATIONAL ROAD R33 SECTION 13 IN VAALWATER TOWN (KM 60.8 TO
KM 63.0)

Note to Tenderer:

The schedules must only be completed insofar as the equipment and materials required for this particular contract are concerned.

If these schedules are not properly completed by the Tenderer, his tender document will be regarded as incomplete.

Where types, etc. are filled in below and these do not comply with the Specification, this must be specifically pointed out by the Tenderer. Filling in of types, etc. below does not, if they do not comply, signify that they are acceptable or will be accepted. Any changes to the poles, LED luminaires and/or cables must be approved in writing by SANRAL before making any changes.

1. CABLES, CONDUCTORS AND ACCESSORIES

EQUIPMENT AND MATERIAL	DESCRIPTION AND MAKE
PVC SWA PVC LV Cable	
PVC SWA PVC LV Cable glands	

2. MINI SUBS, DISTRIBUTION KIOSKS AND EQUIPMENT

EQUIPMENT AND MATERIAL	DESCRIPTION AND MAKE
LV Distribution Kiosk (Anti-Vandal with Electronic Security)	
Moulded Case Circuit Breakers (MCCB):	
Small frame	
Large frame	
Photo-electric switch	
Manual bypass switch	
Contactors	
Security sensors	

LMS System	
Electronic Security System	

3. LED LUMINAIRES

TYPE	SUPPLIER AND LUMINAIRE INFORMATION
L1	
L2	
L3	
L4	
L5	

SIGNED BY TENDERER:.....

FORM F1: SCHEDULE OF TENDER COMPLIANCE

CONTRACT SANRAL R.033-130-2019/3
FOR THE UPGRADING OF NATIONAL ROAD R33 SECTION 13 IN VAALWATER TOWN (KM 60.8 TO KM 63.0)

Note to tenderer:

This form has been created as an aid to ensure a tenderer's compliance with the completion of the returnable forms and schedules and subsequent uploading into the correct folder.

FORM NO / SBD NO	FORM DESCRIPTION	TICK IF COMPLETED
A1	CERTIFICATE CONFIRMING THAT THE TENDERER READ THE PRESENTATION BRIEFING	
A1.1	CERTIFICATE OF INTENTION TO SUBMIT A TENDER	
A2.1	CERTIFICATE OF AUTHORITY FOR SIGNATORY	
A2.2	DECLARATION OF TENDERER'S CURRENT STATUS OF ANY DEBT OUTSTANDING TO SANRAL	
A2.3	CERTIFICATE OF SINGLE TENDER SUBMISSION	
A2.4	CERTIFICATE OF FRONTING PRACTICES	
A2.5	DECLARATION OF DOMESTIC PROMINENT INFLUENTIAL PERSONS, FOREIGN PROMINENT PUBLIC OFFICIALS OR FOREIGN INFLUENTIAL NATIONALS (DPIPs, FPPOs OR FINs)	
A2.6	CERTIFICATE OF PERMISSION TO CONDUCT DUE DILIGENCE INVESTIGATION	
A3.1 / SBD4	BIDDER'S DISCLOSURE	
A3.2 / SBD9	CERTIFICATE OF INDEPENDENT TENDER – REPEALED & NOT APPLICABLE	REPEALED
A3.3 / SBD8	DECLARATION OF TENDERER'S PAST SUPPLY CHAIN MANAGEMENT PRACTICES – REPEALED & NOT APPLICABLE	REPEALED
A3.4	REGISTRATION ON NATIONAL TREASURY CENTRAL SUPPLIER DATABASE	
A3.5	DECLARATION CERTIFICATE FOR LOCAL PRODUCTION AND CONTENT FOR DESIGNATED SECTORS	
A3.6	LOCAL CONTENT DECLARATION: SUMMARY SCHEDULE	
A4	SCHEDULE OF DEVIATIONS OR QUALIFICATIONS BY TENDERER	
A5	SCHEDULE OF ADDENDA TO TENDER DOCUMENTS	
A6 / SBD2	CERTIFICATE OF TAX COMPLIANCE	
A7	CERTIFICATE OF INSURANCE COVER	
A8	TENDERER'S REGISTERED FINANCIAL SERVICE PROVIDER LETTER AND BANK DETAILS	
A9.1	SCHEDULE OF TENDER'S LITIGATION HISTORY	
A9.2	ENVIRONMENTAL, SOCIAL, HEALTH, AND SAFETY PERFORMANCE DECLARATION	
A10	SCHEDULE OF CURRENT COMMITMENTS	
A11	CERTIFICATE OF COMPLIANCE WITH COMPENSATION FOR OCCUPATIONAL INJURIES AND DISEASES ACT, 1993 (ACT NO. 130 OF 1993)	
A12	CERTIFICATE OF REGISTRATION WITH CIDB	
A13	FORM SBD1 – INVITATION TO BID AND TERMS AND CONDITIONS FOR BIDDING	
B1	CONTRACTORS ESTABLISHMENT ON SITE	

B2	SCHEDULE OF SPECIAL MATERIALS	
C1.1	TENDERER'S B-BBEE VERIFICATION CERTIFICATE	
C1.2 / SBD6.1	PREFERENCE POINTS CLAIM FORM IN TERMS OF THE PREFERENTIAL PROCUREMENT REGULATIONS 2017	
D1	SCHEDULE OF TENDERER'S PLANT AND EQUIPMENT	
D2	TENDERER'S METHOD STATEMENT	
D3	TENDERER'S ORGANISATION AND STAFFING	
D4.1	TENDERER'S KEY PERSONNEL EXPERIENCE (Contracts Director)	
D4.2	TENDERER'S KEY PERSONNEL EXPERIENCE (Contracts Manager)	
D4.3	TENDERER'S KEY PERSONNEL EXPERIENCE (Construction manager (Contractor's Representative))	
D5.1	TENDERER'S EXPERIENCE BASED ON COMPLETED PROJECTS	
D5.2	TENDERER'S EXPERIENCE BASED ON PROJECTS IN PROGRESS	
D6	TENDERER'S INDICATIVE PROGRAMME	
D7	SCHEDULE OF ESTIMATED MONTHLY EXPENDITURE	
D8	SCHEDULE OF SUBCONTRACTORS	
D9	CORPORATE SOCIAL INVESTMENT	
E1	QUALITY ASSURANCE: UTFC:	N/A
E2	PERFORMANCE REPORT: UTFC:	N/A
E3	CONSTRAINTS FOR UTFC PRODUCTS AND PROCESSES:	N/A
E4	WIRE ROPE INFORMATION:	N/A
E5	PHOTOMETRIC FILES	
E6	LAMP LIFESPAN	
E7	ELECTRICAL SCHEDULE OF MATERIALS	
C1.1.1 / SBD7	FORM OF OFFER	
C1.2.3	CONTRACT DATA – INFORMATION PROVIDED BY THE TENDERER	
C2.2 / SBD3	PRICING SCHEDULE	
C.2.3	SUMMARY OF PRICING SCHEDULE	

SIGNED BY TENDERER: