

ANNEXURE A: SPECIFICATIONS AND CATALOGUE

Item #1

JACKET UTILITY, MENS
 TYPE: WORKWEAR
 JACKET MATERIAL: COTTON DRILL
 COLOR: ORANGE
 FEATURES: TRANSNET LOGO
 SPECIFICATION: CSS 286.21 G26/LATEST SANS 434: LATEST
 WITH REFLECTIVE STRIPS
 REFERENCE NO: **35170460**

Size	TFR Item number	RNC Item number
77	35170472	20001210
82	35170484	20001211
87	35170496	20001212
92	35170500	20001213
97	35170512	20001214
102	35170524	20001215
107	35170536	20001216
112	35170548	20001217
117	35170561	20001218
122	35170573	20001219
127	35170585	20001220
132	35170597	20001221
137	35170601	20001222
142	35170613	20001223
147	35170625	20001224
152	35170637	20001225
157	35170649	20001226
SPECIAL	35170650	20001210



Item # 2

TROUSERS UTILITY
 TYPE: WORKWEAR
 GENDER: MAN
 COLOR: ORANGE.
 FIBER MATERIAL: COTTON DRILL
 CLOTH NAME: D59
 CLOSING METHOD: SLIDE FASTENER
 TROUSERS POCKET QUANTITY: TWO SIDE, ONE HIP, ONE RULE
 FEATURES: WITH REFLECTIVE STRIP
 SPECIFICATION: CSS 286.21 G27 / LATEST, SANS 434: LATEST
 PACKAGE TYPE: PLASTIC ENVELOPE
 REFERENCE NO: **35170662**



Size	TFR Item no.	RNC Item no.	Size	TFR Item number	RNC Item no.
67	35170674	20001227	112	35170775	20001236
72	35170686	20001228	117	35170787	20001237
77	35170698	20001229	122	35170799	20001238
82	35170702	20001230	127	35170803	20001239
87	35170714	20001231	132	35170815	20001240
92	35170726	20001232	137	35170827	20001241
97	35170738	20001233	142	35170839	20001242
102	35170751	20001234	147	35170840	20001243
107	35170763	20001235	SPES.	35170852	

Item # 3

SHORTS, UNISEX
 TYPE WORKWEAR
 STYLE BURMUDA
 MATERIAL COTTON DRILL
 COLOR ORANGE
 CLOTH NAME D59
 POCKET TYPE TWO SIDE, ONE HIP
 CLOSING METHOD SLIDE FASTENER
 POCKET QUANTITY THREE
 PACKAGE TYPE PLASTIC ENVELOPE
 SPECIAL FEATURES WITH REFLECTIVE STRIP AND TRANSNET LOGO
 SPECIFICATION: CSS 286.21 G27/ LATEST
 REFERENCE NO: 35162235

Size	Item number	Size	Item number
67	35162247	112	35162336
72	35162259	117	35162348
77	35162260	122	35162361
82	35162272	127	35162373
87	35162284	132	35162385
92	35162296	137	35162397
97	35162300	142	35162401
102	35162312	147	35162413
107	35162324	SPECIAL	35162425



Item # 13

SHIRT UTILITY
 TYPE: GOLF
 GENDER: MALE
 COLOR: NAVY
 GARMENT SLEEVE LENGTH: SHORT
 FIBER MATERIAL: POLYESTER/COTTON
 GARMENT COLLAR TYPE: 3 KNITTED WHITE STRIPE MM
 COLLAR MATERIAL: KNITTED
 FEATURES: TRANSNET LOGO ON POCKET
 SPECIFICATION: CSS 286.21 G 154/LATEST
 STRIPE 5MM FROM EDGE
 REFERENCE NUMBER 35158259

Size (CHEST)	Item number
72-77 (XS)	35158260
82-87 (S)	35158272
92-97 (M)	35158284
102-107 (L)	35158296
112-117 (XL)	35158300
122-127 (2XL)	35158312
132-137 (3XL)	35158324
142-147 (4XL)	35158336
152-157 (5XL)	35158348
162-167 (6XL)	35158361
SPECIAL	35158373



Item # 14

SHIRT UTILITY
 TYPE: GOLF
 GENDER: FEMALE
 COLOR: NAVY
 GARMENT SLEEVE LENGTH: SHORT
 FIBER MATERIAL: POLYESTER/COTTON
 GARMENT COLLAR TYPE: 3 KNITTED WHITE STRIPE MM
 COLLAR MATERIAL: KNITTED
 FEATURES: TRANSNET LOGO ON POCKET
 SPECIFICATION: CSS 286.21 G 154/LATEST
 STRIPE 5MM FROM EDGE
 REFERENCE NUMBER: 35158385

Size (BUST)	Item number
72-77 (XS)	35158397
82-87 (S)	35158401
92-97 (M)	35158413
102-107 (L)	35158425
112-117 (XL)	35158437
122-127 (2XL)	35158449
132-137 (3XL)	35158450
142-147 (4XL)	35158462
152-157 (5XL)	35158474
162-157 (6XL)	35158486
SPECIAL	35158498



Item # 15

JACKET, UTILITY
 GENDER: UNISEX
 TYPE DETACHABLE
 MATERIAL POLYESTER / VISCOSE RPR 66
 FINISH REFLECTIVE TAPE
 GARMENT STYLE: WINDBREAKER
 COLOR NAVY
 FEATURES DETACHABLE WARM LINING, ELASTICATED WAIST BACK SECTION, CELL PHONE POCKET, DOUBLE POCKET ON THE DETACHABLE WORM LINER, AND ONE INSIDE POCKET, TRANSNET LOGO
 PACKAGE TYPE PLASTIC ENVELOPE
 SPECIFICATION: CSS 286.21 G9/LATEST
 REFERENCE NO: 35091588

Size	Item No.	Size	Item No.
77	35091602	127	35091690
82	35091603	132	35091705
87	35091604	137	35091706
92	35091616	142	35091707
97	35091628	147	35091708
102	35091641	152	35091709
107	35091653	157	35091710
112	35091665	162	35091711
117	35091677	SPECIAL	35091712
122	35091689		



Item # 16

SWEATER
 TYPE: JERSEY
 GENDER: UNISEX
 MATERIAL: WOOL/ACRYLIC
 COLOR: NAVY
 FEATURES: TRANSNET LOGO
 STYLE: V NECK
 SPECIFICATION: CSS286.21 G20
 REFERENCE NO: 35159164,

Size	Item number
82-87 (S)	35159176
92-97 (M)	35159188
102-107 (L)	35159204
112-117 (XL)	35159216
122-127 (2XL)	35159228
132-137 (3XL)	35159241
142-147 (4XL)	35159253
152-157 (5XL)	35159265
162-167 (6XL)	35159277
(SPECIAL)	35159289



Item # 17

COAT ALL WTHR
 COAT ALL WEATHER
 TYPE: UNISEX
 MATERIAL: POLYESTER / VISCOSE
 COLOR: NAVY
 TRANSNET LOGO, DUAL PURPOSE, REFERENCE NO: 35/84220,
 SPECIFICATIONS: CSS 286.21 G7/ LATEST
 REFERENCE NUMBER: 3584220

Size	Item number	Size	Item number
72	35084229	122	35084321
77	35084230	127	35084333
82	35084231	132	35084345
87	35084232	137	35084346
92	35084244	142	35084347
97	35084256	147	35084348
102	35084268	152	35084349
107	35084281	157	35084350
112	35084293	162	35084351
117	35084308	(SPECIAL)	035084357



Item # 19

SMOCK GENRAL PURPOSE
 TYPE: UNISEX, DUST COAT
 MATERIAL: COTTON
 COLOR: ORANGE
 TRANSNET LOGO, REFLECTIVE STRIPS
 SPECIFICATION NO: CSS 286.21 G30 / LATEST
 REFERENCE NUMBER: 3596239

Size	Item number
87	35096240
92	35096252
97	35096264
102	35096276
107	35096288
112	35096304
117	35096316
122	35096328
127	35096341
132	35096353
137	35096354
142	35096355
SPECIAL	35096365



Item # 24

CAP, COLD WEATHER
 NAVY ACRYLIC
 SPECIFICATION NUMBER: CSS 286.21 G23/LATEST

Size	Item number
ONE SIZE FIT ALL	35098340



Item # 25

COAT ALL WEATHER
 TYPE: UNISEX
 MATERIAL: POLYESTER / VISCOSE
 COLOR: **BLACK**
 TRANSNET LOGO & TRAIN CREW LOGO
 SPECIFICATIONS: CSS 286.21 G7/ LATEST
 REFERENCE NUMBER: 35162437



SIZE	ITEM NO.	SIZE	ITEM NO.
77	35162449	127	35162551
82	35162450	132	35162563
87	35162462	137	35162575
92	35162474	142	35162587
97	35162486	147	35162599
102	35162498	152	35162603
107	35162502	157	35162615
112	35162514	162	35162627
117	35162526	SPECIAL	35162689
122	35162538		

Item # 26

JACKET, UTILITY
 TYPE: PARKA
 GENDER UNISEX
 COLOR BLACK & OLIVE GREEN
 JACKET MATERIAL POLYESTER/VISCOSE
 FEATURES TRANSNET LOGO & TRAIN CREW
 PACKAGE TYPE PLASTIC ENVELOPE
 SPECIFICATION: CSS 286.21 G156/LATEST
 REFERENCE NO: 35162640

Size (CHEST)	Item number
62-67(XXS)	35162652
72-77 (XS)	35162664
82-87 (S)	35162676
92-97 (M)	35162688
102-107 (L)	35162704
112-117 (XL)	35162716
122-127 (2XL)	35162728
132-137 (3XL)	35162741
142-147 (4XL)	35162753
152-157 (5XL)	35162765
162-167 (6XL)	35162777
SPECIAL	35162785



Item # 31

SWEATER
 TYPE JERSEY
 STYLE V NECK
 COLOR BLACK
 MATERIAL WOOL/ACRYLIC
 FEATURES TRANSNET LOGO
 GENDER UNISEX
 PACKAGE TYPE PLASTIC ENVELOPE
 82-87 CM, WITH SHOULDER STRAPS, TRAIN CREW ON LEFT HAND SIDE
 SPECIFICATION: CSS 286.21 G20 / LATEST
 REFERENCE NO: 35163455

Size (CHEST)	Item number
82-87 (S)	35163467
92-97 (M)	35163479
102-107 (L)	35163480
112-117 (XL)	35163492
122-127 (2XL)	35163507
132-137 (3XL)	35163519
142-147 (4XL)	35163520
152-157 (5XL)	35163532
162-167 (6XL)	35163544
(SPECIAL)	35163556



Item # 34

CAP, COLD WEATHER
 TYPE KNITTED
 SIZE: ONE SIZE FITS ALL
 MATERIAL ACRYLIC
 COLOUR - BLACK, TRANSNET LOGO IN OLIVE GREEN
 SPECIFICATION: CSS 286.21 G23/LATEST

SIZE	ITEM NO.
ONE SIZE FITS ALL	35163860



Item # 46

JACKET, UTILITY
TYPE WINDBREAKER
GENDER UNISEX
COLOR NAVY
JACKET MATERIAL POLYESTER/VISCOSE
FEATURES TRANSNET FREIGHT RAIL, HAZMAT LOGO
PACKAGE TYPE PLASTIC ENVELOPE
132-137CM
SPECIFICATION: CSS 286.21 G62 / LATEST
REFERENCE NO: 35161824

Size (CHEST)	Item number
62-67(XXS)	35161836
72-77 (XS)	35161848
82-87 (S)	35161861
92-97 (M)	35161873
102-107 (L)	35161885
112-117 (XL)	35161897
122-127 (2XL)	35161901
132-137 (3XL)	35161913
142-147 (4XL)	35161925
152-157 (5XL)	35161937
162-167 (6XL)	35161949
SPECIAL	35161950



Item # 47

SWEATER
TYPE JERSEY
STYLE V NECK
COLOR NAVY
MATERIAL WOOL/ACRYLIC
FEATURES TRANSNET FREIGHT RAIL AND HAZMAT LOGO
GENDER UNISEX
PACKAGE TYPE PLASTIC ENVELOPE
112-117CM, WITH SHOULDER STRAPS
SPECIFICATION: CSS 286.21 G20/LATEST
REFERENCE NO: 35161190

Size (CHEST)	Item number
82-87 (S)	35161205
92-97 (M)	35161217
102-107 (L)	35161229
112-117 (XL)	35161230
122-127 (2XL)	35161242
132-137 (3XL)	35161254
142-147 (4XL)	35161266
152-157 (5XL)	35161278
162-167 (6XL)	35161291
(SPECIAL)	35161306



Item # 49

SHIRT, UTILITY
 TYPE GOLF
 GENDER UNISEX
 COLOR NAVY
 GARMENT SLEEVE LENGTH SHORT SLEEVE
 FIBER MATERIAL COTTON/POLYESTER
 GARMENT COLLAR TYPE 3 KNITTED WHITE STRIPE MM
 COLLAR MATERIAL KNITTED
 CLOSING METHOD BUTTON
 FEATURES TRANSNET FREIGHT RAIL LOGO ON POCKET, HAZMAT LOGO ON LEFT SIDE
 SPECIFICATION CSS 286.21 G 154 / LATEST
 PACKAGE TYPE PLASTIC BAG
 REFERENCE NUMBER **35161318**

Size (CHEST)	Item number
72-77 (XS)	35161331
82-87 (S)	35161343
92-97 (M)	35161355
102-107 (L)	35161367
112-117 (XL)	35161379
122-127 (2XL)	35161380
132-137 (3XL)	35161392
142-147 (4XL)	35161407
152-157 (5XL)	35161419
162-167 (6XL)	35161420
SPECIAL	35161432

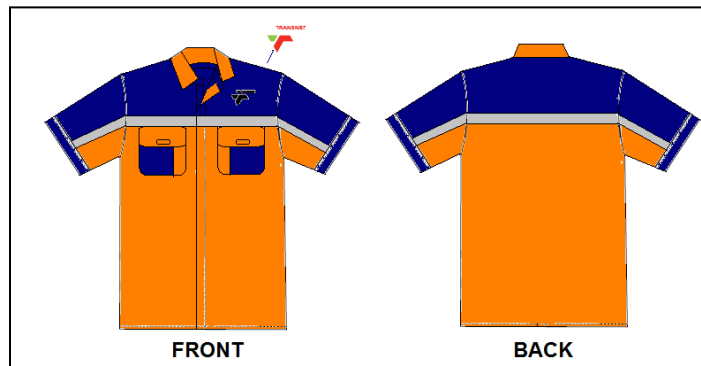


Item # 52 (RNC)

SHIRT, UTILITY
 TYPE: SUPERVISOR
 GENDER: UNISEX
 COLOR: NAVY BLUE AND ORANGE
 GARMENT STYLE: PIT
 GARMENT SLEEVE LENGTH: SHORT,
 FIBER MATERIAL: COTTON 65/POLYESTER 35 PCT,
 GARMENT COLLAR TYPE: CLOSED NECK,
 CLOSURE METHOD: BUTTONS,
 SPECIAL FEATURES: TRANSNET LOGO, REFLECTIVE STRIPS
 SPECIFICATION: CSS 286.21 G200, LA

Note: Illustrations are not to scale and are for guidance only

Size (CHEST)	Item number
82-87 (S)	20000760
92-97 (M)	20000761
102-107 (L)	20000762
112-117 (XL)	20000763
122-127 (2XL)	20000764
132-137 (3XL)	20000765
142-147 (4XL)	20000766
152-157 (5XL)	20000767
162-167 (6XL)	20000768
172-177 (7XL)	20000769



Item # 53 (RNC)

T-SHIRT, MEN'S
TYPE: CREW NECK,
MATERIAL: COTTON 100 PCT
COLOR: ORANGE; 155 GRAM
SPECIFICATION: CSS 286.21 G201

Note: Illustrations are not to scale and are for guidance only

Size	Item number
SMALL	20000541
MEDIUM	20000569
LARGE	20000570
2X-LARGE	20000571
3X-LARGE	20000572
X-LARGE	20000573

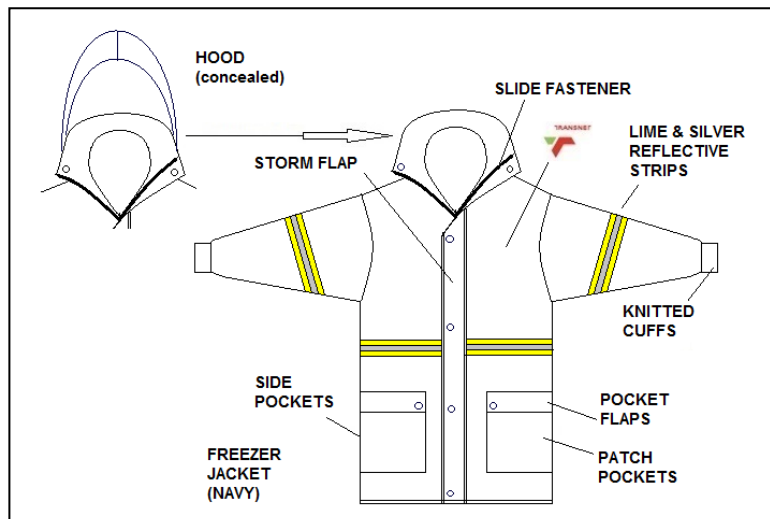


Item # 54 (RNC)

JACKET, COLD WEATHER
TYPE: FREEZER,
JACKET MATERIAL: OXFORD NYLON
COLOR: NAVY BLUE,
SPECIAL FEATURES: TRANSNET LOGO, REFLECTIVE STRIPS
FURNISHED ITEMS: SLIDE FASTENER
SPECIFICATION: CSS 286.21 G202

Note: Illustrations are not to scale and are for guidance only

Size	Item number
M	20000770
L	20000771
XL	20000772
2XL	20000773
3XL	20000774
4XL	20000952

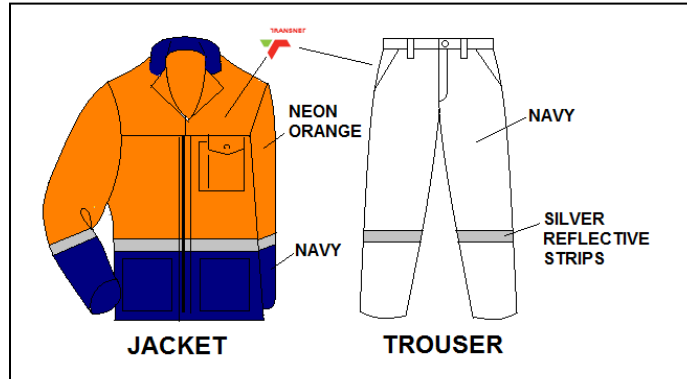


Item # 56 (RNC)

OVERALL, UTILITY
TYPE: CONTINENTAL SUIT,
GENDER: UNISEX,
MATERIAL: COTTON 65/POLYESTER 35 PCT, DESIGN
TYPE: 2 PIECE
COLOR: BLUE AND ORANGE
CLOSURE METHOD: SLIDE FASTENER
SPECIAL FEATURES: TRANSNET LOGO, REFLECTIVE STRIPS
SPECIFICATION: CSS286.21 G204

Note: Illustrations are not to scale and are for guidance only

Size	Item number
82	20000600
87	20000601
92	20000602
97	20000603
102	20000604
107	20000605
112	20000606
117	20000607
122	20000608
127	20000609
132	20000610



Conti suit size combination (SANS 434)

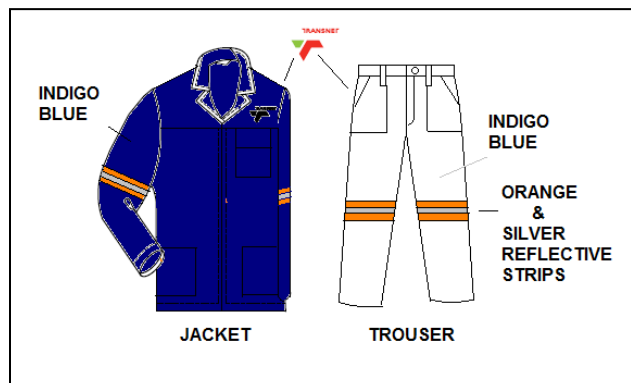
Jacket	82	87	92	97	102	107	112	117	122	127	132
Trouser	72	77	82	87	92	97	102	107	112	117	122

Item # 57 (RNC)

OVERALL, UTILITY
TYPE: CONTINENTAL SUIT
GENDER: UNISEX
MATERIAL: DENIM COTTON 100%, TYPE DEN 41 (340 G/M2 OF SANS 1387 PART VI)
DESIGN TYPE: 2 PIECE
COLOR: INDIGO BLUE
CLOSURE METHOD: SLIDE FASTENER
SPECIAL FEATURES: TRANSNET LOGO, REFLECTIVE STRIPS
SPECIFICATION: CSS286.21 G205.

Note: Illustrations are not to scale and are for guidance only

Size	Item number
82	20000676
87	20000677
92	20000678
97	20000679
102	20000680
107	20000681
112	20000682
117	20000683
122	20000684
127	20000685
132	20000686



Conti suit size combination (SANS 434)

Jacket	82	87	92	97	102	107	112	117	122	127	132
Trouser	72	77	82	87	92	97	102	107	112	117	122

TRANSNET SPECIFICATION**SPECIFICATION: CSS 286.21 G26****ISSUED: APRIL 1990****REVISED: OCTOBER 2015****JACKET, WORKWEAR, UNISEX.**

Reference item No. 35/170460 "Orange" Transnet Logo (Registered colour No. 232c "Transnet Orange" of CKS 129)

No. 35/180003 "Orange" Transnet Logo (Registered colour No. 232c "Transnet Orange" of CKS 129)

(Reference no 35/1800003 is a PPE item procured as non-stock) it has been incorporated into this specification and serves as a guidance for the requirements (Cloth, reflective strips, colour, logo, sizing SANS 434)

1. REQUIREMENTS:**1.1 MATERIAL:**

- 1.1.1 The outer material ref. no. 35/170662 shall be all cotton drill fabric that complies with the requirements for type D59 of SANS 1387 – 4 and shall be of a colour that is an acceptable match to colour No. 232c "Transnet Orange" of CKS 129
- 1.1.2 The outer material ref. no 35/180003 shall be all cotton drill fabric that complies with the requirements for type D59 **Fire treated Acid resistant** (SANS 1432 Part 1) and shall be of a colour that is an acceptable match to colour No. 232c "Transnet Orange" of CKS 129
- 1.1.3 Copy of cloth compliance certificate to accompany all tender documents.

1.2 GARMENT:

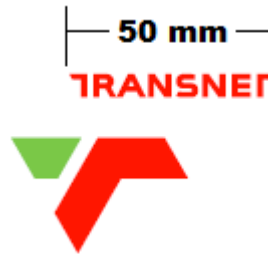
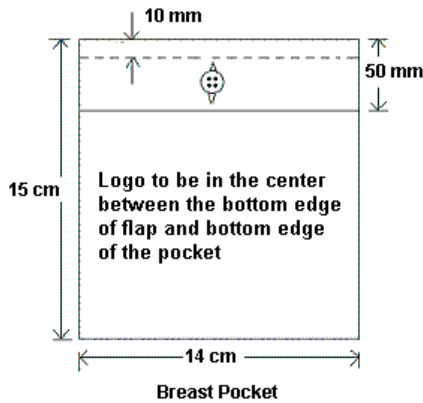
The jacket shall comply with the requirements (other than Packing and Marking and Labeling of Garments) to SABS 434/Latest.

- (a) Style C for front- (S) Slide fastener without butted front. One breast pocket and two side pockets with blunted or square corners.
- (b) Style 1 – Back with yoke, back pleats, and adjustment tabs, except side vents are not required. Back yoke depth must be 18 cm at the centre back.
- (c) Style p- plain cuff.
- (d) Patch pocket to be square
- (e) Adjustment tabs to be square and fasten with button, size 105 mm x 55 mm.
- (f) Breast pocket flap to be square with button and buttonhole fastener.
- (f) Breast pocket size to be 14 cm x 15 cm and 10 mm from yoke seam.
- (g) Side pocket size to be 16 cm x 18 cm and positioned 30 mm from hem
- (h) Reflective strips shall comply with requirements other than positing and colour to:
SANS 50471: 2006 / EN 471: CLASS 2 Industrial wash, minimum 50 washes at 75°C
(Copy of manufacturer's compliance certificate to accompany the tender documents)
* Strips to be silver (20 mm) on lime (50 mm)
(Silver strip must be clearly marked on the front or back with the manufacturer's identification)
 - a) One reflective strip on waist circumference line (same height as the arm strip), one across the shoulder from back to front, with four rows of stitching.
 - b) Sleeve strips to be ± 17 cm from underarm with four rows of stitching
 - c) Colour to be silver (17mm) on lime (50 mm)
- i) The reflective strips for ref. 35/180003 to be fire retardant.

1.3 LOGO, SAFETY AWARENESS & FIRE RETARDANT /ZERO FLAME AWARENESS LOGO:**1.3.1 Logo on pocket.**

"Orange" Ref. no. 35/170460 Transnet logo silk-screened in white*

"Navy" Ref. no. 35/180003 Transnet logo embroidered in the Transnet colours.



1.3.2 Safety awareness

Ref no 35/170460 (ONLY) The words "Safety starts with me" proportionately sized, printed on the center back, between the two reflective strips. The wording to be one size for all sizes.

*White close colour match No. 1c/2 of CKS 129.

1.3.3 Fire Retardant awareness logo (only for ref. no 35/180003)

The manufacturers "Fire Acid Retardant / Zero Flame Acid Awareness" logo to be depicted on the right hand (when worn) sleeve (top).



(All artwork to be confirmed with the Quality Assurance Department)

1.4 SCREENPRINTING:

Colour fastness to washing of screen printing. The numerical ratings for change in colour and staining of transfer cloths, determined in accordance with the relevant SABS method, shall not be less than 4.

1.5 LABELING:

The garment shall be labeled and marked in accordance with the requirements of specification CSS 286.21 LAB/1. Other than above the label for ref. no. 35 180003 must comply with the fire-retardant requirements. Note that both Transnet Freight rail and RME item numbers must be depicted on the label.

1.6 PACKING:

The garments shall be packed and marked in accordance with requirements of specification CSS 286.21 PAC/1.

Annex A
(normative)

Special conditions of tender

A-1 Unless otherwise stated, Transnet Limited (or an officer or organization deputed by it), shall be the inspecting authority.

A-2 Sample submission will be according to the RFP/ RFQ requirements

A-3 The jackets shall be subject to inspection during manufacture. The inspector shall, during normal working hours, be given all reasonable facilities for carrying out his duties and shall have the right of entry into the contractor's factory and the factory or works of any subcontractor where work on jackets supplied to this specification may be in progress.

A-4 The contractor shall inspect the finished jackets for compliance with the specification before submitting them to the inspecting authority for final inspection.

A-5 Before acceptance, the jackets shall have been inspected and tested by the inspecting authority and found to comply with the requirements of the specification.

HISTORY SHEET			
REV/NO	DATE	AMENDMENT / HISTORY	REVISED BY
1	March 2004	REVISION	C. DU PLOOY
2	April 2005	REVISION	C. DU PLOOY
3	November 2005	REVISION	C. DU PLOOY
4	July 2008	REVISION	C. DU PLOOY
5	November 2010	REVISION	C. DU PLOOY
6	May 2013	REVISION	C. DU PLOOY
7	November 2014	REVISION	C. DU PLOOY
8	October 2015	REVISION	C. DU PLOOY

TRANSNET SPECIFICATION**SPECIFICATION: CSS 286.21 G27****ISSUED: APRIL 1990****REVISED: OCTOBER 2016****TROUSERS WORKWEAR, UNISEX**

Reference item No. 35/170662 "Orange" (Registered colour No. 232c "Transnet Orange" of CKS 129)
 No. 35/162235 (Shorts) Orange (Registered colour No. 232c "Transnet Orange" of CKS 129)
 No. 35/180003 "Orange" Transnet Logo (Registered colour No. 232c "Transnet Orange" of CKS 129)
 (Reference no 35/180217 is a PPE item procured as non-stock) it has been incorporated into this specification serves as a guidance for the requirements of (Cloth, reflective strips, colour, logo, sizing SANS 434)

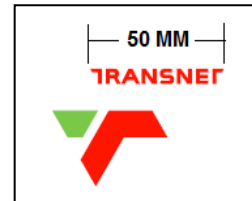
1. REQUIREMENTS:**1.1 MATERIAL:**

- 1.1.1 The outer material ref. no. 35/170662 shall be all cotton drill fabric that complies with the requirements for type D59 of SANS 1387 – 4 and shall be of a colour that is an acceptable match to colour No. 232c "Transnet Orange" of CKS 129
- 1.1.2 The outer material shall be all cotton drill fabric that complies with the requirements for type D59 Fire treated Acid resistant (SANS 1432 Part 1) and shall be of a colour that is an acceptable match to colour No. 232c "Transnet Orange" of CKS 129"
- 1.1.3 Copy of cloth compliance certificate to accompany tender documents.

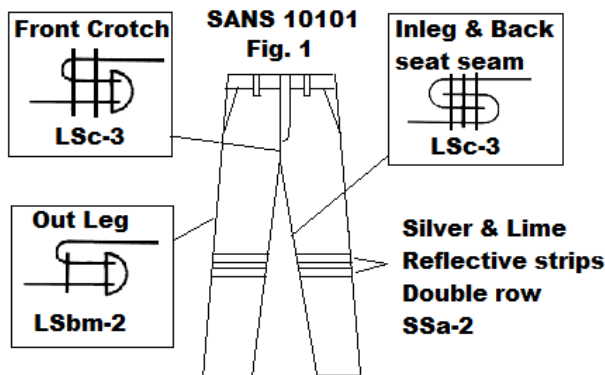
1.2 GARMENT:

The trousers shall comply with the requirements (other than Packing and Marking, & Labeling of Garments) to SANS 434/Latest.

- (a) The hip pocket shall be of width 15 cm and depth 16 cm
- (b) Belt loop length of 55mm
- (c) Slide fastener front closure.
- (d) The top end of the pocket to be 30 mm forward of the side seam
- (e) Seams according to SANS 434 and main seams according to Fig 1.
- (f) Logo, to be in the center of the back pocket



- (g) Reflective strips shall comply with requirements other than positing and colour to:
 SANS 50471: 2006 / EN 471 CLASS 2 Industrial wash, minimum 50 washes at 75 °C
 (Copy of manufacturer's compliance certificate to accompany the tender documents)
 * Strips to be silver (20 mm) on lime (50 mm)
 (Silver strip must be clearly marked on the front or back with the manufacturer's identification)
 * One strip on each leg positioned proportionally below knee, stitched with four rows of stitching
- (h) For ref. no.35/180003 The reflective strips to be fire retardant
- (i) For ref. no. 35/180217The Fire acid retardant / zero flame acid awareness logo to be depicted on the thigh of the trouser.



1.3 LABELING:

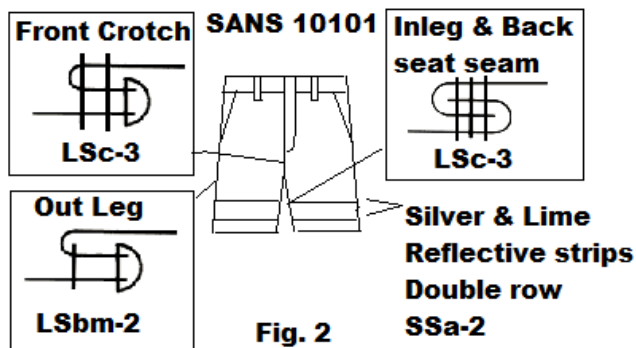
The garment shall be labeled and marked in accordance with the requirements of specification CSS 286.21 LAB/1. In addition to the requirements of the labeling specification the trousers left front to be folded for the sewn-in label to be visible when in the plastic envelope.

Other than above the label for ref. no. 35 180003 must comply too the fire-retardant requirements.

Note that both Transnet Freight rail and RME item numbers must be depicted on the label.

1.4 PACKING:

The garments shall be packed and marked in accordance with requirements of specification CSS 286.21 PAC/1.



Shorts size chart

1	2	3	4	5	6	7
Size	Nominal measurements of finished garment (cm)					
Designation 1)	Out leg	In leg	Waist extend	Seat	Knee	Bottom
67	52	25	80	92	51	42
72	52	25	85	97	52	44
77	53	26	90	102	53	46
82	53	26	95	107	54	48
87	55	27	100	112	55	50
92	57	28	105	117	56	50
97	59	29	110	122	57	50
102	61	30	115	127	58	50
107	62	31	120	132	58.5	51
112	63	32	125	137	59	51
117	64	33	130	142	59.5	51
122	64	33	135	147	60	51
127	65	34	140	152	60.5	52
132	65	34	145	157	61	52
137	66	36	150	162	61.5	52
142	66	36	155	167	62	52
147	67	37	160	172	62.5	52

1) Based on the waist girth, in centimetres, of the intended wearer

Annex A
(normative)

Special conditions of tender

A-1 Unless otherwise stated, Transnet Limited (or an officer or organization deputed by it), shall be the inspecting authority.

A-2 Sample submission will be according to the RFP/ RFQ requirements.

A-3 The trousers shall be subject to inspection during manufacture. The inspector shall, during normal working hours, be given all reasonable facilities for carrying out his duties and shall have the right of entry into the contractor's factory and the factory or works of any subcontractor where work on trousers supplied to this specification may be in progress.

A-4 The contractor shall inspect the finished trousers for compliance with the specification before submitting them to the inspecting authority for final inspection.

A-5 Before acceptance, the trousers shall have been inspected and tested by the inspecting authority and found to comply with the requirements of the specification.

HISTORY SHEET			
REV/NO	DATE	AMENDMENT / HISTORY	REVISED BY
1	September 2006	REVISION	C. DU PLOOY
2	July 2008	REVISION	C. DU PLOOY
3	March 2009	REVISION	C. DU PLOOY
4	November 2010	REVISION	C. DU PLOOY
5	May 2013	REVISION	C. DU PLOOY
6	October 2014	REVISION	C. DU PLOOY
7	November 2014	REVISION	C. DU PLOOY
8	October 2015	REVISION	C. DU PLOOY

Windbreakers, Unisex

Reference no. 35091588

1 Scope

This specification covers the material, and make of windbreakers, for use by male and female personnel employed by Transnet Limited.

Reference Item No. 35/91588 Transnet

NOTES

1 The following requirements will be specified in tender invitations and in each order or contract:

- a) The item(s) required {see 1}
- b) The size(s) required {see 4.4}
- c) The packing, if other than as specified (see 5.1)
- d) Additional marking, if required (see 5.4)

2 Special conditions of tender (which cover the conditions of acceptance of the windbreakers) are given in annex A.

2 Normative references

The following standards contain provisions which, through reference in this text, constitute provisions of this specification. All standards are subject to revision and, since any reference to a standard is deemed to be a reference to the latest edition to a standard, parties to agreements based on this specification are encouraged to take steps to ensure the use of the most recent editions of the standards indicated below. Information on currently valid national and international standards may be obtained from the South African Bureau of Standards.

CKS 627, *Fusible interlinings*.

CKS 129, *Colours for Textiles*

CSS 286.21 LAB/1, *Labelling*.

CSS 286.21 PAC/1, *Packaging*.

SANS 79, *Textiles - Mass per unit area of conditioned fabrics*.

SANS 142, *Narrow elastic fabrics, and strip*.

SANS 1309, *Printed labels for textiles*.

SANS 1362, *Sewing threads*.

SANS 1387-2, *Woven cotton, and similar apparel fabrics – Part 2: Polyester-and-cotton workwear fabrics*

SANS 1387-7, *Woven cotton, and similar apparel fabrics – Part 7: Jacket linings*.

SANS 1387-11, *Woven cotton, and similar apparel fabrics – Part 11: Polyester-and-cellulosic raincoat fabrics*.

SANS 1822, *Slide fasteners*.

SANS 1833-1/ISO 1833-1, *Textiles – Quantitative chemical analysis – Part 1: General principles of testing*.

SANS 1833-11/ISO 1833-11, *Textiles – Quantitative chemical analysis – Part 11: Mixtures of cellulose and polyester fibres (method using sulphuric acid)*.

SANS 5278, *Sewing stitches per unit length*.

SANS 50471, *High visibility warning clothing for professional use – test methods and requirements*.

SANS 10011, *Care-labelling of textiles and clothing*.

SANS 10235, *Fibre content labelling of textiles and textile products*.

SANS 10371, *Terms, and definitions for clothing*

3 Definitions

For the purposes of this specification the following definitions shall apply:

3.1 acceptable: Acceptable to Transnet Limited.

3.2 nominal: Subject to the tolerances normal to good manufacturing practice.

4 Requirements

4.1 Materials

The following polyester-and-viscose fabric shall be supplied and used by the manufacturer.

Cloth twill colour: "navy" no 2105 c/1997 of CKS 129 65% polyester and 35% viscose

specifications: SABS 1387 – 11 / Latest / type RPR 66

4.1.1 General

The materials specified in 4.1.2 to 4.1.9 (inclusive), all a colour that is an acceptable match to that of the outer material, shall be supplied and used by the manufacturer.

4.1.2 Lining

A polyester lining that complies with the requirements for type L61P of SANS 1387- 7.

4.1.3 Interlining

An acceptable fusible woven or non-woven interlining that complies with the requirements of CKS 627 for interlinings that are suitable for use in garments that may be dry-cleaned or washed or both.

NOTE - The selection of interlining of appropriate mass per unit area shall be determined by consultation with the suppliers of the interlining.

4.1.4 Wadding

A polyester wadding of nominal mass per unit area 85 g/m².

4.1.5 Slide fasteners

- a) **Front** One-way open end slide fasteners with plastic moulded elements that comply with the requirements of SANS 1822
- b) **Detachable warm liner** One-way open end slide fasteners with spiral elements that comply with the requirements of SANS 1822

4.1.6 Press-studs

Press-studs of an intrinsically corrosion-resistant chromed base metal of the male and female type. The inside diameter of the hole in the female section shall be at least 5 mm.

4.1.7 Binding tape

An acceptable bias binding tape of nominal width 10 mm.

4.1.8 Elastic Webbing

An acceptable woven elastic webbing having a cotton and rubber warp and a cotton weft, a nominal width of 20 mm and a stretch of at least 120%.

4.1.9 Reflective Tape

Reflective strips shall comply with requirements other than positing and colour to:
SANS 50471: 2006 / EN 471: CLASS 2 Industrial wash, minimum 50 washes at 75°C

4.1.10 Threads**4.1.10.1 Sewing thread**

The threads shall comply with the relevant requirements of SABS 1362 and shall be as follows:

- a) **sewing and top-stitching thread:** a polyester and cotton core spun thread, or a staple polyester thread, ticket No. 80 (in both cases)

- b) **sewing and binding of warm lining:** a polyester-and-cotton core-spun thread, or a staple polyester thread, ticket No. 120 (in both cases).

4.1.9.2 Embroidery thread

The embroidery thread shall be as follows: A white 100% viscose machine embroidery thread.

4.2 Workmanship

The windbreakers shall be cut and made with first-class workmanship throughout and shall be free from defects that affect their appearance or can affect their serviceability (or both), and from marks, spots and stains incurred in the making-up. All seams shall be smooth, and all stitching shall be uniform. Seams and stitching shall be free from twists, pleats and puckers and shall be extensible enough to obviate seam cracking and undue shrinkage in use. All ends of sewing that are not secured in seams or in other sewing shall be adequately back tacked. All ends of sewing shall have been trimmed and loose threads removed. The windbreakers shall be of uniform and acceptable make, colour and finish, and the matching of the shades of the component parts of a windbreaker shall be such as to be acceptable.

4.3 Style

The windbreaker shall be single breasted with a storm flap and a slide fastener fastening closure, two welted side pockets, one outer slide fastener cell phone pocket and inner cell phone pocket. The set-in sleeves shall consist of two sections with cuff and tabs. Each forepart shall have two panels. The body and sleeves shall be fully lined, and the jacket shall have a slide fastener detachable warm lining and inter lined with wadding (see 4.1.4). The detachable warm liner shall have an inner double pocket.

4.4 Sizes

The windbreakers shall be supplied in one (or more) of the size designations given in column 1 of table

1, as specified in the order or contract, and their measurements, determined in accordance with SANS 10188, shall conform to the relevant values given in columns 2-8. The patterns shall conform to the specification and to the sealed sample and shall be drafted by the manufacturer.

Table 1 - Size range

1		2	3	4	5	6	7	8
Size designation ¹⁾		Nominal garment measurements, cm						
		Chest	Back length	Back Width	Under arm sleeve	Depth of scye	Sleeve circ. ²⁾	Cuff circ.
Cm	inches							
72	28	94	74	37	43	26	41	27
77	30	99	74	39	43	26.5	42	28
82	32	104	75	41	44	27.5	43	28
87	34	109	75	43	44	28.5	44	29
92	36	114	76	45	44	29.5	45	29
97	37	119	76	47	45	30.5	46	29
102	38	124	77	49	45	31	47	30
107	40	129	77	51	45	32	48	30
112	42	134	78	53	46	33	49	31
117	44	139	78	55	46	34	50	31
122	46	144	78	57	46	35	51	32
127	48	149	78	59	47	35.5	52	32
132	50	154	80	61	47.5	36	54	33
137	52	159	80	61	48	36.5	56	33
142	56	164	81	63	48.5	37	58	34
147	58	169	81	63	49	37.5	60	34
152	60	174	82	65	49.5	38	62	35
157	62	179	82	65	50	38.5	64	35
162	64	184	82	67	51	39	66	36
1) Based on the chest measurement in centimetres of the intended wearer.								
2) Sleeve circumference measured \pm 30 cm from the crown of the sleeve								

4.5 Make

NOTE - Unless inconsistent with the text, all measurements are nominal.

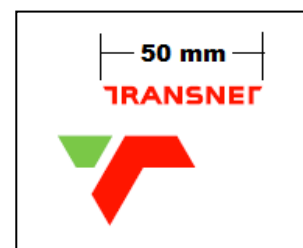
4.5.1 Fronts

Each fore part shall be two sections, slanted pocket, with five equidistantly spaced press-studs in the storm flap and fasten with a slide fastener (see 4.1.5.). Each forepart shall consist of two sections i.e., a yoke that extends from the shoulder seam to 50 mm above the base of the scye, and a lower section beneath it. The front and back yoke shall be top stitched 7 mm from the edge. The 50 mm reflective strip to be positioned below the yoke seam in the front and back.

4.5.2 Logo

On the left forepart shall be the appropriate embroidered

in white an acceptable thread



4.5.3 Pockets**4.5.3.1 Side pockets**

Each forepart shall have a slanted welted side pocket. The welts shall be of folded outer material and interlined with interlining (see 4.1.3). The finished length and width shall be 17,5 cm and 45 mm respectively. The free edge shall be top stitched 7 mm from the edge, the sides 2mm and 7 mm from the edge. Each end of each pocket mouth shall be stayed at the back. The pocket bag shall be of lining (see 4.1.2) and not sewn in with the hem.

4.5.3.2 Inside pocket (right hand side when worn) and detachable warm liner pocket

The warm liner double pocket of outer material shall consist of two pockets 160 width x 200 mm depth with a top stitched pocket sized 80 mm x 200 mm.

The pocket mouth shall be double jetted, constructed from outer material and of finished length 15 cm, positioned 30 mm below the level of the scye. The pocket bag shall be of lining (see 4.1.2) and the depth shall be 22 cm.

4.5.4 Back

The back shall consist of two parts, i.e., a yoke that extends 160 mm from the shoulder seam with the reflective tape below the yoke seam.

4.5.5 Facings and linings

Each forepart shall have an outer material facing that shall be of finished width 45 mm at the shoulder seam shaped to 90 mm at the bottom hem. The stringer of a slide fastener (see 4.1.5) shall be inserted in the front edge seam, between the facing and the forepart. The slide fastener shall extend from the gorge seam of the collar to the bottom edge of the hem. The body and sleeves of the windbreaker shall be fully lined with lining (see 4.1.2) and the bottom of the lining shall have a pleat of at least 15 mm. In each forepart lining, there shall be an inside breast pocket (see 4.5.3.2).

4.5.6 Collar

The collar shall have a separate stand and fall, lined with outer material, and interlined with interlining (see 4.1.3). The seam joining the stand and fall shall be folded into the stand section when finished. The stand and fall at the centre back shall be of finished width 35 mm and 60 mm respectively. The points of the collar shall be of finished length 75 mm. The free edges shall be top stitched 7 mm from the edge.

4.5.7 Sleeves

The sleeves shall be plain two-piece sleeves lined with lining (see 4.1.2). The hind arm seam shall have at the cuff, 20 mm from the edge, a mitred adjustable tab of outer material fused with interlining (see 4.1.3) and lined with outer material. The finished tab shall be of width and length 50 mm and 85 mm respectively. The female section of a press-stud fastener (see 4.1.6) shall be attached to the base of the mitre. Two male sections of press-stud fasteners (see 4.1.6) shall be attached to the hind arm, 60 mm, and 110 mm from the hind arm seam.

4.5.8 Detachable lining

The detachable warm lining shall consist of a back and two fronts of one layer of wadding (see 4.1.4) sandwiched between two layers of lining (see 4.1.2) that is quilted in a diamond shape of dimensions 50 mm by 50 mm. The armholes, fronts, bottom, and neck shall be bound with binding tape (see 4.1.7). Each front shall have a faced slit of lining (see 4.1.2), so positioned for access to the inside breast pockets of the windbreaker. The detachable warm lining shall be attached to the windbreaker by means of a slide fastener (see 4.1.5).

4.5.9 Edges

The front and back yoke shall be top-stitched 7 mm from the edge. The free edges of the collar, front edges and cuff tabs shall be top-stitched 7 mm from their respective edges.

4.5.10 Hems

The bottom and sleeve hem shall be of finished width 40 mm, turned in and tacked at the seams. The bottom hem shall be interlined with interlining (see 4.1.3).

4.5.11 Hanger

A hanger of folded lining (see 4.1.2) of finished length 75 mm and width 10 mm, shall be securely attached below the collar stand at the centre back neck on the inside of each windbreaker.

4.6 Stitches, seams, and stitching's

4.6.1 General

All sewing shall be in accordance with SANS 10101.

4.6.2 Stitches

Stitches shall be as follows:

- a) **side seams, shoulder, sleeve, and sleeve insertion seams:** any of stitch type 515 to 519; and
- b) **all other stitching:** stitch type 301.

4.6.3 Seams

Seams shall be at least 10 mm wide and shall be as follows:

- a) **side seams, shoulder, sleeve, and sleeve insertion:** seam type SSa.
- b) **yoke seams:** seam type SSa-2
- c) **front edges, collar, and cuff tab:** seam type SSae-2; and
- d) **attachment of pocket welts:** LSq-2.

4.6.4 Stitchings

Stitchings shall be as follows:

- a) **hems:** stitching type EFb-1; and
- b) **yoke edges:** stitching type EFa-2

4.6.5 Number of Stitches

- a) **seams and top stitching:** 40 ± 4 per 10 cm.

- b) **buttonholes:** 12 ± 1 per cm; and

buttons: 12 ± 1 per button.

5. Packing, care-labeling, and marking

5.1 Packing

The windbreakers shall be delivered in a clean, dry, and pressed condition and shall be so packed that they will not be damaged in transit or storage. Each windbreaker shall be neatly folded and packed in a plastics envelope of suitable size and shape and then, unless otherwise specified in the order or contract, packed for transit (in units of ten) in acceptable bulk containers. Only windbreakers of the same item number and size shall be packed together in a bulk container (unless quantities ordered are such that packing of the same item number and size only is not justified). Windbreakers of different item numbers and sizes may also be packed together to accommodate the last part of an order or contract.

5.2 Care-labelling

Each windbreaker shall have a woven or printed label that is permanently secured and that provides (in accordance with SABS 011) correct and appropriate care instructions. Printed labels shall comply with the requirements of SANS 1309. All care-labels and their markings shall be such that they outlast the garments.

5.3 Marking

5.3.1 Windbreakers

Each windbreaker shall have a woven fabric label that complies with the requirements of SABS 1309 securely sewn to the inside of the back neck. The label shall provide the following information printed in legible and indelible block letters of height at least 3 mm:

- a) The manufacturer's name or trademark or both.
- b) the size designation.
- c) the date of manufacture.
- d) the item number; and
- e) the composition of the fabric.

5.3.2 Plastics envelopes

Each envelope shall be clearly marked with the size designation (as given in column 1 of table 1) and the item number of the contents.

5.3.3 Bulk containers

Each bulk container shall have a label securely attached to the outside. This label shall be visible when the containers are stacked and shall provide the following information:

- a) The manufacturer's name or trademark or both.
- b) the designation, i.e., "Windbreakers, men's".
- c) the size designation.
- d) the quantity.
- e) the package numbers.
- f) the year of manufacture; and
- g) the item numbers.

5.4 Additional marking

When so required by Transnet Limited, windbreakers, envelopes or containers, or any combination of these three, shall bear information additional to that specified in 5.

Special conditions of tender

A-1 Unless otherwise stated, Transnet Limited (or an officer or organization deputed by it), shall be the inspecting authority.

A-2 Sample submission will be according to the RFP/ RFQ requirements.

A-3 The windbreakers shall be subject to inspection during manufacture. The inspector shall, during normal working hours, be given all reasonable facilities for carrying out his duties and shall have the right of entry into the contractor's factory and the factory or works of any subcontractor where work on windbreakers supplied to this specification may be in progress.

A-4 The contractor shall inspect the finished windbreakers for compliance with the specification before submitting them to the inspecting authority for final inspection.

A-5 Before acceptance, the windbreakers shall have been inspected and tested by the inspecting authority and found to comply with the requirements of the specification.

HISTORY SHEET			
REV/NO	DATE	AMENDMENT / HISTORY	REVISED BY
1	January 1999	REVISION	C. DU PLOOY
2	March 2004	REVISION	C. DU PLOOY
3	July 2005	REVISION	C. DU PLOOY
4	November 2005	REVISION	C. DU PLOOY
5	December 2008	REVISION	C. DU PLOOY
6	October 2010	REVISION	C. DU PLOOY
7	May 2017	REVISION	C. DU PLOOY
8	Sept 2018	REVISION	C. DU PLOOY

TRANSNET SPECIFICATION**SPECIFICATION: CSS 286.21 G20****ISSUED: APRIL 1990****REVISED: OCTOBER 2015****Sweaters, Unisex (Jerseys) V-Neck****1 Scope**

This specification covers the material and make of jerseys for personnel of Transnet Limited.

Ref. item No. 35/159164 “Navy” with Transnet logo (**without** shoulder straps)

35/161190 “Navy” with Transnet logo and Hazmat logo (**with** shoulder straps)

35/163455 “Black” with Transnet logo and TRAIN CREW (**with** shoulder straps)

NOTES

1) The following requirements will be specified in tender invitations and in each order or contract:

- a) the size(s) required (see 4.4); and
- b) the appropriate reference item number(s) (see 4.5.4).

2) Special conditions of tender (that cover the conditions of acceptance of the jerseys) are given in annex A.

2 Normative references

The following standards contain provisions which, through reference in this text, constitute provisions of this specification. All standards are subject to revision and, since any reference to a standard is deemed to be a reference to the latest edition of that standard, parties to agreements based on this specification are encouraged to take steps to ensure the use of the most recent editions of the standards listed below. Information on currently valid national and international standards may be obtained from the South African Bureau of Standards.

BS 5811, *Determination of the resistance to pilling and change of appearance of fabrics.*

CSS 286.21, Clothing — LAB/1: *Labelling* — PAC/1: *Packing and marking.*

CKS 129, *Colours for textiles.*

SABS 877, *Woven cotton tapes.*

SANS 1362, *Sewing threads.*

SANS 1004, *Terms and definitions for textiles and textile merchandise.*

SANS 10101, *Standard nomenclature for stitches, seams and stitchings.*

SANS 10188, *Standard methods of garment measurement.*

SANS method 275, *Wales and courses per unit length in knitted textile fabrics (counting method).*

SANS method 405, *Colour fastness of textiles to artificial light: Xenon lamp method*

SANS method 442, *Textiles — Colour fastness to washing — Test 1.*

SANS method 731, *Textiles — Colour fastness to perspiration (histidine method).*

SANS method 960, *Dimensional changes of textile fabrics during washing.*

SANS method 1104, *Stitch length of weft-knitted fabrics.*

3 Definitions

For the purposes of this specification, the following definitions shall apply:

3.1 acceptable: Acceptable to the Executive Manager Transnet Limited.

3.2 nominal: Subject to the tolerances normal to good manufacturing practice.

4 Requirements

4.1 Materials

NOTE — No material will be supplied by Transnet Limited

4.1.1 General

The materials specified in 4.1.2 and 4.1.3 shall be supplied and used by the manufacturer. For reference item No. 35/98340 the colour shall be an acceptable match to colour No. 616c "Purple navy" of CKS 129.

4.1.2 Knitted fabric

The knitted fabric shall comply with the requirements given in table 1.

Table 1 - Knitted requirements

1	2	3
Property	Requirement	Method of test
Composition	65% Acrylic 35% Wool ¹⁾	Microscopical examination and chemical analysis
Construction		Visual examination
Body and sleeves	1 x 1 rib	
Neck	1 x 1 rib	
Cuffs	2 x 2 rib	
Waistband	2 x 2 rib	SANS
Wales per 10 cm, min.		
Body and sleeves	64 ± 2	
Rib & cuffs	56 ± 2	SABS method 1104
Courses per 10 cm, min.		
Body and sleeves	95 ± 3	SABS method 79
Rib & cuffs	80 ± 3	
Mass per unit area, g/m ² , min.		
Body and sleeves	415	
Resistance to pilling, rating, min.	3-4	
Dimensional changes on washing, %, max.		BS 5811 ¹⁾
Length	5	
Width	8	
Colour fastness to light, rating, min. ...	5	SABS method 405
Colour fastness to washing, rating, min.		SABS method 442
Change in colour	4	
Staining of transfer cloths	4	
Colour fastness to perspiration, rating, min.		SABS method 731
Change in colour	4	
Staining of transfer cloths	4	

4.2 Workmanship

The jerseys shall be made with first-class workmanship throughout and shall be free from defects that affect their appearance or may affect their serviceability (or both), and from marks, spots and stains incurred in the making up. All seams shall be smooth and all stitching uniform and free from twists, pleats, and puckers. All ends of sewing shall have been trimmed and loose threads removed. The jerseys shall be of uniform and acceptable make, colour, and finish.

4.3 Style

The jerseys (see figure 1) shall have a V- Neck, a waistband at the lower edge of the body, and the sleeves shall have a single cuff.

4.4 Sizes

The jerseys shall be supplied in one or more of the size designations given in column 1 of table 2, as specified in the order or contract, and their measurements, determined (where applicable) in accordance with SANS 0188.

Table 2 - Size range

1	2	3	4	5	6
Size designation 1)	Nominal finished garments measurements, cm				
	Chest	Back Length	Underarm Sleeve Length	Sleeve circum.2)	Depth of V-neck
XS (72-77)	82	60	44	36	20
S (82-87)	92	63	46	37	20
M (92-97)	102	68	48	40	20
L (102-107)	112	70	50	42	20
XL (112-117)	122	72	51	44	22
2XL (122-127)	132	73	52	46	22
3XL (132-137)	142	74	52	48	22
4XL (142-147)	152	78	54	48	22
5XL (152-157)	162	80	54	50	24
6XL (162-167)	172	82	54	50	24
(1) Based on the chest girth, in centimetres, of intended wearer					
(2) Measured at the widest point of the sleeve					

4.5 Make

NOTE — Unless inconsistent with the text, all measurements are nominal.

4.5.1 Body

The body of a jersey shall consist of two parts (i.e., a front and a back) that are seamed together at the sides and shoulders and secured at the bottom of the side seams. The lower edge of the body shall have a rib welt (See table 1) of depth 80 mm. Each shoulder shall be stayed on the inside with stay tape (see 4.1.4) or with knitted fabric of width (in the direction of the courses) 15 mm, that is (in both cases) sewn in with the shoulder seam. The sleeves will be set-in-sleeves.

4.5.2 Neck opening

The neck opening shall be oval and shall be positioned centrally on the front. It shall be finished off with a ribbed neck trim (see table 1) of finished depth (after it has been folded double and sewn to the neck opening) 50 mm. The neck trim shall be neatly closed on the left side (As worn) in line with the shoulder seam.

4.5.3 Sleeves

The sleeves shall be one-piece set-in sleeves that are seamed under the arms and secured at the bottom of the seams and tapered to the rib cuff. The sleeve shall be knitted-on single cuff of length 10 cm.

4.5.4 Shoulder straps only for ref 35162437

The shoulder straps shall be mitred straps, of outer fabric and lined with outer fabric of finished width 50 mm at the shoulder and tapering to 40 mm at the buttonhole end, and 14 cm long. The edges of the straps shall be top stitched 6 mm from the edge.

4.5.5 Logos

Transnet Logo:

Logo on left chest as specified below. Embroidered with an acceptable embroidery thread.

The colour of the embroidery thread shall be an acceptable match to colour No. 1c "White" of CKS 129 and the logos shall be as follows.

Train Crew logo:

Logo on left chest as specified below. Embroidered with an acceptable embroidery thread.

The colour of the embroidery thread shall be an acceptable 100% Viscose machine embroidery thread. Colour to be an acceptable match to Pantone colour no. 376 "Olive Green"

The words TRAIN CREW to be embroidered with an acceptable 100% Viscose machine embroidery thread. Colour to be an acceptable match to Pantone colour no. 376 "Olive Green"

4.6 Stitches, seams and stitchings

4.6.1 General

All sewing shall be in accordance with SANS 0101.

4.6.2 Stitches

The stitches shall be as follows:

a) **all other sewing:** stitch type 504 or other acceptable type of overlocking stitch

4.6.3 Seams

The seams shall be as follows:

a) **all other seams:** seam type SSa and finished with cover thread (see 4.1.6.2).

4.6.4 Number of stitches

The number of stitches per 10 cm (for both seams and cover thread) shall be 40 ± 4 throughout.

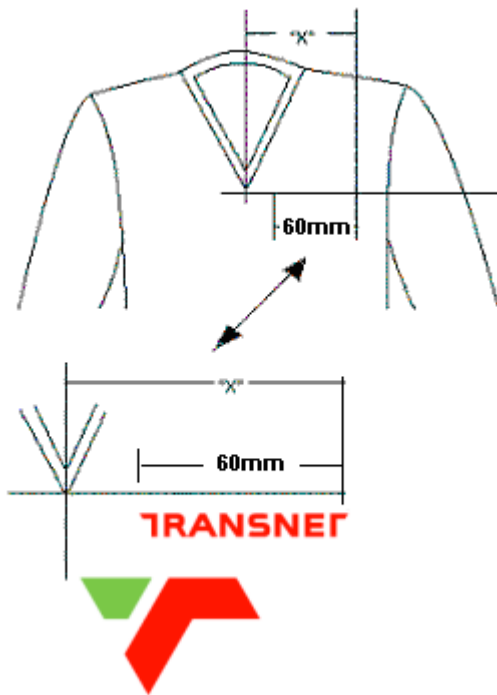
5 Labelling, packing, and marking

5.1 Labelling

As specified in CSS 286.21 LAB/1.

5.2 Packing and marking

As specified in CSS 286.21 PAC/1.



POSITION OF LOGO (cm.)													
SIZE DESIGNATION	72	77	82	87	92	97	102	107	112	117	122	127	132
DIMENTION "X"	12	13	13	14	14	15	15	16	16	17	17	18	18

"X" "Distance from centre of garment to logo

For reference no. 35/161190, Hazmat logo.

The best practice of applying this logo will be an embossed logo for the purpose of detail and definition.

The logo to be applied on right hand side when worn.



Annex A
(normative)**Special conditions of tender**

A-1 Unless otherwise stated, Transnet Limited (or an officer or organization deputed by it), shall be the inspecting authority.

A-2 Sample submission will be according to the RFP/ RFQ requirements.

NOTE: When new dye batches of yarn are to be used in production, a sample piece of the knitted fabric, 50 cm x 50 cm, with the dye batch clearly marked, shall be tested, and approved by the inspecting authority before the dye batch may be used in production.

A-3 The jerseys shall be subject to inspection during manufacture. The inspector shall, during normal working hours, be given all reasonable facilities for carrying out his duties and shall have the right of entry into the contractor's factory and the factory or works of any subcontractor where work on jerseys supplied to this specification may be in progress.

A-4 The contractor shall inspect the finished jerseys for compliance with the specification before submitting them to the inspecting authority for final inspection.

A-5 Before acceptance, the jerseys shall have been inspected and tested by the inspecting authority and found to comply with the requirements of the specification.

HISTORY SHEET			
REV/NO	DATE	AMENDMENT / HISTORY	REVISED BY
1	January 1999	REVISION	C. DU PLOOY
2	February 2004	REVISION	C. DU PLOOY
3	November 2005	REVISION	C. DU PLOOY
4	November 2008	REVISION	C. DU PLOOY
5	November 2010	REVISION	C. DU PLOOY
6	April 2011	REVISION	C. DU PLOOY
7	June 2012	REVISION	C. DU PLOOY
8	October 2015	REVISION	C. DU PLOOY

Dual purpose coats (Unisex)

Reference no. 35/84220 AND 35162437 (TRAIN CREW)

1. Scope

This specification covers the materials of coats intended for personnel employed by Transnet Limited.

NOTES

1) The following requirements will be specified in tender invitations and in each order or contract:

a) the outer material, if other than as specified (see note to 4.1); and

b) the size designation(s) required (see 4.4).

2) Special conditions of tender (which cover the conditions of acceptance of the garments) are given in annex A.

2. Normative References

The following standards contain provisions, which through reference in this text constitute provisions of the specification. All standards are subject to revision and, since any reference to a standard is deemed to be a reference to the latest edition of that standard, parties to agreements based on this specification are encouraged to take steps to ensure the use of the most recent editions of the standards listed below. Information on currently valid national and international standards may be obtained from the South African Bureau of Standards.

CSS 286.21, Clothing -- LAB/1: Labelling -- PAC/1: Packing and marking.

SANS 79, Textiles – Mass per unit area of conditioned fabrics

SANS 105-BO2, Tests for colour fastness – Part Bo2: Colour fastness to artificial light: Xenon artificial lamp test.

SANS 1309, Printed labels for textiles.

SANS 1360-1, Size designation of clothes -- Part 1: Women's and girls' outerwear garments.

SANS 1362, Sewing threads

SANS 1387-7 Woven cotton and similar apparel fabrics - Part 7: Jacket Linings

Part 11: Polyester and viscose raincoat fabric

SANS 1822, Slide (zip) fasteners.

SANS 5278 Sewing stitches per unit length

SANS 7211-2, Textiles-Woven fabrics – Construction – Method of analysis Part 2: Determination of number of threads per unit area.

SANS 10076-6, The assessment of defects in textile piece-goods and made-up articles-Part 6: Defects in woven Filament piece-goods (synthetics)

SANS 10076 - 7, The assessment of defects in textile piece-goods and made-up articles-Part 7: Defects in household articles

SANS 13934 –1, Textiles-Tensile properties of fabrics. Part 1. Determination of maximum force and elongation at maximum force using the strip method s Part 1

SANS 10101, Standard nomenclature for stitches, seams, and stitchings.

SANS 10188, Standard methods of garment measurements.

SANS 100004, Terms and definitions for textiles and textiles merchandise.

SANS 10011, Care-labelling of textiles piece goods, textiles articles and clothing

3. Definitions

For this specification, the following definitions shall apply:

3.1 acceptable: Acceptable to Executive Manager, Transnet Limited.

3.2 nominal: Subject to the tolerances normal to good manufacturing practice.

4. Requirements

4.1 Materials

NOTE: Reference no. 35/84220 The colour will be an acceptable match to colour No. 2015c/1997 of CKS 129 "Navy" Reference no 35162437 (TRAIN CREW) Black Cloth, Twill. Colour navy 65% Polyester / Viscose to SANS 1387-2 Type RPR 66 / Latest.

The quantity supplied will be in accordance with the material ratings agreed to for the fulfilment of the contract.

4.1.1 General

The materials specified in 4.1.2 to 4.1.11 (inclusive) all a colour that is an acceptable match to that of the outer material, shall be supplied and used by the manufacturer.

4.1.2 Interlining

An acceptable fusible woven or non-woven interlining that complies with the requirements of CKS 627 for interlinings that are suitable for use in garments that will be dry-cleaned. The mass per unit area shall be such that the interlining is suitable for use in the forepart, collar, welts, cuff-tabs, and the bottom of the sleeve. The selection of interlinings of appropriate type and mass per unit area shall be determined by consultation with the manufacturer(s) of the interlining(s).

4.1.3 Detachable warm lining, body, and sleeve lining

A polyester lining that complies with the requirements for type L61P of SANS 1387 - 7.

4.1.4 Coated inner lining

The inner lining shall be coated fabric that complies with the requirements given in the table 1. (L61P of SANS 1387-7)

4.1.5 Wadding for detachable warm lining

A non-woven polyester fill of nominal mass per unit area 85 g/m² which has a finish on both sides to prevent fibre penetration.

4.1.6 Pocketing

An acceptable polyester-and-cotton pocketing.

4.1.7 Binding tape

An acceptable bias binding tape of nominal width 25 mm.

4.1.8 Buckles

Buckles shall be of steel, neatly covered with fabric, and shall have a centre prong and shall be capable of acceptable accommodating a belt of finished width 50 mm.

4.1.9 Buttons

Four-hole dope-dyed rimmed plastic buttons, of nominal diameter 26 mm. The colour shall be acceptable match to that of the outer material. The backing buttons shall be four-hole plastic buttons of diameter 12 mm

4.1.10 Eyelets with washer

Acceptable black corrosion-resistant metal eyelets with washers, and having a nominal inside diameter of 4 mm.

4.1.11 Slide fastener

Detachable warm liner One-way open end slide fasteners with spiral elements that comply with the requirements of SANS 1822

Table 1 - Coated inner lining

1	2	3
Property	Requirements	SANS number
	Type	
	L61P	
Composition of base fabric.	100% Polyester	AATCC 20
Weave.....	Plain	Visual examination
Mass of coated fabric, (free from non-fibrous material). g/m ² , min	70	79
Number of threads per cm ¹⁾ , min.		7211-2
Warp	39	
Weft ²⁾	22	
Breaking strength, N, min.		13934-1
Warp	550	
Weft	520	
Resistance to opening at seams ³⁾ , N. min	65	5726
Removable non-fibrous material content. % Max.....	3	5966
Dimensional changes on:		
Dry cleaning, (warp & weft), %, max	2	
Laundering (warp & weft), %, max		960: Washing procedure A1
Press dry.....	2	Dry cleaning procedure E
Tumble dry.....	3	Dry cleaning procedure F
Colourfastness to:		
Washing, rating, min.....		11166: procedure C
Change in colour.....	4	
Staining of transfer cloths.....	3	
Dry cleaning, rating, min		105-D01
Change in colour.....	4	
Staining of transfer cloths.....	4	
Perspiration, rating, min		105-E04
Change in colour.....	4	
Staining of transfer cloths.....	3-4	
Light, rating, min.....	3	105-B02
1) Suitable yarn linear densities are given in annex B. 2) Subject to a tolerance – 10 % 3) Determined on the fabric as received, and after dry cleaning in accordance with ISO 3175-2, also after washing in accordance with sans 96: procedure A1		

4.1.11 Threads

Threads shall comply with the relevant requirements of SABS 1362 and there shall be as follows:

- a) sewing threads: a polyester-and-cotton core-spun thread or a stable polyester thread, ticket No. 80 (in both cases).
- b) buttonhole thread: a mercerised cotton thread, ticket No. 36.
- c) buttonhole gimp: a glaze cotton thread ticket No. 10.

4.2 Workmanship

The garments shall be cut and made with first-class workmanship throughout and shall be free from defects that affect their appearance or may affect their serviceability (or both), and from marks, spots and stains incurred in the making up. All seams shall be smooth and all stitching uniform and free from twists, pleats and puckers and shall be sufficiently extensible to obviate seam cracking and undue shrinkage in use. All ends of sewing that are not secured in seams or other sewing shall be adequately back tacked. All ends of sewing shall have been trimmed and loose threads removed. The garments shall be of uniform and acceptable make, colour and finish, and the matching of the shades of the component parts of a coat shall be such as to be acceptable.

4.3 Style

The dual-purpose coat shall be double-breasted coat with a 3-button fastening, and with raglan sleeves (SEE Fig.1 and Fig.2) as specified. There shall be a seam and a vent at the centre back, a two-way storm collar, two welted side pockets with through opening, front and back laid-on shoulder yokes, a loose belt, a detachable lining. The body and sleeves shall be fully lined with body lining, and the body, sleeves and shoulder yokes shall be inner lined with a coated inner lining.

4.4 Sizes

The dual-purpose coats shall be supplied in one or more of the size designations given in column 1 of table 2 as specified in the order or contract. Their measurements, determined in accordance with SABS 0188, and shall conform to the appropriate values given in table 2. The patterns shall conform to the specification and to the sealed sample and shall be drafted by the manufacturer.

Table 2 Size chart

1	2	3	4	5	6	7	8
Size designation ¹⁾		Nominal finished garment measurements, cm					
Cm	inches	Chest	Back Length	Back width	Sleeve length ²⁾	Cuff circumference	Hem circumference
72	28	88	119	36	74	29	147
77	30	93	119	37	75	29	152
82	32	98	119	38	76	30	157
87	34	103	122	39	77	30	162
92	36	108	125	40	78	32	167
97	38	113	126	41	80	32	172
102	40	118	127	42	81	34	177
107	42	123	128	43	82	34	182
112	44	128	128	44	83	36	187
117	46	133	128	45	84	36	192
122	48	138	128	46	84	37	197
127	50	143	129	46	85	37	202
132	52	148	129	47	85	38	207
137	54	153	129	47	86	38	212
142	56	158	130	48	86	39	217
147	60	163	130	48	87	39	222
152	62	168	130	49	87	40	227
157	64	173	131	49	87	40	232
162	66	178	131	50	88	41	237
1) Based on the bust measurement of the intended wearer							
2) Measured from the center back to the end of the cuff							

1) The sealed sample is held by, and may be viewed at, the Transnet Freight rail Clothing Division.

4.5 Make

NOTE - Unless inconsistent with the text, all measurements are nominal.

4.5.1 Forepart

Each forepart (see figure 1) shall be interlined with fusible interlining (4.1.2), fully interlined with coated interlining (4.1.4) and fully lined with rayon lining and shall have side pockets. The break of the lapel shall have a stay of a suitable fusible tape of width 25 mm. The finished width of a lapel from the point to the crease-line of the lapel shall be 13 cm.

4.1.2 Pockets

Each forepart shall have a semi-vertical welted side pocket (forming an angle of 20° with the vertical) of finishing length and with 16 cm and 50 mm respectively, and each pocket shall be stayed with an acceptable material. The welts shall be lined with outer-material and interlined with fusible interlining (see 4.1.2) and the welt shall be top-stitched 7 mm from the free edge on the pocket mouth. The ends of the welt shall be securely stitched down 1 mm and 7 mm from the free edge. The pocket bag shall be of pocketing (see 4.1.6) and shall be of finished width and depth 14 cm and 11 cm respectively (measured at the bottom of the pocket mouth) and the top of the pocket bag shall be stayed.

4.5.3 Back

The back (see figure 2) shall be plain.

4.5.4 Facings and linings

Each front shall have a facing of finished width 25mm at the neck shaped to 100 mm at the finished hem. One piecing of a facing shall be permitted provided that the join is between the bottom buttonhole and the hem of the coat. The seam joined the lining and inner to the facing shall be securely fastened. The inner lining shall extend to within 30mm of the button of the finished lining. The lining shall extend to within 25 mm of the bottom of the coat, shall have a hem bottom, and shall be attached, at each side seam, to the hem of the coat by means of length 60 mm off doubled rayon lining (see 4.1.2).

4.5.5 Cuff tabs

Each tab shall be of outer material that is lined with self-material and interlined with fusible interlining (see 4.1.2). The cuff tab shall have a mitred end and the width measured at the base of the mitre and at the end of the tab shall be 60 mm and 40 mm respectively. The finished length of the tab shall be (measured from the raglan sleeve seam to the mitred end) 90 mm and its free edges shall be top stitched 7 mm from its free edge. The cuff tabs shall be 60 mm above the cuff so positioned out of the outer sleeve seam that the mitred end faces the outside. Each cuff tab shall have 20 mm buttonhole so positioned with the eye of the buttonhole in line with the base of the mitre.

4.5.6 Raglan Sleeves

Raglan sleeves (see Fig. 1) shall be two-pieces raglan sleeves with a centre seam and an underarm seam, the underarm seam being a pressed open seam and the centre seam top-stitched. Each sleeve shall have a mitred tab of a double thickness of outer material sewn in with the underarm seam 60 mm from the lower edge of the sleeves. A finished tabs shall be 80 mm long, 40 mm wide at the underarm seam and 60 mm wide at the base of the mitre. A tab shall fasten to the sleeves with a buttonhole in the base of the nitre and a button at the corresponding position on the sleeves. In addition, there shall be a second button on the cuff 50 mm beyond the first button. The sleeves shall be fully lined with rayon lining (see 3.1.2) and inner lined with coated inner lining (see 3.1.6).

4.5.7 Collar

The collar shall be a two-way storm collar interlined with fusible interlining 9SEE 3.1.5). The under collar shall be of outer material and may have a center seam. The collar shall have a stand of with 40 mm and a fall of width 80 mm.

4.5.8 Shoulder straps only for ref 35162437

The shoulder straps shall be mitred straps, of outer fabric and lined with outer fabric of finished width 50 mm at the shoulder and tapering to 40 mm at the buttonhole end, and 14 cm long. The edges of the straps shall be top stitched 6 mm from the edge.

4.5.9 Belt

The belt shall be of doubled outer material, shall be interlined with fusible interlining (see 4.1.2), and shall a finished width 50 mm, an outer-material runner loop at one end and a mitred point at the outer. At the mitred end there shall be five eyelets with washers (see 4.1.10) spaced at 50 mm centres, the first eyelet being positioned 70 mm from the point. Then length of a finished belt (measured from the middle eyelet to the buckle) shall be equal to the circumference of the coat (when buttoned) at the waistline. The belt shall be stitched through the centre along its length.

4.5.10 Hanger

A hanger of folded outer material, or lining, of finished length 90 mm and width 10 mm, shall be securely attached to the collar stand at the centre back neck on the inside of each coat.

4.5.11 Detachable lining

The body of a coat shall have a detachable lining (see 4.1.5), of a knitted pile fabric (see 4.1.3), and the length such as to extend beyond the top of the vent, and that buttons to the inside of the body. On each front there shall be a pocket opening, of finished length 20 cm, that is inserted in apposition corresponding to that of the pocket opening in the forepart.

4.5.12 Buttonholes

- a) General. All buttons shall be neatly made, gimped, and barred
- b) 30 mm long buttonholes. There shall be four 30 mm long buttonholes in the left forepart, i.e., one in the point of the lapel, and three near the front edge, the first being at the lapel, and three near the front edge, the first being at the lapel break the third level with the lower end of the welt of the pocket, and the second midway between the other two. In the right forepart there shall be 30 mm long buttonholes, i.e., one in the point of lapel, and the other either at the lapel break or in a position corresponding to that of the second of the three buttonholes in the left-front, depending on the position of the jigger button (see 4.1.7).

One in each sleeve tab, one in the vent underlay and thirteen vertically inserted in the detachable lining i.e., three across the back of the neck and five in each front.

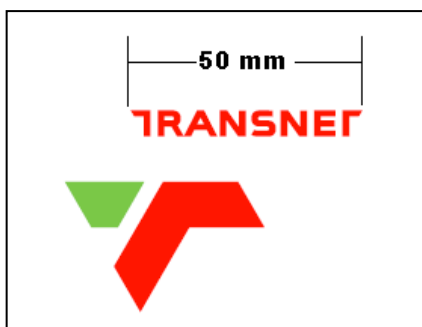
4.5.13 Buttons

- a) Each forepart shall have three 25 mm buttons, the buttons on the right front in position that correspond to those of the three 30 mm long buttonholes in the left front, and the buttons on the left forepart horizontally aligned with those three buttonholes. The right front shall have, in addition, one 19 mm button at the gorge under the collar. The left forepart shall have on the inside a 25mm jigger button either behind the button at the level of the lapel break, or behind the middle button. Each 25 mm button, other than that backed by the jigger button shall be reinforced on the inside by a backing button.
- b) There shall be twenty 14 mm buttons positioned as follows:
 - 1) One on each shoulder.
 - 2) Two on each cuff:
 - 3) One on the overlay of the vent: and

4.5.13 Transnet Logo

For reference no. 35/84220 embroidered in white

For reference no. 35162437 (TRAIN CREW) Olive Green



4.5.14 Embroidery thread

The words TRAIN CREW to be embroidered with an acceptable 100% Viscose machine embroidery thread. Colour to be an acceptable match to Pantone colour no. 376 "Olive Green"

4.5.15 Edges

The front edges, lapels and the collar shall be top stitched 9 mm from the free edge.

4.5.16 Hems

The bottom hem of the outer material shall be of finished depth 25 mm and the bottom of the lining shall be 25 mm. The two hems shall be attached on each side seam with a lining strap of finished width and length 25 mm and 60 mm respectively. The hems of the sleeves shall be finished depth 40 mm.

4.5.17 Loops

A loop of folded outer material of finished width 10 mm and of finished length 70 mm shall be positioned at the waistline on each side seam.

4.6 Stitches, seams and stitchings**4.6.1 General**

All sewing shall be in accordance with SABS 0101.

4.6.2 Stitches

All stitches, stitch type 301.

4.6.3 Seams

Seams shall be as follows:

- a) front edge, collar, and cuff tabs: seam type Sse-2.
- c) side and sleeve seams: seam type Ssa-1 and pressed open.
- c) bias-binding for warm lining: seam type Bsc-1/ and
- d) all other seams: seam type SSa-1.

4.6.4. Stitchings

The stitching shall be as follows:

- a) set in seam of welt: stitching type Sq.; and
- b) bottoms hem of outer material and lining: stitching type EFb-1.

4.6.5 Number of stitches

The number of stitches shall be as follows:

- a) all main seaming and top-stitched: 40 ± 4 per 10 cm.
- b) buttonholes: 12 ± 1 per cm; and
- c) bar tacks: 20 ± 2 per cm.
- d) buttons: 16 ± 1 per button.

5 Labelling, packing, and marking**5.1 Labelling**

As specified in CSS 286.21 lab/1.

5.2 Packing and marking

As specified in CSS 286.21 PAC/1.

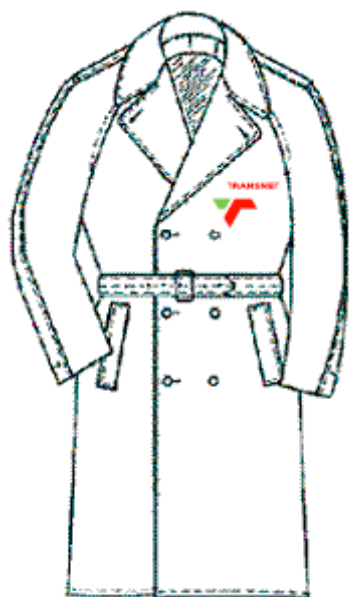


Figure 1 - Front Raglan Sleeve

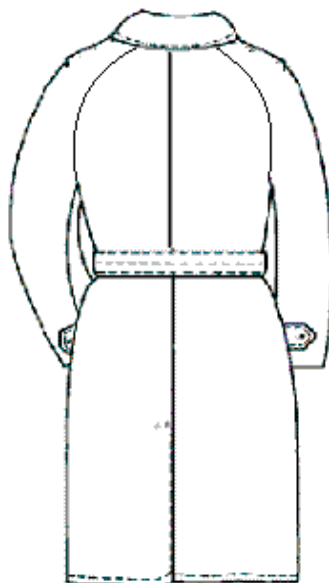


Figure 2 - Back Raglan Sleeve

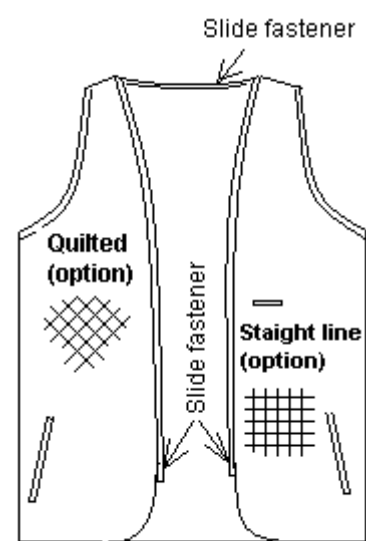


Figure 3 - Detachable warm lining

Annex A
(Normative)**Special conditions of tender**

A-1 Unless otherwise stated, Transnet Limited (or an officer or organization deputed by it), shall be the inspecting authority.

A-2 Sample submission will be according to the RFP/ RFQ requirements.

A-3 The Dual-Purpose Coats shall be subject to inspection during manufacture. The inspector shall, during normal working hours, be given all reasonable facilities for carrying out his duties and shall have the right of entry into the contractor's factory and the factory or works of any subcontractor where work on Dual Purpose Coats supplied to this specification may be in progress.

A-4 The contractor shall inspect the finished Dual-Purpose Coats for compliance with the specification before submitting them to the inspecting authority for final inspection.

A-5 Before acceptance, the Dual-Purpose Coats shall have been inspected and tested by the inspecting authority and found to comply with the requirements of the specification.

HISTORY SHEET			
REV/NO	DATE	AMENDMENT / HISTORY	REVISED BY
1	October 2005	REVISION	C. DU PLOOY
2	November 2010	REVISION	C. DU PLOOY
3	June 2012	REVISION	C. DU PLOOY
4	July 2016	REVISION	C. DU PLOOY

Dust Coats

Reference Item No. 35/96239 "Orange" with Transnet Logo

(Registered colour No. 232c "Transnet Orange" of CKS 129)

1. REQUIREMENTS:**1.1 MATERIAL**

1.1.1 The outer material ref. no. 35/96239 shall be all cotton drill fabric that complies with the requirements for type J54 of SANS 1387 – 4 and shall be of a colour that is acceptable match to colour No. 232c "Transnet Orange" of CKS 129

1.1.2 Copy of cloth compliance certificate to accompany tender documents

1.1.2 All trimmings to be supplied by contractor.

1.2 GARMENT

The Dust coat will comply with the requirements (other than Size chart, Packing and Marking Labeling of Garments) to SABS.1068/Latest.

- (a) Style figure (a) C1 full length coat.
- (b) Detachable button having metal shanks with split rings.
- (c) One-piece set-in sleeve, plain cuffs.
- (d) Pockets to be square.
- (e) Side pocket stay to extend from side seam to front edge of pocket.
- (f) Ref Reflective strips shall comply with requirements other than positing and colour to:
SANS 50471: 2006 / EN 471: 2003
One strip on waist & sleeves circumference to be ± 12 cm from underarm.
Colour to be silver (17mm) on lime (50 mm) according to class 2

1.3 MINOR DEVIATIONS:

- (a) Buttonholes:
Buttonholes shall be of the trouser type (fishtail), shall be large enough to neatly accommodate the buttons and shall be neatly gimped.

1.4 LOGO:

Horizontal logo: silk - screened on pocket.

"Stewart Blue" Transnet logo Silk - screened in White*

* "White" Close colour match to No 1C/2 of CKS.129/Latest.

1.5 SCREENPRINTING:

Colour fastness of screen-printing to washing. The numerical ratings for change in colour and staining or transfer cloths, determined in accordance with the relevant SABS Method, shall not be less than 4.

1.6 LABELING

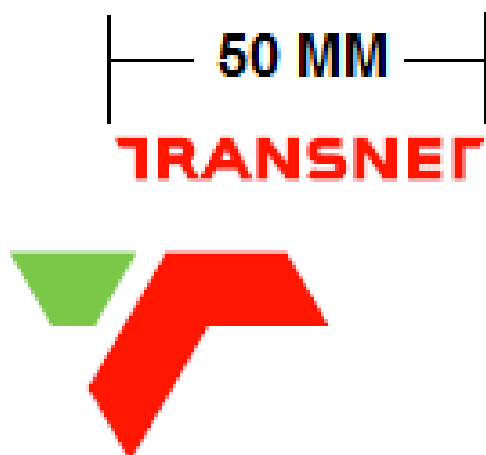
The garment shall be labeled and marked in accordance with the requirements of specification CSS.286.21 LAB/1.

1.7 PACKING:

The garments shall be packed and marked in accordance with requirements of specification CSS.286.21 PAC/1.

1.8 SIZE CHART

1	2	3	4	5	6	7
Size designation ¹⁾	Nominal finished garment measurement, cm					
	Chest	Back length	Back Width	Sleeve length ²⁾	Depth of scye	Vent length
82	99	104	39	51	30	35
87	104	106	41	52	30	35
92	109	106	43	52	32	35
97	114	108	45	53	32	35
102	119	110	46	53	34	35
107	124	112	48	54	34	35
112	129	112	50	54	36	35
117	134	112	52	55	36	35
122	139	112	54	55	38	35
127	144	112	56	56	38	35
132	149	114	58	56	38	35
137	154	114	60	57	39	35
142	159	114	62	57	39	35
1) Based on the chest size, in centimeters, of the intended wearer in cm						
2) Underarm seam to the bottom edge of sleeve.						



Annex A
(normative)

Special conditions of tender

A-1 Unless otherwise stated, Transnet (or an officer or organization deputed by it), shall be the inspecting authority.

A-2 Sample submission will be according to the RFP/ RFQ requirements.

A-3 The coats shall be subject to inspection during manufacture. The inspector shall, during normal working hours, be given all reasonable facilities for carrying out his duties and shall have the right of entry into the contractor's factory and the factory or works of any sub-contractor where work on shirts supplied to this specification may be in progress.

A-4 The contractor shall inspect the finished coats for compliance with the specification before submitting them to the inspecting authority for final inspection.

A-5 Before acceptance, the coats shall have been inspected and tested by the inspecting authority and found to comply with the requirements of the specification.

HISTORY SHEET			
REV/NO	DATE	AMENDMENT / HISTORY	REVISED BY
1	March 2004	REVISION	C. DU PLOOY
2	September 2004	REVISION	C. DU PLOOY
3	May 2007	REVISION	C. DU PLOOY
4	December 2008	REVISION	C. DU PLOOY
5	November 2010	REVISION	C. DU PLOOY
6	December 2008	REVISION	C. DU PLOOY

Knitted caps

Reference item nos. 35/98340 "NAVY" without Transnet logo

Reference item nos. 35/163860 "BLACK" (Train Crew) with Transnet logo

1 Scope

This specification covers the material and make of knitted caps for use by male personnel of Transnet Limited.

NOTES

The following requirements will be specified in tender invitations and in each order or contract:

a) the reference item number.

2 Normative references

The following standards contain provisions which, through reference in this text, constitute provisions of this specification. All standards are subject to revision and, since any reference to a standard is deemed to be a reference to the latest edition of that standard, parties to agreements based on this specification are encouraged to take steps to ensure the use of the most recent editions of the standards listed below. Information on currently valid national and international standards may be obtained from the South African Bureau of Standards.

CSS 286.21, Clothing — *LAB/1: Labelling — PAC/1: Packing and marking.*

CKS 129, Colours *for textiles.*

SABS 1362, Sewing *threads.*

SABS 0101, Standard *nomenclature for stitches, seams and stitchings.*

SABS method 72, linear density of textile yarns (other than stretch-type yarns) on packages

SABS method 74, twist in textile yarns on packages

SABS method 79, mass per unit area of conditioned textile fabrics.

SABS method 275, Wales and courses per unit length in knitted textile fabrics (counting glass Method)

SABS method 405, Colour fastness of textile to artificial light: xenon lamp method.

SABS method 442, Textile – colour fastness to washing – test 1.

SABS method 731, Colour fastness of textiles to perspiration (histidine method).

SABS method 960, Dimensional *changes of textile fabrics during washing.*

3 Definitions

For the purposes of this specification, the following definitions shall apply:

3.1 acceptable: Acceptable to the Executive Manager Transnet Limited.

3.2 nominal: Subject to the tolerances normal to good manufacturing practice.

4 Requirements

4.1 Materials

NOTE — No material will be supplied by Transnet Limited

4.1.1 General

The materials specified in 4.1.2 and 4.1.3 shall be supplied and used by the manufacturer. For reference item No. 35/98340 the colour shall be an acceptable match to colour No. 616c "Purple navy" of CKS 129.

4.1.2 Knitted fabric

The knitted fabric shall comply with the requirements given in table 1.

Table 1 - Knitted requirements

1	2	3
Property	Requirement	Method of test
Composition	100 % Acrylic ¹⁾	Microscopical examination and chemical analysis
Construction	1 x 1 rib ²⁾	Visual examination
Courses per 10 cm, min.	65	SABS METHOD 275
Wales per 10 cm, min	36	SABS method 275
Mass per unit area, g/m ² , min.	480	SABS method 79
Dimensional changes on washing, %, max. Total area, %, max	6	SABS method 960 Procedure D ³⁾
Colour fastness to light, rating, min. ...	5	SABS method 405
Colour fastness to washing, rating, min. Change in colour	4 4	SABS method 442
Staining of transfer cloths		
Colour fastness to perspiration, rating, min. Change in colour	4 4	
Staining of transfer cloths	4	SABS method 731
1) The acrylic shall be of the high bulk type. 2) Knitted from two ends of suitable linear density Recommended linear density R64 tex/2. 3) Test in tubular form, using ECE detergent instead of soap flakes and dry flat instead of pressing		

4.1.3 Threads**4.1.3.1 Sewing thread**

The sewing thread shall comply with the relevant requirements of SABS 1362 and shall be a polyester-and-cotton core-spun thread, ticket No. 75, or a staple polyester thread, ticket No. 60.

4.1.3.2 Cover thread

The cover thread shall be the yarn as used in the knitted fabric.

4.2 Workmanship

The caps shall be made with first – class workmanship though-out and shall be free from defects that affect their appearance or may affect their serviceability (or both), and from marks, spots and stains incurred in the making up. All seams shall be smooth and stitching uniform and free from twists, pleats, and puckers. All ends of sewing shall have been trimmed and loose threads removed. The caps shall be of uniform and acceptable make, colour, and finish

4.3 Style and make

NOTE — Unless inconsistent with the text, all measurements are nominal.

The caps shall be knitted (see 4.1.2) in the form of a tube, folded double and cut and seamed with four seams of length 9cm at the top and one side seam. The caps shall be made in one size only and shall have an overall finished length of 27 cm and a circumference of 45 cm.

4.4 Stitches, and seams

4.4.1 General

All sewing shall be in accordance with SABS 0101.

4.4.2 Stitches

Stitch Type 504 or other acceptable type of over locking stitch.

a) **attaching of patches:** stitch type 301; and

b) **all other sewing:** stitch type 504 or other acceptable type of overlocking stitch.

4.4.3 Seams

Seam type Ssa finished with cover thread (see 4.1.3.2).

4.4.4 Number of stitches

40 ± 4 per 10 cm for both seams and cover thread.

5 Labelling, packing, and marking

5.1 Labelling

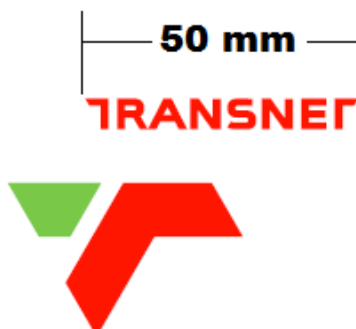
As specified in CSS 286.21 LAB/1.

5.2 Packing and marking

As specified in CSS 286.21 PAC/1.

6 Logos

Reference item no. 35/163860 to be embroidered with an acceptable 100% Viscose machine embroidery thread. Colour to be an acceptable match to Pantone colour n. 376 “Olive Green”



Annex A
(normative)

Special conditions of tender

A-1 Unless otherwise stated, Transnet Limited (or an officer or organization deputed by it), shall be the inspecting authority.

A-2 Sample submission will be according to the RFP/ RFQ requirements.

A-3 The contractor shall inspect the finished knitted cap for compliance with the specification before submitting them to the inspecting authority for final inspection.

A-4 Before acceptance, the Knitted cap shall have been inspected and tested by the inspecting authority and found to comply with the requirements of the specification.

HISTORY SHEET			
REV/NO	DATE	AMENDMENT / HISTORY	REVISED BY
1	April 2004	REVISION	C. DU PLOOY
2	June 2012	REVISION	C. DU PLOOY
3	November 2016	REVISION	C. DU PLOOY

Catalogue Item # 26

PRIVATE SPECIFICATION

prepared for



PARKA JACKET, UNISEX



CSS 286.21 G156

Version 01.0

June 2012

1. Scope

This specification covers the material and make of parka jackets for personnel of Transnet Limited.

ITEM NUMBER: 35162640

2. Definitions

For the purpose of this specification the definitions given in SANS 10371 "Terms and definitions for clothing" and the following shall apply:

Acceptable: Acceptable to the Transnet Limited

Nominal: Subject to the tolerances normal to good manufacturing practice

SANS: South African National Standard

3. Style

- ♦ slide fastener front closure with storm flap
 - storm flap to fasten with press-studs
- ♦ two side pockets
- ♦ fitted with embroidery on the foreparts
- ♦ front panels to have a horizontal seam that shall be covered with a strip of reflective tape
- ♦ each forepart shall consist of two contrasting colours
- ♦ back panels to have a horizontal seam that shall be covered with a strip of reflective tape
- ♦ each back panel shall consist of two contrasting colours
- ♦ turned-down type collar
- ♦ long sleeves that consist of two contrasting colours with a length of reflective tape covering the seam
- ♦ cuffs to be ruched with elastic webbing
- ♦ shoulder straps that fasten with press-studs
- ♦ fully lined with lining
- ♦ fully interlined with wadding

Doc No	Date	Responsibility	Version	Page
CSS 286.21 G156	June 2012	Transnet	V01.0	2 of 22

4. Illustrations

Illustrations are not to scale and are for guidance only.

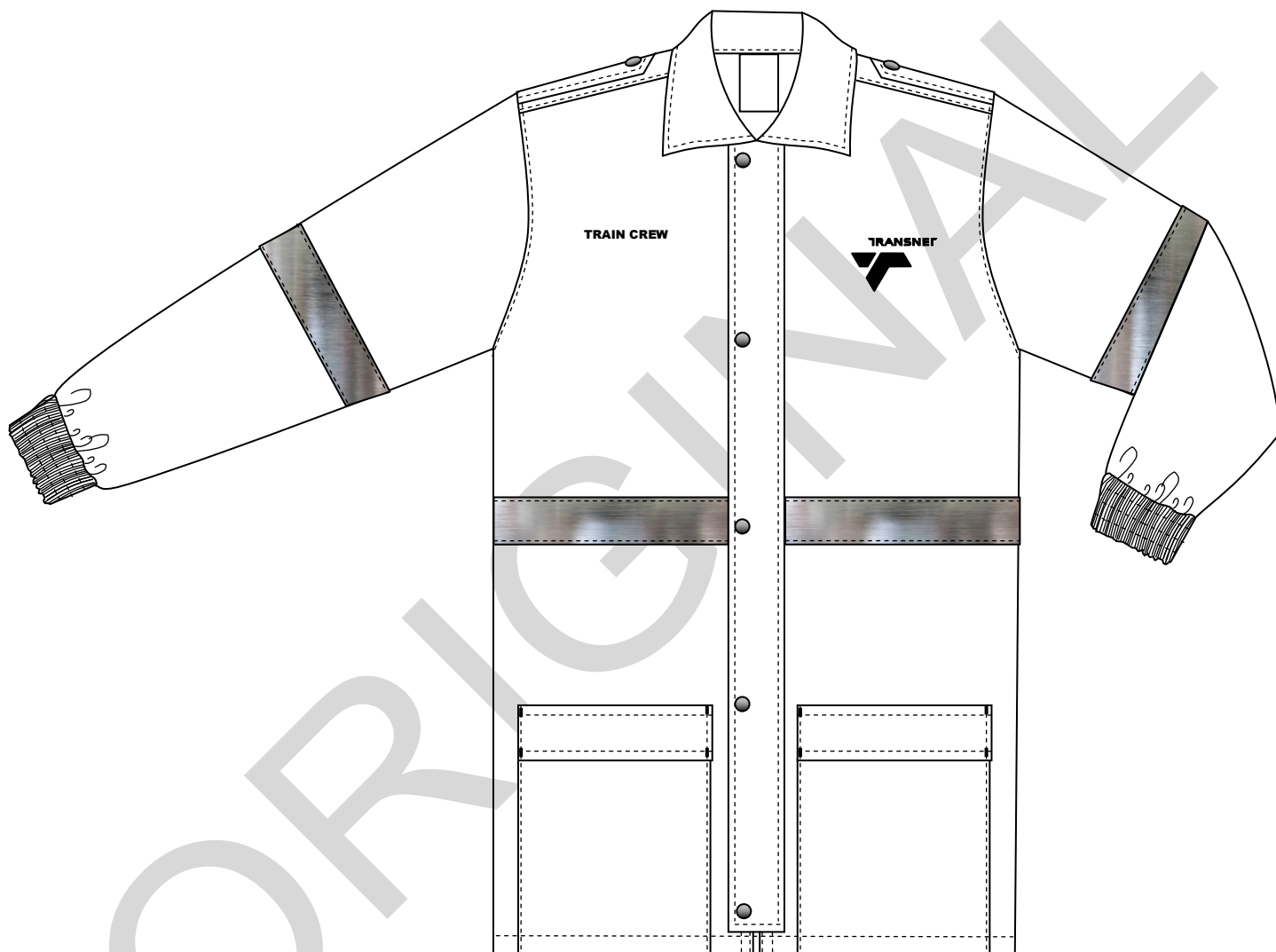


Figure 1 - Front

Doc No	Date	Responsibility	Version	Page
CSS 286.21 G156	June 2012	Transnet	V01.0	3 of 22



Figure 2 - Back

5. Client furnished Materials

No materials will be supplied by the Transnet Limited.

6. Component Materials

The following materials shall be supplied and used by the manufacturer. Trim charts shall also be submitted by the manufacturer (see Annex A).

6.1 Outer material

- ◆ to be an acceptable 2/1 twill Poly/Cotton fabric
- ◆ of nominal mass 235 g/m² when tested in accordance with SANS 79
- ◆ fibre composition to be 65% Polyester and 35% Cotton when tested in accordance with SANS 1833-1 and 1833-11
- ◆ resistance to pilling, colour fastness, dimensional stability requirements to comply with the relevant

Doc No	Date	Responsibility	Version	Page
CSS 286.21 G156	June 2012	Transnet	V01.0	4 of 22

- requirements as given in SANS 1387 -2
- ♦ finish to be such that it shall have a soft handle and shall be as agreed upon between the purchaser and supplier
- ♦ to include a water repellent finish that shall comply with the relevant performance requirements for water repellence as given for type RPR66 of SANS 1387-11
- ♦ to be supplied in two colours:
 - colour 1: an acceptable black colour as agreed upon between the purchaser and supplier
 - colour 2: to be an acceptable match to Pantone Colour No. 376 “Olive green”

6.2 Lining

- ♦ polyester lining that complies with the requirements for type L61P SANS 1387-7 “Woven cotton and similar apparel fabrics – Part 7: Jacket linings”
- ♦ colour to be black

6.3 Interlining

- ♦ acceptable fusible interlining
- ♦ complying with the requirements of CKS 627 “Fusible interlinings”

The selection of interlining of appropriate mass per unit area to be determined by consultation with the supplier of the interlining. The manufacturer will be held responsible for the performance of the interlining.

6.4 Wadding

- ♦ polyester wadding
- ♦ of nominal mass 120 g/m²

6.5 Press stud fasteners

NOTE: Behind each press-stud fastener section shall be a reinforcing patch of outer material on the inside of the jacket (not visible).

- ♦ corrosion resistant metal components with a plastics cap
- ♦ male and female type
- ♦ to consist of a cap, socket, stud and post
- ♦ plastics cap to have dome of nominal outside diameter 15 mm
- ♦ nominal inside diameter of the hole to be 7 mm
- ♦ colour of plastics cap to be black

6.6 Slide fasteners

- ♦ to comply with the requirements of Class D slide fasteners of SANS 1822 “Slide fasteners”
- ♦ synthetic elements
- ♦ colour to be black
- ♦ one-way open end

6.7 Elastic webbing

- ♦ to comply with the requirements for type 1 of SANS 142 “Narrow elastic fabrics and strip”

Doc No	Date	Responsibility	Version	Page
CSS 286.21 G156	June 2012	Transnet	V01.0	5 of 22

- ♦ to be of nominal width 45 mm

6.8 Reflective tape

- ♦ a high visibility reflective silver tape
- ♦ nominal width 37 mm – 40 mm
- ♦ retro-reflective properties to comply with the relevant requirements for a class 2 retro-reflective material of SANS 50471 “High visibility warning clothing for professional use – test methods and requirements”

6.9 Embroidery thread

- ♦ an acceptable 100% Viscose machine embroidery thread
- ♦ colour to be black

6.10 Sewing thread

- ♦ to comply with relevant requirements of SANS 1362 “Sewing thread”
- ♦ polyester-and-cotton core-spun
- ♦ ticket No 80
- ♦ colour to be an acceptable match to the colour with which it is used

7. Workmanship

The warm jackets shall be:

- ♦ cut and made with first-class workmanship throughout
- ♦ of uniform and acceptable make, colour and finish

Shall be free from:

- ♦ defects, which affect their appearance or may affect their serviceability (or both)
- ♦ marks
- ♦ spots
- ♦ stains, incurred in the making-up

Seams and stitches shall be:

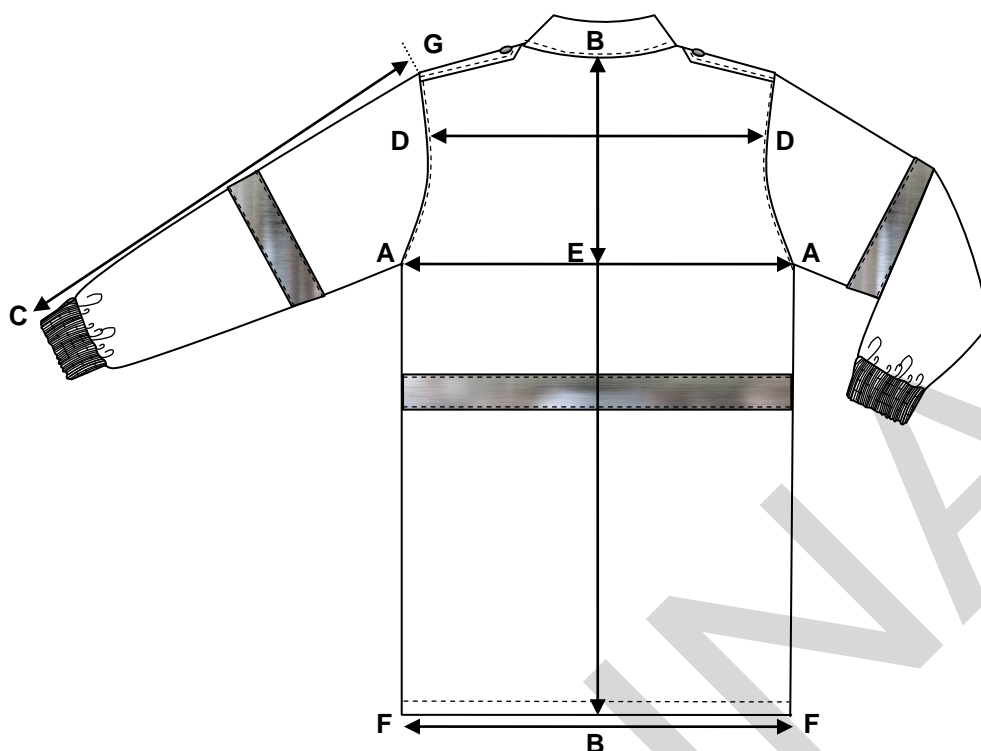
- ♦ smooth and uniform
- ♦ free from twists, peats and puckers
- ♦ sufficiently extensible to avoid seam cracking and undue shrinkage in use

Ends of sewing shall be:

- ♦ trimmed and loose threads removed
- ♦ back-tacked if unsecured

Doc No	Date	Responsibility	Version	Page
CSS 286.21 G156	June 2012	Transnet	V01.0	6 of 22

8. Sizes



Measuring point		Description
A – A	Chest Circumference	Measure at the base of the scye, with garment spread completely flat, front slide fastener fastened, and multiply by two.
B – B	Back length	Measure from the centre back neck seam to the bottom edge of the garment.
C – G	Sleeve length	Measure along the overarm of the sleeve, from the crown of the sleeve to the outer edge of the cuff.
D – D	Back width	Measure across the narrowest part of the back (back pitch position), from one sleeve insertion seam to the other.
B – E	Depth of scye	Measure from the centre back neck seam to the level of the base of the scye.
F – F	Bottom hem	Measure across the width of the bottom hem, with the slide fastener fastened and multiply by two.

Doc No	Date	Responsibility	Version	Page
CSS 286.21 G156	June 2012	Transnet	V01.0	7 of 22

Table 1 - Size chart

1	2	3	4	5	6
Size Designation	Nominal finished garment measurements, cm				
	Chest	Back length	Sleeve length	Back width	Bottom hem circumference
2X-Small 62/67	90	79	56	44	90
X-Small 72/77	100	81	58	46	100
Small 82/87	110	83	60	48	110
Medium 92/97	120	85	62	50	120
Large 102/107	130	87	64	52	130
X-Large 112/117	140	89	66	54	140
2X-Large 122/127	150	91	68	56	150
1) Based on the chest circumference, in centimetres, of the intended wearer.					

Doc No	Date	Responsibility	Version	Page
CSS 286.21 G156	June 2012	Transnet	V01.0	8 of 22

Table 1 - Size chart (continued)

1	2	3	4	5	6
Size Designation	Nominal finished garment measurements, cm				
	Chest	Back length	Sleeve length	Back width	Bottom hem circumference
3X-Large 132/137	160	93	70	58	160
4X-Large 142/147	170	95	71	60	170
5X-Large 152/157	180	97	72	62	180
6X-Large 162/167	190	99	73	64	190
Special Measurement					
1) Based on the chest circumference, in centimetres, of the intended wearer.					

Doc No	Date	Responsibility	Version	Page
CSS 286.21 G156	June 2012	Transnet	V01.0	9 of 22

9. Make

Illustrations are not to scale and for guidance only, and unless inconsistent with the text, all measurements are nominal.

9.1 Foreparts

9.1.1 General:

- ♦ be single breasted
- ♦ fasten with a slide fastener
- ♦ be cut with straight side seams
- ♦ have straight bottom hems
- ♦ be fully lined with lining
- ♦ be fully interlined with wadding
- ♦ centre front edges to be abutted (i.e. front edges of jacket to meet and conceal the slide fastener)

9.1.2 Forepart panels

Each forepart to:

- ♦ be cut with a horizontal seam and divided into two sections
 - top section
 - lower section
 - horizontal seam to be centrally positioned between the neck point and the bottom hem (see figure 4)
- ♦ be fitted with a stringer of a slide fastener
 - to extend from the gorge seam to 50 mm above the bottom hem
 - stringer to be sandwiched between the forepart and lining and sewn down with two rows of stitching
- ♦ be fitted with a strip of reflective tape that shall encircle the whole body of the garment (see 9.3)

9.1.2.1 Right forepart

- ♦ to be fitted with five male press stud sections in corresponding positions to the female sections on the storm flap
- ♦ **right top section:**
 - made from “Olive Green” outer material (See 6.1)
 - to be fitted with embroidery
 - the words “TRAIN CREW” to be embroidered with embroidery thread
 - colour of embroidery thread to be black
 - word to be in capital letters
 - length of word to be 65 mm
 - height of letters to be 6 mm
 - positioned in such a way that the two words shall be centred in the distance between the front edge and the sleeve insertion seam
 - top edge to be positioned in line with the top edge of the Transnet Logo on the left forepart
- ♦ **right lower section**
 - made from “Black” outer material” (see 6.1)
 - to be fitted with a side patch pocket

9.1.2.2 Left forepart

- ♦ to be fitted with a storm flap (see 9.2)
- ♦ **left top section:**
 - made from “Olive Green” outer material (See 6.1)
 - to be fitted with embroidery
 - the registered Transnet Logo to be embroidered with embroidery thread
 - colour of embroidery thread to be black

Doc No	Date	Responsibility	Version	Page
CSS 286.21 G156	June 2012	Transnet	V01.0	10 of 22

- dimensions to be as given in figure 3
- positioned in such a way that the logo is centred in the distance between the front edge and the sleeve insertion seam
- positioned from the neck point as given in figure 4 on size Large and graded proportionally on the smaller and larger sizes

◆ **left lower section**

- made from “Black” outer material” (see 6.1)
- to be fitted with a side patch pocket

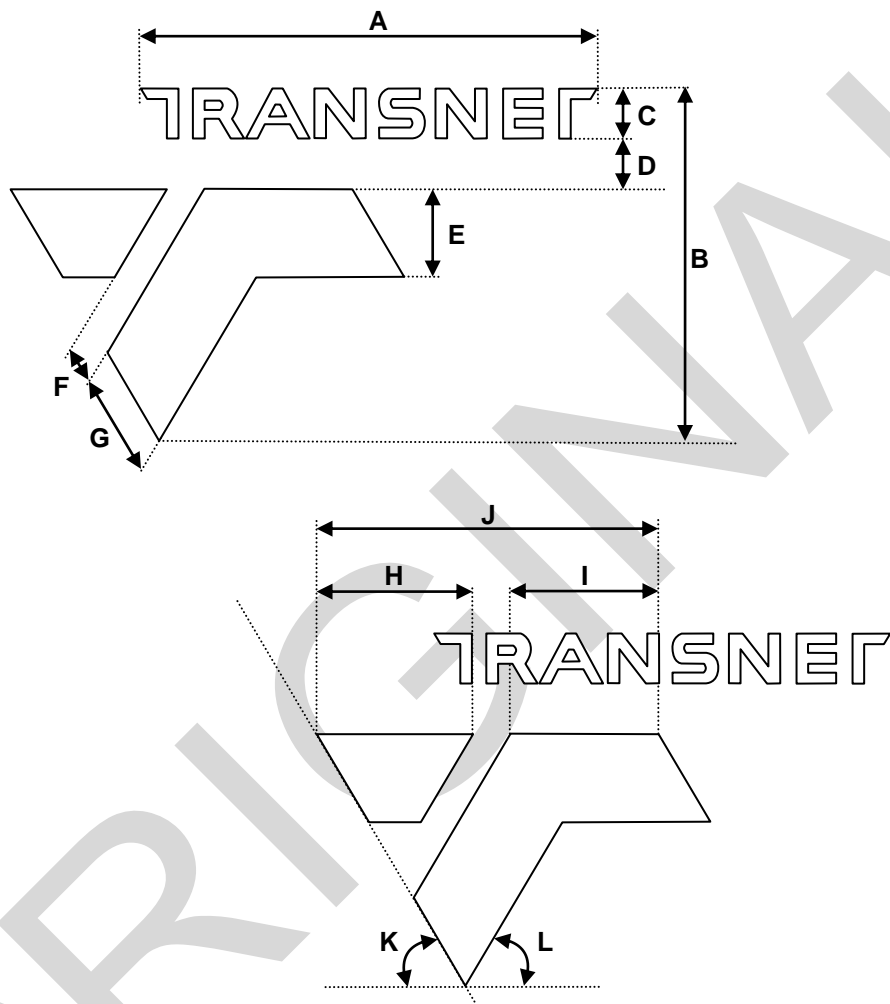


Figure 3 – Dimensions of Transnet logo

Figure No	Item	A	B	C	D	E	F	G
3		37 mm	32 mm	6 mm	6 mm	8 mm	2 mm	8 mm
	Item	H	I	J	K	L	-	-
		12 mm	12 mm	25 mm	60°	60°	-	-

Doc No	Date	Responsibility	Version	Page
CSS 286.21 G156	June 2012	Transnet	V01.0	11 of 22

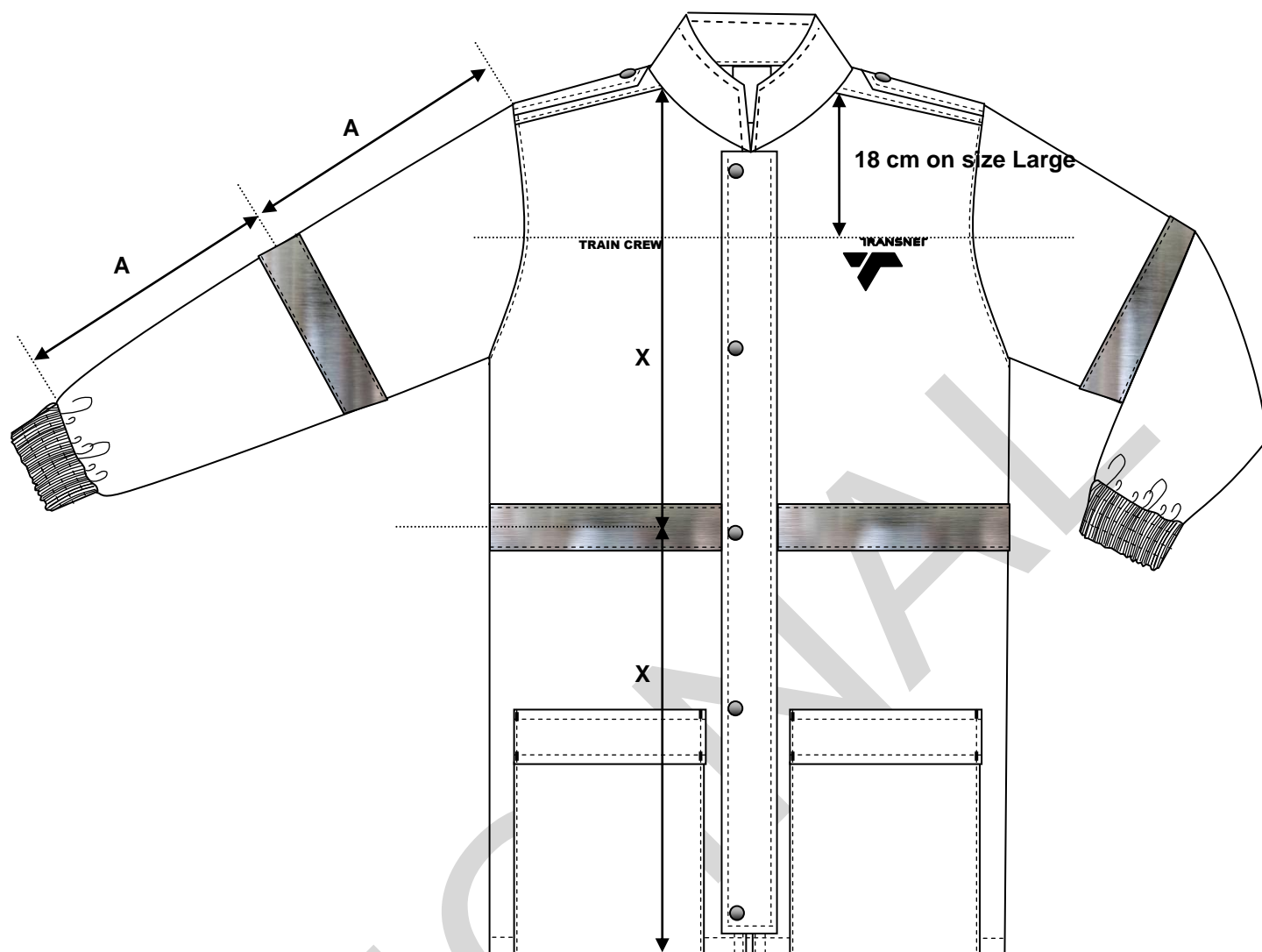


Figure 4 – Position of embroidery on size Large

9.2 Storm flap

- ♦ of outer material
- ♦ lined with outer material
- ♦ interlined with interlining
- ♦ sewn to the left forepart
- ♦ of finished width 75 mm
- ♦ to conceal the slide fastener front opening
- ♦ to extend from the gorge seam to 25 mm above the bottom hem
- ♦ edge-stitched 6 mm along all edges
- ♦ sewn down in such a way that the outer edge of the storm flap shall be positioned 25 mm from the centre front edge (excluding the stringer of the slide fastener)
- ♦ cut edge of storm flap to be sewn to the forepart, folded over and sewn down 6 mm from the folded edge
- ♦ fitted with five female press-studs
 - positioned 15 mm from the front free edge of the storm flap (centres)
 - top press-stud to be positioned 15 mm below the top edge of the storm flap (centres)
 - bottommost press-stud to be positioned 15 mm above the bottom edge of the storm flap (centres)
 - the remaining press-studs shall be equidistantly spaced between the topmost and bottommost press-studs

Doc No	Date	Responsibility	Version	Page
CSS 286.21 G156	June 2012	Transnet	V01.0	12 of 22

9.3 Reflective tape on body

- ♦ to encircle the whole body of the jacket
- ♦ cut ends to be sewn in with the centre front edges of the jacket
- ♦ attached by means of 2 mm edge-stitchings along the top and bottom edges of the tape
- ♦ tape to be centred over the horizontal seam of the foreparts and back

9.4 Side pockets and flaps

9.4.1 Pockets

- ♦ each lower forepart section shall be fitted with a side pocket
- ♦ of "Black" outer material
- ♦ to be a patch pocket
- ♦ bottom edge of pocket to be sewn in with the bottom hem of the jacket
- ♦ pocket mouth hem to be of finished depth 20 mm
- ♦ pocket mouth ends to be bar-tacked
- ♦ side edges to be folded in 10 mm and edge-stitched 2 mm
- ♦ of finished width and depth 20 cm
- ♦ positioned 55 mm from the front edge of size designation Large and graded proportionally on the other sizes (where required)

9.4.2 Pocket flaps

- ♦ each pocket shall have a pocket flap
- ♦ of "Black" outer material
- ♦ to be of double folded outer material
- ♦ to be of finished depth 60 mm
- ♦ to be the same width as specified for the pocket
- ♦ bottom edge to be edge-stitched 6 mm
- ♦ top edge to be sewn to the forepart, folded over and sewn down 7 mm from the folded edge
- ♦ side edges to be sewn down onto the forepart and pocket
- ♦ flap to be positioned in such a way that it shall overlap the mouth opening by 40 mm
- ♦ bar-tacked at the top and bottom outer edges

NOTE: *If the pockets do not fit on all sizes, deviations shall be as agreed upon between the purchaser and supplier.*

9.5 Back

- ♦ be cut with a horizontal seam and divided into two sections
 - top section
 - lower section
- horizontal seam to be a continuation of the horizontal seam on the foreparts
- ♦ be fitted with a strip of reflective tape that shall be a continuation of the tape on the foreparts (see 9.3)
- ♦ fully lined with lining and fully interlined with wadding

9.5.1 Top back section

- ♦ to be made from "Olive green" outer material
- ♦ cut in such a way that the shoulder seam shall be positioned 50 mm forward of the natural shoulder line and top-stitched 3 mm
- ♦ fitted with a male section of a press-stud fastener in a corresponding position to the female section on the shoulder straps

Doc No	Date	Responsibility	Version	Page
CSS 286.21 G156	June 2012	Transnet	V01.0	13 of 22

9.5.2 Lower back section

- ♦ made from “Black” outer material

9.6 Collar

- ♦ a one-piece, turned-down collar
- ♦ to be made from “Olive green” outer material
- ♦ lined with “Olive Green” outer material
- ♦ interlined with interlining and wadding
- ♦ constructed in such a way that the:
 - collar shall be of finished depth 95 mm at the centre back
 - collar shall be of finished depth 95 mm at the points
- ♦ such that it shall extend from the right front edge to the left front edge (to meet at centre front)
- ♦ edge-stitched 10 mm along the free edges

9.7 Sleeves

- ♦ one-piece type sleeves
- ♦ set in sleeves
- ♦ depth of scye to measure 34 cm on size designation Large and graded proportionally on the smaller and larger sizes
- ♦ the underarm sleeve length shall measure 57 cm on size designation Large and graded proportionally on smaller and larger sizes (measure along the underarm seam from the base of the scye to the outer edge of the cuff)
- ♦ fully lined with lining and fully interlined with wadding
- ♦ to be cut in two sections (see figure 4)
 - upper section to be made from “Olive Green” outer material
 - lower sections to be made from “Black” outer material
- ♦ a strip of reflective tape shall encircle the sleeve and shall be centrally positioned over the horizontal seam
 - cut edges shall be sewn in with the underarm seam
 - attached by means of a 2 mm edge-stitching
- ♦ sleeve insertion seams to be top-stitched 3 mm
- ♦ to have sewn-on cuffs
 - of double folded outer material (“Black”)
 - of finished width 45 mm
 - fitted with elastic webbing and ruched with three rows of equidistantly spaced stitchings
 - relaxed measurement to be such that it shall fit comfortably around the wrist of the intended wearer

9.8 Shoulder straps

- ♦ of outer material
- ♦ lined with outer material
- ♦ interlined with interlining
- ♦ have a mitred point
- ♦ top stitched 6 mm around the free edges
- ♦ mitre to be of finished length 25 mm
- ♦ of minimum length 12 cm (measured to base of mitre to sleeve insertion seam)
- ♦ of width 50 mm at the sleeve end tapering to 40 mm at the base of the mitre
- ♦ wide end of the strap sewn in with the sleeve-to-shoulder seam
- ♦ positioned in such a way that the front edge of the shoulder strap is 10 mm above the shoulder seam and parallel to the shoulder seam
- ♦ fitted with a female section press-stud
 - positioned at the base of the mitre (centre)

Doc No	Date	Responsibility	Version	Page
CSS 286.21 G156	June 2012	Transnet	V01.0	14 of 22

9.9 Lining

- ♦ a layer of lining fabric and a layer of wadding that are quilted by vertical rows of stitching 10 cm apart
- ♦ front, back and sleeves to be fully lined and interlined with wadding as given above

9.10 Bottom hem

- ♦ to be folded to the inside and of finished width 20 mm

10. Stitches, seams and stitching

10.1 Stitches

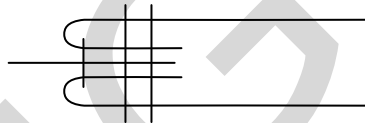
Sewing: lock stitch or safety stitch

Overlocking stitch: three of four thread overlocking stitch

10.2 Seams

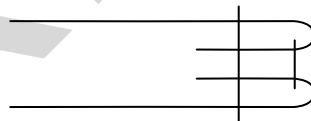
Seams to be least 10 mm wide (unless otherwise stated)

Attaching front slide fastener: seam type SSq-3



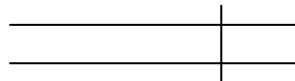
Form seam Type SSa-1, using three or more plies of material. Then turn each outer ply back at the seam and seam with the appropriate number of rows of stitches.

Free edges of collar, storm flap and shoulder straps: seam type SSe-2



Form seam Type SSa-1, using two plies of material. Then turn back each ply at the seam and seam through the turned edges with the appropriate number of rows of stitches.

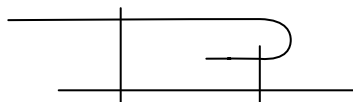
Main seams: seam type SSa-1



Superimpose two or more plies of material and seam with one row of stitches positioned at the specific distance(s) from the aligned edges.

Doc No	Date	Responsibility	Version	Page
CSS 286.21 G156	June 2012	Transnet	V01.0	15 of 22

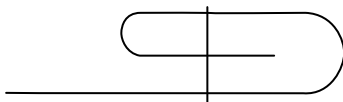
Attaching the storm flap and top edge of pocket flaps: seam type LSs-2



So superimpose two plies of material that their edges are the specified distance apart, and seam with one row of stitches at the specified distance from the edge of the top ply. Then turn the top ply back at the seam and seam with one row of stitches through the top and bottom plies.

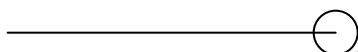
10.3 Stitchings

Bottom hem and pocket mouth hems: stitching type EFb



Turn in the specified width at the edge of a ply of material, fold back the turned edge, and stitch the turned-in and folded portion with the appropriate number of rows of stitches.

All exposed raw edges: stitching type EFd



Stitch over the edge of a ply of material with one row of stitches.

10.4 Number of stitches

seaming and top stitching: 40 ± 4 per 10 cm

overlocking: 36 ± 4 per 10 cm

bar tracks: 12 ± 1 per 1 cm

11. Care-labelling and marking

11.1 Label properties

All labels shall:

- ♦ be white woven rayon labels that are printed
- ♦ comply with SANS 1309 "Printed labels for textiles"
 - information to be in legible and indelible block letters of height at least 3 mm
- ♦ permanently secured
- ♦ be such that they outlast the garments (including the markings)

Doc No	Date	Responsibility	Version	Page
CSS 286.21 G156	June 2012	Transnet	V01.0	16 of 22

11.2 Care-labelling

- ♦ each garment shall have a label that provides correct and appropriate care instructions (in words and symbols, in accordance with SANS10011 “Care-labelling of textile piece-goods, textile articles and clothing”)
- ♦ each label to include the composition of the main fabric in accordance with the requirements of SANS 10235 “Fibre-content labelling of textiles and textile products”

11.3 Marking

- ♦ Each jacket shall have, sewn in with the centre back collar seam on the inside, a label that provides the following information:
 - the word “TRANSNET”
 - the manufacturer's name or trade mark or both
 - the item number
 - the size designation
 - the spec number
 - the fibre composition of the body fabric
 - the country of origin
 - the year of manufacture
 - the VAT number of the contractor

TRANSNET

Manufacturer's name

ITEM NO:

35/000000

SIZE: LARGE

Spec No: CSS 286.21 G156

65% Polyester/ 35 % Cotton

MADE IN SOUTH AFRICA

2012

VAT No: 4679312

Figure 5 – Example of information on label

12. Packaging and marking of packaging

12.1 Packing

12.1.1 The jacket shall be:

- ♦ delivered in a commercially dry condition

Doc No	Date	Responsibility	Version	Page
CSS 286.21 G156	June 2012	Transnet	V01.0	17 of 22

- ♦ so packed that they will not be damaged in transit or in storage
- ♦ neatly folded and individually packed in a plastics envelope of suitable size and shape
- ♦ unless otherwise specified in the order or contract, acceptably packed for transportation in acceptable bulk containers

12.1.2 Jacket:

- ♦ of the same size designation to be packed together in a bulk container (unless quantities ordered are such that packing together of the same size is not justified)
- ♦ of different size designations may also be packed together to accommodate the last part of an order or contract

12.2 Marking

12.2.1 Envelopes

To be as specified in CSS 286.21 LAB/1.

12.2.2 Bulk containers

To be as specified in CSS 286.21 PAC/1.

12.3 Additional marking

When so required by the Transnet, jacket, envelopes or containers (or any combination of these) to bear information additional to that specified above.

13. Normative References

The following documents contain provisions which, through reference in this text, constitute provisions of this specification. All documents are subject to revision and, since any reference to a document is deemed to be a reference to the latest edition of that document, parties to agreements based on this specification are encouraged to take steps to ensure the use of the most recent editions of the documents indicated below. Information on currently valid national, international and CKS documents may be obtained from Standards South Africa*.

CKS 627, *Fusible interlinings.*

CSS 286.21 LAB/1, *Labelling.*

CSS 286.21 PAC/1, *Packaging.*

SANS 79, *Textiles - Mass per unit area of conditioned fabrics.*

SANS 142, *Narrow elastic fabrics and strip.*

SANS 1309, *Printed labels for textiles.*

SANS 1362, *Sewing threads.*

SANS 1387-2, *Woven cotton and similar apparel fabrics – Part 2: Polyester-and-cotton workwear fabrics.*

* Standards South Africa: Tel. +27 (0) 12 4287911

Doc No	Date	Responsibility	Version	Page
CSS 286.21 G156	June 2012	Transnet	V01.0	18 of 22

SANS 1387-7, *Woven cotton and similar apparel fabrics – Part 7: Jacket linings.*

SANS 1387-11, *Woven cotton and similar apparel fabrics – Part 11: Polyester-and-cellulosic raincoat fabrics.*

SANS 1822, *Slide fasteners.*

SANS 1833-1/ISO 1833-1, *Textiles – Quantitative chemical analysis – Part 1: General principles of testing.*

SANS 1833-11/ISO 1833-11, *Textiles – Quantitative chemical analysis – Part 11: Mixtures of cellulose and polyester fibres (method using sulphuric acid).*

SANS 5278, *Sewing stitches per unit length.*

SANS 50471, *High visibility warning clothing for professional use – test methods and requirements.*

SANS 10011, *Care-labelling of textiles and clothing.*

SANS 10235, *Fibre content labelling of textiles and textile products.*

SANS 10371, *Terms and definitions for clothing.*

Doc No	Date	Responsibility	Version	Page
CSS 286.21 G156	June 2012	Transnet	V01.0	19 of 22

ANNEX A

(Normative)

Special conditions of tender

A-1 GENERAL

- A-1.1** Unless otherwise stated, Transnet (or an organization deputed by it), shall be the inspecting authority.
- A-1.2** Three pre-production sample jackets, shall have been inspected, tested and approved by the inspecting authority before bulk production is commenced. Each one of these samples shall be accompanied by a trim chart containing a sample of each component material (as given in section 6) and the relevant certificates. It shall be the duty of the manufacturer to give adequate notice to the inspecting authority of the availability of these samples.
- A-1.3** The jackets shall be subject to inspection during the course of manufacture. The inspector shall, during normal working hours, be given all reasonable facilities for carrying out his duties and shall have the right of entry into the contractor's factory and the factory or works of any subcontractor where work on jackets supplied to this specification may be in progress
- A-1.4** The contractor shall inspect the finished jackets for compliance with the specification before submitting them to the inspecting authority for final inspection.
- A-1.5** Before acceptance, the jackets shall have been inspected and tested by the inspecting authority and found to comply with the requirements of the specification.

A-2 DOCUMENTATION

One container of each consignment shall be marked "DOCUMENTS" and in addition to the jackets, shall contain the following:

- a) The packaging slip or delivery note;
- b) where applicable the inspection certificate(s);
- c) a copy of the invoice containing the following information:
 - the order number
 - the financial authority number
 - a full description of the consignment, i.e. Item number, quantity, etc

Doc No	Date	Responsibility	Version	Page
CSS 286.21 G156	June 2012	Transnet	V01.0	20 of 22

ANNEX B
(Normative)
CKS 129 Colours

Due to the fact that colours can change over a period of time, any colour standard which has been registered for a period of SEVEN YEARS or more shall be considered obsolete. These standards shall then be allocated an archived status (as opposed to current status) and re-registration shall be required.

A. The following scenarios require a submission of three metres of fabric and/or a reel of embroidery thread from the successful tenderer:

1. A colour standard is archived.
2. First time registration is required (CKS 129 colour number does not exist).
3. Colour swatch stock at the SABS is no longer available.

B. Requirements for the submission of fabric as identified in A:

1. The colour shall be as agreed upon between Transnet and the successful tenderer.
2. The fabric and embroidery thread shall be used to make new colour swatches which shall be the responsibility of the SABS.
3. The cost of the three metres of fabric and embroidery thread shall be incorporated in the relevant tender submission.

Doc No	Date	Responsibility	Version	Page
CSS 286.21 G156	June 2012	Transnet	V01.0	21 of 22

HISTORY SHEET				
Version	DATE	AMENDMENTS/HISTORY	CHECKED	
			NAME	INIT.
1.0	June 2012	First release		

ORIGINAL

Doc No	Date	Responsibility	Version	Page
CSS 286.21 G156	June 2012	Transnet	V01.0	22 of 22

JACKET, WINDBREAKER

Garment Reference item number 35/161824

1. Scope

This specification covers the material and make of windbreakers intended for personnel employed by Transnet Limited.

NOTES

1) The following requirements will be specified in tender invitations and in each order or contract:

a) The size designation(s) required (see 4.4).

b) The packing, if other than as specified (see 5.1)

c) The marking, if other than as specified (see 5.3)

d) Additional marking, if required

2) Special conditions of tender (which cover the conditions of acceptance of the garments) are given in annex A.

2. Normative References

The following standards contain provisions which, through reference in this text, constitute provisions of the specification. All standards are subject to revision and, since any reference to a standard is deemed to be a reference to the latest edition of that standard, parties to agreements based on this specification are encouraged to take steps to ensure the use of the most recent editions of the standards listed below. Information on currently valid national and international standards may be obtained from the South African Bureau of Standards.

CKS 129	Colours for textiles.
CKS 574	Slide (zip) fasteners.
CKS 627	Fusible interlinings.
SABS 432	Inedible marking ink for textile fabrics.
SABS 1309	Printed labels for textiles
SABS 1360-1	Size designation of clothes-----Part: men's and boy's Outerwear, garments.
SABS 1362,	Sewing threads.
SABS 1387-7	Woven cotton and similar apparel fabrics-----Part 7: jacket linings.
SABS 011	Care-labeling of textiles and clothing
SABS 0101,	Standard nomenclature for stitches, seams, and stitching's.
SABS 0188,	Standard methods of garment measurement.

3. Definitions

For this specification, the following definitions apply:

3.1 acceptable: Acceptable to Transnet Limited.

3.2 nominal: Subject to the tolerances normal to good manufacturing practice.

4. Requirements

4.1 Materials

NOTE -The outer material a polyester and cotton field dress fabric that complies with the requirements for type FD74 of CKS 488 and of a colour that is an acceptable match to colour No. 34c "NAVY Blue" of CKS 129 will be supplied by Transnet Limited.

4.1.1 General

The materials specified in 4.1.2 to 4.1.9 (inclusive) all a colour that is an acceptable match to that of the outer material, shall be supplied and used by the manufacturer.

4.1.2 Elastic webbing

A woven elastic webbing with a cotton-and rubber warp and a cotton or a polyester welt. The webbing should be of width of at least 55 mm and have a stretch of at least 120%.

4.1.3 Lining

A polyester lining that complies with the requirements for type L61p of SABS 1387-part 7.

4.1.4 Interlining

A fusible interlining that complies with the requirements of CKS 627 for interlinings that are suitable for use in garments that may be dry-cleaned or washed or both.

NOTE – The selection of interlining of appropriate mass per unit area shall be determined by consultation with the suppliers of the interlining.

5.3.1 Wadding

A polyester wadding of nominal mass per area 65 g/m².

4.1.6 Interlocking slide fasteners

One –way open-end slide fasteners with molded synthetic elements that comply with the requirements for type C of CKS 574.

4.1.7 Press-studs

Press-studs of an intrinsically corrosion-resistant base gun metal of the male and female type. The inside diameter of the hole in the female section shall be at least 5 mm.

4.1.9 Threads

The threads shall comply with the relevant requirements of SABS 1362. They shall be as follows:

- a) **main seaming and top stitching thread:** a polyester-and-cotton core-spun thread, or staple thread, ticket no.80 (in both cases)

4.2 Workmanship

The jacket shall be cut and made with first-class workmanship throughout and shall be free from defects that affect their appearance or may affect their serviceability (or both), and from marks, spots and stains incurred in the making-up. All seams shall be smooth and all stitching uniform and free from twists, pleats and puckers and shall be sufficiently extensible to obviate seam cracking and undue shrinkage in use. All ends of sewing that are not secured in seams or other sewing shall be adequately back-tacked. All ends of sewing shall have been trimmed and loose threads removed. The jackets shall be of uniform and acceptable make, colour and finish, and the matching of the shades of the component parts of jackets shall be such as to be acceptable.

4.3 Style

The jacket shall be a storm flap, and a slide fastener fastening, a laid-on press-stud fly flap and fly catch, inner and outer collar, two breast pockets with flaps. Each forepart shall have two panels.

The sleeves shall have elasticized cuffs The jackets shall have a fully elasticized waistband. The body and sleeves shall be fully lined with body lining (see 4.1.3) and inter lined with wadding (see 4.1.5).

4.4 Sizes

The jackets shall be supplied in one (or more) of the size designations given in column 1 of table 1, as specified in the order or contract, their measurements determined in accordance with SABS 0188, shall conform to the relevant values given in columns 2 to 7. The patterns shall conform to the specification and to the sealed sample and shall be drafted by the manufacturer.

Table 1 Size chart

1	2	3	4	5	6	7
Size designation 1)	Nominal finished garment measurements, cm					
	Chest	Back Length	Waistband Relaxed.	Waistband extended	Sleeve Length 2)	Cuff Circumference relaxed
62-67 (XXS)	88	67	59	89	46	16
72-77 (XS)	98	70	69	98	46	16
8287 (S)	108	73	79	108	48	16
88-97(M)	118	75	89	118	50	16
97-102 (L)	128	77	99	128	52	20
108-117 (XL)	138	79	109	138	54	20
122-127 (2XL)	148	79	119	148	56	24
128-137 (3XL)	158	79	129	158	58	24
138147 (4XL)	168	82	139	168	60	26
148157 (5XL)	178	82	149	179	62	26
158167 (5XL)	188	82	158	188	64	26
162167 (6XL)	198	82	169	198	66	26
1) Based on the waist girth of the intended wearer						
2) Underarm sleeve measurement						

1) Sealed samples are held by, and may be viewed at, the Clothing Manager, Langlaagte.

4.5 Make

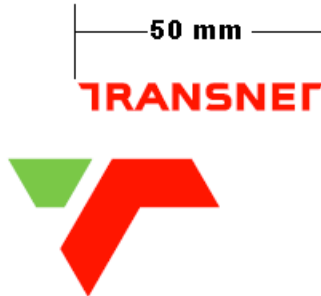
NOTE - Unless inconsistent with the text, all measurements are nominal.

4.5.1 Fronts

Each front shall consist of two shaped panels with breast pockets and flaps. The outer panel and front sleeve panel in one piece. The left (when worn) forepart shall have seven female press studs and a slide fastener catch. The left and right forepart shall have a fly flap with seven male press studs. Sandwiched between the outer front edge of fly catch 80 mm wide and lining seam on the front shall be the stringer of the slide fastener (see 4.1.6). There shall be seven equidistantly spaced press studs (see 4.1.7), 20 mm from the edge of the fronts.

4.5.2 Logo

On the left forepart shall be the appropriate logo where applicable screen printed in white or embroidered in an acceptable thread (see 4.1.10.2). The, Transnet, logo embroidered in white



4.5.3 Pockets

Breast pocket: Each fore part shall a square pleated pocket. The edges of the pocket shall be parallel to the front edge. Each end of each pocket mouth shall be securely tacked with a vertical box tack of finished width and length 3mm and 15 mm respectively. The pocket shall be of width 140 cm and depth 140 cm. Each pocket shall have a vertical box pleat of finished width 30 mm at the center of the pocket. With a press-stud centrally positioned.

4.5.4 Pocket flaps

The breast pocket flap shall be mitred s and shall be lined with outer material. The finished depth of flap shall be 55 mm on the edge and 60 mm in the center. The length of the pocket flap shall be such that the flap covers the full width of the pocket mouth. There shall be a 10 mm gap between the top of the pocket mouth and the stitching down of the flap. Each flap shall have, in the center, 15 mm from miter edge a press-stud. The flap shall be top - stitched 7 mm from the free edges.

4.5.5 Back

The back shall be a cut in one piece.

4.5.5 Sleeves

The sleeves shall be cut in one-piece, set-in sleeve, which are seamed under the arm. The sleeves shall be finished with a cuff of double folded outer material and shall contain elastic webbing (see 4.1.2). The cuffs shall be of finished width 45 mm and shall be rouches with three equidistant rows of stitches. The circumference of the cuffs shall conform to the relevant values given in size chart.

4.5.6 Waistband

The waistband shall be made in three sections. Two front sections shall be grown on and shall be finished width 45 mm. These sections shall be folded along the bottom line to form a lining and shall extend 8 cm from the front edge to the start of the third (back) section of the waistband. The back section extending to the front of the waistband shall be of outer material and shall contain elastic webbing and shall be of finished width 45 mm and rouches with three equidistant rows of stitches. The circumference of the finished waistband shall conform to the relevant value given in columns in the size chart.

4.5.7 Collars

The outer collar shall be stand collar cut in one section. The collar shall be of outer material lined width outer material and interlined with wadding (see 4.1.5). The finished width of the collar shall be 100 mm and extend to the center front and the center front and the free edges shall be topstitched 7 mm from the edge. The inner collar shall be a stand collar cut in one section and shall be lined with outer material. The finished width of the collar shall be 100 mm. The collar shall accommodate the press – studs' position. Free edges of collar shall be topstitched 7 mm from the edge.

4.5.8 Shoulder straps

The shoulder straps shall be mitered straps, of outer fabric and lined with outer fabric of finished width 50 mm at the shoulder and tapering to 40 mm at the buttonhole end, and 14 cm long. The edges of the straps shall be top stitched 6 mm from the edge.

4.5.9 Buttons

Two-hole dope dyed plastic buttons of nominal diameter 14 mm of a colour that is an acceptable match to that of the outer fabric.

4.6 Bottoms**4.6 Stitches, seams, and stitching's****4.6.1 General**

All sewing shall be in accordance with SABS 0101.

4.6.2 Stitches

The stitches shall be as follows:

- a) side seams, sleeves, and sleeve insertion seams: any of stitches type 515 to 519 and
- b) all other stitching: stitch type 301.

4.6.3 Seams

Seams shall be as follows:

- a) side seams, sleeves seams: seam type Ssa of width at least 10 mm.
- b) breast pocket to jacket: seam type Lsd-1
- c) flap to front seam type Lss-2
- d) over-arm sleeve seam: seam type LSBm-3.
- e) collar: seam type Ssae-3:
- f) cuffs: seam type Sse-2

4.6.4. Stitching's

The stitching shall be as follows:

- a) Hems: stitching type Efd-1.
- b) fly flap, fly catch: seam type Efa-1

4.6.5 Number of stitches

The number of stitches shall be as follows:

- a) Seams: 40 ± 4 per 10 cm.
- b) Buttons: 12 ± 1 per button.
- c) Buttonholes: 12 ± 1 per cm; and

5 Packing, care-labeling, and marking**5.3 Packing**

The jacket shall be delivered in a clean, dry, and pressed condition and shall be so packed that they will not be damaged in transit or storage. Each jacket shall be neatly folded and packed in a plastic envelope of suitable size and shape and then, unless otherwise specified in the order or contract, packed for transit (in units of ten) in acceptable bulk containers. Only jackets of the same item number and size shall be packed together in bulk containers (unless quantities ordered are such that packing of the same item number and size only is not justified). Jackets of different item numbers and sizes may also be pack together to accommodate the last part of an order or contract.

5.4 Care-labeling

Each jacket shall have a woven or printed label that is permanently secured and that provides (in accordance with SABS 011) correct and appropriate care instructions. Printed labels shall comply with the requirements of SABS 1309. All care-labels and their marking shall be such that they outlast the garments.

5.3 Marking**5.3.1 Jackets**

Each jacket shall have a woven fabric label that complies with the requirements of SABS 1309 securely sewn to the inside of the back neck. The label shall provide the following information printed in legible and inedible block letters of height at least 3 mm:

- 1) The manufacturer's name or trademark or both.
- 2) the size designation.
- 3) the year of manufacture.
- 4) the item number; and
- 5) the composition of the fabric.

5.3.2 Plastic envelopes

Each envelope shall be clearly marked with the size designation (as given in column 1 of table 1) and the item number of the contents.

5.3.3 Bulk containers

Each bulk container shall have a label securely attached to the outside. This label shall be visible when the containers are stacked and shall provide the following information:

- a) The manufacturer's name or trademark or both.
- b) the designation, i.e., jackets (windbreakers)
- c) the size designation.
- d) the quantity.
- e) the package number.
- f) the year of manufacture; and
- g) the item number

5.4 Additional marking

When so required by Transnet Limited, jackets or envelopes or containers, or any combination of these three, shall bear information additional to that specification in 5.3.

Annex A
(normative)

Special conditions of tender

A-1 Unless otherwise stated, Transnet Limited (or an officer or organization deputed by it), shall be the inspecting authority.

A-2 Sample submission will be according to the RFP/ RFQ requirements.

A-3 The Jackets shall be subject to inspection during manufacture. The inspector shall, during normal working hours, be given all reasonable facilities for carrying out his duties and shall have the right of entry into the contractor's factory and the factory or works of any subcontractor where work on jackets supplied to this specification may be in progress.

A-4 The contractor shall inspect the finished jackets for compliance with the specification before submitting them to the inspecting authority for final inspection.

A-5 Before acceptance, the jackets shall have been inspected and tested by the inspecting authority and found to comply with the requirements of the specification.

HISTORY SHEET			
REV/NO	DATE	AMENDMENT / HISTORY	REVISED BY
1	April 2015	REVISION	C. DU PLOOY
2	September 2018	REVISION	C. DU PLOOY

SHIRT, UNISEX (SUPERVISOR)

RNC (TWO TONE, ORANGE & NAVY)

1 Scope

This specification covers the materials and make of short sleeved workwear shirts for personnel of Transnet Limited.

NOTES

- 1) The following requirements will be specified in tender invitations and in each order or contract:
 - a) the size(s) required (see 4.4).
- 2) Special conditions of tender (that cover the conditions of acceptance of the workwear shirts) are given in annex A.

2 Normative references

The following standards contain provisions which, through reference in this text, constitute provisions of this specification. All standards are subject to revision and, since any reference to a standard is deemed to be a reference to the latest edition of that standard, parties to agreements based on this specification are encouraged to take steps to ensure the use of the most recent editions of the standards listed below. Information on currently valid national and international standards may be obtained from the South African Bureau of Standards.

SANS 1309, *Printed labels for textiles*.

SANS 1362, *Sewing threads*.

SANS 1387-4, *Woven cotton, and similar apparel fabrics – Part 4: Cotton jean and drill fabrics*.

SANS 1387-6, *Woven cotton, and similar apparel fabrics – Part 6: Denim fabrics*.

SANS 1387-9, *Woven cotton, and similar apparel fabrics – Part 9: Polyester-and-cotton shirt fabrics*.

SANS 10004, *Terms and definitions for textiles and textile merchandise*.

SANS 10011, *Care-labelling of textile piece-goods, textile articles and clothing*.

SANS 10101, *Standard nomenclature for stitches, seams, and stitching's*.

SANS 10188, *Standard methods of garment measurement*.

SANS 10235, *Fibre-content labelling of textiles and textile products*.

SANS 10371, *Terms, and definitions for clothing*.

SANS 1457, "Plastic Buttons"

3 Definitions

For the purposes of this specification, the definitions given in SANS 10371 ("Terms and definitions for clothing" and the following shall apply:

3.1 acceptable: Acceptable to Transnet Limited.

3.2 nominal: Subject to the tolerances normal to good manufacturing practice.

2.3 SANS: South African National Standard

4.1 Materials

4.1.1 General

The materials specified in 4.1.2 to 4.1.6 shall be supplied and used by the manufacturer. The colour of the stay tape and the sewing thread shall be an acceptable match to the colour of the knitted fabric.

4.1.2 Outer material

The outer material shall be polyester / cotton fabric that complies with the requirements for

type PC 69 (205g/m²) of SANS 1387 and shall be of a colour that is an acceptable match to colour No. 232c "Transnet Orange" of CKS 129 and the Navy No. 2105c 1997/ of CKS 129

4.1.3 Interlining

The interlining shall be an acceptable fusible interlining that is suitable for use in shirts that may be washed. The selection of the appropriate type and mass per unit area shall be determined by consultation with the manufacturer of the interlining.

4.1.4 Collar stiffeners

Stiffeners shall be of an acceptable plastic material and the length, width and thickness shall be such as to be acceptable.

4.1.5 Buttons

The buttons shall be shirt type four-hole dope-dyed polyester buttons, nominal size 12mm. Colour to be white.

4.1.6 Sewing threads

Threads shall comply with the relevant requirements of SANS 1362, and shall be as follows:

- a) **sewing thread:** a polyester-and-cotton core-spun thread, ticket No. 120; and
- b) **overlocking thread:** crimp-textured polyester thread, ticket No. 140 or a crimp-textured polyamide thread, ticket No. 160.

4.1.7 Reflective Tape

Reflective silver tape of nominal width 20 mm that complies with the relevant requirements for class 2 retro-reflective material of SANS 50471 "High visibility warning clothing for professional use – test methods and requirements.

4.1.8 Embroidery thread

An acceptable 100% Viscose machine embroidery thread shall be used.

4.2 Workmanship

The shirts shall be cut and made with first-class workmanship throughout and shall be free from defects that affect their appearance or their serviceability (or both), and from marks, spots and stains incurred in the making up. Seams shall be smooth and all stitching uniform. Seams and stitching shall be free from twists, pleats and puckers and shall be sufficiently extensible to obviate seam cracking and undue shrinkage in use. All ends of sewing that are not secured in seams or in other sewing shall be adequately back-tacked. All ends of sewing shall have been trimmed and loose threads removed. A shirt shall be of uniform and acceptable make, colour and finish, and the matching of the shades of the component parts of a shirt shall be such as to be acceptable.

Note: The illustrations are not to scale and are for guidance only



4.3 Style

The shirt shall be of the jacket type shirt with a closed neck, with fronts with seven buttons fastening. The forepart shall have a horizontal yoke seam that is covered with a strip of reflective tape. Each forepart and back shall consist of two contrasting colours. The back panels shall have a horizontal yoke seam that shall be covered with a strip of reflective tape that extends onto the short sleeves. The breast pockets shall be of contrasting colour. The breast pocket flaps shall be inserted in the horizontal yoke seam. The shirt shall have two -piece contrasting colour short sleeve with plain cuffs.

4.4 Sizes

The shirts shall be supplied in the size as given in column 1 of table 1, as specified in the order or contract and shall conform with the appropriate values given in columns "Nominal finished garment measurements"

Table 1 - Size chart

1	2	3	4	5	7
Size Designation (1)	Nominal Finished garment Measurements, cm				
	Chest	Back Length	Sleeve Length (2)	Back width (3)	Depth of Scye (4)
62-71 (XXS)	85	75	11	41	25
72-81 (XS)	95	77	12	43	27
82-91 (S)	105	79	13	45	28
92-101 (M)	110	81	14	47	29
102-111 (L)	115	83	15	49	30
112-121 (XL)	125	85	16	51	31
122-131 (2XL)	135	87	17	53	32
132-141 (3XL)	145	89	18	55	33
142-151 (4XL)	155	91	19	57	34
152-161 (5XL)	175	93	20	59	35
(1) Based in accordance with SABS 1360-6, on the girth, in centimeters, of the intended, wearer.					
(2) Measured at the underarm to the end of cuff					
(3) For shirts without a yoke, measure at the mid-point of the scye					
(4) Measured from the center back neck, to the level of the bottom of the scye					

4.5 Make

NOTE Unless inconsistent with the text, all measurements are nominal.

4.5.1 Fronts

Closed neck: The fronts shall have facings, of width 45 mm. In addition to a buttonhole in the collar stand, the left front shall have six concealed buttonholes, and the right front shall have the same number of buttons correspondingly positioned. Each front shall have a patch pocket with a flap.

4.5.2 Front opening

Right front: To be fitted with seven properly secured buttons in corresponding positions to the buttonholes on the left front, with a facing of finished width 30 mm. Facing to be overlapped. The facing shall be fitted with an additional spare button.

Left front: The left front shall be constructed in such a way that it incorporates a concealed buttonhole stand and facing that shall be sewn 30 mm from front edge. The facing shall be inserted into the collar seam. Facing shall be overlapped along the cut edge. The buttonhole stand shall be of finished width of 35 mm. Buttonholes to be barred at each end. The buttonholes to be spaced at 11 cm intervals with exception of the top button to be 90mm from the one in the collar. Buttonholes to be positioned 15 mm from the edge of the buttonhole stand.

4.5.3 Pockets

The two-tone patch pockets shall have a mouth opening of width 130 mm. The edges of the pocket shall be turned in 15 mm and stitched down 2mm from edge. The front edges of each pocket shall be parallel to the front edge of the shirt. Each end of each pocket mouth shall be acceptably tacked with a vertical box tack (or bar tack) of finished length 10 mm. On the smaller

sizes, the finished pocket shall be of minimum width 12 cm and minimum depth 14 cm. On the larger sizes of shirts, the pockets shall be of width 14 cm and depth 15 cm. The pockets shall be plain pockets with blunted corners. The pocket shall have a hook & loop closure (Velcro) positioned in the center of the pocket. The male section shall be on the pocket and the female section on the flap. Male and female sections shall be of width and length 20 mm and 25 mm.

4.5.4 Pocket flaps

Pocket flaps shall be lined with outer material and interlined with fusible interlining. Each flap shall have a hook & loop (Velcro) in the centre and 5 mm from the edge. Each flap shall be inserted into the yoke seam. The length of each pocket flap shall be such that the flap covers the full width of the pocket. The flaps shall have blunted corners. The flaps width shall be 130 mm.

4.5.5 Back

The back shall have a yoke of colour navy and 20 mm reflective tape. The style of the orange lower back shall be plain.

4.5.6 Collar

Two-piece collar shall be two-tone with button section stand navy outer material of finished width 70 mm at the center back and points. The finished width of the stand and fall at the centre back of the collar shall be 30 mm. When the collar is fastened by means of the button and buttonhole in the collar stand, there shall be a gap of 20 mm between the upper edges of the collar. The finished collar shall be flat (i.e., free from curl) and smooth, and the edge shall be top stitched 6 mm from the edge.

4.5.7 Sleeves

short sleeves:

The short sleeves shall be two-tone (navy & orange), the top section shall be navy, the yoke seam shall be covered with a 20 mm silver reflective tape. The reflective tape shall extend from cuff to cuff across the yoke seam. The short sleeve shall have a plain cuff of finished width 30 mm (Navy) that is stitched down 2 mm from the top edge.

4.5.8 Buttonholes

4.5.8.1 Each shirt shall have shirt type vertically buttonholes in the left front, 15 mm from the front edge.

4.5.8. 2 Buttons

Each button shall be securely sewn with the holes of the button aligned to a position that corresponds to that of the relevant buttonhole. The buttons on the right front shall be 15 mm from the front edge. A spare button shall be sewn close to the bottom of the left side seam on the inside of each shirt.

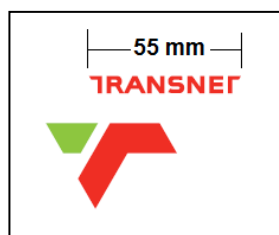
4.5.10 Hem

The bottom shall have a straight hem of finished width of 6 mm.

4.5.11 Logo Left front yoke

The colour of embroidery thread to be white and positioned in such a way that the logo is centred in the distance between the centre front and sleeve insertion seam.

The bottom edge of the logo to be 15 mm above the edge of the reflective tape.



4.6 Stitches, seams, and stitching's

4.6.1 General

All sewing shall be in accordance with SANS 10101.

4.6.2 Stitches

The stitches shall be as follows:

- a) **sleeve, sleeve insertion and side seams**: any of stitch types 515 to 519.
- b) **overlocking**: any of stitch types 502 to 505; and
- c) **all other sewing**: stitch type 301.

4.6.3 Seams

The seams shall be as follows:

- a) **sleeve, sleeve insertion and side seams**: seam type SSa of width at least 5 mm.
- b) **attaching pockets to shirt**: seam type LSd-1.
- c) **attaching pocket flaps to shirt**: seam type LSbl-2; and
- d) **edges of pocket flaps, shoulder straps and collar**: seam type SSe-2.

4.6.4 Stitching's

The stitching's shall be as follows:

- a) **turned-in hems**: stitching type EFa or stitching type EFb; and
- b) **all raw edges**: stitching type EFd.

4.6.5 Number of stitches

The number of stitches shall be as follows:

- a) **seams and top stitching**: 40 ± 4 per 10 cm.
- b) **overlocking**: 32 ± 3 per 10 cm.
- c) **bartacks**: 20 ± 2 per 1 cm.
- d) **buttonholes**: 12 ± 1 per 1 cm; and
- e) **buttons**: 12 ± 1 per button.

5 Labelling, Care-labelling, and Packing

5.1 Labelling

The garment shall be labelled and marked in accordance with the requirements of specification CSS 286.21 LAB/1

TRANSNET
Manufacturer's name
ITEM NO: 35/000000
Size: 97 cm
Spec. No: G200 Poly / Cotton MADE IN SOUTH AFRICA Y.O.M 2020 VAT No: 0000000

5.2 Care-labelling

Each shirt shall have a woven or printed label that is permanently secured and that provides (in accordance with SANS 10011) correct and appropriate care instructions. Printed labels shall comply with the requirements of SANS 1309. All care-labels and their markings shall be such that they outlast the garments.

5.3 Packing

The garments shall be packed and marked in accordance with requirements of specification CSS 286.21 PAC/1

Annex A
(normative)

Special conditions of tender

A-1 Unless otherwise stated, Transnet (or an officer or organization deputed by it), shall be the inspecting authority.

A-2 Sample submission will be according to the RFP/ RFQ requirements.

A-3 The shirts shall be subject to inspection during manufacture. The inspector shall, during normal working hours, be given all reasonable facilities for carrying out his duties and shall have the right of entry into the contractor's factory and the factory or works of any sub-contractor where work on shirts supplied to this specification may be in progress.

A-4 The contractor shall inspect the finished shirts for compliance with the specification before submitting them to the inspecting authority for final inspection.

A-5 Before acceptance, the shirts shall have been inspected and tested by the inspecting authority and found to comply with the requirements of the specification.

HISTORY SHEET			
REV/NO	DATE	AMENDMENT / HISTORY	REVISED BY
1			

T-SHIRT, UNISEX (SHORT SLEEVE)

RNC (ORANGE)

1 Scope

This specification covers the materials and make of T-shirts for Transnet Limited.

NOTES

1) The following requirements will be specified in tender invitations and in each order or contract:

a) the size(s) required (see 4.4).

2) Special conditions of tender (that cover the conditions of acceptance of the T-shirts) are given in annex A.

2 Normative references

The following standards contain provisions which, through reference in this text, constitute provisions of this specification. All standards are subject to revision and, since any reference to a standard is deemed to be a reference to the latest edition of that standard, parties to agreements based on this specification are encouraged to take steps to ensure the use of the most recent editions of the standards listed below. Information on currently valid national and international standards may be obtained from the South African Bureau of Standards.

CSS 286.21, Clothing — *LAB/1: Labelling — PAC/1: Packing and marking.*

CKS 129, Colours *for textiles.*

SANS 877, Woven *cotton tapes.*

SANS 1360-1, Size *designation of clothes — Part 1: Men's and boys' outerwear garments.*

SANS 1362, Sewing *threads.*

SANS 10371 Terms *and definitions for clothing.*

SANS 5278 Sewing stitches *per length.*

SANS 105 B02, Colour *fastness to artificial light: Xenon arc fading lamp test.*

SANS 105 C10, Colour *fastness to washing: Test 3.*

SANS 105 E04, Colour *fastness to perspiration.*

SANS 79, Mass *per unit area of conditioned textile fabrics.*

SANS 5275, Wales, and courses *per unit length in knitted textile fabrics (counting glass method).*

SANS 960, Dimensional *changes of textile fabrics during washing.*

SANS 6104, Stitch *length of weft-knitted fabrics.*

SANS 10101, Standard nomenclature for stitches, seam, and stitching's

SANS 10188, Standard methods of garment measurement.

3 Definitions

For the purposes of this specification, the relevant definitions given in SABS 04 and the following definitions apply:

3.1 acceptable: Acceptable to Transnet Limited.

3.2 nominal: Subject to the tolerances normal to good manufacturing practice.

4 Requirements

4.1 Materials

4.1.1 General

The materials specified in 4.1.2 to 4.1.6 shall be supplied and used by the manufacturer. The colour of the stay tape and the sewing thread shall be an acceptable match to the colour of the knitted fabric.

4.1.2 Knitted fabric

The knitted fabric shall comply with the requirements given in table 1. The colour shall be an acceptable match to colour No. 149c-92 □Stewart blue" ¹⁾ or an orange colour acceptable to Transnet Limited, both of CKS 129 (see reference item number in the title).

Table 1 - Knitted fabric requirements

1	2	3
Property	Requirement	Method of test
Composition	100 % Cotton	Microscopically examination and chemical analysis
Construction	Plain jersey	Visual examination
Courses per 10 cm, min.	160	SANS SM 275
Wales per 10 cm, min.	120	SANS SM 275
Stitch length, mm, max.	3,0	SANS SM 1104
Mass per unit area, g/m ² , min.	190	SANS SM 79
Dimensional changes on washing, %, max.		SANS SM 960
Length	10	Procedure A1 ¹⁾
Width	10	
Colour fastness to light, rating, min. ...	5	SANS ISO 105 BO2
Colour fastness to washing, rating, min.		SANS ISO 105 CO3
Change in colour	4	
Staining of transfer cloths	4	
Colour fastness to perspiration, rating, min.		SANS ISO 105 EO4
Change in colour	4	
Staining of transfer cloths	4	

1) Test in tubular form and tumble dry for 20 min at 70°C.

4.1.3 Neck and cuff binding

The binding shall be made from the knitted fabric and shall be of finished width 20 mm, after sewing to the neck and cuff openings.

4.1.4 Stay tape

A tape that complies with the requirements for type TA13 of SANS 877.

4.1.5 Embroidery thread

An acceptable 100% viscose embroidery thread of colours that are acceptable matches to colours No. 873c- 99 ☐ Embroidery red ☐ and No. 507c-96 ☐ Navy ☐ of CKS 129.

4.1.6 Sewing thread

The sewing thread shall comply with the relevant requirements of SABS 1362 and shall be a polyester-and-cotton core-spun thread, ticket No. 120.

4.2 Workmanship

The T-shirts shall be made with first-class workmanship throughout and shall be free from defects that affect their appearance or may affect their serviceability (or both), and from marks, spots and stains incurred in the making up. All seams shall be smooth and all stitching uniform and free from twists, pleats and puckers and shall be sufficiently extensible to obviate seam cracking and undue shrinkage in use. All ends of sewing that are not secured in seams or other sewing shall be adequately back-tacked. All ends of sewing shall have been trimmed and loose threads removed. The T-shirts shall be of uniform and acceptable make, colour, and finish.

4.3 Style

The T-shirt shall have a round neck and short sleeves and a logo on the left front.

4.4 Sizes

The T-shirts shall be supplied in one or more of the size designations given in column 1 of table 2, as specified in the order or contract, and their measurements, determined in accordance with figure 3, shall conform to the appropriate values given in columns 2 to 5.

Table 2 – Size range

1	2	4	5	6	7	8	9
Size designation 1)	Nominal finished garment measurements, cm						
	Chest	½ Hem	Back length	Back Width	Neck Circum.	Sleeve Under-arm	Cuff
72-77 (XS)	90	45	70	36	36	18	38
82-87 (S)	100	50	74	40	38	18	40
92-97 (M)	110	55	77	44	40	19	42
102-107 (L)	120	60	80	48	42	19	44
112-117 (XL)	130	65	82	52	44	20	46
122-127 (2XL)	140	70	84	56	46	20	48
132-137 (3XL)	150	75	86	60	48	21	50
142-147 (4XL)	160	80	88	64	50	21	52
152-157 (5XL)	170	85	88	68	52	22	54
162-157 (6XL)	180	90	88	72	54	22	56

1) Based, on the chest girth, in centimeters, of the intended wearer.

4.5 Make

NOTE — Unless inconsistent with the text, all measurements are nominal.

4.5.1 Body

The body shall consist of two parts (i.e., a front and a back) that are seamed together at the sides and shoulders. The lower edge of the body shall have a hem of finished width 20 mm. Each shoulder shall be stayed on the inside with stay tape (see 4.1.4) that is sewn in with the shoulder seam.

4.5.2 Neck opening

The neck opening shall be round and shall be bound with binding (see 4.1.3). The binding shall be neatly closed on the left side (as worn) in line with the shoulder seam.

4.5.3 Sleeves

The sleeves shall be one-piece set-in short sleeves that are seamed under the arms. The ends of the sleeves shall be bound with binding (see 4.1.3). The binding shall be neatly closed in line with the seam.

4.5.4 Logos

4.5.4.1 Embroidered logo

Each T-shirt shall have the appropriate logo embroidered on the chest on the left front (see figure 1). The colour of the screen-printing shall be an acceptable match to colour No. 1c-95 "White" of CKS 129.

4.6 Stitches, seams, and stitching's

4.6.1 General

All sewing shall be in accordance with SABS 0101.

4.6.2 Stitches

The stitches shall be as follows:

- a) **bound edges:** stitch type 402 or other acceptable stitch type.
- b) **hem:** stitch type 502 or type 503 or other acceptable type of overlocking stitch; and
- c) **all other sewing:** stitch type 504 or other acceptable type of overlocking stitch.

4.6.3 Seams

The seams shall be as follows:

- a) **bound edges:** seam type BSb; and
- b) **all other seams:** seam type SSa.

4.6.4 Stitching's

Stitching type EFl.

4.6.5 Number of stitches

40 □ 4 per 10 cm.

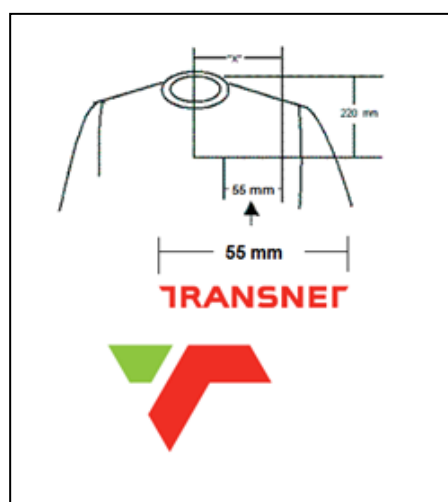
5 Labelling, packing, and marking

5.1 Labelling As specified in CSS 286.21 LAB/1.

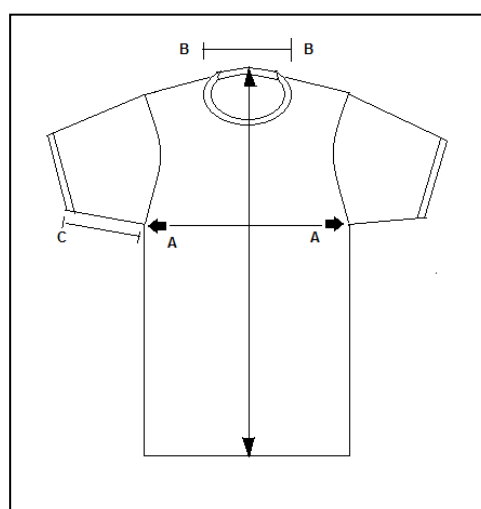
<p>TRANSNET</p> <p>Manufacturer's name</p> <p>ITEM NO: 35/000000</p> <p>Size: 97 cm</p> <p>Spec. No: G201 100% Cotton MADE IN SOUTH AFRICA Y.O.M 2020 VAT No: 0000000</p>

5.2 Packing and marking as specified in CSS 286.21 PAC/1.

Figure 1 – Position of Logo



Size designation	72	77	82	87	92	97	102	107	112	117	122	127	132
Dimensions "X", cm	11.75	12	12.25	12.75	13	13.5	14	14.5	15	15.5	16	16.5	16.5



Measuring Points	Description
A-A: Chest circumference	Measure at the base of the armhole, with the garment spread completely flat, and multiply by 2.
B-B: Neck circumference	Measure across the width of the neck opening at the neck seam, with the seam straight but not stretched, and multiply by 2.
A-C: Underarm sleeve length	Measure from the base of the armhole to the bottom edge of the cuff.
D-D: Back length	Measure from the neck binding to the bottom hem, including the binding.

Annex A
(normative)

Special conditions of tender

A-1 Unless otherwise stated, Transnet Limited (or an officer or organization deputed by it), shall be the inspecting authority.

A-2 Sample submission will be according to the RFP/ RFQ requirements.

NOTE - When new dye batches of yarn are to be used in production, a sample piece of the knitted fabric, with the dye batch clearly marked, shall be tested, and approved by the inspecting authority before the dye batch may be used in production.

A-3 The T-shirts shall be subject to inspection during manufacture. The inspector shall, during normal working hours, be given all reasonable facilities for carrying out his duties and shall have the right of entry into the contractor's factory and the factory or works of any subcontractor where work on T-shirts supplied to this specification may be in progress.

A-4 The contractor shall inspect the finished T-shirts for compliance with the specification before submitting them to the inspecting authority for final inspection.

A-5 Before acceptance, the T-shirts shall have been inspected and tested by the inspecting authority and found to comply with the requirements of the specification.

HISTORY SHEET			
REV/NO	DATE	AMENDMENT / HISTORY	REVISED BY
1			

JACKET, FREEZER, UNISEX

RNC (NAVY WITH REFLECTIVE STIPS)

1 Scope

This specification covers the materials and make of A Jacket Freezer for personnel of Transnet Limited.

NOTES

- 1) The following requirements will be specified in tender invitations and in each order or contract:
 - a) the size(s) required (see 4.4).
- 2) Special conditions of tender (that cover the conditions of acceptance of the workwear shirts) are given in annex A.

2 Normative references

The following standards contain provisions which, through reference in this text, constitute provisions of this specification. All standards are subject to revision and, since any reference to a standard is deemed to be a reference to the latest edition of that standard, parties to agreements based on this specification are encouraged to take steps to ensure the use of the most recent editions of the standards listed below. Information on currently valid national and international standards may be obtained from the South African Bureau of Standards.

CSS 286.21 LAB/1, *Labelling*.

CSS 286.21 PAC/1, *Packaging*.

SANS 79, *Textiles - Mass per unit area of conditioned fabrics*.

SANS 10235, *Fibre content labelling of textiles and textile products*.

CKS 627, *Fusible interlinings*.

CKS 129, *Colours for Textiles*.

SANS 142, *Narrow elastic fabrics, and strip*.

SANS 1309, *Printed labels for textiles*.

SANS 1362, *Sewing threads*.

SANS 10004, *Terms and definitions for textiles and textile merchandise*.

SANS 10011, *Care-labelling of textile piece-goods, textile articles and clothing*.

SANS 10101, *Standard nomenclature for stitches, seams, and stitching's*.

SANS 10188, *Standard methods of garment measurement*.

SANS 10235, *Fibre-content labelling of textiles and textile products*.

SANS 10371, *Terms, and definitions for clothing*.

SANS 1822, "Slide Fasteners"

SANS 50471, *High visibility warning clothing for professional use – test methods and requirements*.

SANS 10371, *Terms, and definitions for clothing*.

SANS 5278, *Sewing stitches per unit length*.

SANS 1387-2, *Woven cotton, and similar apparel fabrics – Part 2: Polyester-and-cotton workwear fabrics*.

SANS 1387-7, *Woven cotton, and similar apparel fabrics – Part 7: Jacket linings*.

SANS 1387-11, *Woven cotton, and similar apparel fabrics – Part 11: Polyester-and-cellulosic raincoat fabrics*.

3 Definitions

For the purposes of this specification, the definitions given in SANS 10371 ("Terms and definitions for clothing" and the following shall apply:

3.1 acceptable: Acceptable to Transnet Limited.

3.2 nominal: Subject to the tolerances normal to good manufacturing practice.

2.3 SANS: South African National Standard

4.1 Materials

4.1.1 General

The materials specified in 4.1.2 and 4.1.3 shall be supplied and used by the manufacturer.

4.1.2 Outer material

The outer material shall be a Non breathable 100% Navy Oxford nylon with water repellent finish.

Mass: $\pm 210\text{gm/m}$.

4.1.3 Lining

Garment to be fully lined (Hood, body, and sleeves with a 100% brushed quilt flannel lining).

4.1.4 Filling:

Garment to have a layer of 135 gm^2 quilted polyester hollow fiber.

4.1.5 Sewing threads

Threads shall comply with the relevant requirements of SANS 1362, and shall be as follows:

- a) **sewing thread:** a polyester-and-cotton core-spun thread, ticket No. 120; and
- b) **overlocking thread:** crimp-textured polyester thread, ticket No. 140 or a crimp-textured polyamide thread, ticket No. 160.

4.1.6 Reflective Tape

High visibility reflective tape of nominal width 50 mm that complies with the relevant requirements for of SANS 50471 "High visibility warning clothing for professional use – test methods and requirements.

4.1.7 Press-studs

Press-studs of an intrinsically corrosion-resistant chromed base metal of the male and female type. The inside diameter of the hole in the female section shall be at least 5 mm.

4.1.8 Embroidery thread

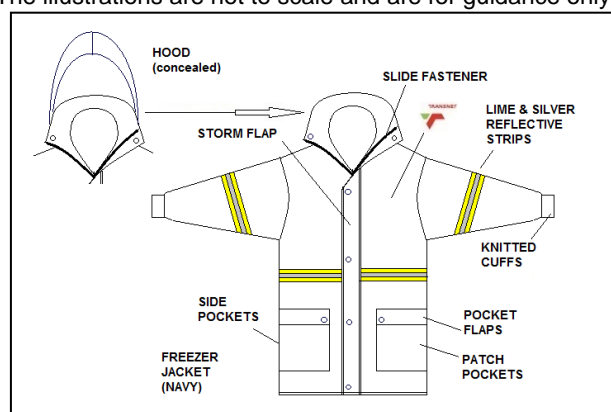
An acceptable 100% Viscose machine embroidery thread shall be used.

4.2 Workmanship

The jackets shall be cut and made with first - class workmanship throughout and shall be free from defects that affect their appearance or can affect their serviceability (or both), and form marks, spots and stains incurred in the making - up. All seams shall be smooth

and stitching shall be uniform. Seam and stitching shall be free from twists, pleats and puckers and shall be extensible enough to obviate seam cracking and undue shrinkage in use. All ends of sewing that are not secured in seams or in order sewing shall be adequately back-tacked. All ends of sewing shall have been trimmed and loose threads removed. The jackets shall be of uniform and acceptable make, colour and finish, and the matching of the shade of the component part of the jackets shall be such as to be acceptable

Note: The illustrations are not to scale and are for guidance only



4.3 Style

The Freezer Jacket shall be a single breast type, press stud storm flap, slide fastener closure. The Freezer Jacket shall be fully lined and padded, stand collar with press stud. The sleeves shall be set-in sleeves, with knitted ribs cuff. The jacket shall have waist patch pockets with press stud flaps and reverse entry hand warmer pockets. The concealed hood shall be stowed in collar. The set-in sleeves shall consist of one section with knitted cuffs. Reflective strips to be lime and silver on waist and sleeves. Transnet logo embroidered.

4.4 Sizes

The Freezer Jacket shall be supplied in one or more of the size designations given in columns 1 of table 1). The pattern shall conform to the specification.

4.5 Make

NOTE Unless inconsistent with the text, all measurements are nominal.

Table 1 - Size chart

1	2	3	4	5
Size designation	Nominal finished garment measurements, cm			
	Chest	Back length	Sleeve length 1)	Cuff Circumference
77-82 (XS)	100	78	80	33
87-92(S)	110	80	81	34
97-102 (M)	120	82	82	35
107-112 (L)	130	84	83	36
117-122 (XL)	140	86	84	37
127-132 (2XL)	150	88	85	38
137-142(3XL)	160	90	86	39
147-152 (4XL)	170	92	87	39
157-162 (5XL)	180	94	88	40
167-172 (6XL)	190	94	88	40

1) Measured from the neck point to the bottom edge of cuff

8.1. Jacket:

8.1.1 Front & Back

The front & back shall be three pieces with underarm seams and front storm flap slide fasteners opening, and two waist patch pockets.

8.1.2 Hood (concealed)

The hood shall consist of two identical sections that shall be so cut and fitted to the inside of the hood pocket that forms part of the stand collar. The hood shall be completely lined.

8.1.3 Hems:

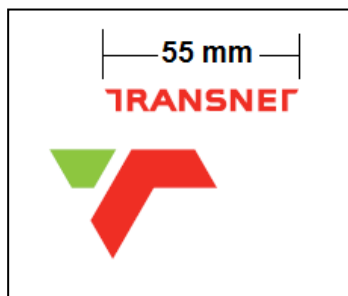
The lower edges of the jacket shall be turned up 15mm, turned in 5mm and stitched 2mm from turned in edge.

8.1.4 Slide Fastener

The slide fastener shall be a one-way open-end fastener that complies with the requirement of, SANS 1822 Fig. 3 c and Fig 5 b, class B.

8.1.5 Logo Left front

The colour of embroidery thread or screen printing to be white and positioned in such a way that the logo is centred in the distance between the centre front and sleeve insertion seam.



8.1.6 Pockets

Jacket shall have 2 patch pockets.

8.1.7 Waist Pockets

The waist pockets shall be 22cm wide and 20cm deep. Each waist pocket shall have a flap 22cm wide and 7cm deep. The flap shall be stitched down 2cm above pocket and stitched down 2mm and 8mm from edge. Pocket and flap shall be lined with self-material. Flaps shall be stitched down on sides to 1cm below pocket mouth opening. Pockets to be 7cm from slide fastener opening and 1cm from bottom hem.

8.1.8 Reflective strips

The orange and silver reflective strips to be positioned on waist and sleeves.

Reflective strips shall comply with requirements other than positioning and colour to:

SANS 50471: 2006 / EN 471 CLASS 2 Industrial wash, minimum 50 washes at 75 °C

(Copy of manufacturer's compliance certificate to accompany the tender documents)

* Strips to be silver (20 mm) on lime (50 mm)

(Silver strip must be clearly marked on the front or back with the manufacturer's identification)

9 Labelling, Care-labelling, and Packing

9.1 Labelling

The garment shall be labelled and marked in accordance with the requirements of specification CSS 286.21 LAB/1

TRANSNET
Manufacturer's name
ITEM NO:
35/000000
Size: 97 cm
Spec. No: G202
Oxford Nylon
MADE IN SOUTH AFRICA
Y.O.M 2020

9.2 Care-labelling

Each shirt shall have a woven or printed label that is permanently secured and that provides (in accordance with SANS 10011) correct and appropriate care instructions. Printed labels shall comply with the requirements of SANS 1309. All care-labels and their markings shall be such that they outlast the garments.

9.3 Packing

The garments shall be paced and marked in accordance with requirements of specification CSS 286.21 PAC/1

Annex A
(normative)

Special conditions of tender

A-1 Unless otherwise stated, Transnet (or an officer or organization deputed by it), shall be the inspecting authority.

A-2 Sample submission will be according to the RFP/ RFQ requirements.

A-3 The Jackets shall be subject to inspection during manufacture. The inspector shall, during normal working hours, be given all reasonable facilities for carrying out his duties and shall have the right of entry into the contractor's factory and the factory or works of any sub-contractor where work on Jackets supplied to this specification may be in progress.

A-4 The contractor shall inspect the finished Jackets for compliance with the specification before submitting them to the inspecting authority for final inspection.

A-5 Before acceptance, the shirts shall have been inspected and tested by the inspecting authority and found to comply with the requirements of the specification.

HISTORY SHEET			
REV/NO	DATE	AMENDMENT / HISTORY	REVISED BY
1			

WORKWEAR, UNISEX, (CONTI SUIT)

RNC (TWO TONE, ORANGE & NAVY)

1 Scope

This specification covers the requirements for material, supply of workwear conti suit (Denim) employed by Transnet.

NOTES

1 The following requirements will be specified in tender invitations and in each order or contract:

a) The size(s) required (see 4.5)

2 Special conditions of tender (which cover the conditions of acceptance of the jackets) are given in annex A.

2 Normative references

The following standards contain provisions which, through reference in this text, constitute provisions of this specification. All standards are subject to revision and, since any reference to a standard is deemed to be a reference to the latest edition to a standard, parties to agreements based on this specification are encouraged to take steps to ensure the use of the most recent editions of the standards indicated below. Information on currently valid national and international standards may be obtained from the South African Bureau of Standards.

CSS 286.21, Clothing — *LAB/1: Labelling* — *PAC/1: Packing and marking*.

CKS 129, Colours *for textiles*.

SANS 1309, *Sewing threads*

SANS 1387-4, Woven cotton, and similar apparel fabrics – Part 4: Cotton jean and drill fabrics.

SANS 1822, *Slide (zip) fasteners*.

SANS 1823, Touch, and close fastener.

SANS 5278, Sewing stitches per unit length

SANS 50471: 2006 / EN 471: 2003, High-visibility warning clothing for professional use - Test methods and requirements

SANS 10004, Terms and definitions for textiles and textiles merchandize

SANS 10011, Care-label of textile piece-goods, textile articles and clothing.

SANS 10101, *Standard nomenclature for stitches, seams, and stitchings*.

SANS 10188, Standard method of garment measurement

SANS 1362, *Sewing threads*.

SANS 1387, *Polyester / Cotton*.

3 Definitions

For the purposes of this specification, the following definitions apply:

3.1 acceptable: acceptable to Transnet Limited.

3.2 nominal: subject to the tolerances normal to good manufacturing practice.

4 Requirements

4.1 Materials

The outer material shall be polyester / cotton fabric that complies with the requirements for type PC74 (POLYESTER /COTTON 65/35, 230g/m²) of SANS 1387 and shall be of a colour that is an acceptable match to colour No. 232c "Transnet Orange" of CKS 129 and the Navy No. 2105c 1997/ of CKS 129

Copy of cloth compliance certificate to accompany tender documents

4.1.1 General

The component materials specified in 4.1.2 to 4.1.4 (inclusive), all a colour that is an acceptable match to that of the outer material, shall be supplied and used by the manufacturer.

4.1.2 Slide fasteners

4.1.2.1 Slide fasteners shall comply with the relevant requirements for performance class c slide fastener of SANS 1822.

4.1.2.2 Metal slide fasteners shall comply with the anti-nickel regulations of EN 1811 and EN 12472, they shall be of an intrinsically corrosion-resistant brass metal with 85% copper and 15% zinc alloy.

4.1.2.3 Brass metal fasteners shall not exceed 90% mass fraction of lead content. The colour of stringer of the slide fastener shall be an acceptable match to that of the fabric.

4.1.3 Threads

The orange and navy threads shall comply with the relevant requirements of SANS 1362 and shall be as follows:

a) **sewing thread:** a polyester-and-cotton core-spun thread, or a staple polyester thread, ticket No. 80 (In both cases).

b) **overlocking thread:** a crimp-textured polyester thread, ticket No. 140.

4.1.4 Elastic webbing

Elastic webbing shall comply with the requirements for type 1 of SANS 142, and shall be of width at least 30 mm.

4.1.5 Buttons and studs

- a) Brass stud button of an intrinsically corrosion resistant metal and having a smooth finish and a nominal width of 17mm.
- b) Brass nipple studs of an intrinsically corrosion resistant metal and having a nipple top and smooth finish and a nominal width of 9mm.

4.2 Workmanship

The workwear suit shall be cut and made in accordance with first-class workmanship throughout, and shall be free from defects that affect their appearance or that could affect their serviceability (or both), and from marks, spots, and stains incurred in the making-up. All seams shall be smooth, and all stitching shall be uniform. Seams and stitching shall be free from twists, pleats and puckers and shall be extensible enough to obviate seam cracking and undue shrinkage in use. All ends of sewing that are not secured in seams or in other sewing shall be adequately back-tacked. All ends of sewing shall have been trimmed and loose threads removed. The jackets shall be of uniform and acceptable make, colour, and finish, and the matching of the shades of the component parts of a jacket shall be such as to be acceptable.

4.3 Style

4.4 Sizes

The Workwear suit shall be supplied in one or more of the size designations given in column 1 of table 1 and 2, as specified in the order or contract and shall conform with the appropriate values given in columns “**Nominal finished garment measurements**”

4.5 Make

NOTE — Unless inconsistent with the text, all measurements are nominal.

Table 1 - Size range for workwear suits – Jackets Dimensions in centimeters

1	2	3	4	5	6
Size designation a)	Nominal finished garment measurements				
	Chest Circumference	Back Length	Back Width	Sleeve length ^b	Cuff circumference
77	94	70	36	49	27
82	99	71	38	49	27
87	104	72	40	50	27
92	109	73	42	50	28
97	114	74	44	51	28
102	119	74.5	46	51	28
107	124	75	48	52	29
112	129	75.5	50	52	29
117	134	76	52	53	29
122	139	76.5	54	53	30
127	144	77	56	54	30
132	149	77.5	58	54	30
137	154	78	60	54	31
142	159	78.5	62	54	31
147	164	79	64	54	31
152	169	79.5	66	54	32
157	174	80	68	54	32
162	179	80	69.5	54	32
167	184	80	71	54	32

a Based on the chest girth body dimensions, in centimeters, of the intended wearer
b Under-arm length.

Table 2 - Size range for workwear suit - Trouser Dimensions in centimeters

1		2	3	4	5	6	7	8
Size designation ^a		Nominal finished garment measurements						
Chest	Waist	Outside leg length	Inside leg Length	Waist (extended) ^b	Seat circumference	Bottom circumference	Front rise (excluding waist band)	Back rise (excluding waistband)
77	67	102	78	80	92	42	26	35
82	72	104	79	85	97	44	27	36
87	77	106	80	90	102	46	28	37
92	82	108	81	95	107	48	29	38
97	87	110	82	100	112	50	30	39
102	92	110	82	105	117	50	30	39
107	97	111	82	110	122	50	31	40
112	102	111	82	115	127	50	31	40
117	107	111	81	120	132	51	32	41
122	112	111	81	125	137	51	32	41
127	117	111	80	130	142	51	33	42
132	122	111	80	135	147	51	33	42
137	127	112	80	140	152	52	34	43
142	132	112	80	145	157	52	34	43
147	137	113	80	150	162	52	35	44
152	142	113	80	155	167	52	35	44
157	147	113	80	160	172	52	36	45
162	152	113	80	165	177	52	36	45
167	157	113	80	170	182	52	37	46

a Based, the waist girth body dimensions, in centimeters.

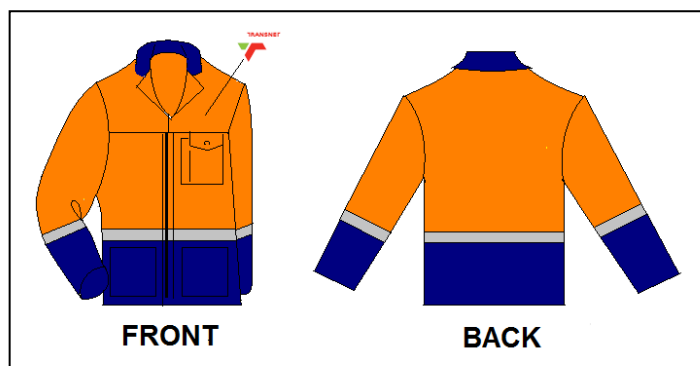
b The relaxed measurement of ruched waists shall be such that they are suitably ruched for comfort and safety.

Conti suit size combination (SANS 434)

Jacket	82	87	92	97	102	107	112	117	122	127	132
Trouser	72	77	82	87	92	97	102	107	112	117	122

5 Jacket

Note: The illustrations are not to scale and are for guidance only

**5.1 Style**

a) **Fronts:** The two-tone fronts separated with reflective strips at waist height shall have a one-way open-end type slide fastener, an open neck shirt type collar and lapels and plain set-in sleeves and the bottom shall have a plain hem. Each front shall have a yoke seam, the left front shall have a patch pocket with pencil pocket, stitched down mitred flap in the yoke seam. Two patch side pockets. Each lapel shall have a step of finished length 40 mm. The jacket shall be unlined.

b) **Backs:** The back shall be one piece with plain hem & reflective strip.

5.2 Pockets

The self-material pockets finished width and depth shall be measured from edge to edge on the outside of the pocket. Pocket mouths shall be finished with a double row stitched hem.

a) **Breast pocket with pencil pocket** shall be a patch pocket with square corners of finished width and depth of 14 cm. The pocket mouth hem shall be double folded of width 15 mm and a on the right-hand side of pocket a pencil pocket that form part of the pocket with mouth opening 20 mm. The pocket & pencil pocket shall be secured bar-tacked the width of 12 cm pocket mitred flap with 40 mm sides and be 60mm mitre. The breast pocket flap shall be lined with self-material and inserted in the yoke seam with a 10 mm pacing between the flap and pocket. The pocket flap shall have a press stud, with the male section secured to the lined section of the flap, and the female section to the pocket, centred 35mm from top of pocket.

b) **Side pockets** shall be a patch pocket with square corners of finished width and depth of 15 cm and 17 cm inserted into the side seam 40 mm above the hem with the one top corner bar-tacked

5.3 Facings

Each front shall have a grown -on facing of finished width 40 mm. The facing above the yoke seam shall be 60 mm and 12cm at the shoulder seam.

5.4 Back

The two tone back shall be plain without yoke seam.

5.4 Collar

The collar shall be an open-neck shirt type collar of outer material, lined with outer material. The finished depth shall be 60 mm at the centre back and 60 mm at the points

5.5 Sleeves

The sleeves shall be one-piece set-in type sleeves

5.6 Slide Fastener

The slide fastener shall be stitched on its full length on both stringers with two rows. It shall be covered on both the inside and outside, with material to obviate body and outside contact

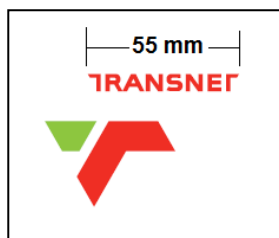
5.7 Hem

The hem shall be double folded at the bottom of the jacket and shall have a finished width of 10 mm. , turned in stitched down 2 mm from edge.

5.8 Logo Left front yoke

The colour of embroidery thread to be white and positioned in such a way that the logo is centred in the distance between the centre front and sleeve insertion seam.

The bottom edge of the logo to be 15 mm above the edge of the reflective tape.

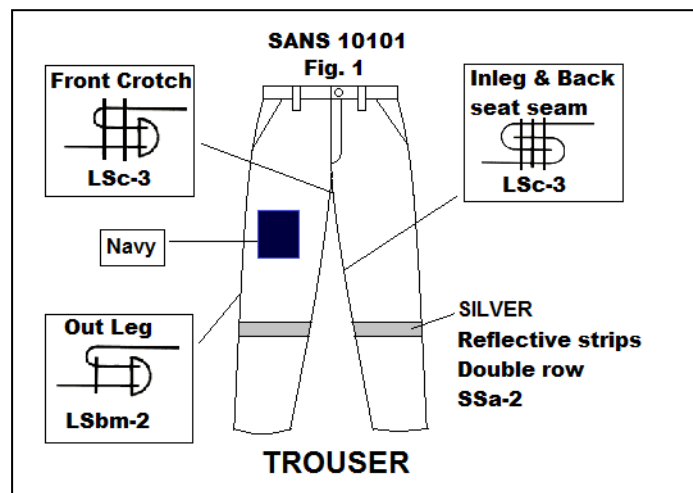


5.9. Reflective strips

- Horizontal strip on front left- & right-hand side and back on waist.
- Sleeve strips to be ± 17 cm from underarm with four rows of stitching
- Colour to be silver (50 mm)

6 Trouser

Note: The illustrations are not to scale and are for guidance only



6.1 Style:

- a) **Fronts:** The fronts shall be plain, fly front and side pockets & reflective strips
- b) **Backs:** The back shall be plain, and right back shall have a hip pocket and rule pocket & reflective strips.

6.2 Pockets

The self-material pockets finished width and depth shall be measured from edge to edge on the outside of the pocket. Pocket mouths shall be finished with a double row stitched hem.

- a) **Side pockets** shall be a slanting square corners patch pocket, 10 cm forward of the side seam at the top. The pocket finished width and length of 16 cm and 28 cm to be inserted into the side seam. The mouth opening shall be 14 cm from waist band. Pocket mouth shall be bar-tacked at each end.
- b) **hip pocket:** shall be a patch pocket with square corners of finished width and depth of 15 cm and 17 cm & the double folded hem of 15 mm stitched down 2mm from edge. Pocket mouth shall be bar-tacked at each end.
- c) **Rule pocket** shall be sewn in with the side seam on the right wearing back panel 30 mm below the bottom edge of hip pocket of width & length 90 mm & 22cm.

6.3 Buttonhole

The buttonhole be large enough to neatly accommodate the metal riveted button.

6.4 Button

The button shall be securely riveted in position that corresponds to the buttonhole.

6.5 Waistband

- a) **Front:** the waistband shall be sewn on, finished width of 35mm.
- b) **Back:** the waistband shall be grown on ruched from side seam to side seam of width 40mm

6.6 Fly

The fly shall be of outer material grown on and shall be stitched 30 mm from the front edge and bar-tacked 30 mm from the bottom on the vertical fly seam and on the bottom opening a horizontal bar-tacked.

6.6 Belt loops

Each pair of trouser shall have five belt loops on sizes with waist measurement 122 cm and smaller, and seven belt loops on larger sizes. Belt loop opening to be 50 mm.

- a) one on each front, 40 mm forward from pocket opening, one on each side seam, and one at the centre back, and
- b) on sizes larger than 122 the additional belt loops will be in the centre of each back panel.

6.7 Bottom

The bottom shall be plain and shall have a double folded hem of width 15 mm.

7.1 Stitches, seams, and stitching's**7.1.1 General**

All sewing (stitches, seams, and stitching's) shall be in accordance with SANS 10101.

7.1.2 Number of Stitches

Sewing stitches per unit length other than that specified below shall be determined in accordance with SANS 5278, as follows:

- a) three threads sewing and top stitching: 32 ± 2 per 10 cm
- b) other seaming and top stitching: 38 ± 4 per 10 cm
- c) overlocking: 32 ± 2 per 10 cm
- d) bar tacks: 18 min. per 10 mm

7.1.3 Seams

Seams shall be at least 7 mm wide and shall be as follows:

- a) **side, shoulder, and sleeve-insertion:** seam type SSa; and
- b) **all other seams:** seam type SSa-1.

7.1.4 Stitching's

Exposed raw edges and bottoms: stitching type EFd.

8 Labelling (Label & care-labelling) and packing

All labels shall:

- Be white woven rayon labels that are printed
- Comply with SANS 1309 "Printed labels for textiles)
--- information to be in legible block letters of height at least 3mm.
- Permanently secured
- Be such that they outlast the garment (including the marking)
- Separate size label on a pair of Trousers and Jacket

Jacket

To fit CHEST 102cm

Trousers

To fit CHEST 102cm
To fit Waist 92 cm

TRANSNET

Manufacturer's name

ITEM NO:

35/000000

Size: **97 cm**

Spec. No: **G204**

Poly / Cotton

MADE IN SOUTH AFRICA

Y.O.M 2020

VAT No: 00000000

8.1 Label (Also as specified in CSS 286.21 LAB/1.)

- Each Jacket shall have, sewn in with the centre back collar seam on the inside, a label that provides information as below.
- Each Trouser shall have, sewn in right front waistband ± 90 mm from Fly opening

8.2 Care-Labelling (Can be an integral part of the Label, printed on the back of the label)

- Each garment shall have a label that provides correct and appropriate care instructions (in words and symbols, in accordance with SANS 10011 "Care-labelling of textiles piece-goods, textiles and clothing")
- Each label to include the composition of the main fabric in accordance with the requirements of SANS 10235 "Fibre-content labelling of textiles and textile products"

8.3 Packing (Also as specified in CSS 286.21 PAC/1)

The garments shall be:

- Delivered in a commercially dry condition
- So packed that they will not be damaged in transit or in storage.
- Neatly folded and individually packed in a plastic envelope of suitable size and shape
- Unless otherwise specified in the order or contract, acceptably packed for transportation acceptable bulk containers.

8.3.1 Bulk containers

Each bulk container shall have a label securely attached to the outside. This label shall be visible when the containers are stacked and shall provide the following information:

- The manufacturer's name or trademark or both.
- the contract / order number
- the item description
- the size designation.
- the item number
- the quantity
- the designation

Annex A
(normative)

Special conditions of tender

A-1 Unless otherwise stated, Transnet Limited (or an officer or organization deputed by it), shall be the inspecting authority.

A-2 Sample submission will be according to the RFP/ RFQ requirements.

A-3 The conti suit user shall be subject to inspection during manufacture. The inspector shall, during normal working hours, be given all reasonable facilities for carrying out his duties and shall have the right of entry into the contractor's factory and the factory or works of any subcontractor where work on conti suit supplied to this specification may be in progress.

A-4 The contractor shall inspect the finished jackets / trouser for compliance with the specification before submitting them to the inspecting authority for final inspection.

A-5 Before acceptance, the conti suit shall have been inspected and tested by the inspecting authority and found to comply with the requirements of the specification.

HISTORY SHEET			
REV/NO	DATE	AMENDMENT / HISTORY	REVISED BY
1			

WORKWEAR, UNISEX (CONTI SUIT, DENIM)

RNC (DENIM), INDIGO BLUE

1 Scope

This specification covers the requirements for material, supply of workwear suit (Denim) employed by Transnet.

NOTES

1 The following requirements will be specified in tender invitations and in each order or contract:

a) The size(s) required (see 4.5)

2 Special conditions of tender (which cover the conditions of acceptance of the jackets) are given in annex A.

2 Normative references

The following standards contain provisions which, through reference in this text, constitute provisions of this specification. All standards are subject to revision and, since any reference to a standard is deemed to be a reference to the latest edition to a standard, parties to agreements based on this specification are encouraged to take steps to ensure the use of the most recent editions of the standards indicated below. Information on currently valid national and international standards may be obtained from the South African Bureau of Standards.

CSS 286.21, *Clothing — LAB/1: Labelling — PAC/1: Packing and marking.*

CKS 129, *Colours for textiles.*

SANS 1309, *Sewing threads*

SANS 1387-4, Woven cotton, and similar apparel fabrics – Part 4: Cotton jean and drill fabrics.

SANS 1822, *Slide (zip) fasteners.*

SANS 1823, Touch, and close fastener.

SANS 5278, Sewing stitches per unit length

SANS 50471, 2006 / EN 471: 2003, High-visibility warning clothing for professional use - Test methods and requirements

SANS 10004, Terms and definitions for textiles and textiles merchandize

SANS 10011, Care-label of textile piece-goods, textile articles and clothing.

SANS 10101, *Standard nomenclature for stitches, seams, and stitchings.*

SANS 10188, Standard method of garment measurement

SANS 1362, *Sewing threads.*

SANS 1387-4, *Cotton jean and drill fabrics.*

3 Definitions

For the purposes of this specification, the following definitions apply:

3.1 acceptable: acceptable to Transnet Limited.

3.2 nominal: subject to the tolerances normal to good manufacturing practice.

4 Requirements

4.1 Materials

The outer material shall be cotton denim fabric that complies with the requirements of for type DEN 41 (340 g/m²) of SANS 1387 Part VI and of an Indigo Blue colour of CKS 129. Yarn sulphur dyed and natural yarn. The material shall be supplied and used by the manufacturer

Copy of cloth compliance certificate to accompany tender documents

4.1.1 General

The component materials specified in 4.1.2 to 4.1.4 (inclusive), all a colour that is an acceptable match to that of the outer material, shall be supplied and used by the manufacturer.

4.1.2 Slide fasteners

4.1.2.1 Slide fasteners shall comply with the relevant requirements for performance class c slide fastener of SANS 1822.

4.1.2.2 Metal slide fasteners shall comply with the anti-nickel regulations of EN 1811 and EN 12472, they shall be of an intrinsically corrosion-resistant brass metal with 85% copper and 15% zinc alloy.

4.1.2.3 Brass metal fasteners shall not exceed 90% mass fraction of lead content. The colour of stringer of the slide fastener shall be an acceptable match to that of the fabric.

4.1.3 Threads

The orange and blue threads shall comply with the relevant requirements of SANS 1362 and shall be as follows:

- a) **sewing thread:** a polyester-and-cotton core-spun thread, or a staple polyester thread, ticket No. 80 (In both cases).
- b) **overlocking thread:** a crimp-textured polyester thread, ticket No. 140.

4.1.4 Elastic webbing

Elastic webbing shall comply with the requirements for type 1 of SANS 142, and shall be of width at least 30 mm.

4.1.5 Buttons and studs

- a) Brass stud button of an intrinsically corrosion resistant metal and having a smooth finish and a nominal width of 17mm.
- b) Brass nipple studs of an intrinsically corrosion resistant metal and having a nipple top and smooth finish and a nominal width of 9mm.

5 Workmanship

The workwear suit shall be cut and made in accordance with first-class workmanship throughout, and shall be free from defects that affect their appearance or that could affect their serviceability (or both), and from marks, spots, and stains incurred in the making-up. All seams shall be smooth, and all stitching shall be uniform. Seams and stitching shall be free from twists, pleats and puckers and shall be extensible enough to obviate seam cracking and undue shrinkage in use. All ends of sewing that are not secured in seams or in other sewing shall be adequately back-tacked. All ends of sewing shall have been trimmed and loose threads removed. The jackets shall be of uniform and acceptable make, colour, and finish, and the matching of the shades of the component parts of a jacket shall be such as to be acceptable.

5.1 Sizes

The Workwear suit shall be supplied in one or more of the size designations given in column 1 of table 1 and 2, as specified in the order or contract and shall conform with the appropriate values given in columns “**Nominal finished garment measurements**”

5.2 Make

NOTE — Unless inconsistent with the text, all measurements are nominal.

Table 1 - Size range for workwear suits – Jackets Dimensions in centimeters

1	2	3	4	5	6
Size designation a)	Nominal finished garment measurements				
	Chest Circumference	Back Length	Back Width	Sleeve length ^b	Cuff circumference
77	94	70	36	49	27
82	99	71	38	49	27
87	104	72	40	50	27
92	109	73	42	50	28
97	114	74	44	51	28
102	119	74.5	46	51	28
107	124	75	48	52	29
112	129	75.5	50	52	29
117	134	76	52	53	29
122	139	76.5	54	53	30
127	144	77	56	54	30
132	149	77.5	58	54	30
137	154	78	60	54	31
142	159	78.5	62	54	31
147	164	79	64	54	31
152	169	79.5	66	54	32
157	174	80	68	54	32
162	179	80	69.5	54	32
167	184	80	71	54	32

a Based, the chest girth body dimensions, in centimeters, of the intended wearer

b Under-arm length.

Table 2 - Size range for workwear suit - Trouser Dimensions in centimeters

1		2	3	4	5	6	7	8
Size designation ^a		Nominal finished garment measurements						
Chest	Waist	Outside leg length	Inside leg Length	Waist (extended) ^b	Seat circumference	Bottom circumference	Front rise (excluding waist band)	Back rise (excluding waistband)
77	67	102	78	80	92	42	26	35
82	72	104	79	85	97	44	27	36
87	77	106	80	90	102	46	28	37
92	82	108	81	95	107	48	29	38
97	87	110	82	100	112	50	30	39
102	92	110	82	105	117	50	30	39
107	97	111	82	110	122	50	31	40
112	102	111	82	115	127	50	31	40
117	107	111	81	120	132	51	32	41
122	112	111	81	125	137	51	32	41
127	117	111	80	130	142	51	33	42
132	122	111	80	135	147	51	33	42
137	127	112	80	140	152	52	34	43
142	132	112	80	145	157	52	34	43
147	137	113	80	150	162	52	35	44
152	142	113	80	155	167	52	35	44
157	147	113	80	160	172	52	36	45
162	152	113	80	165	177	52	36	45
167	157	113	80	170	182	52	37	46

a Based, the waist girth body dimensions, in centimeters.

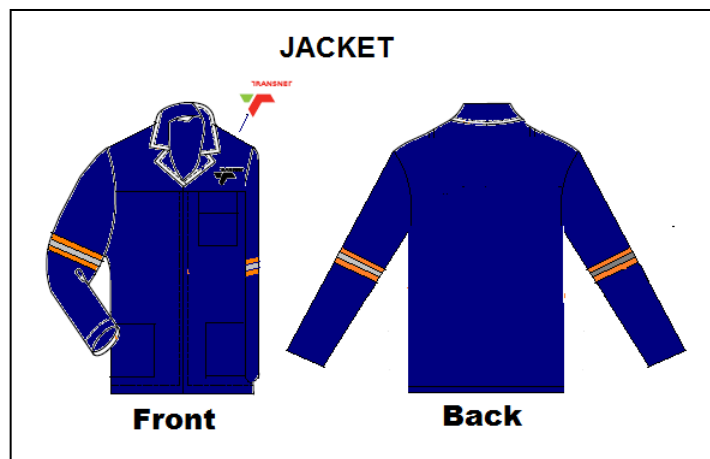
b The relaxed measurement of ruched waists shall be such that they are suitably ruched for comfort and safety.

Conti suit size combination (SANS 434)

Jacket	82	87	92	97	102	107	112	117	122	127	132
Trouser	72	77	82	87	92	97	102	107	112	117	122

6 Jacket

Note: The illustrations are not to scale and are for guidance only

**6.1 Style**

a) **Fronts:** The fronts shall have a one-way open-end type slide fastener, open neck shirt type collar and lapels and plain set-in sleeves and the bottom shall have a plain hem. Each front shall have a yoke seam, the left front shall have a patch pocket & stitched down flap in the yoke seam. Two waist patch pockets stitched into the side seam. Each lapel shall have a step of finished length 40 mm. The jacket shall be unlined

b) **Backs:** The back shall be one piece with plain hem.

6.2 Pockets

The self-material pockets finished width and depth shall be measured from edge to edge on the outside of the pocket. Pocket mouths shall be finished with a double row stitched hem.

a) **Breast pocket** shall be a patch pocket with square corners of finished width and depth of 14 cm. The pocket mouth hem shall be double folded of width 15 mm and the pocket flap with a 30 mm overlap shall be secured bar tacked. The breast pocket flap shall be inserted in the yoke seam. The flap finished width and depth shall be 14 cm and 65 mm

b) **Side pockets** shall be a patch pocket with square corners of finished width and depth of 15 cm and 17 cm inserted into the side seam 40 mm above the hem with the one top corner bar-tacked

6.3 Facings

Each front shall have a grown -on facing of finished width 40 mm. The facing above the yoke seam shall be 60 mm and 12cm at the shoulder seam.

5.4 Back

The back shall be plain without yoke seam.

6.4 Collar

The collar shall be an open-neck shirt type collar of outer material, lined with outer material. The finished depth shall be 60 mm at the centre back and 60 mm at the points

6.5 Sleeves

The sleeves shall be one-piece set-in type sleeves with reflective strips above elbow.

6.6 Slide Fastener

The slide fastener shall be stitched on its full length on both stringers with two rows. It shall be covered on both the inside and outside, with material to obviate body and outside contact

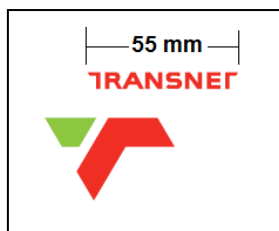
6.7 Hem

The hem shall be double folded at the bottom of the jacket and shall have a finished width of 10 mm, turned in stitched down 2 mm from edge.

6.8 Logo Left front yoke and back pocket of trouser.

The colour of embroidery thread to be white and positioned in such a way that the logo is centred in the distance between the centre front and sleeve insertion seam.

The bottom edge of the logo to be 15 mm above the edge of the reflective tape.

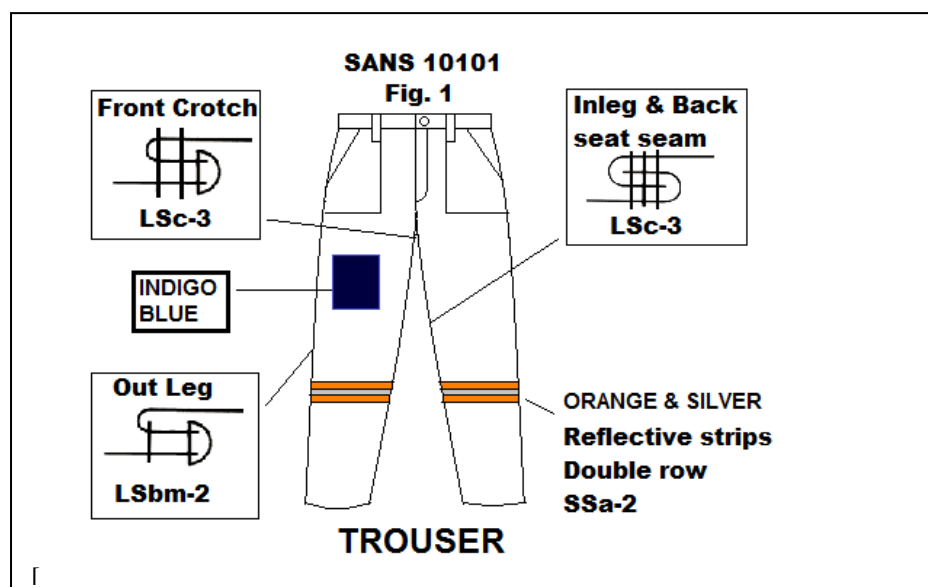


6.9 Reflective strips

- Sleeve strips to be ± 17 cm from underarm with four rows of stitching
- Colour to be orange & silver (17mm) on lime (50 mm)

7 Trouser

Note: The illustrations are not to scale and are for guidance only



7.1 Style:

- a) **Fronts:** The fronts shall be plain, fly front and side pockets with reflective strips
- b) **Backs:** The back shall be plain, and right back shall have a hip pocket with reflective strips

7.2 Pockets

The self-material pockets finished width and depth shall be measured from edge to edge on the outside of the pocket. Pocket mouths shall be finished with a double row stitched hem.

- a) **Side pockets** shall be a slanting square corners patch pocket, 10 cm forward of the side seam at the top. The finished width and length of 16 cm and 28 cm and inserted into the side seam. The mouth opening shall be 14 cm from waist band. Pocket mouth shall be bar-tacked at each end.
- b) **hip pocket:** shall be a patch pocket with square corners of finished width and depth of 15 cm and 17 cm and the double folded hem of 15 mm stitched down 2mm from edge. Pocket mouth shall be bar-tacked at each end.

7.3 Buttonhole

The buttonhole be large enough to neatly accommodate the metal riveted button.

7.4 Button

The button shall be securely riveted in position that corresponds to the buttonhole.

7.5 Waistband

- a) **Front:** the waistband shall be sewn on, finished width of 45mm.
- b) **Back:** the waistband shall be grown on ruched from side seam to side seam of width 45mm

7.6 Fly

The fly shall be outer material grown on and shall be stitched 30 mm from the front edge.

7.6 Belt loops

Each pair of trouser shall have five belt loops on sizes with waist measurement 122 cm and smaller, and seven belt loops on larger sizes. Belt loop opening to be 60 mm.

- a) one on each front, on the pocket seam, one on each side seam, and one at the centre back, and
- b) on sizes larger than 122 the additional belt loops will be in the centre of each back panel.

7.7 Bottom

The bottom shall be plain and shall have a double folded hem of width 15 mm.

8.1 Stitches, seams, and stitching's**8.1.1 General**

All sewing (stitches, seams, and stitching's) shall be in accordance with SANS 10101.

8.1.2 Stitches

Stitches shall be as follows:

- a) **overlocking:** any of stitch types 502-505; and

b) **all other stitching:** stitch type 301.

8.1.3 Seams

Seams shall be at least 7 mm wide and shall be as follows:

- a) **side, shoulder, and sleeve-insertion:** seam type SSa; and
b) **all other seams:** seam type SSa-1.

8.1.4 Stitching's

Exposed raw edges and bottoms: stitching type EFd.

8.1.5 Number of stitches

Sewing stitches per unit length other than that specified below shall be determined in accordance with SANS 5278, as follows:

- a) three threads sewing and top stitching: 32 ± 2 per 10 cm
b) other seaming and top stitching: 38 ± 4 per 10 cm
c) overlocking: 32 ± 2 per 10 cm
d) bar tacks: 18 min. per 10 mm
e) buttonholes: 12 ± 1 per 10mm.

9 Labelling (Label & care-labelling) and packing

All labels shall:

- Be white woven rayon labels that are printed
- Comply with SANS 1309 "Printed labels for textiles"
--- information to be in legible block letters of height at least 3mm.
- Permanently secured
- Be such that they outlast the garment (including the marking)
- Separate size label on a pair of Trousers and Jacket

Jacket

To fit CHEST 102cm

Trousers

To fit CHEST 102cm
To fit Waist 92 cm

TRANSNET

Manufacturer's name

ITEM NO:

35/000000

Size: **97 cm**

Spec. No: **G205**

100% Cotton

MADE IN SOUTH AFRICA

Y.O.M 2020

VAT No: 0000000

9.1 Label (Also as specified in CSS 286.21 LAB/1.)

- Each Jacket shall have, sewn in with the centre back collar seam on the inside, a label that provides information as below.
- Each Trouser shall have, sewn in right front waistband ± 90 mm from fly opening

9.2 Care-Labeling (Can be an integral part of the Label, printed on the back of the label)

- Each garment shall have a label that provides correct and appropriate care instructions (in words and symbols, in accordance with SANS 10011 "Care-labelling of textiles piece-goods, textiles and clothing")
- Each label to include the composition of the main fabric in accordance with the requirements of SANS 10235 "Fibre-content labelling of textiles and textile products"

9.3 Packing (Also as specified in CSS 286.21 PAC/1)

The garments shall be:

- Delivered in a commercially dry condition
- So packed that they will not be damaged in transit or in storage.
- Neatly folded and individually packed in a plastic envelope of suitable size and shape
- Unless otherwise specified in the order or contract, acceptably packed for transportation in acceptable bulk containers.

9.3.1 Bulk containers

Each bulk container shall have a label securely attached to the outside. This label shall be visible when the containers are stacked and shall provide the following information:

- The manufacturer's name or trademark or both.
- the contract / order number
- the item description
- the size designation.
- the item number
- the quantity
- the designation

Annex A
(normative)

Special conditions of tender

A-1 Unless otherwise stated, Transnet Limited (or an officer or organization deputed by it), shall be the inspecting authority.

A-2 Sample submission will be according to the RFP/ RFQ requirements.

A-3 The conti suit shall be subject to inspection during manufacture. The inspector shall, during normal working hours, be given all reasonable facilities for carrying out his duties and shall have the right of entry into the contractor's factory and the factory or works of any subcontractor where work on conti suit supplied to this specification may be in progress.

A-4 The contractor shall inspect the finished conti suit for compliance with the specification before submitting them to the inspecting authority for final inspection.

A-5 Before acceptance, the conti suit shall have been inspected and tested by the inspecting authority and found to comply with the requirements of the specification.

HISTORY SHEET			
REV/NO	DATE	AMENDMENT / HISTORY	REVISED BY
1			

GOLF SHIRTS, MEN'S & WOMENS (SHORT SLEEVE)

Reference item No. 35/158259 (Men's) "New Transnet logo": Supply
 item No. 35/158385 (Womens) "New Transnet logo": Supply
 item No. 35161318 (Unisex – men's size chart) Transnet logo & Hazmat logo

1. Scope

NOTES

- 1)** The following requirements will be specified in tender invitations and in each order or contract:

The size(s) required (see 4.4).

- 2)** Special conditions of tender (that cover the conditions of acceptance of the knitted shirts) are given in annex A.

2. Normative References

The following standards contain provisions which, through reference in this text, constitute provisions of this specification. All the standards are subject to revision and, since any reference to a standard is deemed to be a reference to the latest edition of a standard, parties to agreements based on this specification is encouraged to take steps to ensure the use of the most recent editions of the standards indicated below. Information on currently valid national and international standards may be obtained from the South African Bureau of Standards.

CSS 286.21, Clothing - LAB/1: Labeling - PAC/1: Packing and marking.

CKS 129, Colours for textiles.

CKS 627, Fusible interlinings.

SABS 877, Woven cotton tapes.

SABS 1360-1, Size designation of clothes - Part 1: Men's and boys' outerwear, garments.

SABS 1362, Sewing threads.

SABS 04, Terms and definitions for textiles and textile merchandise.

SABS 0101, Standard nomenclature for stitches, seams and stitchings.

SABS 0188 Standard methods of garment measurement.

SABS method 79, Mass per unit area of conditioned textile fabrics

SABS method 275, Wales and courses per unit length in knitted textile fabrics (counting glass method)).

SABS method 405, Colour fastness of textiles to artificial light: Xenon lamp method.

SABS method 443, Textiles - Colour fastness to washing - Test 2.

SABS method 731, Textiles - Colour fastness to perspiration (histidine method).

SABS method 960, Dimensional changes of textile fabrics during washing

3. Definitions

Following definitions apply:

3.1 acceptable: Acceptable to Transnet Limited.

3.2 nominal: Subject to the tolerances normal to good manufacturing practice.

4. Requirements

4.1 Materials

NOTE No material will be supplied by Transnet Limited.

4.1.1 General

The materials specified in 4.1.2 to 4.1.5 shall be supplied and used by the manufacturer.

4.1.2 Knitted fabric

The knitted fabric shall comply with the requirements given in table 1. The colour shall be an acceptable match to colour No. 616c- Navy blue colour acceptable to Transnet Limited, both of CKS 129.

4.1.3 Interlining

A fusible interlining that complies with the requirements of CKS 627 for interlinings that are suitable for use in garments that will be washed. The mass per area shall be such that the interlining is suitable for use in the placket.

NOTE - The selection of an interlining of appropriate mass per unit area shall be determined by consultation with the supplier(s) of the interlining.

4.1.4 Stay tape

A tape that complies with the requirements for type TA13 of SABS 877.

4.1.5 Buttons

Two-hole fully impregnated dope-dyed polyester buttons of an acceptable match to the body cloth and nominal diameter of 11 cm.

4.1.6 Threads

4.1.6.1 Sewing thread

The sewing thread shall comply with the relevant requirements of SABS 1362 and shall be polyester-and-cotton core-spun thread, ticket No. 75, or a staple polyester thread, ticket No. 60.

4.1.6.2 Cover thread

The same yarn as that used in the knitted fabric.

Table 1 - Knitted fabric requirements

1	2	3
Property	Requirement	Method of test
Composition	67% polyester %33% Cotton	Microscopical examination and chemical analysis
Construction	Pique knit	Visual examination
Courses per 1 cm, min.	10.5	SABS SM 275
Wales per 1 cm, min.	9.5	SABS SM 275
Stitch length, mm, max.	3.10	SABS SM 1104
Mass per unit area, g/m ² min.	200	SABS SM 79
Dimensional changes on washing, %, max.		SABS SM 960
Length	10	Procedure A1 ¹⁾
Width	10	
Colour fastness to light, rating, min. ...	5	SABS ISO 105 BO2
Colour fastness to washing, rating, min.		SABS ISO 105 CO3
Change in colour	4	
Staining of transfer cloths	4	
Colour fastness to perspiration, rating, min.		SABS ISO 105 EO4
Change in colour	4	
Staining of transfer cloths	4	
1) Test in tubular form and tumble dry for 20 min at 70°C.		

4.2 Workmanship

The shirts shall be made with first-class workmanship throughout and shall be free from defects that affect their appearance or may affect their serviceability (or both), and from marks, spots and stains incurred in the making-up. All seams shall be smooth and all stitching uniform and free from twists, pleats, and puckers. All ends of sewing shall have been trimmed and loose threads removed. The shirts shall be of uniform and acceptable make, colour and finish.

4.3 Style

The shirts (see figure 1) shall have short sleeves, a turn down collar, and a four-button opening at the front.

4.4 Sizes

The shirts shall be supplied in one or more of the size designations given in column 1 of table 2 & 3 as specified in the order or contract, and their measurements shall conform to the appropriate values given in columns 2 to 9(inclusive). The pattern shall conform to the specification and the "sealed sample" and shall be drafted by the manufacturer. Sealed sample is held by, and may be viewed at, the Clothing Division.

Men's Size chart (Table 2)

1	2	4	5	6	7	8	9
Size designation 1)	Nominal finished garment measurements, cm						
	Chest	½ Hem	Back length	Back Width	Neck Circum.	Sleeve Under-arm	Cuff
72-77 (XS)	90	45	70	36	36	18	38
82-87 (S)	100	50	74	40	38	18	40
92-97 (M)	110	55	77	44	40	19	42
102-107 (L)	120	60	80	48	42	19	44
112-117 (XL)	130	65	82	52	44	20	46
122-127 (2XL)	140	70	84	56	46	20	48
132-137 (3XL)	150	75	86	60	48	21	50
142-147 (4XL)	160	80	88	64	50	21	52
152-157 (5XL)	170	85	88	68	52	22	54
162-157 (6XL)	180	90	88	72	54	22	56
1) Based, on the chest girth, in centimeters, of the intended wearer.							

Womens Size chart (Table 3)

1	2	4	5	6	7	8	9
Size designation 1)							
	Bust	Hem	Back length	Back Width	Sleeve Under arm	Neck Circu m.	Cuff
72-77 (XS)	80	86	65	30	7	37	32
82-87 (S)	90	96	66	34	7	39	34
92-97 (M)	100	106	67	38	8	41	36
102-107 (L)	110	116	68	42	8	43	38
112-117 (XL)	120	126	69	46	9	45	40
122-127 (2XL)	130	136	70	50	9	47	42
132-137 (3XL)	140	146	71	54	10	49	44
142-147 (4XL)	150	156	72	58	10	51	46
152-157 (5XL)	160	166	73	62	11	53	48
162-157 (6XL)	170	176	74	66	11	55	50
1) Based, on the bust girth, in centimeters, of the intended wearer.							

4.5 Make

NOTE - Unless inconsistent with the text, all measurements are nominal.

4.5.1 Body

The body shall consist of two parts, i.e., a front and a back, that are overlapped together at the sides and shoulders. The lower edge of the body shall be overlapped, turned under and hemmed 30mm. Each shoulder shall be stayed on the inside with stay tape (see 4.1.4), or with body fabric of width (in the direction of the courses) 10mm, that is sewn in with the shoulder seam.

4.5.2 Sleeves

The sleeves shall be short set-in sleeve, overlapped under the arms.

4.5.3 Collar

- a) The knitted collar shall have a 4 mm white in woven stripe 7 mm from edge

4.5.4 Plackets

The placket to have a length of 17 cm for size medium and graded proportionally, and a width of 40 mm.

Two buttonholes shall be positioned centrally in the left side placket and one in the collar stand with button (4.1.6) sewn to the right side of placket, to correspond with buttonholes.

The top buttonhole shall be horizontal and the lower two, vertical.

4.5.5 Pocket

The pocket on the left-hand side shall be a patch pocket of body fabric, interlined with fusible interlining (see 4.1.4).

The pocket shall have 25 mm blunted corners. The finished pocket width and depth shall be 13 cm and 14 cm respectively. The pocket mouth shall have a hem of finished width 30 mm and the free edge shall be overlocked and shall be topstitched. The edges of the pocket shall be turned in and stitched down 2 mm from the edge.

Each end of the pocket mouth to be vertically box tacked with a finished width and length of 5 mm and 15 mm respectively. The pocket shall be positioned vertically, 70 mm from the centre of the placket for size m (92-97) and 21 cm from the collar/shoulder seam.

4.5.6 Logo

The **Transnet** logo shall be embroidered on the pocket, positioned centrally below the hem.

The colour shall be an acceptable match to colour No 1C –95 “White of CKS 129 (See fig. I



For reference no. 35/161190, Hazmat logo to be on the right-hand side chest when worn.



4.6 Stitches, seams, and stitching's**4.6.1 General**

All sewing shall be in accordance with SABS 0101.

4.6.2 Stitches

The stitches shall be as follows:

- a) attaching of pocket: stitch type 301; and
- b) all other sewing: stitch type 504 or other acceptable type of overlocking stitch.

4.6.3 Seams

The seams shall be as follows:

- a) attaching of pocket: seam type LSd; and
- b) all other seams: seam type SSa and finished with cover thread (See 4.1.6.2).

4.6.4. Stitchings

Stitching type EFa.

4.6.5 Number of stitches

The number of stitches per 10 cm (for both seams and cover thread) shall be 40 ± 4 throughout.

5 Labeling, packing, and marking**5.1 Labeling**

As specified in CSS 286.21 LAB/1.

5.2 Packing and marking

As specified in CSS 286.21 PAC/1.

NOTE:

For all materials supplied by the manufacturer, the manufacturer must supply Transnet with the certificate of compliance for the respective material, for every consignment received at the manufacturers factory.

Where SABS mark bearing cloth will be used a certificate to this extend must be supplied by the manufacturer of the garments.

Annex A

(Normative)

Special conditions of tender

A-1 Unless otherwise stated, the Executive Manager, (Transnet) (or an officer or organization deputed by him), shall be the inspecting authority.

A-2 Sample submission will be according to the RFP/ RFQ requirements.

A-3 The Golf shirts shall be subject to inspection during manufacture. The inspector shall, during normal working hours, be given all reasonable facilities for carrying out his duties and shall have the right of entry into the contractor's factory and the factory or works of any subcontractor where work on suits or individual garments supplied to this specification may be in progress.

A-4 The contractor shall inspect the finished Golf shirts for compliance with the specification before submitting them to the inspecting authority for final inspection.

A-5 Before acceptance, the Golf shirts shall have been inspected and tested by the inspecting authority and found to comply with the requirements of the specification.

HISTORY SHEET			
REV/NO	DATE	AMENDMENT / HISTORY	REVISED BY
1	June 2012	REVISION	C. DU PLOOY
2	June 2013	REVISION	C. DU PLOOY
3	September 2016	REVISION	C. DU PLOOY
4	June 2019	REVISION	C. DU PLOOY