

SCHEDULE OF LUMINAIRES WITH LAMPS

PLAN REF	DESCRIPTION	SUPPLIERS	CAT No
A	SURFACE MOUNTED FLUORESCENT LUMINAIRE WITH DOUBLE PARABOLIC LOUVRES, ELECTRONIC CONTROL GEAR AND 2 x 36W LAMPS	LIGHTING INNOVATIONS OR EQUAL APPROVED	ODYSSEY SBC236
B	AS 'A' WITH BUILT IN 110V DC/230V AC INVERTER FROM ECLAT LIGHTING (011 868-2578) FOR ONE 36W LAMP, INCLUDED A NI-CAD BATTERY PACK MAINTAINED MODE, DURATION 3 HOURS	LIGHTING INNOVATIONS OR EQUAL APPROVED	ODYSSEY SBC236
C	RECESSED DOWNLIGHT 14W LED LUMINAIRE, BODY COLOUR: WHITE, LUMINOUS FLUX 1500LM, COLOUR TEMP. 4000K, LENS: FROSTED ACRYLIC.	EUROLUX	PR390
D	LED BULKHEAD LUMINAIRE, ALUMINIUM DIE-CAST BLACK HOUSING, WITH 10W LED	GENLUX LIGHTING	VESTA LED 800

AIRCONDITIONING UNITS SCHEDULE:

PLAN REF	DESCRIPTION	COOLING CAPACITY	SUPPLIER	No A/C UNIT
ACU/AHU1 & 2	WALL MOUNTED UNIT WITH HEATPUMP	3.6KW	MITSUBISHI	PKA-RP35HAL PUHZ-RP35VHA4

CABLE SCHEDULE LV RETICULATION			
CABLE No	CABLE TYPE	FROM	TO
DB1, DB8	BYX4KCV	DB1	DB8
		ESTIMATED LENGTH (m)	ACTUAL LENGTH (m)
		250	

NOTES

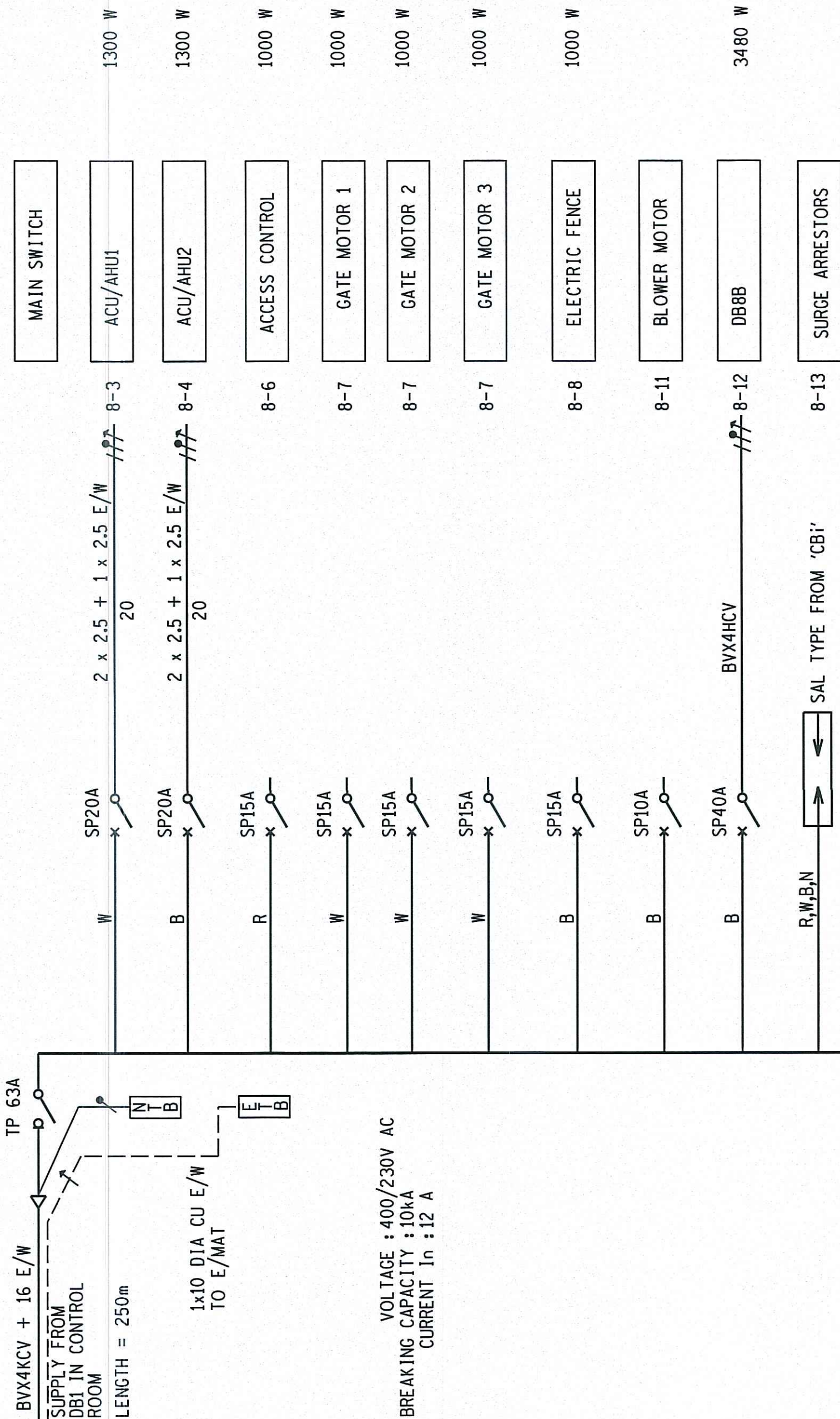
- ELECTRICAL INSTALLATION SHALL BE IN ACCORDANCE WITH:
 - SANS 10142
 - MODEL PREAMBLES FOR TRADES, SECTION 'S' ELECTRICAL WORK
 - TECHNICAL SPECIFICATION
- ALL WIRING SHALL BE CARRIED OUT USING PVC CABLES IN PVC CONDUITS TYPE OF INSTALLATION-FLUSH
- COLOUR OF LIGHT SWITCHES & SOCKET-OUTLET COVERS-WHITE
- MOUNTING HEIGHTS ABOVE FFL
 - LIGHT SWITCHES-1250
 - SOCKET-OUTLETS-350
 - DB -2000 TO TOP OF BOARD
 - LUMINAIRES SHALL BE INSTALLED AS SHOWN ON PLAN
- EARTH & NEUTRAL TERMINALS SHALL BE OF THE PRESSURE PLATE TYPE WITH CAPTIVE SCREWS
- POWER/CONTROL CABLES IN ROOF SPACE SHALL BE INSTALLED ON CABLE RACKING
- POWER/CONTROL CABLES AND REFRIGERANT PIPES IN ROOF SPACE IN CONTROL ROOM SHALL BE INSTALLED IN TRUNKING WITH COVERS
- POWER/CONTROL CABLES AND REFRIGERANT PIPES ON OUTSIDE WALLS SHALL BE INSTALLED IN TRUNKING WITH COVERS
- TRUNKING SHALL BE FABRICATED FROM 1mm SHEET STEEL, MEASURING 127x76.2 WITH CLIP-ON COVER, CORROSION PROTECTION: HOT-DIPPED GALVANISED TO SANS 1763. EXPOSED SURFACES ON OUTSIDE WALL SHALL BE BEIGE EPOXY-POWDER COATING
- CONTROL CABLES FROM REMOTE CONTROL UNITS TO HANDLING UNIT SHALL BE SURFACE MOUNTED WITHIN WHITE MINI TRUNKING ON WALL
- LIGHT DUTY CABLE TRAYS SHALL BE INSTALLED IN ROOF VOID WITH OVERALL WIDTH 50mm FOR CABLES & EARTH WIRE RUNNING FROM TRUNKING TO THE UNITS
- DRAIN PIPE FROM HANDLING UNITS SHALL BE POLYCOB PIPE WITH SUITABLE CONNECTOR, TYPE JG SPEEDFIT OR CONNEX, BETWEEN POLYCOB AND UNIT DRAIN PIPES. PVC TAPE IS NOT ACCEPTED. WATER SHALL BE DISCHARGED TO THE APRON SLAB (PIPE SHALL RUN IN TRUNKING, & ON OUTSIDE WALL FIXED ON MASTER BATS SADDLES & DISCHARGED 2 COURSE OF BRICKS ABOVE APRON SLAB & 200mm FROM WALL
- MOUNTING BRACKETS FOR OUTDOOR UNITS SHALL BE CANTILEVER SUPPORT ARMS TYPE OL-CAO FROM O-LINE OR EQUAL WITH STAINLESS STEEL BOLTS/WASHERS/NUTS
- ALL AIRCONDITIONING UNITS SHALL BE INSTALLED AS PER MANUFACTURERS INSTALLATION INSTRUCTIONS
- FLUSH MOUNTED 4X4 COVERED BOX ON PORCH AND IN CONTROL ROOM, CONNECTED VIA 20 DIA PVC CONDUIT. H= 1350
- UPS DB SHALL HAVE 5 OF BOTTOM ENTRY 25mm DIA CONDUITS FROM ACCESS FLOOR.

LABEL : DB 8 400/230V AC

FLUSH MOUNTED DB, COLOUR-GREY G29 TO SANS11091 WITH DOOR

ELU'S	PHASE	MCB'S	CONDUCTOR SIZE mm ²	CIRC No	LABEL	POINT No	LOAD
-------	-------	-------	--------------------------------	---------	-------	----------	------

CONN = 9080W
EST = 8030W

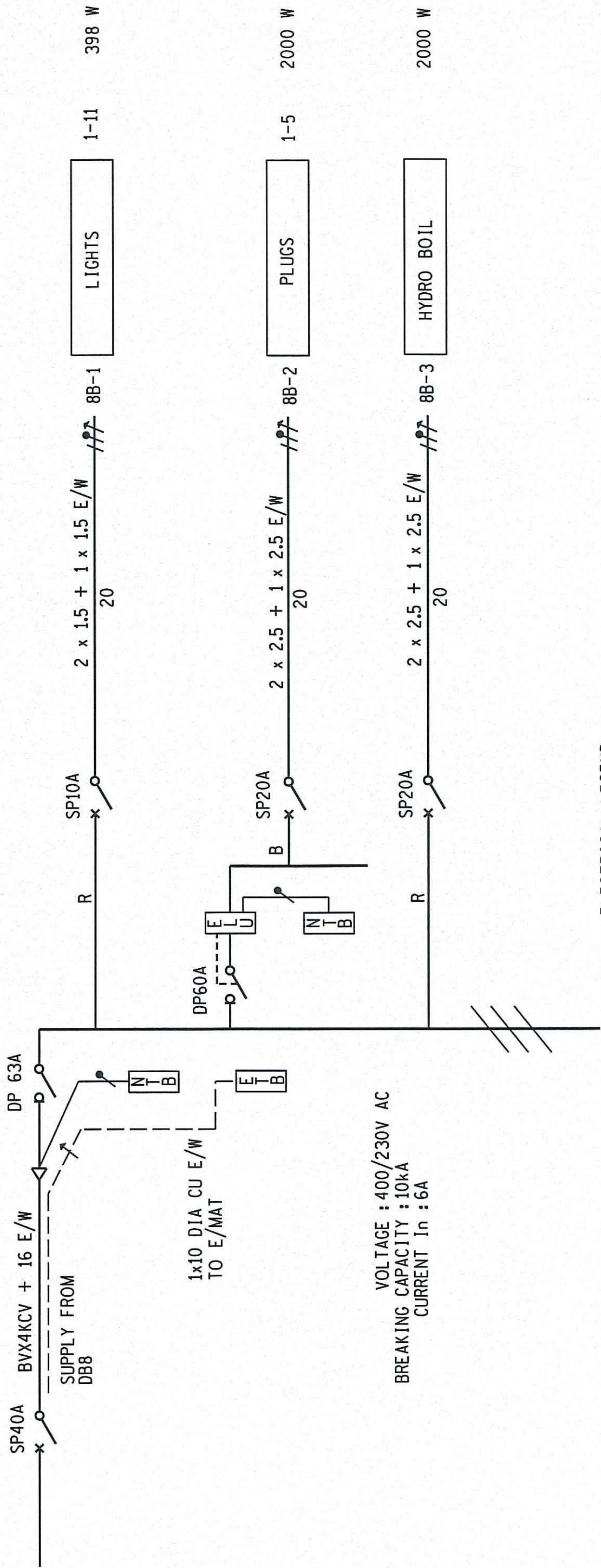


LABEL : DB8B 400/230V AC

FLUSH MOUNTED DB, COLOUR-GREY G29 TO SANS11091 WITH DOOR

ELU'S	PHASE	MCB'S	CONDUCTOR SIZE mm ²	CIRC No	LABEL	POINT No	LOAD
-------	-------	-------	--------------------------------	---------	-------	----------	------

CONN = 4638W
EST = 3480W



ELECTRICAL LEGEND:

(IN ACCORDANCE WITH NRS002)

- 16A DOUBLE SWITCH SOCKET OUTLET
- CIRCUIT BREAKER
- SWITCH-DISCONNECTOR
- CABLE GLAND WITH EARTH TAG
- EARTHSTUD
- TERMINALS

0	REVISION DESCRIPTION	BY	CHKD	DATE	REFERENCE DRAWINGS
APPROVED BY	Eskom				
DATE: 17/11/2018	Eskom Holdings SOC Ltd Reg No 2002/015527/30				
CHECKED BY	INGACANE				
DATE: 17/11/2018	ACCESS CONTROL BUILDING ELECTRICAL INSTALLATION AND SCHEMATIC DIAGRAM				
DRAWN BY	E				
DATE: 19/11/2018	EING13P01-SE-D46				
SCALE AS SHOWN	3				
REVISION	0				