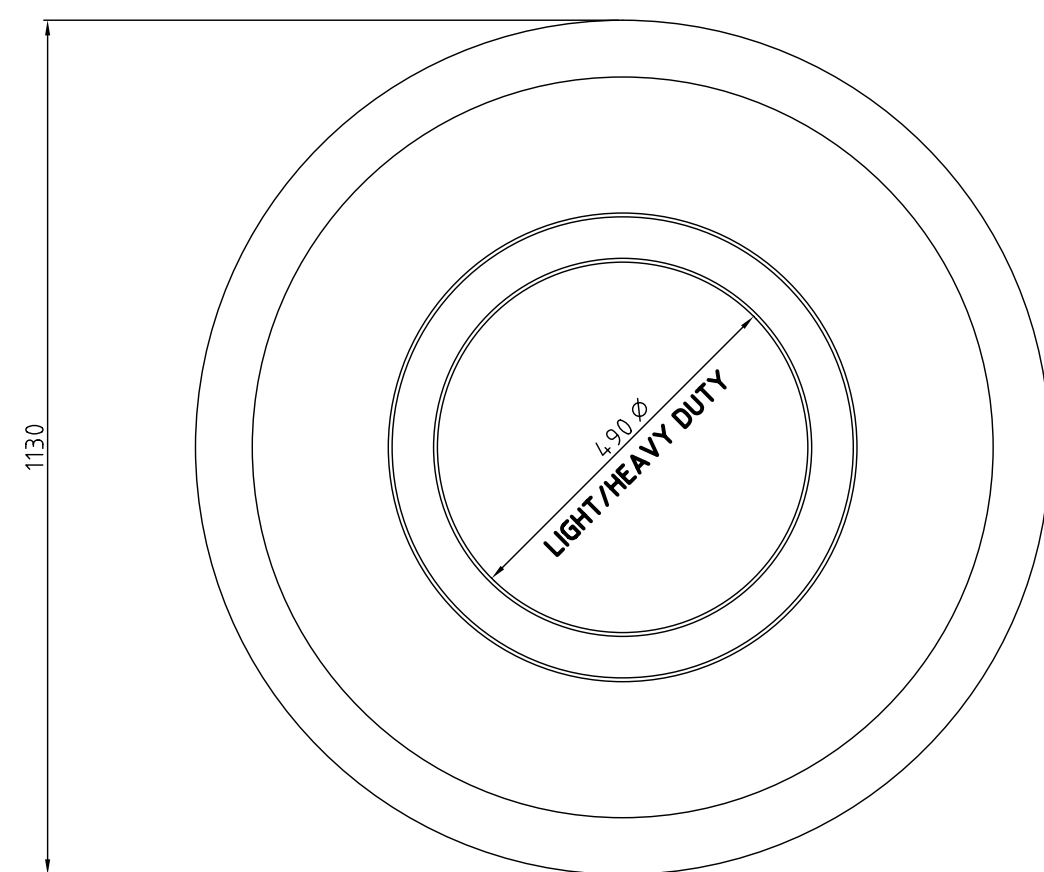
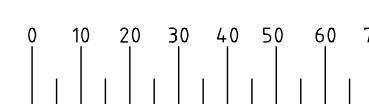
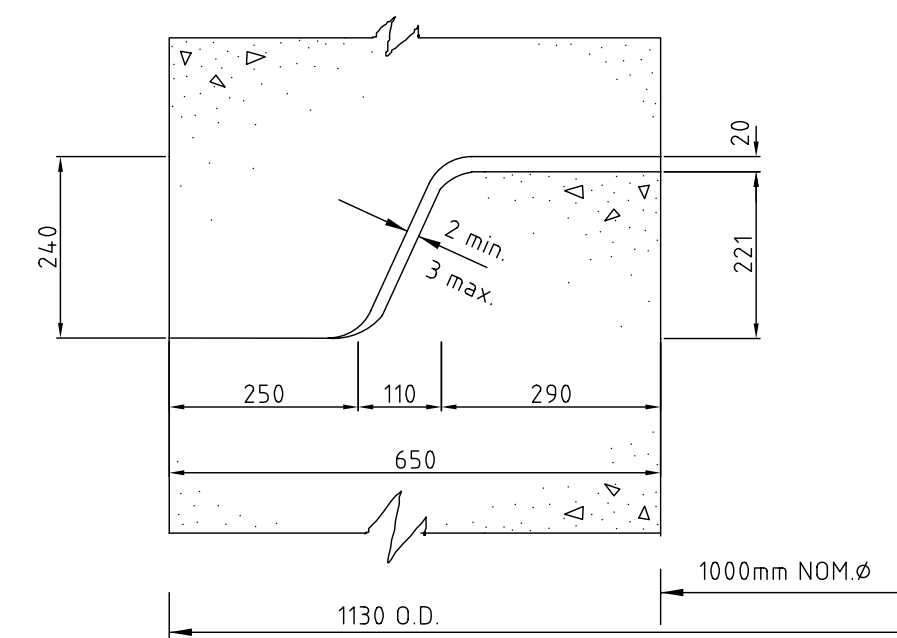


CITY ENGINEERS
SERVICE UNIT

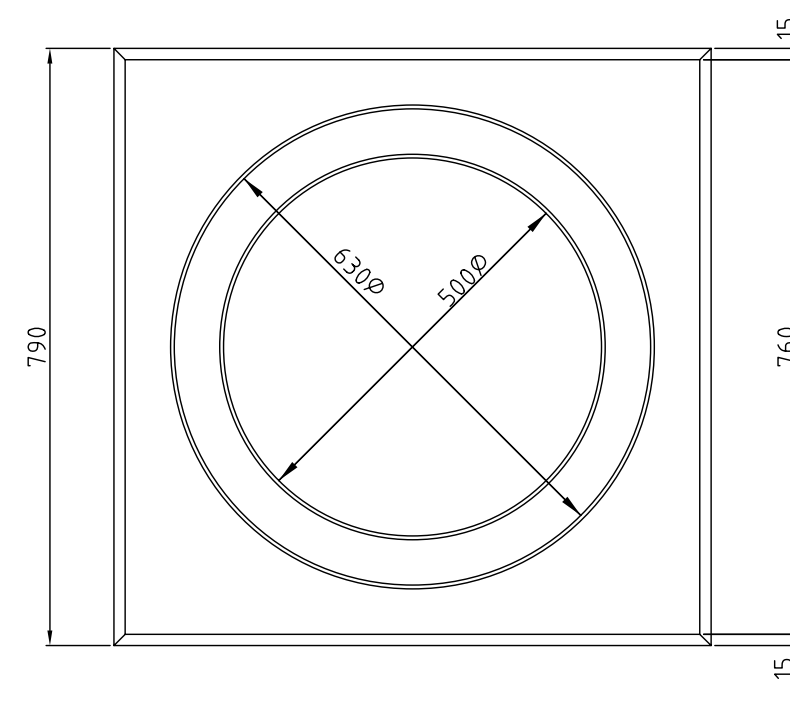
ROADS DEPARTMENT

PLAN DESCRIPTION	DWG. NO.	
CONTINUED FROM		
CONTINUED ON		
CROSS SECTIONS		
TYPICAL CROSS SECTION		
SURVEY LAYOUT		

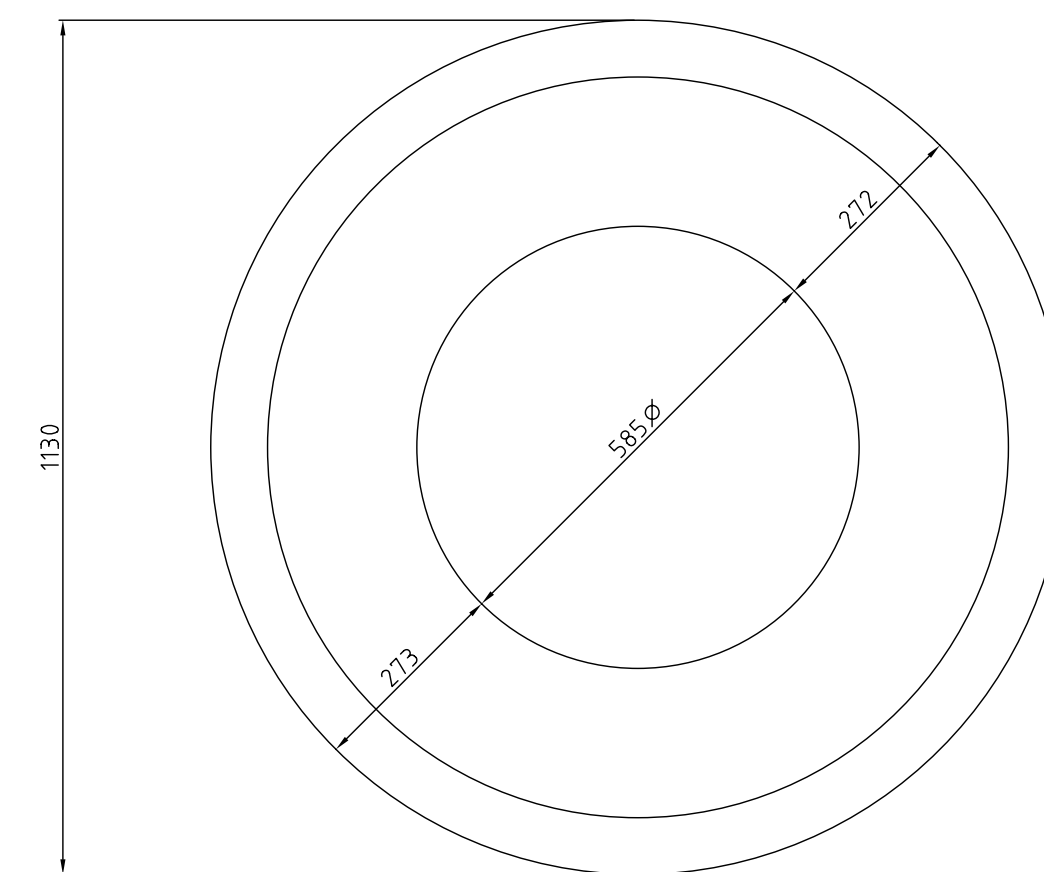
REDUCED PLAN USE SCALE BELOW

PLAN OF CIRCULAR LIGHT AND HEAVY DUTY
FRAME FOR 1000 NOM. DIA. MANHOLE

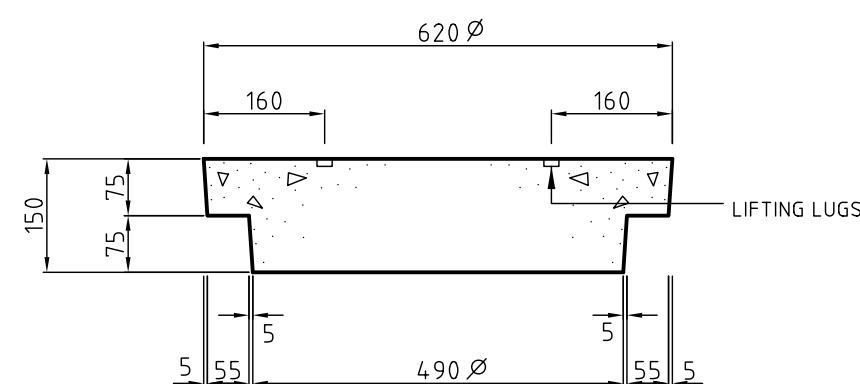
DETAIL OF JOINT



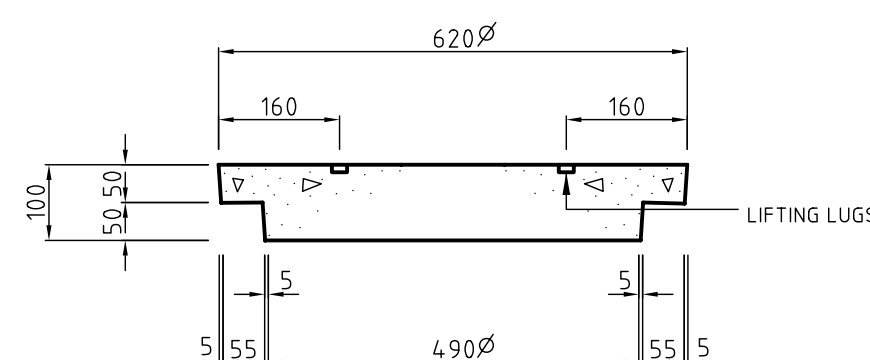
PLAN



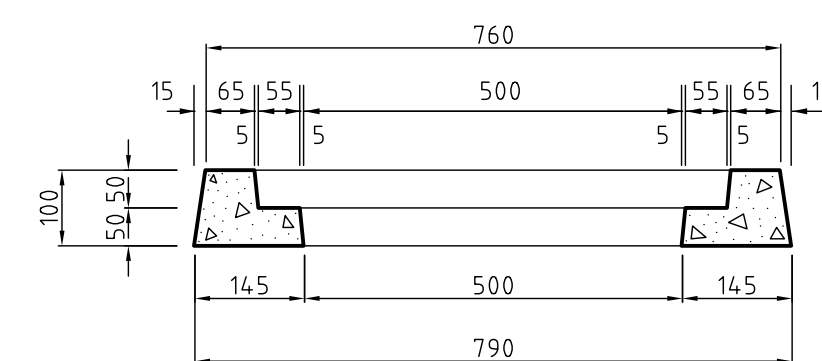
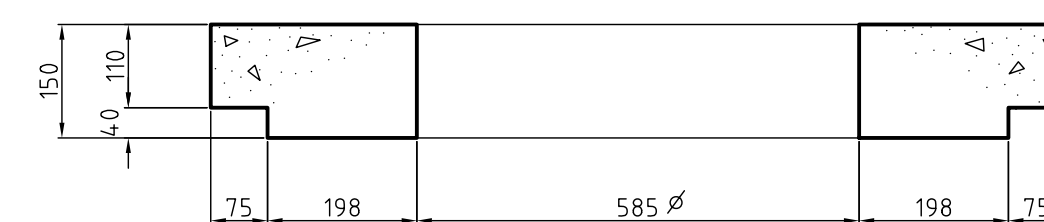
PLAN OF CIRCULAR COVER SLAB



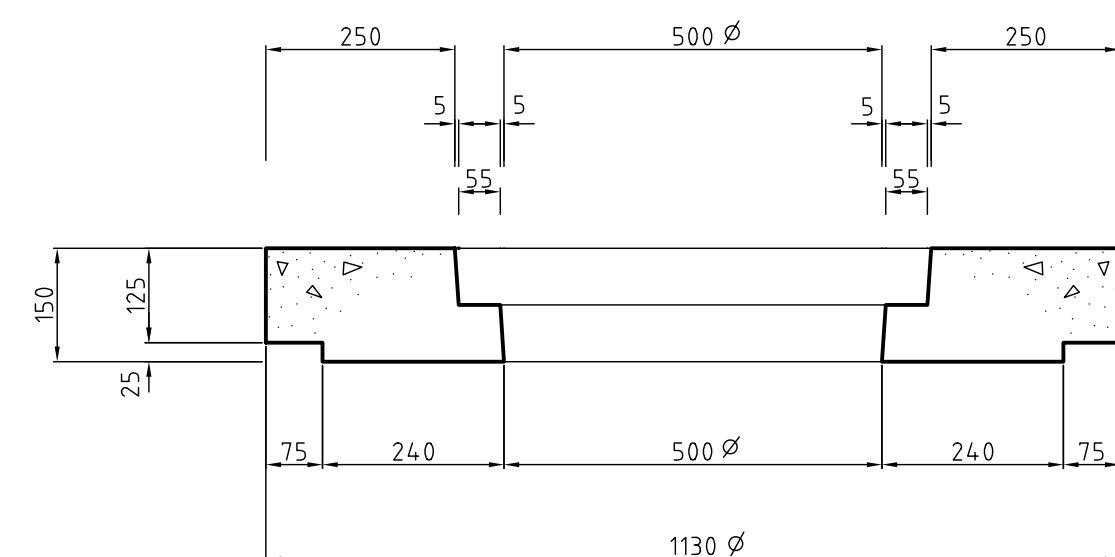
SECTION OF CIRCULAR HEAVY DUTY MH COVER



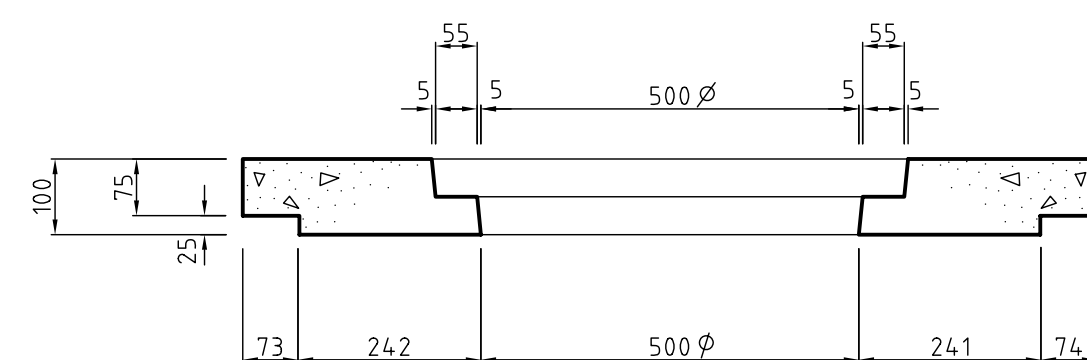
SECTION OF CIRCULAR LIGHT DUTY MH COVER

SECTION OF LIGHT DUTY
SQUARE MANHOLE FRAME

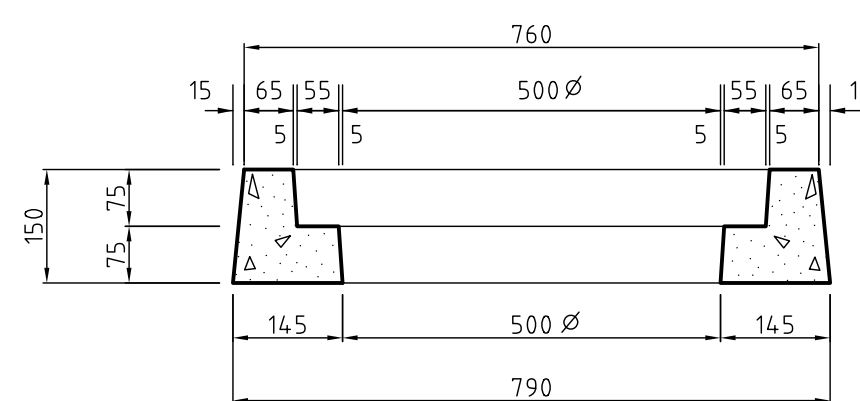
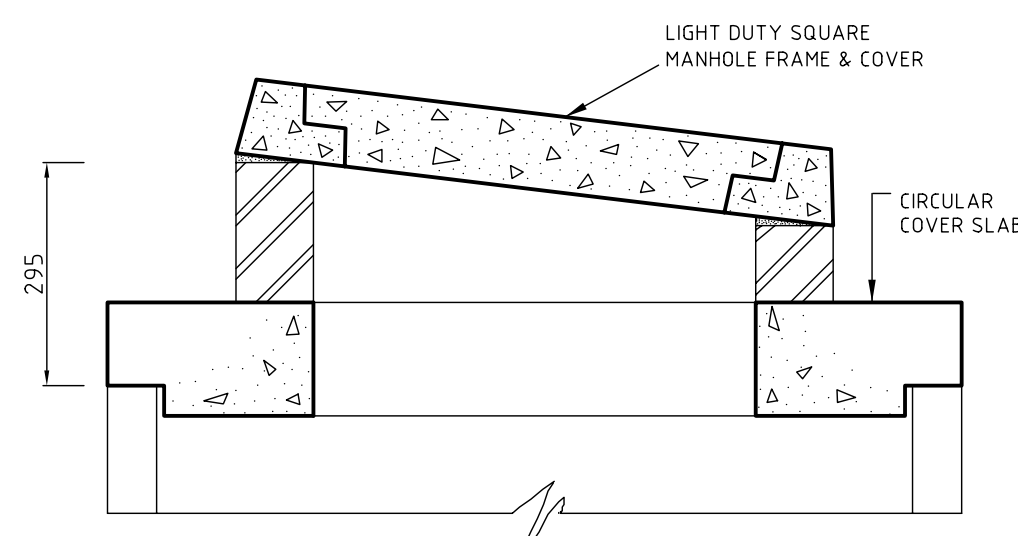
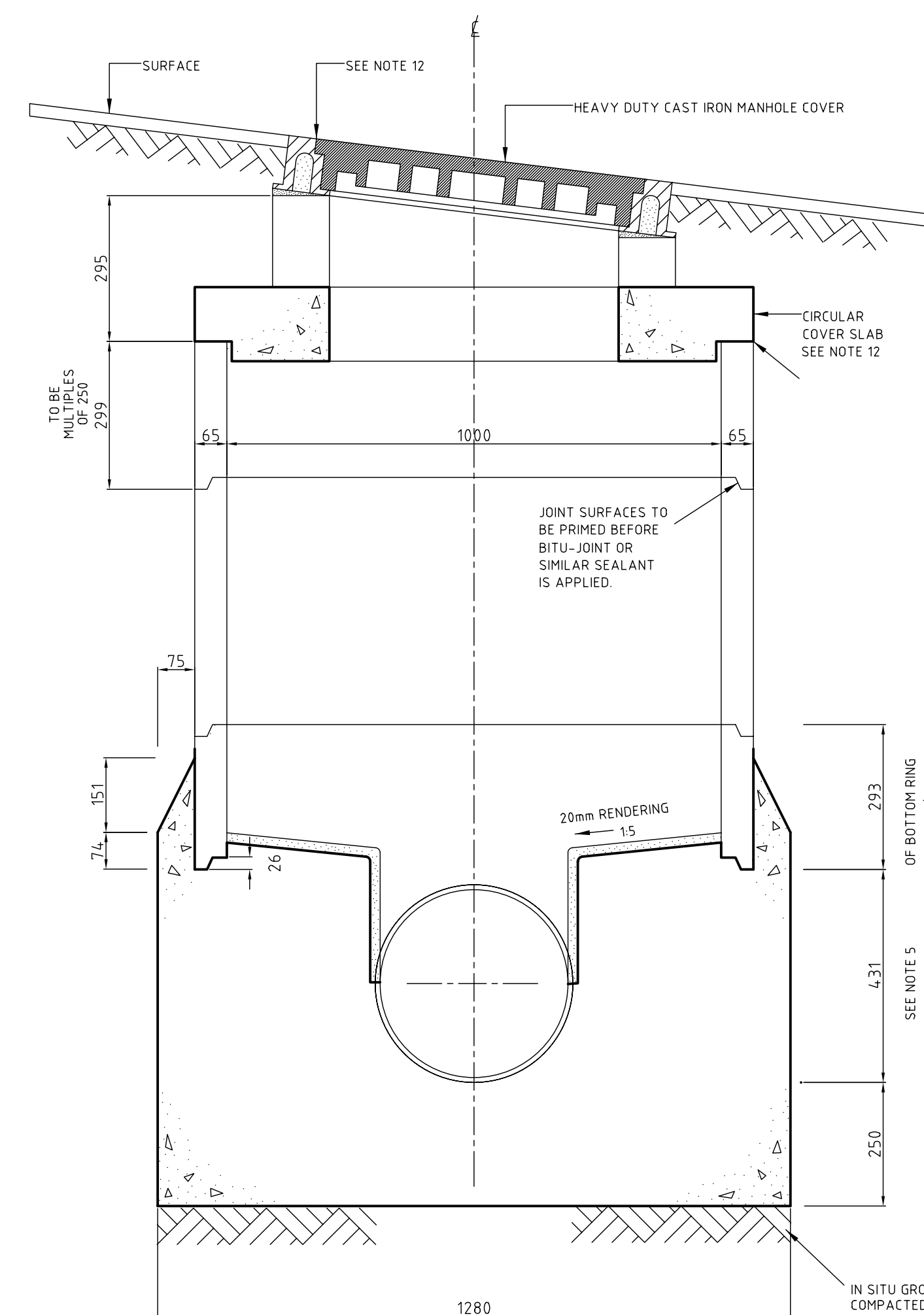
SECTION OF CIRCULAR COVER SLAB



SECTION OF CIRCULAR HEAVY DUTY M.H. FRAME

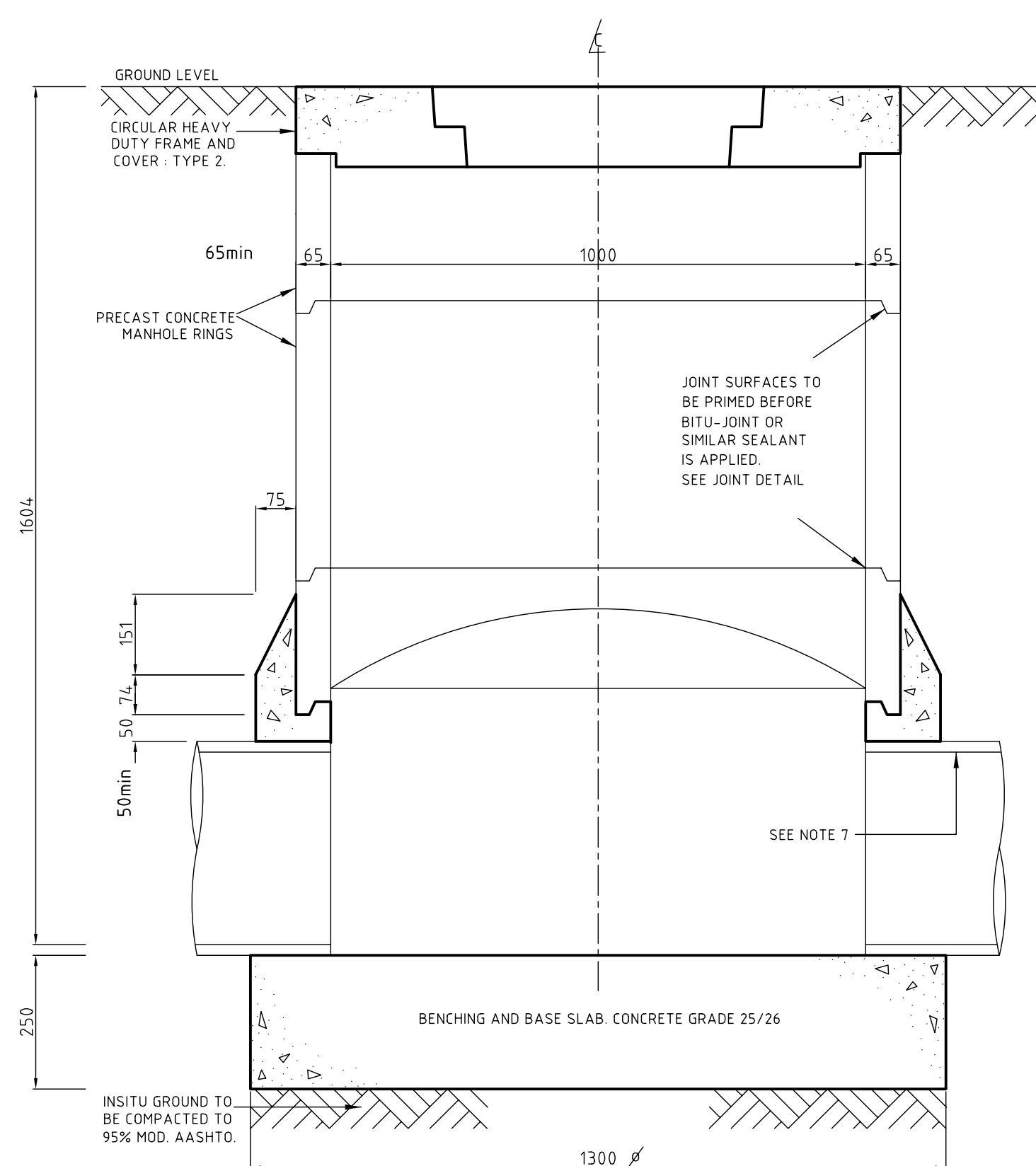


SECTION OF CIRCULAR LIGHT DUTY MH FRAME

SECTION OF HEAVY DUTY
SQUARE MANHOLE FRAME.SECTION OF LIGHT DUTY SQUARE
MANHOLE FRAME AND COVER

SECTION OF 1000 DIA. MANHOLE

PRECAST PRODUCT DETAILS	
RING MANHOLES	38850
CIRCULAR FRAMES AND COVER SLAB	38851
SQUARE MANHOLE FRAMES	38852
MANHOLE COVERS	38853



SECTION OF 1000 DIA. MANHOLE

NOTES:

A. GENERAL

- ALL PRECAST CONCRETE MANHOLE COMPONENTS TO COMPLY WITH THE REQUIREMENTS OF S.A.B.S.1294 (WHERE APPLICABLE)
- LENGTHS OF INDIVIDUAL WALL UNITS ARE TO VARY IN MULTIPLES OF 250mm.
- HEAVY DUTY CAST IRON COVERS AND FRAMES TO DRG.NO.DMW1281/A ARE TO BE USED ON MANHOLES UNDER VEHICULAR TRAFFIC.
- FOR DETAILS OF STEEL REINFORCEMENT TO MANHOLE COVERS, COVER SLABS AND FRAMES - SEE STANDARD PRECAST DETAILS LISTED ABOVE.

B. STORMWATER MANHOLE

- DIMENSION D VARIES WITH THE DIAMETER OF THE PIPES. DIMENSION D SHALL BE TO A POINT 50mm ABOVE THE HIGHEST CROWN OF THE PIPES.
- RENDERING FOR MANHOLE BENCHING SHALL CONSIST OF 1 PART CEMENT TO 3 PARTS SAND THOROUGHLY MIXED AND APPLIED TO CONCRETE SURFACES WHILE THE LATTER ARE STILL GREEN. RENDERING SHALL BE AT LEAST 20mm THICK.

- THE LENGTH OF PIPE BUILT INTO THE MANHOLE SHALL NOT EXCEED 2.5m.

C. SEWER MANHOLE:-

- THIS DRAWING TO BE READ IN CONJUNCTION WITH DRAWING 38574.
- RENDERING FOR MANHOLE BENCHING SHALL CONSIST OF 1 PART H.A.C. TO 2 PARTS SAND THOROUGHLY MIXED AND APPLIED TO CONCRETE SURFACES WHILE THE LATTER ARE STILL GREEN. RENDERING SHALL BE AT LEAST 20mm THICK.
- ALL PIPES BUILT INTO MANHOLES SHALL NOT EXCEED 1.0m IN LENGTH, AND AND THE ADJOINING PIPE SHALL NOT EXCEED 2.0m IN LENGTH.
- EVERY U.P.V.C. PIPE BUILT INTO A MANHOLE SHALL HAVE CLEAN DRY SAND (TO S.A.B.S. 1083 TABLE 1.) GLUED TO ITS OUTSIDE AS RECOMMENDED BY PIPE MANUFACTURER USING SPECIAL PVC CEMENT (HENKEL S.A. PTY. LTD. TANGIT OR SIMILAR) TO ENSURE GOOD ADHESION TO BASE CONCRETE.
- IN LOCATIONS DEFINED BY THE ENGINEER AS SUBJECT TO FLOODING, C.I. MANHOLE COVERS AND JOINTS SEALED WITH BOSTIK BUTYL TAPE OR SIMILAR, SHALL BE USED.

Revision	Date	Description
----------	------	-------------

NOTE: No construction work to commence until land and servitude acquisitions have been completed

Acquisitions
completed

Date _____ Engineer: _____

UNDERGROUND SERVICES CHECKED

S.W DRAINS

SEWERS

WATER MAINS

G.P.O CABLES

ELECTRIC CABLES

S.A.R. CABLES

E.S.C. CABLES

OIL PIPE LINE

NOTE: Only underground services affected by new construction work are shown.
Care must be taken during excavations for road foundations, trenches etc. to avoid damage to underground services such as sewers, drains, cables, water mains and connections, wherever possible these must be located before work proceeds.

Contract No _____

Project Title _____

STANDARD DRAWING

Drawing Title _____

RING MANHOLES

Scales _____ DATE OF ISSUE _____

1:10 FEBRUARY 1990

Designed _____ Date 1995-12-05

Checked _____ Drawn C.E.S.

Manager RD(N) _____

Director : Roads _____

R.A.Moore Executive Director

Drawing No 38570 Sheet _____

of _____ Sheets