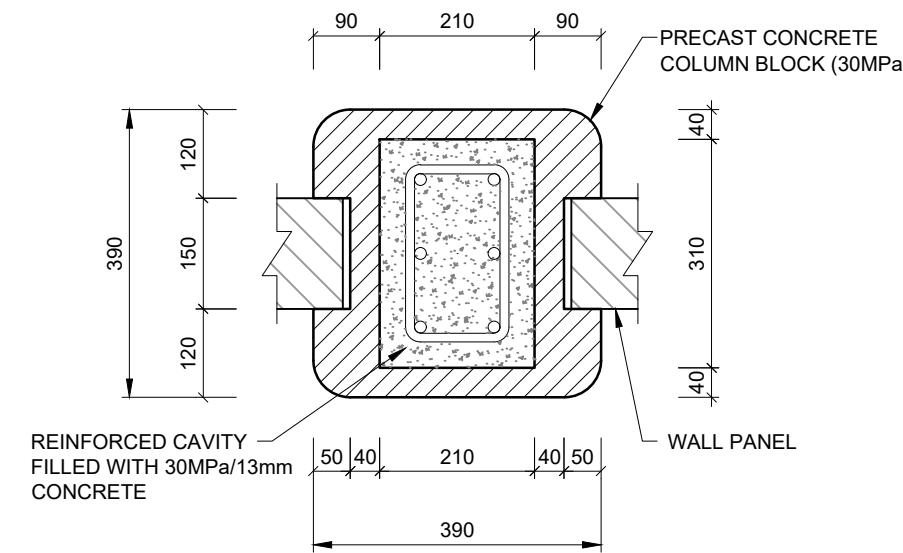
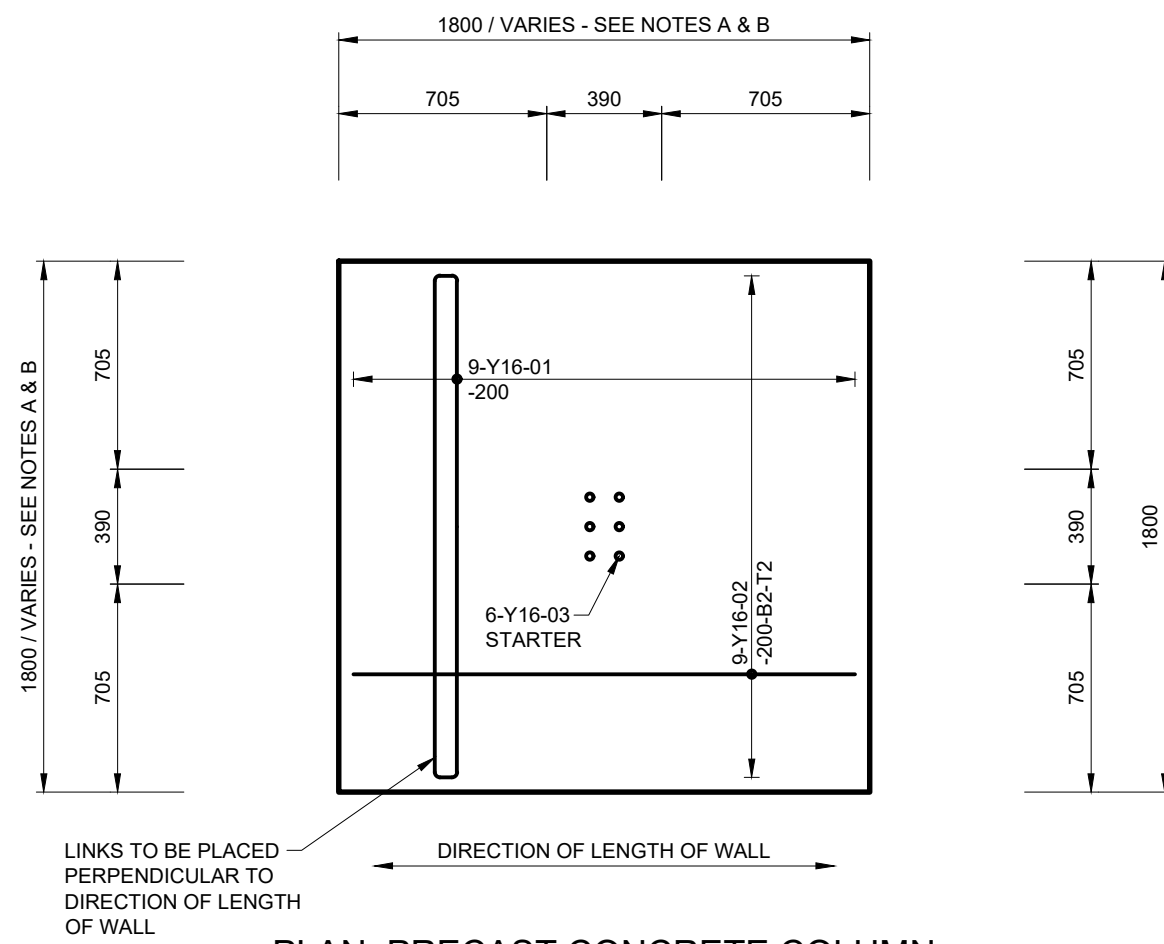


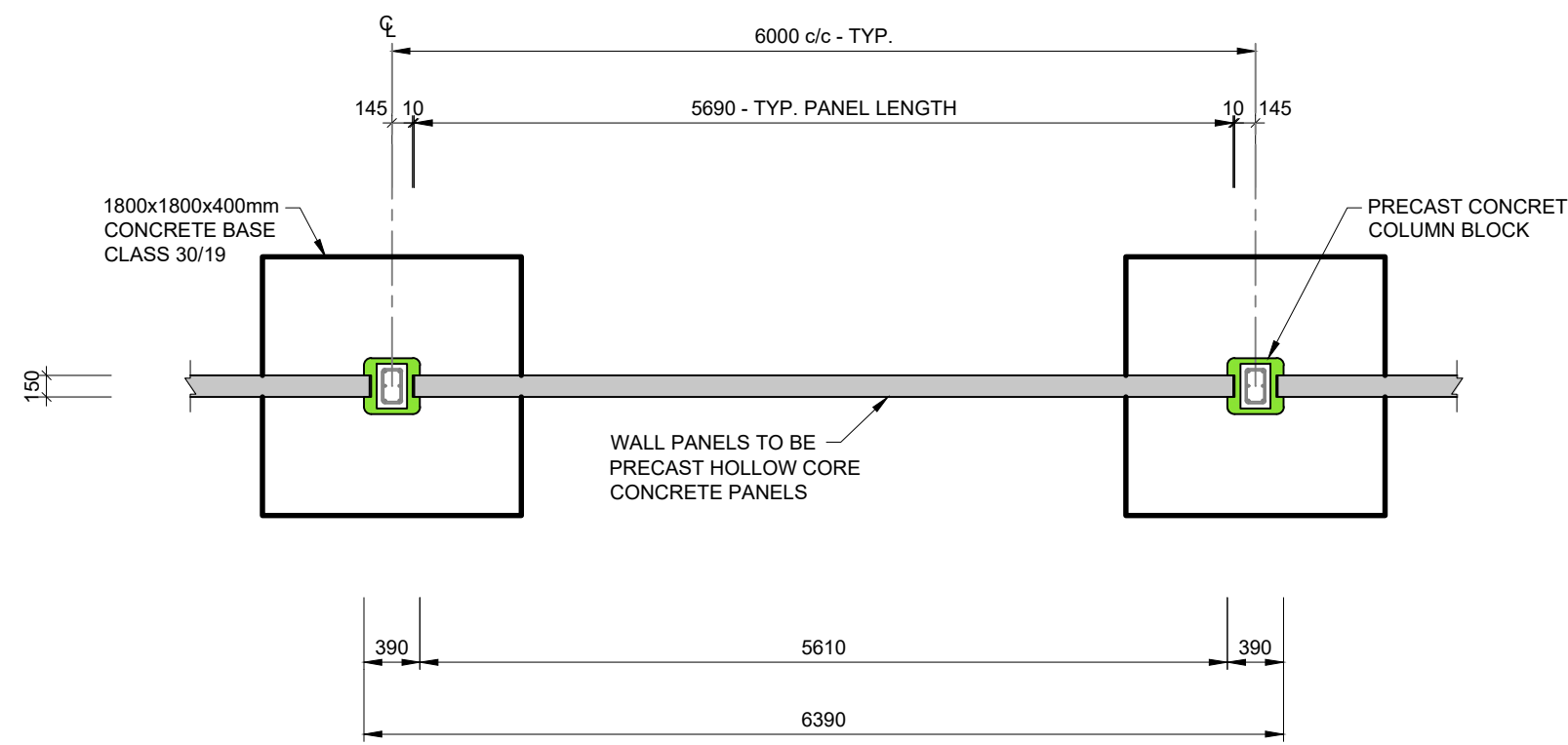
SECTION: PRECAST BLOCK COLUMN  
& BASE REINFORCING  
SCALE 1:25



PLAN: PRECAST CONCRETE  
COLUMN BLOCK  
SCALE 1:10



PLAN: PRECAST CONCRETE COLUMN  
BASE REINFORCING  
SCALE 1:25



PLAN: TYPICAL CONCRETE COLUMN & PANEL WALL  
LENGTHWISE TOP VIEW  
SCALE 1:50

OPTION: PRECAST CONCRETE COLUMNS WITH 150mm THICK PRECAST HOLLOW CORE WALL PANELS

- GENERAL NOTES:**
- HEIGHT OF WALL IS SITE SPECIFIC, APPOINTED CONSULTING ENGINEER TO CONFIRM DIMENSIONS, INCLUDING BASE DIMENSIONS.
  - TYPICAL DETAIL ISSUED FOR TENDER PURPOSES ONLY. THE APPOINTED DESIGN ENGINEER/CONSULTING ENGINEER IS TO CHECK ALL DESIGN DIMENSIONS AND REINFORCING REQUIREMENTS, TAKING INTO ACCOUNT GEOTECHNICAL CONDITIONS AND ENSURING COMPLIANCE WITH SANS 10400.

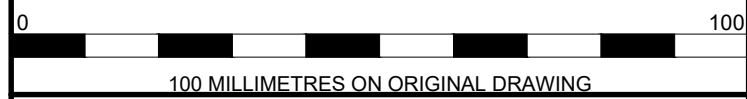
- NOTES:**
- CONCRETE STRENGTH: 30 MPa AT 28 DAYS.
  - COARSE AGGREGATE: 13mm.
  - REINFORCING COVER: 40mm.
  - PROPER CONCRETE SPACERS TO BE USED.
  - REINFORCING LAP LENGTH = 50 x Ø.
  - NO CONCRETE TO BE CAST WITHOUT THE APPROVAL OF THE ENGINEER.

- STEEL NOTES:**
- STEEL WORK ACCORDING TO SANS 2001 CSI.
  - STRUCTURAL STEEL GRADE S355JR ACCORDING SANS 431.
  - WELDING ACCORDING TO SABS 044.
  - ALL BOLTS Grade 8.8 HOT DIPPED GALVANIZED WITH WASHERS (NO ZINC ELECTROPLATED ACCEPTED).
  - STEELWORK TO BE HOT DIP GALVANIZED TO SANS 121 (ISO 1461).
  - WELDING: EDGES TO BE PROPERLY PREPARED ALL ROUND AND 8-10mm FILLET WELD TO BE USED ALL ROUND.
  - SHOP DRAWINGS MUST BE SUPPLIED TO THE ENGINEER FOR APPROVAL PRIOR TO MANUFACTURING.
  - ALL DIMENSIONS HAVE TO BE CHECKED ON SITE PRIOR TO MANUFACTURING!

- QUALITY CONTROL TESTS TO BE DONE**
- A. COMPACTION TESTS IN-SITU:**
- TROXLER TESTS REQUIRED SPREAD OUT OVER ALL NEW FLOOR AREAS, 150m<sup>2</sup> + 5 ADDITIONAL ONES.
  - TEST POSITIONS TO BE DETERMINE BY THE ENGINEER.
  - TESTS TO BE PERFORMED BY A SANAS APPROVED LABORATORY.
  - ALL COMPACTION RESULTS TO BE SUPPLIED TO THE ENGINEER AND MUST BE APPROVED BY THE ENGINEER BEFORE CONTINUING WITH THE SUBSEQUENT LAYERS.

- B. CONCRETE CUBE TESTS:**
- 1 SET OF CUBES (3) REQUIRED FOR EVERY 30m<sup>3</sup> (5 TRUCKS) OF CONCRETE PLACED.
  - SAMPLES TO BE TAKEN FROM DIFFERENT BATCHES AND RANDOMLY CHOSEN.
  - AT LEAST ONE SAMPLE SHALL BE TAKEN FROM EACH DAY'S PLACING OF DIFFERENT GRADES OF CONCRETE.
  - TESTS TO BE PERFORMED BY A SANAS APPROVED LABORATORY.
  - ALL CONCRETE TEST CUBES MUST BE SUPPLIED TO THE ENGINEER WITHIN 7 DAYS OF REACHING AGE (7 AND 28 DAYS) FOR APPROVAL.

## FOR TENDER



- BEFORE CONTRACT COMMENCES**
- AFTER CONTRACT HAS COMMENCED**

Nr.	DATE	AMENDMENTS

COPYRIGHT IS VESTED IN V3 CONSULTING ENGINEERS  
IN TERMS OF THE COPYRIGHT ACT (ACT 98 OF 1978)



**PROJECT**

SUPPLY, INSTALLATION & MAINTENANCE OF PRECAST PERIMETER WALL FOR CITY OF CAPE TOWN FACILITIES.

**DRAWING DESCRIPTION**

TYPICAL DETAIL: PRE-CAST CONCRETE PERIMETER WALL WITH CONCRETE COLUMN

**DRAWING NO.**

10515036-C-601

0

DESIGNED: DT	CHECKED: DT
DRAWN: KS	SCALE: AS SHOWN A1
APPROVED:	DATE: 2020-10-15
FILE PATH:	Sharepoint \Cape Town - 10515000_CoCTWTP195_Bishops Lavis Sport Ground - 10515036\05 Constr\01 Office\05 Draw