

## NOTES

### INTERNAL WALLS -

SINCE SOME INTERNAL WALLS ARE FACE BRICK UP TO DADO LEVEL, ALL WATER, ELECTRICAL AND GAS INSTALLATIONS TO BE DISCUSSED AND AGREED ON SITE PRIOR TO ERECTION OF WALLS.

WATER, ELECTRICAL AND GAS INSTALLATIONS TO BE BUILT INTO FACE BRICK WALLS WHERE NEEDED AS NO CHASING CAN BE DONE AFTER CONSTRUCTION THEREOF

NO SURFACE MOUNTED SERVICES ARE ALLOWED, APPROPRIATE "S/S 1216 COMPOSITE PIPE" TO BE USED WHEN PIPING IS INSTALLED WITHIN WALLS AND FLOOR SLABS. INSTALLATION TO BE DONE BY CERTIFIED GAS INSTALLER.

### FURNITURE -

FOR LOOSE AND FIXED FURNITURE REFER TO FURNITURE SCHEDULE AND JOINERY DRAWINGS.

### STORM WATER

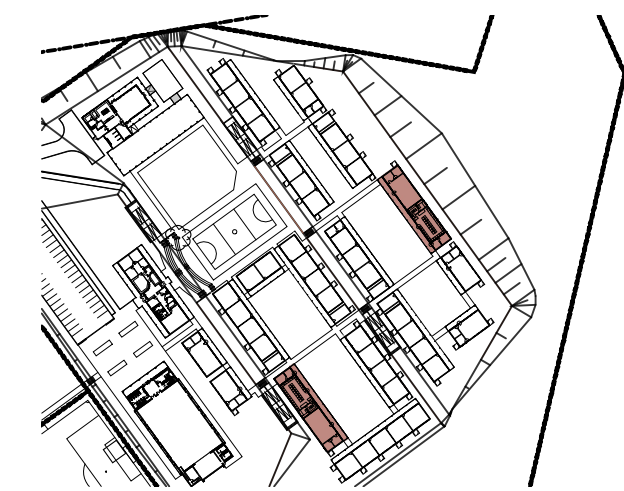
POSITION OF TANKS AND CONCRETE RAINWATER CHANNEL TO SUIT SITE CONDITIONS AS PER SITE LAYOUTS TO ACCOMMODATE STORMWATER AND OVERFLOW, TO CIVIL ENG'S DESIGN AND DETAIL

### TRUSS

TRUSS MANUFACTURE TO SUBMIT A WORKSHOP DRAWING FOR APPROVAL

ISSUED FOR APPROVAL

### KEY



### PSP

### ARCHITECT



ARCHITECTURAL PROFESSIONAL SACAP NUMBERS:  
**H.L. MANTEL SACAP 3045**

IMPLEMENTED BY

**INDEPENDENT DEVELOPMENT TRUST**

SIGNATURE	DATE	SHEET NO.
DESIGNED -	-	SCALE: <b>1:100</b>
DRAWN OM	06/10/2021	STATUS: LENDING
VERIFIED -	-	1 = INFORMATION
VALIDATED -	-	FM = FOR MEASURE
		T = TENDER
		C = CONSTRUCTION
		AB = AS BUILT

### CLIENT



### IMPLEMENTING AGENT



**PROJECT**  
**DOE PORTFOLIO PROGRAMME**  
**ESTABLISHMENT OF NEW SCHOOLS**  
**HILLBROW - SENIOR SECONDARY SCHOOL**  
PROVINCE: EASTERN CAPE PROVINCE

DRAWING TITLE  
**COMPUTER CENTRE + HOD + LIBRARY**  
**PLAN & SEC-AA**  
**(BLOCK S-H & S-J)**

DRAWING DESCRIPTION  
**COM+HOD**

EMIS NUMBER	DISCIPLINE	DRAWING NUMBER	STATUS	REVISION
200500293	ARCH	2204 w01 06/200	FA	AB