

TENDER'S BRIEFING SESSION

**VENUE: OWN WORKPLACE
(ONLINE PRESENTATION)**

DATE: 26 APRIL 2024

SANRAL



**BUILDING SOUTH AFRICA
THROUGH BETTER ROADS**

TENDER BRIEFING FOR:

Contract Number	Description
N.002-110-2024/2F	FOR CONSULTING ENGINEERING SERVICES FOR SPECIAL MAINTENANCE OF N2 SECTION 11 FROM SOUTWERKE (KM 50.7) TO COLCHESTER (KM 68.0)

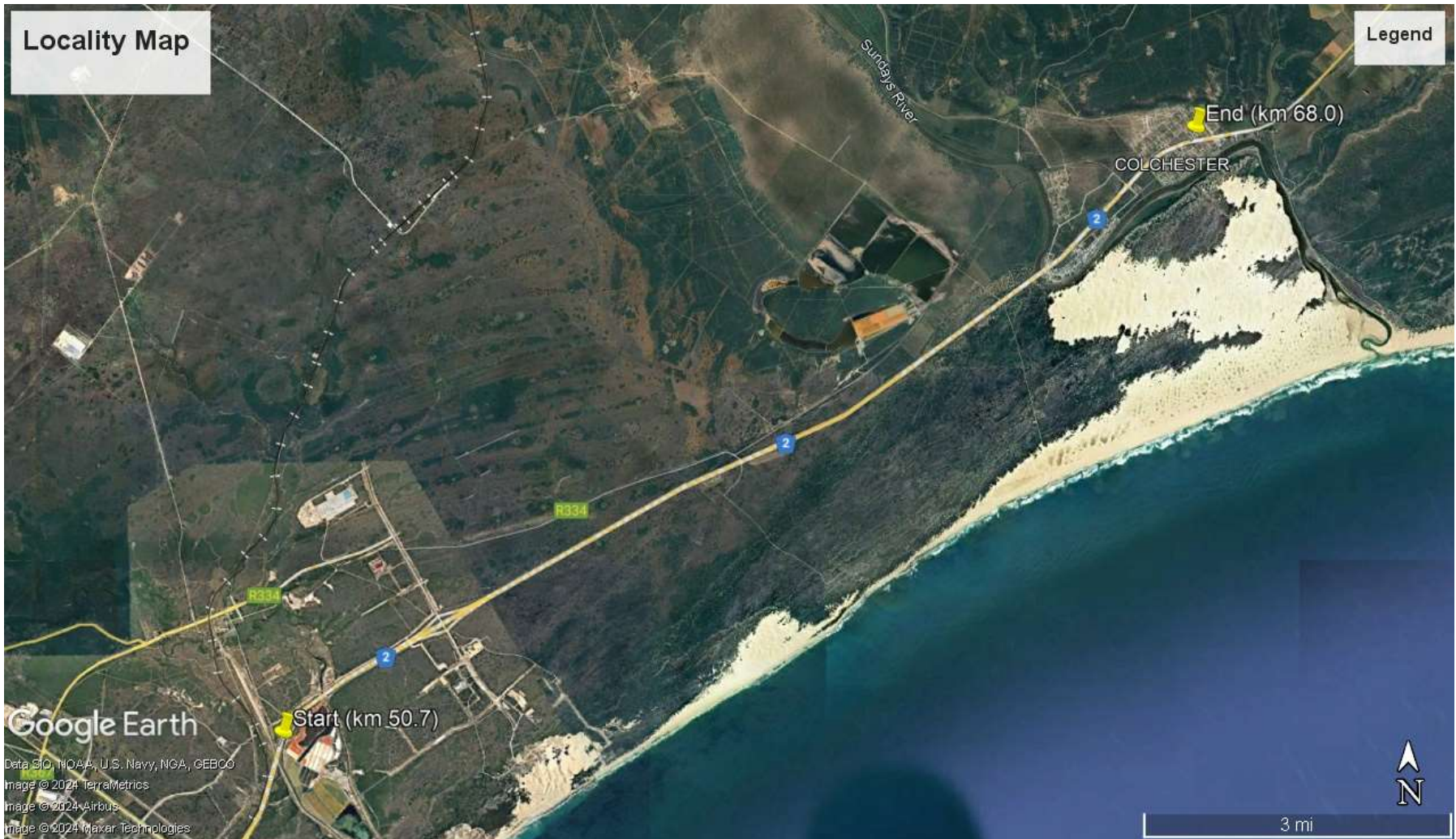
N.002-110-2024/2F

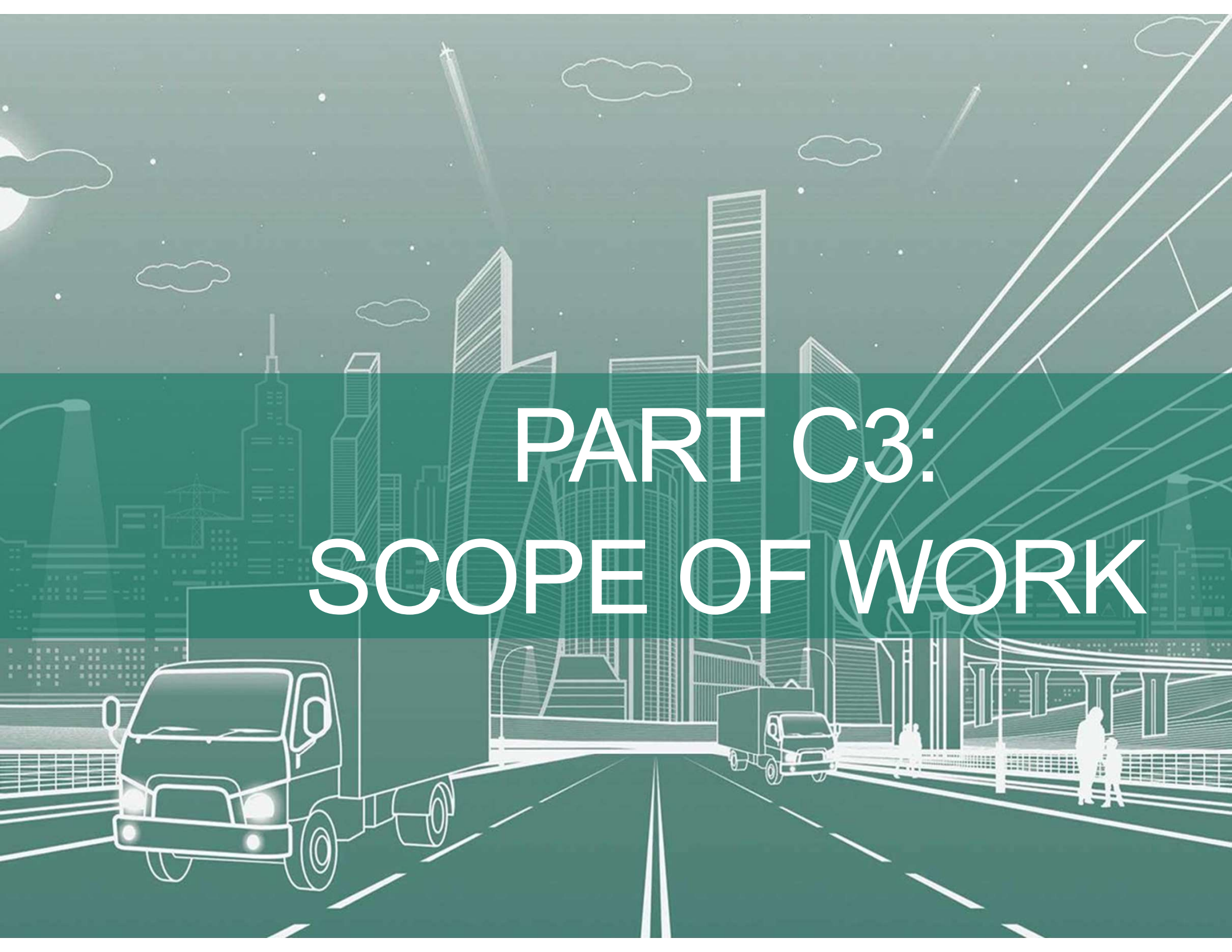
The proposed project is for the provision of **CONSULTING ENGINEERING SERVICES FOR SPECIAL MAINTENANCE OF N2 SECTION 11 FROM SOUTWERKE (KM 50.7) TO COLCHESTER (KM 68.0)**.

This project is in the province of Eastern Cape. It falls under the Metropolitan Municipality of Nelson Mandela Bay.

The project is currently classified by SANRAL as a **MSPGA**.

LOCALITY MAP





PART C3: SCOPE OF WORK

OVERVIEW OF THE CONSTRUCTION WORKS

The works contract scope of work can generally be described by the following operations:

Special Maintenance: The works will most probably take the form of rehabilitation/strengthening of certain areas over the project length while the remaining length will require a periodic maintenance. The periodic maintenance will most probably take the form of appropriate localised repair and pre-treatment of the existing surface followed by the construction of an appropriate surface seal and/or asphalt overlay.

PARTICIPATION OF TARGETED ENTERPRISE(S)

11.7 It is a condition of this contract that the Service Provider sub-contracts a minimum of 30% of Targeted Enterprise/s.

- *Minimum sub-contract requirement for all entities is 30%.*

5.1.7 It is encouraged that Local Targeted Enterprises from the Eastern Cape Province participate in a minimum of 1/3 (one third) of the specified percentage of the Contract Price (excluding provisional)

C3.1.19 Participation of Targeted Enterprise(s)

The Employer may stipulate the involvement of Targeted Enterprise(s) in the project design and construction as a mechanism to broaden the economic share of the national spend on engineering services and as a means to hasten and improve the transfer of technical skills.

The Service Provider's Targeted Enterprise(s) become a contractual commitment upon award.

- a) The Targeted Enterprise(s) shall be involved throughout the project stages and the percentage tendered in the Contract Data shall be applicable to actual work split (excluding all provisional and prime cost sums but including site staff salaries) amongst the following stages:
- Project Assessment stage
 - Investigation for Design Development
 - Design Development stage
 - Tender Documentation
 - Clarification Meeting, Tender Period & Tender Evaluation
 - Administration and Monitoring of the Works
 - Additional duties, special services, and specialist advice
 - Quality control
 - Close out
- b) The use of Targeted Enterprise personnel as site staff during the administration and monitoring of the Works phase is included as part of the percentage tendered in the Contract Data.

WORK TYPES

Table C3.1.4(b): Percentage points for phases/stages: Road Works, Structures, Building and Other

Type of Service	Concept Design (CD)	Preliminary Design (PD)	Detailed Design (DD)	Administration & Monitoring of works contract (AMW)	Close out (CO)	Total
Full service	5%	21%	42%	27%	5%	100%
CD	100%	0%	0%	0%	0%	100%
CD & PD	20%	80%	0%	0%	0%	100%
CD, PD& DD	8%	31%	61%	0%	0%	100%
PD	0%	100%	0%	0%	0%	100%
PD & DD	0%	33%	67%	0%	0%	100%
DD, AMW, CO	0%	0%	63%	31%	6%	100%
PD, DD, AMW, CO	0%	22%	44%	28%	6%	100%
AMW & CO	0%	0%	0%	83%	17%	100%

This Project will consist of the following work types and project phases:

- *Roadworks* – PD, DD, AMW, & CO

WORKS ESTIMATE

C3.1.5 Employer's Cost Estimate

For the purposes of this project, the current budget for the Works is based on MSPGA. The estimated costs of the different construction work types with a construction start date of May 2027 are provided below:

Road works	R 596 850 000.00
(EST) Total project value (excluding contingencies, CPA during the construction period and VAT)	R 596 850 0000.00

NB: For this project, HDM-4 economic analysis will not be required.

ESTIMATED PROJECT TIMELINES

Table 3.1.9: Project Programme

	Project Stage/Phase	Stage/Phase Completion Date
A	Submission of Tenders / Proposals	June-24
B	Appointment of Service Provider	Dec-24
C	Project Hand-over meeting	Jan-25
D	First Progress meeting	Feb-25
E	Submission of draft Assessment Report	Apr-25
F	Submission of draft Concept Design Report	
G	Submission of draft Preliminary Design Report	Sep-25
H	Submission of Gateway Review Report (if applicable)	
I	Submission of Road Safety Audit Report: Stage 1 Feasibility and Preliminary Design	Aug-25
J	Submission of draft Detailed Design Report including Structures, Drainage & Geotechnical Reports	Dec-25
K	Submission of Road Safety Audit Report: Stage 3: Detail Design	N/A
L	Submission of design information to SANRAL's Property Service Provider (PSP) for land acquisition purposes	N/A
M	Submission of Basic Assessment Report or full EIA report	N/A
N		N/A
O		N/A
P	Submission of WULA to approving authority	N/A
Q	Submission of EMP's to approving authority	N/A
R	Submission of Draft Tender Documents for the Works and final Detailed Design Reports	Jun-26
S	Tender Advertisement	Aug-26
T	Submission of Final Tender Documents for the Works	Jul-26
U	Clarification Meeting	Aug-26
V	Tender Closure	Sep-26
W	Submission of Tender Evaluation Report	Nov-26
X	Works Contract Handover	May-27
Y	Submission of draft Contract Report & as-built data	Within 3 months of issue of Taking-over Certificate for the Works
Z	Submission of final Contract Reports and as-built data	Within 1 month of issue of Performance Certificate for the Works

KEY PERSONS

The Key Persons required for this project are:

- **Project Leader** (shall be in permanent employment of the tendering entity or Targeted Enterprise).
- **Design Specialist (Pavement and Materials Engineer)**

The additional design specialists and assistants to the Project Leader and Design Specialists other than Key Persons for this project are:

- **Design Specialist (Traffic Engineer)**
- **Design Specialist (Geotechnical Engineer)**

Please take note Contracts Engineer is no longer part of Key Persons



PART C4: SITE INFORMATION

SITE INFORMATION

TABLE 4.2

DESCRIPTION	CURRENT	ENVISAGED
Project limits	N2/11: ± km 50.7 – ± km 68.0 Total Length = 17.3km	No change
Intersections	<u>Major Intersections:</u> N2/Barkly Road ± km 66.7 <u>Minor Intersections:</u> <u>None</u>	No change
Interchange	N2/R334 ± km 54.0	No change
TRH 4 Road Category	A: 4 lane divided dual carriageway	A: 4 lane divided dual carriageway
Design speed	120km/h	No change
Level of service	B to C	No change
I/C capacity	To be determined	To be determined
Cross section	Main carriageways: ± 11,4 m = Gravel shoulder: 3m Lanes: 2 x 4.2m V drain on the median	Main carriageways: ± 11,4 m = Gravel shoulder: 3m Lanes: 2 x 4.2m V drain on the median
Surface area	Main Carriageway: Asphalt pavement ± 197 220 m ² Both carriageways = 394440 ± m ²	No change

SITE INFORMATION (CONT.)

C.4.3 TRAFFIC INFORMATION

Traffic information is available in SARDS online.

C.4.4 PAVEMENT INFORMATION

Pavement information is available in SARDS online.

C.4.5 GEOTECHNICAL

TABLE 4.5

DESCRIPTION	CURRENT	ENVISAGED
N2 Section 11 km 50.7– km 68.0	At Sunday's River Bridge, noticeable sagging has been observed, indicating the need for investigation.	Investigation

C.4.6 MATERIAL SOURCES

Material sources for natural/crushed gravel for earthworks, layer works, asphalt and concrete layers will have to be identified and proved. Dependant on the quantities of each, it may be cost effective to source some, or all, materials from commercial sources. Provision has been made in the Pricing Schedule for investigations of any potential hard rock or gravel sources.

TABLE 4.6

DESCRIPTION	CURRENT	ENVISAGED
Asphalt aggregate	Commercial/ designated	Quarry investigations
Concrete aggregate	Commercial/ designated	1 Quarry investigation
Gravel materials	Commercial and or borrow pits	1 or 2 investigations dependant on quantities required

C.4.7 LAND REQUIREMENTS

TABLE 4.7

DESCRIPTION	CURRENT	ENVISAGED
Permanent land acquisition	Remaining within road reserve	Not required
Temporary land requirements	None	No Change

C.4.8 ENVIRONMENTAL REQUIREMENTS

TABLE 4.8

DESCRIPTION	CURRENT	ENVISAGED
EIA	Remaining within existing road reserve	Not Required
EMP	None	Not Required

SITE INFORMATION (CONT.)

C.4.3 TRAFFIC INFORMATION

Traffic information is available in SARDS online.

C.4.4 PAVEMENT INFORMATION

Pavement information is available in SARDS online.

C.4.5 GEOTECHNICAL

TABLE 4.5

DESCRIPTION	CURRENT	ENVISAGED
N2 Section 11 km 50.7– km 68.0	At Sunday's River Bridge, noticeable sagging has been observed, indicating the need for investigation.	Investigation

C.4.6 MATERIAL SOURCES

Material sources for natural/crushed gravel for earthworks, layer works, asphalt and concrete layers will have to be identified and proved. Dependant on the quantities of each, it may be cost effective to source some, or all, materials from commercial sources. Provision has been made in the Pricing Schedule for investigations of any potential hard rock or gravel sources.

TABLE 4.6

DESCRIPTION	CURRENT	ENVISAGED
Asphalt aggregate	Commercial/ designated	Quarry investigations
Concrete aggregate	Commercial/ designated	1 Quarry investigation
Gravel materials	Commercial and or borrow pits	1 or 2 investigations dependant on quantities required

C.4.7 LAND REQUIREMENTS

TABLE 4.7

DESCRIPTION	CURRENT	ENVISAGED
Permanent land acquisition	Remaining within road reserve	Not required
Temporary land requirements	None	No Change

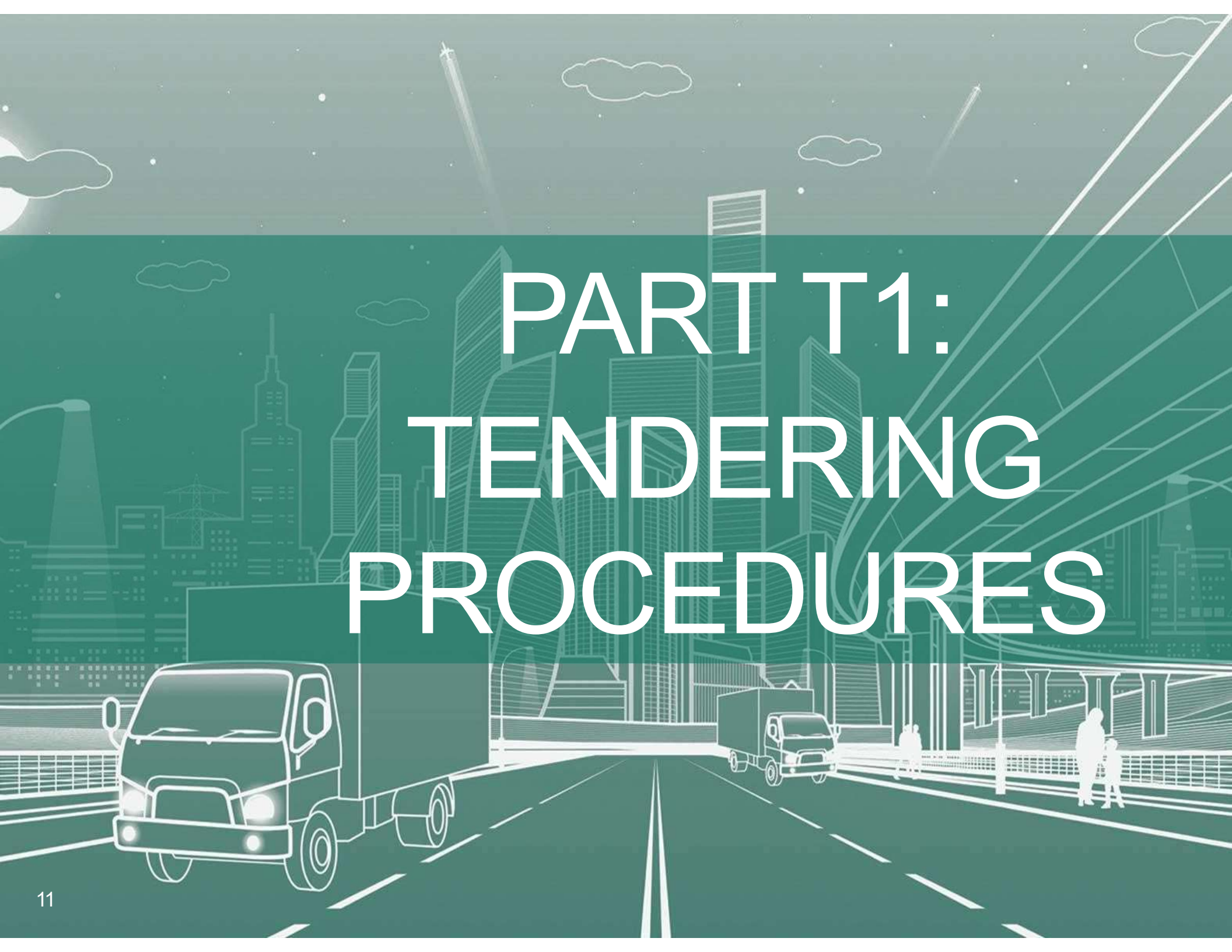
C.4.8 ENVIRONMENTAL REQUIREMENTS

TABLE 4.8

DESCRIPTION	CURRENT	ENVISAGED
EIA	Remaining within existing road reserve	Not Required
EMP	None	Not Required

SITE INFORMATION (CONT.)

- Refer to SARDS (Road Design System)
- <https://itis.nra.co.za/Portal>
- Register on Tenders



PART T1: TENDERING PROCEDURES

PART T1.1: TENDER NOTICE AND INVITATION TO TENDER

T1.1 TENDER NOTICE AND INVITATION TO TENDER (Incorporating SBD1)

CLOSING DATE (AT 11:00): Friday, 07 June 2024

The South African National Roads Agency SOC Limited (SANRAL) invites tenders for the provision of **CONSULTING ENGINEERING SERVICES FOR SPECIAL MAINTENANCE OF N2 SECTION 11 FROM SOUTWERKE (KM 50.7) TO COLCHESTER (KM 68.0)**. This project is in the province of Eastern Cape. It falls under the Metropolitan Municipality of Nelson Mandela Bay and the approximate programme is for design and construction documentation to be completed by July 2026, followed by supervision of 14 months, commencing May 2027.

Only tenderers who are registered on the National Treasury Central Supplier Database and meet the minimum requirements for the key persons as stipulated in Clause C.2.1 at the tender closing date, are eligible to tender.

Joint Ventures (JV) will be allowed on condition that one JV partner is a Targeted Enterprise. The JV partner will, however, not contribute to sub-contract target for Targeted Enterprises.

PART T1.1: TENDER NOTICE AND INVITATION TO TENDER

TENDER DOCUMENTS

Tender documents are available from **26 April 2024**, at no cost, in electronic format downloadable from the SANRAL's website by following the link: https://www.nra.co.za/sanral-tenders/status?region_id=national. Tenderers must have access to Microsoft Office 2013 and Acrobat Adobe © 9.0 or similar compatible software.

Tenderers must submit, via email, the duly completed Form A1.1 Certificate of Intention to Submit a Tender prior to **10 May 2024**. Failure to submit this certificate would result in the tenderer not receiving addenda or additional issued information and may result in the tenderer being non-responsive, if "any material amendment/s" contained in the addenda or additional information is not included in the tender offer/submission.

|

TENDERER'S MEETING

No clarification meeting

A tenderer's clarification briefing presentation is available to be downloaded from the SANRAL website by the following link https://www.nra.co.za/sanral-tenders/status?region_id=national

PART T1.1: TENDER NOTICE AND INVITATION TO TENDER

COMPLETION AND DELIVERY OF TENDERS

The closing time for receipt of tenders is **11:00 on Friday, 07 June 2024**.

Telegraphic, telephonic, telex, e-mail, facsimile and late tenders will not be accepted.

Tenders may only be submitted in the format as stated in the Tender Data.

Requirements for completing, sealing, addressing, delivery, opening and assessment of tenders are stated in the Tender Data.

Queries relating to issues arising from these documents may be addressed to:

e-mail: procurementSR6@sanral.co.za

Part T1.2: CONDITIONS OF TENDER

T1.2 CONDITIONS OF TENDER

Note to tenderer:

The conditions of tender are the standard conditions of tender as contained in Annexure C of the CIDB STANDARD FOR UNIFORMITY IN ENGINEERING AND CONSTRUCTION WORKS CONTRACTS as per Government Notice No. 423 published in Government Gazette No. 42622 of 08 AUGUST 2019 and as amended from time to time. (see www.cidb.org.za).

<https://www.cidb.org.za/wp-content/uploads/2021/07/Standard-for-Uniformity-August-2019.pdf>

The standard conditions of tender make several references to the tender data for details that apply specifically to this tender. The tender data shall have precedence in the interpretation of any ambiguity or inconsistency between the tender data and the standard conditions of tender.

Each item of data given below is cross-referenced to the clause marked "C" in the above-mentioned Standard Conditions of Tender.

PART T1.3: TENDER DATA

C.2.1	<p>Eligibility</p> <p>Only those tenderers who satisfy the following criteria are eligible to submit tenders:</p> <ul style="list-style-type: none">(a) Meet the minimum requirements for the key persons as stated in the Scope of Works in Clause C.3.1.11: Personnel requirements; excluding 3.1.11(f), which is dealt with under Tender Data C.3.13(k).(b) Registered on National Treasury Central Supplier Database. <p>Tenderers, or in the event of a Joint Venture or a Targeted Enterprise, each member of the Joint Venture or Targeted Enterprise, shall be registered on the National Treasury Central Supplier Database at the closing date for tender submissions. If not registered as verified online at tender closing, the tenderer will be declared non-responsive.</p> <p>Failure to satisfy the eligibility criteria will result in a non-responsive tender.</p>
-------	---

Tenderers should take note of Clause C2.16.1 – The tender offer validity period is 180 days.

PART T1.3: TENDER DATA CONT...

C.3.5	<p>Two-envelope system</p> <p>The minimum percentage of evaluation points for quality is not less than 80%.</p> <p>Reasons for non-responsive/not achieving the threshold will only be communicated when the tender process is concluded, in terms of Clause C.3.16 of the Tender Data. The scores obtained for the non-financial proposals will not be announced at the opening of the financial offers/proposals.</p> <p>The time for opening of the financial offers via live streaming shall be communicated to all tenderers having achieved the minimum number of points for quality as prescribed.</p> <p>The financial offer of all tenderers who failed to achieve the minimum number of points for quality shall be returned unopened.</p>
-------	--

ELIGIBILITY FOR PREFERENCE POINTS

C.3.11	Evaluation of tender offers														
	<p>Evaluating quality / functionality</p> <p>The quality criteria and maximum score (including the relevant returnable schedule to calculate the score) in respect of each of the criteria are as follows: A detailed explanation of the evaluation scoring is provided further in this document as <u>"SANRAL – EXPLANATION OF CONSULTANT TENDER EVALUATION SCORING FOR CONVENTIONAL PROJECTS"</u></p> <table border="1" data-bbox="520 737 1879 1157"> <thead> <tr> <th data-bbox="520 737 1598 837">Description of quality criteria</th> <th data-bbox="1598 737 1879 837">Maximum number of Tender evaluation points</th> </tr> </thead> <tbody> <tr> <td data-bbox="520 837 1598 886">Technical experience comparable projects (Form B1)</td> <td data-bbox="1598 837 1879 886">30</td> </tr> <tr> <td data-bbox="520 886 1598 935">Managerial ability in comparable projects (Form B2)</td> <td data-bbox="1598 886 1879 935">15</td> </tr> <tr> <td data-bbox="520 935 1598 984">Workplan Appropriateness (WA) to the size and nature of the work (Form C2.4)</td> <td data-bbox="1598 935 1879 984">30</td> </tr> <tr> <td data-bbox="520 984 1598 1057">Quality assurance systems which ensure conformance to Employer's stated requirements (Form B4)</td> <td data-bbox="1598 984 1879 1057">10</td> </tr> <tr> <td data-bbox="520 1057 1598 1105">Past performance experience on reference projects (Form B6)</td> <td data-bbox="1598 1057 1879 1105">15</td> </tr> <tr> <td data-bbox="520 1105 1598 1157">Total evaluation points for quality (M_S)</td> <td data-bbox="1598 1105 1879 1157">100</td> </tr> </tbody> </table> <p>The minimum number of evaluation points for quality is not less than 80%.</p>	Description of quality criteria	Maximum number of Tender evaluation points	Technical experience comparable projects (Form B1)	30	Managerial ability in comparable projects (Form B2)	15	Workplan Appropriateness (WA) to the size and nature of the work (Form C2.4)	30	Quality assurance systems which ensure conformance to Employer's stated requirements (Form B4)	10	Past performance experience on reference projects (Form B6)	15	Total evaluation points for quality (M _S)	100
Description of quality criteria	Maximum number of Tender evaluation points														
Technical experience comparable projects (Form B1)	30														
Managerial ability in comparable projects (Form B2)	15														
Workplan Appropriateness (WA) to the size and nature of the work (Form C2.4)	30														
Quality assurance systems which ensure conformance to Employer's stated requirements (Form B4)	10														
Past performance experience on reference projects (Form B6)	15														
Total evaluation points for quality (M _S)	100														

ELIGIBILITY FOR PREFERENCE POINTS (CONT.)

Note: Tenderer to note Key Persons as listed below. Contracts Engineer is NO longer under Key Persons

When a proposed candidate for any position is not in the permanent employ of the tenderer but a contracted person, this must be indicated on form B2 and a signed letter of consent from the candidate must be submitted with the relevant B-forms. When a proposed candidate for any position is a permanent staff member of the tenderer, this must be indicated on Form B2, and a signed letter of confirmation must be submitted with the relevant B-forms.

The following key persons shall form part of the quality criteria:

Project Leader shall be a permanent staff member of the tenderer
Design Specialist: Pavement and Materials Engineer

Other required resources (Design Specialist(s))

Additional required resources (Design Specialist(s)) other than Key Persons for this project is as follows:

Design Specialist: Traffic Engineer
Design Specialist: Geotechnical Engineer

SANRAL



THANK YOU

