

TENDERER'S CLARIFICATION BRIEFING PRESENTATION

**CONTRACT SANRAL R.033-130-2019/3C-SL
FOR THE UPGRADING OF NATIONAL ROAD
R33 SECTION 13 IN VAALWATER TOWN
(KM 60.8 TO KM 63.0)**

25 JANUARY 2024



SMEC
South Africa

Member of the Surbana Jurong Group

SANRAL



**BUILDING SOUTH AFRICA
THROUGH BETTER ROADS**

AGENDA

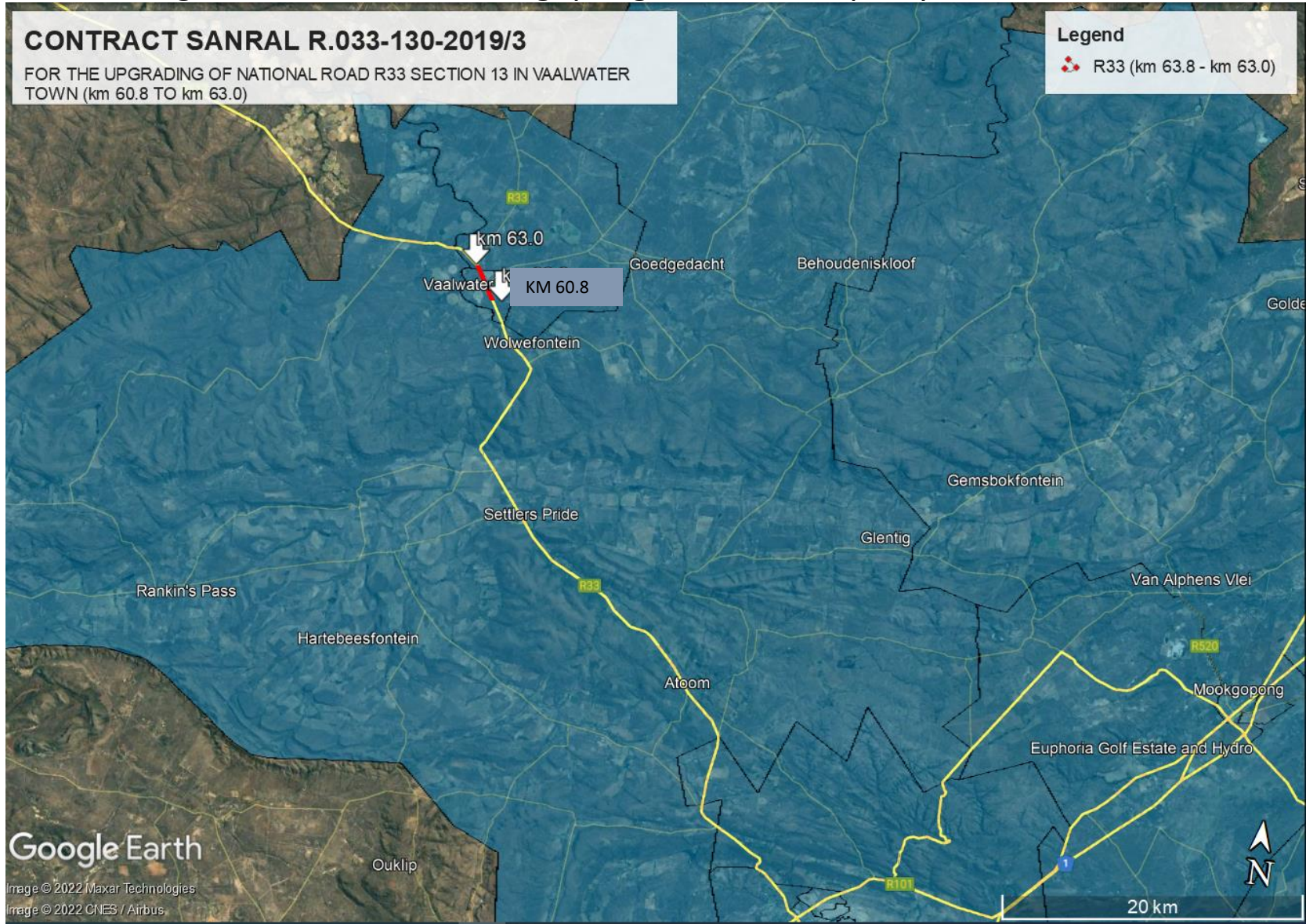
- Welcome
- Overview of the tender documents
- Overview of project
- Scope of works

DISCLAIMER

- Any pertinent queries raised during the tender period will be confirmed in writing in the form of an addendum to the contract documents.
- The information contained in the tender clarification presentation details is essentially a summary of the contents of the contract documents.
- No additional or contradictory information contained herein or the tender period shall form part of the contract, and only the contract document and addenda thereto shall be binding on the contract.

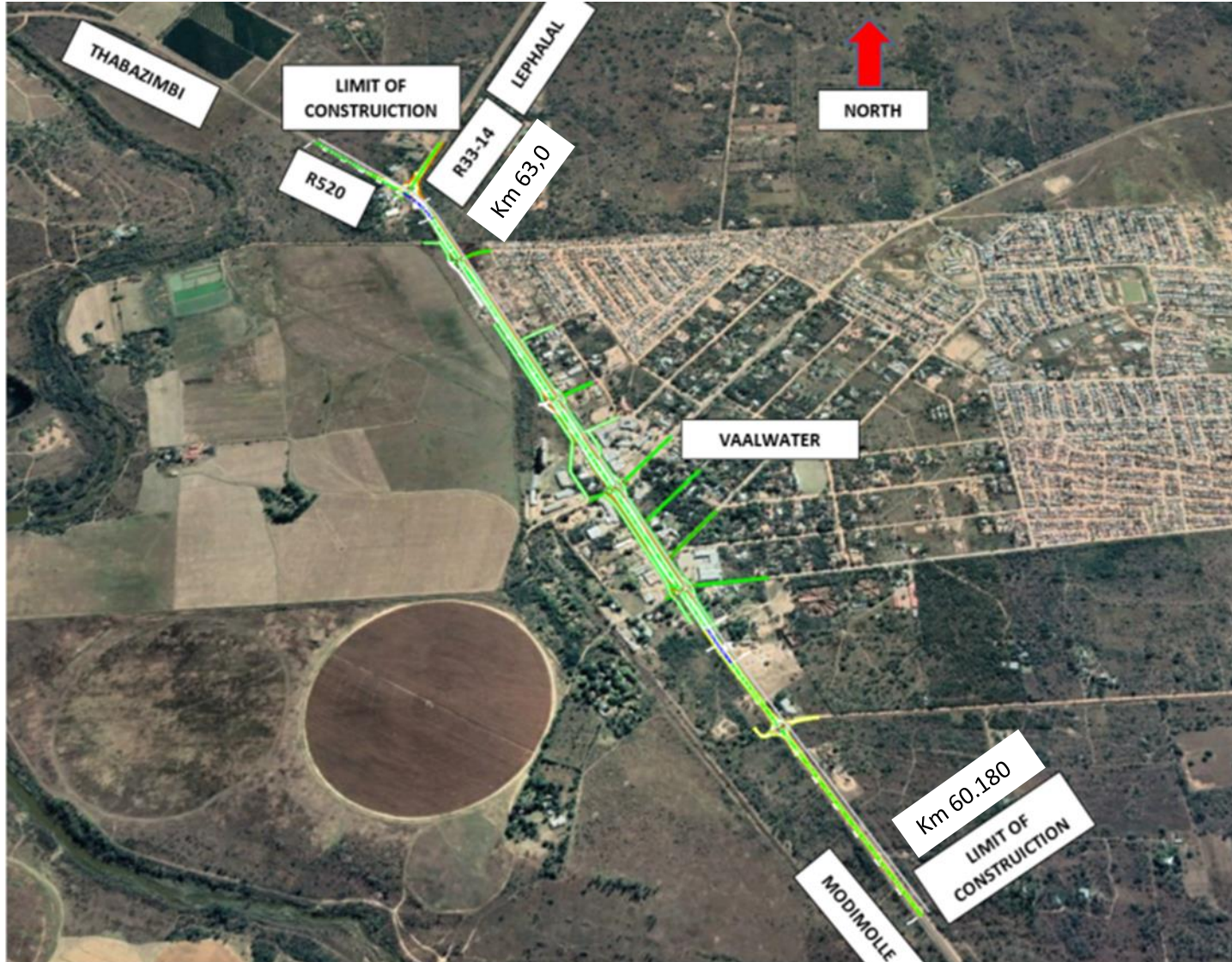
LOCALITY MAP

The project is located in the province of Limpopo in the District Municipality of Waterberg and Modimolle-Mookgopong Local Municipality.



LOCALITY MAP

The project is located in the province of Limpopo in the District Municipality of Waterberg and Modimolle-Mookgopong Local Municipality.



LIST OF DOCUMENTS

VOLUME	DESCRIPTION	OBTAINABLE FROM
1	The Project Document, containing the tender notice, Conditions of Tender, Tender Data, Returnable Schedules, general and particular conditions of contract, project specifications, Pricing Schedule, Form of offer and Site Information is issued by the Employer.	Issued at tender stage in electronic format downloaded from the SANRAL's website www.nra.co.za .
2	The conditions of tender are the standard conditions of tender as contained in Annexure C of the CIDB STANDARD FOR UNIFORMITY IN ENGINEERING AND CONSTRUCTION WORKS CONTRACTS as per Government Notice No. 423 published in Government Gazette No. 42622 of 08 AUGUST 2019 and as amended from time to time. (see www.cidb.org.za).	On CIDB website https://www.cidb.org.za/wp-content/uploads/2021/07/Standard-for-Uniformity-August-2019.pdf

Tender Document Sections

- T1.1 Tender Notice and Invitation to Tender
- T.1.2 Conditions of Tender
- T.1.3 Tender Data
- T.2 Returnable Schedules
- C1 Agreement and Contract Data
- C2 Price Data
- C3 Scope of the Works
- C4 Project Information



Part T1.1: Tender Notice and Invitation to Tender

Part T1.1: Tender Notice and Invitation to Tender

This project is in the province of Limpopo and in the district municipality of Waterberg and the approximate duration is 15 months, commencing March 2024.

Preferences are offered to tenderers who comply with the criteria stated in the Tender Data.

The tenderers will be evaluated on functionality (quality) criteria with a threshold of 75%.

Only tenderer who are a Joint Ventures (JV), meet the minimum requirements for the key persons and are registered on CSD as stated in clause C 2.1 will be eligible to tender.

Tender documents are available from 25 January 2024 *at no cost in electronic format downloadable from the SANRAL's website* by following the link: https://www.nra.co.za/sanral-tenders/status?region_id=national . Tenderers must have access to Microsoft © Office 2013 and Acrobat Adobe © 9.0 or similar compatible software.

Tenderers must submit, via email, the duly completed Form A1.1 Certificate of Intention to Submit a Tender prior to **05 February 2024** Failure to submit this certificate would result in the tenderer not receiving addenda or additional issued information and may result in the tenderer being non-responsive.

No clarification meeting.

Part T1.1: Tender Notice and Invitation to Tender

COMPLETION AND DELIVERY OF TENDERS

The closing time and date for receipt of tenders is 11:00 on **15 February 2024**.

Telegraphic, telephonic, telex, e-mail, facsimile and late tenders will not be accepted.

Tenders may only be submitted in the format as stated in the Tender Data.

Requirements for completing, sealing, addressing, delivery, opening and assessment of tenders are stated in the Tender Data.

Queries relating to issues arising from these documents may be addressed to:
e-mail: henk.diedericks@smec.com



Part T1.2: Tender Data

Conditions of Tender

The conditions of tender are the standard conditions of tender as contained in Annexure C of the CIDB STANDARD FOR UNIFORMITY IN ENGINEERING AND CONSTRUCTION WORKS CONTRACTS as per Government Notice No. 423 published in Government Gazette No. 42622 of 08 AUGUST 2019 and as amended from time to time. (see www.cidb.org.za).

Part T1.2: Tender Data

Clause Number	Compilation of Tender Document
C.1.1	<p>Actions</p> <p>The Employer is SMEC South Africa (Pty) Ltd. The Employer's domicilium citandi et executandi (permanent physical business address) is:</p> <p>SMEC Centre 230 Albertus street La Montagne 0184</p> <p>The Employer's address for communication relating to this project is: PO Box 72927 Lynnwood Ridge 0040</p>

Part T1.2: Tender Data

Clause Number	Compilation of Tender Document
C.1.2	<p>Tender Documents</p> <p>The tender documents issued by the Employer comprise:</p> <p>Part T1: Tendering Procedures</p> <p>T1.1 Tender notice and invitation to tender</p> <p>T1.2 Tender data</p> <p>Part T2: Returnable Schedules</p> <p>T2.1 List of returnable documents</p> <p>T2.2 Returnable schedules</p> <p>Part C1: Agreements and contract data</p> <p>C1.1 Form of offer and acceptance (Yellow)</p> <p>C1.2 Contract data (Yellow)</p> <p>Part C2: Pricing data</p> <p>C2.1 Pricing instructions (Yellow)</p> <p>C2.2 Pricing Schedules / Bills of Quantities (Yellow)</p> <p>Part C3: Scope of work</p> <p>C3 Scope of work (Blue)</p> <p>Part C4: Project Information</p> <p>C4 Project Information (Green)</p> <p>Part C5: Annexures (White)</p>

Part T1.2: Tender Data

Clause Number	Tender Data- Tender Submission
C.2.13 C.2.13.2	<p>Submitting a tender offer</p> <p>The returnable documents shall be electronically completed in their entirety, submitted on the issued software format or fully compatible format, unless otherwise specified.</p> <p>Submission in the tender box</p> <p>Submit the tender offer electronically on a flash drive. (In the relevant MS Word 2013 and MS Excel 2013 format as issued, and not in .pdf format, except where so specified.)</p>
C.2.13.3	<p>Only the following needs to be submitted:</p> <ul style="list-style-type: none">• Volume 3 – Scanned on a flash drive <p>The following information has to be submitted on flash drive:</p> <ul style="list-style-type: none">• The 1st file in pdf format which contains:<ul style="list-style-type: none">• Scanned copy of Form of Offer (pdf) and printed hardcopy of Form of Offer• Scanned copies of all returnable schedules and attachments (pdf)• A 2nd file in Excel format• Completed pricing schedule (scanned copy in .pdf and copy in Excel) and printed hardcopy of Summary of Pricing Schedule• Alternative offers will not be considered.

Part T1.2: Tender Data

Clause Number	Tender Data- Tender Submission
C.2.13.5	<p>Submit only the signed scanned .pdf tender offer</p> <ul style="list-style-type: none">• Tenderers shall submit their tender offers in the specified electronic format on CD / flash drive at the address specified under Sub-clause C.2.15 of the Tender Data

Part T1.2: Tender Data

Clause Number	Tender Data- Tender Submission
C.2.15	Closing time
C.2.15.1	Submission in tender box <p>Electronic submissions will not be accepted. The Employer's address for delivery of tender offers and identification details to be shown on each tender offer package are:</p> <p>Location of tender box: Reception</p> <p>Physical address: SANRAL Northern Region 38 Ida Street Menlo Park, Pretoria</p> <p>Identification details: Place the signed original tender offer in a package marked TENDER SANRAL R.033-130-2019/3C-SL SUB-CONTRACT FOR SITE MATERIALS LABORATORY FOR THE UPGRADING OF NATIONAL ROAD R33 SECTION 13 IN VAALWATER TOWN (KM 60.8 TO KM 63.0)</p> <p>Tenders must be submitted during office hours (09:00 to 16:00) Monday to Friday at the Employer's address.</p> <p>It is in the tenderer's interest to ensure that the delivery of the tender offer is recorded in the Employer's tenders received register and deposited in the tender box.</p>

Part T1.3: Tender Data (continued ...)

Clause Number	Tenderer's Obligations
C.2.1	Only those tenderers who satisfy the following criteria are eligible to submit tenders:
	<p>(a) A Joint Venture with a consolidated project specific B-BBEE scorecard</p> <p>i. The Lead Partner shall be a SANAS accredited laboratory.</p> <p>ii. The Targeted Partner(s), in accordance with the requirements of SANS 10845, Part 6 (Table B.2), shall be:</p> <ul style="list-style-type: none">- A QSE, EME or Start-up; and- 51 % black-owned; and- Status Level 1 or 2 B-BBEE contributor; and- Minimum of 30 % equity JV partner (CIDB JV agreement to be provided). <p>(b) Meet the minimum requirements for key persons as stated in the Scope of Works:</p> <p>-(i) Senior Site Laboratory Manager (Highest qualification certificate and affidavit from candidate regarding years' experience to be provided):</p> <ul style="list-style-type: none">• Relevant National Diploma and minimum twelve (12) years' relevant experience; or• Relevant NQF 6 qualification and minimum twelve (12) years' relevant experience; or• Grade 12 and minimum fifteen (15) years' relevant experience; or• Relevant NQF 4 and minimum fifteen (15) years' relevant experience

Part T1.3: Tender Data (continued ...)

Clause Number	Tenderer's Obligations
C.2.1	Only those tenderers who satisfy the following criteria are eligible to submit tenders:
	<p>(ii) Assistant (Trainee) Laboratory Manager (Highest qualification certificate and affidavit from candidate regarding years' experience to be provided):</p> <ul style="list-style-type: none">• Grade 12 and 7 years relevant experience; or• NQF 4 and 7 years relevant experience, or• an additional 2 years relevant experience for each year of schooling below Grade 12. <p>(iii) Quality Assurance Manager (Copies of qualification certificates and affidavit from candidate regarding years' experience to be provided):</p> <ul style="list-style-type: none">• Minimum eight (8) years' relevant experience in Civil Engineering Materials Testing; and• Valid certificate for Laboratory Systems Course based on ISO 17025; and• Valid certificate for Internal Auditing Course based on ISO 17025.

Part T1.3: Tender Data (continued ...)

Clause Number	Tenderer's Obligations
C.2.1	Only those tenderers who satisfy the following criteria are eligible to submit tenders:
	<p>(c) National Treasury Central Supplier Database</p> <p>Each member of the Joint Venture shall be registered on the National Treasury Central Supplier Database at close of tender. Tenders received from such tenderers who do not comply with this requirement, shall not be considered.</p> <p>(d) The Service Provider and his Subcontractors shall be registered with the Bargaining Council for the Civil Engineering Industry (Government Notice R.490 – Part III contained in Government Gazette No. 37750) and rates for wages and conditions of labour agreed by the Bargaining Council for the Civil Engineering Industry shall apply to the Service Provider and all his Subcontractors except where a specific industry publishes its own wage rates and conditions of labour.</p> <p>Failure to satisfy the eligibility criteria will result in a non-responsive tender.</p>

Part T1.2: Tender Data

Clause Number	Tender Data
C3.11.	<p>Evaluation of tender offers</p> <p>The tender will be evaluated in terms of Preferential Procurement Policy Framework Act (PPPFA, Act 5 of 2000).</p>
	<p>The tenderer's attention is drawn to <u>Clause C3.11</u>.</p> <p>The conditions for the <u>Eligibility for B-BEE points</u> is explained in detail.</p> <ul style="list-style-type: none">• 80/20 preference point system for acquisition of goods and services for Rand value equal to or above R2 000 and up to R50 million

Part T1.2: Tender Data

Clause Number	Tender Data Acceptance of Tender Offer
C3.13	<p data-bbox="247 332 759 375">Acceptance of a tender offer</p> <p data-bbox="247 408 1912 575">The conditions stated in clauses C.3.13(a) to (f) of the Conditions of Tender as well as the following additional clauses C.3.13(g) to (k) shall be applied as objective criteria in terms of section 2(1)(f) of the Preferential Procurement Policy Framework Act, 2000 (Act No 5 of 2000) and as compelling and justifiable reasons not to award to the highest scoring tenderer:</p> <p data-bbox="247 629 1912 796">g) Each partner or any of its directors is not listed on National Treasury's Register of Tender Defaulters or Restricted Suppliers, or the Employer's database, in terms of the Prevention and Combating of Corrupt Activities Act, 2004 (Act No 12 of 2004) as a tenderer or person prohibited from doing business with the public sector;</p> <p data-bbox="247 851 1584 886">h) Each partner have not abused the Employer's supply chain management system; and</p> <p data-bbox="247 941 1912 1019">i) Each partner have not failed to perform on any previous contract and has not been given a written notice to this effect.</p> <p data-bbox="247 1073 1912 1240">j) Each Tenderer, or in the event of a Joint Venture, each member of the Joint Venture, shall be tax compliant. Tenderers who are not compliant or become non-compliant during the tender evaluation period, shall become compliant within 7 (seven) working days of the date of being notified. Tenders received from such tenderers who are not tax compliant within 7 (seven) working days of being notified, will not be considered.</p> <p data-bbox="247 1295 1912 1419">k) The JV shall comply with the requirements and definitions of SANS 10845 Part 6 – Participation of Targeted Partners in Joint Ventures in Contracts and the specific requirements as listed under clause C.2.1.(a) above.</p>

Part T1.2: Tender Data

Clause Number	Tender Data
C3.13	<p data-bbox="247 368 1912 446">I) Lead Partner of the JV has a facility that is registered as a SANAS accredited Civil Engineering Materials testing laboratory facility;</p> <p data-bbox="247 496 1912 668">In addition to the requirements in the Conditions of Tender, with regard to, where the associated risk is foreseen, in the event that a due diligence is performed as part of the tender evaluation, the due diligence report will be used to evaluate the tenderer's ability to perform the contract as stated in sub-clause C.3.13 (b).</p> <p data-bbox="247 718 1912 796">The due diligence will evaluate the overall risk associated with the tender. The due diligence will take into consideration the following:</p> <ul data-bbox="343 811 1912 1068" style="list-style-type: none"><li data-bbox="343 811 1912 889">• Assessment of financial statements to assess the financial position of the tenderer and its ability to obtain the necessary guarantees or insurances;<li data-bbox="343 903 1912 939">• Integrity risk evaluation;<li data-bbox="343 946 1912 982">• Operations, activities, locations and key customers;<li data-bbox="343 989 1912 1025">• Reference checks from previous clients; and<li data-bbox="343 1032 1912 1068">• Risk rating (i.e. high risk, medium to high risk, medium risk or low risk) of the tenderer

Part T1.2: Tender Data

Clause Number	Tender Data
C.3.1	Respond to requests from the tenderer
C.3.1.1	<p>The employer shall respond to clarifications received up to 12 working days before tender closing date.</p> <p>The Employer shall respond to any clarifications from the tenderers emanating from the addenda until 3 working days before tender closing date</p>
C.3.2	Issue Addenda The employer shall issue addenda until ten (10) working days before tender closing date

Part T1.2: Tender Data

Clause Number	Tender Data
C.2.16	Tender offer validity
C.2.16.1	The tender offer validity period is 180 days.
C.2.16.3	<p>Where a tenderer, at any time after the opening of his tender offer but prior to entering into a contract based on his tender offer:</p> <ul style="list-style-type: none">(a) withdraws his tender;(b) gives notice of his inability to execute the contract in terms of his tender; or(c) fails to comply with a request made in terms of C.2.17, C.2.18 or C.3.9, <p>such tenderer shall be barred from tendering on any of the Employer's tenders for a period to be determined by the Employer, but not less than 6 (six) months from a date determined by the Employer. This sanction also applies to tenders under evaluation and not yet awarded. This sanction does not apply to tenders under evaluation where a request for extension for the validity period was not accepted by the tenderer. The Employer may fully or partly exempt a tenderer from the provisions of this conditions if he is of the opinion that the circumstances justify the exemption.</p>

Part T1.2: Tender Data

Clause Number	Tender Data
C.2.18	<p>Provide other material</p> <p>Any additional information requested under this clause must be provided within 5 (five) working days of date of request.</p>



Part T2: Returnable Schedules

Part T2: Returnable Schedules

T.2.1 LIST OF RETURNABLE SCHEDULES

The tenderer must complete the following returnable schedules:

Notes to tenderer:

- 1. Failure to fully complete the relevant returnable documents or to supply the requested information within 24 hours from when the request was made shall render such a Tender offer non-responsive.**
- 2. Tenderers shall note that their signatures appended to each returnable form represents a declaration that they vouch for the accuracy and correctness of the information provided, including the information provided by candidates proposed for the specified key positions.**
- 3. Notwithstanding any check or audit conducted by, the information provided in the returnable documents is accepted in good faith and as justification for entering into a contract with a Tenderer. If subsequently any information is found to be incorrect such discovery shall be taken as wilful misrepresentation by that Tenderer to induce the contract. In such event the Employer has the discretionary right under contract condition 8.4 to terminate the contract.**

FORM D1: SCHEDULE OF TENDER COMPLIANCE

CONTRACT SANRAL R.033-130-2019/3C-SL

FOR THE UPGRADING OF NATIONAL ROAD R33 SECTION 13 IN
VAALWATER TOWN (KM 60.8 TO KM 63.0)

Note to tenderer:

This form has been created as an aid to ensure a tenderer's compliance with the completion of the returnable forms and schedules and subsequent placement in the correct envelope.

Part T2: Returnable Schedules

FORM NO.	DESCRIPTION	TICK IF COMPLETED
A1	CERTIFICATE OF ATTENDANCE AT CLARIFICATION MEETING	
A1.1	CERTIFICATE OF INTENTION TO SUBMIT A TENDER	
A2.1	CERTIFICATE OF AUTHORITY FOR SIGNATORY	
A2.2	DECLARATION OF TENDERER'S CURRENT STATUS OF ANY DEBT OUTSTANDING TO SANRAL	
A3.1	COMPULSORY ENTERPRISE QUESTIONNAIRE (INCORPORATING SBD4)	
A3.2	REGISTRATION ON NATIONAL TREASURY CENTRAL SUPPLIER DATABASE	
A3.3	JOINT VENTURE AGREEMENT	
A4	SCHEDULE OF DEVIATIONS OR QUALIFICATIONS BY TENDERER	
A5	SCHEDULE OF ADDENDA TO TENDER DOCUMENTS	
A6	CERTIFICATE OF TAX COMPLIANCE (INCORPORATING SBD 2)	
A7	CERTIFICATE OF INSURANCE COVER	
A8	TENDERER'S CREDIT RATING AND BANK DETAILS	
A9	CERTIFICATE OF TENDERER'S LITIGATION HISTORY	
A10	SCHEDULE OF CURRENT COMMITMENTS	
A11	POSSIBLE COMMITMENTS OF KEY PERSONNEL	
A12	CERTIFICATE OF COMPLIANCE WITH OCCUPATIONAL HEALTH AND SAFETY ACT, 1993 AND CONSTRUCTION REGULATIONS, 20 AS WELL AS COID ACT, 1993	
A13	TENDERER'S B-BBEE VERIFICATION CERTIFICATE (INCORPORATING SBD6.1)	
A14	FORM SBD1 – INVITATION TO BID AND TERMS AND CONDITIONS FOR BIDDING	
B1	TECHNICAL AND MANAGERIAL ASPECTS OF SENIOR SITE LABORATORY MANAGER	
B2	TECHNICAL AND MANAGERIAL ASPECTS OF THE ASSISTANT (TRAINEE) LABORATORY MANAGER	
B3	TECHNICAL AND MANAGERIAL ASPECTS OF QUALITY ASSURANCE MANAGER	
C1	QUALITY ASSURANCE MANAGEMENT SYSTEM'S COVERAGE OF TEST METHODS IN THE MAIN LABORATORY	
C2	QUALITY ASSURANCE MANAGEMENT SYSTEM'S COVERAGE OF PROJECT SPECIFIC TEST METHODS IN THE MAIN LABORATORY	
D1	SCHEDULE OF RETURNABLE DOCUMENTS	
C1.1.1	FORM OF OFFER (INCORPORATING SBD7)	

Tender Rules

Take note of the following tender rules:

- Check documents for completeness
- Check excel worksheet for completeness and correctness of formulas, whether TOTALS are correct and are carried forward and whether percentages are entered correctly.
- Do not change or alter documents or electronic files or data unless instructed to (**this includes recreating and changing the format of the Excel files.**)
- Submit excel worksheet as provided and include hard copy. Check that Excel file and hard copy are the same.
- Enter rates as values only (**not formulas**)
- No signature = invalid form.



Part C1: Agreement and Contract Data

C1.2 CONTRACT DATA

C1.2.1 CONDITIONS OF CONTRACT

Note to tenderer:

- 1. The legislated Standard Conditions of Contract for Professional Services (as published and amended from time to time by the Construction Industry Development Board) are included together with SANRAL's special conditions of contract where the former is shown in standard format and SANRAL's amendments (i.e. special conditions) shown in italics. SANRAL's special conditions of contract are shown in italics as amending clauses of the Standard Conditions.**
- 2. In the reading and interpretation of the provisions of this Sub-contract, the Employer shall be SMEC South Africa, Tel. no. (012) 481 3800 and the tenderer is referred to as the Sub-Service provider.**
- 3. Nothing herein shall be construed as creating any privity of contract between the Sub-Service provider and SANRAL.**

C1.2.2 APPENDIX TO TENDER: CONTRACT DATA - INFORMATION PROVIDED BY THE EMPLOYER

<u>Clause No</u>	<u>Data</u>
3.4	<p>The address for receipt of communications is:</p> <p>Name: Mr Henk Diedericks Telephone: (012) 481-3800 E-mail: henk.diedericks@smec.com Address: SMEC SOUTH AFRICA (PTY) LTD. SMEC Centre 230 Albertus street La Montagne 0184</p> <p>PO Box 72927 Lynnwood Ridge 0040 South Africa</p>
3.11	<p>The penalty payable (per delay incident) is R 10,000.00 per day or part thereof up to a maximum of 10% of the laboratory contract value should the Contractor be delayed as a result of the late production of the laboratory test results.</p>
5.4	<p>Public Liability (to the value of R 1 000 000), Professional Indemnity (to the value of R 500 000) and SASRIA (General Contractor's all risk) insurances are required.</p> <p>The Service Provider shall indemnify the Employer and the South African National Roads Agency Limited (SANRAL) against all losses and claims which may arise from or in consequence of incorrect or sub-standard execution and completion of the project work, and against all claims, demands, lawsuits, damages, costs, including attorney and client costs, charges and expenses whatsoever in respect thereof or pertained thereto.</p> <p>The Service Provider shall, within fourteen days of the date of appointment, deliver to the Employer a signed Mandatory Form, as envisaged by Section 37(2) of the Occupational Health and Safety Act, which shall be in the format provided by the Employer together with the notification of the appointment.</p>

C1.2.2 APPENDIX TO TENDER: CONTRACT DATA - INFORMATION PROVIDED BY THE EMPLOYER

<u>Clause No</u>	<u>Data</u>
5.9	The provision of a Performance Guarantee will not be required under this Contract.
7.1.3.c	Where the key personnel are no longer available to undertake the necessary duties after the award of the tender, the service provider shall within fourteen (14) working days replace the key personnel listed in Form B1 or B2 or B3 with personnel with equivalent competencies and subject to re-evaluation and approval by the Employer. The technical score achieved by the replacement key person must be equal or better. than the score achieved of the tendered key person at tender stage
8.1	The Service Provider's Commencement Date shall be deemed to be fourteen (14) days after their receipt of the Engineers instruction to establish their equipment and staff on site.



Part C2: Pricing Data

- C2.1 PRICING INSTRUCTIONS
- C2.2 PRICING SCHEDULE (INCORPORATING SBD3)

SUMMARY OF PRICING SCHEDULE

ITEM NO.	DESCRIPTION	UNIT	QUANTITY	RATE	AMOUNT
C3.2	SITE LABORATORY				
C3.2.02	Class B laboratory type:				
	(a) Soils laboratory (complete):				
	(i) Establishment (including supply of equipment)	L/Sum	1.0		
	(ii) Operations	month	15		
	(c) Asphalt laboratory (complete):				
	(i) Establishment (including supply of equipment)	L/Sum	1.0		
	(ii) Operations	month	15		
SUB-TOTAL CARRIED FORWARD TO NEXT PAGE					
SUB-TOTAL BROUGHT FORWARD FROM PREVIOUS PAGE					
C3.2.03	Class C laboratory type:				
	(b) Concrete laboratory (complete):				
	(i) Establishment (including supply of equipment)	L/Sum	1.0		
	(ii) Operations	month	15		
C3.2.04	Computers, printers and software:				
	(a) Establishment (including supply of equipment)	L/Sum	1.0		
	(b) Operations	month	15		
C3.2.05	Laboratory administration and consumables:				
	(a) Operations	month	15		
	(b) ITIS data capture	month	15		
	(c) SARDS data capture	month	15		
TOTAL FOR C3.2 SITE LABORATORY CARRIED FORWARD TO SUMMARY PAGE					



Part C3: Scope of Works

PART C3: SCOPE

This section covers the requirements for the provision and quality management of a site laboratory established to carry out the necessary materials testing and construction quality control of the Works.

Provision for the erection of a site laboratory building, together with workbenches, services, furniture etc. will be made under the Works Contract (i.e. not to be priced by the laboratory Service Provider.

The class and type of laboratory envisaged for this project is as follows:

- | | |
|------------------------|--------------|
| • Soils Laboratory: | Class B |
| • Concrete Laboratory: | Class C |
| • Asphalt Laboratory: | Class B |
| • Seals Laboratory: | Not Required |



Part C4: PROJECT INFORMATION

LOCALITY MAP

The project is located in the province of Limpopo in the District Municipality of Waterberg and Modimolle-Mookgopong Local Municipality.



Description of Works

Works Overview

- The project is located on National Road R33 Section 13 (km 60.18-km 63.05), R33 Section 14 (km 0.00-km 0.25), and R520 Section 1 (km 0.00-km 0.25) in the town of Vaalwater in the Modimolle-Mookgopong Local Municipality
- The total length of the project is approximately 3.5 km of national road and approximately 7 km of Municipal roads
- Upgrading the existing R33 facility to a two lane, dual carriageway
- Upgrading and extending the existing Frontage/service roads
- Upgrading intersection and providing signals to most of the intersection
- Providing new Non-motorised Transport Walkways
- Upgrading the drainage system
- Protection and relocation of services
- Providing street lighting

Description of Works(continued)

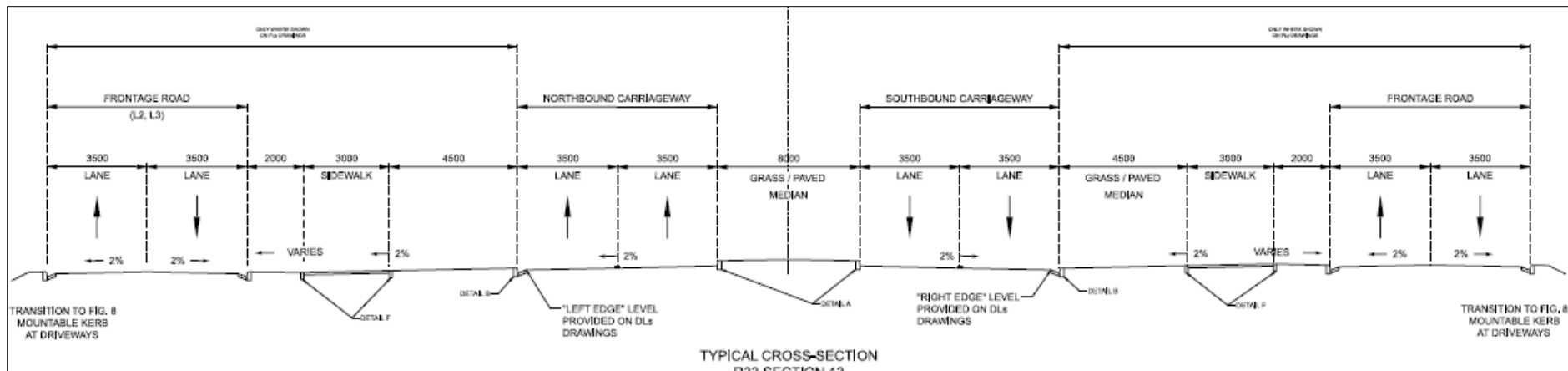
ROADWORKS

Description of Works(continued)

TYPICAL CROSS SECTIONS

R33 SECTION 13:

- 2 x 3.5 m surfaced lanes per direction
- 8.0 m Raised landscaped median
- Kerbing along the carriageway edges

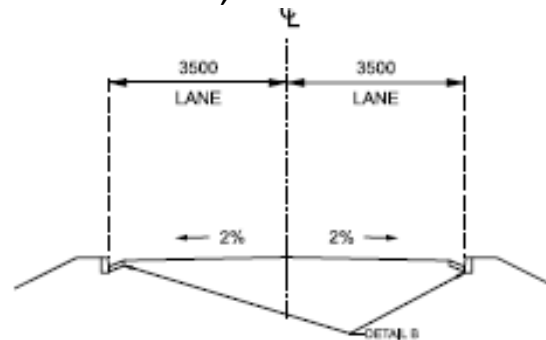


Description of Works(continued)

TYPICAL CROSS SECTIONS

FRONTAGE ROADS:

- 1 x 3.5 m surfaced lane per direction
- 300 mm channel, forming part of the above lane width
- Figure 3 barrier kerbing towards the R33, mountable kerbing at property accesses



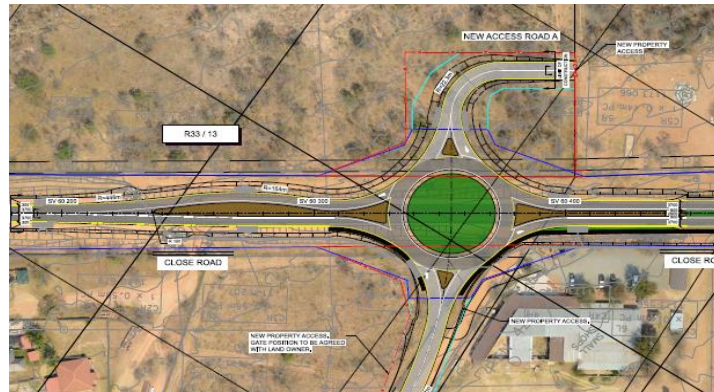
TYPICAL CROSS-SECTION
FRONTAGE ROADS L2, L3, R1-R5
AND SIDE ROADS

Description of Works(continued)

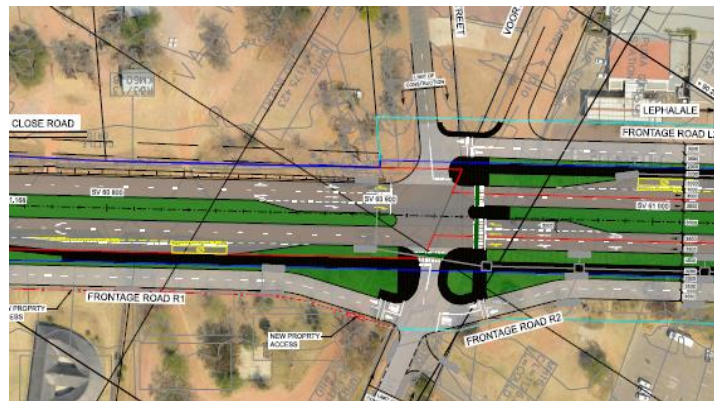
INTERSECTIONS UPGRADE

The following intersections are upgraded:

- Roundabout (50m Diameter) at SV 60 345



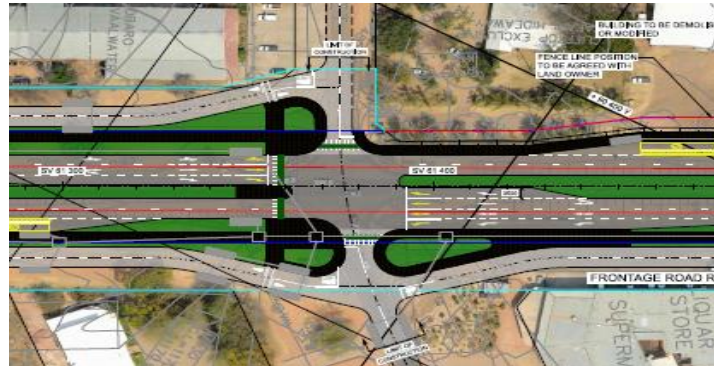
- Hans Campher/ Mogol Street Signalised Intersection at SV 60 920



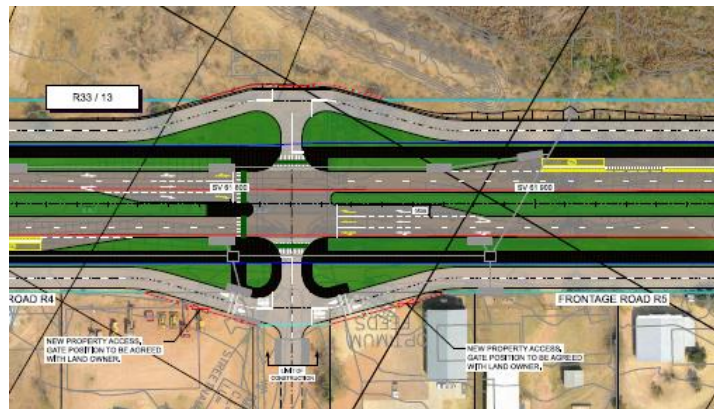
Description of Works(continued)

INTERSECTIONS UPGRADE

- Mark Street/ D972 Signalised Intersection at SV 61 375



- Strydom Street Signalised Intersection at SV 61 820



Description of Works(continued)

INTERSECTIONS UPGRADE

- Access Road B Signalised Intersection at SV 62 600



- 50 m diameter 2/1 lane roundabout at SV 63 050



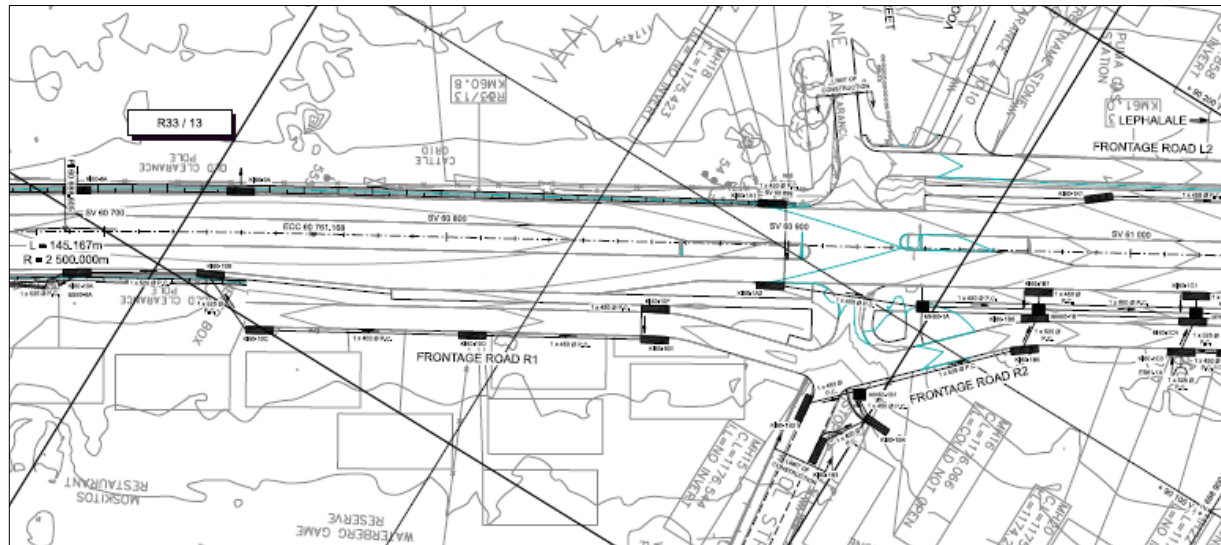
Description of Works(continued)

DRAINAGE

Description of Works(continued)

DRAINAGE

- New kerb-and-channel combination drains
- kerb inlets
- manholes,
- longitudinal culverts
- earth drains
- There will be 10 new discharge



Description of Works(continued)

PAVEMENT

Description of Works(continued)

PAVEMENT

Existing Pavement (R33 Section 13):



40mm – 50mm thick combination of multiple seal to asphalt

100mm – 200mm thick medium dense to dense gravelly sand (ferricrete)

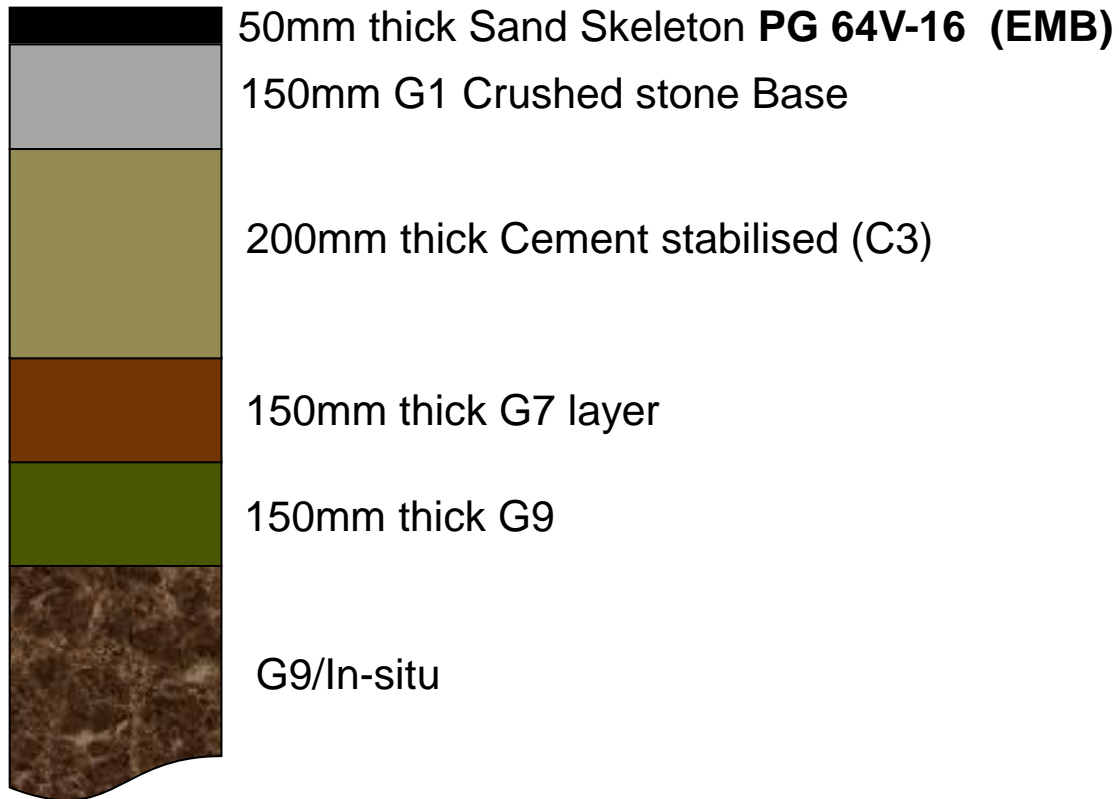
105mm – 110mm thick medium dense, gravelly sand

Medium dense, sand

Description of Works(continued)

PAVEMENT

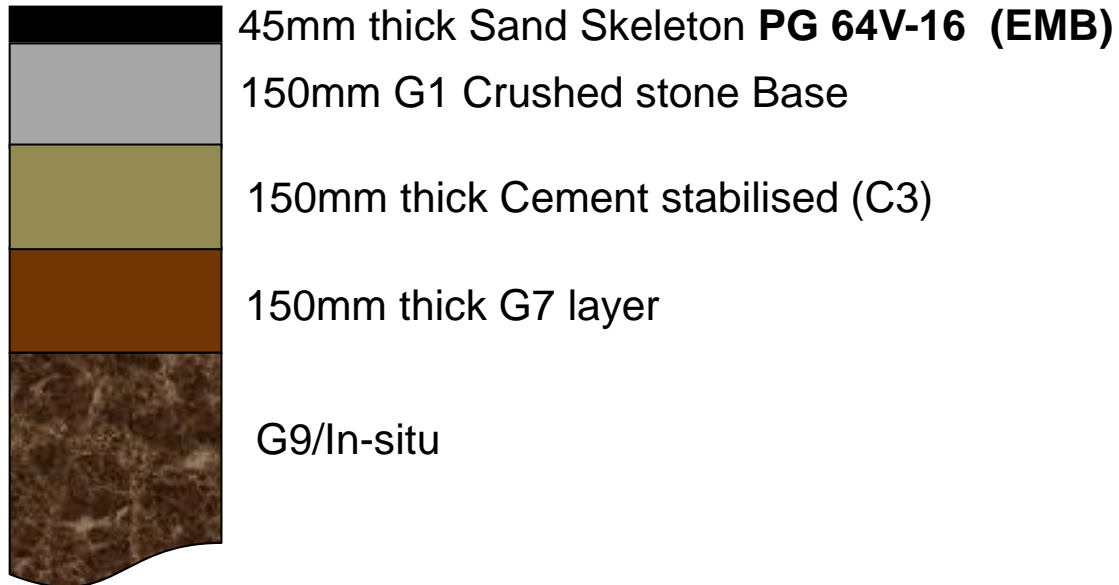
New Pavement (**R33 Section 13**):



Description of Works(continued)

PAVEMENT

New Pavement (**Frontage Roads**):



Description of Works(continued)

PAVEMENT

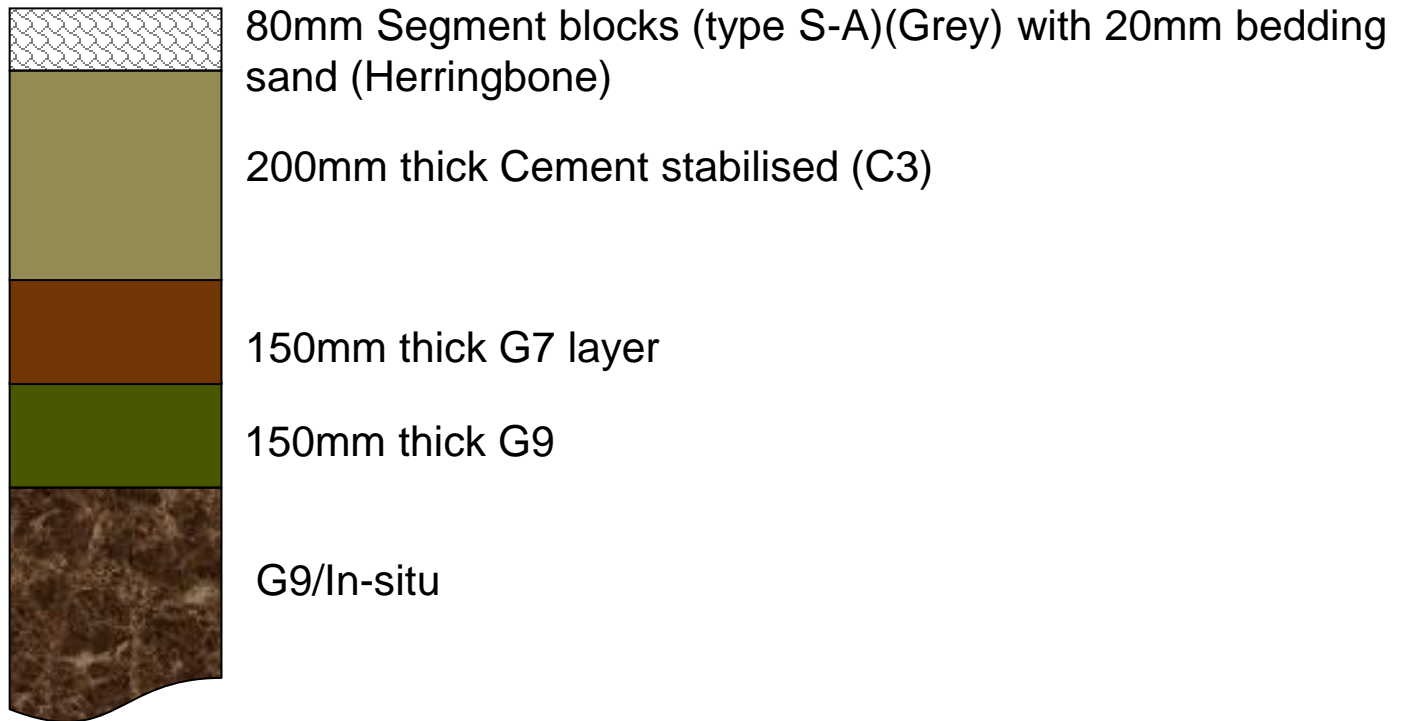
New Pavement (**Roundabout**):



Description of Works(continued)

PAVEMENT

New Pavement (**Bus stops**):





CAMP ESTABLISHMENT, POWER SUPPLY AND OTHER SERVICES

The works contractor shall be responsible for the camp establishment. The Sub-service Provider shall only be responsible for the establishment of the staff, labour, equipment and materials required to perform the site laboratory services.

SCOPE OF SITE LABORATORY SERVICES

The Service Provider to the Employer shall be responsible for all process and acceptance quality control testing on the project. The Service Provider shall perform all materials sampling, field and laboratory testing other than any specialised testing required by the Employer.

The following laboratory types must be provided:

- Class B Soils Laboratory
- Class C Concrete Laboratory
- Class B Asphalt Laboratory

The following laboratory staff must be provided:

- Senior Site Laboratory Manager
- Assistant Trainee Laboratory Manager
- Senior Materials Testers (2 X Field and 3 X Laboratory)
- Materials Testers (3 X Laboratory)
- Assistant Materials Testers (1 X Field and 3 X Laboratory)
- Laboratory General Assistants (X1)
- Data Capturer

Weather Data

INFORMATION SOURCE:
South African Weather Service
Pretoria, Tel.: (012) 367 6025
RAINFALL STATION:
VAALWATER – POL 0632198

Month	Average Monthly Rainfall (mm)	Average Monthly Maximum Temperature (°C)	Average Monthly Minimum Temperature (°C)
JAN	116.6	29	19
FEB	90.2	29	19
MAR	76.8	28	18
APR	36.3	26	15
MAY	8	24	12
JUN	4.7	21	9
JUL	3.8	21	9
AUG	3	25	10
SEP	10.2	28	13
OCT	43.1	30	16
NOV	86.2	29	18
DEC	108.9	29	19

THANK YOU FOR YOUR ATTENTION

SANRAL WEB ADDRESS: www.nra.co.za

- **Contact Persons**

henk.diedericks@smec.com

THANK YOU