

DRAWING REFERENCE


Drawing No.	Drawing Title

NOTES

DRAWING AMENDMENTS

No.	Amendment	Date	Appr.
1	ISSUED FOR CONSTRUCTION	NOV 2021	TM

Designed by **E MUDAU** Date **NOV 2021**
 Checked by **T RAPHALALANI** Date **NOV 2021**
 Drawn by **E MUDAU** Date **NOV 2021**
 Client appr. Date

Consultant

CONSULTING ENGINEERS
 e-mail : takalani@nemorango.co.za
 (015) 295 2023 (015) 295 2024

Impl. Agent

THE MVULA TRUST
 A leading developmental NGO

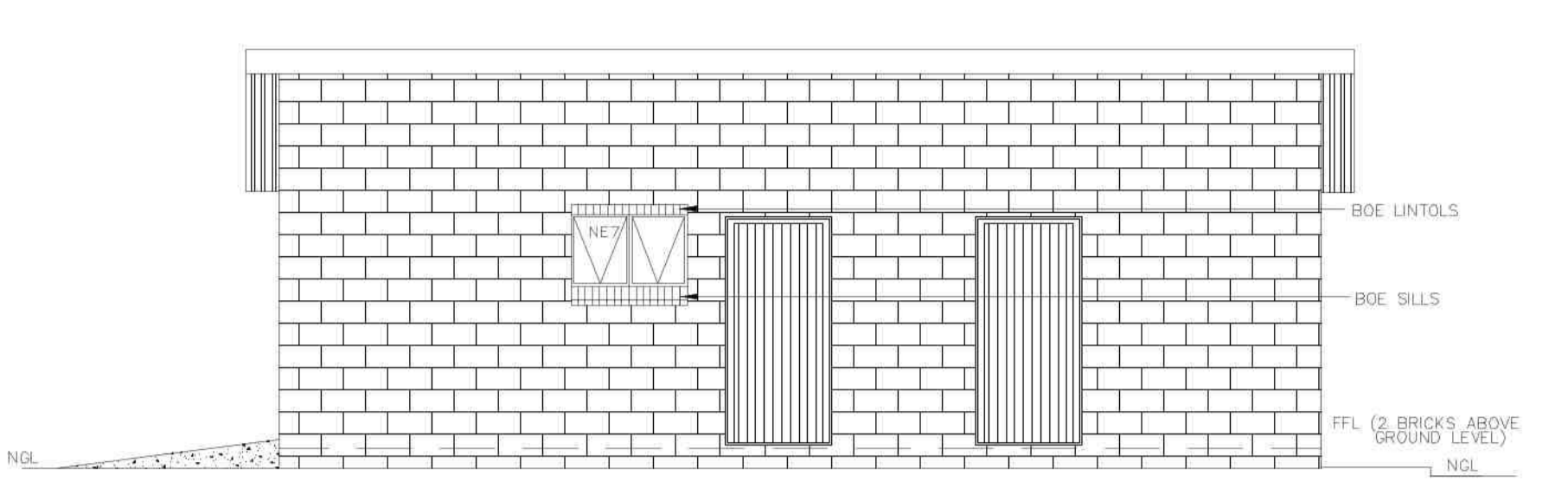
LIMPOPO

Proj Name
CONSTRUCTION OF WATER & SANITATION INFRASTRUCTURE AT MAPITLULA PRIMARY SCHOOL IN LIMPOPO

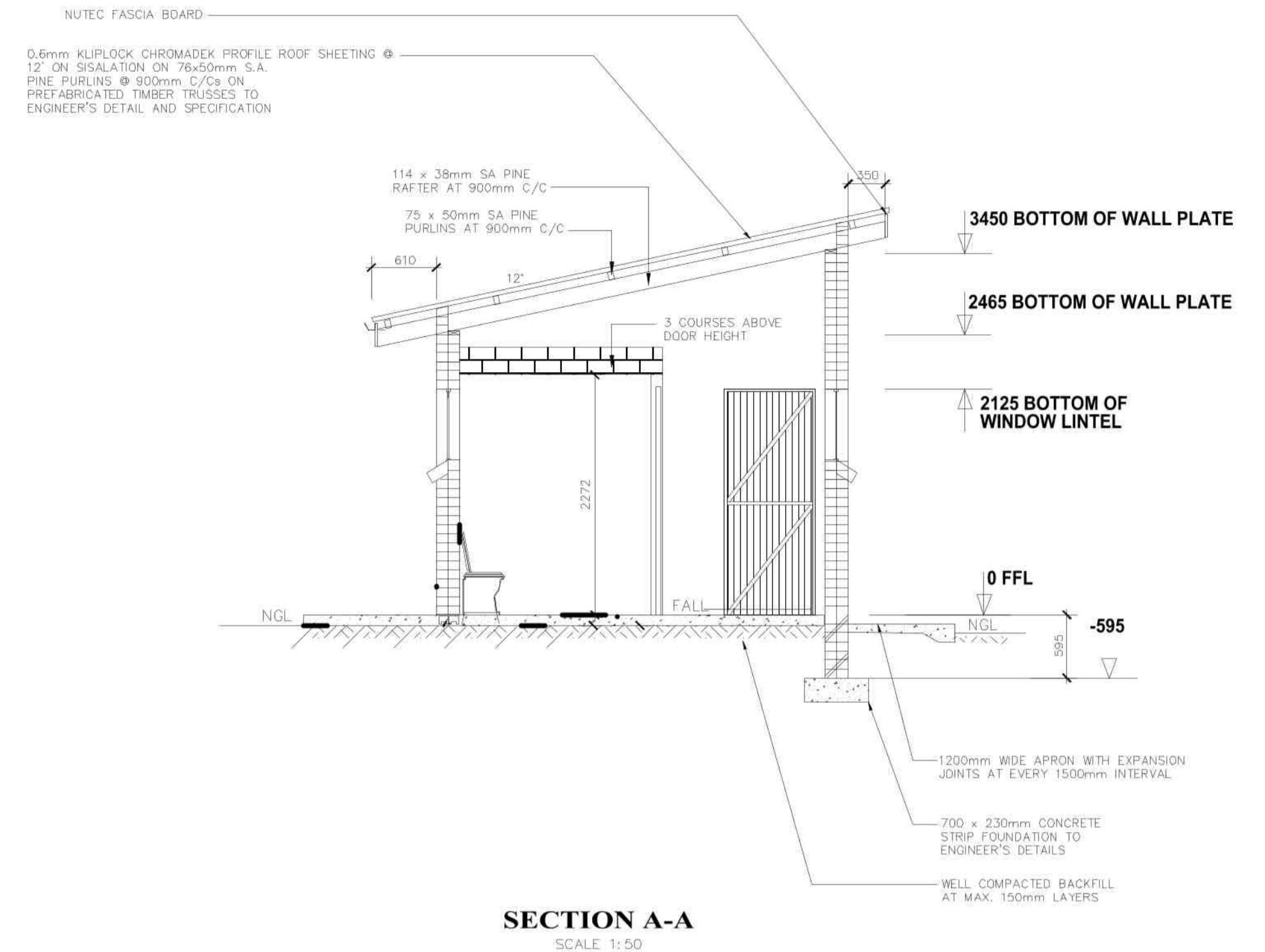
Drawing Title
GRMD1 & GRFD2 WATER BORNE TOILET

Proj Number Drawing No.
 TMT-LPDE-201920-LPCL5-04 TMT-LPDE-201920-LPCL5-03-002

Scale Rev No.
N.T.S. 0



FRONT
SCALE 1:50



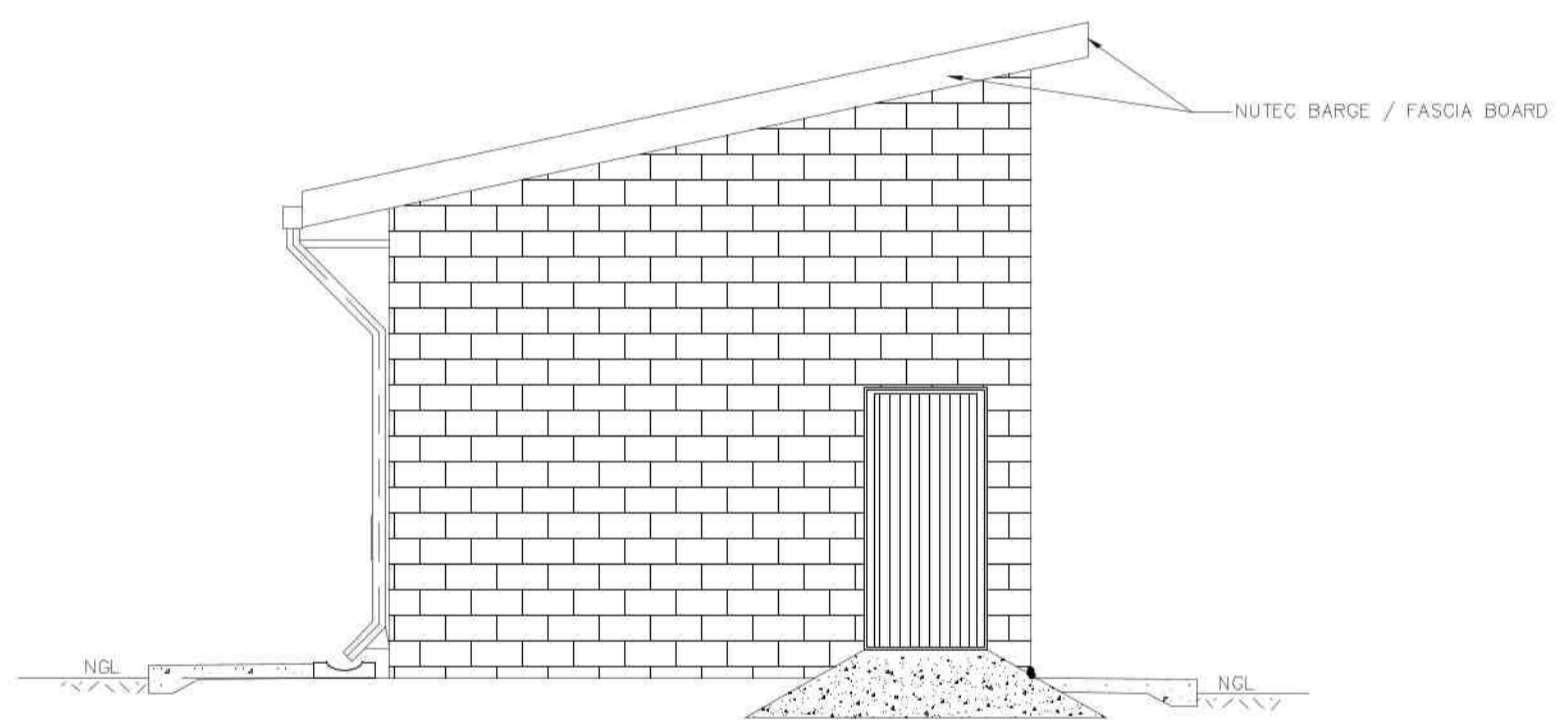
SECTION A-A
SCALE 1:50

WINDOW SCHEDULE	
WINDOW NO.	N2
CATALOGUE	NE7
FRAME	1022 x 654mm HIGH STANDARD STEEL WINDOW FRAME
FRAME FINISH	SPOT PRINING DEFECTS IN PRE-PRIME SURFACE WITH ZINC CHROMATE PRIMER & APPLY ONE UNIVERSAL UNDER COAT & TWO COATS EPIFF GOLDEN BROWN GLOSS ENAMEL PAINT ON STEEL
GLAZING	6.28mm OBSCURE SAFETY GLASS
NO. REQUIRED	3

WINDOW SCHEDULE	
WINDOW NO.	N1
CATALOGUE	NE1
FRAME	533 x 654mm HIGH STANDARD STEEL WINDOW FRAME
FRAME FINISH	SPOT PRINING DEFECTS IN PRE-PRIME SURFACE WITH ZINC CHROMATE PRIMER & APPLY ONE UNIVERSAL UNDER COAT & TWO COATS EPIFF GOLDEN BROWN GLOSS ENAMEL PAINT ON STEEL
GLAZING	6.28mm OBSCURE SAFETY GLASS
NO. REQUIRED	6

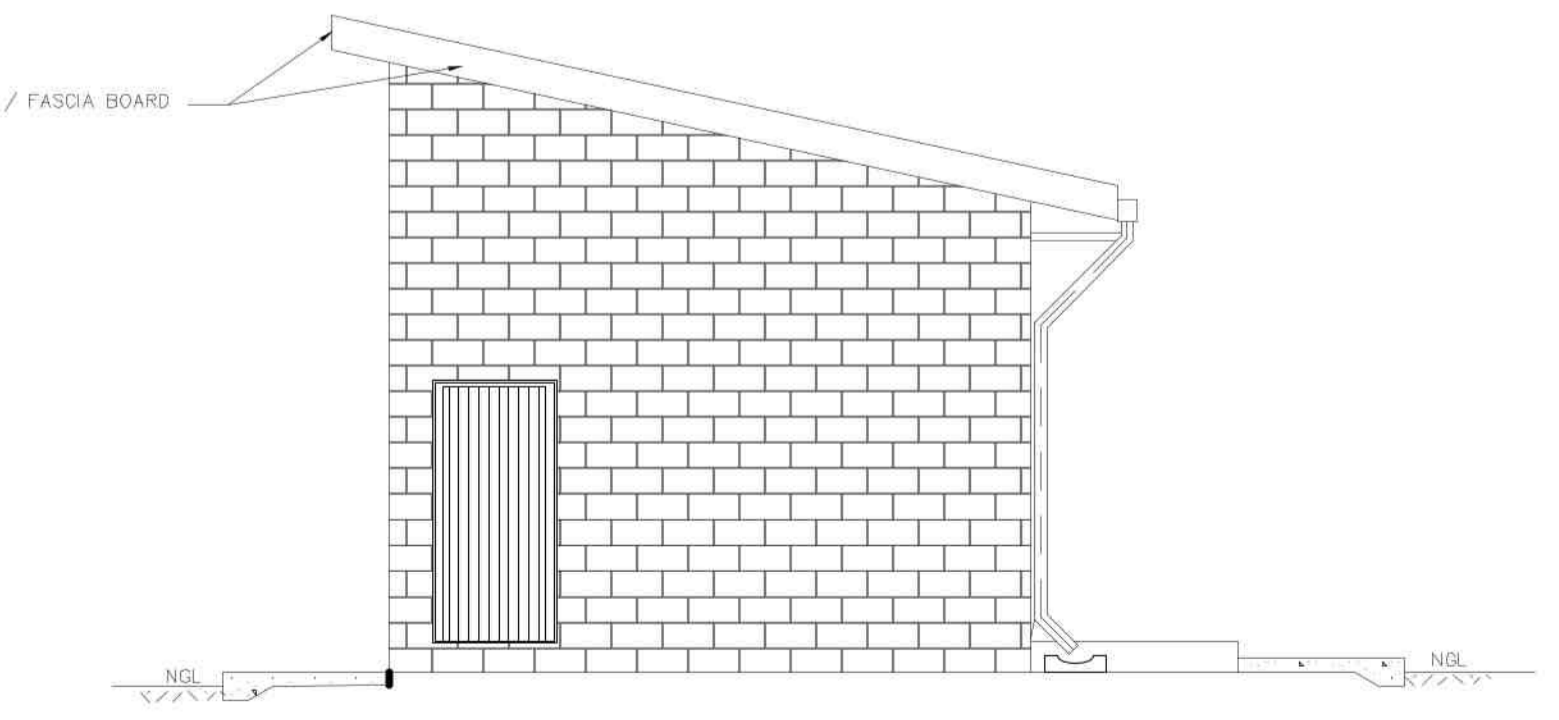
ENTRANCE DOOR	
FRAME TYPE	SINGLE REBATE STEEL FRAME TO FIT 220mm WALL (D1)
FRAME FINISH	PRIME AND PAINT UNDERCOAT AND 2co. FINISHING COATS IN GLOSS ENAMEL COLOUR TBC
DOOR LEAF	44mm FRAMED LEDGED AND BRACED DOOR SIZE 813x2032mm INCLUDING EXTERNAL WEATHER BAR
LEAF FINISH	UNDER COAT AND MINIMUM 2 COATS GLOSS ENAMEL - COLOUR TBC
LOCK	3 LEVER MORTICE LOCK SET
IRONMONGERY	100mm BRACE CABIN HOOK

CUBICLE DOOR	
FRAME TYPE	SINGLE REBATE STEEL DOOR FRAME - SIZE 83x53mm (FRAME UNDERCUT TO 150mm)
FRAME FINISH	PRIME AND PAINT UNDERCOAT AND 2 COATS GLOSS ENAMEL - COLOUR TBC
DOOR LEAF	44mm FRAMED LEDGED EMBRACED DOOR SIZE 813x2032mm (DOOR RAISE BY 150mm TO TOP OF FRAME)
LEAF FINISH	UNDER COAT AND MINIMUM 2 COATS GLOSS ENAMEL - COLOUR TBC
LOCK	TOILET INDICATOR LOCK
IRONMONGERY	100mm CHROME PLATED "D" TYPE HANDLE 3 BY SOLID BRACE HINGES

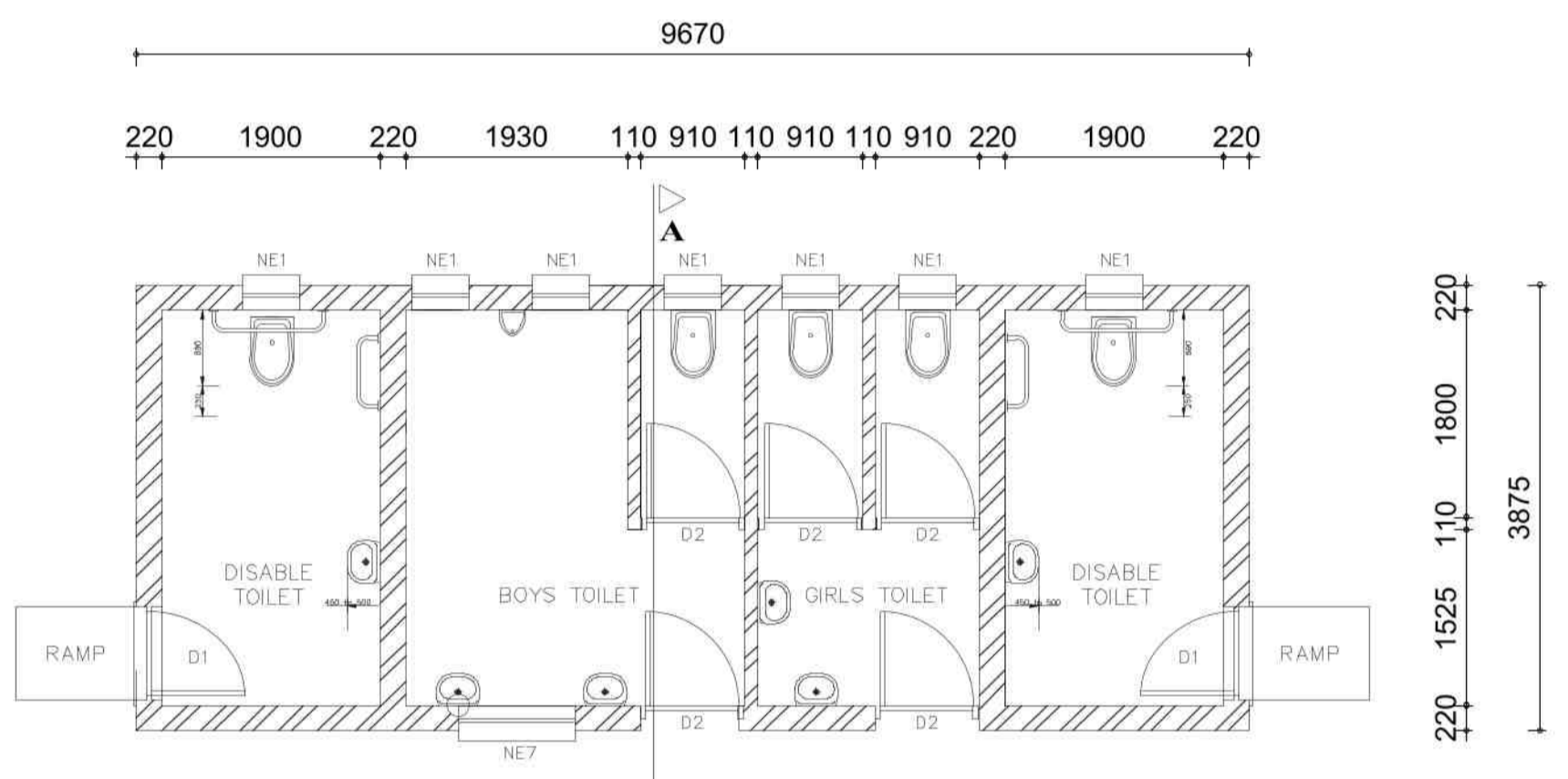


SIDE
SCALE 1:50

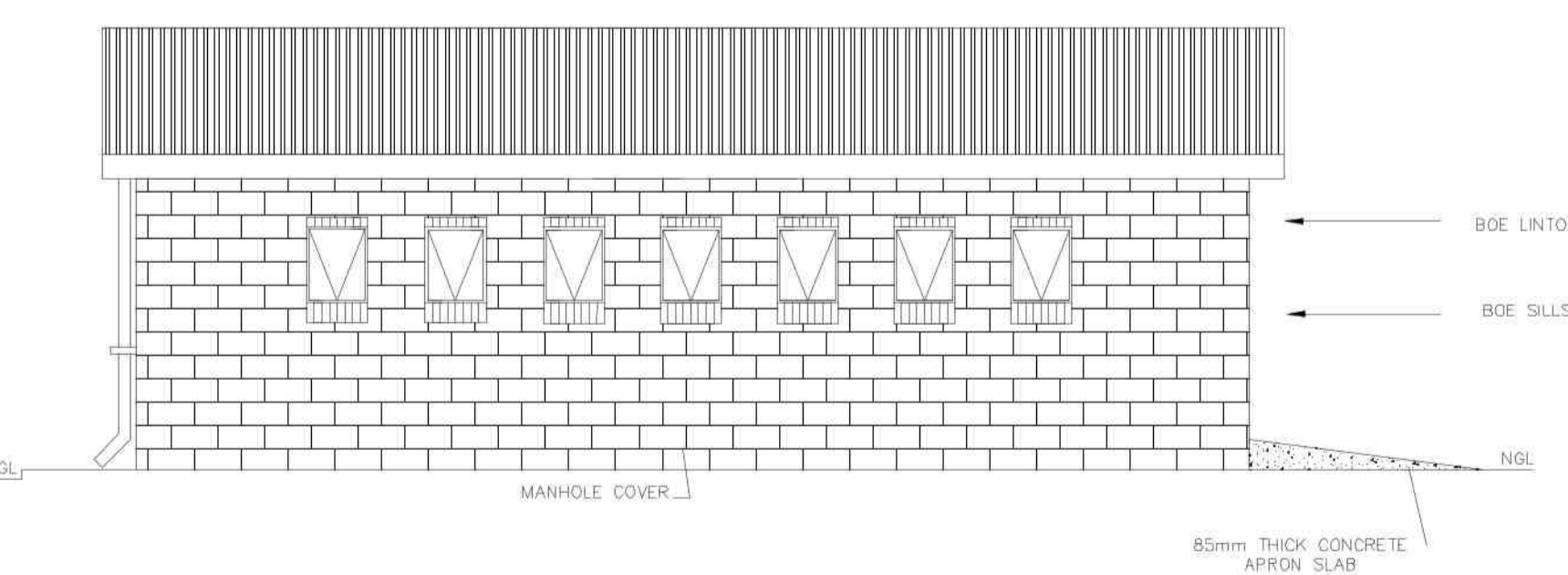
BUGLAR DOOR	
TYPE D1	2 OFF
POSITION	EXTERNAL TOILET BLOCK
DOOR TYPE	PURPOSE MADE SQUARE HOLLOW SECTION MILD STEEL SECURITY GATE
DOOR FINISH	1 COAT ZINC CHROMATE PRIMER MINIMUM 2 x COATS GLOSS ENAMEL (EXTERNAL QUALITY)
FRAME	50x38x1.6mm M.S. RECTANGULAR HOLLOW SECTION FRAME
FRAME FINISH	1 COAT ZINC CHROMATE PRIMER MINIMUM 2 x COATS GLOSS ENAMEL (EXTERIOR QUALITY)
DOOR	38x28x1.6mm RECTANGULAR HOLLOW SECTION FRAME WITH 20x20x4.8 INTERMEDIATES AT 100mm CENTERS AT A 45° ANGLE COLOUR TBC
IRONMONGERY	SECURITY DOUBLE THROW DEAD LOCK (NO LATCH)



SIDE
SCALE 1:50



FLOOR LAYOUT
SCALE 1:50



BACK
SCALE 1:50

GENERAL NOTES:

- ALL WORK TO BE CARRIED OUT IN ACCORDANCE WITH THE NATIONAL BUILDING REGULATION AND SABS 0400 OF 1990.
- CONTRACTOR TO READ ONLY FIGURED DIMENSION
- CONTRACTOR TO VERIFY ALL DIMENSION ON SITE BEFORE COMMENCING WITH ANY WORK.