

**NOTE: ALL HVAC UNITS TO SWITCH OFF IN THE EVENT OF FIRE.
SINGLE PHASE FANS TO BE INTERCONNECTED TO LIGHTING
WHICH SHALL BE CONTROLLED BY MOTION SENSOR.
ALLOW OVERLOAD PROTECTION ON ALL FANS**

NOTES:

- THIS DRAWING IS MERELY A GUIDE AND NO DIMENSIONS SHOULD BE TAKEN DIRECTLY FROM IT. ALL DIMENSIONS TO BE VERIFIED ON SITE.
- ALL DIMENSIONS MUST BE TAKEN ON SITE.
- THE EXACT POSITION OF EQUIPMENT WILL BE INDICATED ON SITE BY THE MECHANICAL ENGINEER
- DOORS UNDERCUT TO HAVE 25MM UNDERCUT.
- ALLOW 50MM WOODEN SLEEVES ALL ROUND, UNLESS SPECIFIED OTHERWISE.
- ALL FANS SHALL BE INTERCONNECTED WITH FIRE DETECTION SYSTEM AND SHALL SHUT-OFF IN THE EVENT OF FIRE.
- CONTRACTOR TO REPORT UNFORSEEN CLASHES TO THE MECHANICAL ENGINEER.
- THIS DRAWING IS MERELY A GUIDE AND NO DIMENSIONS SHOULD BE TAKEN DIRECTLY FROM IT. ALL DIMENSIONS TO BE VERIFIED ON SITE.
- ALL WORK TO BE DONE IN ACCORDANCE WITH NATIONAL BUILDING REGULATIONS AND BUILDING STANDARDS ACT (ACT 107 OF 1977)
- DUCTING INSTALLATION IN ACCORDANCE TO SANS 1238
- ALL WEATHER LOUVRE OPENINGS COMPLETE WITH 50MM ALL ROUND TIMBER SLEEVE.
- ALL DOOR GRILLES TO BE 305MM ABOVE FFL.
- UNDERSIDE OF ALL TRANSFER GRILLES TO BE 2195MM ABOVE FFL, INCLUDING SLEEVE, UNLESS SPECIFIED OTHERWISE
- HARD-WIRED CONTROLS TO ALL AC UNITS.
- DEDICATED SWITCH FOR EXTRACT FANS AS SPECIFIED BY ELECTRICAL ENGINEER.
- NO GRATING, ANGLE SECTIONS, ETC MAY BE CUT, DRILLED OR WELDED AFTER GALVANIZING
- THE GULLEYS ARE TO BE LINED WITH A SMOOTH EPOXY SUITABLE FOR SERVICE BETWEEN 0° & 90° AND RESISTANT TO IMPACT AND DETERGENTS
- FANS TO BE SWITCHED ON FROM WALL MOUNTED SWITCHES NEXT TO THE LIGHT SWITCHES COORDINATED BY ARCHITECTS AND ELECTRICAL ENGINEER.

REV	DATE	DESCRIPTION	ISSUED BY	APPR. BY	SIGNATURE
A	21-10-19	ISSUED FOR TENDER ONLY	JM	KH	
B	15-11-19	UPDATED LAYOUTS, ISSUED FOR TENDER ONLY	JM	KH	

LEGEND:

	RAG	RETURN AIR GRILLE
	DV	SUPPLY AIR DISC VALVE
	HWSU	HIGH WALL SPLIT UNIT
	DG	DOOR GRILLE
		CONDENSER UNIT
	CDP	CONDENSATE DRAIN POINT
		HARD WIRED TEMPERATURE CONTROL TO BE LINKED WITH AIRCON UNIT IN ROOM
		1 PHASE ISOLATOR
		3 PHASE ISOLATOR

CLIENT:

CONSULTANT:



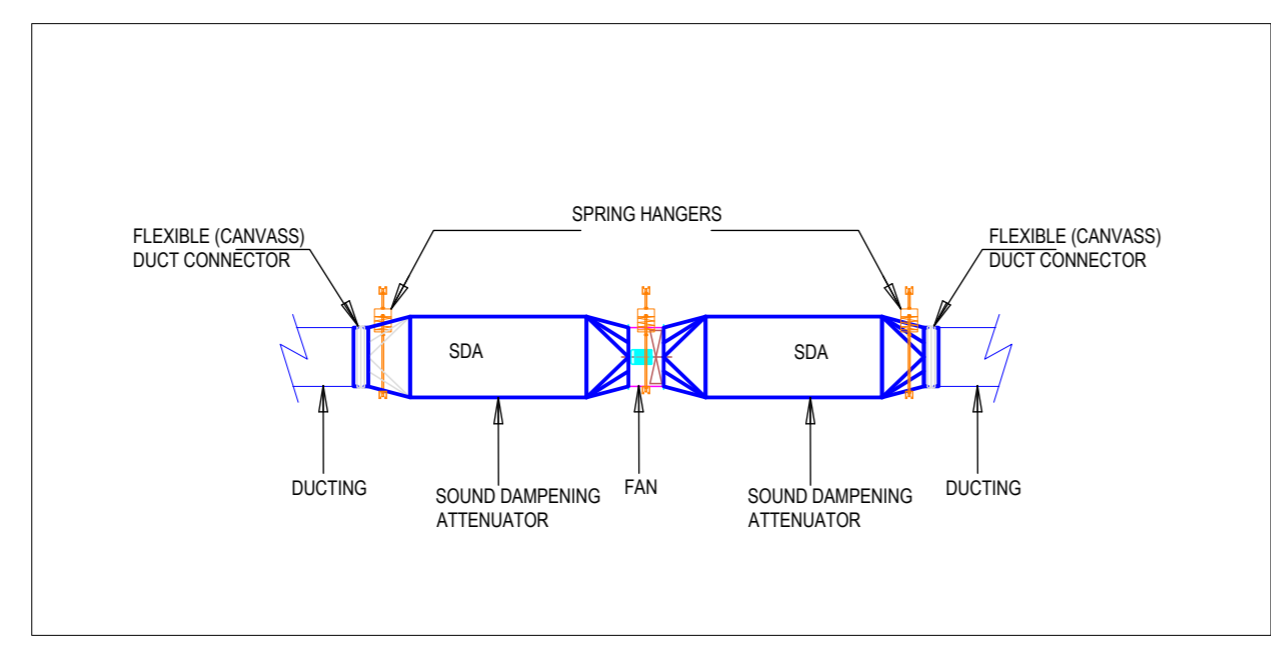
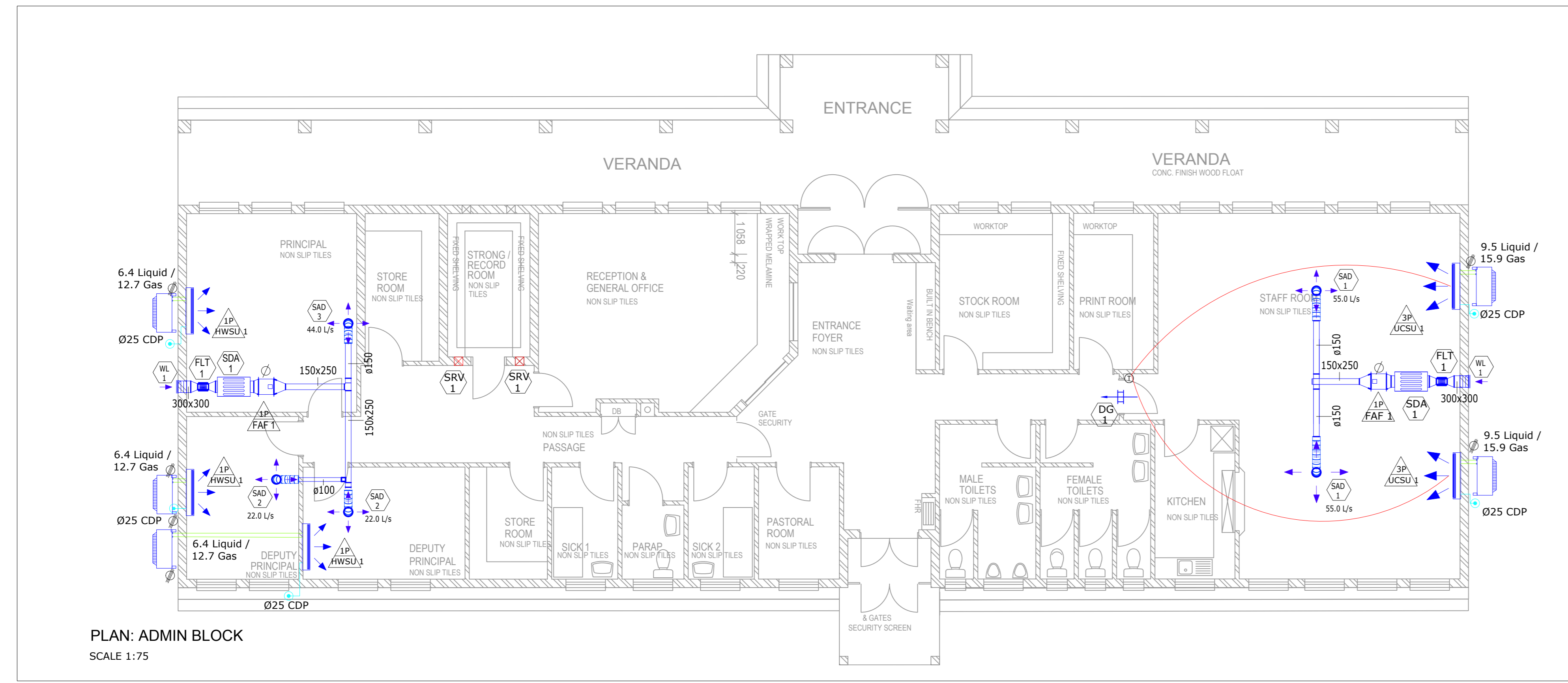
Gauteng Office (Head Office)
GladAfrica House, Hertford Office Park
90 Bekker Road, Vorna Valley, Midrand, 1686
P.O. Box 6723 Halfway House 1685
Tel: +27 11 312 2537/2584
Fax +27 11 805 1950
www.gladafrika.com

	NAME	REG. NO.	SIGNATURE	DATE
DRAWN	MANALA JD	M10037		16-05-18
DESIGNED	HLATSHWAYO K	201570273		16-05-18
APPROVED	TUGWETE BP	200970301		

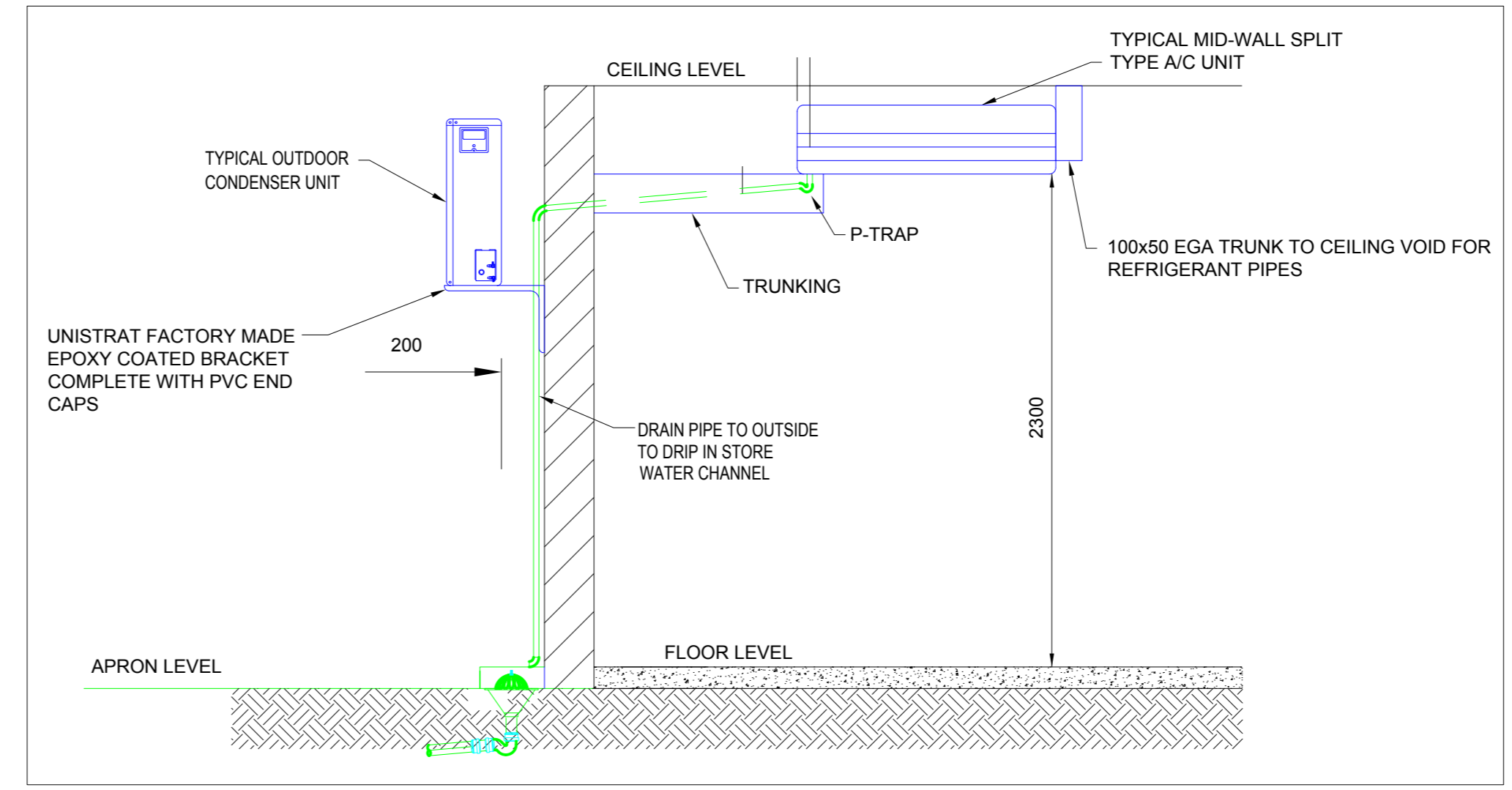
PROJECT DESCRIPTION
TROMPSBURG SPECIAL SCHOOL : SCHOOL SECTION

DRAWING TITLE
ADMIN HVAC LAYOUT

DISCIPLINE	DRAWING NUMBER	STATUS	REVISION
MECHANICAL	92-ME-AC-001	T	B



TYPICAL FAN ARRANGEMENT FOR SOUND DAMPENING
SCALE 1:50



DETAIL FOR POSITIONING OF OUTER AND INNER UNIT
SCALE 1:25

Duct Accessory Schedule

Mark	Description	Size	Sound (dBA)@3m	Count
SDA 1	Sound Dampening attenuator	300x300x850L	40-45	2

Air Terminal Schedule

Mark	Description	Flow(L/S)	Size(WxHxD)	Count
DG 1	Door Grille c/w Vermin Proof	110.0	425x325	1
FLT 1	Filter Cassette c/w MERV13/F7	135.0	300x300	2
SAD 1	Supply Air Disc Valve	55.0	ø150	2
SAD 2	Supply Air Disc Valve	22.0	ø100	2
SAD 3	Supply Air Disc Valve	44.0	ø150	1
WL 1	Weather Louvre	110.0	300x300	2
SRV 1	Strong Room Air Vent	49.0	180x180x300	2

Mechanical Equipment Schedule

Mark	Description	Cooling Capacity (Kw)	Heating Capacity (Kw)	Fan Speed (RPM)	Sound (dBA)@3m	Flow (L/s)	Pressure (Pa)	Voltage (V)	Input Current(A)	Count
FAF 1	Fresh Axial Flow Fan 400mmØ			1400	57	110.0	400.0 Pa	230	2	2
HWSU 1	High Wall Split Unit	3,5	4		28.8-43.8	163.0		220-240	4.85	3
UCSU 1	Under Ceiling Split Unit	10,6	5,7		40-52	569.0		380-415	11	2

FOR TENDER