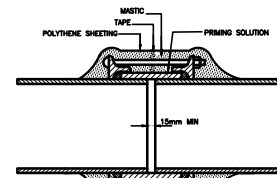
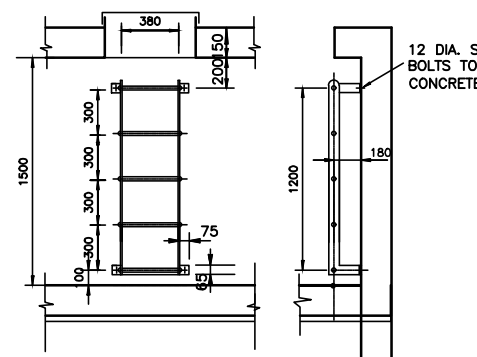


DETAIL OF ROOF VENTILATOR  
SCALE 1:50

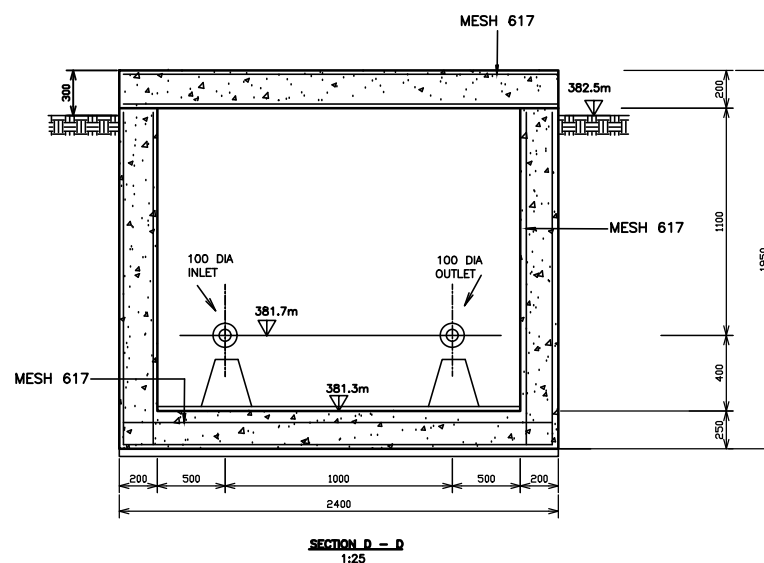
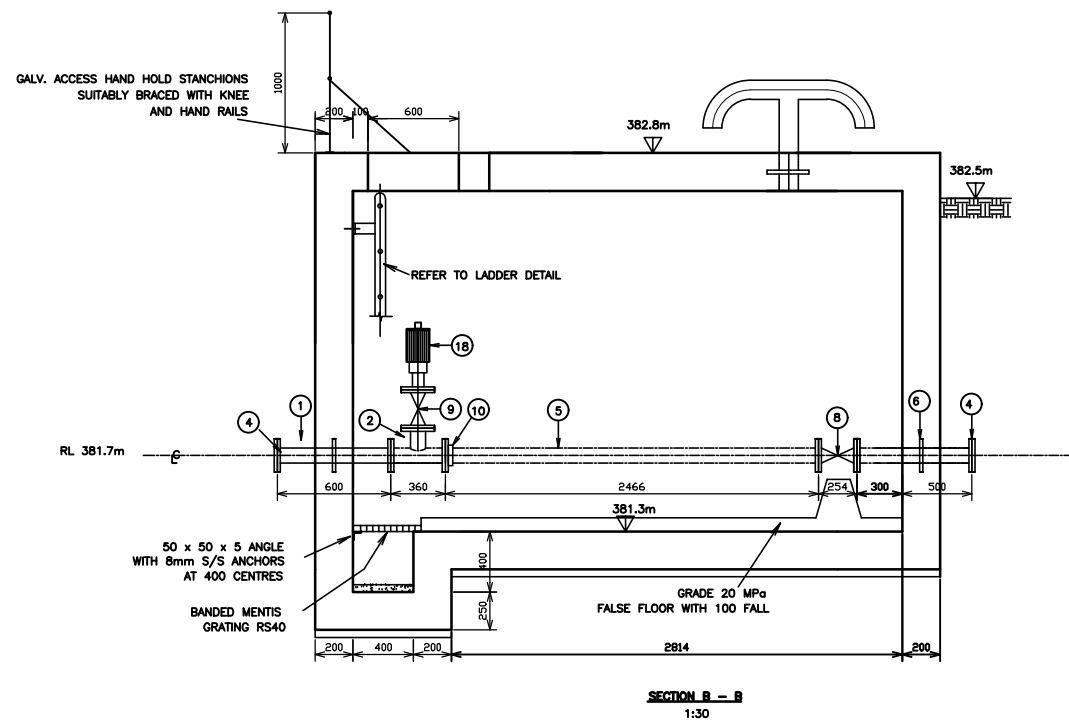


TYPICAL SECTION THROUGH COUPLING

MASTIC PROTECTION TO FLANGED JOINTS, FLEXIBLE COUPLINGS AND FLANGE ADAPTORS TO BE AS SUPPLIED BY SENSIO PRODUCTS OR SIMILAR APPROVED.  
NOTE:  
1. APPLICATION TO BE IN ACCORDANCE WITH MANUFACTURERS' INSTRUCTIONS.  
2. MASTIC TO BE APPLIED AS SHOWN ABOVE AND MOLDDED TO CONTOUR OF FLANGED JOINTS/COUPLINGS. CHAIRING ALL AIR IS EXCLUDED.  
3. MASTIC TAPE TO OVERLAP 75mm CIRCUMFERENTIALLY.  
4. POLYTHENE SHEETING TO OVERLAP BETWEEN WRAPPING ON PIPES EITHER SIDE OF JOINT BY 100mm AND SECURED USING DUCT TAPE.  
DETAILS OF MASTIC PROTECTION TO FLANGED JOINTS AND FLEXIBLE COUPLINGS (TO BE READ IN CONJUNCTION WITH PROJECT SPECIFICATIONS)



TYPICAL DETAILS OF LADDER  
1 : 20  
(HOT DIPPED GALVANISED AFTER FABRICATION)



SCHEDULE OF FITTINGS		
ITEM	DESCRIPTION	No. OF
1	100 $\phi$ x 600mm LONG D/FL STAINLESS STEEL PIPE WITH CENTRAL PUDDLE	2
2	100 x 550 $\phi$ STAINLESS STEEL ALL FLANGE TEE	2
3	100 x 100 $\phi$ STAINLESS STEEL ALL FLANGE TEE	2
4	100 $\phi$ BLANK FLANGE	4
5	100 $\phi$ STAINLESS STEEL PIPE, FLANGED ONE SIDE, 2000mm LONG CUT TO SUIT ON SITE	1
6	100 $\phi$ x 620mm LONG D/FL STAINLESS STEEL PIPE WITH CENTRAL PUDDLE	1
7	100 $\phi$ STAINLESS STEEL PIPE, FLANGED BOTH ENDS (220mm LONG)	1
8	100 $\phi$ ISOLATING VALVE WITH HANDWHEEL	2
9	50 $\phi$ ISOLATING VALVE WITH HANDWHEEL	3
10	100 $\phi$ VIKING JOHNSON COUPLING	2
11	100x50 $\phi$ STAINLESS STEEL REDUCER, FLANGED BOTH ENDS (180 mm LONG)	2
12	50 $\phi$ CAST IRON METER S&L WPD0150 T16 (250mm LONG)	1
13	100 x 100 $\phi$ TEE, BARREL PE 900mm LONG CUT TO SUIT ON SITE	1
14	50 $\phi$ VIKING JOHNSON COUPLING	1
15	50 $\phi$ STAINLESS STEEL PIPE, FLANGED ONE END 900mm LONG CUT TO SUIT ON SITE	1
16	50 $\phi$ CAST IRON TYPE Y-STRAINER FULL BORE ON T16 FLANGE(250mm LONG)	1
17	100 $\phi$ STAINLESS STEEL PIPE, FLANGED BOTH ENDS (360mm LONG)	1
18	25 $\phi$ VENT O MAT AIR VALVE	2
19	100 $\phi$ x 800mm LONG D/FL STAINLESS STEEL PIPE WITH CENTRAL PUDDLE	1

NOTE  
CONTRACTOR TO CONFIRM DIMENSIONS OF FITTINGS  
WITH SUPPLIER TO ENSURE THEY FIT IN THE VALVE CHAMBER



DRAWING STATUS  
ISSUED FOR TENDER

ORIGINAL SCALE  
AS SHOWN ON A1

ALT. DWG. No.	CONTRACT No.
SHT. No. OF	PROJECT No.
	J154

DRAWING No.	REVISION
J154-D04	0

DESIGNED	B. MLALAZI
CHECKED	G. MLAMBO
DRAWN	B. MLALAZI
CHECKED	G. MLAMBO
PROJ. ENG.	S. MGUTSHINI

TEL: (033) 346 0689  
FAX: (033) 346 0692  
E-mail: ziyanda@ziyandaconsulting.co.za  
APPROVED :  
S. MGUTSHINI  
(PR. ENG. REG. No. 20040208)



PO BOX 809  
HILTON  
PIETERMARITZBURG  
3245

CLIENT:	
APPROVED :	

IMPLEMENTING AGENT:	
APPROVED :	

PROJECT/DRAWING TITLE  
MHLATHUZE WATER  
WATER INTERVENTIONS FOR HOT SPOT AREAS  
UMHLABUYALINGANA MUNICIPALITY  
CONSTRUCTION OF 50-150KL PREFABRICATED ELEVATED STEEL  
RESERVOIRS, BULK AND RETICULATION PIPELINES AND BOREHOLE  
DRILLING IN WARDS 2, 5 AND 6 UNDER THE UMHLABUYALINGANA  
MUNICIPALITY  
INLET AND OUTLET CHAMBER DETAILS

1	P01 - PROJECT PLAN
No.	REFERENCE DRAWINGS

0	ISSUED FOR TENDER	02/23	GM	SM
	REVISIONS	DATE	CHKD	APPRV
	ONLY REVISIONS MARKED THUS ARE VALID			