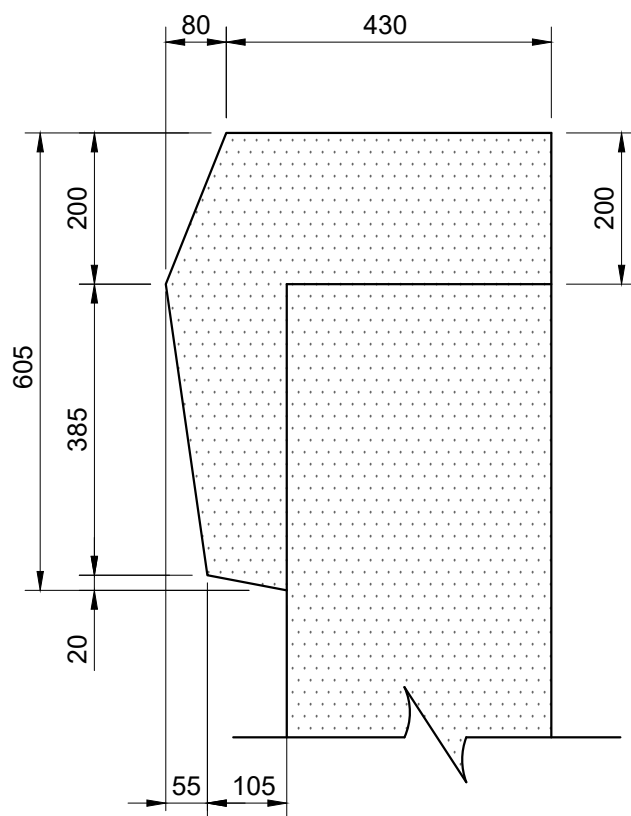
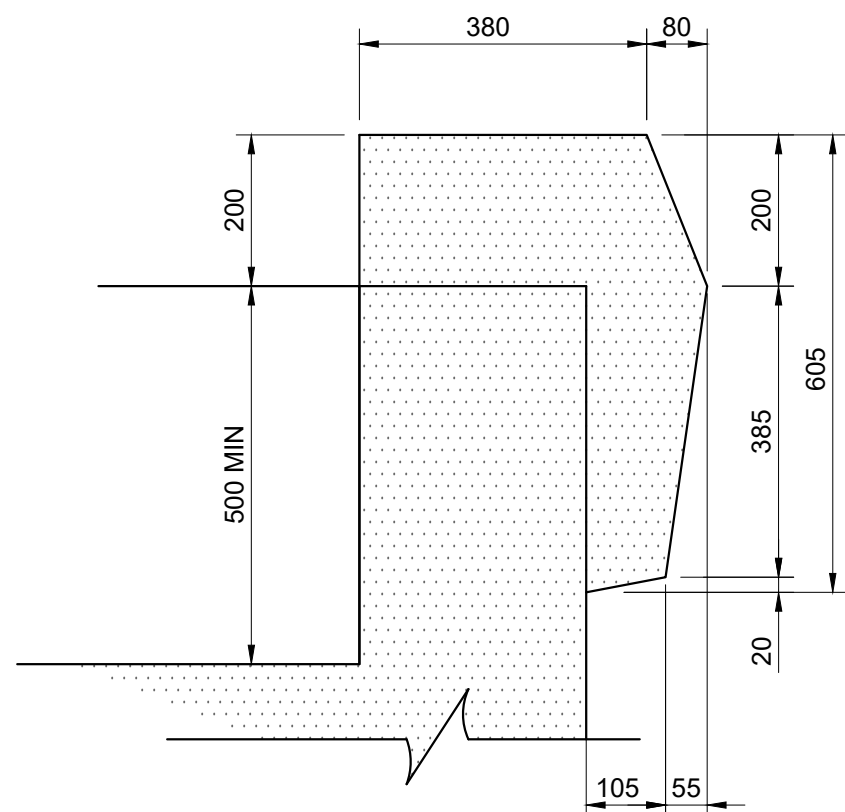


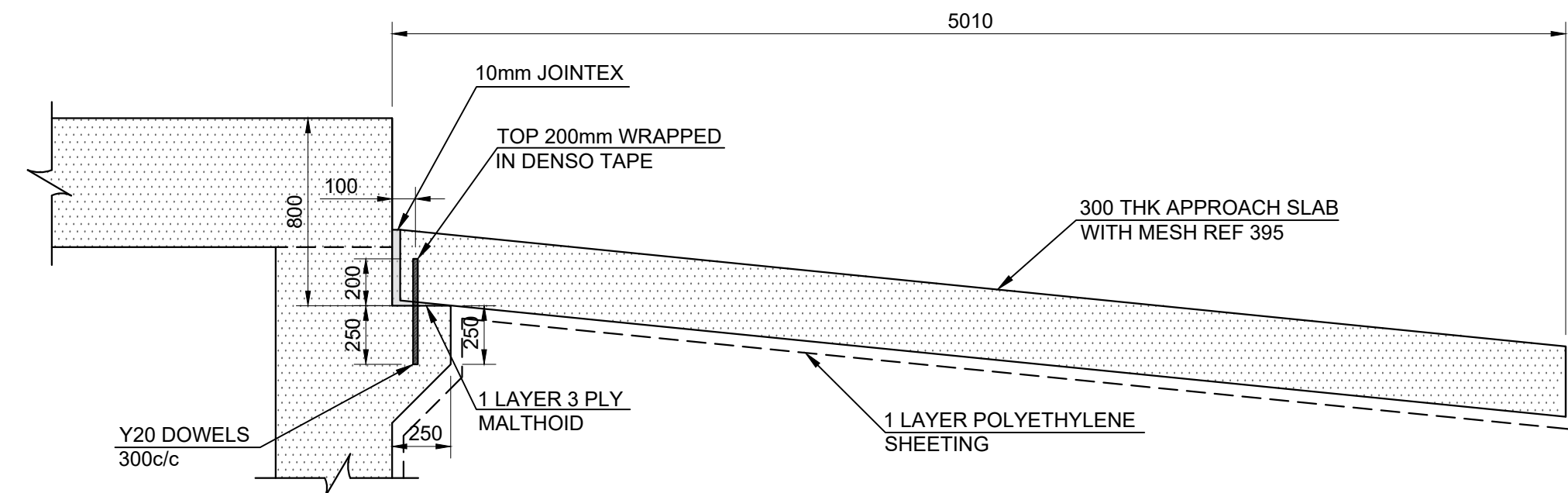
SECTION B-B  
(SECTION ELEVATION OF CULVERT)  
1:75



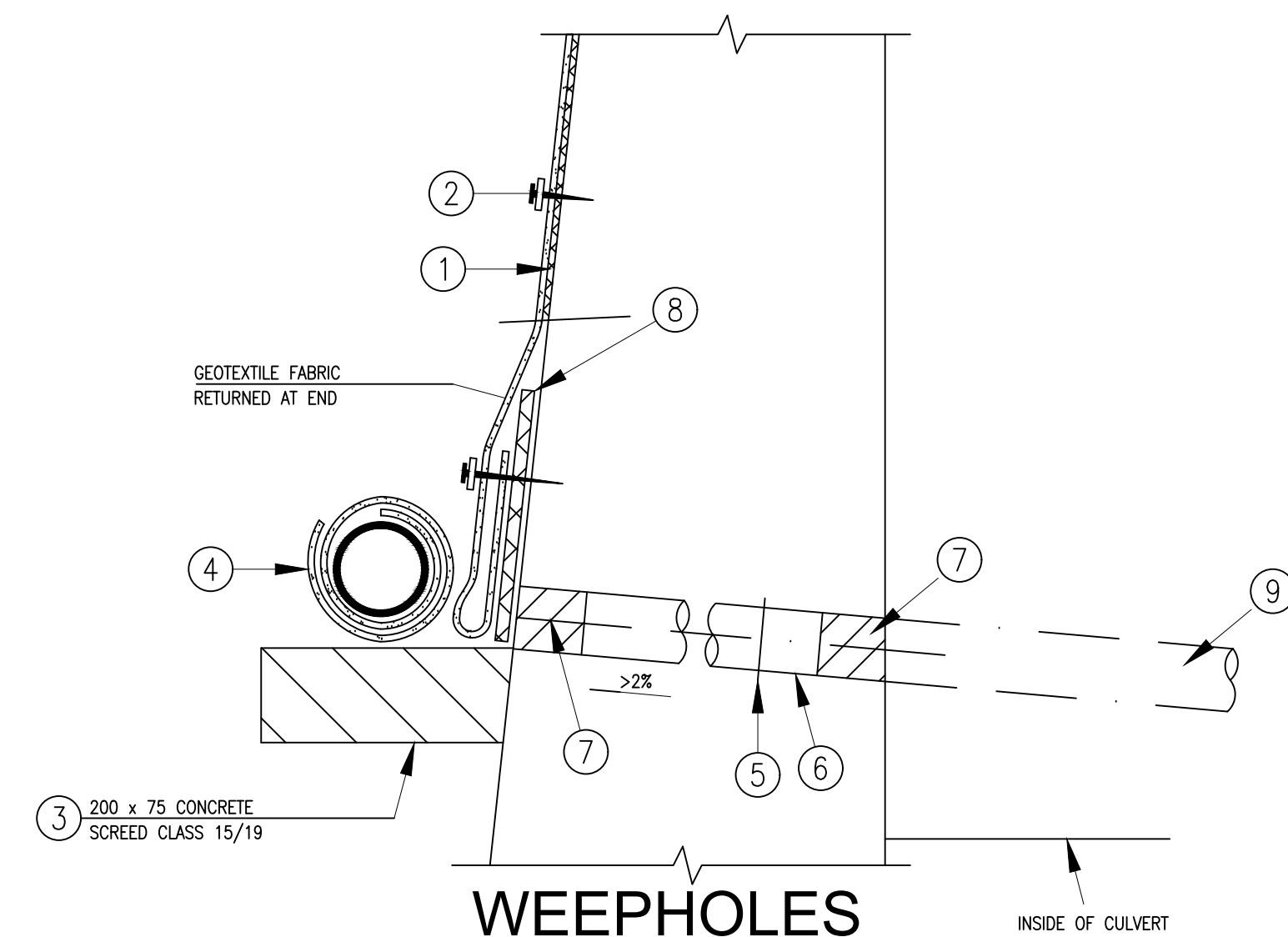
SECTION ELEVATION  
OF WINGWALL COPING DETAIL  
1:10



SECTION ELEVATION  
OF DECK COPING DETAIL  
1:10



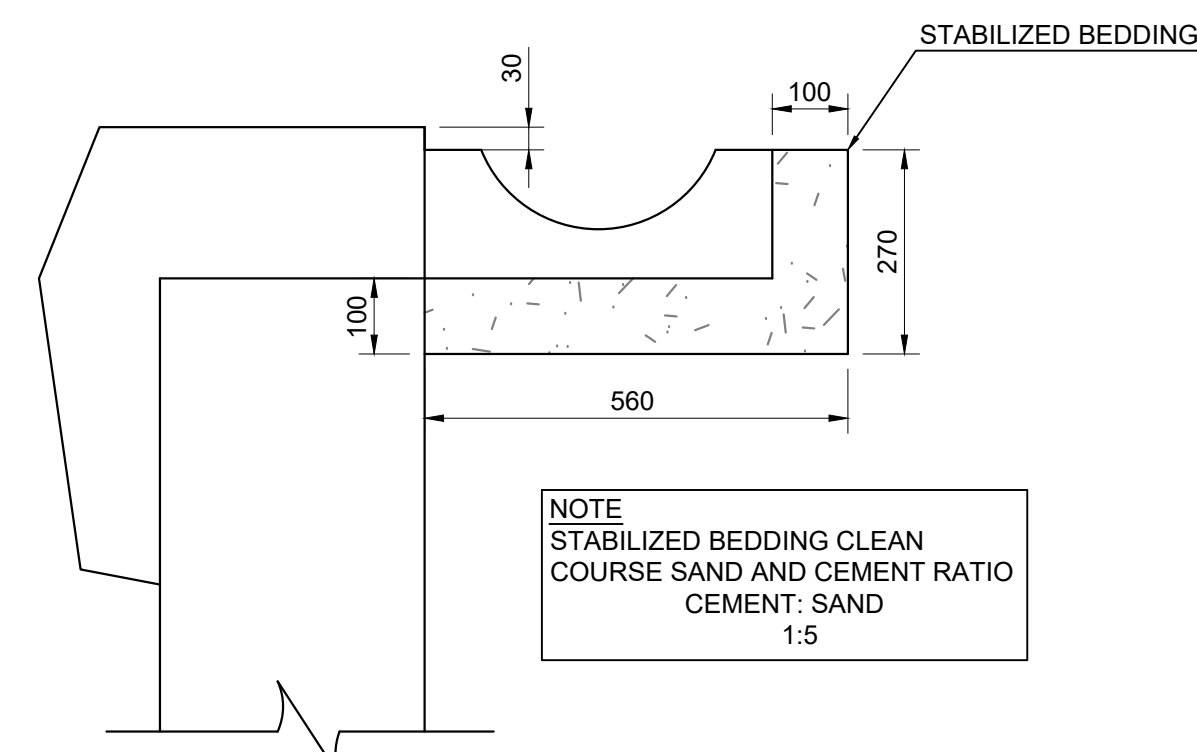
APPROACH SLAB  
1:25



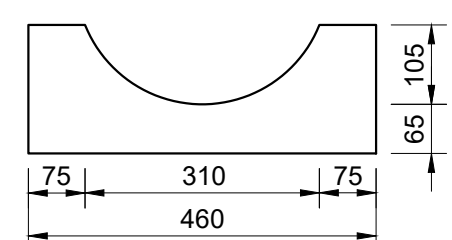
WEEPHOLES  
DETAIL B  
SCALE 1:5

LEGEND

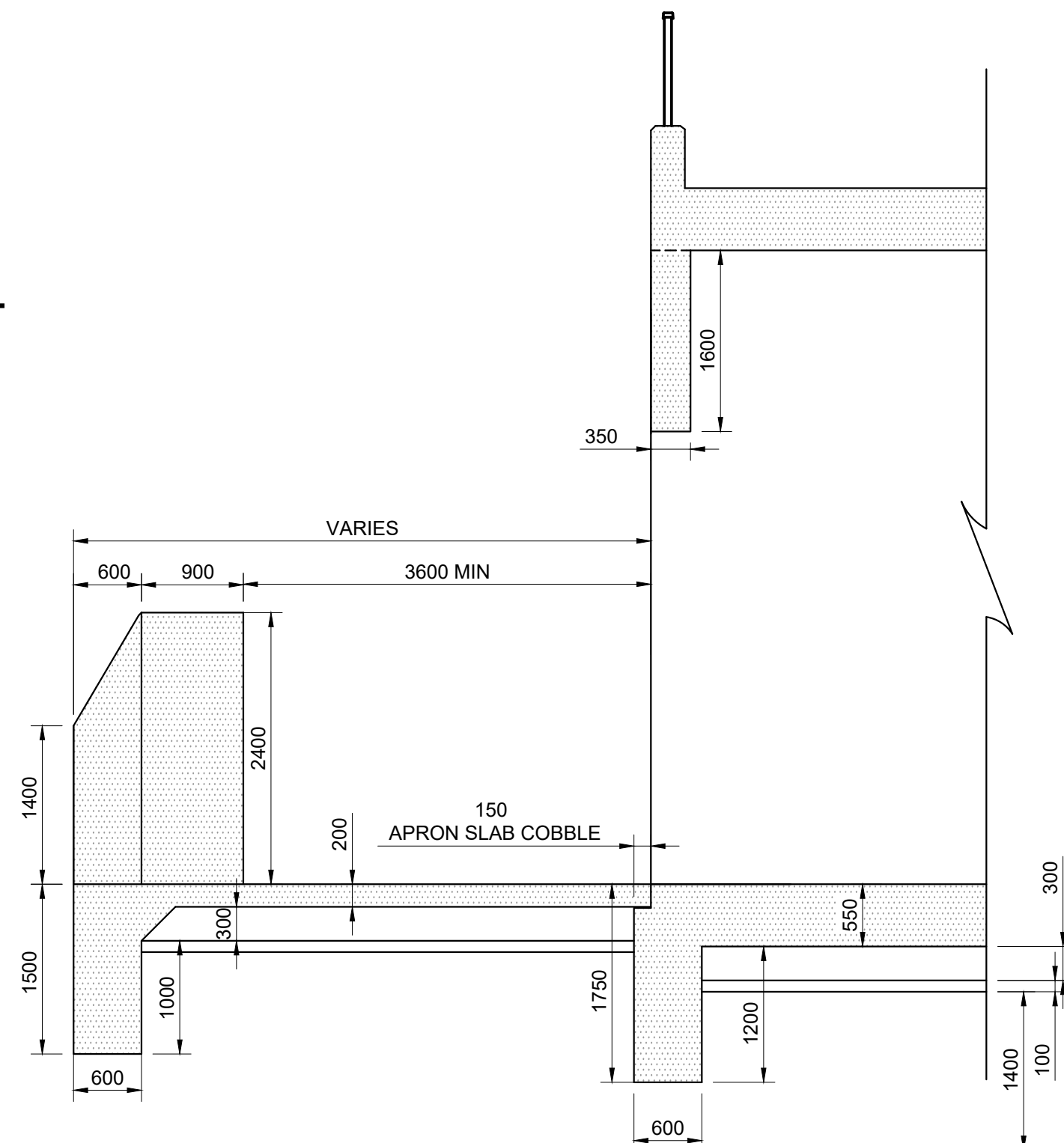
- 200mm/300mm WIDE FILTER ELEMENTS SECURED TO BACK FACE OF STRUCTURE AT 45° SLOPE.
- CONCRETE NAILS WITH 25 x 25mm HOOP IRON WASHERS TO SECURE FILTER ELEMENTS TO STRUCTURE AT ± 1 000mm CENTRES.
- CONCRETE SCREED TO GRADE AND LEVEL OF DRAINAGE PIPES PRIOR TO PLACING OF DRAINAGE PIPES.
- 65mm dia PERFORATED DRAINAGE PIPES WRAPPED IN GEOTEXTILE. THE GEOTEXTILE SHALL HAVE AN OVERLAP OF NOT LESS THAN 150mm AND BE TIED AT CENTRES NOT GREATER THAN 200mm.
- 3.15mm dia STAINLESS STEEL WIRE BARRIER.
- 50mm dia uPVC WEEPHOLES AT CENTRES SHOWN. THE CONTRACTOR SHALL ENSURE THAT THE WEEPHOLES ARE CLEAR AND APPROVED BY THE ENGINEER BEFORE THE FILTER ELEMENTS ARE INSTALLED.
- TEMPORARY POLYSTYRENE PLUG TO PREVENT INGRESS OF GROUT DURING PLACING OF THE CONCRETE.
- 200mm WIDE FILTER ELEMENT SECURED TO BACK FACE OF STRUCTURE AT SAME GRADE AS WEEPHOLES
- EXTENSION OF WEEPHOLES TO EMBANKMENT



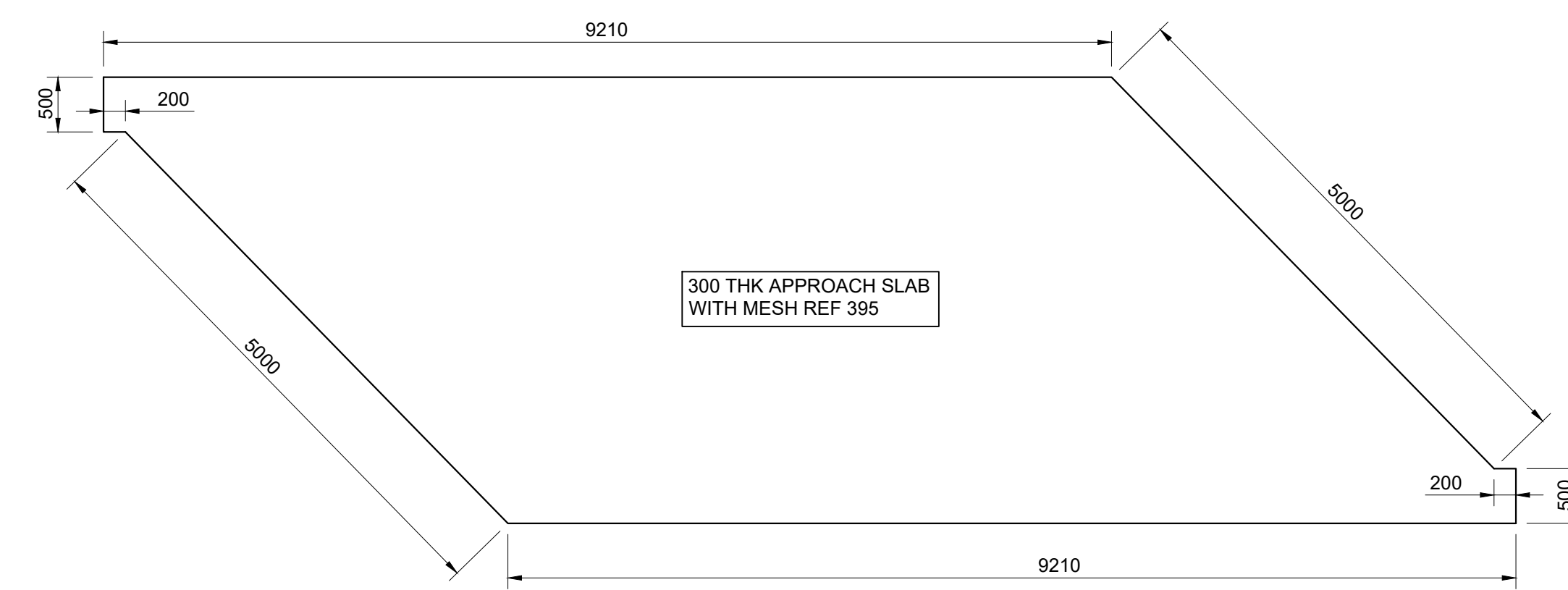
PRECAST WATER CHANNEL  
INSTALLATION DETAIL  
1:10



PRECAST WATER CHANNEL  
1:10



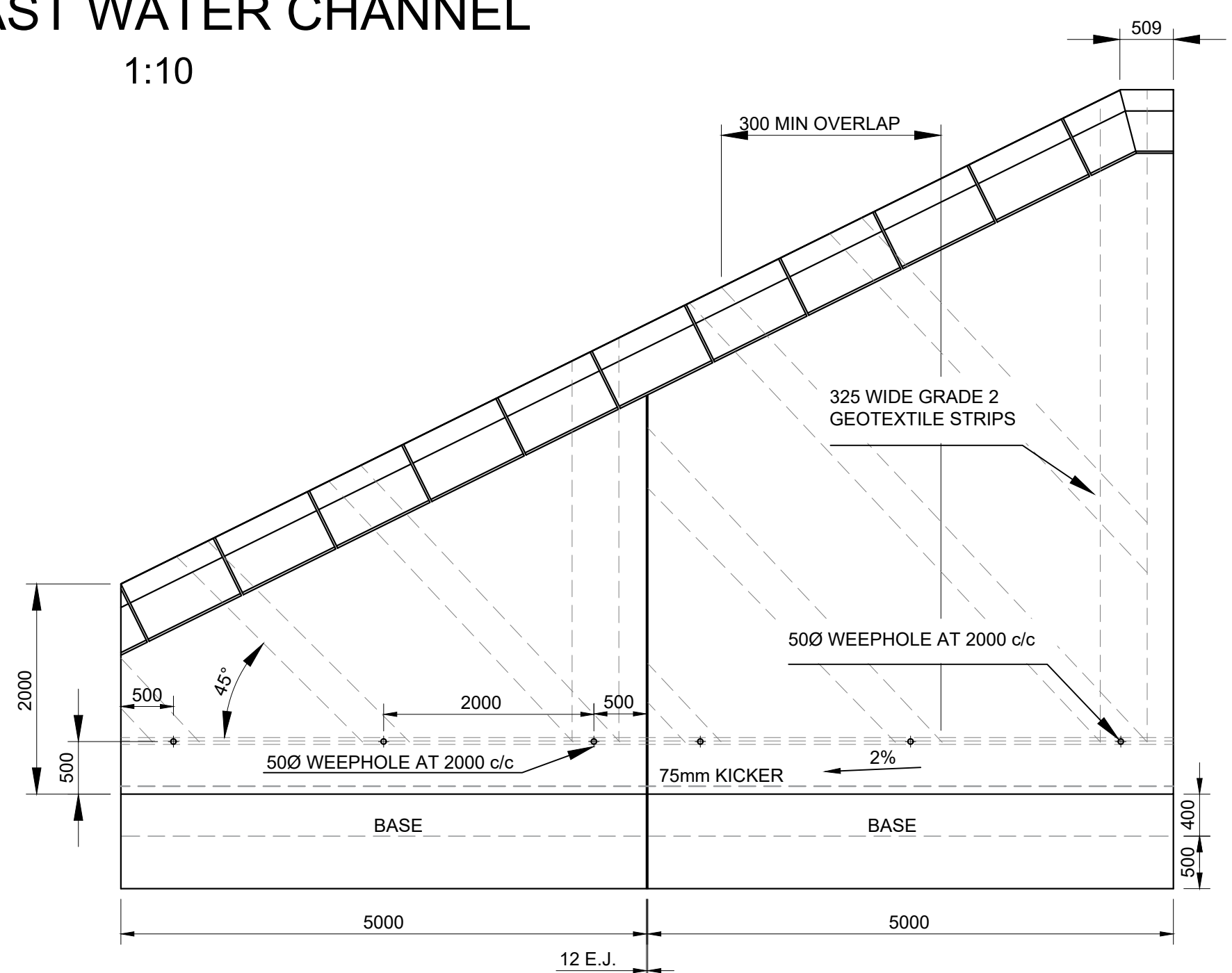
CULVERT APRON  
SLAB DETAIL  
1:50



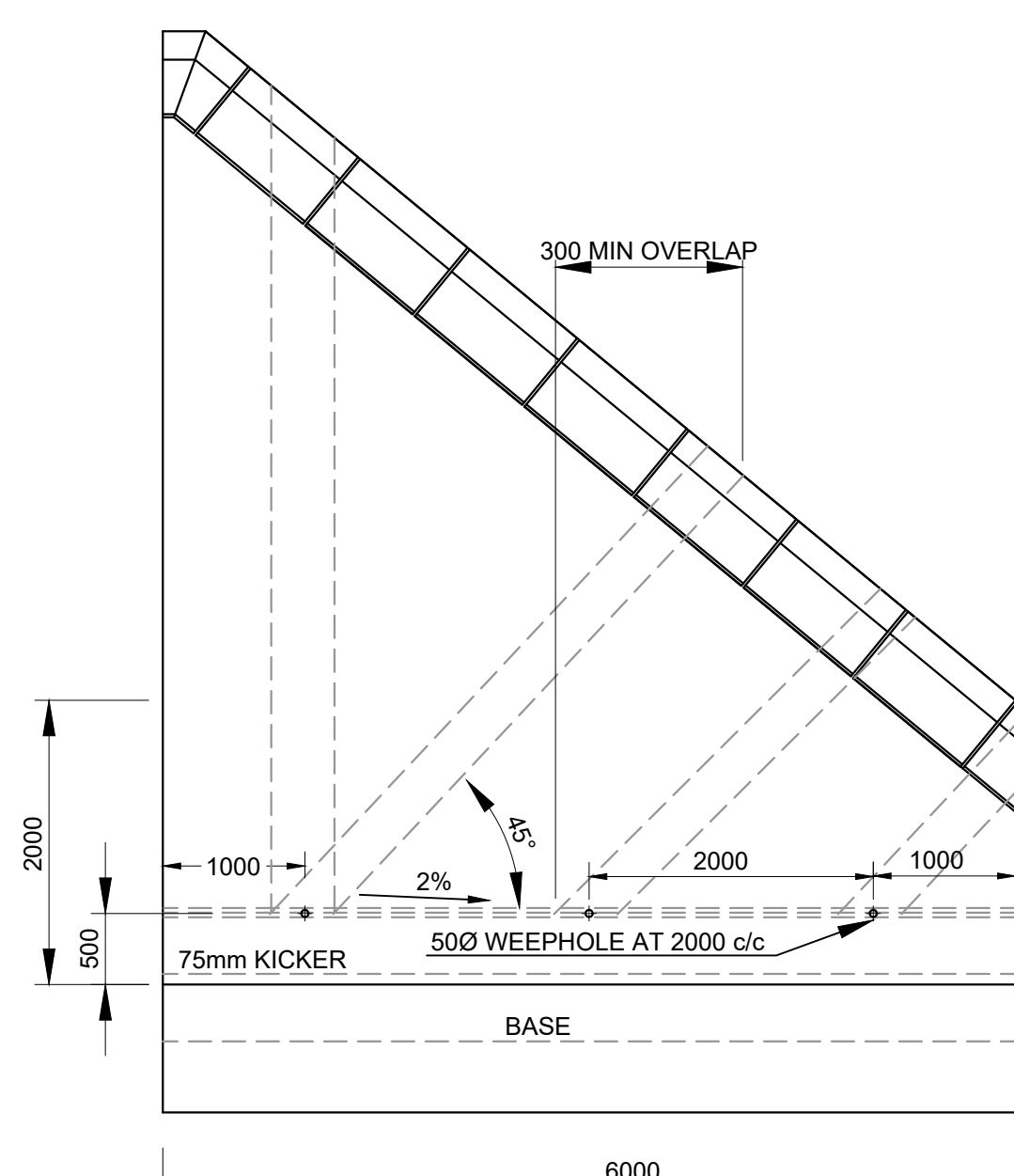
PLAN ON APPROACH SLAB  
1:50

NOTES

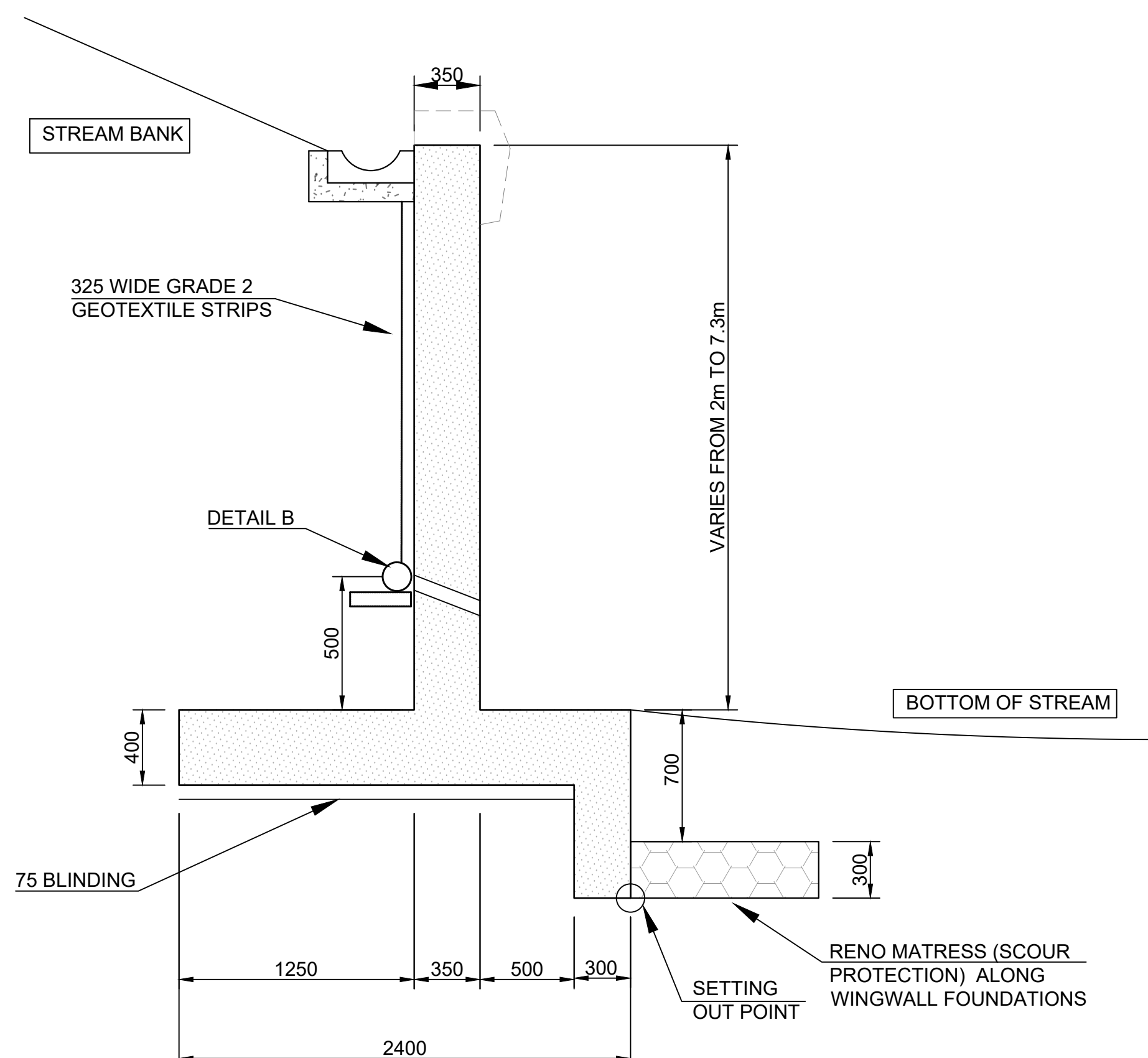
- CONCRETE GRADES  
15/19 : 75mm BLINDING  
30/19 : 300mm BLINDING  
40/19 : ALL INSITU CONCRETE
- CHAMFERS: ALL SHARP EDGES TO BE CHAMFERED 25X25mm
- CONCRETE SURFACE FINISHES  
CLASS 1 : CONCEALED SURFACES  
CLASS 3(a) : ALL VISIBLE SURFACES  
CLASS 4 : TOP OF WALLS
- COVER : 50mm



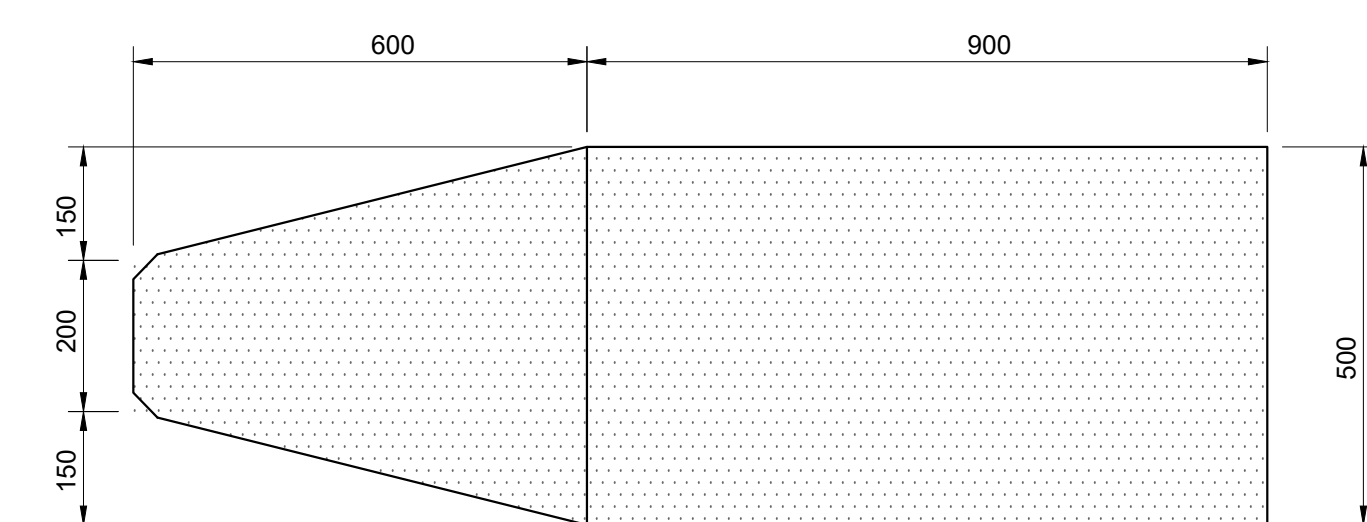
FRONT ELEVATION OF  
NORTH WINGWALL PANELS  
1:50



FRONT ELEVATION OF  
SOUTH WINGWALL PANEL  
1:50

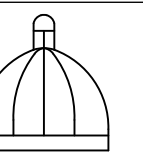


TYPICAL SECTION OF WING WALL  
1:25

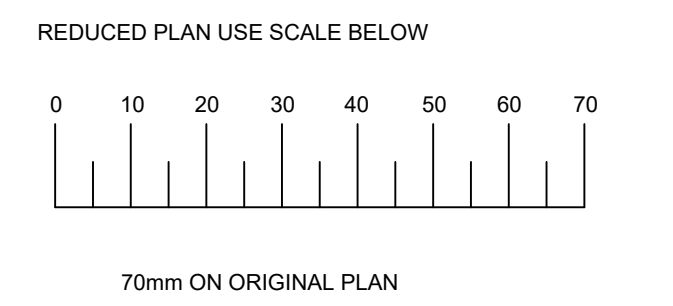


PLAN ON DEBRIS WALL DETAIL  
1:10

FOR TENDER PURPOSES ONLY  
NB: FINISHED CONCRETE LEVELS  
SUBJECT TO CHANGE



eTHEKWINI  
MUNICIPALITY  
PROCUREMENT AND  
INFRASTRUCTURE CLUSTER  
ENGINEERING UNIT  
ROADS PROVISION DEPARTMENT  
STRUCTURES BRANCH



V1	05/09/2021	ISSUED FOR TENDER
Revision	Date	Description
		NOTE: No construction work to commence until land and servitude acquisitions have been completed
		Acquisitions completed:
Date	Engineer	
UNDERGROUND SERVICES CHECKED		
SERVICE	DATE	SIGNATURE
S.W DRAINS		
SEWERS		
WATER MAINS		
G.P.O CABLES		
ELECTRIC CABLES		
S.A.R. CABLES		
E.S.C. CABLES		
OIL PIPE LINE		
NOTE: Only underground services affected by new construction work are shown. Care must be taken during excavations for road foundations, kerbs etc. to avoid damage to underground services such as sewers, drains, cables, water mains and connections. Wherever possible these must be located before work proceeds.		

Contract No.	1T-47319
Project Title	IRPTN - C3 CORRIDOR: CROSSROADS CONSTRUCTION AND CULVERT WIDENING OVER PIESANG RIVER
Drawing Title	M25 CULVERT EXTENSION OVER PIESANG RIVER
CONCRETE DETAILS	
SCALES	AS SHOWN
AS SHOWN	Date: 14/06/2021
Designed: ENGINEER	Checked: P. FENTON
Drawn: DRAFTSPERSON	Surveyed: SURVEY DEPT.
Manager: Structures	
Deputy Head : Roads Provision	
G. EVANS HEAD : ENGINEERING	
Drawing No.	48918
Sheet	03
of	06
Rev.	V1